



July 26 – 27, 2014  
Youngstown Yacht Club  
Youngstown, NY USA

## SAILING INSTRUCTIONS

### **1 RULES**

- 1.1** The Regatta shall be governed by the International Sailing Federation *Racing Rules of Sailing 2013 -2016*, the prescriptions of *US Sailing* and the rules of each Class concerned, except as any of these are modified by the Notice of Race, and by the Sailing Instructions (and any amendments thereto).

### **2 NOTICES TO COMPETITORS**

Notices to competitors will be posted on the official notice board located at the YYC Regatta Office entrance.

### **3 CHANGES TO SAILING INSTRUCTIONS**

Any change to the sailing instructions will be posted before 0830 on the day it will take effect, except that any change to the schedule of races will be posted by 2000 on the day before it will take effect.

### **4 SIGNALS MADE ASHORE**

- 4.1** Signals made ashore will be displayed at the flagpole adjacent to the Youngstown Yacht Club clubhouse

- 4.2** When flag AP is displayed ashore, '1 minute' is replaced with 'not less than 60 minutes' in the race signal AP.

### **5 SCHEDULE OF RACES**

- 5.1** Racing is scheduled on Saturday July 26 and Sunday July 27. It is the intent of the Race Committee to run as many races as practical on each day of racing up to a maximum of eight (8) races for the event.

- 5.3** The warning signal for the first start of the first race each day will be made at 1000 hrs.

5.4 To alert boats that a race or sequence of races will begin soon, the orange starting line flag will be displayed with one sound at least five minutes before a warning signal is made.

5.5 On the last day of the regatta no warning signal will be made after 01430.

## 6 **CLASS FLAGS and COURSE ASSIGNMENTS**

Class flags, course assignments and designated course VHF channels will be posted on the official notice board before 1900 on July 25, 2014.

## 7 **RACING AREAS**

Attachment A shows the location of four race areas and courses:

- Towne BMW Course A
- RBS Alpha Battens Course B
- First Niagara Course C
- RCR Yachts Course D

## 8 **THE COURSES**

8.1 The diagrams in Attachment B show the courses, including the approximate angles between legs, the order in which marks are to be passed, and the side on which each mark is to be left.

8.2 No later than the warning signal, the race committee signal boat will display the course to be sailed, approximate compass bearing of the first leg and the course to be sailed.

8.3 The Offset Mark (offset) used in conjunction with the courses described in this section will be set at approximately a right angle to the windward legs of the course and approximately 50 to 100 yards from mark 1.

8.4 When code flag "G" is flown, the leeward mark will be a gate. On a leeward leg, except for a finish leg, boats shall sail between the gate marks from the direction of the windward mark and round either gate mark.

## 9 **MARKS**

9.1 Inflatable marks will be used for all courses. Details of the marks to be used on each course will be posted on the Official Notice Board prior to 2200 on July 25, 2014.

## 10 **THE START**

10.1 Races will be started by using rule 26 with the warning signal made 5 minutes before the starting signal. The timing of the warning signal for those classes following the first class to start will vary by depending wind conditions, the sailing characteristics of the boats racing and/or the need to adjust the starting line. The race committee will attempt to broadcast its intentions over the designated VHF channel.

10.2 Replace 'class' with numerical start assignment in RRS 26. This modifies rule RRS 26.

10.3 Numerical start assignment flags will be the corresponding international code flags.

10.4 The starting line will be between a staff displaying an orange flag on the starting mark at the starboard end and the course side of the port-end starting mark.

**10.5** Boats whose warning signal has not been made shall avoid the starting area during the starting sequence for other races.

**10.6** A boat starting later than 4 minutes after her starting signal will be scored Did Not Start without a hearing. This changes rule A4.

## **11 CHANGE OF THE NEXT LEG OF THE COURSE**

**11.1** To change the next leg of the course, the race committee will lay a new mark (or move the finishing line) and remove the original mark as soon as practicable. When in a subsequent change a new mark is replaced, it will be replaced by an original mark. If the change is for a leeward leg, the original gate marks will be moved into the new position, unless the change is for the final leg.

## **12 THE FINISH**

**12.1** The finishing line will be between a staff displaying an orange flag on the finishing mark at the starboard end and the course side of the port-end finishing mark

## **13 PENALTY SYSTEM**

**13.1** For all classes, except the 8 Metres, the Two-Turns Penalty (rules 44.1 and 44.2) shall apply. For the 8 Metres, the 20% percentage scoring Penalty (rule 44.3) shall apply. For all classes except 8 Meters, the first two sentences of rule 44.1 are changed to: “A boat may take a One Turn Penalty when it may have broken a rule of Part 2 or rule 31 while racing. However, when she may have broken a rule of Part 2 while in the zone around a mark other than a starting mark, her penalty shall be a Two-Turns Penalty, Rule 44.3 scoring penalty shall not apply.

**13.2** For all classes US Sailing Prescription Appendix T, Section B (Post-Race Penalties) will also apply.

## **14 TIME LIMITS**

**14.1** Time limits are as follows:

The time limit for all classes is 2 hours. If no boat has passed Mark 1 within 40 minutes limit the race will be abandoned. This changes rule 62.1(a).

Boats failing to finish within 45 after the first boat sails the course and finishes will be scored Did Not Finish without a hearing. This changes rules 35, A4 and A5.

## **15 PROTESTS AND REQUESTS FOR REDRESS**

**15.1** Protest forms are available at the Regatta Office. Protests and requests for redress or reopening shall be delivered there within the appropriate time limit.

**15.2** For each class, the completed protest forms shall be submitted to the Jury Secretary within 45 minutes of the docking of the Race Committee finish boat for the class involved (the “protest time limit”).

**15.3** Notices will be posted no later than 30 minutes after the protest time limit to inform competitors of hearings in which they are parties or named as witnesses. Notice will contain protest room and time of hearing.

- 15.4** Notices of protests by the race committee or protest committee will be posted to inform boats under rule 61.1(b).
- 15.6** Breaches of instructions 10.5, 18.1, 19, 20, 21 and 22 will not be grounds for a protest by a boat. This changes rule 60.1(a). Penalties for these breaches may be less than disqualification if the protest committee so decides.
- 15.7** On the last scheduled day of racing a request for reopening a hearing shall be delivered no later than 30 minutes after the requesting party was informed of the decision on that day. This changes rule 66.
- 15.8** On the last scheduled day of racing a request for redress based on a protest committee decision shall be delivered no later than 30 minutes after the decision was posted. This changes rule 62.2.

**16 ARBITRATION**

- 16.1** US Sailing Prescription Appendix T, Section D (Arbitration) will apply. Forms to accept a post-race penalty are available from, and completed forms may be submitted to, the Jury Secretary located at the Regatta Office.

**17 SCORING**

- 17.1** The low-point scoring system, rule A4 shall apply, and is modified so that each boat's series score will be the total of her race scores with no scores discarded.
- 17.2** Pursuit class(es) will have separate scoring each day.
- 17.2** One race is required to be completed to constitute a series.

**18 SAFETY REGULATIONS**

- 18.1** A boat that retires from a race shall notify the race committee as soon as possible.

**19 TRASH DISPOSAL**

Trash may be placed aboard support or official boats.

**20 HAUL-OUT RESTRICTIONS**

There are no restrictions on hauling boats in the J70 and Melges 20 classes during the regatta. Hoist and trailer accommodations on Saturday July 26th are limited and haulouts will be first come, first served. In all other classes boats may be hauled during the regatta only with written permission of the Race Committee.

**21 DIVING EQUIPMENT AND PLASTIC POOLS**

Underwater breathing apparatus and plastic pools or their equivalent shall not be used around keelboats between the preparatory signal of the first race and the end of the regatta.

**22 RADIO COMMUNICATION**

Except in an emergency, a boat shall neither make radio transmissions while racing nor receive radio communications not available to all boats. This restriction also applies to mobile telephones.

**23**

**PRIZES**

Prizes will be awarded to the boats placing first, second and third overall in each class for the Regatta in classes with 8 or more competitors. In all other classes prizes will be awarded to the boats placing first, second. An overall perpetual prize will be awarded to the winning country, Canada or USA, will be based on the overall score using the high point system for the top American and Canadian finisher in each class.

**24**

**DISCLAIMER OF LIABILITY**

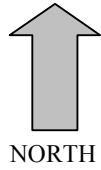
Competitors participate in the regatta entirely at their own risk. See rule 4, Decision to Race. The organizing authority will not accept any liability for material damage or personal injury or death sustained in conjunction with or prior to, during, or after the regatta.

**25**

**INSURANCE**

Each participating boat shall be insured with valid third-party liability insurance.

ATTACHMENT A  
RACE AREAS



LAKE  
ONTARIO


R 2 

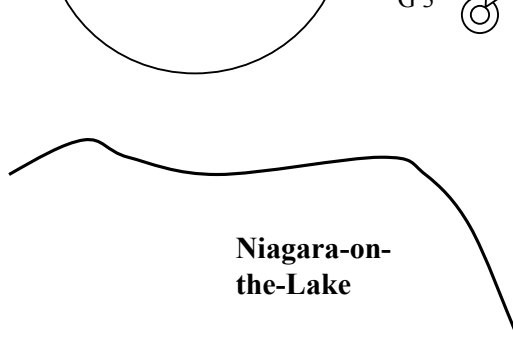
RBS Alpha  
Battens  
Course B

Towne BMW  
Course A

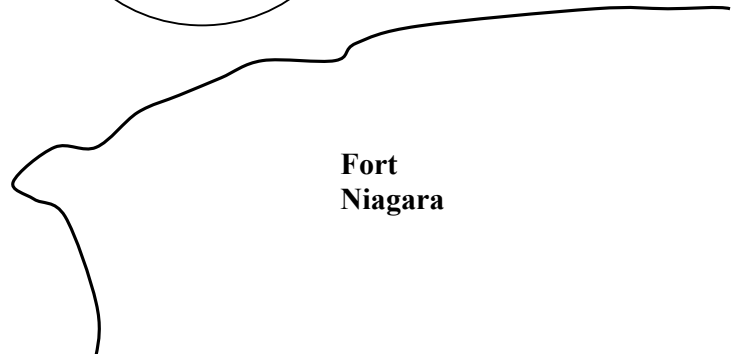
RBS Alpha  
Battens Course  
C

RCR Yachts  
Course D

G 3 



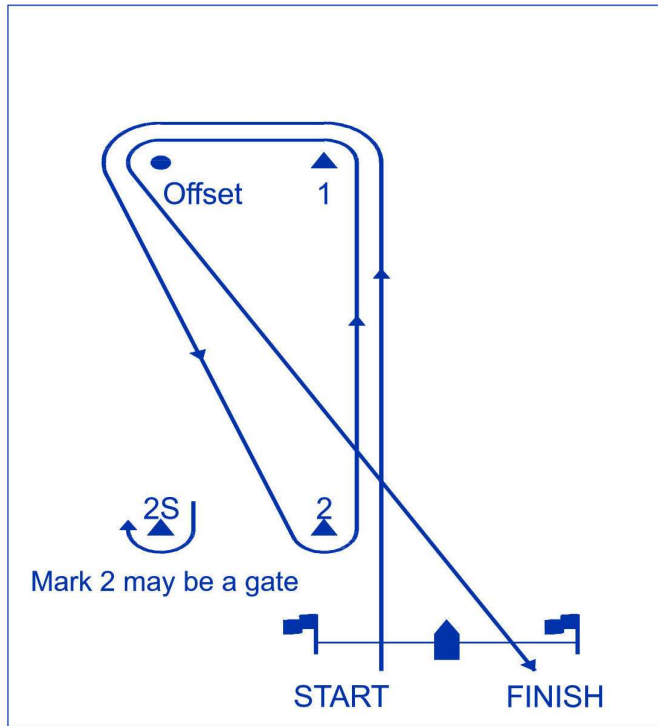
Niagara-on-  
the-Lake



Fort  
Niagara

**ATTACHMENT B  
COURSE DIAGRAMS**

**Course #4: Four Legs - Downwind Finish**



**Course #5: Five Legs - Upwind Finish**

