



# Sailing Instructions

## 2013 American Yacht Club Fall Regatta

September 28, 29 and October 5, 6, 2013

Organizing Authority  
American Yacht Club

### 1.0 RULES

- 1.1. The regatta will be governed by;
  - The rules as defined in The Racing Rules of Sailing (RRS),
  - The IRC rules, Parts A, B, and C for the IRC Division,
  - The current PHRF Regulations as administered by the YRA of Long Island Sound (YRALIS) for the PHRF Division,
  - For one-design classes, applicable class association rules,
  - For Vintage and Classic Yachts, applicable Classic rules,
  - ISAF Regulation 22 as it applies to class rules,
  - For all classes except Etchells, the Minimum Equipment Recommendations of the YRALIS (Category C) for all classes, except as any of these are changed by the Notice of Race or by these Sailing Instructions.
- 1.2. The crew number or crew weight limitation specified in a boat's IRC, PHRF or One Design certificate or applicable class rule shall not be exceeded. Except for the Etchells Class, one additional crew member less than age 14 shall not be counted against the crew number or weight limitation. Entrants who intend to carry an additional crew member less than age 14 shall so indicate by email to [aycrc@americanyc.org](mailto:aycrc@americanyc.org) before 1800 on September 25, 2013.
- 1.3. Paragraph 21.1.5 (d) of the IRC Rule is amended to allow a boat to carry additional sails (including one extra spinnaker) in the event that the race committee announces its intention to post a distance race, as per SI 8.9. If the distance race is not sailed as anticipated, none of additional sails may be used. After the distance race is sailed, the additional sails and spinnaker shall be removed for the remainder of the series. If a distance race is posted the Swan 42 Class will use its in-shore sails.
- 1.4. If a one design class rule has modified Rule 44.1 (a) to allow a boat to take a One Turn Penalty when she has broken a rule of Part 2 with a boat in her class while racing, she must abide by Rule 44.1 (a) and take a Two Turn Penalty if she may have broken a rule of Part 2 with a boat from another class while both are racing.

### 2.0 NOTICES TO COMPETITORS

- 2.1. Notices, including notices that may amend the Notice of Regatta or the Sailing Instructions, will be posted on <http://www.yachtscoring.com/emenu.cfm?eID=780> and on the official race committee notice board located on the American Yacht Club front patio no later than 2000 hours on the day before it will take effect. Notices will also be broadcast on the Course VHF channel at 0930 on each race day.

### **3.0 SIGNALS MADE ASHORE**

- 3.1. Signals made ashore will be displayed on the American Yacht Club main flagpole and announced on VHF channels 69 and 71.
- 3.2. If races are postponed from ashore, the first warning signal will be made not less than 90 minutes after the AP is lowered. Races will not be postponed ashore later than 1130.
- 3.3. If racing for the day is abandoned from ashore, signal flags N over A will be displayed with three sound signals and announced on VHF channels 69 and 71.

### **4.0 SCHEDULE OF RACES**

- 4.1. Races for all IRC, PHRF, and one design classes are scheduled for September 28, 29 and October 5, 6. Races for Etchells Class are scheduled for October 5, 6 only. Races for Vintage and Classic Yachts are scheduled for October 6 only.
- 4.2. More than one race may be held on any day at the sole discretion of the race committee.
  - 4.2.1. If the race committee intends to start another race on the same day, it will display the second substitute (with no sound) while boats are finishing.
  - 4.2.2. When numeral pennants are displayed below the second substitute, the additional race will be held for those classes only. Classes so signaled should assemble in the vicinity of the downwind end of the course and stay clear of boats that are still racing.
  - 4.2.3. The next race for each class will begin as soon as practicable after the previous race, even though other classes may still be racing.
- 4.3. The first warning signal on each Course is scheduled to be made at 1055 each day.

### **5.0 RACING AREAS AND VHF CHANNELS USED**

- 5.1. There will be two separate race areas to which classes will be assigned, the East Course and the South Course.
- 5.2. The East Course is located approximately mid-Sound, east of Milton Point. Communications for classes racing on the East Course will be on VHF channel 71.
- 5.3. The South Course is located approximately mid-Sound South of Milton Point. Communications for classes racing on the South Course will be on VHF channel 69.
- 5.4. The approximate position of the starting areas will be announced at approximately 1015 each day for all classes on their respective VHF channels.

### **6.0 CLASSES AND CLASS FLAGS**

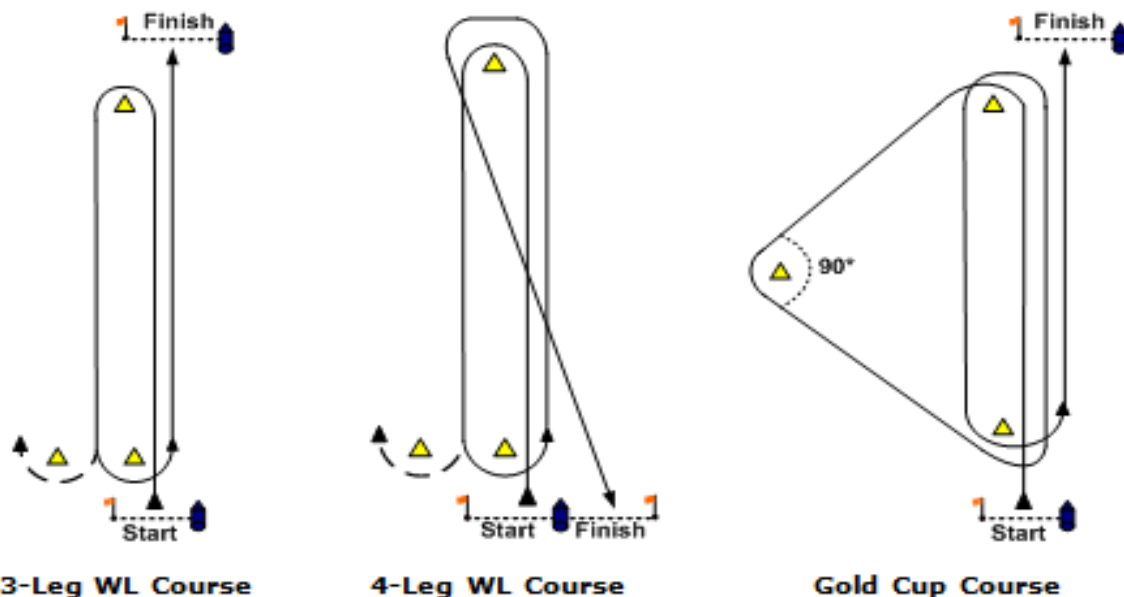
- 6.1. Boats will be placed in classes at the discretion of the race committee, designated by numerals (1, 2, 3 etc.).
- 6.2. Separate Level and One Design classes may be established at the discretion of the race committee.
- 6.3. Class flags will be numeral pennants. Each boat shall display the numeral pennant for its class on its backstay or, in the absence of a backstay, from its stern rail.
- 6.4. A listing of entrants by class and course assignment (East or South) will be available at the Club front desk and the regatta web site, [www.AmericanYC.org](http://www.AmericanYC.org) and [www.yachtscoring.com](http://www.yachtscoring.com), at noon on the day before the first race, and from race committee support boats in the starting areas.

### **7.0 THE COURSES**

- 7.1. Except as provided in Sailing Instruction 8.5, the course for each race will be Windward-Leeward (WL) for a specified number of legs, or Gold Cup (G).

- 7.2. For WL or G courses the race committee signal boat will display the magnetic bearing and range, in nautical miles and tenths of a mile, from the signal boat to the windward mark. The signal boat will also display the number of legs (for WL only) for each class or numeral 9 for Gold Cup. For races around government marks the letters will be displayed on a white board. This information will also be announced on the race area VHF channel.
- 7.3. Sample course board and configurations for WL or G courses (labels may not be displayed):

Bearing	Range	Class	Legs
2	1	1	9
3	5	2	4
0		3	4
		4	2



- 7.4. The race committee, at its discretion, may set a gate as the leeward mark. If the leeward mark is a gate, boats shall pass through the gate from the direction of the previous mark before proceeding onto the next leg of the course. The leeward mark or gate is not a mark of the course for a final downwind leg.
- 7.5. At the discretion of the race committee on each Course, one or more races in the series may be sailed around government marks. If signaled, the course will be from the start, around specified government marks and then to the finish.
- 7.6. If government marks are to be used, the race committee signal boat will signal the course by letters according to Sailing Instruction 10.1. Marks shall be rounded in the order signaled (reading the course board column by column, top-down) and passed on the hand so that the rhumb line to the next mark will not cross the rhumb line from the previous mark. If the next mark is reciprocal, the mark shall be left to port when rounding.
- 7.7. If X is signaled as a mark of the course, the course board will display the magnetic bearing and range in nautical miles and tenths of a mile from the race committee signal boat to mark X. Bearing and range will only be signaled if mark X is a mark of the course.

- 7.8. A sample course board using government marks is shown below (labels may not be displayed). In this example the sequence of marks for all classes would be: Start, F, X, A, G, A, Finish. Since the leg from G to A is reciprocal of the previous leg, G would be left on the port hand. A different course board may be used to display the course letters only.

Mark	Mark	Bearing	Range
F	A	1	2
X		2	0
A		0	
G			

- 7.9. The race committee may announce its intention to run a distance race by posting a notice on the official notice board (see 2.1), and at <http://www.yachtscoring.com/emenu.cfm?eID=780> no later than 2000 of the day before the intended distance race. Regardless if the race committee has given notice of intention, the race committee is not bound to run a distance race that day or any other day. Failure to post a notice or competitor failure to see the notice will not be grounds for redress.

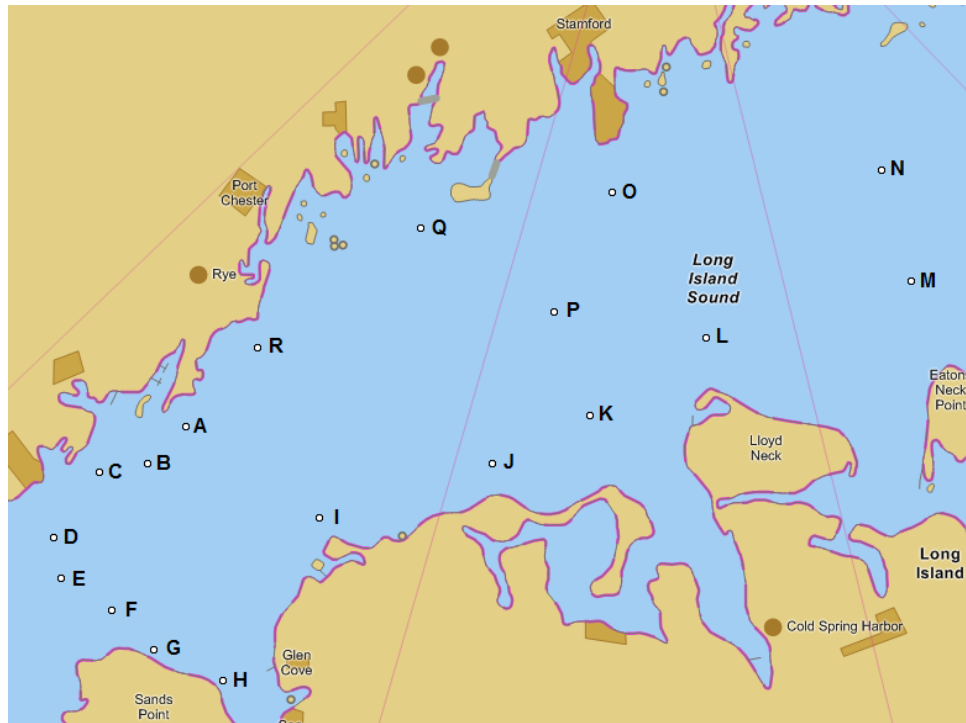
## 8.0 MARKS FOR WL AND G COURSES

- 8.1. East Course marks will be large yellow inflatables. South Course marks will be large orange inflatables.
- 8.2. A new mark replacing an original mark will be a different color (orange on the East Course, yellow on the South Course). In a subsequent change of course, the new mark will be replaced with an original color mark. Further course changes will follow this pattern.

## 9.0 MARKS FOR DISTANCE RACE

- 9.1. Mark X, if signaled, will be an inflatable mark located at a bearing and range from the race committee signal boat as displayed on the course board. Note that Mark X may be used anywhere in the sequence of marks.
- 9.2. Marks for the distance race will be designated as follows:

<b>A</b> N "40A" Sctch Caps	<b>F</b> G"23" Sands Point	<b>K</b> G"17" Oyster Bay	<b>P</b> R"32A" Mid-sound
<b>B</b> R"42" Mamaroneck	<b>G</b> R"4" Prospect Pt	<b>L</b> G"15" Lloyd Point	<b>Q</b> G"1" Greenwich
<b>C</b> C"1" Delancey Pt	<b>H</b> R"6" Mott Point	<b>M</b> GR "E" Eatons Neck	<b>R</b> R"38" Playland
<b>D</b> R"2" Larchmont	<b>I</b> G"21" Matinecock	<b>N</b> R"28C" Norwalk	
<b>E</b> C"1" Execution Rock	<b>J</b> G"19" Oak Neck Pt	<b>O</b> R"32" Stamford	



## 10.0 THE START

- 10.1. Races will be started as follows. Five minutes before the daily first warning of the first class only, flag F will be displayed with 1 sound. 1 minute before the first class's initial warning, flag F will be removed with 1 sound. This changes Rule 26.
- 10.2. At the discretion of the race committee, class starts may be combined. The race committee will signal this type of start by displaying the numeral pennants of all classes sharing the start as the warning signal.
- 10.3. The starting line for all classes will be between a staff displaying an orange flag on the race committee signal boat at the starboard end and the port-end starting mark. Starting marks will be orange on the East Course and yellow on the South Course.
- 10.4. The race committee signal boat may have one or more large inflatable buoys secured to it which shall be considered to be part of the committee boat for the purpose of rule 31.
- 10.5. Boats whose warning signal has not been made shall keep clear of the starting area.
- 10.6. A boat that starts later than 10 minutes after her starting signal will be scored DNS.

## 11.0 RECALLS

- 11.1. The race committee will attempt to identify recalled boats and to broadcast their sail numbers on the race course VHF channel. Failure of a boat to see or hear her recall notification, and the timing and order of such hail, shall not be cause for redress.

## 12.0 CHANGE OF COURSE BETWEEN STARTS

- 12.1. If the race committee changes the first mark following a postponement during a starting sequence, flag C will be displayed with short repeated sounds prior to the warning signal and the windward mark for all classes not yet started will be a course change mark in accordance with Sailing Instruction 9.2.

### **13.0 THE FINISH**

- 13.1. The finishing line for all courses will be between a staff displaying an orange flag on an official boat and the finish mark. Finishing marks that are not a mark of the course will be orange on the East Course and yellow on the South Course.
- 13.2. If a course is shortened, the finish line will be between a staff displaying flag S on an official boat and a rounding mark or between the gate marks if shortened at a gate.
- 13.3. For WL Courses with an odd number of legs and Course G, the finishing line will be located approximately 200 yards to windward of the windward mark on the same bearing as the last leg.
- 13.4. For WL Courses with an even number of legs, the finishing line will be located approximately 200 yards to leeward of the leeward mark or gate on the same bearing as the last leg and the finishing mark will be on the opposite side of the race committee signal boat from the starting mark.
- 13.5. For WL or G courses, boats approaching a windward finishing line to finish may ignore the windward mark. Boats approaching a downwind finishing line to finish may ignore the leeward mark or gate.

### **14.0 TIME LIMIT**

- 14.1. If no boat in a class has finished within the time limit the race for that class will be abandoned.
- 14.2. For courses WL and G the time limit for the first boat to sail the course and finish in each class will be 2-1/2 hours from the starting time of that class. Boats failing to finish within 30 minutes after the first boat will be scored "Time Limit Expired" (TLE) without a hearing. This changes RRS 35.
- 14.3. For courses using government marks, the time limit for the first boat to sail the course and finish in each class will be 3-1/2 hours from the starting time of that class. Boats failing to finish within 60 minutes after the first boat in the class will be scored TLE without a hearing. This changes RRS 35.

### **15.0 WITHDRAWAL**

- 15.1. Any boat withdrawing before the start or retiring from a race for any reason shall notify the race committee at the earliest possible opportunity on the race course VHF channel or by telephone to American Yacht Club (914-967-4800).

### **16.0 PROTESTS AND REQUESTS FOR REDRESS**

- 16.1. Rule 61.1(a) is changed to require that the red flag must be flown from the backstay, or, in the absence of a backstay, on the stern rail.
- 16.2. Rule 61.1(a) is changed to include the following notice and procedures: At any time after the incident, up to and including immediately after finishing, a protesting boat shall notify the race committee over the race course VHF channel of its intent to lodge a protest. The race committee will identify all protests for that race received by the Committee by broadcast over the race course VHF channel. Broadcasts will commence approximately 5 minutes after the first boat has finished and will be repeated at approximate 15-minute intervals until the last boat has finished. These broadcasts constitute the notification of hearing to a protested boat required by rule 61.1.
- 16.3. At the first reasonable opportunity during, or immediately after, the race, a boat that accepted a Two-Turns Penalty shall report that fact to the race committee on the race course VHF channel and identify the other boat(s) involved in the incident. This changes Rule 44.2.

- 16.4. Protests and Requests for Redress shall be filed on standard US SAILING protest forms. Protest forms will be available at the Jury Desk in the Club front lobby.
- 16.5. Written protests shall be delivered to the Jury Desk within one hour of the time that the race committee signal boat for that Course docks. This time limit will be posted on the official race committee notice board. A list of protests, and the order in which they will be heard, will be posted on the official race committee notice board no later than 30 minutes after the protest time limit expires.
- 16.6. Protest hearings will be held at American Yacht Club as soon as possible after each day of racing. A protest against a boat whose representative is not present in the vicinity of the Jury Desk may be heard without representation from the protested boat as provided in rule 63.3(b).
- 16.7. It is the responsibility of the parties to ensure that their witnesses are available when called to testify. If witnesses are not in the vicinity of the Jury Desk when called, they may not be heard.

## **17.0 ARBITRATION**

- 18.1 For protests involving an alleged breach of the rules of Part 2 of the RRS, a short arbitration hearing will be held prior to the protest hearing. This changes Part 5, Section B of the RRS.
- 18.2 After a written protest form is filed, one representative from each boat will meet with the arbitrator. No witnesses will be allowed. Unresolved arbitration will be referred to the Protest Committee.
- 18.3 A boat that accepts fault at the arbitration hearing shall receive a penalty score equal to her finish position plus 40% of the number of boats entered (rounding 0.5 upward), except that she shall not be scored worse than DNF.
- 18.4 Decisions made during arbitration cannot be grounds for redress and cannot be appealed.
- 18.5 The arbitrator will not be a member of the Jury that hears the protest, but may be permitted to observe the testimony given to the Jury and offer testimony. This changes rule 63.3(a).

## **18.0 SCORING**

- 18.1. The Low Point Scoring System of RRS Appendix A will apply, except that if fewer than five races are completed each boat's total score will be the sum of her scores for all races. If five or more races are completed, each boat's worst race will be discarded subject to rule 90.3 (b).
- 18.2. Multiple races are scheduled, of which one shall be completed to constitute a series.
- 18.3. IRC classes will be scored using Time on Time.
- 18.4. PHRF classes will be scored using the handicaps provided by the YRALIS and the course distance. Course distances as determined by the race committee will not be grounds for redress.
- 18.5. Classic Yachts will be scored according to the CRF table. Course distances as determined by the race committee will not be grounds for redress.
- 18.6. A boat that fails to finish within the time limit following the finish of a boat in her class shall, without a hearing, be scored by the race committee with points equal to the number of boats in her class that have sailed the course and finished within the time limit plus two points. This changes rules A4.1, A4.2 and A5.

## **19.0 ELECTRONIC COMMUNICATION**

- 19.1. Each boat shall carry a radio capable of transmitting and receiving VHF channel 16, 69 and 71.
- 19.2. Except in an emergency or to report a protest or withdrawal, or as otherwise provided herein, a boat shall neither make radio transmissions while racing nor receive radio communications not

available to all boats. This restriction also applies to mobile telephones and other electronic communication.

- 19.3. The race committee may announce changes to the starting line or the course on the Course VHF channel. Failure to hear such broadcasts shall not be grounds for redress.
- 19.4. Competing boats shall not communicate by radio with commercial craft, except in an emergency. Failure to comply with this instruction may result in a Rule 2 hearing against the offending boat.

## **20.0 PRIZES**

- 20.1. Prizes will be awarded to the boats with the best total scores in each class.
- 20.2. The JOYETTE, ZILPH and CYNOSURE trophies will be awarded to the boats which, in the judgment of the Race Committee, have the best performance in the PHRF, Level, and IRC divisions respectively. The ROGER SHERMAN MEMORIAL trophy will be awarded to the boat which, in the judgment of the Race Committee, has the best combined performance in the Spring Series and Fall Regatta.
- 20.3. The GERARD T. HANNON MEMORIAL TROPHY may be awarded in the discretion of the race committee to a boat or person demonstrating exceptional sportsmanship or fair play.
- 20.4. Prizes will be awarded at American Yacht Club as soon as possible after the final race and protest hearings.

## **21.0 NAVIGATION RULES**

- 21.1. All boats are cautioned to observe the Navigation Rules of the Road and to yield right of way to vessels restricted in their ability to maneuver, especially to tugs and barges. Any boat observed to impede such traffic may be protested by the race committee.

## **22.0 DISCLAIMER OF LIABILITY**

- 22.1. As a condition of the participation of any boat in any race or related activity sponsored or undertaken by American Yacht Club, the owner and each crew member agree that the safety of the boat and her crew and the decision whether or not to start or continue to race is solely their responsibility. See Rule 4, Decision to Race. All competitors waive all claims which he or she, or any heir, representative, successor or assignee, may have against American Yacht Club and its officers, trustees, members, committees, employees or agents, arising out of or in any way connected with participation in such race or activity.

## **23.0 OTHER DOCUMENTS**

- 23.1. Forms, documents, scratch sheet and results related to this event are located on <http://www.yachtscoring.com/emenu.cfm?eID=780>. Competitors should consult the official race committee Notice Board for final information.

## **24.0 CONTACT INFORMATION**

American Yacht Club, 499 Stuyvesant Ave., Rye NY 10580 T(914) 967-9418, F(914) 967-5340

Email: [aycrc@americanyc.org](mailto:aycrc@americanyc.org) Website: [www.americanyc.org](http://www.americanyc.org)

John L. Myles Jr., Principal Race Officer (East Course)

David Barton and George Petrides Principal Race Officers (South Course)

Sandison E. Weil, Protest Committee Chairman

Nicholas S. Everett, Race Committee Chairman