



114th Larchmont Race Week
Larchmont Yacht Club
July 14-15 & July 21-22, 2012

2012 Larchmont Race Week

Sailing Instructions – Index

SI for Cruising & Classic Boats – Page 2

SI for One Design Classes – Page 8

One Design – SI Amendment 1 – Page 12

SI for Vanguard 15 Class – Page 14

SI for Ideal 18 Class – Page 17



Larchmont Yacht Club

ONE HUNDRED FOURTEENTH RACE WEEK DAY RACE SERIES FOR CRUISING BOATS INCLUDING CLASSIC BOATS IN THE WOODEN BOAT REGATTA SERIES Saturday, July 14, Sunday, July 15, Saturday, July 21, Sunday, July 22, 2012

SAILING INSTRUCTIONS

1 RULES

- 1.1 This regatta will be governed by the *rules* as defined in *The Racing Rules of Sailing 2009-2012*.
- 1.2 Boats shall observe the Minimum Equipment Recommendations of YRA of LIS, Race Category C. Paragraphs 2.3, 2.4, 2.5, 2.6, 2.7 & 2.8 do not apply to boats not designed and equipped with pulpits, stanchions, lifelines and self-bailing cockpits.
- 1.3 Each boat shall carry a VHF radio capable of sending and receiving VHF channel 73.
- 1.4 Part 5 Section B is changed to provide for arbitration of protests of Part 2 rules.

2 NOTICES TO COMPETITORS AND RADIO COMMUNICATION

- 2.1 Notices to competitors will be posted on the official notice board located on the front porch of the main clubhouse.
- 2.2 VHF Channel 73 will be used for communication.

3 CHANGES TO THE SAILING INSTRUCTIONS

Any changes to the Sailing Instructions will be posted no later than 0830 on the day they take effect except that any changes to the racing schedule will be posted by 2000 on the day before they take effect. Copies will be posted on the official notice board and available at the front desk of the Larchmont Yacht Club.

4 SIGNALS MADE ASHORE

- 4.1 Signals made ashore will be displayed from the main flagpole of the Larchmont Yacht Club
- 4.2 Flag AP over Flag E with 2 sound signals (1 when lowered) means "The race is postponed for the Cruising Boats. The first warning signal will be made not less than 60 minutes after the flag AP over E are lowered. This changes race signal flag AP.

5 SCHEDULE OF EVENTS

- 5.1 With the exception of the Classic Boat division, racing for Cruising Boats is scheduled for Sat. July 14, Sun. July 15, Sat. July 21 and Sun. July 22. Classic Boats will race on July 21 and 22 only.
- 5.2 The first warning for Cruising & Classic Boats is scheduled for 1055 on all days.
- 5.3 The regatta committee intends to run multiple races. The number of races conducted is at the sole discretion of the regatta committee. If a subsequent race will be run, the race committee will signal its intention by flying the Second Substitute with no sound during the finish of the previous race.
- 5.4 After finishing the race, competitors shall stand clear of the finish line until all boats have finished that race.
- 5.5 One minute before the warning signal of the subsequent race, Second Substitute will be lowered with one sound signal.
- 5.6 The race committee will display the numeral pennants of the divisions to have another race. The absence of division numerical pennants indicates that all divisions will have another race. The race committee will endeavor to broadcast its intentions over VHF channel 73.

6 DIVISION FLAGS AND CHECK IN

- 6.1 Each boat shall display the numeral pennant for its division approximately 6-8 feet up on the backstay or, if the boat has no backstay, the starboard shrouds. Scratch Sheets listing each boat by its class will be available at the front desk of the club, from the RC boat, or on line at www.larchmontyc.org and www.yachtscoring.com by 1800, Friday, July 13 and at the Hospitality Desk during the event.
- 6.2 Before the start of the first race each day, each boat is requested to check in by sailing past the committee boat hailing her division and sail number.

7 RACING AND STARTING AREA

- 7.1 The racing area will be in the waters south of Milton Point.
- 7.2 The position of the starting area will be announced on VHF channel 73 during poor visibility.

8 COURSES

- 8.1 Courses will be windward-leeward using course configuration 2 through 6

For course:

- 2 - Consisting of 2 legs – windward, finish to leeward.
- 3 - Consisting of 3 legs – windward, leeward, finish to windward.
- 4 - Consisting of 4 legs – windward, leeward, windward, finish to leeward.
- 5 - Consisting of 5 legs – windward, leeward, windward, leeward, finish to windward.
- 6 - Consisting of 6 legs – windward, leeward, windward, leeward, windward, finish to leeward
- 7- Day Race around government marks. Government marks to be displayed from the signal boat and announced over channel 73. **See appendix A for mark descriptions and locations**
Marks for courses 2 - 7 are to be rounded to port

8.2 CLASSIC BOAT COURSES:

Saturday July 21, 2012

- 71 – Consisting of 3 legs- marks E, M, Finish – approx. 12.5 nm
- 72 - Consisting of 3 legs – marks G, E, Finish – approx. 11 nm
- 73 - Consisting of 2 legs – marks O, Finish – approx. 12 nm
- 74 - Consisting of 2 legs – mark S, Finish – approx. 15.5 nm
- 75 - Consisting of 4 legs - marks M,X,E, Finish – approx. 14 nm

All marks shall be left to port in courses 71 through 74 and to starboard in course 75

See appendix A for mark descriptions and location

Sunday July 22, 2012

Across the Sound Race- distance approx 11.2nm -Warning signal 1055

- 80 - From the Starting line to a finish off buoy Green Flasher “5” in front of Seawanhaka Corinthian Yacht Club approx. Lat/ Lon 40.53.852 and 73.30.598. Leaving Green Bell G”17” off Center Is Reef, Gong G “1” off Whitewood Pt, The Lighthouse red/white Spire @ 40.54.8 / 073.29.6, Red Nun N “2” and Red Nun N “4” all to starboard.

See appendix B for Chart of marks in Oyster Bay

- 8.3 The courses, 2 through 6, chosen for each division along with the approximate magnetic compass bearing and distance to the windward mark will be displayed on the course board of the committee boat before the warning signal.
- 8.4 The leeward mark will be approximately 100 yards to windward of the starting line.
- 8.5 The sample course board shows bearing, distance and course for six divisions:

Sample course board

(aft)			(forward)
Bearing	Range	Division	Course
2	0.	1-4	4
3	5		
0			

8.6 The windward finish line will be approximately 100 yards to windward of the windward mark.

8.7 The leeward finish line will be approximately 100 yards to leeward of the leeward mark.

9 MARKS

9.1 Rounding marks for courses 2 through 6 will be orange inflatable marks, except as provided under sailing instruction 12.

9.2 See Appendix A for course marks 71 through 75

10 START

10.1 Classes may not be started in numerical sequence.

10.2 In the event of a general recall, the starting sequence for the succeeding class will not be stopped. The recalled class will be re-started as described in 11.2. This changes rule 29.2

10.3 The starting line will be between an orange flag on the committee boat and a staff displaying an orange flag on the port end.

10.4 Boats whose preparatory signal has not been made shall stay well clear of the starting area and of all boats whose preparatory signal has been made.

11 RECALLS

11.1 The race committee will endeavor to identify recalled boats by broadcasting their sail numbers over VHF channel 73. Failure of a boat to hear her recall notification or the order of boats recalled shall not be grounds for redress.

11.2 If a general recall is made, the division will start after the last division in the starting sequence. If more than one division is recalled they will be restarted in the order recalled.

11.3 General recalls will extend the prescribed sequence of the time intervals and flags. The start of the first recalled division will be five (5) minutes after the last scheduled start and additional recalled divisions will follow at five (5) minute intervals in their proper sequence. This changes rule 29.2 and race signal First Substitute.

12 CHANGING the NEXT LEG of the COURSE

The new mark will be a yellow mark or an orange mark with a black band for the first change. When a subsequent change of course is signaled, the yellow mark or the banded orange mark will be replaced with the original mark.

13 THE FINISH

The finish line will be between a staff displaying a yellow flag on a committee boat and a yellow flagged buoy on the opposite side from the starting line, except on course 80, where the finish will be between staff displaying a yellow flag on a committee boat and Green Flasher "5" in front of Seawanhaka Corinthian Yacht Club. Lat/ Lon 40.53.852 and 73.30.598

14 WITHDRAWAL

A boat that retires from a race or does not intend to start a scheduled race shall promptly report this to the race committee boat via hailing or on the designated VHF channel.

15 TIME LIMIT

- 15.1 The time limit on courses 2 through 6 for the first boat in a division to sail the course and finish a race of 6 miles or less will be 2 ½ hours.
- 15.2 The time limit on courses 2 through 6 for the first boat in a division to sail the course and finish a race of more than 6 miles will be 3 ½ hours.
- 15.3 The time limit on courses 7 and 71 through 75 for the first boat in a division to sail the course and finish a race will be 5 hours. Time limit for course 80, Across the Sound Race will be 5 hours
- 15.4 Boats on courses 2 through 6 that fail to finish within 30 minutes after the first boat in that division to sail the course and finish will be scored "Time Limit Expired" (TLE). This changes rule 35.
- 15.5 Boats on courses 7 and 71 through 75 and 80 that fail to finish within 1 hour of the first boat in that division to sail the course and finish will be scored "Time Limit Expired" (TLE). This changes rule 35.

16 PROTEST

- 16.1 A boat intending to protest is requested to notify the race committee promptly after finishing that race.
- 16.2 (a) Protest forms are available at the front desk.
 - (b) Written protests shall be delivered to the protest committee desk located at the top of the main staircase of the clubhouse no later than 1 hour after the race committee comes ashore
 - (c) The expiration time for filing written protests will be posted on the official notice board.
 - (d) A list of protests in the approximate order in which they will be heard will be posted on the official notice board.
 - (e) Hearings will begin as soon as practicable after written protests are filed. Witnesses must be available when called. If they do not appear when called, they may not be heard.

17 ARBITRATION

- 17.1 For protests involving an alleged breach of a rule in Part 2 – When Boats Meet, a short arbitration hearing will be held prior to a protest hearing. This changes Part 5 Section B of the *RRS*.
- 17.2 After a written protest is filed, one representative from each boat will meet with the arbitrator. No witnesses will be allowed.
- 17.3 A boat that accepts fault at arbitration shall receive a penalty of 40% of the number of entries in her division (rounded upward 0.5) added to her finish position, except that she shall not be scored worse than DNF.
- 17.4 The arbitrator is neither the race nor protest committee; therefore, decisions made during arbitration cannot be grounds for redress and cannot be appealed.
- 17.5 The arbitrator will not be a member of the jury that hears the protest but will be permitted to observe testimony presented and offer testimony. This changes rule 63.3(a).

18 SCORING

- 18.1 One completed race constitutes a series.
- 18.2 If fewer than five (5) races are completed a boat's series score will be the total of her race scores. If five (5) or more races are completed a boat's series score will be the total of her race scores excluding her worst score subject to rule 90.3(b).
- 18.3 Boats failing to finish a race within the time limit will be scored "Time Limit Expired" (TLE) and will be given two (2) points more than the number of finishers in her division, except that she shall not be scored worse than DNF.

19 PRIZES

- 19.1 Series prizes will be awarded to the first three finishers in each division.
- 19.2 Presentation of awards will take place on the front lawn of the Larchmont Yacht Club on Sunday, July 22 after racing.
- 19.3 Presentation of awards for the Classic Boats Division Saturday's race will take place on the front lawn of the Larchmont Yacht Club on Saturday July 21 after racing. Awards for the Across the Sound Race will take place at Seawanhaka Corinthian Yacht Club July 22 after racing.

20 Disclaimer of Liability

Competitors participate in the regatta entirely at their own risk. See rule 4, Decision to Race. The organizing authority will not accept any liability for material damage or personal injury or death sustained in conjunction with or prior to, during, or after the regatta.

21 FURTHER INFORMATION

For further information please contact the Race Committee, Larchmont Yacht Club, 1 Woodbine Ave., Larchmont, New York 10538 Telephone: 914-468-7716 Fax: 914-468-7751
Website: www.larchmontyc.org Email: racecommittee@larchmontyc.org

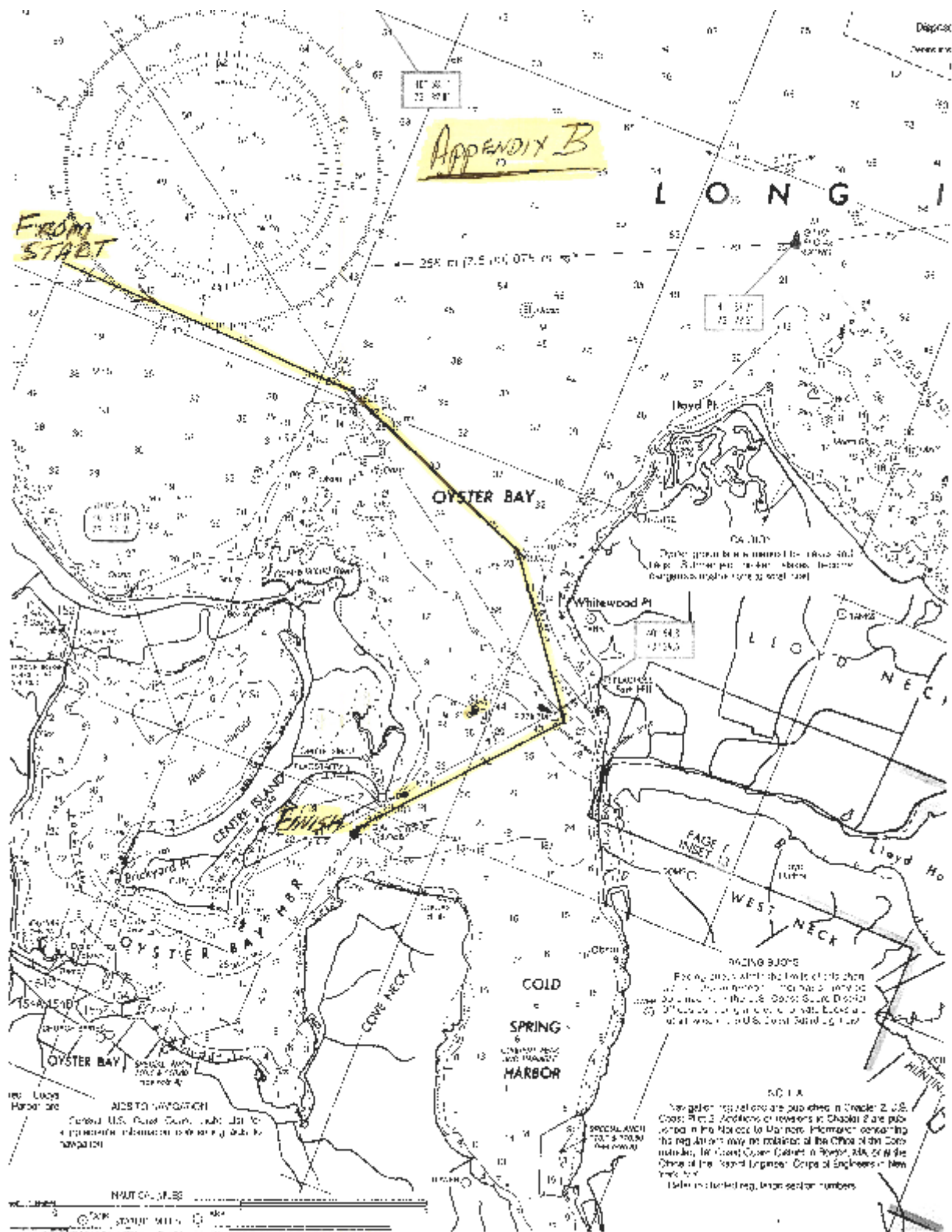
Jed Kelly – Regatta Committee Chairman & Event Principal Race Officer
Mary M. Savage – Protest Committee Chairman

APPENDIX – A

Code	Approximate Location	Description	LAT (degrees, decimal min.)	LON
H-hotel	Hen & Chickens	G "1" Fl G 4s BELL	40° 54.8'	73° 44.1'
G-golf	South of Hen & Chickens	R "2" Fl R 4s	40° 54.2'	73° 44.3'
F-foxtrot	North of Execution Rock	G C "1"	40° 53.5'	73° 44.2'
E-echo	Prospect Point	G "23" Fl G 4s GONG	40° 52.7'	73° 43.2'
D-delta	East of Prospect Point	R N "2"	40° 52.5'	73° 42.7'
C-charlie	East of Prospect Point	R "N" 4	40° 52.2'	73° 42.0'
Y-yankee	Off Weeks Point (Long Island)	G C "1"	40° 52.7'	73° 39.5'
Z-zulu	Mott Point	R "6" Bell	40° 51.6'	73° 40.4'
X-xray	Matinecock Point	G "21" Fl G 4s GONG	40° 54.6'	73° 38.2'
O-oscar	Oak Neck Point	C "19" Green Can	40° 55.5'	73° 34.2'
L- lima	Lloyd Point	G "15" FL G4s GONG	40° 57.7'	73° 29.3'
S-sierra	Mid Sound	R "32A" FL R 2.5s Bell	40° 58.1'	73°32.8'
P- papa	Cows	R "32" FL R 6s Bell	41°00.2'	73°31.4'
M-mike	Off Manursing Island	R "36" Bell	40° 58.1'	73° 38.8'
T-tango	Off Peningo Neck	R N "40A"	40° 56.1'	73° 41.3'
J-juliett	Off Mamaroneck Harbor	R "42" Fl R 2.5s BELL	40° 55.5'	73° 42.2'
I-india	East of Larchmont Breakwater	G C "1"	40° 55.3'	73° 43.2'

In addition to the government marks the race committee may use one yellow inflatable mark, which will be designated mark "A" (Alpha). If the race committee uses mark "A" it will announce its approximate location on the VHF communication channel.

APPENDIX – B



APPENDIX B

FROM START

ENGLISH

LONG I

OYSTER BAY

LLOYD NECK

OYSTER BAY HARBOR

WEST NECK

COLD SPRING HARBOR

AIDS TO NAVIGATION
Controlled U.S. Coast Guard Light List for a complete information concerning Aids to Navigation

NO. 1 A
This chart and its editions are published in Chapter 2, U.S. Coast Pilot 2. Editions or revisions to Chapter 2 are published in the Notices to Mariners. Information concerning this regulation may be obtained at the Office of the Commandant, U.S. Coast Guard, in Boston, MA, or at the Office of the Naval Engineer, Corps of Engineers, in New York City.

NAUTICAL MILES

Scale in statute, reg. length or numbers

Yacht Racing Association of Long Island Sound

Notice of Race and Sailing Instructions

2012 Mid-Sound One-Design

Issued March 11

Date	Event or Race Committee	Date	Event or Race Committee
May 26	* Memorial Day Regatta –(Saturday)	Aug 04	* YRA Championship Regatta
May 27	* Memorial Day Regatta –(Sunday)	Aug 05	* YRA Championship Regatta
Jun 02	S-Class	Aug 11	Vipers
Jun 09	IOD	Aug 18	LYC
Jun 16	AYC	Aug 25	~ no racing ~
Jun 23	LYC Portsmouth Distance Race	Sep 02	* Labor Day Regatta – (Sunday)
Jun 30	* Independence Day Regatta	Sep 08	* Leukemia Cup
Jul 01	* Independence Day Regatta	Sep 09	* Leukemia Cup
Jul 07	~ no racing ~	Sep 15	~ no racing ~
Jul 14	* Larchmont Race Week	Sep 22	Etchells
Jul 15	* Larchmont Race Week	Sep 29	Shields
Jul 21	* Larchmont Race Week	Oct 06	* Columbus Day Regatta – (Saturday)
Jul 22	* Larchmont Race Week	Oct 07	* Columbus Day Regatta – (Sunday)
Jul 29	~ no racing ~		

* **Special Event:** separate registration & entry fee required. (Special amendments to these Sailing Instructions may be issued for LYC's Memorial Day, Race Week, Leukemia Cup & Columbus Day Regattas, and AYC's Ind. Day Regatta & YRA Championship.)

1 RULES

- 1.1 Mid-Sound One-Design yacht racing will be governed by the rules as defined in The Racing Rules of Sailing 2009-2012 (RRS) and the YRA One-Design Championship Rules.
- 1.2 Part 5 Section B of the RRS is changed to provide for arbitration of protests of Part 2 rules.

2 ENTRIES

Boat owners may enter the series by filing a YRA membership dues form and paying the appropriate dues. Crews are encouraged to enroll as Associate Members of the YRA.

3 NOTICES TO COMPETITORS AND CHANGES IN SAILING INSTRUCTIONS

Notices to Competitors and changes in the Sailing Instructions for Special Events will be posted on the host website by 1400 on the day before the first start of the regatta.

4 SIGNALS MADE ASHORE

- 4.1 Signals made ashore will be displayed at the main flag pole of the club responsible for conducting that day's races and announced on VHF channels 71 and 72. Competitors not in sight of the flag pole may call the race committee on the same channels. AYC and LYC may repeat the signal if not responsible that day.
- 4.2 Race signal AP with two sounds means "The race is postponed. The warning signal will be made not less than 1 hour after AP is lowered." This modifies Race Signal AP.
- 4.3 Races may be postponed ashore not later than one (1) hour before the scheduled first warning signal.
- 4.4 Racing for the day may be abandoned ashore by displaying flags N over A with three sound signals.

Yacht Racing Association of Long Island Sound

5 SCHEDULE OF RACES

- 5.1 Two or more races may be held each day of regular YRA racing. The first warning signal is at 1425.
- 5.2 The first warning for LYC Race Week is 1225. For the AYC Independence Day Regatta, LYC Leukemia Cup, Columbus Day Regatta & YRA Championship, the first warning signal will be as stated in their Notice of Race.

6 CLASS FLAGS

- 6.1 Class flags will be numeral pennants. Class insignias may be substituted.

- 6.2  1- Vipers  2- Etchells  3- IODs  4- Shields  5- S-Class  6- Other  7- Other

7 RACING AREA

The racing area will be in the waters near Larchmont and American Yacht Clubs.

8 CHECK-IN AND RETIRING

- 8.1 Prior to the day's first warning signal, each boat is requested to sail by the stern of the race committee on starboard tack to check-in.
- 8.2 A boat that retires from a race shall notify the race committee as soon as possible.

9 THE COURSE

- 9.1 Course will be designated as follows with all rounding marks left to port:

Windward/ Leeward - with the starting line to leeward of the leeward mark. This course will be posted with a single digit indicating the number of legs to be sailed leaving the committee boat to starboard at the start and finish. The leeward mark will be located approximately 100 yards to windward of the starting line.

- 2- windward, finish to leeward
- 3- windward, leeward, finish to windward
- 4- windward, leeward, windward, finish to leeward
- 5- windward, leeward, windward, leeward, finish to windward

- 9.2 The race committee signal board (sample illustrated below) will display:

- (a) The approximate compass bearing to Mark 1.
- (b) The approximate range to Mark 1.
- (c) Class numbers in their starting sequence order. NOTE: Numbers may not be in numerical order.
- (d) The course number as per 9.1 above.

SAMPLE COURSE BOARD:

BEARING	RANGE	DIVISION	COURSE
3	1.25	1-5	4
5	.75	6-7	2
5			

If the course is the same for the succeeding class or classes, their course will be left blank.

10 MARKS

- 10.1 All original marks will be inflatable buoys of one color: either yellow or orange.
- 10.2 New Marks, as provided in Instruction 13, Changing the Next Leg of the Course, will be the alternative color (or, if necessary, a buoy with a black band).

Yacht Racing Association of Long Island Sound

11 THE START

- 11.1 Races will be started in accordance with rule 26. Any re-commencement of the starting system will be preceded by repetitive sounds and an announcement on Ch 68 approx. 1 minute prior to the warning signal.
- 11.2 The starting line will be between a staff displaying an orange or yellow flag on the race committee boat at the starboard end of the line and an orange or yellow flag or inflatable buoy at the port end.
- 11.3 Boats whose preparatory signal has not been made shall stand clear of the starting area and all boats whose preparatory signal has been made.
- 11.4 A boat that starts later than 10 minutes after her starting signal will be scored DNS without a hearing. This changes A4 and A5.
- 11.5 If there is only one boat in a class, that boat will be recorded for its participation, but not given an individual start. However, the Race Committee may allow that boat to start with another class, if approved by that class and the Race Committee. If so, both class flags will be displayed at their warning signal.
- 11.6 If two or more classes have fewer than three boats participating on a day, the race committee may, with the approval of the classes, combine their starts – but not for the first race of the day. If so, both class flags will be displayed at their warning signal. Classes will be scored separately.

12 RECALLS/ VHF BROADCASTS

- 12.1 The Race Committee will monitor VHF Ch 68 while on station for racing and will use that channel to announce its intentions.
- 12.2 The Race Committee will announce sail numbers of OCS boats via VHF Ch 68. Failure of a boat to hear her hail and the order and timing of such hail will not be grounds for redress.

13 CHANGING THE NEXT LEG OF THE COURSE

To change the next leg of the course, the Race Committee will set a new mark (or finish line) and remove the original mark as soon as practical. When in a subsequent change of course a new mark is replaced, it will be replaced with an original mark.

14 THE FINISH

- 14.1 The finish line will be between a staff displaying an orange flag on the committee boat and either Mark 1 (for courses 3 and 5) or an orange flag or an inflatable buoy (for courses 2 and 4). At the finish, the committee boat shall be left to starboard.
- 14.2 The race committee may assign a finish position to any unfinished boats providing the appropriate finish place for those boats can be determined in a reasonable manner.
- 14.3 If the race committee intends to start another race, it will display 2nd Substitute (with no sound) while boats are finishing.

15 TIME LIMIT

Unless otherwise posted or modified by the race committee, the time limit for the first boat to sail the course and finish will be 2 1/2 hours. Boats not finishing within 30 minutes after the first boat in that class will be scored Time Limit Expired (TLE). This modifies rule 35.

16 PROTESTS

- 16.1 It is recommended that protests and requests for redress be written on the RRS Protest Form.
- 16.2 For Special Events, written protests shall be filed within one hour after the Race Committee comes ashore. Protests will be heard by the sponsoring club as soon as practicable.
- 16.3 For all race days other than Special Events, written protests and requests for redress shall be faxed to the YRA at (516) 767-9204 or e-mailed to Office@YRALIS.org no later than the 1st business day following the race. These hearings will be heard on the following Thursday at 2000 at a location to be announced unless all parties agree otherwise.
- 16.4 A protest involving a rule of Part 2 will first go to arbitration. This modifies Part 5, Section B, of the RRS. Any protest unresolved by arbitration will be heard by the protest committee immediately following the arbitration meeting.

Yacht Racing Association of Long Island Sound

17 SCORING

- 17.1 The low point scoring system of Appendix A will apply with multiple races scheduled. A boat's series score will be the total of her race scores without exclusion.
- 17.2 Boats failing to finish within the time limit will be scored Time Limit Expired (TLE) and will be given two (2) points more than the number of finishers, except that she shall not be scored worse than DNF. This changes rule 35.
- 17.3 For Season scoring, Fleets may use the Cox-Sprague scoring system as shown in the One Design Championship Rules section of the YRA Year Book; however, each fleet may choose any scoring system.

18 PRIZES

YRA of LIS prizes will be awarded to each owner qualifying and placing first (1 or more qualifiers), second (5 or more), third (8 or more), fourth (15 or more) and fifth (20 or more) in season scores. In order to rank as qualifying, the owner must start at least 50% of the races, but not less than 10, designated by each fleet from the Schedule. This series qualifies a boat to compete for the Cow Bay Perpetual Trophy provided that the boat is in an ISAF-recognized class. This series qualifies a boat to compete for the Russell J. Nall Memorial Trophy provided that the boat is scored according to the Cox-Sprague Scoring System as adopted by the YRA of LIS. Prizes will be awarded as above for a series comprising the Memorial Day, Independence Day, YRA One-Design Championship and Columbus Day Regattas. This series will be scored according to the Cox-Sprague Scoring System. To qualify, an owner must start at least 50% of the races.

19 NAVIGATION RULES

All boats are cautioned to observe the Navigation Rules of the Road and to yield right of way to vessels restricted in their ability to maneuver. Racing sailboats are requested to avoid tugs and barges. Competing boats shall not communicate by VHF radio with commercial craft, except in an emergency. Failure to comply with this instruction may result in a rule 2 hearing against the offending boat.

20 RADIO COMMUNICATIONS

Except in an emergency, a boat shall neither make or receive radio transmissions not available to all boats. This restriction also applies to mobile phones.

As a condition of the participation of any boat in any race or related activity sponsored or undertaken by the Yacht Racing Association of Long Island Sound, Inc. (YRA) or its member clubs or organizations, the owner, helmsman, and each crew member agree that the safety of the boat and her crew and the decision whether or not to start or continue to race is solely their responsibility, and each of them waives all claims which he or she, or any heir, representative, successor or assign, may have against the YRA, its member clubs and organizations, and their respective officers, directors, members, committees, employees or agents, arising out of or in any way connected with participation in such race or activity.



LARCHMONT YACHT CLUB

ONE HUNDRED FOURTEENTH RACE WEEK

Saturday, July 14, Sunday July 15, Saturday, July 21, Sunday, July 22, 2012

SENIOR ONE-DESIGN CLASSES

First Amendment

to the

2012 YRALIS Mid-Sound One-Design Sailing Instructions

3 NOTICES TO COMPETITORS AND CHANGES IN SAILING INSTRUCTIONS

- 3.1 Changes to the sailing instructions and notices to competitors will be posted on the official notice board on the front porch of the Larchmont Yacht Club. Copies will also be available at the Hospitality Desk during the event.
- 3.2 Changes to the sailing instructions will be posted by 1100 on the day they take effect.

4 SIGNALS MADE ASHORE

- 4.2 Race Signal AP over Flag W with 2 sound signals means the race is postponed for the One-Design circle.

5 SCHEDULE OF RACES

- 5.1 The race committee intends to run multiple races each day. The number of races conducted each day is at the sole discretion of the race committee.
- 5.2 The first warning signal will be at 1225 each day. Classes may not be started in numerical order.

6 CLASS FLAGS

- 6.1 Classes are numbered as shown in the YRALIS instructions except as modified below and may not be started in sequence:
- 6.2 Vipers will only be racing on Saturday July 21 and Sunday July 22.

9 THE COURSE

The race committee may elect to give some Classes (RSK6, & 505s, etc) a substantially shorter windward leg than is posted for the other classes. If it does so, it will announce its intentions on VHF channel 68 and will post the number "0" on the signal board next to that Class signifying a shorter windward leg for those classes.

10 MARKS

If the race committee elects to give some Classes a shorter windward leg, it will use a white inflatable as the windward mark for those classes. This will not be a mark of the course for Classes 1 – 5. A new mark, as per instruction 13, Changing the Next Leg of the Course, will be the same white mark.

16 PROTESTS AND ARBITRATION

- 16.1 A boat intending to protest is requested to notify the race committee promptly upon finishing that race.
- 16.2
 - (a) Protest forms are available at the front desk.
 - (b) Written protests shall be delivered to the protest committee desk located at the top of the main stairs of the clubhouse no later than one hour after the race committee comes ashore.
 - (c) The expiration time for filing written protests will be posted on the official notice board.
 - (d) A list of protests in the approximate order in which they will be heard will be posted on the official notice board.
 - (e) Hearings will begin as soon as practicable after written protests are filed. Witnesses must be available when called. If they do not appear when called, they may not be heard.
- 16.3 (a) After a written protest is filed, one representative from each boat will meet with an arbitrator. No witnesses will be allowed.

- (b) A boat that accepts fault at the arbitration shall receive a penalty of 40% of the number of competing boats (round 0.5 upward) added to their her position, except that she shall not be scored worse than DNF.
- (c) The arbitrator is neither a race nor protest committee; therefore, decisions made during arbitration cannot be grounds for redress and cannot be appealed.
- d) The arbitrator will not be a member of the jury that hears the protest, but will be permitted to observe the testimony at the hearing and offer testimony. This changes rule 63.3(a).

17 SCORING

- 17.1 The Low-Point Scoring System of App. A4 will apply. One completed race constitutes a series.
- 17.2 If fewer than five races are completed, a boat's series score will be the total of her race scores. If five or more races are completed a boat's series score will be the total of her race scores excluding her worst score subject to rule 90.3 (b).
- 17.3 Boats failing to finish within the time limit will be scored Time Limit Expired (TLE) and will be given two (2) points more than the number of finishers, except that she shall not be scored worse than DNF. This changes rule 35.

18 PRIZES

Series prizes will be awarded after the conclusion of racing on Sunday, July 22, for first, second and third places in each class, on the front lawn of the Larchmont Yacht Club.

19 Disclaimer of Liability

Competitors participate in the regatta entirely at their own risk. See rule 4, Decision to Race. The organizing authority will not accept any liability for material damage or personal injury or death sustained in conjunction with or prior to, during, or after the regatta.

FURTHER INFORMATION

For further information please contact the Regatta Committee, Larchmont Yacht Club, 1 Woodbine Ave., Larchmont, NY 10538. Telephone 914-468-7716. Fax 914-468-7751.

Website: www.larchmontyc.org. Email: racecommittee@larchmontyc.org

Jed Kelly– Regatta Committee Chairman
Nicholas E. Langone– Event Principal Race Officer
Mary M. Savage – Protest Committee Chairman



THE LARCHMONT YACHT CLUB
ONE HUNDRED FOURTEENTH RACE WEEK
Vanguard 15
Saturday, July 14 and Sunday, July 15, 2012
SAILING INSTRUCTIONS

1 RULES

- 1.1 This regatta will be governed by the *rules* as defined in *The Racing Rules of Sailing 2009-2012*.
1.2 Part 5 Section B of the *RRS* is changed to provide for arbitration of protests of Part 2 rules.

2 NOTICES TO COMPETITORS

Notices to competitors will be posted on the official notice board located on the front porch of the main clubhouse.

3 SIGNALS MADE ASHORE

Signals made ashore will be displayed from the flagpole located on the front lawn. If a postponement is signaled ashore, Race Signal AP over V with 2 sound signals means the race is postponed for the Vanguard 15 circle, the first warning signal will be made not less than 30 minutes after the “AP” over “V” is lowered.

4 SCHEDULE OF EVENTS

Saturday, July 14

- 1100 Skippers’ Meeting on the front lawn of Larchmont YC
1130 Harbor Start
1225 First Warning

Sunday, July 15

- 1130 Harbor Start
1225 First Warning

5 RACING AREA

The racing area will be in the waters off the breakwater of Larchmont Harbor.

6 COURSES AND MARKS

- 6.1 Courses will be a Harry Anderson, “H”, or windward-leeward using either configuration “L” or “W.”

- H Consisting of four (4) marks – windward (to port), gybe (to port), starting pin (to starboard), leeward mark (to port), finishing to windward leaving the race committee boat to port.
- W Consisting of two (2) marks (with possible offset mark at the windward mark), windward, leeward, finishing to windward leaving the race committee boat to port.
- L Consisting of a weather mark (with an offset mark) – windward, offset, finishing to leeward leaving the race committee boat to starboard.

- 6.2 Courses will be announced before each race from the committee boat.
- 6.3 Course lengths are at the discretion of the committee.
- 6.4 The starting line in course “W” may be disregarded except when maneuvering to start.
- 6.5 For courses “L” and “W”, offset marks may be used at the windward mark and/or the leeward mark and will be set at the discretion of the committee to the port side of said mark(s).
- 6.6 For courses “W” and “H”, the Race Committee may set a gate at the leeward mark.
- 6.7 All marks, including the offset mark(s) if used, shall be rounded to port except for course “H” and the gate, if used.
- 6.8 All marks, excluding the offset marks if used, will be orange hippity hops. The offset marks, if used, will be white hippity hops.

7 THE START

- 7.1 Races will be started in accordance with the Sound Signal Starting System of Appendix S.
- 7.2 The starting line will be between an orange flag on the committee boat and a staff displaying an orange flag on the port end.

8 RECALLS

- 8.1 The race committee will endeavor to identify recalled boats by sail number using a loud hailer.
- 8.2 Failure of a boat to hear her recall notification and the order and timing of such hail shall not be grounds for redress.
- 8.3 If flag “I” is displayed prior to the starting sequence of the race, rule 30.1, “I Flag Rule”, will be in effect for that start. This changes Race Signals. The race committee will endeavor to hail boats by sail number with a loud hailer.

9 THE FINISH

The finish line will be between a yellow flag on the committee boat and a staff displaying a yellow flag on a nearby buoy.

10 TIME LIMIT

The time limit for the first boat to sail the course and finish will be 45 minutes. Boats failing to finish within 15 minutes after the first finisher will be scored “Time Limit Expired” (TLE) as described in SI 13.4

11 WITHDRAWAL

A boat that withdraws from the race or that does not intend to start a scheduled race shall notify the race committee at the first opportunity.

12 PROTESTS

- 12.1 A boat intending to protest shall report this to the race committee promptly after finishing that race.
- 12.2 Written protests shall be delivered to the protest committee desk located on the second floor of the club house no later than 1 hour after the race committee comes ashore.
- 12.3 Protest forms are available at the front desk of the yacht club.
- 12.4 The expiration time for filing protests and the list of protests in the approximate order in which they will be heard will be posted on the official notice board.
- 12.5 Hearings will begin as soon as practicable.

13 SCORING

- 13.1 The race committee plans to run multiple races.
- 13.2 One completed race constitutes a series.
- 13.3 A boat’s series score will be the total of her race scores if five or fewer races are completed. A boat’s series score will be the total of her race scores excluding her worst score if at least six races are completed.
- 13.4 Boats scored TLE will receive points equal to all boats that have finished within the time limit plus one.

14 ARBITRATION

- 14.1 For protests involving an alleged breach of a rule in Part 2 – When Boats Meet, a short arbitration hearing will be held prior to a protest hearing. This changes Part 5 Section B of the *RRS*.
- 14.2 After a written protest is filed, one representative from each boat will meet with the arbitrator. No witnesses will be allowed.
- 14.3 A boat that accepts fault at the arbitration will receive a penalty of 40% of the number of entries (rounded upward 0.5) added to her finish position, except that she shall not be scored worse than DNF.
- 14.4 The arbitrator is neither the race nor protest committee; therefore, decisions made during arbitration cannot be grounds for redress and cannot be appealed.
- 14.5 The arbitrator will not be a member of the jury that hears the protest but will be permitted to observe testimony presented and offer testimony. This changes rule 63.3(a).

15 PRIZES

Prizes will be awarded for first, second and third place finishers following the conclusion of racing on Sunday, July 15, 2012.

16 Disclaimer of Liability

Competitors participate in the regatta entirely at their own risk. See rule 4, Decision to Race. The organizing authority will not accept any liability for material damage or personal injury or death sustained in conjunction with or prior to, during, or after the regatta.

17 FURTHER INFORMATION

For further information please contact the Larchmont Yacht Club, 1 Woodbine Ave., Larchmont, NY 10538. Telephone 914-468-7716 or Fax 914-468-7751.

Website: www.larchmontyc.org. Email: racecommittee@larchmontyc.org

Jed Kelly – Regatta Committee Chairman
Buddy Wolf – Event Principal Race Officer
Mary Savage – Protest Committee Chairman



Larchmont Yacht Club

One Hundred Fourteenth Race Week

Ideal 18 Class

Sunday July 15, 2012

SAILING INSTRUCTIONS

1 RULES

- 1.1 This regatta will be governed by the *rules* as defined in *The Racing Rules of Sailing 2009-2012* (RRS).
1.2 Part 5 Section B is changed to provide for arbitration of protests of Part 2 rules.

2 NOTICES AND CHANGES TO THE SAILING INSTRUCTIONS

- 2.1 Notices to competitors will be posted on the official notice board located on the front porch or hospitality Desk of the main clubhouse.
2.2 Any changes in the sailing instructions will be posted not later than 0930 on the day of the regatta. Copies will be available at the front desk of the Club and posted on the Official Notice Board.

3 SIGNALS MADE ASHORE

Signals made ashore will be displayed from the flagpole located on the front lawn. If a postponement is signaled ashore, the first warning signal will be made not less than 45 minutes after the “I” over “AP” is lowered.

4 SCHEDULE OF EVENTS

- 4.1 Saturday July 16
- | | |
|------|---|
| 1100 | Skippers’ Meeting at the flag pole on the Club front lawn |
| 1225 | First Warning |
| 1700 | No warning signal will be made after this time |
- 4.2 The regatta committee intends to run multiple races. The number of races conducted is at the sole discretion of the regatta committee. If a subsequent race will be run, the race committee will signal its intention by flying flag Second Substitute with no sound during the finish of the previous race.

5 RACING AREA

The racing area will be in the waters off Larchmont Harbor as described at the skippers’ meeting

6 COURSES AND MARKS

- 6.1 Course will be windward-leeward using either configuration “L” or “W”
For course:
- 1 Consisting of a weather mark– windward, finishing to leeward leaving the race committee boat to port.
 - 2 Consisting of two (2) marks – windward, leeward, finishing to windward leaving the race committee boat to starboard.
 - 3 Consisting of two (2) marks – windward, leeward, windward, finishing to leeward leaving the race committee boat to port.
 - 4 Consisting of two (2) marks – windward, leeward, windward, leeward, finishing to windward leaving the race committee boat to starboard.

- 6.2 The leeward mark will be to leeward of the starting line.
- 6.3 Courses will be announced before each race from the committee boat.
- 6.4 Course lengths are at the discretion of the committee.
- 6.5 Marks will be yellow or orange hippity-hops and shall be rounded to port.

7 THE START AND FINISH LINE

- 7.1 Races will be started in accordance with Sound-Signal Starting System of Appendix S.
- 7.2 The starting line will be between an orange flag on the committee boat and a floating staff displaying an orange flag on the port end.

8 RECALLS

- 8.1 The race committee will endeavor to identify recalled boats by sail number using a loud hailer.
- 8.2 Failure of a boat to hear her recall notification and the order and timing of such hail shall not be grounds for redress.
- 8.3 If flag "T" is displayed prior to the starting sequence of the race, rule 30.1 will be in effect for that start.

9 TIME LIMIT

The time limit for the first boat to sail the course and finish shall be 1 hour. Boats failing to finish within 15 minutes after the first boat will be scored "Time Limit Expired" (TLE). This changes rule 35.

10 WITHDRAWAL

A boat that withdraws from the race or that does not intend to start a scheduled race shall notify the race committee at the first opportunity.

11 PROTESTS

- 11.1 A boat intending to protest is requested to notify the race committee promptly after finishing that race.
- 11.2
 - (a) Protest forms are available at the front desk.
 - (b) Written protests shall be delivered to the protest committee desk located at the top of the main staircase of the clubhouse no later than 1 hour after the race committee comes ashore.
 - (c) The expiration time for filing written protests will be posted on the official notice board.
 - (d) A list of protests in the approximate order in which they will be heard will be posted on the official notice board.
 - (e) Hearings will begin as soon as practicable after written protests are filed. Witnesses must be available when called. If they do not appear when called, they may not be heard.

12 ARBITRATION

- 12.1 For protests involving an alleged breach of a rule in Part 2 – When Boats Meet, a short arbitration hearing will be held prior to a protest hearing. This changes Part 5 Section B of the *RRS*.
- 12.2 After a written protest is filed, one representative from each boat will meet with the arbitrator. No witnesses will be allowed.
- 12.3 A boat that accepts fault at arbitration will receive a penalty of 40% of the number of entries (rounded upward 0.5) added to her finish position, except that she shall not be scored worse than DNF.
- 12.4 The arbitrator is neither the race nor protest committee; therefore, decisions made during arbitration cannot be grounds for redress and cannot be appealed.
- 12.5 The arbitrator will not be a member of the jury that hears the protest but will be permitted to observe testimony presented and offer testimony. This changes rule 63.3(a).

13 SCORING

- 13.1 A boat's series score will be the total of her race scores without exclusion.
- 13.2 One race constitutes a series.
- 13.3 Boats failing to finish within the time limit will be scored Time Limit Expired (TLE) and will be given two (2) points more than the number of finishers, except that she shall not be scored worse than DNF. This changes rule 35.

14 PRIZES

Prizes will be awarded on Sunday, July 15, on the front lawn of the Larchmont Yacht Club
First place for three or more competitors.
Second place for four or more competitors.
Third place for five or more competitors.

15 Disclaimer of Liability

Competitors participate in the regatta entirely at their own risk. See rule 4, Decision to Race. The organizing authority will not accept any liability for material damage or personal injury or death sustained in conjunction with or prior to, during, or after the regatta.

16 FURTHER INFORMATION

For further information please contact the Larchmont Yacht Club, 1 Woodbine Ave., Larchmont, NY 10538.
Telephone 914-468-7736. Fax 914-834-2890.
Website: www.larchmontyc.org. Email: sailingdirector@larchmontyc.org

Jed Kelly– Regatta Committee Chairman
Lincoln White– Event Principal Race Officer
Mary M. Savage – Protest Committee Chairman