

# J/70 Fall Brawl & J/80 North American Championship



Tuesday-Sunday, 17-22 October 2017

ORGANIZING AUTHORITY  
Eastport Yacht Club

## SAILING INSTRUCTIONS

### 1 RULES

- 1.1 Racing will be governed by the *rules* as defined in the current *Racing Rules of Sailing* (RRS).
- 1.2 The International J/70 Class Rules (2016) shall apply.
- 1.3 The J/80 International Class Rules (2013) shall apply.
- 1.4 The notation “[DP]” in a rule in these Sailing Instructions (SIs) means that the penalty for a breach of that rule may, at the discretion of the Protest Committee, be less than disqualification.
- 1.5 The notation “[NP]” in a rule in these SIs means that a boat may not protest another boat for breaking that rule. This changes RRS 60.1(a).

### 2 NOTICES TO COMPETITORS

Notices to Competitors will be posted on the Official Notice Board located outside, near the ground floor rear entryway doors and “Sparky’s Shed” on the Eastport Yacht Club (EYC) grounds.

### 3 CHANGES TO SAILING INSTRUCTIONS

Any changes in the Sailing Instructions will be posted before 0800 hours on the day it will take effect, except that any change in the schedule of races will be posted by 2000 hours on the day before it will take effect.

### 4 SIGNALS MADE ASHORE

- 4.1 Signals made ashore will be displayed from the EYC flagpole, located on the waterside of the clubhouse.
- 4.2 When flag “AP” is displayed ashore, “1 minute” is replaced with “not less than 60 minutes.” This changes RRS Signals.

### 5 SCHEDULE

- 5.1 The schedule of events is:
- |                 |           |  |
|-----------------|-----------|--|
| Tue, 17 October | 1500-1900 | J/80 class measurement                                     |
| Wed, 18 October | 1300      | Practice races presented by J/World Annapolis              |
|                 | 1500-1900 | J/80 class measurement & crew weigh-in                     |
|                 | 2000      | SIs posted to EYC website, Official Notice Board           |
| Thu, 19 October | 1200-1900 | J/80 event registration, class measurement & crew weigh-in |
|                 | 1900      | Entry & registration closes                                |
|                 | 1900      | J/80 NAC competitors meeting and social at EYC             |
| Fri, 20 October | 0800-0900 | J/80 crew weigh-in   |
|                 | 1100      | Warning Signal for first race of the day, J/80 NAC only    |
|                 |           | Subsequent races as signaled by the Race Committee (RC)    |
|                 |           | J/80 NAC competitors social at EYC after racing            |
|                 |           | J/World Annapolis post-race competitors debrief            |
|                 | 1900      | J/70 FB competitors meeting and social at EYC              |



Sat, 21 October	1100	Warning Signal for first race of the day Subsequent races as signaled by the Race Committee Competitors social at EYC after racing J/World Annapolis post-race competitors debrief
Sun, 22 October	1800 1000	Competitors dinner at EYC Warning Signal for first race of the day Subsequent races as signaled by the Race Committee NO Warning signal after 1400 hours Awards party at EYC after racing

- 5.2 For the J/70 FB, a maximum of eight (8) races are scheduled, of which one (1) completed race shall constitute a series.
- 5.3 For the J/80 NAC, a maximum of fifteen (15) races are scheduled, of which one (1) completed race shall constitute a series.

**6 CLASS FLAGS**

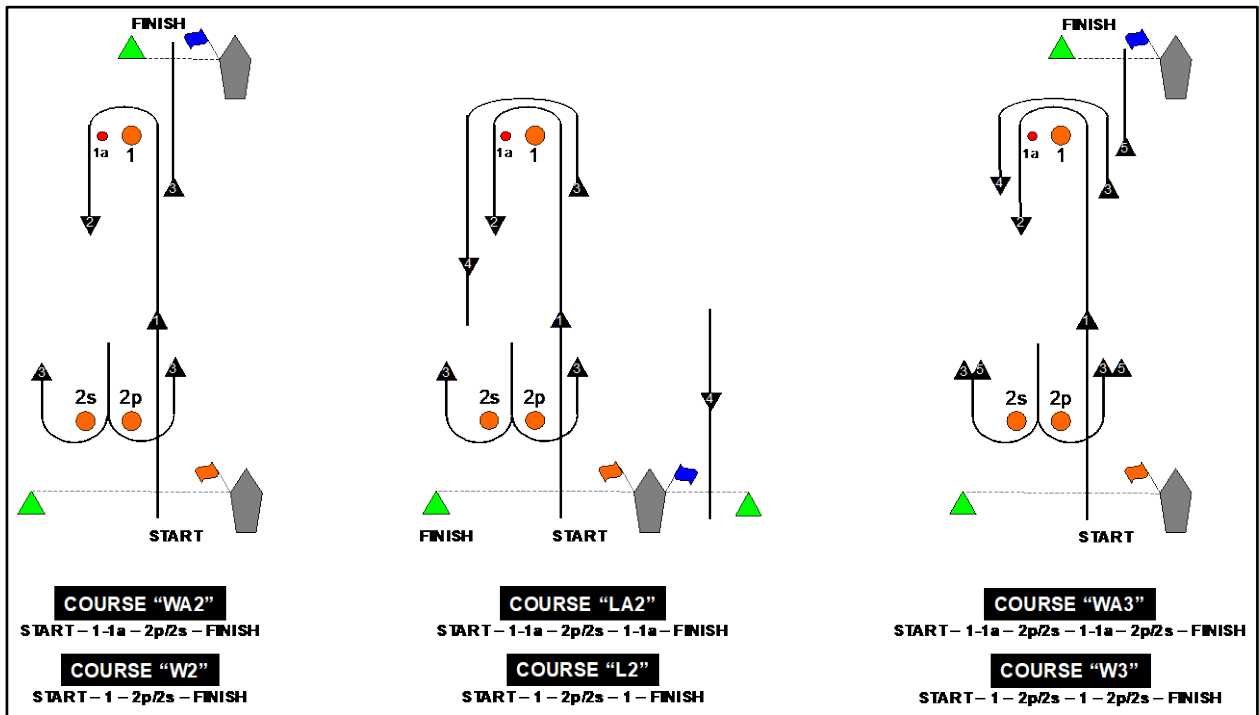
- 6.1 For the J/70 FB, the Warning signal will be the “J/70” flag, a white flag with a blue J/70 logo.
- 6.2 For the J/80 NAC, the Warning signal will be flag “J.”

**7 RACING AREA**

The racing area will be on the Chesapeake Bay off the mouth of the Severn River.

**8 COURSES**

- 8.1 The diagrams below show the courses, including the approximate angles between legs, the order in which the marks are to be passed, and the side on which each mark is to be left.



- 8.2 The approximate magnetic heading, and approximate distance to the first mark shall be designated by placards on the side of the Signal Vessel opposite the start line.
- 8.3 When the first mark of the course is to be a change mark, code flag “C” will be displayed by the Signal Vessel before the warning signal, accompanied by a series of repetitive sound signals.
- 8.4 If only one gate mark is set, boats shall round the single mark to port.

## 9 MARKS

- 9.1 The start mark (in the absence of an anchored RC Vessel) and finish mark will be green tetrahedrons. Leeward and windward marks will be 5-foot orange cylinders. The windward mark may have an offset mark, which will be a 3-foot red cylinder. All marks display "EYC" in black block lettering, except the offset mark, which displays "VALIANT."
- 9.2 The first change mark shall be a yellow tetrahedron. The mark displays "EYC" in black block lettering.

## 10 THE START

- 10.1 Approximately fifteen (15) minutes before the Warning signal, the RC will announce the starting order for the first race of the day.
- 10.2 Races will be started using RRS 26.
- 10.3 The starting line will be between a staff displaying an orange flag on the RC Signal Vessel at the starboard end and either a staff displaying an orange flag on an RC mark vessel, or the course side of a green tetrahedron, at the port end.
- 10.4 A boat starting later than five (5) minutes after her starting signal shall be scored Did Not Start without a hearing. This changes RRS 63.1, A4.1, and A5.
- 10.5 The RC intends to hail the sail numbers of OCS boats after the starting signal on VHF channel 73. The failure of any boat to hear the hail, the timing of the hail, failure to hail any boats, or the order of the boats in the hail shall not be grounds for granting redress. This changes RRS 41 and 62.1.

## 11 CHANGES TO THE NEXT LEG OF THE COURSE

To change the next leg of the course, the RC will lay a new mark (or move the finishing line) and remove the original mark as soon as practicable. When in a subsequent change a new mark is replaced, it will be replaced by an original mark.

## 12 THE FINISH

The finish line shall be between the staff or halyard on the RC Signal Vessel displaying a blue flag and the course side of the finishing mark.

## 13 PENALTY SYSTEM

### 13.1 PENALTY AT TIME OF THE INCIDENT

The first two sentences of RRS 44.1 are changed to: "A boat may take a One-Turn Penalty when she may have broken one or more rules of Part 2 or RRS 31 in an incident while racing. However, when she may have broken one or more rules of Part 2 while in the zone around a mark other than a starting mark, her penalty shall be a Two-Turns Penalty."

### 13.2 PENALTY TAKEN AFTER A RACE

After a race, a boat that may have broken one or more rules of Part 2 or RRS 31 in an incident while racing may take a Post-Race Penalty for that incident. A boat takes the penalty by delivering a written notice to the race office or sending an email to [race.committee@eastportyc.org](mailto:race.committee@eastportyc.org) that identifies the race number and when and where the incident occurred. The penalty shall be a 30% Scoring Penalty, calculated as stated in RRS 44.3(c). The written notice must be delivered within 75 minutes following the RC Signal Vessel's dock time.

## 14 TIME LIMIT

- 14.1 If no boat reaches the first windward mark within thirty (30) minutes of the start of her race, the race shall be abandoned.
- 14.2 If no boat sails the course and finishes within two (2) hours of the start of her race, the race shall be abandoned.
- 14.3 Boats still racing fifteen (15) minutes after the first boat in her class finishes, and not thereafter retiring, being penalized or given redress, will be scored TLE (Time Limit Expired) without a hearing. This changes RRS A4 and A5.

## 15 SCORING INQUIRIES, PROTESTS, AND REQUESTS FOR REDRESS

- 15.1 **[DP] [NP]** A boat intending to protest an incident in the racing area shall inform the RC when she finishes, or via VHF channel 73 when leaving the racecourse without finishing, or via email at [race.committee@eastportyc.org](mailto:race.committee@eastportyc.org). This changes RRS 61.1(a).



- 15.2 Scoring Inquiries, Protests and Requests for Redress shall be filed with the RC Office (first floor, on the waterside of the building) within the Protest Time Limit. Forms are available outside of the office.
- 15.3 For each class, the protest time limit is sixty (60), minutes after the RC Signal Vessel dock time. This posting constitutes the notification required in RRS 61.1b and 63.2. The time limit for a Request for Redress based on an incident in the racing area shall be the Protest Time Limit. This changes RRS 62.2.
- 15.4 The Protest Committee will attempt to hear protests in the order of receipt by the Protest Secretary. Hearings may be scheduled prior to the Protest Time Limit if the parties and witnesses are present. Parties and witnesses to a hearing shall remain on call in the vicinity of the protest room.
- 15.5 When the RC or Protest Committee protests a boat, the requirements of RRS 61.1(b) to notify the boat may be met by posting a list of protested boats on the Official Notice Board before the end of the protest time limit.
- 15.6 On the last day of the regatta, a request for redress based on a protest committee decision shall be delivered no later than thirty (30) minutes after the decision was posted. This changes RRS 62.2.

## 16 REPORT OF THE RACE COMMITTEE

The Report of the Race Committee regarding incidents on the water shall be posted on the Official Notice Board no later than fifteen (15) minutes after the Signal Vessel docks. The report shall include scoring-related actions (DNC, DNS, OCS, ZFP, UFD, BFD, DNF, TLE) and the Signal Vessel dock time.

## 17 SCORING

- 17.1 The Low Point scoring system shall apply.
- 17.2 For the J/70 FB, a boat's series score will be the total of her race scores; no race scores will be excluded.
- 17.3 For the J/80 NAC, a boat's series score will be the total of her race scores if five (5) or fewer races are completed. One (1) race score will be excluded if six (6) or more races are completed.
- 17.4 Boats to be scored TLE and not thereafter retiring, being penalized, or given redress will be scored points equal to the number of boats finishing within the time limit plus two (2) points by the RC without a hearing. This changes RRS 35, A4, and A5.

## 18 SAFETY

- 18.1 **[DP] [NP]** A boat that retires from a race shall notify the RC as soon as possible either by hail or on VHF channel 73.
- 18.2 **[DP] [NP]** A boat shall not exercise right of way, cross in proximity to, or interfere with reasonable transit of the race area by commercial of any kind. Boats must take evasive action well in advance of a potentially dangerous situation. The US Coast Guard, ship captains, and bay pilots have been encouraged to report any incident they observe.
- 18.3 **[NP]** A boat without way may use any means of propulsion to avoid underway commercial traffic, provided:
  - (a) the boat does not gain an advantage;
  - (b) using the propulsion is the boat's only means of avoiding the commercial traffic; and,
  - (c) the boat submits a report (in writing or by email) to the RC by the protest filing deadline that describes the incident and the boat's actions.
- 18.4 **[NP]** The RC or Protest Committee may protest a boat for SI 20 based on information received from any source. The protest time limit does not apply. This changes RRS 60.2, 60.3, and RRS 61.3.

## 19 REPLACEMENT OF CREW OR EQUIPMENT

- 19.1 **[DP]** For the J/80 NAC only, substitution of competitors will not be allowed without prior written approval of the RC. A request for substitution shall be submitted to the RC at the first reasonable opportunity.
- 19.2 **[DP]** For the J/80 NAC only, substitution of damaged or lost equipment will not be allowed unless authorized by the RC. A request for substitution shall be submitted to the RC at the first reasonable opportunity.

## 20 EQUIPMENT AND MEASUREMENT CHECKS

A boat and/or its equipment may be inspected at any time for compliance with the CR and the Sailing Instructions. On the water, a boat may be instructed by a Technical Committee equipment inspector or measurer to proceed immediately to a designated area for inspection.





## 21 DISPOSAL OF TRASH

**[DP]** This is a Clean Regatta; all competitors are strongly encouraged to use multi-use water bottles instead of disposable water bottles, and to recycle whenever possible. A competitor shall not intentionally put trash in the water.

## 22 HAUL-OUT RESTRICTIONS

22.1 For the J/70 FB, there are no haul-out restrictions.

22.2 **[DP]** For the J/80 NAC, all boats shall be launched (in the water) by 1900 hours on Thursday, 19 October 2017. A boat shall not be hauled out during the regatta without written approval by the RC Principal Race Officer.

## 23 RADIO COMMUNICATION

23.1 **[DP] [NP]** Competitors shall have a working VHF radio capable of communicating on VHF channels 9, 13, 16, and 73.

23.2 RC shall communicate with competitors on VHF channel 73.

23.3 Boats are encouraged to make contact with commercial traffic on VHF channel 13, as required for safety.

## 25 PRIZES

24.1 For the J/70 FB, the following overall awards will be presented at EYC on Sunday, 22 October 2017, after the conclusion of racing.

1<sup>st</sup> Place for three (3) or more entries;

2<sup>nd</sup> Place for six (6) or more entries;

3<sup>rd</sup> Place for seven (7) or more entries; and,

4<sup>th</sup> Place for fifteen (15) or more entries.

Additionally, the name of the winning skipper will be added to the J/70 Fall Brawl Perpetual Award.

24.2 For the J/80 NAC, daily awards will be presented at EYC after racing concludes.

24.3 For the J/80 NAC, the following overall awards will be presented at EYC on Sunday, 22 October 2017, after the conclusion of racing.

1<sup>st</sup> Place for three (3) or more entries;

2<sup>nd</sup> Place for six (6) or more entries;

3<sup>rd</sup> Place for seven (7) or more entries; and,

4<sup>th</sup> Place for fifteen (15) or more entries.

Additionally, the J/80 North American Championship perpetual trophy will be awarded.

24.4 Additional awards may be presented at the discretion of the Organizing Authority.

## 25 DISCLAIMER OF LIABILITY

Competitors participate in the J/70 FB and the J/80 NAC entirely at their own risk; see RRS 4. The Organizing Authority will accept no liability for material damage, personal injury, or death sustained in conjunction with or prior to, during, or after the event.

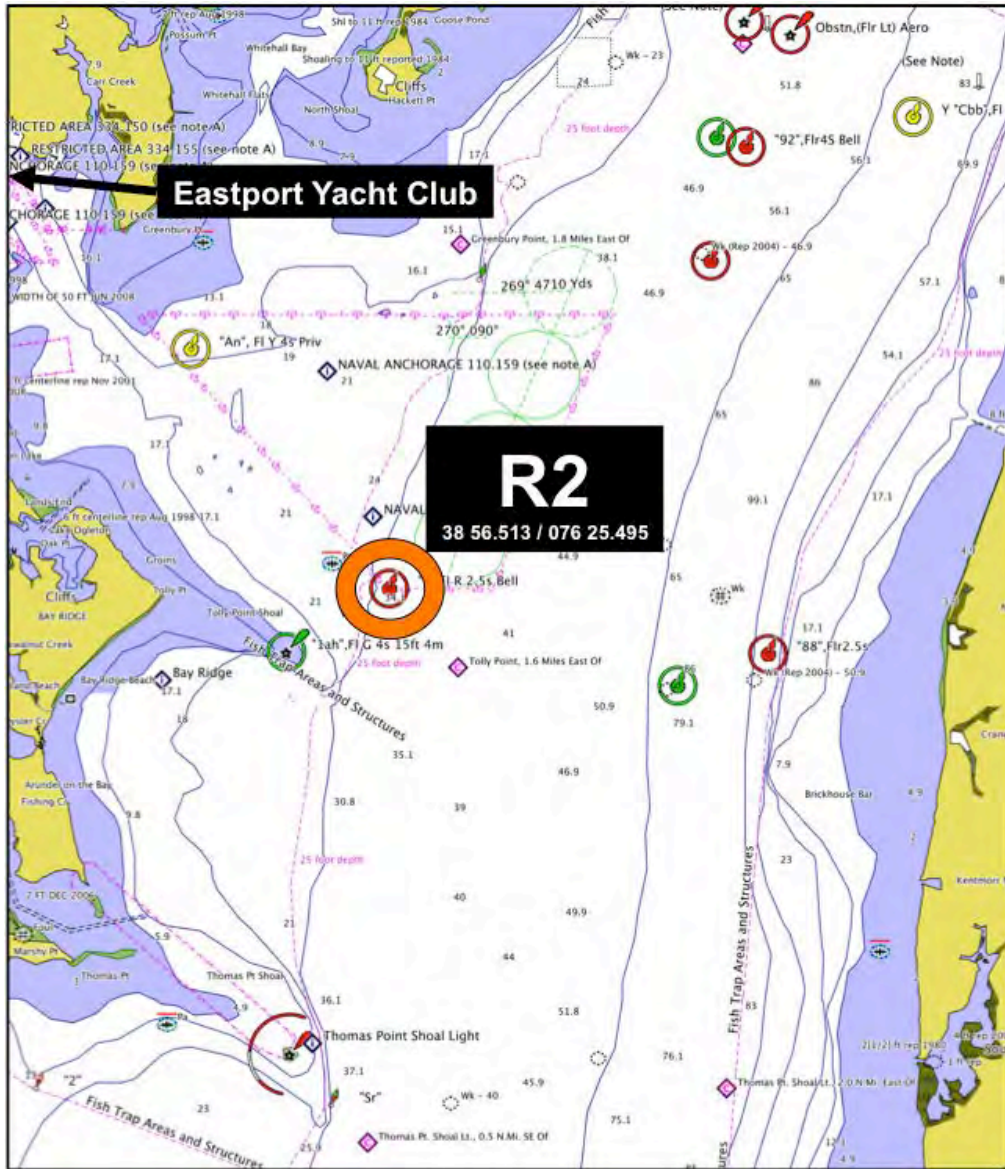
## 26 INSURANCE

**[DP] [NP]** Each boat shall be insured with valid third party liability insurance with a minimum coverage of \$300,000.

## 27 SOCIAL

EYC extends the courtesy of its bar and galley to all participants and guests during the event.





**FIGURE 1**

**J/70 Fall Brawl & J/80 NA Championship  
Rendezvous Location and Racing Area**

