



**2017 Bayfield Race Week**  
**Wayzata Yacht Club (WYC) - Apostle Islands Station (“AIS”)**  
**July 3 - 7, 2017**  
**Bayfield Wisconsin, USA**

**SAILING INSTRUCTIONS**

**1. Rules.**

- 1.1 The races will be governed by the rules as defined in the *Racing Rules of Sailing*.
- 1.2 The following Racing rules will be changed as follows.
  - 1.2.1 SI 4.2 changes RRS Race Signal AP
  - 1.2.2 SI 9.1.4 changes RRS 18 and RRS 28 and adds the definition of a waypoint
  - 1.2.3 SI 10.4.1 changes RRS 29.1
  - 1.2.4 SI 10.4.2 changes RRS 29.2
  - 1.2.5 SI 12.1 changes RRS 44.1
  - 1.2.6 SI 15.2 changes RRS 35, A4 and A5
  - 1.2.7 SI 15.3 changes RRS A2
- 1.3 [DP] and [NP]
  - 1.3.1 The notation ‘[DP]’ in a rule in the NOR or SIs means that the penalty for a breach of that rule may, at the discretion of the Protest Committee (“PC”), be less than disqualification. SI 1.3.1 changes RRS 64.1.
  - 1.3.2 The notation ‘[NP]’ in a rule in the NOR or SIs means this rule may not be protested by a boat. SI 1.3.2 changes RRS 60.1(a).

**2. Notice to Competitors.**

- 2.1 Official notices to competitors will be posted on the Official Notice Board located at Bayfield Pavilion on Rittenhouse Avenue; specifically at the entrance doors on the south side of the building, and the relevant Yachtscoreing event page.

**3. Changes to the Sailing Instructions**

- 3.1 Changes to the SIs will be posted on the Official Notice Board and the relevant Yachtscoreing event page by 0900, changes to the SIs will also be announced approximately two hours prior to the warning signal for the first race of the day by the Race Committee (“RC”) on VHF Radio Channel 72. Any change to the schedule of races will be posted by 2000 on the day before it will take effect except:
  - 3.1.1 Change of race scheduled by adding a second race for Mid-Distance and JAM fleets may be announced via VHF CH72 on that day.
- 3.2 In accordance with RRS 90.2 the RC may alter these SIs by hailing the fleets and making the change on VHF CH72.



**4. Signals Made Ashore**

- 4.1 Signals made ashore will be displayed on the RC Boat at dock at the Blackhawk Boat Yard (located at East Dock Road, Bayfield, WI).
- 4.2 When flag AP is displayed ashore, '1 minute' is replaced with 'not less than 1 hour' in the Race Signal AP. This changes RRS Race Signal AP.

**5. Schedule of Races.**

- 5.1 Registration for all fleets will be Sunday July 2, 2017 from 1600-1800 at the Pavilion.
- 5.2 Skippers meeting for all fleets will be held Monday July 3, 2017 at 0800 at the Pavilion. Attendance by a representative of each boat is mandatory.
- 5.3 Dates of racing

| Fleet                            | Race Dates       | Number of Races per day |
|----------------------------------|------------------|-------------------------|
| Buoy, Sport Boat, and Multi Hull | July 3 – 7, 2017 | Up to 3 races           |
| MD and JAM                       | July 3 – 7, 2017 | Up to 2 races           |

- 5.4 The scheduled time of the first warning signal for the first race each day will be 1100. Postponement on shore may be announced via VHF CH72 at 0900 each day.
- 5.5 The WYC/AIS Memorial Cup will be a 1-day pursuit start race for all fleets. This race honors the memory of those who have passed away who have made significant contributions to Bayfield Race Week. This shall be a pursuit race, with each yacht's start time provided at the skippers meeting or during the social the night before the event and on the appropriate Yachtscoring event page.
- 5.6 On the last scheduled day of racing no warning signal will be made after 1430.
- 5.7 Flag A displayed, with no sound, while boats are finishing means "no more racing today".

**6. Class Flags.**

- 6.1 Classes will be defined and posted on the Official notice board prior to the mandatory Skippers Meeting.
- 6.2 Class flags shall be flown from the backstay. Any boats without a backstay shall fix the class flag to the end of their boom.
- 6.3 Class flags for boats will be provided during registration and/or at the mandatory Skippers Meeting.

**7. Racing Areas.**

- 7.1 Racing may be held anywhere in, near or around the Apostle Islands (including without limitation Madeline Island). Addendum B shows the partial area in which racing may be held.

**8. The Courses**

- 8.1 Buoy Fleet Classes - Course diagrams for the Buoy Fleet are included with Addendum A. The specific windward mark that each class shall round will be posted with the course description by the RC.



- 8.2** MD and JAM Fleet Classes - Addendum B shows the approximate location of the marks that might be used to define the course for the MD and JAM fleets.
- 8.3** Sport Boat and Multi-Hull Classes - At the discretion of the RC, the multihull class may sail a windward leeward course as described in SI 8.1 or a Mid Distance course as described in SI 8.2.
- 8.4** Courses will be posted on a display board on the RC boat. They will show the course, the order in which the marks are to be passed, and the side on which each mark is to be passed. The RC will also announce the course on VHF CH 72.
- 8.5** The approximate compass bearing and distance from the starting line to Windward Mark will be displayed from RC Boat.
- 8.6** Memorial Cup: course will use a combination of marks to provide course of the desired distance.

## **9. Marks**

- 9.1** Marks may be:
  - 9.1.1** Temporary buoys (which may be red, orange, white or green and be in the form of spheres or tetrahedrons),
  - 9.1.2** Islands,
  - 9.1.3** Government navigation marks/buoys, and/or
  - 9.1.4** Waypoints as defined by latitude and longitude coordinates, that the course requires a boat to leave on a specified side. Any use of a waypoint shall be in accordance with World Sailing Appendix WP. This appendix changes RRS 18 and RRS 28 and adds a definition of a waypoint.
- 9.2** All boats will obey all government navigation marks/buoys along the rhumb line while racing, except if the navigation mark/buoy is a mark of the course, when such navigation mark/buoy may be rounded pursuant to RC instructions.

## **10. The Start**

- 10.1** The start order will be announced at the skippers meeting.
- 10.2** Races will be started using RRS 26. The warning signal of each succeeding class will be made with the start signal of the preceding class.
- 10.3** The starting line will be between a staff displaying an orange flag on an RC Signal Boat at the starboard end and course side of the port-end starting mark.
- 10.4** Recalls will be signaled as follows:
  - 10.4.1** When signaling an individual recall, RC shall announce via radio the sail number(s) of boat(s) identified as being OCS. Failure or delay to hear or provide announcements will not be grounds for redress. This changes RRS 29.1.
  - 10.4.2** When signaling a General Recall, the recalled class will go to the end of the starting order. This changes RRS 29.2.



## 10.5 Memorial Cup

**10.5.1** The WYC/AIS Memorial Cup will follow a pursuit format where all boats will be classified by their LMPHRF number with the slowest boats starting first and the fastest boats starting last.

**10.5.2** Each yacht's start time provided at the skippers meeting or during the social the night before the event and on the relevant Yachtscore event page.

**10.5.3** Starting area, course and finish line location to be announced at 0900 via VHF CH72 on the day of the race.

**10.6** WYC/AIS Memorial Cup starts will be made with RRS 30.1. The I Flag will be displayed as a preparatory signal from four minutes before the first start and taken down one minute before the last start.

**10.7** Any boat using a sail with an alternate sail number will report the proper sail number in writing to the RC, no later than 2 hours prior to the warning signal for the first race of the day, or by VHF hail to the RC no later than 30-minutes prior to the warning signal for the first race of the day. [DP]

## 11. The Finish

**11.1** Buoy Fleet:

**11.1.1** The Finish will be between a staff displaying an orange flag on a RC Boat and the course side of the mark approximately perpendicular to the RC Boat.

**11.2** MD/JAM Fleet:

**11.2.1** Bayfield Fishing Dock finish line will be used for all MD/JAM Fleets unless an alternative location is announced with the course description.

**11.2.2** When Bayfield Fishing Dock is used as one mark of the finish line, the other end will be the course side of a *mark* approximately 200 feet from the end of the pier, and in a line perpendicular to the dock.

**11.3** Multi-Hull and sport boat classes

**11.3.1** SI 11.1 shall apply when sailing a buoy course as described in SI 8.1.

**11.3.2** SI 11.2 shall apply when sailing a MD *course* as described in SI 8.2.

**11.4** Memorial Cup will be finished at the Bayfield City Dock. When Bayfield City Dock is used as one mark of the finish line, the other end will be a the course side of a mark approximately 300 feet from the end of the pier in a line projected by extending Rittenhouse Avenue through the end of the pier.

**11.5** At the discretion of the RC, a race may be finished at a waypoint. A waypoint is defined by latitude and longitude coordinate. When finishing at a waypoint, the finish line is a line through the waypoint at a 90-degree angle to the last leg and of the shortest practical length. Boats must log their GPS finish time and the sail number of the boat ahead and behind their finish position, if available.

## 12. Penalty System.

**12.1** RRS Appendix V1 is in effect. This changes RRS 44.1.

**12.2** RRS Appendix T – Arbitration will be in effect for this event.



### 13. Time Limits

#### 13.1 Buoy Fleet:

**13.1.1** The time limit for the first boat of a class to finish buoy races will be 3 hours from their start signal. Any boat within the class not finishing a race within 1 hour after the first boat of the class finishes will be scored Time Limit Expired (“TLE”).

#### 13.2 MD/JAM Fleets:

**13.2.1** For all MD/JAM classes the time limit for the first boat to finish will be 4 hours from their *start* signal. Any boat not finishing within 90-minutes after the first boat in their class finishes will be scored TLE.

#### 13.3 Multi-Hull and Sport Boats:

**13.3.1** SI 13.1 shall apply when sailing a buoy course.

**13.3.2** SI 13.2 shall apply when sailing a MD course.

**13.4** Memorial Cup: Any boat not finishing within 90-minutes of the first boat to finish shall be scored TLE.

### 14. Protests and Request for Redress

**14.1** Protest forms will be available at the official notice board.

**14.2** Protests must be delivered to RC PRO or Chief Judge within the protest time limit.

**14.3** For each class, the protest time limit is 90 minutes after the last boat has finished the last race of the day or the RC signals no more racing today, whichever is later.

**14.4** Notices will be posted on the Official Notice Board as soon as reasonably possible of receiving the protest/request for redress to inform competitors of hearings in which they are parties or named as witnesses. Where reasonably possible, hearings will be scheduled for the day the protests were received and in the order the protests were received. In unusual circumstances and with sufficient notice, the Protest Committee (‘PC’) may schedule a hearing for a different day, time or order.

**14.5** Failure to hear radio communication required by the RC by items SI 3.1, SI 3.2, SI 8.4, SI 10.4 and SI 10.5.3, shall not be grounds for redress.

**14.6** Each boat may rely on verbal communications made by RC; RC verbal statements will take precedence over flags and signals.

### 15. Scoring:

**15.1** Corrected time will be determined using the PHRF Time on Distance calculation.

**15.2** A boat that does not finish within the specified time period (SI 13) shall be scored points for the finishing place one more than the number of boats that finished in the time period. These boats will be assigned the scoring abbreviation of TLE – Time Limit Expired. This changes RRS 35, A4 and A5.

**15.3** A boats series score will be the total of her races. There are no throw-outs. This changes RRS A2.

**15.4** The score of each boat’s Memorial Cup finishing position will also be included within their respective class for overall scoring of Bayfield Race Week.

**15.5** One race is required to be completed to constitute a series.



## 16. Safety Regulations.

16.1 Each boat must comply with the following:

16.1.1 Each boat must comply with all U.S. Coast Guard and other applicable governmental laws, rules and regulations.

16.1.2 A boat that retires from a race shall notify the RC as soon as possible. RC will monitor VHF CH 72.

16.1.3 All monohull boats over 22 feet must have a working motor.

16.1.4 All multihull boats must be over 27 feet in length and must have a motor of 8HP or greater.

16.1.5 Each boat must have a functioning VHF marine-grade radio while racing. [DP], [NP].

16.1.6 Each boat must have a functioning GPS receiver capable of displaying a boat's latitude and longitude position while racing. [DP], [NP].

16.1.7 Life Jackets

16.1.7.1 At the Start and Finish of each race, each person on board each boat is required to wear a USCG or ISO approved personal flotation device (PFD). The use of an ISO approved PFD does not negate the USCG requirement that each vessel must have at least one (1) USCG approved Type III or V life jacket for each person on board. Belt pack style PFD's are not allowed.

16.1.7.2 Any boat with two (2) individuals on board, both individuals shall wear a life jacket at all times.

16.2 Abandonment Due to Weather

16.2.1 Races for individual fleets may be abandoned or postponed when the 5-minute mean wind speed exceeds 24 knots or wind gusts exceed 30 knots, as determined by RC Principal Race Officer ('PRO'). If these conditions exist 90 minutes before the scheduled warning signal, signals will be made ashore. If these conditions develop less than 90 minutes prior to the scheduled warning signal start, signals may be made by RC Boat.

16.2.2 Should the 5-minute mean wind speed exceed 20 knots but not 24 knots, RC PRO may change the course for some or all fleets to a Medium Distance course, as determined by the PRO (with input by RC Chair at PRO's discretion).

## 17. Radio Communication

17.1 Except in an emergency, a boat that is racing shall not make voice or data transmissions and shall not receive voice or data communication not available to all boats. This restriction also applies to mobile telephone, tablets, computers, and similar devices. [NP] [DP]

17.2 Boats are reminded of their obligation to maintain a radio watch on VHF Channel 16 to be compliant with USCG regulations.



## **18. Prizes.**

- 18.1** 1st, 2nd & 3rd place trophy prizes will be awarded for each class. Daily prizes may also be awarded. Additional trophy prizes or awards may be awarded at the discretion of the Trophy Chairperson.
- 18.2** 1st to 5th place trophies will be awarded for the Memorial Cup Race; in addition the boat name of the overall winner shall be inscribed on the Memorial Cup Perpetual Trophy.

## **19. Disclaimer of Liability**

- 19.1** Sailing is an activity that has an inherent risk of damage and injury, including without limitation bodily injury, personal injury, permanent disability, and death. Each person (including without limitation owner, skipper, crew, spectators, officials, and others) participates in each race, social event, and/or associated activity(ies) entirely at his/her own risk. See RRS 4, "Decision to Race".
- 19.2** ORGANIZING AUTHORITY, RACE COMMITTEE, PROTEST COMMITTEE, SPONSORS, HOST CLUB AND VENUE (AND EACH OF THEIR RESPECTIVE OFFICERS, DIRECTORS, EMPLOYEES, CONTRACTORS, OFFICIALS, MEMBERS, GUESTS, VOLUNTEERS, REPRESENTATIVES AND ALL OTHER PERSONS IN THEIR CAPACITY OF ASSISTING A RACE, SOCIAL EVENT AND/OR ASSOCIATED ACTIVITIES) (COLLECTIVELY, "RACE ORGANIZERS") WILL NOT BE RESPONSIBLE OR LIABLE FOR ANY ACTION, CLAIM OR SUIT (COLLECTIVELY, "CLAIMS") OR LIABILITY, LOSS, DAMAGE, ACCIDENT OR INJURY WHATSOEVER (INCLUDING BODILY INJURY, PERSONAL INJURY, PERMANENT DISABILITY OR DEATH) (COLLECTIVELY, "DAMAGES") TO ANY PERSON, PROPERTY OR BOAT WHETHER CAUSED BY, ARISING OR RESULTING FROM THEIR ACT, ERROR, OMISSION OR ALLEGED NEGLIGENCE OR MISCONDUCT, WEATHER OR SEA CONDITIONS, HAZARDS OF ANY KIND, DEFECTS OR FAILURE OF BOATS TO BE SEAWORTHY IN HULL, RIGGING OR GEAR, OR ANY ACTS, ERRORS OR OMISSIONS OR ALLEGED NEGLIGENCE OR MISCONDUCT OF RACE ORGANIZERS OR OTHER PARTICIPANTS OR BOATS WHICH MAY OCCUR PRIOR TO, DURING OR ARISING OUT OF OR IN CONNECTION WITH ANY RACE, REGATTA, EVENT, CRUISE, SPECTACLE, SOCIAL EVENT, RACE FACILITIES OR ANY ACTIVITY SCHEDULED, SPONSORED OR AIDED IN WHOLE OR IN PART BY ANY RACE ORGANIZER(S), TO THE FULLEST EXTENT PERMITTED BY LAW.
- 19.3** By participating, each participant (and in the case of children and minors, each participant's parent or guardian) forever waives, discharges and releases any and all CLAIMS whatsoever against Race Organizers for any DAMAGES to any person, property or boat (i) sustained in conjunction with or prior to, during, or after each race, social event and associated activities; or (ii) arising, relating or resulting from use of race facilities or participation in any race, social event or associated activities, to the fullest extent permitted by law.
- 19.4** Participant releases all Race Organizers from any Claim on account of giving assistance, aid, care, advice, rescue, first aid, treatment or services.
- 19.5** Owners and skippers of all participating boats are required to inform all crewmembers of this Disclaimer of Liability and Release as a condition of entry.



## **20. Insurance.**

- 20.1** All boats must maintain Liability Insurance in full force and effect during *racing* which will include a General Liability policy written by a reputable insurance company insuring the owner and any operators against liability for bodily injury in limits of not less than \$300,000 and for property damage of not less than \$100,000. Each boat will present proof of insurance upon OA's request.

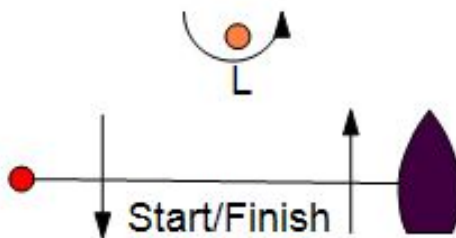
## **21. Publicity and Photographer's Rights.**

- 21.1** As a condition of participation, each participant (on behalf of him/herself and their children and minors) grants Race Organizers (and their designated photographers, videographers, and marketing, communications and public relations personnel) the perpetual, irrevocable right, license and permission to use, publish and distribute the participant's name, photos, video, images and statements of them and their boat and crew in all forms and media worldwide (including without limitation Internet) for any purposes whatsoever (including without limitation press releases, advertising, promotions, sales of pictures, etc.) without compensation, notification or further permission.





## Addendum A – Buoy Course Descriptions



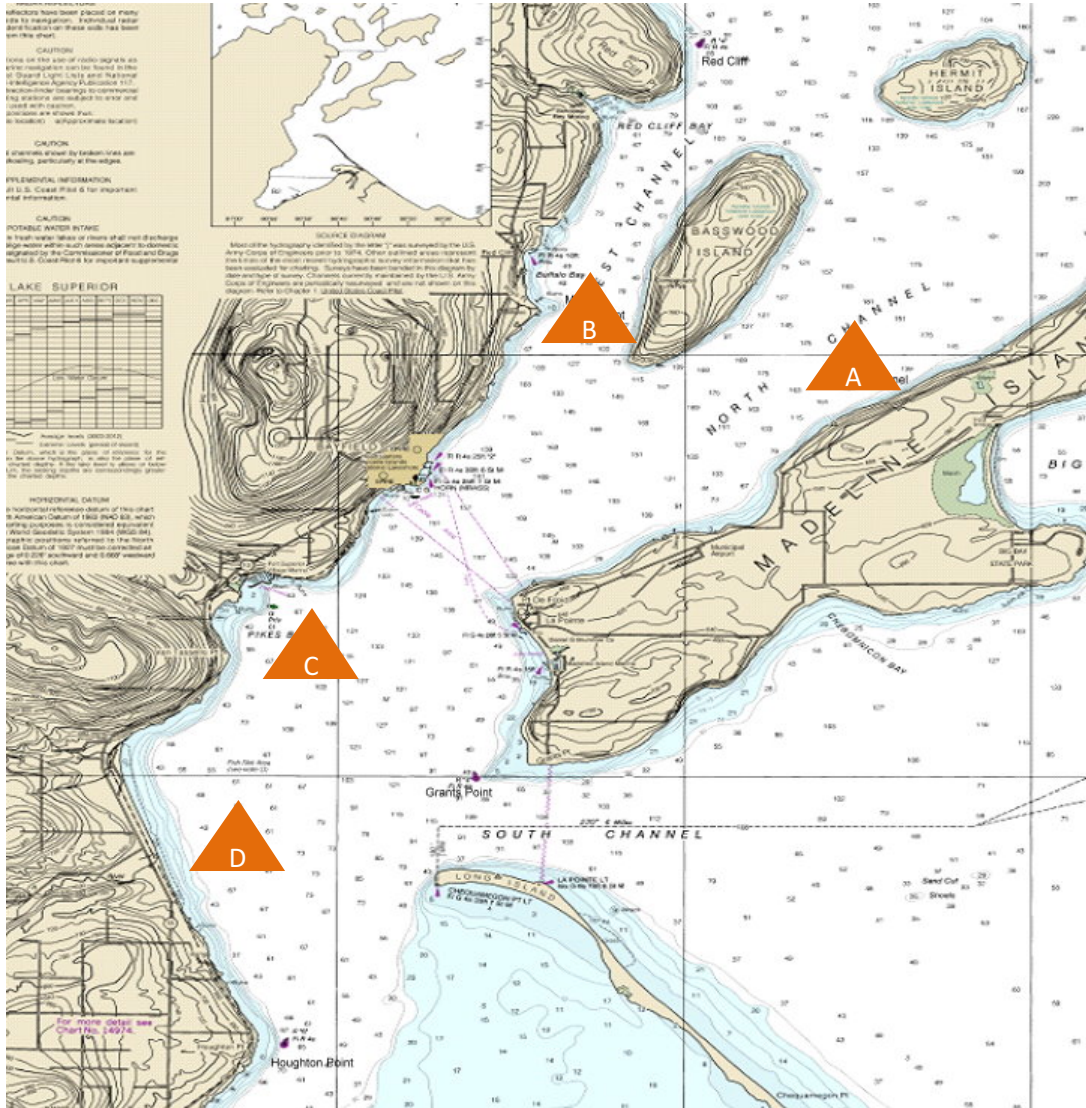
### Course Examples:

- Start – Wa - Finish
- Start – Wa – L – Wa – Finish
- Start – Wa – L – Wa – L – Wa – Finish
- Start – Wb - Finish
- Start – Wb – L – Wb – Finish
- Start – Wb – L – Wb – L – Wb – Finish

Any course listed above may be changed to *finish* at the Bayfield Fishing Dock.



## Addendum B – Partial Racing Area



NOTE: Marks A, B, C & D locations are approximate

- Start, finish or any buoy racing marks
- Moveable, temporary inflatable marks
- Any islands such as Basswood or Hermit
- Fixed navigation marks such as Grants Point, Red Cliff or Houghton Point
- North Channel "A" Inflatable Mark
- Roy's Point "B" Inflatable Mark
- Pikes Bay "C" Inflatable Mark
- Little Sioux River "D" Inflatable Mark