
St. Croix Yacht Club Hospice Regatta

February 20 – 21, 2010

St. Croix Yacht Club

Teague Bay, St. Croix, US Virgin Islands

SAILING INSTRUCTIONS

1 RULES

- 1.1** The regatta will be governed by the rules as defined in *The Racing Rules of Sailing 2009 - 2012*.
- 1.2** The regulations of the Caribbean Sailing Association (CSA), the Virgin Islands Sailing Association (VISA), the IC-24 Class rules, and the CSA Minimum Safety Requirements will apply.
- 1.3** The CSA 2010 Rating Rule applies to all classes except IC-24, Beach Cat, Rhodes 19, 420's, Multihulls, and kiteboards.
US Sailing Portsmouth Yardstick (<http://www.ussailing.org/portsmouth>) shall apply to Beach Cats.
The Multihull Rating Advisory Committee shall determine Multihull handicaps.

2 NOTICES TO COMPETITORS

Notices to competitors will be posted on the official notice board(s) located at **The St. Croix Yacht Club**.

3 CHANGES TO SAILING INSTRUCTIONS

Any change to the sailing instructions will be posted before 0830 on the day it will take effect, except that any change to the schedule of races will be posted by 2000 on the day before it will take effect.

4 COMMUNICATION

- 4.1** Communications on the water between Committees and competitors will take place on VHF channel 06 for those boats racing the Channel Course outside the reef, 08 for the One Design course inside the reef, and 68 for the Kiteboard circle.
- 4.2** Signals made ashore will be displayed on the SCYC flagpole
- 4.3** The Race Committees will attempt to use the VHF radio for announcements of the order of races after the first race of each day and general information. It is strongly suggested competitors have reliable radios with back ups. Failure to make these broadcasts or failure to hear them shall not constitute grounds for granting redress. This changes RRS 62.1.

5 SCHEDULE OF RACES

5.1 Racing is scheduled as follows:

Date

20 February 2010

21 February 2010

There may be as many as five races a day for the boats on the Channel circle and eight for the one design circle. Notice of the last race to be sailed each day will be made via VHF.

5.2 The scheduled time of the warning signal for the first race each day for the channel course and the one design circle is 0955. For the kiteboard circle, the warning signal for the first race each day will be made at 1055.

5.3 The warning signal for each succeeding race will be made as soon as possible after the finish of the last boat in a class or fleet in the preceding race.

5.5 On the last day of the regatta no warning signal will be made after 1400.

6 FLEETS, CLASSES AND CLASS FLAGS

Class flags, to be flown from the backstay or the leech of the after most sail, except for one design, Beachcats and kiteboards, will be:

Class	Flag	Circle
A) Spinnaker Racing	Dark Blue	Channel
B) Performance Cruiser	Yellow	Channel
C) Racer Cruiser	Green	Channel
D) Jib & Main	White	Channel
E) Live Aboard Monohull	Pink	Channel
F) Beachcat	Light Blue	Channel
G) Multihull	Grey	Channel
H) IC 24	Purple	One Design
I) Rhodes 19	Pink	One Design
J) 420	Light Blue	One Design
K) Kiteboard	Kiteboard Class Flag	Kiteboard Circle

7 RACING AREAS

The racing area will be the waters outside of the reef northwest of the St. Croix Yacht Club for all classes except the One Design circle, which will compete inside the reef near the St. Croix Yacht Club, and kiteboards, whose course location will be announced at their 0900 safety meeting at the Yacht Club each morning.

8 THE COURSES

- 8.1** The diagrams in Attachment A show the Channel courses outside the reef. The diagram in Attachment B shows the One Design courses. The diagram in Attachment C shows the Kiteboard courses.
- 8.2** All rounding marks shall be left to port.
- 8.3** The course number will be displayed on a board on the Race Committee Signal Boat, with or before the warning signal for each start.

9 MARKS

- 9.1** Marks for the Channel courses will be orange and yellow tetrahedrons and permanent yellow cylindrical National Park Service (NPS) boundary marks J and K.
- 9.2** Marks for the One Design courses will be orange and yellow tetrahedrons and balls.
- 9.3** Marks for the kiteboard courses will be orange balls.

10 AREAS THAT ARE OBSTRUCTIONS

- 10.1** No passage between Green Cay island and St. Croix.
- 10.2** Competitors are strongly urged to honour Government marks.

11 THE START AND START SEQUENCE

- 11.1** The starting line will be between an orange flag on the RC signal boat and a nearby mark. Any buoy or dinghy attached to the signal boat shall be an extension of the boat.
- 11.2** Boats whose warning signal has not been made shall avoid the starting area. Breach of this sailing instruction may only be protested by the Race Committee or the Protest Committee.
- 11.3** The start sequence for the first start of each day for the boats racing the Channel circle outside the reef will be as follows:
 - 1) Multihull
 - 2) Spinnaker Racing
 - 3) Performance Cruiser
 - 4) Racer Cruiser
 - 5) Jib & Main

The start sequence for the first start of each day for the one design boats racing inside the reef will be as follows:

- 1) IC-24
 - 2) Rhodes 19
 - 3) 420
- 11.4** Subsequent starts will be for individual classes in approximately the order in which the classes complete the previous race.

- 11.5** For the Channel course and Kiteboard circles, races will be started using a five-minute sequence per RRS 26.

For the One Design Circle, races will be started using an automated sound system, with flag signals, per Appendix S of the US Sailing Prescription, as follows:

Attention signal	5 short sound signals
3 minutes	3 long sound signals (Class flag up)
2 minutes	2 long sound signals (Prep flag up)
1 ½ minutes	1 long and 3 short sound signals
1 minute	1 long sound signal (Prep flag down)
30 seconds	3 short sound signals
20 seconds	2 short sound signals
10 seconds	1 short sound signal
5 seconds	1 short sound signal each second until the start
Start	1 long sound signal (Class flag down)

- 11.6** The warning signal for each succeeding start may be made with the starting signal of the preceding class.

12 THE FINISH

The finishing line will be between a blue flag on the RC Signal boat and a nearby mark.

13 PENALTY SYSTEM

For all classes RRS 44.1 and RRS 44.2 are changed so that only one turn, including one tack and one gybe, is required.

14 TIME LIMITS

Boats failing to finish within 20 minutes after the **second** boat sails the course will be scored DNF and awarded points equal to the place of the last finisher plus one. This changes RRS 35 and RRS A4.1.

15 PROTESTS AND REQUESTS FOR REDRESS

- 15.1** For each class, the protest time limit is 60 minutes after the Committee Boat has anchored in the mooring field at St. Croix Yacht Club, which time shall be posted at the Protest Desk.

- 15.2** Hearings will be held at the St. Croix Yacht Club in approximately the order of receipt and as soon as possible.

- 15.3** On the last day of the regatta, a request for reopening a hearing shall be delivered:
- a) within the protest time limit if the party requesting reopening was informed of the decision on the previous day;
 - b) no later than 30 minutes after the party requesting reopening was informed of the decision on that day. This changes rule RRS 66.

- 15.4** When the Protest Committee decides that a boat that is a party to a protest hearing has broken a rule, it shall have discretion in imposing a penalty, except when the rule broken is a rule of Part 2 of the RRS. This changes RRS 64.1(a).

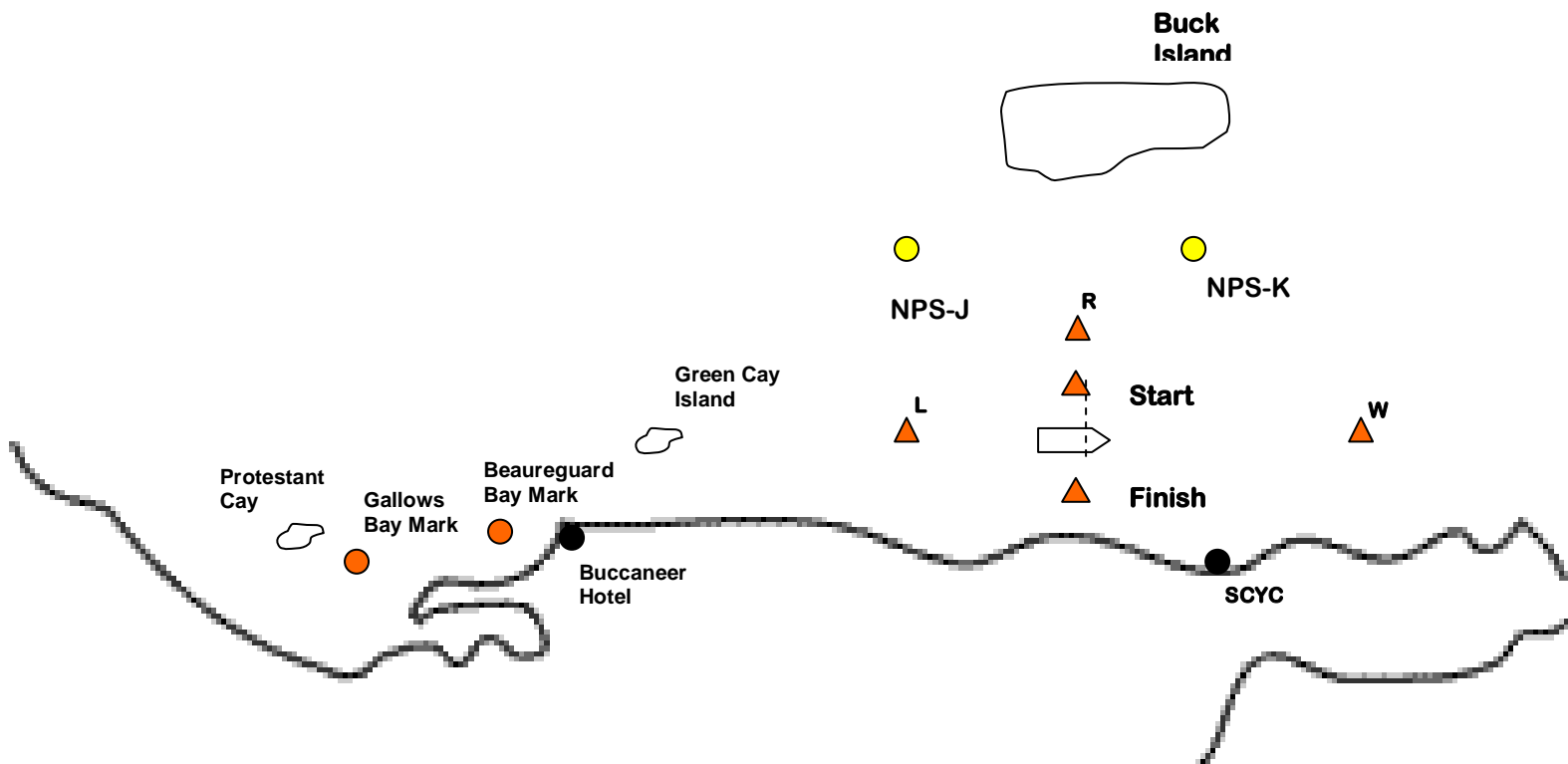
16 SCORING

- 16.1** The Low Point scoring system of Appendix A will apply with modification that no scores may be excluded. This changes RRS A2.

- 16.2** One race is required to be completed to constitute a series.

17 PRIZES

Prizes will be awarded at the St. Croix Yacht Club at 1600 hours on Sunday, 21 February 2010.



BUCK ISLAND CHANNEL COURSES

1. W,L,FINISH
2. W,L,W,L,FINISH
3. W,L,W,L,W,FINISH
4. W,R,LFINISH
5. W,R,L,W,R,L,FINISH
6. NPS K, Green Cay Island to PORT,
Gallows Bay Harbor Mark, Green Cay Island to STARBOARD, FINISH
7. NPS J, Green Cay Island to PORT, Beauregard Bay Mark,
Green Cay Island to STARBOARD, FINISH

NPS-J 17.77817
-64.63797

NPS-K 17.77421
-64.62301

Not drawn to Scale



ATTACHMENT B

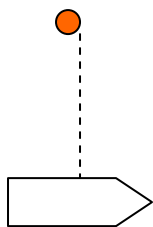
One Design Courses – IC24, Rhodes 19, 420

Course 1

Start, W, O, Finish

Course 2

Start, W, O, L, W, O, Finish



● Offset



Drawing not done to scale



ATTACHMENT C

Kiteboard Courses

W



R



L



Course 1: Start, W, R, Finish

Course 2: Start, W, R, L, W, R, Finish

Drawing not done to scale