



Presented by
Columbia Yacht Club
August 27, 2016

Sailing Instructions

1. RULES

The Organizing Authority for the regatta is Columbia Yacht Club. The regatta will be governed by: (1) the rules as defined by the current Racing Rules of Sailing 2013-2016 (RRS); (2) the Lake Michigan Performance Handicap Racing Fleet (LMPHRF) as modified by the Notice of Race; (3) the rules and regulations of the local Tartan Ten class, (4) the rules and regulations of the Great Lakes Singlehanded Society and (5) these Leukemia Cup Sailing Instructions.

2. NOTICES TO COMPETITORS

Notices to competitors will be posted on the Official Notice Board, located on the port side of railroad deck at the Columbia Yacht Club club-ship.

3. CHANGES IN SAILING INSTRUCTIONS

Any change in the sailing instructions will be posted by 1000 CDT on the day it will take affect.

4. SCHEDULE OF RACES

One race is scheduled. The warning for the Short Handed Division will be signaled at 12:30. The first warning for all other classes will be signaled at 1:00, Saturday August 27, 2016.

5. DIVISION AND CLASS ASSIGNMENTS, FLAGS AND START TIMES

- 5.1. Jib and Main Division class assignments shall be made by Columbia Yacht Club based on assigned handicaps. Handicap and class assignments shall be provided in the skipper package. Starting Times are shown in Table C.
- 5.2. Spinnaker Division Class assignments shall be based on the assigned handicaps. Section Breaks and Starting Times are shown on Table E.
- 5.3. Class flags will be provided in the skipper package and must be attached to the backstay for identification.

6. RACING AREAS

There will be two racing areas. Starting Area A will be for the JIB & MAIN, SHORT HANDED and CRUISING SPINNAKER DIVISIONS, and Starting Area B will be for the SPINNAKER DIVISION. See Illustration A.

- 6.1. The starting line for Starting Area A will be located approximately 0.5 miles northeast of the south end of the outer breakwater at approximately 41:53:00 & 87:35:00
- 6.2. Mark 1 will be an inflatable mark located at approximately 41:53.30 N & 87:32.55 W.
- 6.3. The starting area for Starting Area B will be the center mark (SA7) of Columbia Beer Can circle approximately 2 miles south east of the Adler Planetarium at approximately 41:51.17N & 87:33.41W.

7. THE COURSE

7.1. STARTING AREA A COURSES:

Illustration B shows the course to be sailed, the order in which the marks are to be passed, and the side on which each mark is to be left. The Race Committee will signal the course by displaying the course number on a sign board. The Race Committee may choose different courses for the SHORT HANDED, JIB & MAIN and/or CRUISING SPINNAKER DIVISIONS. If this is the case, the new course shall be displayed at the warning signal for that class.

- 7.1.a. Course 1 shall be from the Start/Finiah line, round the Four Mile Crib to port, round the William Dever Crib to port, and return to the start-finish line. Course length is 6.7 nautical miles.
- 7.1.b. Course 2 shall be from the Start/Finiah line, round Mark 1 to port, round the William Dever Crib to port, and return to the start-finish line. Course length is 5.3 nautical miles.
- 7.1.c. Course 3 shall be from the Start/Finiah line, round the Four Mile Crib to port, round Mark 1 to port, and return to the start-finish line. Course length is 4.0 nautical miles.
- 7.1.d. Course 4 shall be from the Start/Finiah line, round Mark 1 to port, and return to the start-finish line. Course length is 2.2 nautical miles.

7.2. STARTING AREA B COURSES: The course shall be a trapezoid consisting of four marks to be rounded to port plus the finish. The race committee shall signal the number for the first mark. The remaining marks shall be rounded to port in the order listed below. Course length is 5.37 nautical miles.

Course Name	Order of Marks	Heading to First Mark	Location of First Mark
1	SA7-1-8-6-5-SA7	0	N41°52.26' W 87°33.41'
2	SA7-2-1-7-6-SA7	45	N41°51.94' W 87°32.37'
3	SA7-3-2-8-7-SA7	90	N41°51.17' W 87°31.95'
4	SA7-4-3-1-8-SA7	135	N41°50.40 W87°32.37'
5	SA7-5-4-2-1-SA7	180	N41°50.08' W 87°33.41'
6	SA7-6-5-3-2-SA7	225	N41°50.40' W 87°34.44'
7	SA7-7-6-4-3-SA7	270	N41°51.17' W 87°34.87'
8	SA7-8-7-5-4-SA7	315	N41°51.94' W 87°34.44'

8. RECALLS

- 8.1. Individual recalls will be signaled in accordance with RRS 29.2. The Race Committee will attempt to hail recalled boats by sail number and/or boat name by voice, by load-hailer, or over VHF radio.
- 8.2. In the event of a general recall, the recalled class will restart at the very end of the published starting sequence. The preparatory signal for the restart shall be the starting signal for the last scheduled class or any previous recalled section.
- 8.3. “First Substitute” pennant (General Recall Signal) may be lowered without a sound signal one minute before the next signal. This changes RRS 29.3.
- 8.4. When, RRS 30.1, the “around the ends” or “one minute” rule has been invoked, it remains in affect for all successive restarts for that section.

9. PENALTIES

The Two-Turns penalty (RRS 44.2) is in effect for all classes. This may modify individual class rules.

10. PROTESTS.

- 10.1. A boat intending to protest or seek redress shall notify the Race Committee of the names(s) and sail number(s) of the boat(s) being protested immediately after finishing and shall receive specific acknowledgement. Failure to comply with this instruction shall render the protest invalid. This modifies RRS 61.
- 10.2. Protests must be filed within one half hour of the docking of the Race Committee Signal Boat. This changes RRS 61.3. Protests should be filed at the sign-in desk located on the Rail Deck near the dock entrance.
- 10.3. Protest Mediation. The protest procedure is modified to allow a pre-hearing involving one judge and the parties to the protest. If, within 10 minutes, an agreement can be reached by all parties on a resolution of the protest no hearing will be held. If the participants agree that the protested or protesting boat(s) infringed a rule, then that boat shall be penalized as prescribed by Racing Rule 44.3c except that the infringing boat will accept a 40% scoring penalty. A pre-hearing will not be reopened. These procedures change RRS 60.1(b), 63.1, 63.6 and 66.

11. RADIO COMMUNICATIONS

The Race Committee shall attempt to report visual signals displayed and other pertinent information over VHF Channel 71 for the STARTING AREA A and VHF Channel 78 for STARTING AREA B. This information is provided as a courtesy to competitors and does not in any way alter their responsibility to observe the Race Committee's visual signals which govern the conduct of the race. Errors or omissions involving such courtesy broadcasts shall not be grounds for redress.

12. TIME LIMIT

The time limit for the race shall be 2 ¹/₂ hours after the starting signal for that class.

13. SCORING

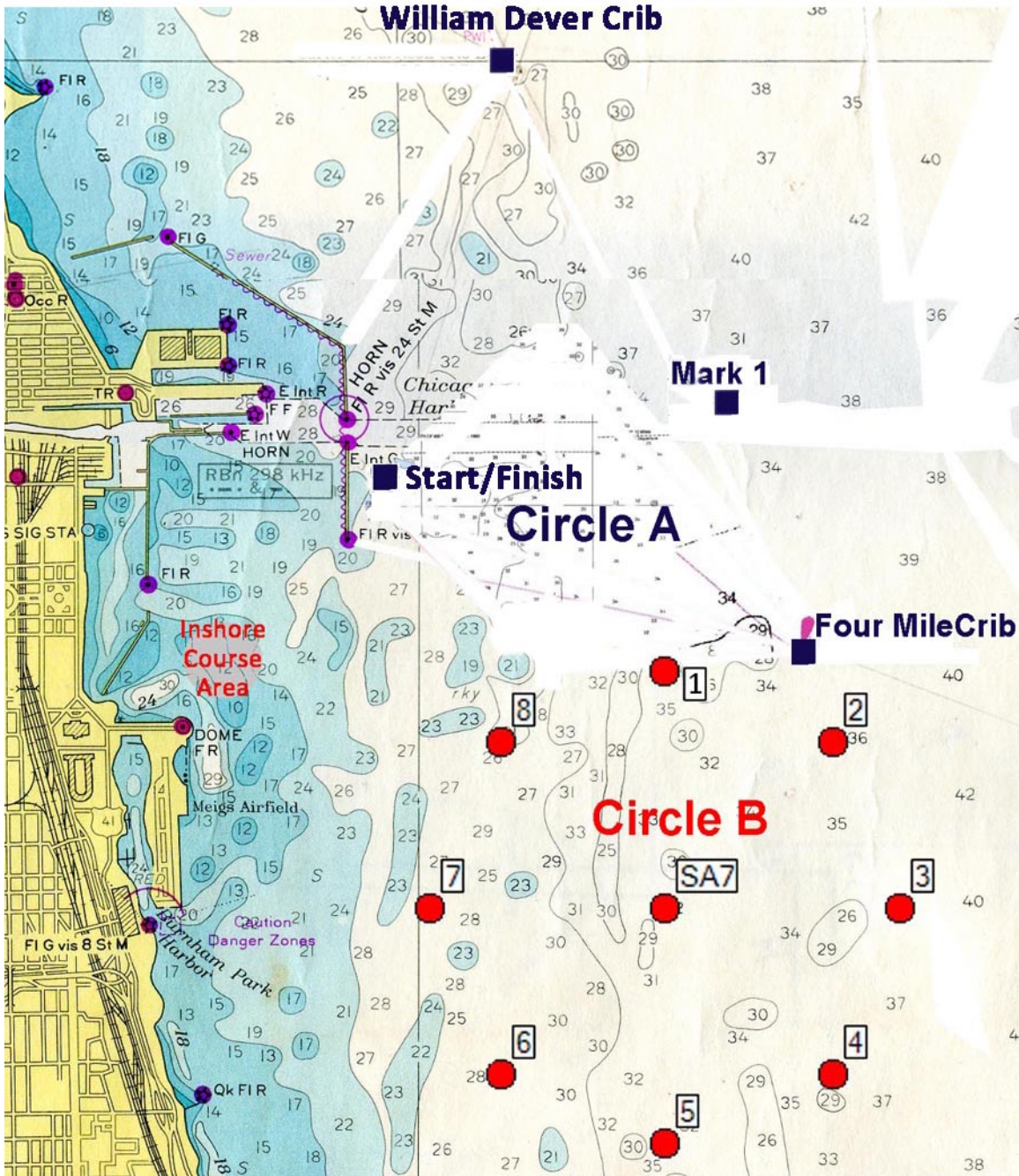
- 13.1. All classes shall be racing under performance handicaps, each boat will be ranked by her corrected time in class.
- 13.2. Ties will be broken by comparing the amount of donations raised by the owner and crew of the tying boats. This changes RRS A7.

14. PRIZES

Prizes will be awarded at the party following the race at the Columbia Yacht Club. Brag flags will be awarded for the first three places in each class with 6 or more starters, and the first two places in each class with 4 more starters.

Illustration A

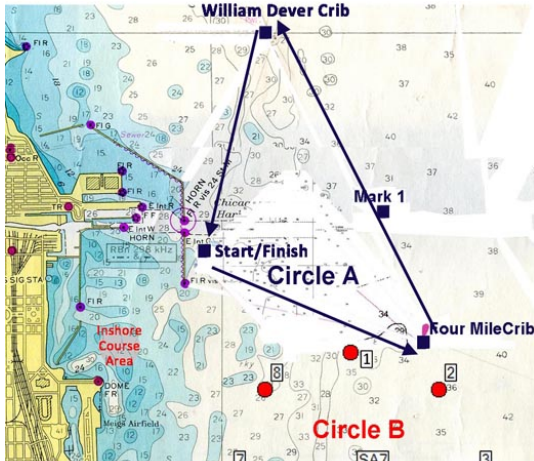
Location of Starting Areas



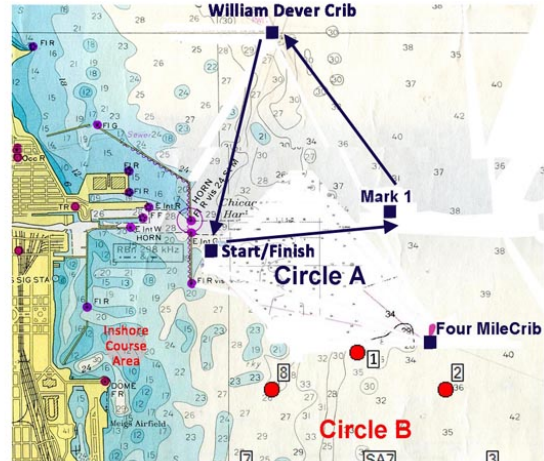
STARTING AREA A

Illustration B - Courses

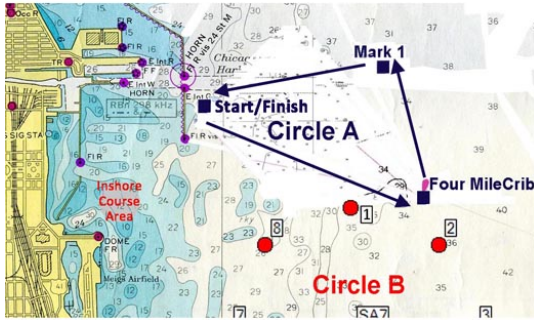
Course 1



Course 2



Course 3



Course 4

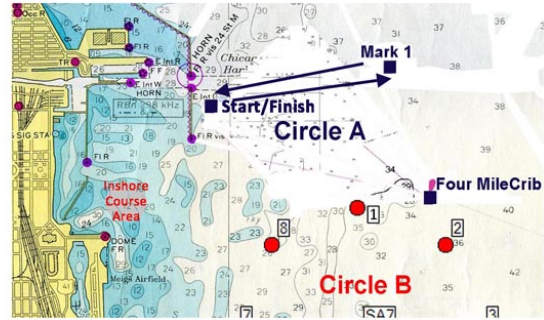


Table C - Class Breaks and Starting Time

	Rating Band	Warning	Start	Ribbon	RC Signal
Short Handed	All	12:30	12:35	None	5 pennant
Classic Yachts	All	1:00	1:05	None	4 pennant
Catalina Owners	All	1:05	1:10	Orange	3 pennant
JAM 2	167 plus	1:10	1:15	Pink	2 pennant
JAM 1	166 and lower	1:15	1:20	Blue	1 pennant
Cruising Spin	All	1:20	1:25	Green	0 pennant

STARTING AREA B

Illustration D – Example of Course 1

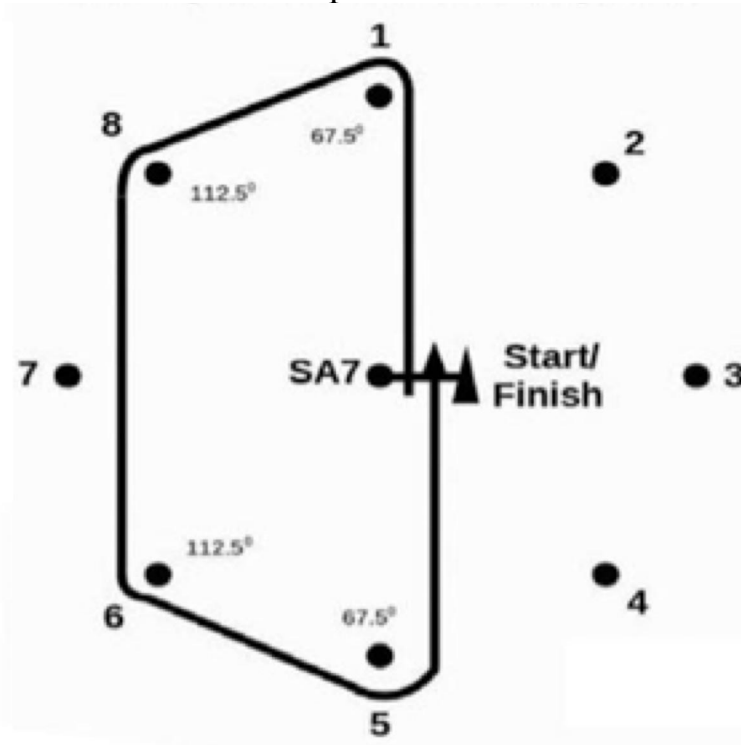


Table E - Class Breaks and Starting Time

	Rating Band	Warning	Start	Ribbon	RC Signal
T-10	T-10	1:00	1:05	None	3 pennant
B36.7	First 36.7	1:00	1:05	None	3 pennant
PHRF 2	47 plus	1:05	1:10	Pink	2 pennant
PHRF 1	46 and lower	1:10	1:15	Blue	1 pennant

