



# 24<sup>th</sup> Annual Leukemia Cup

**ORGANIZING AUTHORITY**  
Eastport Yacht Club

Assist by  
Annapolis Yacht Club



## 04 June 2016

# GENERAL SAILING INSTRUCTIONS

## 1 RULES

Racing will be governed by the rules as defined in the current *Racing Rules of Sailing* (RRS).

## 2 NOTICES TO COMPETITORS

Notices to competitors will be posted on the Official Notice Board located on the waterside at Eastport Yacht Club (EYC).

## 3 CHANGES TO THE SAILING INSTRUCTIONS

Any change to the SIs will be posted before 0900 hours on the day of the race, except that any change to the schedule of races will be posted by 2000 hours the day before it will take effect.

## 4 SIGNALS MADE ASHORE

4.1 Signals made ashore will be displayed from the EYC flagpole.

4.2 When flag AP is displayed ashore, "1 minute" is replaced with "not less than 60 minutes." This changes RRS Race Signals.

## 5 SCHEDULE OF RACES

5.1 For the **PHRF SPINNAKER & ONE-DESIGN** classes, refer to Attachment A.

5.2 For the **LEUKEMIA, CRCA CRUISER, CRCA PERFORMANCE CRUISER, PHRF N, & MULTIHULL** classes, refer to Attachment B.

5.3 For the **HARBOR 20** class, refer to Attachment C.

## 6 RACING AREAS

The racing areas will be on the Severn River and the Chesapeake Bay, off Annapolis.

## 7 THE COURSE

Fleet assignments, and race committee and course information is as follows. Refer to Figure 1.

### Fleet A

Race Committee: EYC  
Rendezvous: GC1 (no light)  
VHF Channel 73

### Fleet B

Race Committee: AYC  
Rendezvous: R2 (FI R, 2.5s)  
VHF Channel 72

### Fleet C

Race Committee: AYC  
Rendezvous: Horn Point (FI W, 6.0s)  
VHF Channel 65A

### CLASSES

Leukemia  
CRCA Cruiser  
CRCA Performance Cruiser  
PHRF N  
Multihull  
J/80  
PHRF B / J/30  
Alerion Express 28  
PHRF C / Cal 25

### CLASSES

PHRF A1/A2  
J/35  
J/105  
J/70

### CLASS

Harbor 20

## **8 MARKS**

- 8.1 For the **PHRF SPINNAKER & ONE-DESIGN** classes, refer to Attachment A.
- 8.2 For the **LEUKEMIA, CRCA CRUISER, CRCA PERFORMANCE CRUISER, PHRF N, & MULTIHULL** classes, refer to Attachment B.
- 8.3 For the **HARBOR 20** class, refer to Attachment C.

## **9 THE START**

- 9.1 For the **PHRF SPINNAKER & ONE-DESIGN** classes, refer to Attachment A.
- 9.2 For the **LEUKEMIA, CRCA CRUISER, CRCA PERFORMANCE CRUISER, PHRF N, & MULTIHULL** classes, refer to Attachment B.
- 9.3 For the **HARBOR 20** class, refer to Attachment C.

## **10 THE FINISH**

- 10.1 For the **PHRF SPINNAKER & ONE-DESIGN** classes, refer to Attachment A.
- 10.2 For the **LEUKEMIA, CRCA CRUISER, CRCA PERFORMANCE CRUISER, PHRF N, & MULTIHULL** classes, refer to Attachment B.
- 10.3 For the **HARBOR 20** class, refer to Attachment C.

## **11 TIME LIMIT**

- 11.1 For the **PHRF SPINNAKER & ONE-DESIGN** classes, refer to Attachment A.
- 11.2 For the **LEUKEMIA, CRCA CRUISER, CRCA PERFORMANCE CRUISER, PHRF N, & MULTIHULL** classes, refer to Attachment B.
- 11.3 For the **HARBOR 20** class, refer to Attachment C.

## **12 PENALTY SYSTEM**

For the **ONE-DESIGN, LEUKEMIA, CRCA CRUISER, CRCA PERFORMANCE CRUISER, MULTIHULL**, and **HARBOR 20** classes only, RRS 44.1 is changed so that when a rule of Part 2 is broken outside the zone at a mark, and there is no injury or damage, and no significant advantage is gained, the Two-Turns Penalty is replaced by the One-Turn Penalty. This changes RRS 44.1.

## **13 PROTESTS AND REQUESTS FOR REDRESS**

- 13.1 Competitors intending to file a written protest or request for redress regarding an incident on the water are requested to inform the Race Committee (RC) of their intent upon finishing or at the first reasonable opportunity. This is intended as a courtesy to the Protest Committee and shall not be grounds for protest or for determining validity.
- 13.2 Protests shall be filed at EYC. For each class, the protest time limit is sixty (60) minutes after their RC Signal Boat docks. The time limit for requests for redress based on an incident in the racing area is sixty (60) minutes after their RC Signal Boat docks. Notices of protests by the RC or Protest Committee will be posted on the Official Notice Board at EYC to inform boats under RRS 61.1(b).
- 13.3 Notice(s) of hearing(s) and a schedule of hearing(s) will be posted within thirty (30) minutes after the protest time limit to inform competitors of hearings in which they are parties or named as witnesses. Hearings will be held at EYC's lower deck.

## **14 SCORING**

- 14.1 For the **PHRF SPINNAKER & ONE-DESIGN** classes, refer to Attachment A.
- 14.2 For the **LEUKEMIA, CRCA CRUISER, CRCA PERFORMANCE CRUISER, PHRF N, & MULTIHULL** classes, refer to Attachment B.
- 14.3 For the **HARBOR 20** class, refer to Attachment C.

## **15 SAFETY REGULATIONS**

- 15.1 Boats shall check in with the RC Boat prior to their first start of the day by hail of their sail number (or name if no sail number) until acknowledged by the RC.
- 15.2 All boats shall carry a VHF radio capable of communicating on VHF channels 9, 13, 16 and the appropriate class courtesy channel (identified in Attachments A, B, and C).
- 15.3 A boat that retires from a race, or leaves the racing area between races, shall notify the RC at the first reasonable opportunity.
- 15.4 Penalties for breaking SIs 15.1, 15.2, 15.3, or RRS 55 may be less than disqualification if the Protest Committee so decides.

## **16 RADIO COMMUNICATIONS**

- 16.1 For the **PHRF SPINNAKER & ONE-DESIGN** classes, refer to Attachment A.
- 16.2 For the **LEUKEMIA, CRCA CRUISER, CRCA PERFORMANCE CRUISER, PHRF N, & MULTIHULL** classes, refer to Attachment B.
- 16.3 For the **HARBOR 20** class, refer to Attachment C.

## **17 COMMERCIAL TRAFFIC**

- 17.1 A boat may not exercise right of way, cross in proximity to, or interfere with reasonable transit of the race area by commercial traffic. A boat protested under this rule has the burden of proof that she complied with this rule. Boats shall take evasive action well in advance of any potential situations. The U.S. Coast Guard, ship captains, and bay pilots have been encouraged to report any incident they observe.
- 17.2 Boats may not protest other boats for breaking SI 17.1. This changes RRS 60.1.
- 17.3 The RC or Protest Committee may protest under SI 17.1, based on information received from any source. There is no time limit for protests filed under SI 17.1. This changes RRS 60.2, RRS 60.3, and RRS 61.3.
- 17.4 RRS 42.3 (Propulsion - Exceptions) is changed by adding: "(j) A boat that is without way in a ship channel may use any means of propulsion to clear the channel at the approach of commercial traffic provided that, when becoming clear of the commercial traffic, the boat has not improved her position as a result of this action. A boat claiming this exception shall report the incident in writing to the protest committee within the protest time limit, with all the facts necessary to substantiate the boat's speed and change of position during the incident."
- 17.5 RRS 62.1 (Redress) is changed by adding: "(e) clearing a ship channel in compliance with SI 17.4."

## **18 DISCLAIMER OF LIABILITY**

Competitors participate in Leukemia Cup entirely at their own risk; see RRS 4. The Organizing Authority will accept no liability for material damage, personal injury, or death sustained in conjunction with or prior to, during, or after the event.

## **19 INSURANCE**

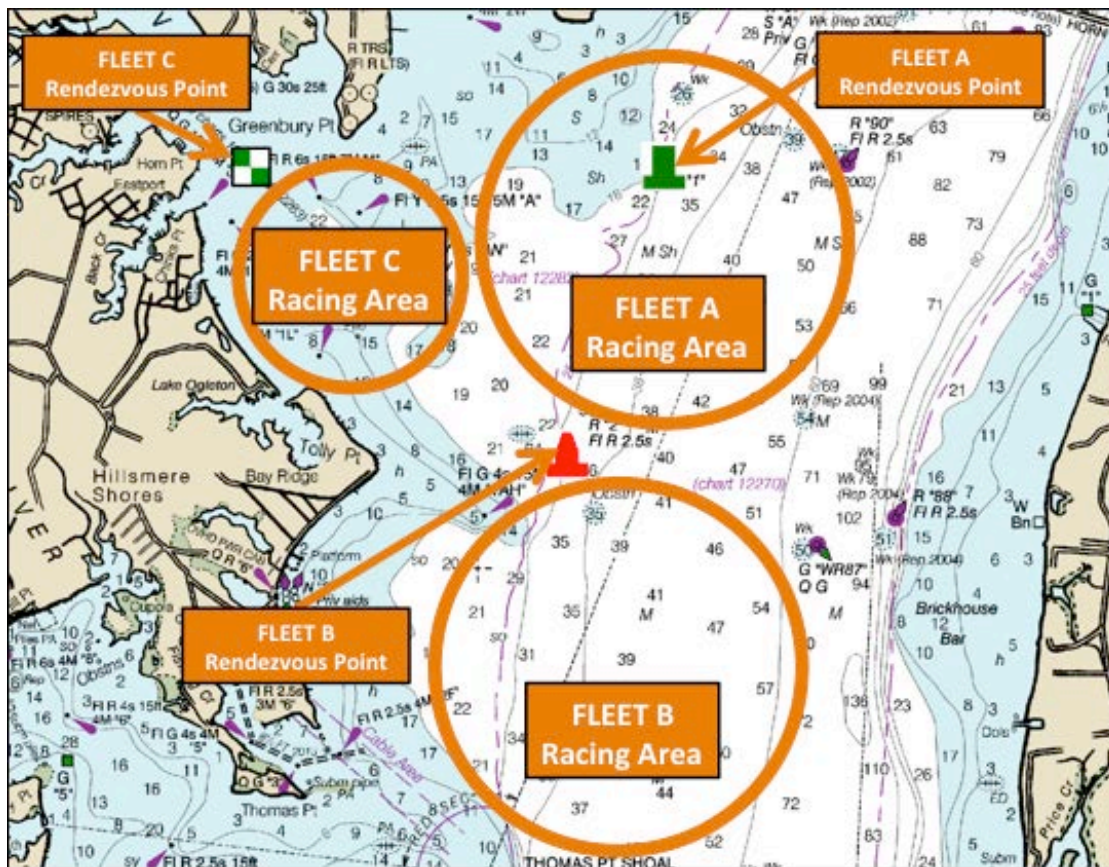
Each participating boat shall be insured with valid third-party liability insurance with a minimum coverage of \$300,000 (US) per incident, or the equivalent.

## **20 PRIZES**

- 20.1 EYC will host the "Rock the Dock" social and prize-giving party following racing. The party is scheduled to begin at 1600 hours.
- 20.2 Prizes in each class will be given as follows:
  - 1<sup>st</sup> and 2<sup>nd</sup> Place for six (6) or more entries;
  - 3<sup>rd</sup> Place for seven (7) or more entries.
- 20.3 The Leukemia and Lymphoma Society will award additional prizes to the top fund raising boat in each class, as well as the overall top three (3) fundraisers for the event.

## **21 ADDITIONAL INFORMATION**

This is a Clean Regatta. All competitors are strongly encouraged to use multi-use water bottles instead of disposable water bottles, and to recycle whenever possible. RRS 55 prohibits placing trash in the water.



**FIGURE 1. Fleets A, B, & C Rendezvous Points & Racing Areas**



# 24<sup>th</sup> Annual Leukemia Cup

ORGANIZING AUTHORITY  
Eastport Yacht Club

Assist by  
Annapolis Yacht Club



04 June 2016

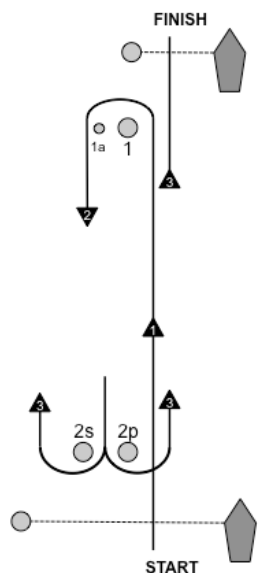
## ATTACHMENT A for the PHRF SPINNAKER & ONE-DESIGN Classes

### 1 SCHEDULE OF RACES

- 1.1 Three (3) races are scheduled for the **PHRF SPINNAKER** and **ONE-DESIGN** classes.
- 1.2 Fleet A competitors shall rendezvous at 1000 hours in the vicinity of GC1 (no light) (CBYRA "A"). Fleet B competitors shall rendezvous at 1000 hours in the vicinity of R2 (FI R, 2.5s) (CBYRA "X").
- 1.3 The Warning Signal for the first race in Fleet A and Fleet B is intended to be made at 1100 hours.
- 1.4 No Warning Signal shall be made after 1500 hours.
- 1.5 All **PHRF SPINNAKER** racers shall display from the backstay their class flag as specified in the CBYRA General SI 4. **ONE-DESIGN** racers are encouraged to display from the backstay their class flag as specified in the CBYRA General SI 4. The J/70 class is not required to display a class flag. Competitors in the Alerion Express 28 class shall display the Alerion class flag from the backstay.

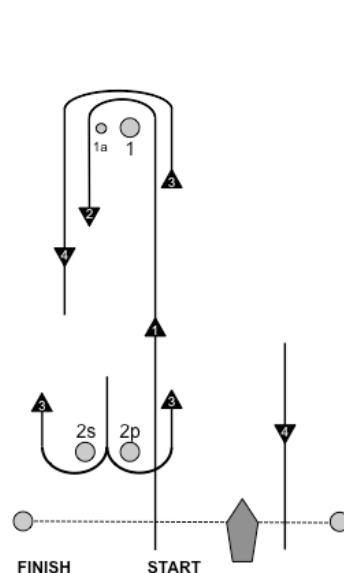
### 2 THE COURSES

- 2.1 The courses will be windward-leeward, as shown in the diagram below (not to scale). Marks shall be rounded and the finish line crossed in the order presented in the description below each course diagram.



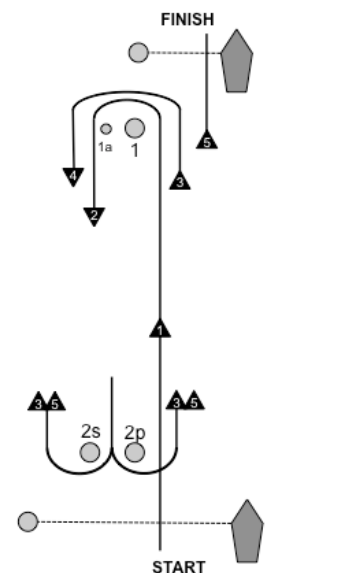
START – 1-1a – 2p/2s – FINISH

COURSE "3"



START – 1-1a – 2p/2s – 1-1a – FINISH

COURSE "4"



START – 1-1a – 2p/2s – 1-1a – 2p/2s – FINISH

COURSE "5"

- 2.2 No later than the Warning Signal, the course to be sailed, the approximate heading, and the distance to the first mark will be designated by placards displayed on the stern or side of the Signal Boat that is opposite the starting line.
- 2.3 Rounding marks shall be passed to port.
- 2.4 RC may set a leeward gate. If a leeward gate is placed, boats shall pass between the two marks.
- 2.5 RC may set a weather offset mark. If used, the weather offset mark shall be passed to port.
- 2.6 For all courses, the leeward mark/gate is not a mark of the course during the first leg of the course. For COURSES “3” and “5,” the weather mark and offset mark are not marks of the course on the last leg of the course. For COURSE “4” the leeward mark or gate is not a mark of the course on the last leg of the course.
- 2.7 When the first mark of the course is to be a change mark, code flag “C” will be displayed by the starting line signal boat before the warning signal, accompanied by a series of repetitive sound signals.

### 3 MARKS

The marks shall be as described below.

	Fleet A	Fleet B
	Race Committee: EYC	Race Committee: AYC
<b>Start Mark</b>	Yellow Tetrahedron	Large Lime Green Cylinder
<b>Weather Mark</b>	Large Orange Cylinder	Large Orange Cylinder
<b>Weather Mark Offset</b>	Small Red Cylinder	Large Lime Green Cylinder
<b>Leeward Mark</b>	Large Orange Cylinder	Large Orange Cylinder
<b>Change Mark</b>	Lime Green Tetrahedron	Large Orange Cylinder w/Dark Band
<b>Finish Mark</b>	Yellow Tetrahedron	Large Lime Green Cylinder
	<b>NOTE:</b> All marks display “EYC” lettering.	<b>NOTE:</b> Orange cylinders display “AYC” lettering.

### 4 THE START

- 4.1 The starting line will be between a staff displaying an orange flag on the starboard end Race Committee (RC) Signal Boat, and the course side of the port end starting mark.
- 4.2 The class flags and intended start order for the first race shall be as defined immediately below. Subsequent starts may be in a different order so as to maximize racing for all classes.

Fleet A		Fleet B	
Race Committee: EYC		Race Committee: AYC	
CLASS	FLAG / PENNANT	CLASS	FLAG / PENNANT
J/80	“J”	PHRF A1 PHRF A2 J/35	“9” “2” “K”
PHRF B J/30	“6” “D”	J/105	“V”
Alerion Express 28	“Alerion”	J/70	“J/70”
PHRF C Cal 25	“7” “T”		

For Fleet A only, the Leukemia, CRCA Cruiser, CRCA Performance Cruiser, PHRF N, and Multihull classes will be started before the first race of the **PHRF SPINNAKER** and **ONE-DESIGN** classes.

### 5 CHANGE OF COURSE

To change the next leg of the course, the race committee will lay a new mark (or move the finishing line) and remove the original mark as soon as practicable. When in a subsequent change a new mark is replaced, it will be replaced by an original mark.

### 6 THE FINISH

The finish line shall be between the staff or halyard on the RC Signal Boat displaying a blue flag and the course side of the finishing mark.

### 7 TIME LIMIT

RRS 35 (Time Limit) is replaced by: “If no boats in her class have finished within two (2) hours, the race shall be abandoned. Boats still racing twenty (20) minutes after the first boat in her class finishes, and not subsequently retiring, being penalized or given redress, will be scored TLE (Time Limit Expired, see Scoring) and should proceed to the starting area if another race is scheduled.”

## **8 SCORING**

- 8.1 RRS Appendix A4, Low Point System, will apply.
- 8.2 One (1) scored race is required to constitute a series.
- 8.3 A boat's series score will be the total of her race scores. This changes RRS A2.
- 8.4 Boats to be scored TLE and not thereafter retiring, being penalized or given redress will be scored points equal to the number of boats finishing within the time limit plus two (2) points by the race committee without a hearing. This changes RRS A4.2 and A5.

## **9 RADIO COMMUNICATIONS**

- 9.1 Fleet A and Fleet B RCs will communicate with competitors on the following VHF channels:
  - Fleet A: VHF channel 73
  - Fleet B: VHF channel 72
- 9.2 Boats are encouraged to make contact with commercial traffic on VHF channel 13, as required for safety.
- 9.3 Failure to hear a broadcast, the RC's failure to broadcast, or the content of any broadcast shall not be grounds for redress.



# 24<sup>th</sup> Annual Leukemia Cup

ORGANIZING AUTHORITY  
Eastport Yacht Club

Assist by  
Annapolis Yacht Club



04 June 2016

## ATTACHMENT B

### For the LEUKEMIA CRUISING, CRCA CRUISER, CRCA PERFORMANCE CRUISER, PHRF N, & MULTIHULL Classes

#### 1 SCHEDULE OF RACES

- 1.1 One (1) race is scheduled for the **LEUKEMIA**, **CRCA CRUISER**, **CRCA PERFORMANCE CRUISER**, **PHRF N**, and **MULTIHULL** classes.
- 1.2 Competitors shall rendezvous at 1000 hours in the vicinity of GC1 (no light) (CBYRA "A").
- 1.3 The Warning Signal for the race is intended to be made at 1100 hours.
- 1.4 No Warning Signal shall be made after 1300 hours.
- 1.5 Racers shall display from the backstay their class flag. The class flags and intended order of start are:
  - PHRF N:** pennant "5"
  - LEUKEMIA:** White & red Leukemia Cup burgee
  - CRCA CRUISER & CRCA PERFORMANCE CRUISER:** White flag
  - MULTIHULL:** code flag "W"

#### 2 THE COURSE

- 2.1 The course will be around a combination of CBYRA Region 3 standard racing marks. The Race Committee (RC) will designate and post the course using placards no later than ten (10) minutes prior to the Warning Signal of each class.
- 2.2 Marks that may be used are identified immediately below. Refer to Figure 2.

LETTER	CHART DESIGNATION	LIGHT	APPROXIMATE LOCATION
A	GC 1	none	N 38° 58.19' / W 076° 24.86'
B	R 90	Fl R, 2.5s	N 38° 58.29' / W 076° 23.33'
C	R 88	Fl R, 2.5s	N 38° 56.13' / W 076° 22.93'
J	G 5	Fl G, 4.0s	N 38° 58.30' / W 076° 27.72'
X	R 2	Fl R, 2.5s	N 38° 56.50' / W 076° 25.56'
V	Special Inflatable Mark	none	≤1.0 nm to windward of start line

- 2.3 Marks shall be rounded in the order displayed on the RC Signal Boat, reading from left to right. Marks designated in "**RED**" shall be rounded to port; marks designated in "**GREEN**" shall be rounded to starboard.
- 2.4 The RC may display a letter "V" to signify that an inflatable orange cylinder mark is set as the first windward mark of the course. The mark shall be rounded per SI 2.3.

#### 3 THE START

The starting line will be between a staff displaying an orange flag on the starboard end RC Signal Boat, and the course side of the port end starting mark. The port end starting mark shall be a lime green tetrahedron.



## 4 THE FINISH

- 4.1 The RC will finish boats at a mark of the course. Competitors should look for a boat displaying an “RC Flag” at each mark of the course. The finish line will be between the staff displaying a blue flag and the course side of the nearby mark.
- 4.2 The RC may shorten the course at any rounding mark in accordance with RRS 32.

## 5 TIME LIMIT

The RC shall abandon the race for a class if no boat in that class sails the course and finishes by 1530 hours. Boats not finished by 1530 shall be scored Time Limit Expired (TLE). This changes RRS 35.

## 6 SCORING

- 6.1 RRS Appendix A4, Low Point System, will apply.
- 6.2 Boats to be scored TLE and not thereafter retiring, being penalized or given redress will be scored points equal to the number of boats finishing within the time limit plus two (2) points by the race committee without a hearing. This changes RRS A4.2 and A5.

## 7 RADIO COMMUNICATIONS

- 7.1 Fleet A RC will communicate with competitors on VHF channel 73.
- 7.2 Boats are encouraged to make contact with commercial traffic on VHF channel 13, as required for safety.
- 7.3 Failure to hear a broadcast, the RC's failure to broadcast, or the content of any broadcast shall not be grounds for redress.

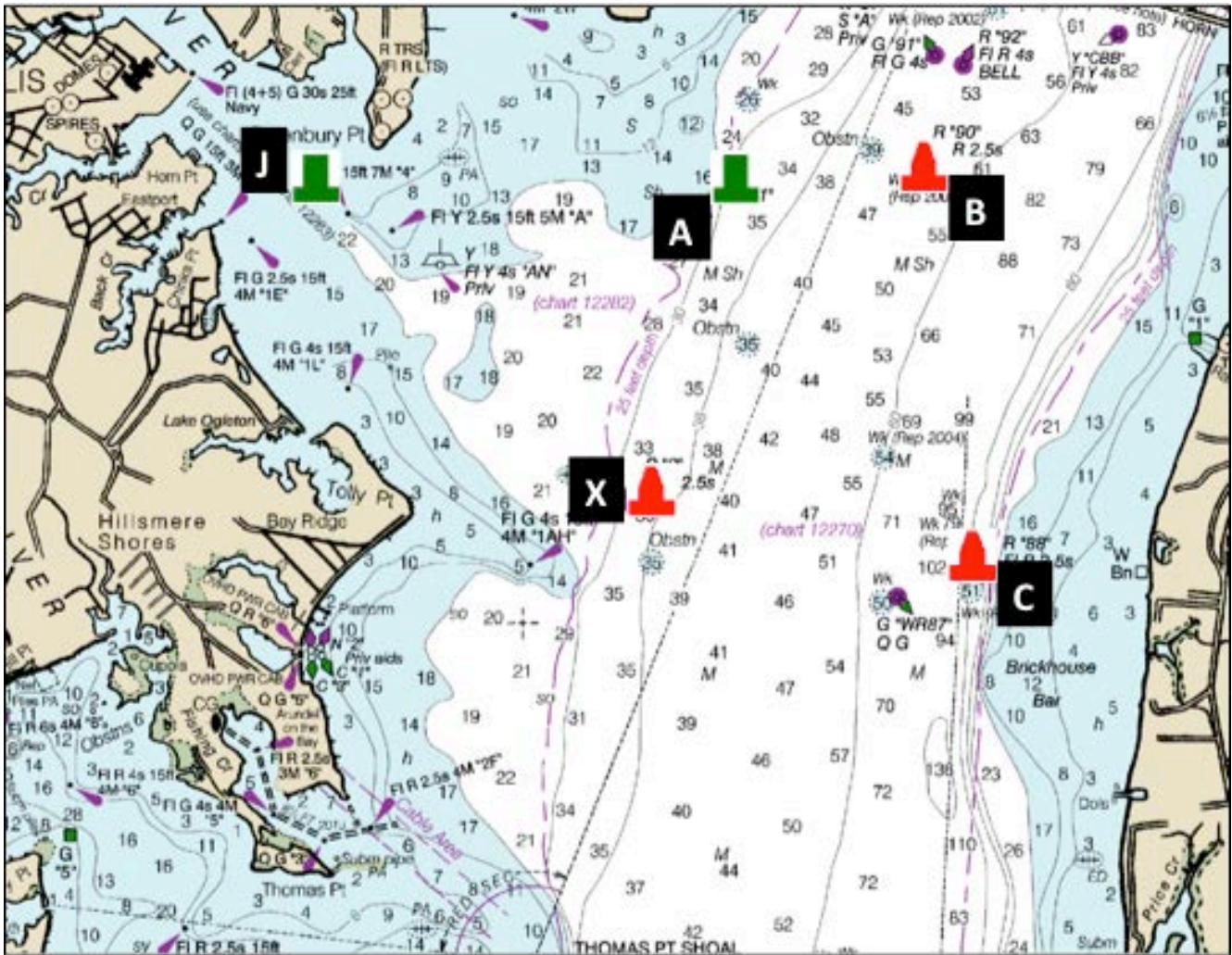


FIGURE 2. Marks for the LEUKEMIA, CRCA CRUISER, CRCA PERFORMANCE CRUISER, PHRF N, & MULTIHULL Classes



# 24<sup>th</sup> Annual Leukemia Cup

ORGANIZING AUTHORITY  
Eastport Yacht Club

Assist by  
Annapolis Yacht Club



04 June 2016

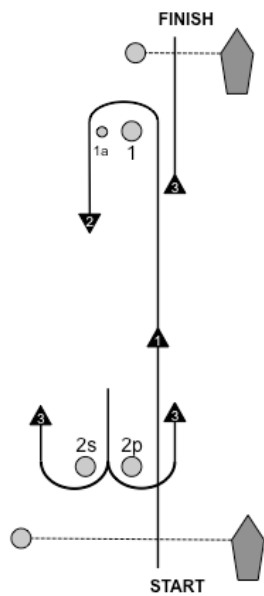
## ATTACHMENT C for the HARBOR 20 Class

### 1 SCHEDULE OF RACES

- 1.1 Three (3) races are scheduled for the **HARBOR 20** class.
- 1.2 Competitors shall rendezvous at 1000 hours in the vicinity of the green and white Horn Point mark (HP, Fl W, 6.0s). The Race Committee (RC) will display code flag "L" and proceed to the starting area.
- 1.3 The Warning Signal for the first race is intended to be made at 1100 hours.
- 1.4 No Warning Signal shall be made after 1500 hours.

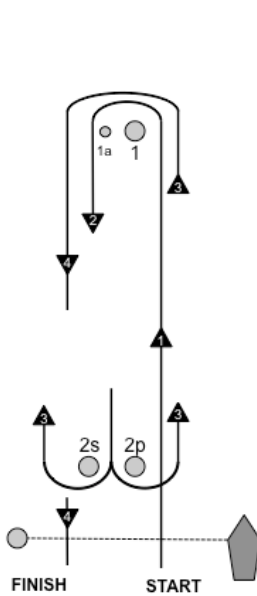
### 2 THE COURSES

- 2.1 The courses, shown below (not to scale) and descriptions are provided below.



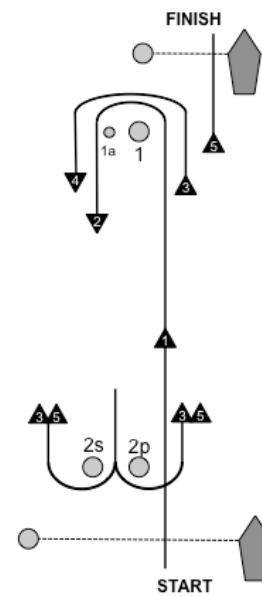
START – 1-1a – 2p/2s – FINISH

**COURSE "3"**



START – 1-1a – 2p/2s – 1-1a – FINISH

**COURSE "4"**



START – 1-1a – 2p/2s – 1-1a – 2p/2s – FINISH

**COURSE "5"**

- 2.2 No later than the Warning Signal, the course to be sailed will be designated on a number board displayed on the stern or side of the Signal Boat that is opposite the starting line.

### 3 MARKS

The marks shall be as described below.

	<b>Harbor 20</b>
	<b>Race Committee: AYC</b>
<b>Start Mark</b>	Large Lime Green Cylinder
<b>Weather Mark</b>	Large Orange Cylinder
<b>Weather Mark Offset</b>	Large Lime Green Cylinder
<b>Leeward Mark</b>	Large Orange Cylinder
<b>Change Mark</b>	Large Orange Cylinder w/Dark Band
<b>Finish Mark</b>	Large Lime Green Cylinder
	<b>NOTE:</b> Orange cylinders display "AYC" lettering.

### 4 THE START

4.1 Starts shall be in accordance with RRS 26.

4.2 The Warning and Start shall be signaled with the Harbor 20 class flag.

4.2 The starting line shall be between the staff or halyard on the RC Signal Boat displaying an orange flag and the course side of the starting mark.

### 5 RECALLS

5.1 Recalls shall be signaled in accordance with RRS 29.

5.2 The RC may attempt to notify boats identified as on the course side by announcing their sail numbers on VHF channel 65A. Failure to transmit or receive such notification will not be grounds for redress. This changes RRS 62.

### 6 THE FINISH

The finish line shall be between the staff or halyard on the RC Signal Boat displaying a blue flag and the course side of the finishing mark.

### 7 TIME LIMIT

7.1 The race shall be abandoned if no boat has rounded the first mark within thirty (30) minutes of the start.

7.2 RRS 35 (Time Limit) is replaced by: "If no boats in her class have finished within one and one half (1.5) hours, the race shall be abandoned. Boats still racing twenty (20) minutes after the first boat in her class finishes, and not subsequently retiring, being penalized or given redress, will be scored TLE (Time Limit Expired, see Scoring) and should proceed to the starting area if another race is scheduled.

### 8 SCORING

8.1 RRS Appendix A4, Low Point System, will apply.

8.2 One (1) scored race is required to constitute a series.

8.3 A boat's series score will be the total of her race scores. This changes RRS A2.

8.4 Boats to be scored TLE and not thereafter retiring, being penalized or given redress will be scored points equal to the number of boats finishing within the time limit plus two (2) points by the race committee without a hearing. This changes RRS A4.2 and A5.

### 9 RADIO COMMUNICATIONS

9.1 Fleet C RC will communicate with competitors on VHF channel 65A.

9.2 Boats are encouraged to make contact with commercial traffic on VHF channel 13, as required for safety.

9.3 Failure to hear a broadcast, the RC's failure to broadcast, or the content of any broadcast shall not be grounds for redress.