



2024 505 and ILCA (Laser) Invitational
August 24th and 25th, 2024
Sunapee, NH
Organizing Authority (OA): Lake Sunapee Yacht Club

SAILING INSTRUCTIONS
POSTED 7/14/24

All times are US Eastern Time. The notation '[DP]' in a rule in the Notice of Race or Sailing Instructions means that the penalty for a breach of that rule may, at the discretion of the protest committee, be less than disqualification and [NP] denotes a rule that shall not be grounds for protests by a boat. This changes rule 60.1(a).

1 RULES

- 1.1 The event is governed by the rules as defined in the current edition of *The Racing Rules of Sailing* (RRS).
- 1.2 RRS Appendix T, Arbitration, and Appendix V (Alternate Penalties) will apply. (A complete list of US Sailing Prescriptions in effect can be found in Notice of Race Addendum A.)
- 1.3 If there is a conflict in languages, the English text will take precedence.

2 CHANGES TO SAILING INSTRUCTIONS

- 2.1 Any change to the Sailing Instructions (SI's) will be posted no later than 90 minutes before the scheduled warning signal for the first race on the day it will take effect, except that any change to the schedule of races will be posted by 2000 on the day before it will take effect.

3 [DP] COMMUNICATIONS WITH COMPETITORS

- 3.1 Notices to competitors will be posted on the official notice board which is online at <https://yachtscoring.com/emenu.cfm?eid=XXXX> and may be posted on the courtesy notice board located at the club front door.
- 3.2 Race officials can be reached by email at Mike Deyett mdeyett@reportingmd.com or by phone at (603) 372 2337
- 3.3 On the water, the Race Committee (RC) intends to monitor and communicate with competitors on VHF radio channel 72. Radios are not required for boats competing but are recommended. Channel 16 maybe used for an emergency.
- 3.4 [DP] While racing, except in an emergency, a boat shall not make voice or data transmissions and shall not receive voice or data communication that is not available to all boats.

4 SIGNALS MADE ASHORE

- 4.1 Signals made ashore will be displayed from the flagpole.
- 4.2 When flag AP is displayed ashore, '1 minute' is replaced with 'not less than 30 minutes' in Race Signals AP.

5 SCHEDULE OF RACES

Friday, June 14	1400 to 1800	Boat Arrival and Wash (Required to wash)
	1500 to 1730	Check-In And Registration Open
Saturday, June 15	0900-1000	Check-In And Registrations Open, Boat Wash
	1000	Skipper & Competitor Meeting
	1130	First Warning Signal, additional races to follow
	1800	Cocktails and Dinner

Sunday, June 16	1100	First Warning Signal, additional races to follow
	1500	No Warning Signal after this time
		Awards ASAP after racing

- 5.1 There are __8__ races scheduled.
- 5.2 There may be 3 to 5 races per day, dependent on weather conditions and best judgement of the RC.

6 CLASS FLAGS

- 6.1 The 505 class flag is the 5o5 class symbol against a white background. The ILCA class flag is the class symbol on a white background. In the event a class flag is not available for the regatta, 505s will use code flag "1" and ILCAs will use code flag "2".

7 RACING AREA

- 7.1 The racing area is shown in SI Exhibit A.

8 COURSES

- 8.1 SI Exhibit B shows the courses, the order in which marks are to be passed, and the side on which each mark is to be left.
- 8.2 No later than the warning signal, the RC signal vessel will display the course and approximate compass bearing of the first leg.

9 MARKS

- 9.1 Marks are shown in the diagram that is Appendix B. The starting mark will be an RC vessel or an orange tetrahedron. The finish mark will be an RC vessel or a yellow cylinder.
- 9.2 Marks 1, 2 and the starting mark will be orange tetrahedrons. Offset-Mark 1a will be an orange ball.
- 9.3 Mark 1S will be a yellow cylinder.
- 9.4 New marks, as provided in sailing instruction 11, will be yellow cylinders. Offset-Mark 1a and/or 1Sa may be omitted from the course if a yellow cylinder is employed as the weather mark.

10 THE START

- 10.1 Races will start in accordance with RRS 26. Lasers and Stars will employ "Line Starts".
- 10.2 505s will use Gate Starts as described in the SI addendum.
- 10.3 The starting line will be a staff displaying an orange flag on the RC signal vessel and a staff displaying an orange flag on a RC pin vessel or the course side of the starting mark. 505s will use the pin end of the starting line for their start.
- 10.4 If any part of a boat's hull is on the course side of the starting line at her starting signal and she is identified, the RC will attempt to hail her sail number. Boats may not base a request for redress on the failure to hail her number, failure of her to hear such a hail, or the order in which boats are hailed. This changes RRS 62.1(a).
- 10.5 A boat that does not start within 5 minutes after her starting signal will be scored Did Not Start without a hearing. This changes RRS A5.1 and A5.2.

11 CHANGE OF THE NEXT LEG OF THE COURSE

- 11.1 To change the next leg of the course, the RC will lay a new mark (or move the finishing line) and remove the original mark as soon as practicable. New marks set after a CHANGE OF COURSE (either direction or length) will be a yellow cylinder. When in a subsequent change a new mark is replaced, it will be replaced by an original mark. The RC reserves the right to make small (<8 degree) course changes without initiating a Change of Course, this while no boats are on the leg of the course heading towards that mark.

12 THE FINISH

- 12.1 The finish line will be a staff displaying an orange flag on a RC vessel and a staff displaying a blue flag on a RC pin vessel or the course side of the finishing mark, a yellow cylinder.

13 PENALTY SYSTEM

- 13.1 The protest committee may impose penalties less than disqualification, for a violation of the class rules and racing rules other than those of RRS Part 1 and Part 2.
- 13.2 Rules A4 and A5 will be changed to state that a boat starting later than 5 minutes after her starting signal will be scored a Did Not Start.

14 TIME LIMITS [AND TARGET TIMES]

- 14.1 The time limit for a race will be 75 minutes.
- 14.2 The finishing window (the time for boats to finish after the first boat sails the course and finishes) will be 15 minutes. Boats failing to finish within the finishing window, and not subsequently retiring, penalized, or given redress, will be scored Time Limit Expired (TLE) without a hearing. A boat scored TLE shall be scored points for the finishing place two more than the points scored by the last boat that finished within the finishing window, but no worse than points for DNF. This changes RRS A5.1, A5.2, and A10.

15 HEARING REQUESTS

- 15.1 The protest time limit is 60 minutes after the RC signal vessel docks. The time will be posted on the official notice board.
- 15.2 Hearing request, scoring inquiry, and penalty acceptance forms are available at the race office, and on the official notice board (see "General Race Forms") https://yachtscoring.com/race_forms.cfm. When the RC receives a scoring inquiry form, it will review its records and respond as soon as practicable. Hearing request forms are available at https://yachtscoring.com/race_forms.cfm.
- 15.3 Notices will be posted no later than 30 minutes after the protest time limit to inform competitors of location and schedule of hearings in which they are parties or named as witnesses.
- 15.4 The RC will post a list of RC scoring actions no later than the protest time limit.

16 SCORING

- 16.1 One (1) race is required to be completed to constitute a series.
- 16.2 When four (4) or fewer races have been completed, a boat's series score will be the total of her race scores. When five (5) or more races have been completed, a boat's series score will be the total of her race scores excluding her worst score.

17 [DP] SAFETY REGULATIONS

- 17.1 A boat that retires from a race shall attempt to notify the RC at the first reasonable opportunity. Notifying a mark or safety boat meets this requirement.

18 [DP] REPLACEMENT OF CREW OR EQUIPMENT

- 18.1 Substitution of competitors is not allowed without prior written approval of the race committee.
- 18.2 Substitution of damaged or lost equipment is not allowed unless authorized in writing by the race committee. Requests for substitution shall be made to the committee at the first reasonable opportunity, which may be after the race.

19 [DP][NP] EQUIPMENT AND MEASUREMENT INSPECTION

- 19.1 A boat or equipment may be inspected at any time for compliance with the class rules, notice of race and sailing instructions.
- 19.2 [DP] When instructed by a race official on the water, a boat shall proceed to a designated area for inspection.

20 [DP][NP] SUPPORT PERSON VESSELS

- 20.1 Support person vessels shall register with the race office. All support person vessels will be required to comply with local law and event support regulations.
- 20.2 On race days, support vessels may not communicate any information to competitor boats that could affect performance or racing, from the moment the team leaves the dock or mooring until the end of racing for the day.

See Class rule 10.5.

- 20.3 Support vessels may not provide provisions or equipment to competitors without express permission from the RC.
- 20.4 Support vessels shall carry a VHF radio, monitor RC communications, and, if called upon, be available for safety assistance.
- 20.5 Team leaders, coaches and other support persons shall stay outside areas where boats are racing from the time of the preparatory signal for the first start until all boats have finished or retired or the RC signals a postponement, general recall, or abandonment.
- 20.6 Per Section 503 US Coast Guard Authorization Act, kill cords/ECOS links must be worn, as required by federal law.

21 TRASH DISPOSAL

- 21.1 Trash may be placed aboard official or support person vessels and shall not be dropped in the lake

22 [DP] BERTHING

- 22.1 Between race days, boats may be hauled out or they may be kept overnight on the dinghy ramp/dock adjacent to the club.

23 PRIZES

- 23.1 Prizes will be awarded in accordance with the Notice of Race. Additional prizes may be awarded at the discretion of the OA.

24 RISK STATEMENT

- 24.1 RRS 3 states: 'The responsibility for a boat's decision to participate in a race or to continue to race is hers alone.' By participating in this event each competitor agrees and acknowledges that sailing is a potentially dangerous activity with inherent risks. These risks include strong winds and rough seas, sudden changes in weather, failure of equipment, boat handling errors, poor seamanship by other boats, loss of balance on an unstable platform and fatigue resulting in increased risk of injury. Inherent in the sport of sailing is the risk of permanent, catastrophic injury or death by drowning, trauma, hypothermia or other causes.

EXHIBIT A:

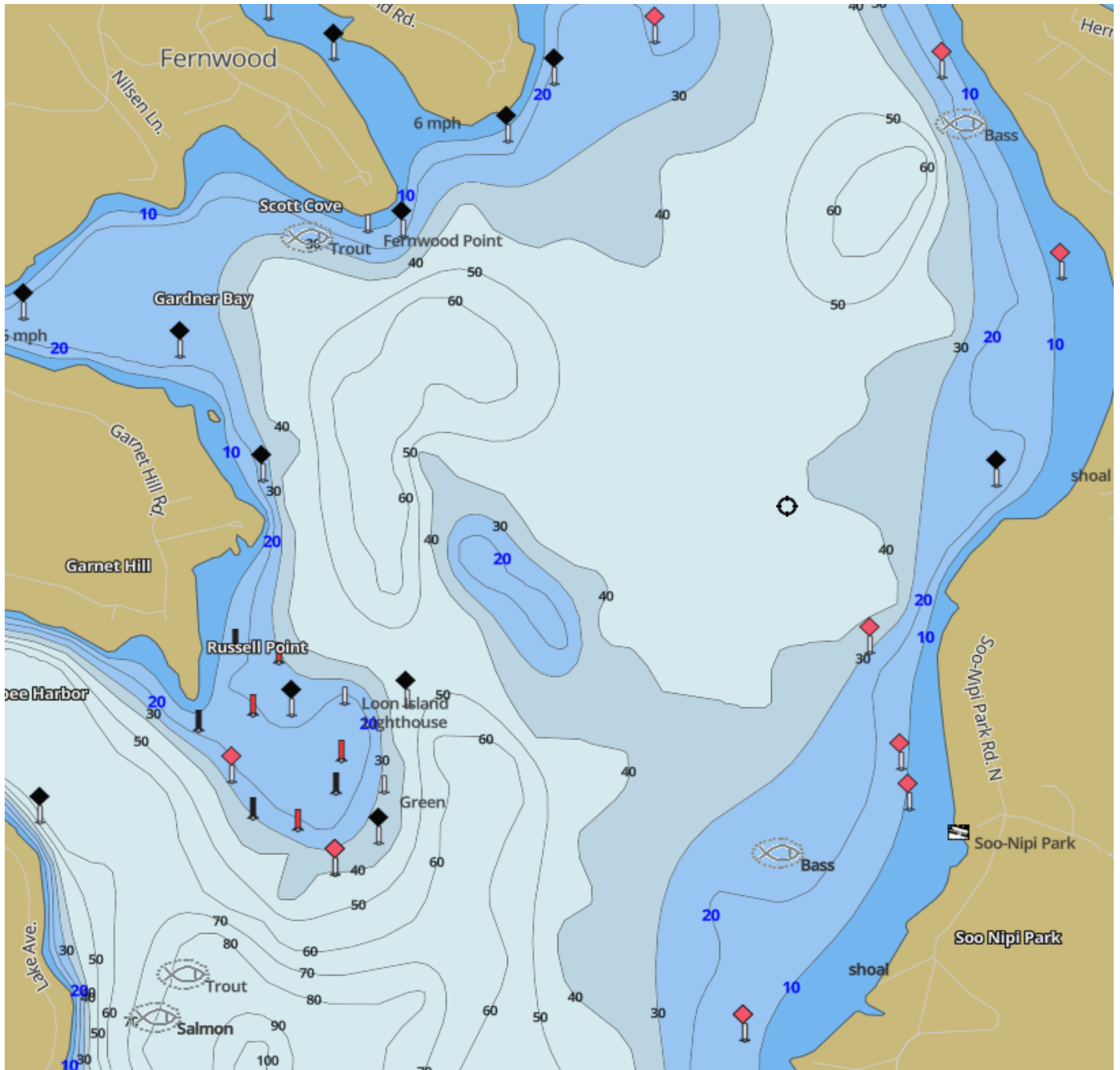
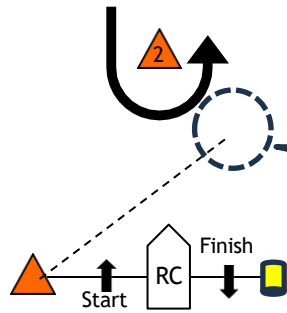
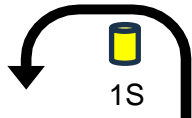
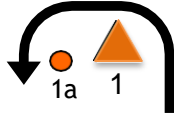


EXHIBIT B:



Course Descriptions:

W1 - Start, 1, 1a, Finish

W2 - Start, 1,1a, 2, 1, 1a, Finish

W3 - Start, 1,1a, 2, 1, 1a, 2, 1, 1a, Finish

WS1 - Start 1S, Finish

WS2 - Start, 1S, 2, 1S, Finish

Approximate location of
505 Gate Start Starboard
Limit Mark