

The logo features a stylized sailboat with a teal and white sail, a dark blue hull, and a large dark blue 'J' and '24' on the sail.

# Downeast Regatta '24

**Sailing Instructions**  
Published 9/4/24



**100 W Commercial St, Portland, ME 04102**

**Hosted by J/24 FLEET 43, SailMaine, Portland Yacht Club**



*Thank you to our Platinum Sponsors, Evergreen Subaru and Sea Bags Maine*



*Thank you to our Silver Sponsors, East Coast Yacht Sales, Mast Landing Brewing Co, & Regatta Custom Merch Solutions*



*Thank you to our Bronze sponsors, Luke's Lobster, Ice Pik Vodka, Pineland Farms, Quantum Sails, KablooeY Boat Parts, AFLOAT, and Pat's Pizza*



**WHEN YOU ARRIVE AT PORTLAND YACHT SERVICES,  
100 W Commercial St, Portland, ME 04102  
PLEASE USE THE FOLLOWING GATE CODE**

**7 0 3 5 #**

Gate instructions: If the gate is closing, wait for the gate to close again before entering the code. Please distribute the code and instructions to your team.

EXITING: IF GATE IS CLOSING PULL UP TO STOP SIGN

## **Sailing Instructions**

### **1. RULES**

- 1.1.** The regatta will be governed by the rules as defined in *The Racing Rules of Sailing*.
- 1.2.** The Regatta Regulations of the International J/24 Class Association (IJCA) will apply.
- 1.3.** If there is a conflict in language, English will take precedence.
- 1.4.** The notation [NP] in the Sailing Instructions means that a boat may not protest another boat for failing to comply with this instruction.
- 1.5.** [NP] Bow numbers will be assigned to each boat and will be used as identification for the boat during the regatta.
- 1.6.** In accordance with RRS G3, a boat chartered or loaned may carry national letters or sail number in contravention of the class rules.
- 1.7.** RRS 41 shall apply to Support Vessels from the time they leave her mooring for the first race of each day until she returns to her mooring after racing. If RC displays Signal AP over H, RRS 41 is suspended until she leaves her mooring again. This changes the preamble to Part 4 of the Rules.
- 1.8.** RRS Appendix V will apply.
- 1.9.** RRS 61.1(a) will be changed so that the red flag displayed by a protesting boat shall have a hoist of not less than 150mm and a fly of not less than 200 mm.
- 1.10.** Class rule C.2.1(b) is changed to Class rule J.4.3 regarding crew. A crew nominated or listed for this event may be different for different days if scheduled in advance at registration. Emergency changes may be made with the written permission of the Race Committee.

**1.11.** Except if the course is shortened to finish at the windward mark, penalties while in the zone of the windward mark or on the offset leg may be delayed and taken as soon as possible on the downwind leg. This is added to RRS 44.

**1.12.** Class Rule C10.2 will be changed to Class Rule J.2 regarding a spare spinnaker.

## **2. NOTICES TO COMPETITORS**

**2.1.** Notices to competitors will be posted on the official notice board located on the outside of Building “G”.

**2.2.** Any questions regarding these sailing instructions shall be submitted in writing to the Race Committee PRO. The questions and any answers will be posted to the official notice board as soon as possible.

## **3. CHANGES TO THE SAILING INSTRUCTIONS**

**3.1.** Any change to the sailing instructions will be posted by 0900 on Saturday, September 9 and by 0800 on Sunday, September 10.

**3.2.** Any changes to the warning signal on Sunday, September 10 will be posted by 2030 the night before.

## **4. SIGNALS MADE ASHORE**

**4.1.** Signals made ashore will be displayed yellow masted crane by the launch.

**4.2.** When AP is displayed ashore, “1 minute” is replaced by “not less than 60 minutes” in the Race Signal AP definition.

## **5. SCHEDULE OF EVENTS**

**5.1.** The maximum number of races, consistent with the weather conditions and time, will be conducted each day as determined by the PRO.

**5.2.**

**Friday, September 6<sup>th</sup>, 2024**

- 1200-1630: Launching at Portland Yacht Services  
100 W Commercial St, Portland, ME 04102
- 1400-1830: Check-in
- 1630: All boats must be launched
- 1700: Fleet 43 Welcome Refreshments

**Saturday, September 7<sup>th</sup>, 2024**

- 0730-0900: Check-in
- 0900: Competitor's meeting
- 0930: Harbor Start
- 1100: First Warning Signal
- 1800: Dinner, Bar, and Live Music at Portland Yacht Services

**Sunday, September 8<sup>th</sup>, 2024**

- 1000: First Warning Signal
- 1500: No Warning after this time
- After Racing: Haul out, Pizza, Beer, Awards

## **6. CLASS FLAGS**

**6.1.** The J/24 Class Flag (Blue insignia on a white field) or Numeral Pennant 1 shall be used in accordance with RRS 26.

## **7. RACE AREA**

**7.1.** Four racing areas may be used for this event. Please see the attached addendum A. Race area may be altered on the water per the PRO's discretion.

## **8. COURSES**

**8.1.** Courses to be sailed will either be as outlined in attachment C:

**8.1.1.** Course 4 (Start - 1 - 1A - 2S/2P 1 -1A - Finish)

**8.1.2.** Course 5 (Start - 1 - 1A - 2S/2P 1 -1A - 2S/2P - Finish)

**8.2.** Marks 1 and 1a shall be rounded to port. Mark 1a is an offset mark placed approximately 6 boat lengths at a right angle and to port of mark 1. The distance between mark 1 and mark 1A does not constitute a leg of the course.

**8.3.** In absence of a gate, round mark 2 to port. Mark 2S/2P may be placed after the starting signal.

**8.4.** The RC shall broadcast and display the course, bearing, and approximate distance before the warning signal. Failure to broadcast or receive this notification shall not constitute grounds for redress. This changes RRS 62.1(a).

**8.5.** The target time for each race is approximately 50-70 minutes. Failure to meet the target time will not be grounds for redress. This changes RRS 62.1(a).

## **9. MARKS**

**9.1.** Marks 1, 2S, and 2P shall be orange inflatable tetrahedrons.

**9.2.** Mark 1A shall be an orange ball.

**9.3.** The starting Pin shall be a yellow inflatable cylinder.

**9.4.** The finishing mark shall be a yellow inflatable cylinder, unless the course is shortened. (See RRS 32.2)

**9.5.** A change in marks, as denoted in SI 11.1, shall be **ORANGE** Tetrahedrons.

## **10. OBSTRUCTIONS**

**10.1.** The following areas are designated as obstructions: NONE

## **11. THE START**

**11.1.** The RC Vessel will display Code Flag LIMA accompanied by one sound as she leaves the dock.

**11.2.** The starting line will be between a staff displaying an orange flag on the RC vessel and the Pin.

**11.3.** A boat starting later than 6 minutes after her starting signal will be scored Did Not Start (DNS) without a hearing. This changes rules A4 and A5.

**11.4.** The RC will broadcast twice the bow numbers of all boats observed to be On the Course Side at the start. It will not alter the list based on a boat's actions subsequent to the start. Failure to broadcast or hear said broadcast shall not be grounds for redress. This changes RRS 62.1(b).

## **12. CHANGES TO THE NEXT LEG OF A COURSE**

**12.1.** To change the next leg of a course, the RC will lay a new mark or move the finish line and remove the original mark as soon as practical. If there is a subsequent change, the change mark shall be replaced by the original mark.

**12.2.** In the event of a change to the weather mark, Mark 1A will not be present.

## **13. THE FINISH**

- 13.1.** The finish line shall be between a staff displaying an orange flag on the finishing vessel and an inflatable mark. This changes RRS 11.1.
- 13.2.** If the RC does not intend to start another race on the same day, it will display Code Flag Second Substitute as boats are finishing. This changes the Racing Rules.

#### **14. PENALTIES**

- 14.1.** Except if the course is shortened to finish at the windward mark, penalties while in the zone of the windward mark or on the offset leg may be delayed and taken as soon as possible on the downwind leg. This changes RRS 44.2
- 14.2.** The first two sentences of rule 44.1 are changed to: "A boat may take a One-Turn Penalty when she may have broken one or more rules of Part 2 or rule 31 in an incident while racing. However, when she may have broken one or more rules of Part 2 while in the zone around a mark other than a starting mark, her penalty shall be a Two-Turns Penalty."

#### **15. PROTESTS**

- 15.1.** Intent to protest must be communicated to the RC prior to the start of the next race.
- 15.2.** Protest forms are available on the official notice board in the end of Building "G"
- 15.3.** The protest time limit is 60 minutes after Code Flag BRAVO is hoisted per SI 4.3. Code Flag BRAVO will be hoisted as soon as practical as boats return to the dock at the discretion of the RC.
- 15.4.** The RC will post the end of the protest time on the official notice board when hoisting BRAVO.
- 15.5.** Notices will be posted no later than 30 minutes after the protest time limit to inform competitors of any hearing in which they are involved in.
- 15.6.** Hearings will be in Building G



- 15.7.** Notices of protests by the race committee will be posted to inform boats under rule 61.1(b).
- 15.8.** On the last day of racing a request for redress based on a PC decision shall be delivered no later than 30 minutes after the decision was posted. This changes rule 62.2.

## **16. SCORING**

- 16.1.** One completed race is required to constitute a series.
- 16.2.** When fewer than 6 races have been completed, a boat's series score will be the total of her race scores. This modifies Appendix A2.
- 16.3.** When 6 or more races have been completed, a boat's series score will be the total of her race scores excluding her worst score.

## **17. SAFETY REGULATIONS**

- 17.1.** A boat that retires from a race or leaves and/or returns to the racing area between races shall notify the RC as soon as possible.
- 17.2.** Before the first warning signal of each day, each boat must sail on starboard tack past the stern of the race committee boat displaying Code Flag LIMA and hail her bow number until acknowledged by the RC repeating her bow number.

## **18. REPLACEMENT OF CREW OR EQUIPMENT**

- 18.1.** Substitution of Competitors or lost or damaged equipment shall not be allowed without receiving written approval by the RC. Requests shall be submitted to the RC at the first reasonable opportunity.
- 18.2.** The number of crew shall not change during the regatta.

## **19. TRASH DISPOSAL**

- 19.1.** Boats shall not put any trash in the water.

## **20. HAUL OUT RESTRICTIONS**

- 20.1.** See NOR 10

## **21. RADIO COMMUNICATION**

- 21.1.** Except in an emergency, a boat that is racing shall not make voice or data transmissions and shall not receive voice or data communication that is not available to all boats.
- 21.2.** The RC will use VHF radio channel **69** to communicate to the fleet. This includes the location of the starting areas, countdown to the start, OCS bow/sail numbers, General Recalls and Postponements. Failure to make these announcements or failure to hear them shall not be grounds for redress. This changes RRS rule 62.1.
- 21.3.** It is strongly encouraged that each boat carries a VHF radio capable of receiving channels 9, 16, 68, 69, and 71.

## **22. PRIZES**

- 22.1.** See NOR 12

## **23. DISCLAIMER OF LIABILITY**

- 23.1.** See NOR 14

## **24.INSURANCE**

**24.1.** See NOR 3.2

## **25.CODE OF CONDUCT**

**25.1.** See NOR 13

## **26.CONTACT**

J24 Fleet 43 Website: <https://j24fleet43.com/>

Downeast Regatta Chair  
Tom Wells  
E: [fleet43maine@gmail.com](mailto:fleet43maine@gmail.com)

- (1) Coded entry/exit gate: 7035#
- (2) Options for car parking
- (3) Launch/haul via crane
- (4) Dock space
  - Good Thurs evening through Tuesday morning
  - a few fishing boats will remain on the far-right side of (4b)
  - Leave space available for RC boats at the bottom of the ramp @ (4b)
- (5) Signals at head of ramp on mast crane
- (6) Trailer parking along back fence
  - on-land boat prep/de-rig here
  - Transport boat to/from (3) when ready
- (7) Main Building (G)
  - Enter/exit at star ☆
  - Bathrooms & festivities here
- (8) Lobster Bake Set Up



U.S. Coast Guard Light Lists and National Oceanic and Atmospheric Administration (NOAA) Hydrographic Survey Data are used in the compilation of this chart. The U.S. Coast Guard Light List is published annually. The NOAA Hydrographic Survey Data is published periodically. The U.S. Coast Guard Light List and NOAA Hydrographic Survey Data are used in the compilation of this chart. The U.S. Coast Guard Light List is published annually. The NOAA Hydrographic Survey Data is published periodically.

**SUPPLEMENTAL INFORMATION**  
Contact U.S. Coast Guard for important supplemental information.

**NOTE**  
The position of the land may vary slightly from the actual position. The U.S. Coast Guard Light List and NOAA Hydrographic Survey Data are used in the compilation of this chart. The U.S. Coast Guard Light List is published annually. The NOAA Hydrographic Survey Data is published periodically.

**POLLUTION REPORTS**  
Report all spills of oil and hazardous substances to the National Response Center at 1-800-424-6747. For information on the U.S. Coast Guard's oil spill response program, contact the U.S. Coast Guard at 1-800-424-6747.

**SOURCE DIAGRAM**  
The actual areas represent the limits of the most recent hydrographic survey. The actual areas represent the limits of the most recent hydrographic survey. The actual areas represent the limits of the most recent hydrographic survey.

DATE	SOURCE	COVERAGE
1981-2000	NOA Surveys	Full bottom coverage
1981-2000	NOA Surveys	Partial bottom coverage
1981-1980	NOA Surveys	Partial bottom coverage
1981-1980	NOA Surveys	Partial bottom coverage



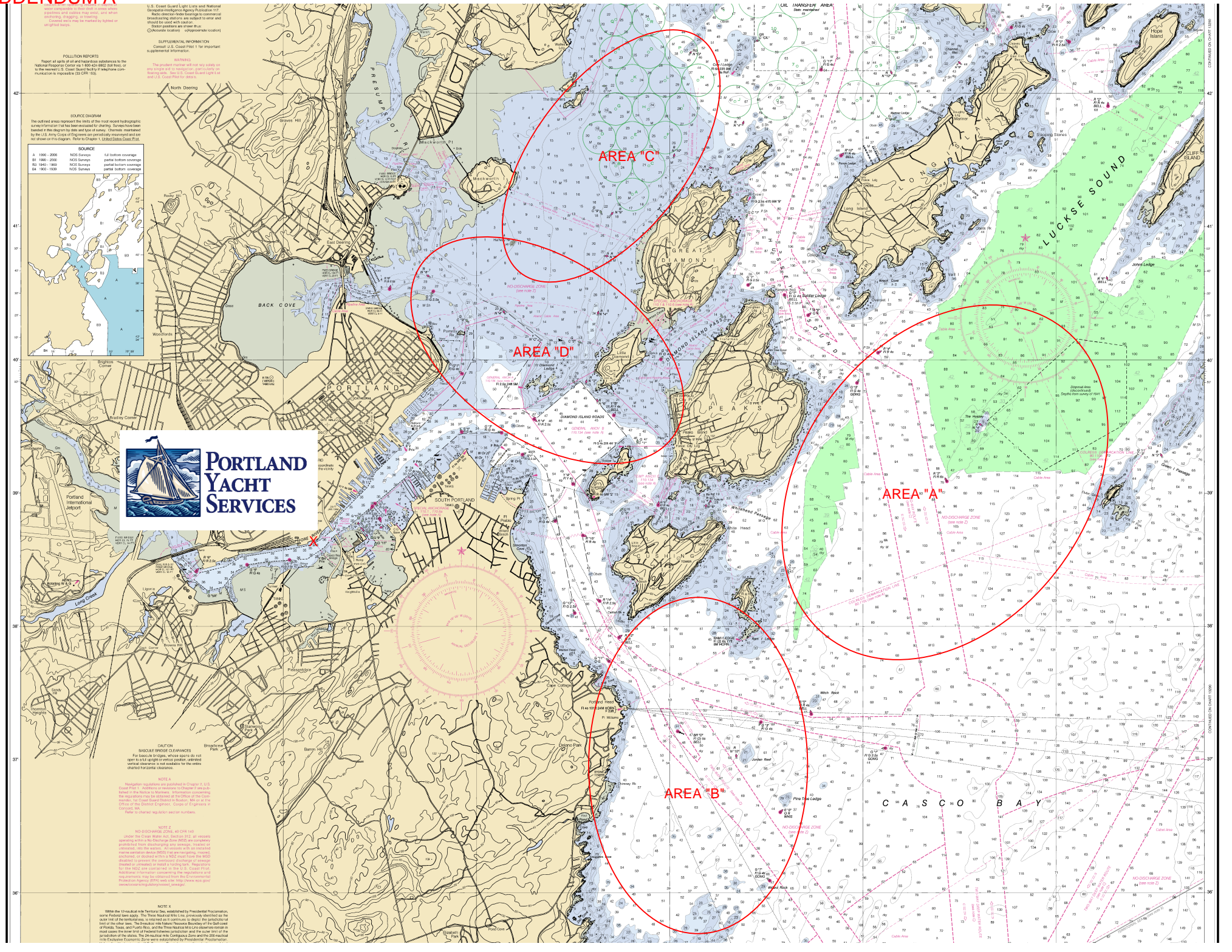
**PORTLAND  
YACHT  
SERVICES**

**CAUTION**  
NO-DISCHARGE ZONE  
For further information, please refer to the chart. The U.S. Coast Guard Light List and NOAA Hydrographic Survey Data are used in the compilation of this chart. The U.S. Coast Guard Light List is published annually. The NOAA Hydrographic Survey Data is published periodically.

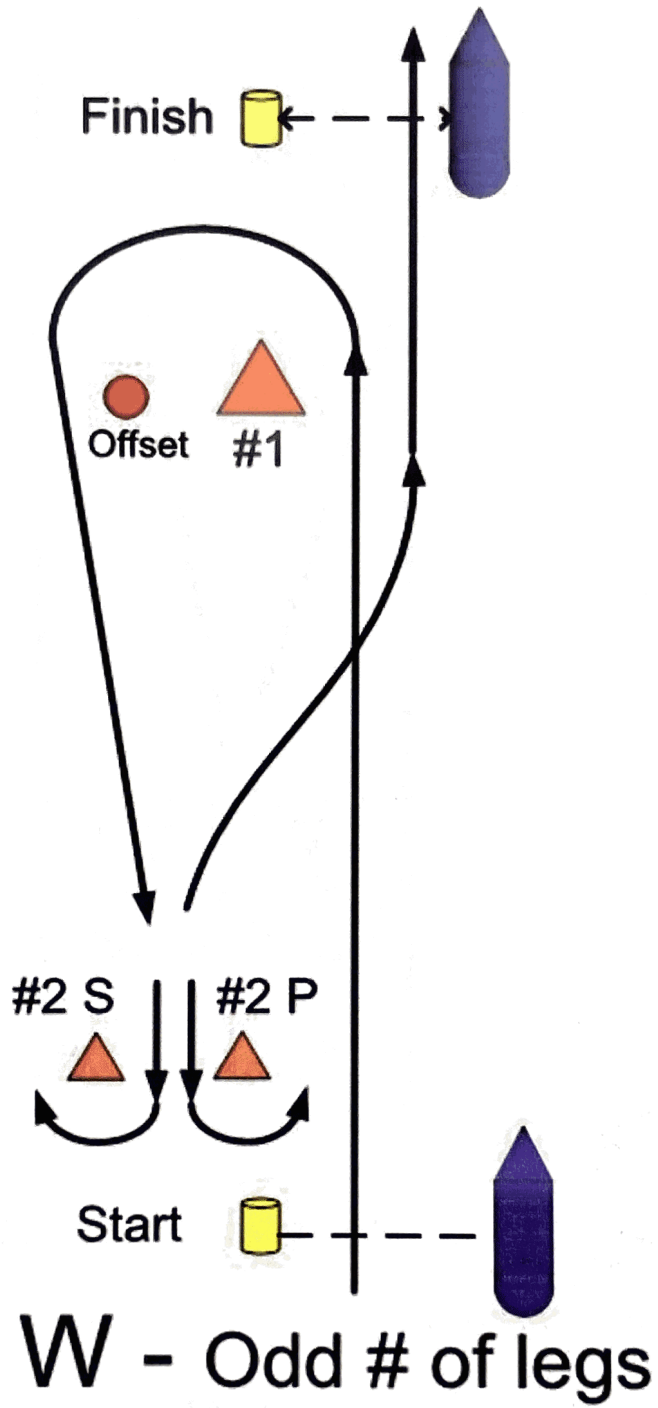
**NOTE**  
NO-DISCHARGE ZONE  
For further information, please refer to the chart. The U.S. Coast Guard Light List and NOAA Hydrographic Survey Data are used in the compilation of this chart. The U.S. Coast Guard Light List is published annually. The NOAA Hydrographic Survey Data is published periodically.

**NOTE**  
NO-DISCHARGE ZONE  
For further information, please refer to the chart. The U.S. Coast Guard Light List and NOAA Hydrographic Survey Data are used in the compilation of this chart. The U.S. Coast Guard Light List is published annually. The NOAA Hydrographic Survey Data is published periodically.

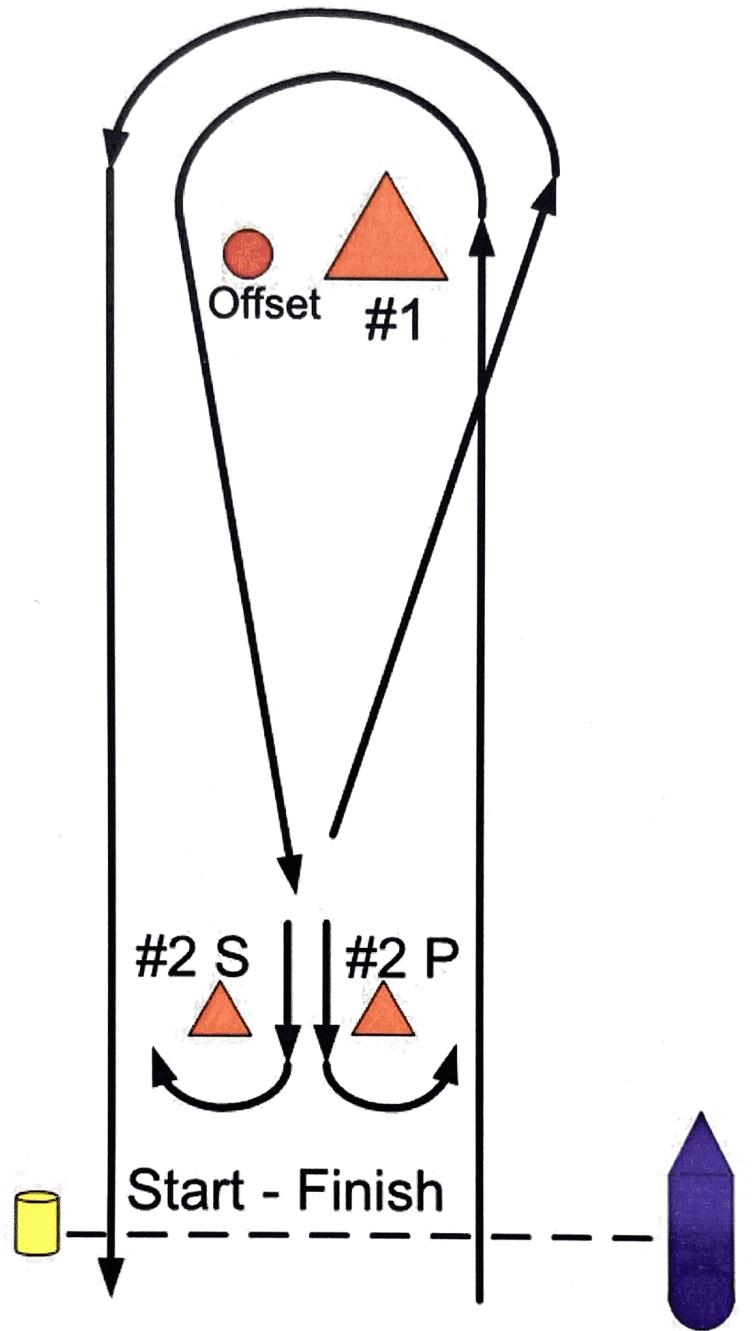
**NOTE**  
NO-DISCHARGE ZONE  
For further information, please refer to the chart. The U.S. Coast Guard Light List and NOAA Hydrographic Survey Data are used in the compilation of this chart. The U.S. Coast Guard Light List is published annually. The NOAA Hydrographic Survey Data is published periodically.



CONTINUED ON NEXT PAGE



ATTACHMENT C



W - Even # of legs