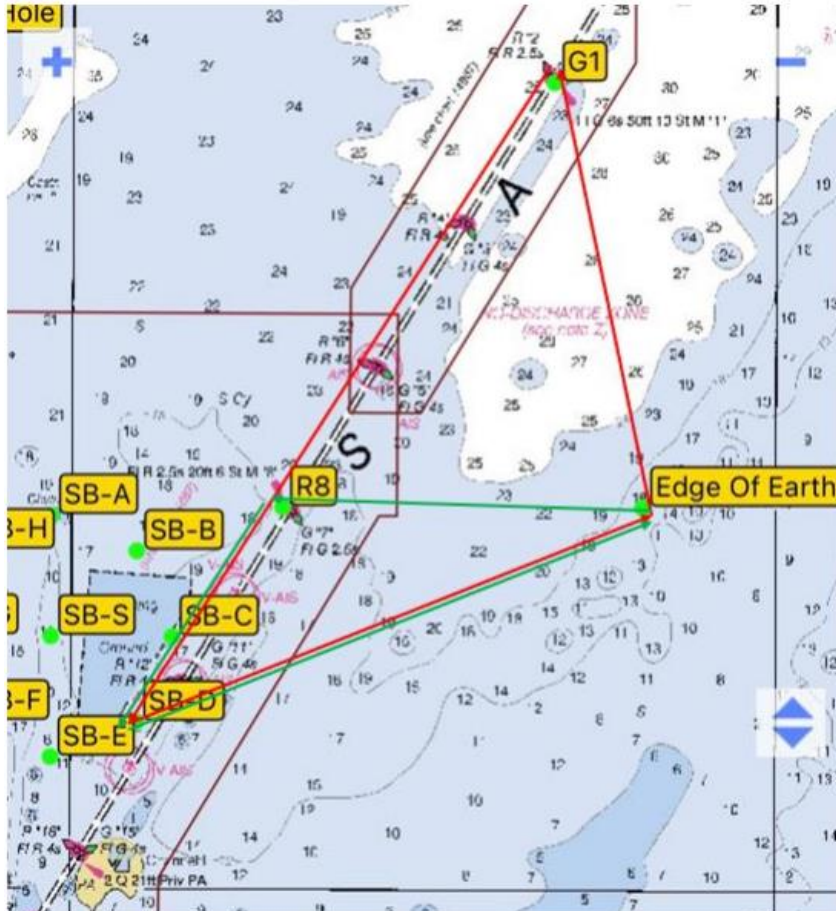


2024 BCYC Weekend Series Sailing Instructions

Amendment #1

Course # 7 shall be deleted in its entirety from the Sailing Instructions and replace with the following:

Course 7 – Morley/Bickel Memorial Edge of the Earth Race



Spinnaker Course Length: 18.0 nm

Cruising Course Length: 12.0 nm

Spinnaker Course (in red) From to Distance& Bearing

From D to Edge of Earth Buoy is 5.6nm, bearing 067° True
From Edge of Earth Buoy to G1 Tower is 4.5nm, bearing 348° True
From G1 Tower to D is 7.9nm, bearing 213° True

Cruising Course (in green) From to Distance & Bearing

From D to Edge of Earth Buoy is 5.6nm, bearing 067° True
From Edge of Earth Buoy to R8 is 3.7nm, bearing 270° True
From R8 to S is 2.7nm, bearing 214° True

Buoy Coordinates

Edge of Earth	Buoy R8	G1
43° 43.951' N	43° 43.940' N	43° 48.330' N
83° 41.867' W	83° 46.990' W	83° 43.150' W