

**2024 Cal Brouwer Memorial  
Shorthanded Challenge  
June 29th, 2024**

**SAILING INSTRUCTIONS**

**1. RULES:**

- 1.1. The race will be governed by *The Racing Rules of Sailing (RRS)*, the Prescriptions of US Sailing, rules of the PHRF of Eastern Connecticut and the rules of participating one-design classes.
- 1.2. Rules of the road provide commercial traffic with the right of way in a restricted channel. **Failure of a racing boat to keep clear, whether intentional or not, will result in disqualification.**
- 1.3. Time-on-Time handicapping will be used for PHRF classes.
- 1.4. US Sailing sail numbers of rule 77 and appendix G are not required
- 1.5. Intermittent use of auto-pilots is allowed for boats sailing with single or double handed crew. This modifies rule 52.

**2. ENTRIES:**

- 2.1. Entries will be accepted or rejected and assigned to classes at the discretion of the Race Committee (RC).
- 2.2. Class assignment and handicaps will be based on the PHRF of Eastern Connecticut. At the discretion of the RC a handicap will be assigned to a boat without an established rating.

**3. CHANGES TO THE SAILING INSTRUCTIONS:**

- 3.1. Any changes to the Sailing Instructions will be posted on the Yachtscore Web Site prior to 0930 if the first Warning Signal is not delayed.

**4. SKIPPER'S MEETING:**

- 4.1. A skipper's Meeting will be held at 9 AM at TYC. If you cannot be there in person, the meeting will be also held on Zoom. Use the link: <https://us06web.zoom.us/j/85802508751?pwd=lp62xto8qAajA0omdqMZR9cy9A3DHs.1>

4.1.1.Meeting ID: 858 0250 8751

4.1.2.Passcode: 313948

**5. SCHEDULE OF RACES & THE START:**

- 5.1. One race is scheduled. Ensign class will start first and then all other classes as indicated below.
- 5.2. The first start sequence will begin around 10:30AM with a horn signal from the Queen Merry. A standard 5 min countdown horn sequence will be 5 min, 4 min, 1 min, then Ensign class start at 10:35 AM. Time will also be announced by the RC on VHF 72 instead of a flag sequence.
- 5.3. The 5 min horn countdown will continue until 10:40 AM. Yachts in the spinnaker and non-spinnaker classes can start any time after 10:40 AM and their start time will be recorded by the RC. Any boats that start after 11 AM will receive an 11AM start time.
- 5.4. Boats who are more than 5 minutes from starting shall keep clear of the starting area. **Failure to comply may result in disqualification..**
- 5.5. Once all boats have started, there will be no one monitoring the race from the Queen Merry.

## 6. **COURSES**

- 6.1. One race of 12-20 NM in length is scheduled. The course will be posted on the Queen Merry board, and announced at the Skippers Meeting and on VHF 72
- 6.2. Planned Courses
  - 6.2.1. Spinnaker class: Queen Merry, **Y, E, V, E, Y**, Queen Merry (18 miles)
  - 6.2.2. Ensign and Non-spinnaker classes: Queen Merry, **Y, X, V, X, V**, Queen Merry (14 miles)

## 7. **MARKS:**

- R - red/green can at Rapid Rock**
- I- Intrepid- red/green DIR**
- X- Red bell buoy at North Hill on Fisher's Island**
- V- Red nun 28VL at Vixen's Ledge**
- N- Red nun 2BL at Black Ledge**
- Y - Red channel marker "2"**
- E- Red bell buoy at Silver Eel**

## 8. **FINISH:**

- 8.1. The finish line will be between a staff displaying an orange flag on the Queen Merry and a finishing mark east of the Queen Merry.
- 8.2. The finish time is the time at which the skipper at the helm crosses between the flag on the Queen Merry and the orange mark. This time should be recorded and sent to the Rear Commodore by email at [racing@thamesyc.org](mailto:racing@thamesyc.org) or by text to 860-465-7618. For the Ensign class it is sufficient to record the boat immediately in front of and the boat behind.
- 8.3. Boats unable to finish are instructed to notify the Rear Commodore on VHF 72.

9. **TIME LIMIT:** The time limit for each class to finish is 17:30, Any boat not finishing within this time will be scored TLE.

## 10. **RADIO COMMUNICATIONS:**

- 10.1. VHF-FM Channel 72 will be used for communication between the race committee and competing boats.

## 11. **PROTESTS:**

- 11.1. A boat intending to protest shall follow Rule 61.1. A written protest shall be delivered to a race official at the clubhouse within one hour after the RC comes ashore.
- 11.2. Notices of protest hearings will be posted on the Racing Information bulletin board. It is intended that any protest be heard as soon as feasible after the day's racing. Failure of either party to appear may result in a judgment against the absentee.

## 12. **SCORING:**

- 12.1 The race will be scored based on the order of finish for Ensign class and corrected TOT for other classes.

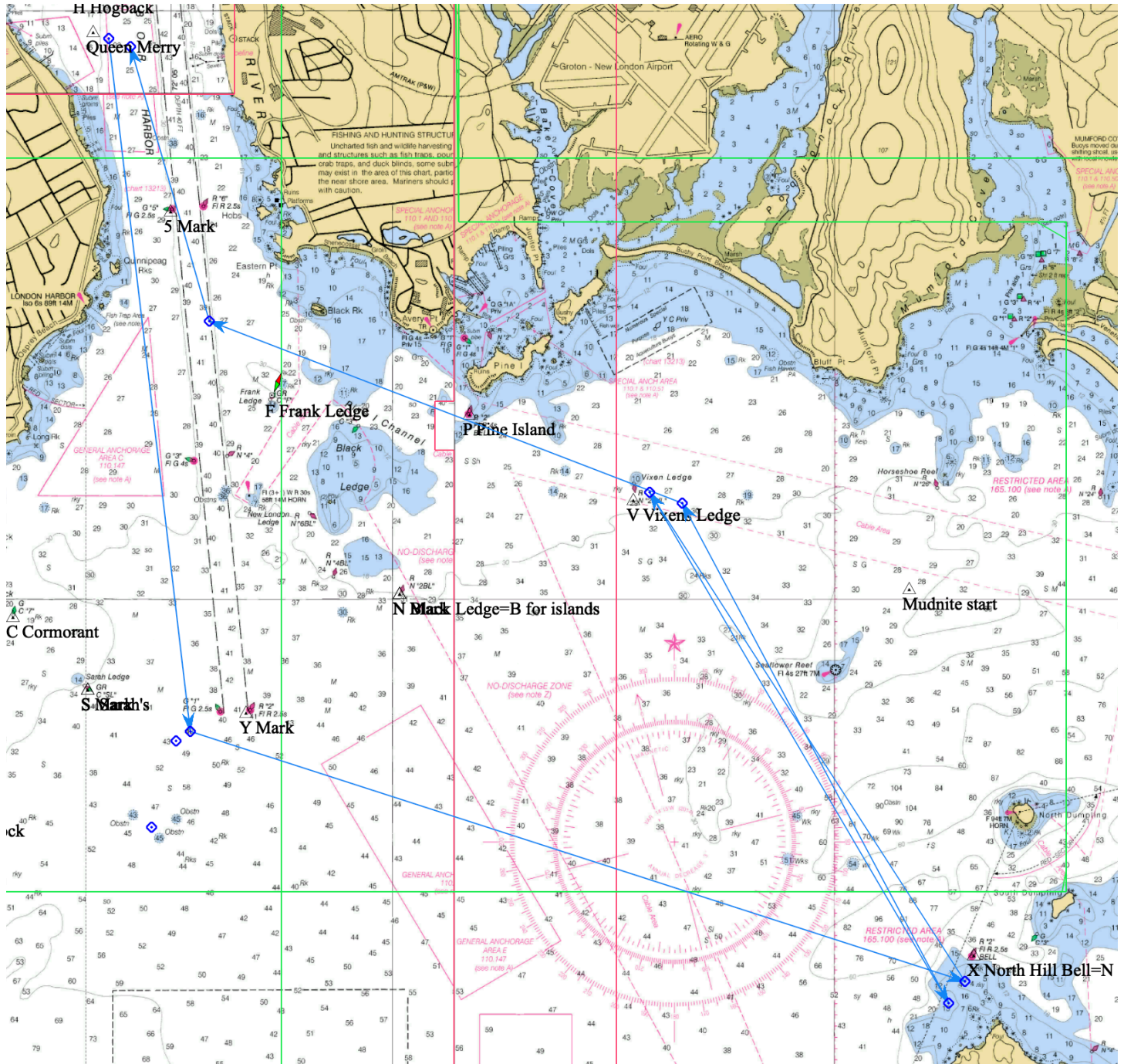
## 13. **AWARDS:**

- 13.1. Race results will be announced at the Clubhouse after the race is completed.
- 13.2. Trophies will be awarded after the race at the TYC clubhouse.

**14. DISCLAIMER OF LIABILITY:**

14.1. Competitors participate entirely at their own risk; see Rule 4, Decision to Race. The organizing authority will not accept any liability for material damage or personal injury or death sustained in conjunction with or prior to, during, or after the regatta. [www.thamesyc.org](http://www.thamesyc.org)

**Course for Ensign and Non-spinnaker classes Y, X, V, X, V (14 miles)**





# Course for Spinnaker classes: Y, E, V, E, V, Y

