



PRESENTED BY



# NEW YORK YACHT CLUB RACE WEEK AT NEWPORT

Presented by ROLEX

*incorporating the Rolex TP52 World Championship,  
the J109 North American Championship, and  
the IC37 National Championship*

July 17-20, 2024  
Newport, Rhode Island

## **SAILING INSTRUCTIONS including AMENDMENT 1 (in red)**

### **1 RULES**

- 1.1** The event will be governed by the rules as defined in *The Racing Rules of Sailing* (RRS), including the current ORC rules, the current NYYC Classics Rules incorporating CRF, the current PHRF Regulations as administered by the PHRF of Narragansett Bay, and the current Class Rules for any one-design classes.
- 1.2** Safety Equipment Requirements:
- Addendum A – US Safety Equipment Requirements (USSER)
    - All boats shall minimally comply with the US Nearshore section of the USSER and shall comply with their Class Rules, where applicable.
    - USSER 2.4.2, 2.4.3, and USSER 2.4.4.1 through 2.4.9 regarding Hull and Structure: Lifelines shall apply, except that boats not normally rigged with lifelines are exempt for these requirements and crew shall wear approved PFDs at all times while racing.
    - In the event of a conflict between these requirements and applicable Class Rules, the Class Rules shall apply.
- 1.3** The US Sailing prescription to RRS 63.2 is deleted. However, when redress under RRS 62.1(a), (b) or (c) has been requested by one or more boats in the same class, the protest committee may invite all boats in that class to attend and be made parties to the hearing.
- 1.4** 12 Metre Class: In the event that a crew member falls overboard and is no longer connected to the yacht, she shall:
- Retire from the race
  - Notify the Race Committee on her respective VHF channel that she has a man overboard
  - Receive a score equal to the number of starters for that race without a hearing. The scoring abbreviation will be MOB.
- This changes RRS 63.1, A4, A5, and A10.
- 1.5** For the IC37 Class:
- OA supplied Velocitek units must be installed as directed and the Velocitek System must be operational while racing. [NP]
  - In accordance with IC37CR H3.2, this event is classified as an A Regatta.

## 2 COMMUNICATIONS: NOTICES, ANNOUNCEMENTS, VHF CHANNELS

- 2.1 Notices, including race documents, results and amendments, shall be posted on the online Official Notice Board located on the event [website](#). Protest Committee information, including protest time limits and hearing schedules, shall be posted on the online Protest Committee Notice Board located on the event [website](#). All notices may also be posted on the unofficial notice boards which are located in the courtyard of the NYYC Sailing Center at Harbour Court.
- 2.2 Any change to the sailing instructions will be posted before 0900 on the day it will take effect, except that any change to the schedule of races will be posted by 2000 on the day before it will take effect. Flag “Lima” will be flown to signify such posting.
- 2.3 In addition to the signals described in SI 3.3, the Race Committee will endeavor to announce the rendezvous locations as described in SI 6 at 0900 over VHF Channel 72. The failure to make this announcement or for a boat to hear this announcement will not be grounds for a boat to request for redress. This changes RRS 62.1(a).
- 2.4 After the rendezvous locations and any other regatta announcements have been made, Race Committee signal vessels will monitor and communicate with their respective classes on the circle VHF channels published in SI 2.5.
- 2.5 VHF Channels – The Race Committee VHF channels for each circle are shown below:
- a) Blue Circle VHF Channel 72
  - b) White Circle VHF Channel 69
  - c) Green Circle VHF Channel 71
  - d) TP52 Circle VHF Channel 68
- 2.6 Each boat shall carry a VHF radio capable of communicating with the Race Committee on their circle channel.

## 3 SIGNALS MADE ASHORE

- 3.1 Flag signals will be flown from the flagpole at Harbour Court.
- 3.2 When pennant “AP” is displayed ashore, “one minute” is replaced with “not less than one hour” in Race Signal “AP”.
- 3.3 Signals designating the rendezvous locations for all circles will be displayed at 0900 each day from the western yardarm of the flagpole at Harbour Court.

## 4 SCHEDULE OF RACES

- 4.1 The following schedule in 4.1 changes NOR 7.3.

<u>Date</u>	<u>Time</u>	<u>Event</u>
Monday, July 15	1300	TP52 Worlds Practice
Tuesday, July 16	1200	TP52 Worlds – First Warning Signal
	1600-1800	RWAN Registration – NYYC Sailing Center
Wednesday, July 17	0800-0900	RWAN Registration – NYYC Sailing Center
	1100	First Warning Signal - All classes except TP52 Worlds
	1200	TP52 Worlds First Warning Signal
	1830-Colors	Opening Reception
Thursday, July 18	1100	First Warning Signal - All classes except TP52 Worlds
	1200	TP52 Worlds First Warning Signal
	Following Racing	Post- Race Social
Friday, July 19	1100	First Warning Signal - All classes except TP52 Worlds
	1200	TP52 Worlds First Warning Signal
	Following Racing	Post- Race Social
Saturday, July 20	1100	First Warning Signal - All classes except TP52 Worlds
	1200	TP52 Worlds First Warning Signal
	1800	Cocktails
	1900	Rolex Awards Dinner

- 4.2 For all classes except the TP52 Worlds class, no warning signal shall be made after 1500 on Saturday, July 20.
- 4.3 For the TP52s Worlds class, no warning signal shall be made after 1530 on Saturday, July 20.

## 5 CLASSES, CIRCLE ASSIGNMENTS, CLASS FLAGS, SCRATCH SHEETS AND FORMAT

- 5.1 Classes:** The Organizing Authority will divide boats into classes. Each class will be given a numeral, alphabetic or class designation and be assigned each day to one of five circles (Blue, White, Green or TP52). Note that a class may sail in different circles and be assigned different numeral designations on different days.
- 5.2 Format:** The Race Committee will notify competitors (no later than 1900 on the day before they will take effect) of the intended type of racing for the following day:
- Navigator Races – SI Addendum A (using government marks and racing marks on Narragansett Bay and/or Rhode Island Sound).
  - Drop Mark Races – SI Addendum B (using inflatable buoys on Rhode Island Sound and/or Narragansett Bay).
- 5.3 Scratch Sheets:** Scratch sheets will be posted on the Official Notice Board.
- 5.4 Class Flags:** Unless indicated on the scratch sheet, each boat shall display the numeric, alphabetic or class flag corresponding to her class designation, as shown on the scratch sheet, from her backstay approximately six feet above the deck from the warning signal for the first class on her circle until she is no longer racing. Boats without a permanent backstay shall conspicuously display these flags in an alternate position in the aft part of the boat.

## 6 RENDEZVOUS LOCATIONS

- 6.1** Circle rendezvous locations are listed below and will be designated as described in SI 3.3. See SI Addendum C – NYYC Primary Race Areas.

### Rhode Island Sound:

- Area “A” -in the vicinity of 160° M for 1.2 NM from R “2” QR Whistle marking Brenton Point
- Area “B” -in the vicinity of 120° M for 2.5 NM from R “2” QR Whistle marking Brenton Point
- Area “C” -in the vicinity of 275° M for 3.0 NM from R “2” QR Whistle marking Brenton Point
- Area “D” -in the vicinity of 225° M for 2.0 NM from R “2” QR Whistle marking Brenton Point
- Area “E” -in the vicinity of 165° M for 3.2 NM from R “2” QR Whistle marking Brenton Point
- Area “F” -in the vicinity of 145° M for 3.5 NM from R “2” QR Whistle marking Brenton Point

### Newport Harbor and near Newport Bridge:

- Area “K” -between Goat Island and Rose Island
- Area “M” -in the vicinity of R “12” west of Rose Island
- Area “O” -in the vicinity of Potter Cove (just north of west end of the Newport Pell Bridge)

### North of Newport Bridge:

- Area “R” -in the vicinity of 200° for 0.5 NM from Halfway Rock
- Area “T” -in the vicinity of Hope Island off Quonset Point
- Area “U” -in the vicinity of 035° M for 1.0 NM from Hope Island (*not shown in Addendum C*)

- 6.2** Once on station, the Race Committee may announce the lat/long positions of the signal boat and starting mark over the circle VHF channel. Failure to make such an announcement, or the timing of any announcement, shall not be grounds for a boat to request redress. This changes RRS 62.1(a).

## 7 CHECK-IN AND RETIREMENT

- 7.1 Check in on Land:** Each boat shall check in at the NYYC Sailing Center at Harbour Court during the registration times so designated in the notice of race.
- 7.2 Check in on Water:** Prior to their course signal each day, each boat shall check in with the Race Committee signal vessel by sailing or motoring by the stern of the signal vessel and announcing her sail number.
- 7.3** Boats retiring shall inform the Race Committee on their circle VHF channel or by calling (401) 845-9633.

## 8 COURSES AND MARKS

The courses and marks are described in the SI Appendices as shown:

Courses using Government Marks	SI Addendum A
Drop Mark Courses	SI Addendum B

## 9 THE START

- 9.1** A boat starting later than 10 minutes after her starting signal will be scored Did Not Start. This changes RRS A5.

- 9.2 For the White, Green and Blue Circles: The starting line will be between a staff displaying an orange flag on the Race Committee signal vessel and either a staff displaying an orange flag on the port-end Race Committee vessel or the course side of the port-end starting mark as described in the relevant SI Addendum.
- 9.3 For the TP52 Circle: the start will be as described in the ESIs.
- 9.4 Boats whose warning signal has not been made shall keep clear of the starting area from the time of the course signals for the first start in the sequence until the warning signal for their class.
- 9.5 The Race Committee will endeavor to hail boats observed to be OCS at the start over their respective circle VHF channel. Failure to hail, the timing or order of any such hails will not be grounds for a boat to request redress. This changes RRS 62.1(a).
- 10 CHANGE OF COURSE**  
See Addendum B – Drop Mark Courses.
- 11 THE FINISH**  
The finishing line will be between a staff displaying a blue flag on the Race Committee signal vessel and the course side of the finishing mark as described in the relevant SI Addendum.
- 12 PENALTY SYSTEM**
- 12.1 For all classes except the IC37 and TP52 Worlds class, US Sailing Prescription Appendix V rule V1 shall apply for all boats. Penalties specified by class rules do not apply.
- 12.2 For the 12 Metre class and any other class with 10 or more entrants US Sailing Prescription Appendix V rule V2 shall also apply.
- 12.3 For the IC37 class the first sentence of RRS 44.1 is changed so that a boat may take a One-Turn Penalty when she may have broken one or more rules of Part 2 in an incident while *racing*.
- 12.4 The Protest Committee may impose suitable penalties, other than disqualification, for breaches of the World Sailing Offshore Special Regulations, other non-Part 2 rules or these SIs. This changes RRS 64.2.
- 12.5 A boat that has taken a penalty while racing shall complete an online penalty acknowledgement form no later than the end of that day's protest time limit.
- 13 TIME LIMIT**
- 13.1 For courses designated in accordance with SI A2.4, SI A2.5 or SI A2.6, the time limit for the first boat to sail the course and *finish* is five hours. Boats failing to finish within 120 minutes after the first boat sails the course and finishes will be scored Time Limit Expired (TLE) and scored points as described in SI 15.3. This changes RRS 35, A4 and A5.
- 13.2 For courses designated in accordance with Addendum B, the time limit for the first boat to sail the course and finish is three hours. Boats failing to finish within 45 minutes after the first boat sails the course and finishes will be scored Time Limit Expired (TLE) and scored points as described in SI 15.3. This changes RRS 35, A4 and A5.
- 13.3 For the 52 Super Series: For courses designated in accordance with Addendum B, the Time Limit for the first boat to sail the course and *finish* is 90 minutes and the 'Finishing Window' is 15 minutes. Boats failing to *finish* within the 'Finishing Window', and not subsequently retiring, penalized or given redress, will be scored Time Limit Expired (TLE) without a hearing. A boat scored TLE shall be scored points as described in SI 15.4. This changes RRS 35, A5.1, A5.2 and A10.
- 14 PROTESTS AND REQUESTS FOR REDRESS**
- 14.1 The intent to protest and the identity of the boat being protested shall be communicated to the Race Committee at the first reasonable opportunity after the boat intending to protest finishes until acknowledged by the Race Committee. This changes RRS 61.1(a).
- 14.2 Written protests or requests for redress shall be submitted through the online hearing request form as soon as possible, but not later than one hour after the Race Committee signal vessel for that circle has docked. The time limit for filing a hearing request will be posted on the Official Notice Board.
- 14.3 Protests will be heard as soon as possible. The Protest Committee will attempt to hear protests in the order of their receipt.
- 14.4 Breaches of SIs 5.4, 7, 9.4, 9.5 and 18 will not be grounds for a protest by a boat. This changes RRS 60.1(a).
- 14.5 The penalty for a breach of SI 9.4 or 9.5 shall be a minimum of two points. This changes RRS 64.2.

## **15 SCORING**

- 15.1** For all classes except the IC37s, a boat's series score will be the total of her race scores. This changes RRS A2. The IC37 class will be scored according to IC37 CRH.3.1.
- 15.2** One race is required to be completed to constitute a series.
- 15.3** Boats that have started and fail to finish within the 'Finishing Windows' listed in SI 13 for any reason, shall, without a hearing, be scored Time Limited Expired (TLE) by the Race Committee and be assigned points equal to the number of boats in her class that have sailed the course and finished within the time limit, plus two. This changes RRS A4 and A5.
- 15.4** Teams competing for the Race Week Team Trophy will be scored in accordance with the notice of race.
- 15.5** For scoring purposes, the distance used (as needed) will be that as calculated by the Race Committee.
- 15.6** ORC Classes: For any race that is not scored using PCS, the decision on wind ranges and course classification (WL or All Purpose) will be at the sole discretion of the Race Committee and shall not be grounds for a request for redress by a boat. This changes RRS 62.1(a).

## **16 PRIZES**

- 16.1** Prizes will be awarded as described in the notice of race.
- 16.2** Additional prizes may be awarded at the discretion of the OA.

## **17 WAIVER AND RELEASE OF LIABILITY**

- 17.1** As a condition of entry, each owner, skipper and participating crew member shall submit, prior to racing, an online liability waiver/media release. The links to this form can be found on the Race Week [website](#).
- 17.2** Media Waiver - Competitors and crew members on the competing boats grant, at no cost, the New York Yacht Club Regatta Association, Inc., New York Yacht Club, and any official sponsors of the regatta, the absolute right and permission to use their name, voice, image, likeness, biographical material as well as representations of the boats in any media worldwide (being television, print and internet media), including video footage, for the sole purposes of advertising, promoting, reporting and disseminating information regarding Race Week at Newport presented by Rolex and the participants in Race Week at Newport presented by Rolex.
- 17.3** Competitors participate in the regatta entirely at their own risk. See RRS 3, Decision to Race. The Organizing Authority, New York Yacht Club and any official sponsors will not accept any liability for material damage or personal injury or death sustained in conjunction with or prior to, during or after the regatta. Attention is also drawn to RRS 46 and USSER 1.2, Responsibility.

## **18 SAFETY REGULATION**

- 18.1** Restricted Channels: Competitors are reminded that Narragansett Bay and its approaches are considered restricted channels for commercial traffic and other vessels restricted in their ability to maneuver. Boats must comply with the government right-of-way rules when in proximity to commercial or privileged marine traffic.
- 18.2** Newport Security Zone: In the event there is racing in Narragansett Bay, competitors should be aware of heightened security around the Navy base in Newport just to the north of the Newport Pell Bridge. The area may be defined by a series of white buoys marking the Newport Security Zone along the coast of the Naval Facilities from Coasters Harbor to the breakwater at the north end of Coddington Cove and the line defined by the buoys is designated as an obstruction. Boats shall not enter this area. A Navy patrol vessel monitors the area and boats navigating in the Exclusionary Zone may face action by Coast Guard and Naval authorities.
- 18.3** Additional Restricted Areas: There may be additional restricted areas due to Navy activity, shipping or fishing operations may be described in an amendment to the sailing instructions.

## **19 NOTES**

- 19.1** The 2024 Race Week at Newport presented by Rolex website can be found at <https://nyyc.org/2024-race-week-at-newport-presented-by-rolex>. For further information please contact:  
New York Yacht Club, Harbour Court  
5 Halidon Avenue  
Newport, RI 02840  
Tel: 401-845-9633  
Fax: 401-846-3303  
Email: [sailingoffice@nyyc.org](mailto:sailingoffice@nyyc.org)

RACE COMMITTEE

Christian Antoni  
Ace Bailing  
Robbie Benjamin  
Bruce Bingman, RO  
Tomas Catala  
Kris Delay  
Rowena Dery  
Tim Dolman  
Tom Duggan, DRO  
Eric Feigel, DRO  
Ingrid Flynn  
Tom Flynn  
Peter Gerard  
Barry Gold  
Carolyn Grant  
Dick Gumpert  
Bill Hawes  
Katrina Hele  
Peter Hoffman  
Ken Hubbard  
Stephen Jeffries  
Thomas Klock  
Maureen Koepfel  
Bob Kottler  
Bob LaBanca  
Joe Larson  
Joe Matison  
Joey Moffitt

Pam Murrin  
Ken Nordine  
Bob Norton  
Patty O'donnell  
Ellyn Osmond  
Cathy Peacock  
Ellen Pesch, RO  
Shelley Peters  
Sharon Purdie  
Richard Rankin  
Whit Rugg  
Luis Samedro  
Michael Shea  
TJ Shea  
Jim Shriner  
Alec Steward  
Joel Stoesser  
Charles Swanson  
Ted Sybertz  
Ellen Sykes  
Taran Teague  
Libby Toppa  
Maria Torrijo, RO  
Barbara Vietor  
John Vincze  
Forrest Williams, PRO  
Ray Wulff

PROTEST COMMITTEE

Paul Gilman  
Timmy Larr  
John Mooney

TP52 UMPIRES

Miguel Allen  
Brad Dellenbaugh  
Bill O'Hara  
Andres Perez  
Sophia Truchanowichz

# SAILING INSTRUCTIONS

## **ADDENDUM A – COURSES USING GOVERNMENT MARKS**

### **A1 ORDER OF START**

The intended order of start will be announced at course signals on the circle VHF channel. Classes may or may not start in numerical order. The Race Committee may combine two or more classes into one start by displaying multiple class flags at the warning signal. The Race Committee will endeavor to announce the next class(es) to start on the circle VHF channel.

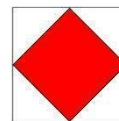
### **A2 COURSES**

- A2.1** All boats shall pass through the center span only for any course passing under the Jamestown Verrazano Bridge and/or the Newport Pell Bridge, in which case the center span bridge piers define a gate mark.
- A2.2** Government marks shall have no required side except when designated as a mark of the course.
- A2.3** No later than the warning signal, the Race Committee will display on a board the course to be sailed. The Race Committee will endeavor to announce the designated courses over the circle VHF channel. Failure to make such an announcement shall not be grounds for a boat to request redress. This changes RRS 62.1(a).
- A2.4 COURSE 1** – If number one is displayed, the course will be clockwise around Conanicut Island:
- Special Mark “E”, if used (see SI A3.6)
  - G “11” Q G Bell to starboard
  - GR “NR” Bell 650 yards SW of Beavertail Point to starboard
  - The center span of the Jamestown Verrazano Bridge
  - G “5” 1,250 yards NW of Conanicut Point to starboard
  - R “2” Fl R 4 Sec Bell 900 yards NE of Conanicut Point to starboard
  - The center span of the Newport Pell Bridge
  - Pass to the west of R “12” off Rose Island
  - Finish off Fort Adams between a staff displaying a blue flag on a Race Committee vessel and the finishing mark. The finishing line will be located approximately 0.65 NM north of the Fl R 6 sec Horn “2” on the northern point of Fort Adams.
- A2.5 COURSE 2** – If number two is displayed, the course will be counter-clockwise around Conanicut Island:
- Special Mark “E”, if used (see SI A3.6)
  - Pass to the west of R “12” off Rose Island
  - The center span of the Newport Pell Bridge
  - R “2” Fl R 4 Sec Bell 900 yards NE of Conanicut Point to port
  - G “5” 1,250 yards NW of Conanicut Point to port
  - The center span of the Jamestown Verrazano Bridge
  - GR “NR” Bell 650 yards SW of Beavertail Point to port
  - G “11” Q G Bell to port
  - Finish off Fort Adams between a staff displaying a blue flag on a Race Committee vessel and the finishing mark. The finishing line will be located approximately 0.65 NM north of the Fl R 6 sec Horn “2” on the northern point of Fort Adams.
- A2.6 COURSE 3** – If number three is displayed, the course will be designated using buoys as described in SI Addendum A3. The Race Committee will list the marks in the order to be rounded and the required side to leave each mark. The course will be:
- Start;
  - Round the marks in the designated order leaving each mark on the designated side;
  - Finish between a staff displaying the blue flag on the Race Committee vessel and the nearby finishing mark. Note that the intended finishing line will be set at the starting location of the Race Committee signal vessel.
- A2.7 COURSE 4** – If number four is displayed, the course will be designated using buoys as described in SI Addendum A3. The Race Committee will list the marks in the order to be rounded and the required side to leave each mark. The course will be:
- Start
  - Round the marks in the designated order leaving each mark to the designated side

- Finish between a staff displaying the blue flag on a Race Committee vessel and the nearby finishing mark. The intended finishing line will be a separate line set approximately .2 to starboard of the anchored Race Committee signal vessel. The Race Committee signal vessel will remain anchored at the location of the start.

**A2.8** The Race Committee vessel at the finish may or may not be the same vessel that started the race.

**A2.9** If at the start, Flag “F” is displayed on a separate pole, the finishing line will be between a staff displaying a blue flag on a Race Committee vessel and the nearby finishing mark in the vicinity of 0.65 NM at a bearing of 355° from the Fl R 6 sec Horn “2” on the northern point of Fort Adams. In the absence of the Race Committee vessel and/or finishing mark, the finishing line will be on a bearing of 120° M from G “3” Gong southeast of Rose Island.



### **A3 MARKS**

**A3.1** The starting mark will be a green tetrahedron buoy.

**A3.2** The finishing mark will be a pink tetrahedron buoy.

**A3.3** Special Marks “E” and “L”, if used, will be the same as the original mark colors for each circle as described in SI B2.1.

**A3.4** If used, Special NYYC Temporary Inflatable Race Marks 16, 17, O2 and N2, as designated on the current South Bay Race Chart, will be orange tetrahedron buoys.

**A3.5** All buoys listed on the current *South Bay Race Chart* provided at registration may be used in Course 3 and Course 4. In addition, the marks listed in SI Addendum A3.6, A3.7, A3.8 and A3.9 below are additional rounding marks that might be used.

#### **A3.6 Special Mark “E”**

- The Race Committee may add a new first Special Mark “E” to any course described in SI Addendum A2.
- If special mark “E” is used for Course 1 or Course 2, the Race Committee will display on a board the letter “E” next to the letter “S” (round special mark “E” to STARBOARD) or next to the letter “P” (round special mark “E” to PORT).
- If Special Mark “E” is used for Course 3 or Course 5, the Race Committee will list “E” along with the designated rounding side as the first mark on the course board as described in SI A2.6.
- The magnetic bearing and distance (in nautical miles to the nearest tenth) to special mark “E” will be posted on a board on the Race Committee signal vessel.

#### **A3.7 Special Mark “L”**

- The Race Committee may set special mark “L” approximately 0.1 NM to windward of the start line.
- If special mark “L” is used, it will be listed as a mark as described in SI Addendum A2.6 and A 2.7.

### **A3.8 GOVERNMENT MARKS AND ISLANDS**

See charts 13205, 13218, 13223, 13226 and 13224 for more detail.

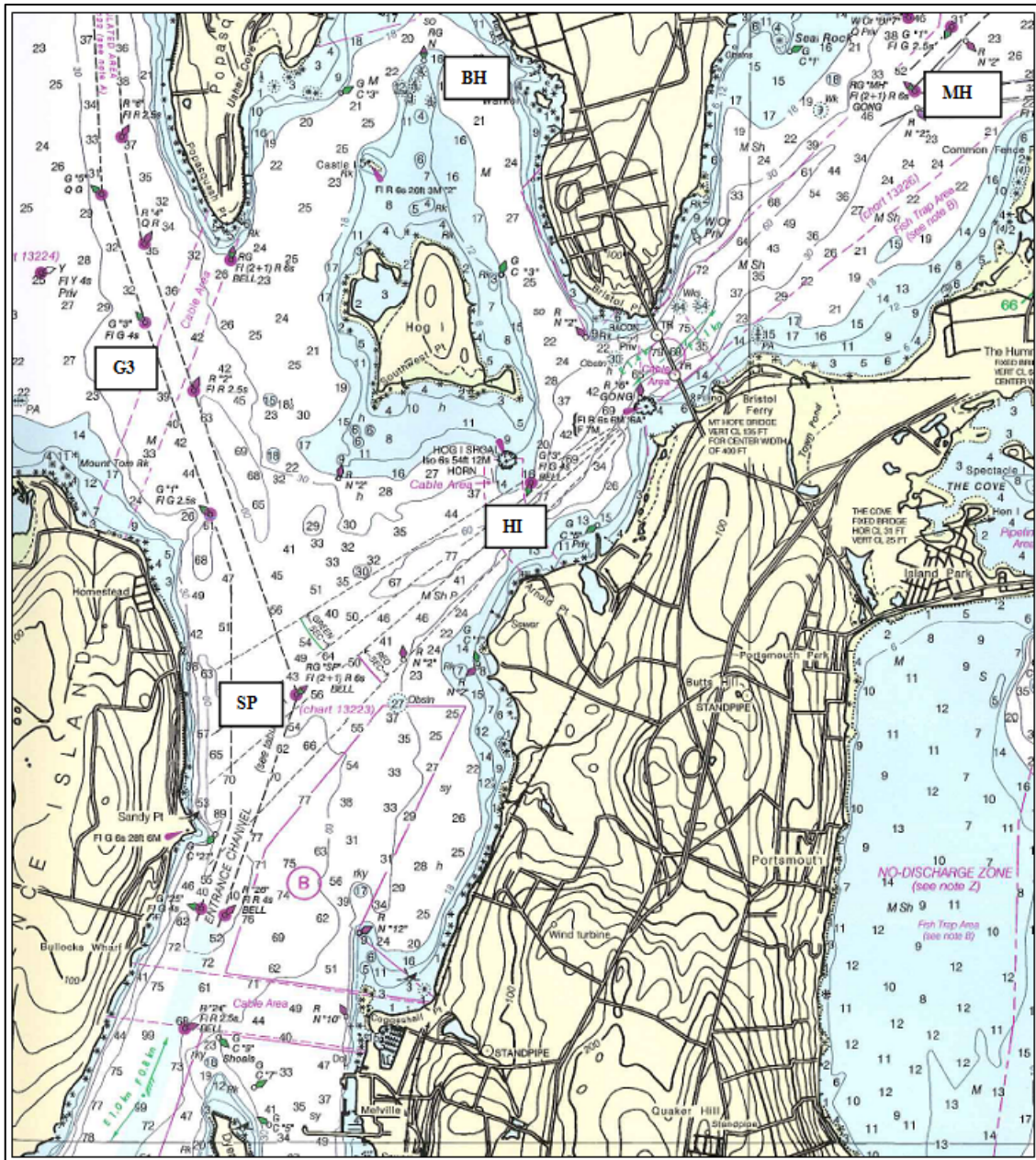
<u>Description</u>	<u>Approx. location</u>
1 Gould Island	41° 32.00’ N; 071° 20.67’ W (center of island)
3 Hope I (east of Quonset) including R “2” at the southwest end and G C “1” at the northeast end	
4 Conanicut Island	
5 RW “NB” Mo(A) WHIS	41° 23.00’ N; 071° 23.36’ W
7 R “2” Fl R 4s WHIS south of Point Judith	41° 18.46’ N; 071° 28.35’ W
1BI G “1 BI” Fl G 4s BELL north of Block I	41° 15.49’ N; 071° 34.55’ W
M Block Island including:	
R “4” Fl R 6s WHIS off Southwest Pt	41° 08.73’ N; 071° 37.35’ W
Black Rock Pt. Buoy 2	41° 08.42’ N; 071° 35.74’ W
U Buzzards Light Tower Fl 2.5s 67ft 17M Horn	41° 23.82’ N, 071° 02.08’ W
PR Prudence Island including R “8” northwest of Patience Island and RG N at the northern end	
SP RG “SP” Fl (2+1) R 6s BELL	41° 36.92’ N; 071° 17.59’ W
G3 G “3” Fl G 4s (approx. 0.5 NM sw of Popasquash Neck)	41° 38.53’ N; 071° 18.46’ W
MH RGR “MH” Fl (2 + 1) R 6s GONG in Mt. Hope Bay	41° 39.54’ N; 071° 14.04’ W
BH RGR N "Middle Ground Buoy" approx. 0.8 NM n of Hog I	41° 39.68’ N; 071° 16.87’ W



HI G "3" Fl G 4s BELL approx. 0.4 NM south southeast of Hog I 41° 37.79' N; 071° 16.29' W

DI Dutch Island

41° 30.19' N; 071° 24.04' W (center of island)



Marks near Prudence Island, Bristol and Mt. Hope Bay

# SAILING INSTRUCTIONS

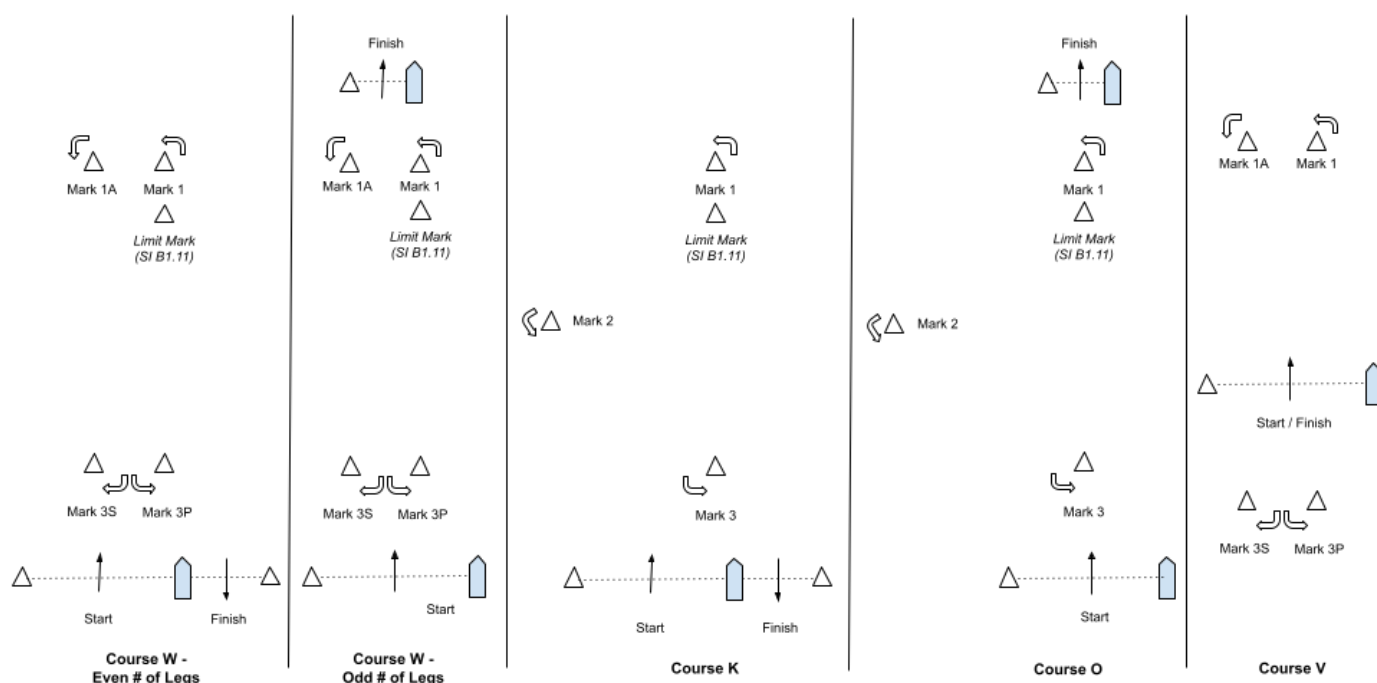
## ADDENDUM B – DROP MARK RACES

### B1 COURSES FOR DROP MARK RACES

**B1.1** The Race Committee signal vessel will signal the course on a course board. Course designations are as follows:

- W2 Start – 1 – 1A – Finish (downwind)
- W3 Start – 1 – 1A – Gate (3S/3P) – Finish (upwind)
- W4 Start – 1 – 1A – Gate (3S/3P) – 1 – 1A – Finish (downwind)
- W5 Start – 1 – 1A – Gate (3S/3P) – 1 – 1A – Gate (3S/3P) – Finish (upwind)
- W6 Start – 1 – 1A – Gate (3S/3P) – 1 – 1A – Gate (3S/3P) – 1 – 1A – Finish (downwind)
- K Start – 1 – 2 – 3 – 1 – Finish (downwind)
- O Start – 1 – 2 – 3 – 1 – 3 – Finish (upwind)
- V Start – 1 – 1A – Gate (3S/3P) – 1 – 1A – Gate (3S/3P) – Finish (upwind)

**B1.2** Course Diagrams:



**B1.3** Course “W” is a Windward/Leeward course with a windward offset mark. A board indicating the number of LEGS to be raced will be shown next to the letter “W”. The distance between the windward mark and the offset mark shall not count as a leg for the purposes of indicating the number of legs.

**B1.4** Course “O” is a Triangle/Windward/Leeward/Windward course.

**B1.5** Course “K” is a Triangle/Windward/Leeward course.

**B1.6** Course “V” is a Windward/Leeward course with a windward offset mark and a start/finish line in the middle.

**B1.7** The leeward mark for Courses “W”, “O” and “K” will be an inflatable mark(s) set approximately 0.10 NM to windward of the starting line. A gate mark 3S/3P may be used for Course “W”.

**B1.8** The leeward mark for Course “V” will be inflatable marks set to leeward of the starting line. A gate mark 3S/3P may be used for Course “V”.

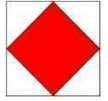
**B1.7** The course designations, distance and bearing to the windward mark will be displayed on a board.

**B1.8** Marks, including the windward offset mark, shall be rounded in order and always left to port, except that a gate, when used, shall be rounded as described in Definitions, *Sail the Course*. In the event a gate is not set, the single leeward mark shall be rounded to port.

**B1.9** There will be a windward offset mark adjacent to the windward mark for courses W2, W3, W4, W5, W6 and V.

**B1.10 Special Finish Mark “F”**

If flag “F” is displayed on a separate pole, the finishing line for that class will be between a staff displaying a blue flag on a Race Committee boat and the nearby finishing mark in the vicinity of 0.65 NM at a bearing of 355° from the Fl R 6 sec Horn “2” on the northern point of Fort Adams. In the absence of the Race Committee boat and/or finishing mark, the finishing line will be on a bearing of 120° from G “3” Gong southeast of Rose Island. This changes SI Addendum B1.1.



**B1.11 Limit Mark**

- a) The Race Committee may set a pink inflatable limit mark approximately 6-8 boat lengths to leeward of the windward mark.
- b) The limit mark shall be left to port on both the upwind and the downwind legs.
- c) In the event of a change of course to the windward mark after the first windward mark rounding in that race, the limit mark will not be set.
- d) The location of the limit mark or the failure of the Race Committee to set the limit mark shall not be grounds for a boat to request redress. This changes RRS 62.1(a).
- e) The Race Committee will display flag “Third Substitute” if the limit mark is a mark of the course.



**B1.12 Long Windward Mark:**

For all “W” courses, the Race Committee may set both a long windward mark and offset, and a short windward mark and offset. The distance to the long windward mark and the distance to the short windward mark will be displayed on a course board. If flag “D” is displayed on a separate pole, that class will use the long windward mark for each weather leg in that race. If flag “D” is not displayed, that class will use the short windward mark for each weather leg in that race.



**B2 MARKS FOR DROP MARK COURSES**

**B2.1** Marks will be inflatable buoys as follows:

<u>Circle</u>	<u>Original marks</u>	<u>Starting</u>	<u>Finishing</u>	<u>Change marks</u>
WHITE	Yellow	Green	Pink	Orange
BLUE	Yellow	Green	Orange	Orange
GREEN	Yellow	Green	Pink	Orange
TP52	Yellow	Yellow		Yellow

**B2.2** The finish mark for Course “V” will be the same color as the start mark.

**B3 COURSE CHANGE**

**B3.1** To change the next leg of the course, the Race Committee will lay a new mark (or move the finishing line) and remove the original mark as soon as practicable. When in a subsequent change a new mark is replaced, it will be replaced by an original mark.

**B3.2** The Race Committee may change the course by up to five degrees in bearing and/or 0.2 NM in length without a signal or change of mark color. This changes RRS 33.

**B3.2** In addition to the requirements in RRS 33, the Race Committee will attempt to announce any course change on the respective circle VHF channel. Failure to make such an announcement shall not be grounds for a boat to request redress. This changes RRS 62.1(a).

**B3.3** The Race Committee may signal a change of course during the start sequence for a class as follows: At the preparatory signal, flag C will be displayed until the starting signal. The change mark will be as described in B2.1. When, in a subsequent change of course a change mark is replaced, it will be replaced with an original mark as described in B2.1.

**B4 THE FINISH**

**B4.1** The finishing line will be between a staff displaying a blue flag on a Race Committee vessel and the nearby finishing mark.

- a) For Course “W” with an odd number of legs and Course “O”, the finish line will be located approximately 0.1 NM to windward of the windward mark.
  - i) On a “W” course with an odd number of legs that has a long windward mark in use, the finish line will be to windward of the long windward mark.

- b) For Course “W” with an even number of legs and Course “K”, the finish line will be located approximately 0.1 NM to leeward of the leeward mark or gate, and the finishing mark will be on the opposite side of the Race Committee signal vessel from the starting mark. See diagrams in SI Addendum B1.2.

**B4.2** The Race Committee vessel at the finish may or may not be the same vessel that started the race.

## SAILING INSTRUCTIONS

### **ADDENDUM C – NYYC PRIMARY RACE AREAS**

