



# MAYORS' CUP REGATTA

*Fiasco for Fun*  
August 18, 2024

Huguenot Yacht Club

## SAILING INSTRUCTIONS



### 1 RULES

- 1.1 The regatta will be governed by the rules as defined in The Racing Rules of Sailing.
- 1.2 RRS Appendix V will apply.
- 1.3 RRS Appendix T will apply.
- 1.4 Rule 61 will be changed to require boats to notify the Race Committee immediately after finishing of their intent to protest.
- 1.5 Each boat shall carry a radio capable of transmitting and receiving VHF channel 71.

### 2 NOTICES TO COMPETITORS

- 2.1 Notices to competitors will be posted on Yacht Scoring <https://yachtscoring.com/emenue.cfm?eid=16545>

### 3 CHANGES TO SAILING INSTRUCTIONS

- 3.1 Any change to the sailing instructions will be posted before 1000 on the day it will take effect, except that any change to the schedule of the race will be posted by 2000 on the day before it will take effect.

### 4 SIGNALS MADE ASHORE

- 4.1 Signals made ashore will be displayed from the flagpole located on the Front Lawn. If a postponement is signaled ashore, the warning signal will be made not less than one hour after flag AP is lowered. This changes Race Signals AP.
- 4.2 Effort will be made to pass the word and broadcast the RC's intention on VHF channel 71.

### 5 SCHEDULE

- 5.1 Date of race: Sunday, August 18<sup>th</sup>, 2024. The first warning is scheduled for 1155.
- 5.2 Number of races: All classes one race.
- 5.3 Start Times and a listing of entrants by class will be available on Yacht Scoring.
- 5.4 Prizegiving will commence after racing at HYC. Food and beverages will be available for purchase.

### 6 RACING AREA

- 6.1 Attachment A shows the location of the racing area.

### 7 COURSES and MARKS

- 7.1 The starting mark and finishing mark will be an orange tetrahedron (Long Course) or G Can "1" (Short Course).
- 7.2 The course will consist of a set of three marks:  
COURSE A MARKS (Attachment A: Long Course): G C "1" Delancy Point, G GONG "21" Matinecock Point, and G "25" Sands Point.  
COURSE B MARKS (Attachment A: Short Course): Drop Mark B (orange tetrahedron), G GONG "23" Prospect Point, and R "2" Hen and Chickens.
- 7.3 Boats shall round all three marks, in any order, and in either direction.
- 7.4 The course will be announced by the Race Committee prior to the Warning Signal over VHF 71.

### 8 THE START

- 8.1 Rule 26 is omitted, and the start will be in accordance with Pursuit Starting Sequence – Attachment P
- 8.2 The starting line will be between a staff displaying an orange flag on the Committee Boat and the starting mark.
- 8.3 Boats may start in either direction.

### 9 THE FINISH

- 8.1 The finish line will be between a staff displaying an orange flag on the Committee Boat and the finishing mark.
- 8.2 Boats may finish in either direction.

### 10 SCORING

- 10.1 YRALIS PHRF Distance Race ratings will be used.

10.2 For each class: the first boat to finish will be first; the second boat to finish will be second; the third boat to finish will be third and so forth.

### **11 TIME LIMIT**

11.1 The time limit for all competitors is 30 minutes after the first boat finishes.

### **12 PROTESTS AND REQUESTS FOR REDRESS**

12.1 Protests shall be delivered to the Event Director within 1 hour after the Race Committee boat docks.

12.2 The protest time limit and a list of protests received will be posted on Yacht Scoring.

### **13 SAFETY**

14.1 Competitors are requested to check in with the race committee at least 10 minutes prior to their designated start time.

14.2 A boat that retires from the race or does not intend to start the race shall promptly report this to the race committee on VHF channel 71 and receive acknowledgement.

### **14 RADIO COMMUNICATION**

16.1 Race information will be given on VHF Channel 71.

16.2 Except in an emergency, a boat shall neither make radio transmissions while racing nor receive radio communications not available to all boats. This restriction also applies to mobile telephones.

### **15 FURTHER INFORMATION**

For further information please contact:

Event/Race Director: Jason Viseltear, [jviseltear@gmail.com](mailto:jviseltear@gmail.com)

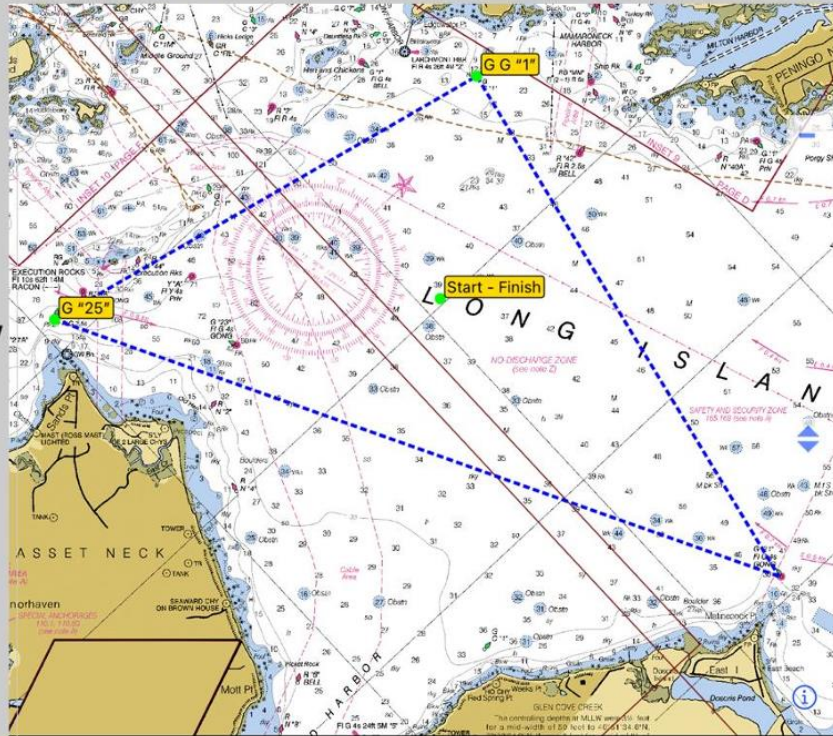
## Attachment A

### Course A (12.97 nm)

Start / Finish  
Orange Tetrahedron  
approximate location  
Latitude: 40°54.126N  
Longitude: 073°42.048W

marks in any order

- G "25" Sands Pt
- G "21" Matinecock Pt
- G C "1" Delancy Pt



### Course B (4.92 nm)

Start / Finish  
G C "1" Execution

marks in any order

- R "2" Hen and Chickens
- G "23" Prospect Pt

Drop Mark B  
Orange Tetrahedron  
approximate location  
Latitude: 40°52.722N  
Longitude: 073°45.209W

