



SWAN BONIFACIO CHALLENGE

Yacht Club de Bonifacio, 28 May – 01 June 2024

SAILING INSTRUCTIONS

1. RULES.

1.1 This event will be governed by:

- (a) the Racing Rules of Sailing 2021-2024 (RRS),
- (b) the ClubSwan 36 and ClubSwan 50 Class Rules unless they are amended within these Sailing Instructions, in accordance with RRS 87.
- (c) the Nations League Scoring System, as available [AT THIS LINK](#)
- (d) For ClubSwan 50 the World Sailing Offshore Special Regulations Category 4, subject to possible amendments by class rules.
- (e) For ClubSwan 36 the World Sailing Offshore Special Regulations Appendix for Inshore Racing, subject to possible amendments by class rules.
- (f) RRS 47 is in force (see NOR 19)
- (g) Prescriptions of FFvoile RRS 2021-2024 (available [here](#))
- (h) In the event of a discrepancy between the Notice of Race and the Sailing Instructions, the Sailing Instructions take precedence. (this changes RRS rule 63.7).
- (i) Appendix UF applies to any races, including to coastal race (if any).
- (j) The notation '[NP]' in a rule of this Notice of Race (NOR) means that a boat may not protest another boat for breaking that rule. This changes RRS 60.1(a).
- (k) For ClubSwan50 Class ONLY: it may be established a "Guest-onboard-day". All ClubSwan 50 teams will be asked to welcome one guest onboard, with the aim of not creating any advantage/disadvantage.

It is the sole responsibility of the OA to decide if, given weather condition, to cancel the "Guest-onboard-day".

This amends Class Rule C.2.6 limited to the "Guest-onboard-day".

Class Rule C.2.6 applies to any other racing days.

- (l) For ClubSwan 36 Class: the Class Rule Crew number/ weight C.2.1(a) is amended as follows:

"The crew weights recorded during the 1st event of The Nations League will apply to all of The Nations League events, with the exception of the Swan OD Worlds.

By entering the weight-in room, each crew member authorizes the Class Secretary to register his/her weight and to record it for the forthcoming events.

Re-weighing shall only take place if a valid protest shows that the pre-race weights were not recorded correctly.

If there is a crew member change FROM THE PREVIOUS EVENT:

- the new crew member will need to weigh-in prior the start of that event;
- the team's overall weight shall remain under the maximum allowed weight, if the weight should exceed the limit, the whole or part of the crew shall re-weigh;

- if two (2) or more crew members are being replaced for an event, the entire team will need to re-weigh in.

A new ClubSwan 36 team joining The Nations League during the season, after the first event, shall weigh-in before the first race it attends.”

(m) For ClubSwan 50 Class: the Class Rule Crew number/ weight C.2.1(a) is amended as follows:

“The crew weights recorded during the 1st event of The Nations League will apply to all of The Nations League events, with the exception of the Swan OD Worlds.

By entering the weight-in room, each crew member authorizes the Class Secretary to register his/her weight and to record it for the forthcoming events.

Re- weighing shall only take place if a valid protest shows that the pre-race weights were not recorded correctly.

If there is a crew member change FROM THE PREVIOUS EVENT:

- the new crew member will need to weigh-in prior the start of that event;
- the team’s overall weight shall remain under the maximum allowed weight, if the weight should exceed the limit, the whole or part of the crew shall re-weight;
- if three (3) or more crew members are being replaced for an event, the entire team will need to re-weigh in.

A new ClubSwan 50 team joining The Nations League during the season, after the first event, shall weigh-in before the first race it attends.”

- 1.2 The organizing committee reserves the right to install on every participating boat a tracking or positioning device. The costs of the installation of these devices will be of the organizers, although the crew must help at all times in the correct installation and use during the regatta, by following the instructions handed out during the registration confirmation and the skipper’s briefing.
- 1.3 Every crew member must be in compliance with its own Sailing Federation National Authority Rules.

2. NOTICES TO COMPETITORS & CHANGES TO SAILING INSTRUCTIONS.

- 2.1 Notices to competitors will be posted on the online Official Notice Board (ONB), on the website of the regatta <https://yachtscoring.com/emenu.cfm?eID=16518> No other way of Official Notice Board will be active.
- 2.2 Any change to the Sailing Instructions will be posted on the online Official Notice Board two hours before the warning signal of the first race on the day it will take effect, except that any change in the schedule of races will be posted before 20.00 hours of the day before it will take effect.

3. SIGNALS MADE ASHORE.

- 3.1 Signals made ashore will be displayed on the Main Flagpole, located nearby the Regatta Village.
- 3.2 (a) When code flag “AP” is displayed ashore, ‘1 minute’ is replaced with ‘not less than 45 minutes’. This changes RRS AP Race Signals.
- 3.3 In addition to the “AP” over “A” signal, when “AP” over “H” is displayed, no boat is authorized to leave the harbour. This changes RRS AP Race Signals.

4. SCHEDULE OF RACES.

- 4.1 The intended program and schedule of races will be as follow, but the Race Committee/ OA reserves the right to change the schedule at its discretion, taking into account weather conditions or all other factors which may impact the fairness of the racing.

Monday 27/05/24	
Registrations	14.00-18.00
Measurements	09.00-18.00
Tuesday 28/05/24	
Measurements	09.00-18.00
Practice Race	14:00
Wednesday 29/05/24	
Skippers briefing	09.30
Racing	12.00
Daily prize giving	At dock in
Thursday 30/05/24	
Racing	12.00
Daily prize giving	At dock in
Friday 31/05/24	
Racing	12.00
Daily prize giving	At dock in
Saturday 01/06/24	
Racing	12.00
Prize-giving ceremony	TIME TBC

- 4.2 A maximum of 8 races are scheduled, of which at least 1 has to be completed by each class for the event to be valid. The RC may decide to sail one coastal race, when weather forecasts permit so. This race counts as one race.
No later than 2 hours before the warning signal, the RC will show the intended coastal course.
- 4.3 When fewer than five (5) races have been completed, a boat's series score will be the total of her race scores.
When five (5) or more races have been completed, a boat's series score will be the total of her race scores excluding her worst score.
- 4.4 No more than 3 races per day will be sailed.
- 4.5 The Race Committee will inform via VHF 72 its intention to start another race. Omission or failure in the emission or reception of that communication shall not be grounds for a request for redress.
[This changes RRS 60.1(b)]
- 4.6 On the last scheduled day of the event no warning signal will be made after 15:00.

5. RACING AREAS, VHF CHANNELS

- 5.1 Races will be sailed in the waters in front of Bonifacio Marina, as per APPENDIX 2 RACE AREA.
- 5.2 The VHF Channel will be: channel 72.

6. CLASS FLAGS

Class Flags:

- CS 50 White flag with logo of the class
- CS 36 Grey flag with the logo of the class

7. COURSES & SHORTENED COURSES.

- 7.1 The Appendix 1 shows the course, including the order in which the marks are to be passed or rounded, and the side on which each mark is to be left. Bearing and Distance to Mark W will be announced on a board on the race committee vessel and broadcast by VHF.
- 7.2 SHORTENED COURSES: Races may be shortened at any mark, provided that a shortened race has a minimum of 3 legs. (2 windward and 1 leeward). This changes RRS 32.

7.3 COASTAL COURSES: A notice will be issued to show the position of the marks that can be used during the coastal race. No later than 2 hours before the warning signal of the coastal race, the RC will show/distribute the intended coastal course.

8. MARKS.

Marks will be as follow:

- * The starting marks will be Race Committee vessel and pin end boat or a yellow mark or between two yellow marks [see SI 9.1(b)].
- * Course marks W and Wo will be yellow
- * Course marks GP/GS will be yellow
- * Course mark Wi will be a red mark
- * Change of course mark will be the original yellow mark or a red mark
- * The finishing marks will be a Race Committee boat and a yellow mark.
- * The Race Committee vessel showing a change of course according SI 10.2

9. THE START AND THE FINISH

9.1 Races will be started using RRS 26. The starting line will be the line between a staff displaying an Orange flag on the Race Committee boat and the starting mark or pin end boat as described in SI 8.
(a) If a Race Committee boat is displaying an orange flag, the starting and finishing line will be between the course side of a red mark and the RC pole displaying the orange flag.
(b) If a Race Committee vessel is displaying an F flag, the starting and finishing line will be between the course side of two yellow marks.

Furthermore, at the starting and at the finishing line that Race Committee vessel is part of the yellow mark.

(c) If the FOXTROT flag has been displayed on the Race Committee boat, no part of a boat's hull shall be in the triangle formed by both ends of that vessel and the closest starting mark during the last minute before her starting signal.

If the Race Committee postpones or abandons a race because its position has been affected by a boat or by an infringement of this rule, that boat will get a scoring penalty of 2 points.

9.2 A boat starting later than 4 minutes after her starting signal will be scored DNS without a hearing. This changes RRS A4, A5, and 63.1.

9.3 In addition to RRS 29.1 & 29.2 individual and general recalls may be communicated by radio VHF. In such case, bow numbers, sail numbers or boat names may be called out for their identification. Delay in the radio communication of these calls, or the order in which they are made, or any omission or failure in the emission or reception of these, shall not be grounds for a request for redress. [This changes RRS 60.1(b)]. This rule does not reduce, modify or exonerate each boat's responsibility to start in accordance with the RRS.

9.4 [DP] Boats, whose warning signal has not been made, shall avoid the starting area, which is defined as the rectangle covering an area of 100 meters to windward and to leeward of the starting line, and 100 meters outwards of each end of the line.

9.5 In the case of unfavorable conditions, the RC Boat at the starting and/or the finishing line can maintain her position by using the engine. This will be no ground to request for redress. This changes RRS 60.1(b).

10. CHANGING OF POSITION OF THE NEXT MARK & CHANGING THE LENGTH OF THE NEXT LEG.

10.1 To change the next leg of the course, the race committee:

- a) will move the original yellow windward marks or will lay a new red mark,
- b) move the leeward gate,
- c) move the finishing line.

When the change of course is made from leeward gate to a windward mark, a Race committee vessel

will display “C” and a colour flag (yellow or red) and the new compass bearing. The windward marks, will be of the same colour of the flag displayed. This changes RRS 33.

When the position of the windward mark (W) is changed, the Offset mark (WO) will be re-laid.

When the position of the windward mark (W) is changed, the WI mark will not be laid.

If the Race Committee changes the position of the leeward marks (gate), the original gate marks will be re-located. If the Leeward mark is to be only one mark, this mark shall be left to port; this mark is not considered a gate and RRS 18.4 will apply.

- 10.2 Except at a gate, boats shall pass between the race committee boat signaling the change of the next leg and the nearby mark, leaving the mark to port and the race committee boat to starboard. This changes RRS 28.

11. [SPARE]

12. PENALTY SYSTEM.

- 12.1 The RRS 44.1 is changed so that the 2-turns penalty is replaced by the 1-turn penalty.
12.2 Penalties for breaches of a rule other than a rule of Parts 1 or 2 of the RRS may be less than disqualification at the discretion of the international jury.

13. TIME LIMITS AND TARGET TIMES.

- 13.1 Time limits and target time are as follows:

<i>Target Time</i>	<i>Time Limit</i>	<i>Time Limit for Mark 1</i>
50'	90'	30'

If no boat has passed Mark 1 within the Mark 1 time limit the race will be abandoned. Failure to meet the target time will not be grounds for redress. This change RRS 60.1(b).

- 13.2 The boats not finishing within 15' from the finish of the first boat, will be scored Did Not Finish without a hearing. This change RRS 35, A4, A5 and 63.1.

14. SPARE

15. PROTESTS AND REQUESTS FOR REDRESS.

- 15.1 Notices of protests by the race committee, technical committee or protest committee will be posted to inform boats under RRS 61.1(b).
15.2 For the purpose of RRS 64.4 (b) the authority is the chief measurer of the event, appointed by the organizing authority.
15.3 [Spare].
15.4 For ClubSwan 50 and ClubSwan 36 Class, SI Appendix “UF” applies.

16. SCORING.

- 16.1 Event scoring system will be the Low Point Scoring System, as described in Appendix A4 of the RRS.

17. SAFETY REGULATIONS. [NP][DP]

- 17.1 Boats must be equipped with a VHF radio transceiver of at least 25 watts of power. The following channels, as a minimum requirement, are mandatory: 9, 16, and the regatta assigned channels.
17.2 Boats not leaving the harbour for the races of the day (DNC) shall inform the Race Office as soon as possible.

- 17.3 Boats not starting or retiring from a race (DNS - DNF) shall inform the Race Office or the Race Committee as soon as possible. All boats shall return only to their allocated moorings.
- 17.4 Boats arriving for any reason at a point ashore other than the ones or that cannot reach the harbour on their own are requested to report immediately to:
Race Officer phone +34 644 471 004 or by VHF 72.

18. REPLACEMENT OF CREW OR EQUIPMENT. [NP][DP]

- 18.1 Changes to crew list shall be made in writing to the Race Committee, indicating the name and ID or Passport number of the substitute crew member and shall be lodged at the Race Office earlier than 120 mins. from the warning signal of the day it refers to. Only substitutions approved by the Race Committee will be accepted. Substitutes shall be subject to weight control.
- 18.2 Substitution of damaged or lost equipment will not be allowed unless approved by the Technical Committee. Requests for substitution shall be made to the committee at the first reasonable opportunity.

19 EQUIPMENT AND MEASUREMENT CHECKS [NP][DP]

- 19.1 A boat or equipment may be inspected at any time for compliance with the class rules and sailing instructions. On the water, a boat can be instructed by a race committee or the technical committee to proceed immediately to a designated area for inspection.

20 EVENT ADVERTISING [NP][DP]

Boats shall display event advertising/branding supplied by the organizing authority as per Appendix 3 of the Sailing Instructions, according to WS regulation 20.4.1 .

21. OFFICIAL BOATS IDENTIFICATION.

- 21.1 The official boats will be identified by displaying flags as follows:
Race committee vessel: Bonifacio Burgee
Race committee ribs: light blue flag with "OFFICIAL"
Umpires: yellow/orange flag
Press: red flag with "PRESS"
- 21.2 Vessels used by press, photograph, VIP's, etc are not under the jurisdiction of the race committee.

22 SAIL NUMBER AND IDENTIFICATION [NP][DP]

The sail number on the mainsail of a boat must correspond to the number declared on the entry form. Penalty for non-compliance will be at the discretion of the International Jury.

23. HAUL-OUT RESTRICTIONS [NP][DP]

Boats shall not be hauled out before 09:30h of the day of the first warning signal, except with and according to the terms of prior written authorization of the Technical Committee.

24. TRASH DISPOSAL [DP]

Boats shall not put trash in the water. Trash shall be disposed in the containers on land. Discarding elastic or wool bands when setting a sail will not be considered a breach of rule 47.

25. RADIO COMMUNICATION [NP][DP]

Except in an emergency, a boat shall neither make radio transmissions while racing nor receive radio

communications not available to all boats. This restriction also applies to smartphone or tablets.

26. PRIZES.

The prize list will be posted on the online Official Notice Board (ONB).

27. DISCLAIMER OF LIABILITY.

The Organizing Authority (OA) and any person or entity involved in the organization of the event will not accept any liability for loss, damage, injury or nuisances to people or things, both on the water or ashore, occurring as a result of taking part in the event announced in this Notice of Race, whether or not they are consequence of any proper or improper action of the OA and any person or entity involved in the organization.

By participating in this event each competitor agrees and acknowledges that sailing is a potentially dangerous activity that carries risks. These risks include the possibility of dealing with strong winds and rough seas, sudden changes in the weather, breakdowns / damage to equipment, manouvering mistakes, poor seamanship by other boats, loss of balance due to yacht instability and fatigue with resulting in an increased risk of injury. The risk of permanent and serious injuries or death by drowning, trauma, hypothermia or other causes is inherent in the sport of sailing.

Competitors and their support persons participate in the event entirely at their own risk. See RRS 3 (decision to race).

APPENDIX INDEX:

Appendix 1. Course.

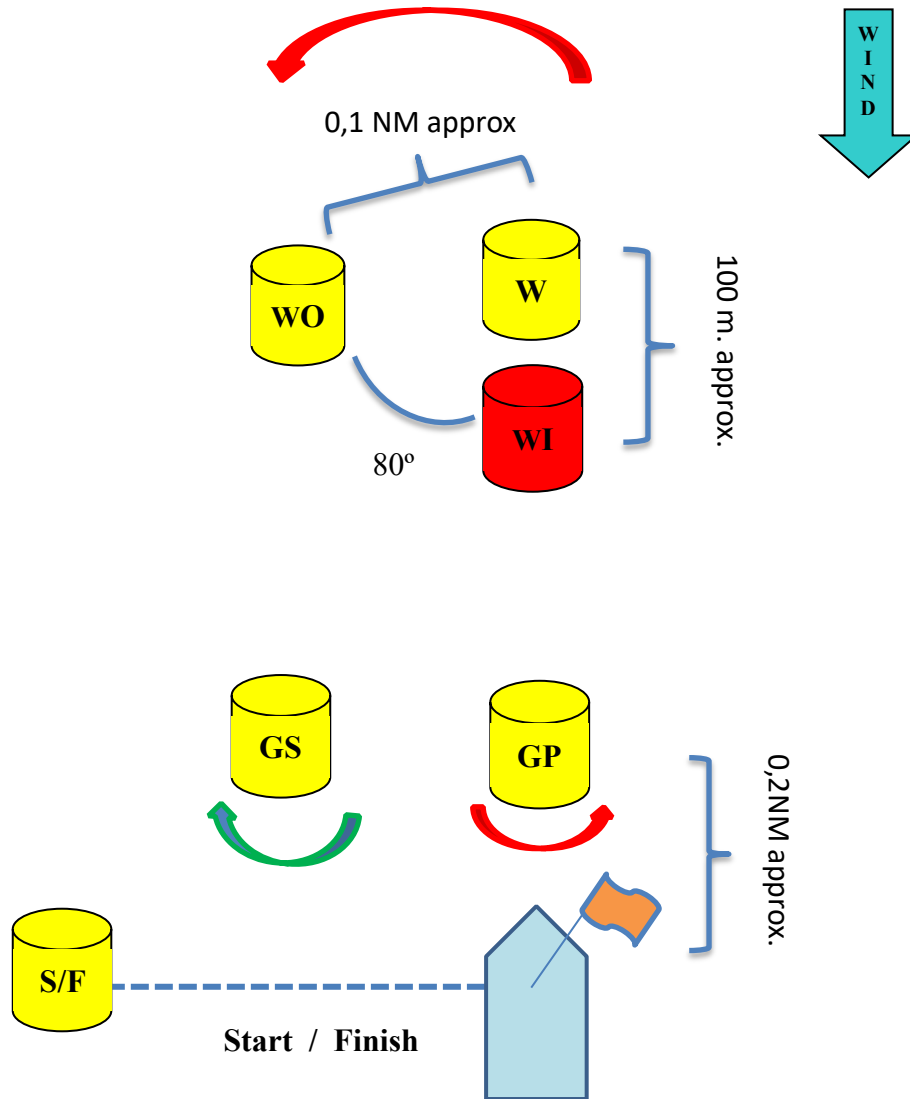
Appendix 2. Race Area.

Appendix 3. Branding.

Appendix UF. Umpiring System

APPENDIX 1 COURSE

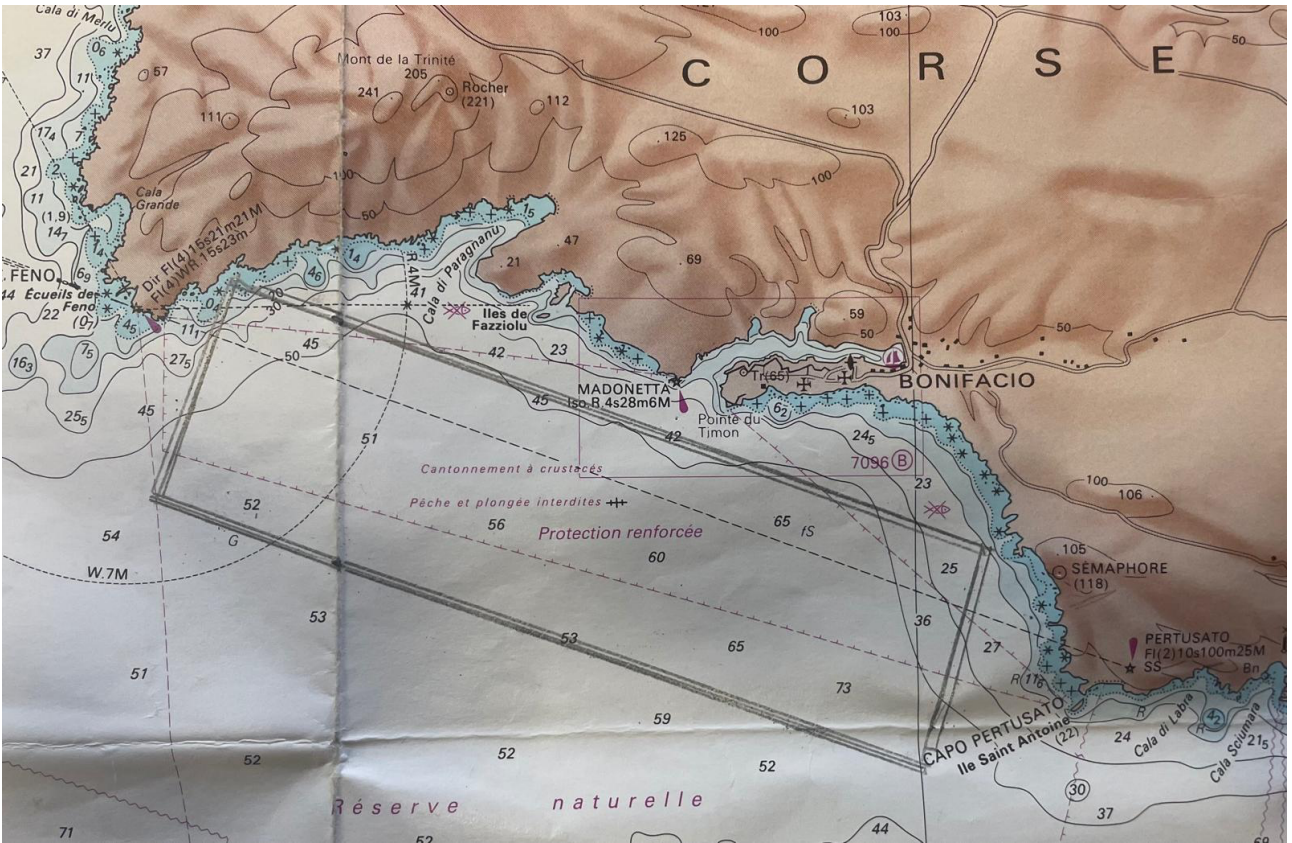
COURSE : Start – WI – W – WO – WI - GP/GS– WI -W – WO – WI - Finish (Downwind).



- Except at a Gate all course marks shall be left to port. When at the gate there is only one mark shall be round to port. This changes RRS 28.

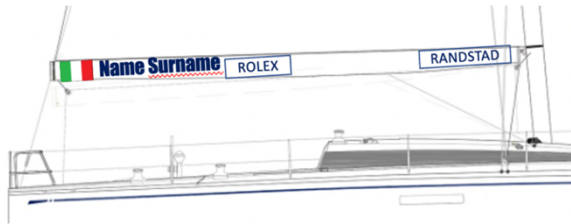
Note: These drawings are schematic. The distances and mark positions are not to scale. This information is approximate. A different distance of the leg or bearing shall not be ground for a request for redress. This changes RRS 60.1(b).

APPENDIX 2 RACE AREA

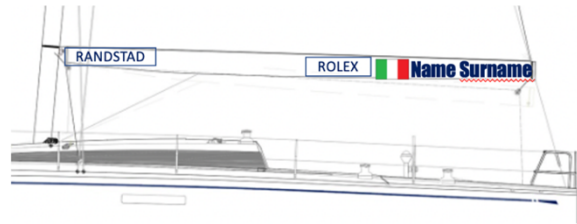


APPENDIX 3 BRANDING

BOOM STICKERS



STARBOARD TACK



PORT TACK

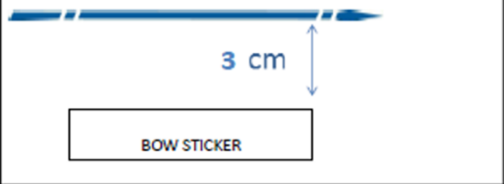


STARBOARD TACK (left to right): NAT FLAG + 5 cm + NAME + SURNAME + 10 cm + ROLEX STICKER
PORT TACK (left to right): ROLEX STICKER + 10 cm + NAT FLAG + 5 cm + NAME + SURNAME

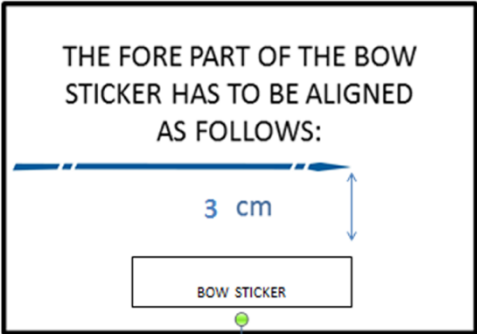
BOW STICKERS

**BOW STICKER POSITION FOR
CLUBSWAN 50 & CLUBSWAN 42**

THE FORE PART OF THE BOW
STICKER HAS TO BE ALIGNED
AS FOLLOWS:



BOW STICKER POSITION FOR CLUBSWAN 36



FLAGS ASHORE



APPENDIX UF

UMPIRED FLEET RACING

Swan One Design Edition

Version: 9th March 2023

Umpired fleet races shall be sailed under The Racing Rules of Sailing as changed by this appendix. Races shall be umpired. The rule changes in UF1 have been approved by World Sailing under Regulation 28.1.5(b) on the condition that only the provided options are used. This appendix applies only when it is referred to in the Notice of Race and made available for all competitors.

UF1 CHANGES TO THE DEFINITIONS, THE RULES OF PART 1 AND 2, AND RULE 70

UF1.1 Add to the definition *Proper Course*: 'A boat taking a penalty or manoeuvring to take a penalty is not sailing a *proper course*.'

UF1.2 Add new rule 7 to Part 1:

7 LAST POINT OF CERTAINTY

The umpires will assume that the state of a boat, or her relationship to another boat, has not changed, until they are certain that it has changed.'

UF1.3 Rule 14 is changed to:

14 AVOIDING CONTACT

14.1 If reasonably possible a boat shall

- (a) avoid contact with another boat,
- (b) not cause contact between boats, and
- (c) not cause contact between a boat and an object that should be avoided.

However, a right-of-way boat, or one sailing within the *room* or *mark-room* to which she is entitled, need not act to avoid contact until it is clear that the other boat is not *keeping clear* or *giving room* or *mark-room*.

14.2 When there is contact between hulls, the umpires may, without a hearing, impose a scoring penalty of 1 point on a boat that was penalized in the incident. Furthermore, the umpires may also impose a scoring penalty of 0,5 points on other boats if they consider that these boats contributed to the contact. This rule also applies to bowsprit, pushpit, pulpit, stanchions, mast, boom and shrouds.

14.3 When there is contact that causes damage, or the umpires decide a boat has broken rule 14 and damage resulted, they may, without a hearing, impose a scoring penalty on any boat involved in the incident. The minimum penalty to be applied in such a case is 1 point.

UF1.4 When rule 20 applies, the following arm signals are required in addition to the hails:

- (a) for *room* to tack, repeatedly and clearly pointing to windward; and
- (b) for 'You tack', repeatedly and clearly pointing at the other boat and waving the arm to windward.

UF1.5 Rule 70 is deleted.

UF1.6 (a) The definition *Mark-Room* is changed to:

Mark-Room Room for a boat to sail her proper course to round or pass the mark on the required side.

However, *mark-room* for a boat does not include *room* to tack unless she is *overlapped* inside and to *windward* of the boat required to give *mark-room* and she would be *fetching* the *mark* after her tack.

UF1.7 Rule 17 is deleted.

UF2 CHANGES TO OTHER RULES

UF2.1 Rule 28.2 is changed to:

28 SAILING THE COURSE

28.2. A boat may correct any errors in *sailing the course*, provided she has not rounded the next mark or crossed the finishing line to *finish*.

UF2.2 Rule 31 is changed to:

31 TOUCHING A MARK

While *racing*, neither the crew nor any part of a boat's hull shall touch a starting *mark* before *starting*, a *mark* that begins, bounds or ends the leg of the course on which she is sailing, or a finishing *mark* after *finishing*. In addition, while *racing*, a boat shall not touch a race committee vessel that is also a *mark*. This rule also applies to bowsprit, pushpit, pulpit, stanchions, boom and crew.

UF3 ON WATER PROTESTS AND PENALTIES

UF3.1 Delete RRS 44.2 and replace with:

44.2 Penalty

After getting well clear of other boats as soon after the incident as possible, a boat takes a Penalty by promptly making the required turn as follows.

a) Before starting, or when on a leg of the course to a windward mark, or a finish at Mark WI, a boat shall promptly sail clear, and as soon as reasonably possible gybe and luff to a close-hauled course.

b) On a leg of the course to a leeward mark, a gate, or the finishing line when finishing on a downwind leg, a boat shall promptly sail clear, and as soon as reasonably possible tack and bear away to a course that is more than 90 degrees from the true wind.

c) On a leg of the course to mark WO a boat shall promptly sail clear, and as soon as reasonably possible:

i) gybe and luff to a close-hauled course, or

ii) tack and bear away to a course that is more than 90 degrees from the true wind.

d) In a long-distance race, a boat shall promptly sail clear and as soon as reasonably possible do a turn, including one tack and one gybe.

However, unless the course is shortened to finish at the windward mark, penalties within the zone of the windward mark or penalties on the offset leg may be delayed and taken as soon as possible on the downwind leg.

When a boat takes the penalty at or near the finishing line, her hull shall sail completely to the course side of the line before finishing.

UF3.2 The first sentence of rule 44.1 is changed to: 'A boat may take a penalty when, in an incident while *racing*, she may have broken one or more of the *rules* of Part 2 (except rule 14 when she has caused damage or injury), rule 31 or rule 42. However, when she may have broken a rule of Part 2 and rule 31 in the same incident, she need not take the penalty for breaking rule 31'

UF3.3 On the Water Protests by Boats and Penalties

(a) While racing, a boat may protest another boat under a rule of Part 2 (except rule 14) or under rule 31 or rule 42; however, a boat may only protest under a rule of Part 2 for an incident in which she was involved. To do so she shall hail 'Protest' and conspicuously display a Y flag at the first reasonable opportunity for each. She shall remove the flag before, or at the first reasonable opportunity after a

boat involved in the incident has taken a penalty voluntarily or after an umpire's decision.

- (b) A boat that protests as provided in rule UF3.3(a) is not entitled to a hearing, unless an umpire signals in accordance with UF3.5(d). Instead, a boat involved in the incident may acknowledge breaking a rule by voluntarily taking a penalty. An umpire may penalize any boat that broke a rule and was not exonerated, unless the boat took a penalty voluntarily.

UF3.4 Penalties and Protests Initiated by an Umpire

(a) When a boat:

- (1) breaks rule 31 and does not take a penalty,
- (2) breaks rule 42,
- (3) gains an advantage despite taking a penalty,
- (4) commits a breach of sportsmanship, or
- (5) fails to comply with rule UF3.6 or to take a penalty when required to do so by an umpire,
- (6) fails to comply with rule UF2.1 (rule 28.2) an umpire shall disqualify her under rule UF3.5(c),
- (7) breaks ClubSwan 42 Class Rule C9.6 (b) and interferes with another boat,

an umpire may penalize her without a protest by another boat. The umpire may impose a penalty or more, each signalled in accordance with rule UF3.5(b), or disqualify her under rule UF3.5(c), or report the incident to the protest committee for further action. If a boat is penalized under rule UF3.4(a)(5) for not taking a penalty or taking a penalty incorrectly, the original penalty is cancelled,

(8) breaks SI 9.1 (c)

- (b) An umpire who decides, based on his own observation or a report received from any source, that a boat may have broken a rule, other than rule UF3.6 or rule 28 or a rule listed in rule UF3.3(a), may inform the protest committee for its action under rule 60.3. However, he will not inform the protest committee of an alleged breach of rule 14 unless there is damage or injury.

UF3.5 Umpire Signals

An umpire will signal a decision as follows:

- (a) A green and white flag with one long sound means 'No penalty.'
- (b) A red flag with one long sound means 'a penalty is imposed or remains outstanding.' The umpire will hail or signal to identify each such boat.
- (c) A black flag with one long sound means 'A boat is disqualified.' The umpire will hail or signal to identify the boat disqualified.
- (d) A Blue flag with one long sound means 'The umpires do not have the facts required to make a decision.'

UF3.6 Imposed Penalties

- (a) A boat penalized under rule UF3.5(b) shall take a penalty.
- (b) A boat disqualified under rule UF3.5(c) shall promptly leave the course area.

UF4 RACE COMMITTEE ACTIONS

- UF4.1** At the finishing line, the race committee will inform the competitors about each boat's finishing place or scoring abbreviation. After this has been done, the race committee will promptly display flag B

with one sound. Flag B will be displayed for at least two minutes and then removed with one sound. If the race committee changes the scoring information provided at the finishing line while flag B is displayed, it will display flag L with one sound. Flag B will continue to be displayed for at least two minutes after any changes are made.

UF5 PROTESTS; REQUESTS FOR REDRESS OR REOPENING; APPEALS; OTHER PROCEEDINGS

UF5.1 No proceedings of any kind may be taken in relation to any action or non-action by an umpire.

UF5.2 A boat is only entitled to a hearing when the umpires have signalled in accordance with UF3.5(d) or under UF5.3.

UF5.3 A boat intending to

- (a) protest another boat under a rule other than rule UF3.6 or rule 28, or a rule listed in rule UF3.3(a),
- (b) protest another boat under rule 14 if there was contact that caused damage or injury, or
- (c) request redress

Shall inform the race committee in the following way:

hail or contact the race committee by radio before or during the display of flag B.

UF5.4 The time limit defined in rule UF5.3 also applies to protests under rule UF5.9, UF5.10 and UF5.11 when such protests are permitted. The protest committee shall extend the time limit if there is good reason to do so.

UF5.5 The race committee will promptly inform the protest committee about any protests or requests for redress made under rule UF5.3.

UF5.6 The third sentence of rule 61.1(a) and all of rule 61.1(a)(2) are deleted.

Rule 62.1(a) is deleted.

UF5.7 The first three sentences of rule 64.2 are changed to: 'When the protest committee decides that a boat that is a *party* to a protest hearing has broken a rule, it may impose penalties other than disqualification, and may make any other scoring arrangement it decides is equitable. If a boat has broken a *rule* when not *racing*, the protest committee shall decide whether to apply any penalty to the race sailed nearest in time to that of the incident or make some other arrangement.'

UF5.8 Hearings

Except for a hearing under rule 69.2

- (a) Protests and requests for redress need not be in writing.
- (b) The protest committee may inform the protestee and schedule the hearing in any way it considers appropriate and may communicate this orally.
- (c) The protest committee may take evidence and conduct the hearing in any way it considers appropriate and may communicate its decision orally.
- (d) If the protest committee decides that a breach of a rule has had no effect on the outcome of the race, it may impose a scoring penalty of points or fraction of points or make any other arrangement it decides is fair, which may be to impose no penalty.
- (e) If the protest committee penalizes a boat in accordance with rule UF5.7 or if a standard penalty is applied, all other boats will be informed about the change of the penalized boat's score.

UF5.9 The race committee will not protest a boat.

UF5.10 The protest committee may protest a boat under rule 60.3. However, it will not protest a boat for

breaking rule UF3.6 or rule 28, a rule listed in rule UF3.3(a), or rule 14 unless there is damage or injury.

UF5.11 The technical committee will only protest a boat under rule 60.4 when it decides that a boat or personal equipment does not comply with the class rules, rule 50, or the rules in the equipment regulations of the event, if such exist. In such a case, the technical committee shall protest.

UF5.12 Rule 66.2 is changed to 'A *party* to the hearing under this appendix may not request a reopening.'