

**ETCHELLS BRITISH NATIONALS
& OPEN CHAMPIONSHIP
16-18 AUGUST 2024**

**ORGANISING AUTHORITY
ROYAL LONDON YACHT CLUB**

SAILING INSTRUCTIONS

The notation '[DP]' in a rule in the Sailing Instructions means that the penalty for a breach of that rule may, at the discretion of the protest committee, be less than disqualification.

1. RULES

See Notice of Race **1 (Rules)**.

2. CHANGES TO SAILING INSTRUCTIONS

2.1 Any change to the Sailing Instructions (SIs) made ashore will be posted by 0900 on the day it will take effect, except that any change to the schedule of races will be posted by 2000 on the day before it will take effect.

3. COMMUNICATIONS WITH COMPETITORS

3.1 Notices to competitors will be posted on the official notice board (ONB).

3.2 The ONB will be online at (www.yachtscore.com) and the race office will be at the Royal London Yacht Club (RLYC).

3.3 The race committee (RC) intends to broadcast race information and course information by VHF Ch 77 and repeated on the event WhatsApp group. See Addendum C.

3.4 Competitors wishing to communicate with the RC should do so on VHF Ch 77. See Notice of Race 3 (Communication).

4. CODE OF CONDUCT

Competitors and support persons shall comply with reasonable requests from race officials.

5. SIGNALS MADE ASHORE AND AFLOAT

5.1 Signals made ashore will be displayed at the RLYC flagstaff and advised on the event WhatsApp group.

5.2 When flag AP is displayed ashore, "1 minute" is replaced by "not less than 45 minutes". This changes Race Signals AP.

6. SCHEDULE

See Amendment No 1 to the Notice of Race **9.1**.

7. CLASS FLAG

The class flag is shown below.

| | |
|------------------|---|
| ICOS Flag "E" | Class Flag  |
|------------------|---|

8. RACING AREA

8.1 Racing will take place in the Solent.

9. COURSES

9.1 The courses to be sailed will be windward/leeward as described in Addendum B.

9.2 Soon after the orange flag attention signal is displayed, and before the warning signal, the RC signal vessel will display the course signal and the approximate bearing and distance to Mark 1. The course signal, compass bearing and distance to Mark 1 will also be announced on VHF.

9.3 If only a single windward or leeward mark is present, boats shall leave that mark to port before proceeding to the next mark of the course.

10. MARKS

10.1 With reference to Addendum B, Marks 1, 1a, 4s & 4p will be orange inflatable marks.

10.2 The starting and finishing marks will be between a committee vessel and a yellow inflatable mark.

10.3 New marks as provided in SI 13 are black marks. In any subsequent change the original marks will be re-laid.

11. OBSTRUCTIONS

11.1 All yachts shall comply with [Associated British Ports Notice to Mariners No 06 of 2024](#) giving details of a Precautionary Area and Moving Prohibited Zone (MPZ). The MPZ shall rank as an obstruction for the purposes of RRS 19 and 20.

11.2 Any official boat in close attendance to a craft in difficulty is an obstruction.

12. THE START

12.1 Races will be started by using RRS 26.

12.2 To alert boats that a start sequence will soon begin, an orange flag will be displayed with multiple sound signals not less than 5 minutes before the warning signal.

12.3 The start line will be between a staff displaying an orange flag on the CV and a yellow inflatable mark.

12.4 The RC may broadcast the bow numbers of individually recalled boats on VHF CH 77, as soon as practicable after Flag X has been displayed. Delay or failure to do so is not grounds for redress. This changes RRS 62.1(a).

12.5 A boat that does not start within five (5) minutes after her starting signal will be scored Did Not Start without a hearing. This changes RRS A5.1 and A5.2.

13. CHANGE OF THE NEXT LEG OF THE COURSE

13.1 To change the next leg of the course, the race committee will lay a new mark (or move the finishing line) and remove the original mark(s) as soon as practicable.

13.2 In the event of a change of course an official vessel positioned near a mark will display the change of course in accordance with RRS 33.

13.3 The RC may announce details of any change under SIs 13.1 and 13.2 using VHF Ch 77 which may include the changed mark colour. Failure of the RC to make such an announcement and for a boat to hear such an announcement, will not be grounds for a request for redress. This changes RRS 62.1(a).

14. THE FINISH

The finish line will be between a staff displaying a blue flag on the committee vessel and a yellow inflatable mark.

15. PENALTY SYSTEM

15.1 See Notice of Race 14 (Penalty System).

16. TIME LIMITS

16.1 The Mark 1 time limit, race time limit (see RRS 35), the finishing window and the target time are shown in the table below.

| Mark 1 Time Limit | Race Time Limit | Finishing Window | Target Race Time |
|-------------------|-----------------|------------------|------------------|
| 30 mins | 90 mins | 20 mins | 50–60 mins |

- 16.2 If no boat has passed Mark 1 within the Mark 1 time limit, or if no boat has finished within the race time limit, the race shall be abandoned.
- 16.3 Finishing window. The time limit for boats to finish after the first boat sails the course and finishes is 20 minutes.
- 16.4 Boats still sailing more than 20 minutes after the first boat finishes shall be awarded the points for the place behind the last boat which has finished the race within this time.
- 16.5 Target time for each race will be 50-60 minutes. Failure to meet the target time will not be grounds for redress. This changes RR62.1(a).

17. HEARING REQUESTS

- 17.1 The protest limit is 90 minutes after the last boat has finished the last race of the day or the RC signals no more racing today, whichever is later.
- 17.2 Hearing forms will be available at the race office and at the Etchells container at CYH.
- 17.3 Protests and requests for redress or reopening shall be delivered to the race office within the protest time limit. Contact mobile phone numbers should be included on the protest form.
- 17.4 Notices will be posted no later than 30 minutes after the protest time limit to inform competitors of the hearings in which they are parties or named as witnesses. Hearings will be held in the protest room located at the RLYC.

18. SCORING

See Notice of Race **15 (Scoring)**.

19. SAFETY REGULATIONS

[DP] A boat that retires from a race shall notify the RC as soon as possible on VHF Ch 77 or by hailing an official support boat or RIB.

20. REPLACEMENT OF CREW OR EQUIPMENT

- 20.1 Substitution of competitors is not allowed without the prior written permission of the RC.
- 20.2 Substitution of damaged or lost equipment is not allowed unless authorised in writing by the RC.
- 20.3 Requests for substitution shall be made to the RC at the first reasonable opportunity.

21. EQUIPMENT AND MEASUREMENT CHECKS

A boat or equipment may be inspected at any time.

22. SUPPLIED BOATS

Does not apply.

23. OFFICIAL VESSELS

- 23.1 Mark-laying vessels will be RLYC RIBs.
- 23.2 The CV will be a white hulled motor catamaran – call sign ‘Cowes United’.

24. SUPPORT PERSON VESSELS

See Notice of Race 16 (Support Person Vessels).

25. TRASH

Trash may be placed aboard official or support person vessels.

26. BERTHING

See Notice of Race **18 (Berthing)**.

27. HAUL OUT RESTRICTIONS

See Notice of Race 19 (Haul Out Restrictions).

28. DIVING EQUIPMENT AND PLASTIC POOLS

See Notice of Race 20 (Diving Equipment and Plastic Pools).

29. PRIZES

See Notice of Race **24 (Prizes)**.

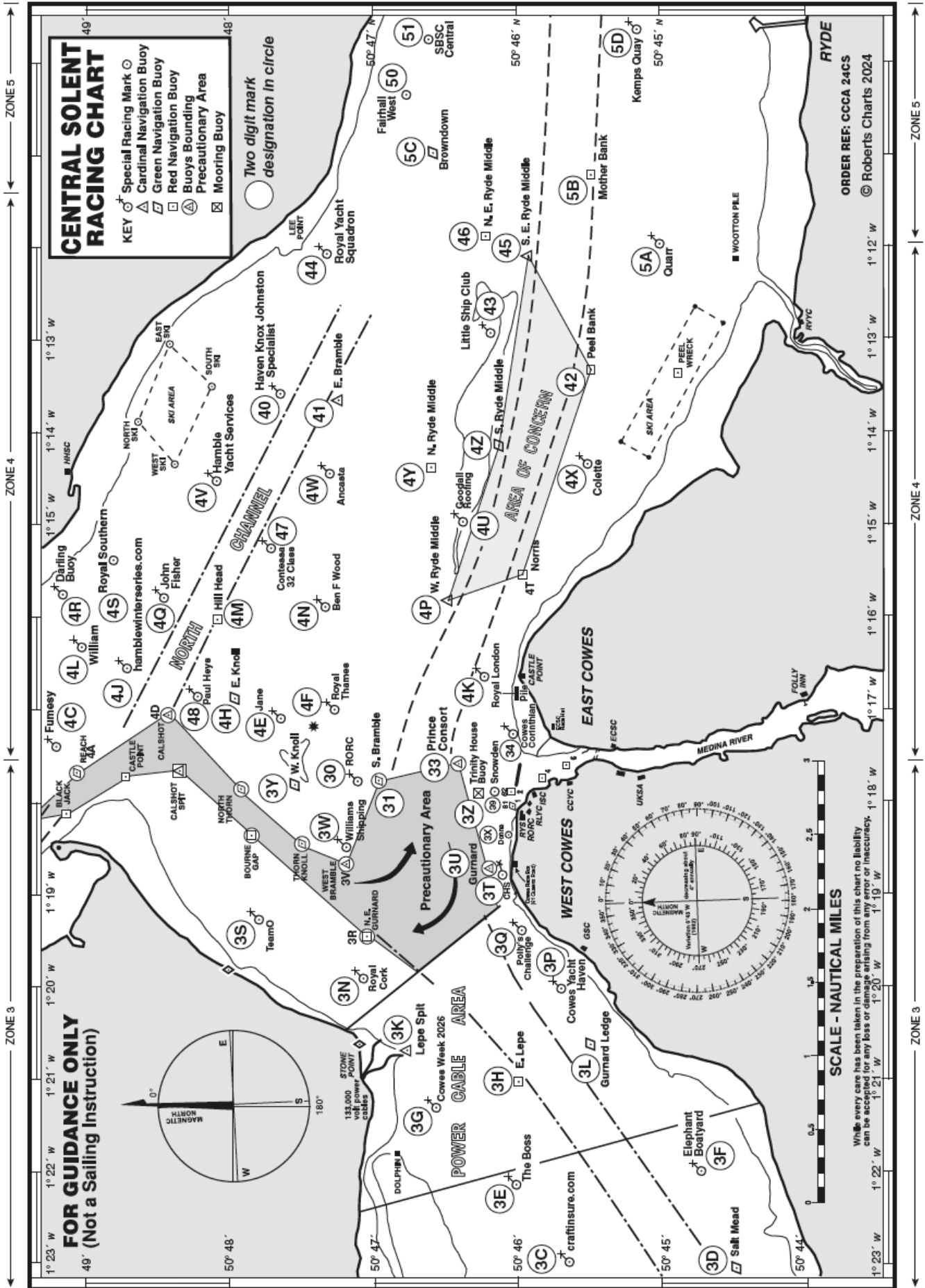
30. RISK STATEMENT

See Notice of Race **22 (Risk Statement)**.

31. INSURANCE

See Notice of Race **23 (Insurance)**.

ADDENDUM A – Solent Chartlet with Two Character Codes



ADDENDUM B – Course Configurations

Course Illustrations – Windward Leeward

L

Course: Leeward finish

| Signal | Mark Rounding Order |
|-----------|---|
| L1 | Start – 1 – Finish |
| L2 | Start – 1 – 4s/4p – 1 – Finish |
| L3 | Start – 1 – 4s/4p – 1 – 4s/4p – 1 – Finish |
| L4 | Start -1- 4s/4p -1- 4s/4p - 1 - 4s/4p - 1- Finish |

W

Course: Windward Finish

| Signal | Mark Rounding Order |
|-----------|--|
| W1 | Start – 1 – 4s/4p – Finish |
| W2 | Start – 1 – 4s/4p – 1 – 4s/4p – Finish |
| W3 | Start – 1 – 4s/4p – 1 – 4s/4p – 1 – 4s/4p – Finish |

LA / WA

Course: Windward/leeward with offset mark 1a

| Signal | Mark Rounding Order |
|------------|--|
| LA1 | Start – 1 – 1a – Finish |
| LA2 | Start – 1 – 1a – 4s/4p – 1 – 1a – Finish |
| LA3 | Start – 1 – 1a – 4s/4p – 1 – 1a – 4s/4p – 1 – 1a – Finish |
| LA4 | Start – 1 – 1a – 4s/4p – 1 – 1a – 4s/4p – 1 – 1a – 4s/4p – 1 – 1a - Finish |
| WA1 | Start – 1 – 1a – 4s/4p – Finish |
| WA2 | Start – 1 – 1a – 4s/4p – 1 – 1a – 4s/4p – Finish |
| WA3 | Start – 1 – 1a – 4s/4p – 1 – 1a – 4s/4p – 1 – 1a – 4s/4p – Finish |

ADDENDUM C – WHATSAPP GROUP

There is a WhatsApp group for receiving general information from the RC. To join the WhatsApp group please use the below QR Code or click on this link:

<https://chat.whatsapp.com/JUITW4Euf03GcwC4b0wdMF>

Instructions on using QR codes:

- For Apple phones: Please open your camera app and point it at the QR code and then follow the link it displays on your screen.
- For Android phones: Please obtain a barcode scanning app from the Google Play Store such as “Barcode Scanner”, open the barcode scanning app and point it at the QR code and then follow the link it displays on your screen.

QR CODE:



All correspondence should be directed to:

The Royal London Yacht Club, The Parade, Cowes, UK, PO31 7QS. Tel: 01983 300727, Email: sailing@rlyc.org.uk