

2024 GASPARILLA REGATTA

Sponsored by MOUNT GAY RUM

February 24th, 2024

Tampa Sailing Squadron

Apollo Beach, Florida



SAILING INSTRUCTIONS

Event website: <https://yachtscoring.com/emenu.cfm?eid=16399>

The notation '[DP]' in a rule means that the penalty for a breach of the rule may, at the discretion of the protest committee, be less than disqualification.

The notation '[NP]' in a rule means that a boat may not protest another boat for breaking that rule. This changes RRS 60.1(a)

1 RULES

1.1 The event is governed by the *rules* as defined in The Racing Rules of Sailing.

2 CHANGES TO THE SAILING INSTRUCTIONS

2.1 Any change to the sailing instructions will be posted before 0900 on the day it will take effect, except that any change to the schedule of races will be posted by 2000 on the day before it will take effect.

2.2 Changes to a sailing instruction may be made on the water by hoisting signal flag L on the Signal boat and advising each boat that comes within hail of the change.

2.3 When signal flag AP is displayed ashore, changes may be posted before flag AP is removed.

3 COMMUNICATIONS WITH COMPETITORS

3.1 Notices to competitors will be posted on the official notice board located by the flagpole at TSS. The online notice board at the event website will act as a repeater for the physical official notice board.

3.2 On the water, the race committees intend to monitor and communicate with competitors on VHF channel 72 for the COURSE E course RRS 26 Start classes, and channel 69 for the COURSE C course Pursuit Start classes.

4 SIGNALS MADE ASHORE

4.1 Signals made ashore will be displayed at the flagpole located adjacent to the TSS official notice board.

4.2 When flag AP is displayed ashore, '1 minute' is replaced with 'not less than 45 minutes' in Race Signals AP.

5 SCHEDULE OF RACES

5.1 COURSE E COURSE: Racer-Cruiser, Cruiser, and Multihull classes:
1200 first signal (RRS 26 warning) others to follow

5.2 COURSE C COURSE: Mother Lode, Double-Handed, and Bay Sailors
classes: 1300 Pursuit Start BASE (first) start time

5.3 One race per class is scheduled

6 CLASS FLAGS

6.1 On the COURSE E course Racer-Cruiser, Cruiser, and Multihull classes will use unmodified RRS 26 starts:

- The Racer-Cruiser class flag is numeral pennant One.
- The Cruiser 'A' class flag is numeral pennant Two.
- The Cruiser 'B' class flag is numeral pennant Three
- The Multihull class flag is numeral pennant Four.

6.2 On the COURSE C course the Mother Lode, Double-Handed, and Bay Sailors classes will use World Sailing Test Rule DR21-01 for Pursuit starts:

- Class flags do not apply

7 RACING AREA

7.1 There will be two racing areas, and two race committees, designated 'COURSE E' and 'COURSE C',

7.2.3 The COURSE E race committee will start and finish the RRS 26-start classes: Racer-Cruiser, Cruiser, and Multihull.

7.2.2 The COURSE C race committee will start and finish the Pursuit-start classes: Mother Lode, Double-Handed, and Bay Sailors.

7.2 The diagrams in SI Addendum 'A' show the locations of the racing areas.

8 COURSES and MARKS

8.1 The diagrams in SI Addendum 'A' show the courses and marks, including the order and direction of rounding for each.

9 THE START

9.1 For the COURSE E race course, Racer-Cruiser, Cruiser, and Multihull classes, races will be started in the default manner using RRS 26.

9.2 For the COURSE C race course, Mother Load, Cruiser, and Bay Sailors, races will be started using World Sailing Test Rule DR21-01, or 'Pursuit starts'. Note also NOR amendment of Feb 15, inserting 1.3 in NOR 1 RULES, reproduced here for convenience:

1.3 For Pursuit-style starting classes ONLY

1.3.1 The OA has adopted World Sailing Test Rule DR21-01 for this event. Accordingly, the definition of Start is changed as follows:

Start A boat starts when, her hull having been entirely on the pre-start side of the starting line and having complied with rule 31 if it applies, any part of her hull crosses the starting line from the pre-start side to the course side either

- (a) at or during her starting signal, or
- (b) during the last 30 seconds before her starting signal.

1.3.2 When a boat starts in accordance with item (b) of the definition Start, she shall not return to the pre-start side of the line, and the starting penalty shall be having the amount of time that she was over early added to her elapsed time, PLUS 30 seconds per mile of rated course length added to her elapsed time after finishing.

9.2.1 Starting times will be assigned by the race committee, staggered according to each boats' rated or assigned (WF)PHRF handicap, weighted by the rated length of the course. A list of starting times will be made available on the Notice Board when the course selection is posted, see SI 8 COURSES and MARKS.

9.2.2 For the purposes of the definition of "racing", each boat's preparatory signal shall be deemed to have occurred four (4) minutes prior to their scheduled start.

9.2.3 At 1255 five minutes before the base start time of 1300, the race committee will display the COURSE C line flag..

9.3 [DP] After the warning signal for the first start, boats shall stay clear of the starting area until four (4) minutes before their scheduled starting time.

9.4 As permitted in RRS 42.3(i), prior to *starting* and not within two (2) boat lengths of the starting line, a boat coming to their start may continue to motor after her preparatory and starting signal times have passed.

10 THE FINISH

10.1 The finishing line is between a staff displaying a COURSE C flag on the Signal vessel at the starboard end and the course side of the port end finishing mark.

11 PENALTY SYSTEM

11.1 Appendix V1 Alternative Penalties will apply.

12 TIME LIMITS

12.1 The time limit for all boats to sail the course and finish is 1700.

11.2 Boats still racing after 1700 will be scored DNF.

13 HEARING REQUESTS

13.1 A boat intending to protest shall notify the race committee of her intentions and the boat(s) to be protested promptly after finishing that race or retirement. This changes RRS 61.1(a). 13.2 The protest time limit is 30 minutes after the applicable race committee finish vessel docks. The docking times and protest time limits will be posted on the Official Notice Board. 13.3 Hearing request forms are available from the Race Committee and must be submitted within the protest time limit to file a protest.

13.4 Notices will be posted on the Official Notice Board no later than 15 minutes after the protest time limit to inform competitors of hearings in which they are parties or named as witnesses.

14 SCORING

14.3 Racing will be scored using PHRF Time-on-Distance.

14.2 Boats with valid WFPHRF certificates will use their RLC rating, other boats will use ratings assigned by the Organizing Authority.

15 SAFETY REGULATIONS

15.1 [DP] Check-in: Before the first warning signal for the first race each day, each boat shall pass close behind the stern of the race committee boat and hail her sail number and name, which will be acknowledged.

10.2 [DP] A boat that retires from a race, or leaves the course area, or returns to the course area during racing shall notify the race committee as soon as possible. A boat failing to meet this requirement may be protested by the race committee or the protest committee.

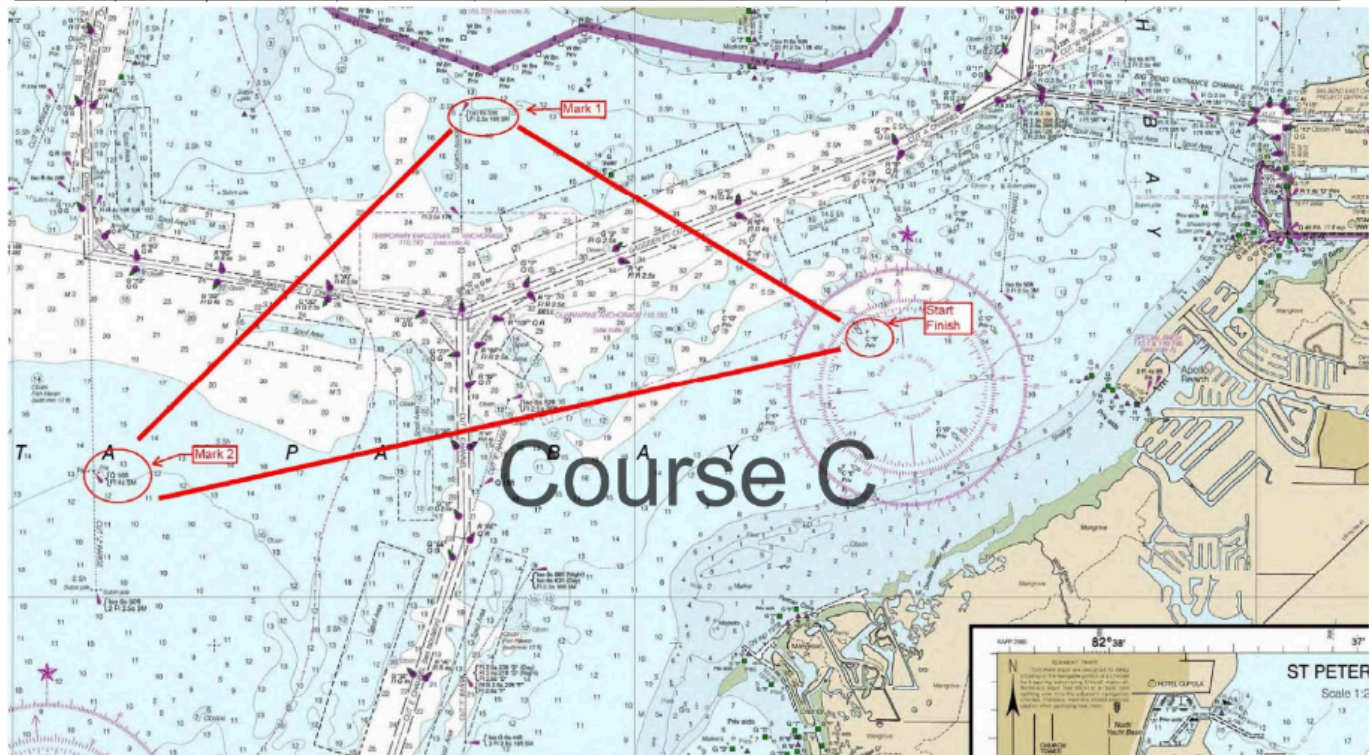
10.3 [DP] A boat and its crew shall at all times keep clear of all commercial vessels and shall not maneuver in any manner which would cause a commercial vessel to be unable to sail its proper course or carry out its commercial functions in a normal manner. A boat whose actions or maneuvers result in a danger signal (5 sounds) from commercial vessels shall be protested by the race committee or protest committee. The penalty for breaking this rule may include disqualification from the regatta.

###

Addendum A.1

Course 5.1X

Approximate Headings ° True, Distances are Nautical Miles							<i>Round All Marks as indicated</i>			
Mark#	Mark ID	Latitude	Longitude	Mark Name	Description	Dist	Hdg	Round	Total	
Start	1X	N 27 46.932	W 082 28.220	TSS Club Mark X	Yellow Cylinder X			To	Dist	
Mk1	13TRT	N 27 48.466	W 082 31.397	Cut F Inbound Range, Rear	HAF 53 Ft	3.21	299°	Port		
Mk2	16SRT	N 27 47.580	W 082 35.229	Cut J Outbound, Front Range	HAF 9.8 ft	3.66	226°	Port	6.87	
Finish	1X	N 27 46.932	W 082 28.220	TSS Club Mark X	Yellow Cylinder X	5.53	076°	Finish	12.4	



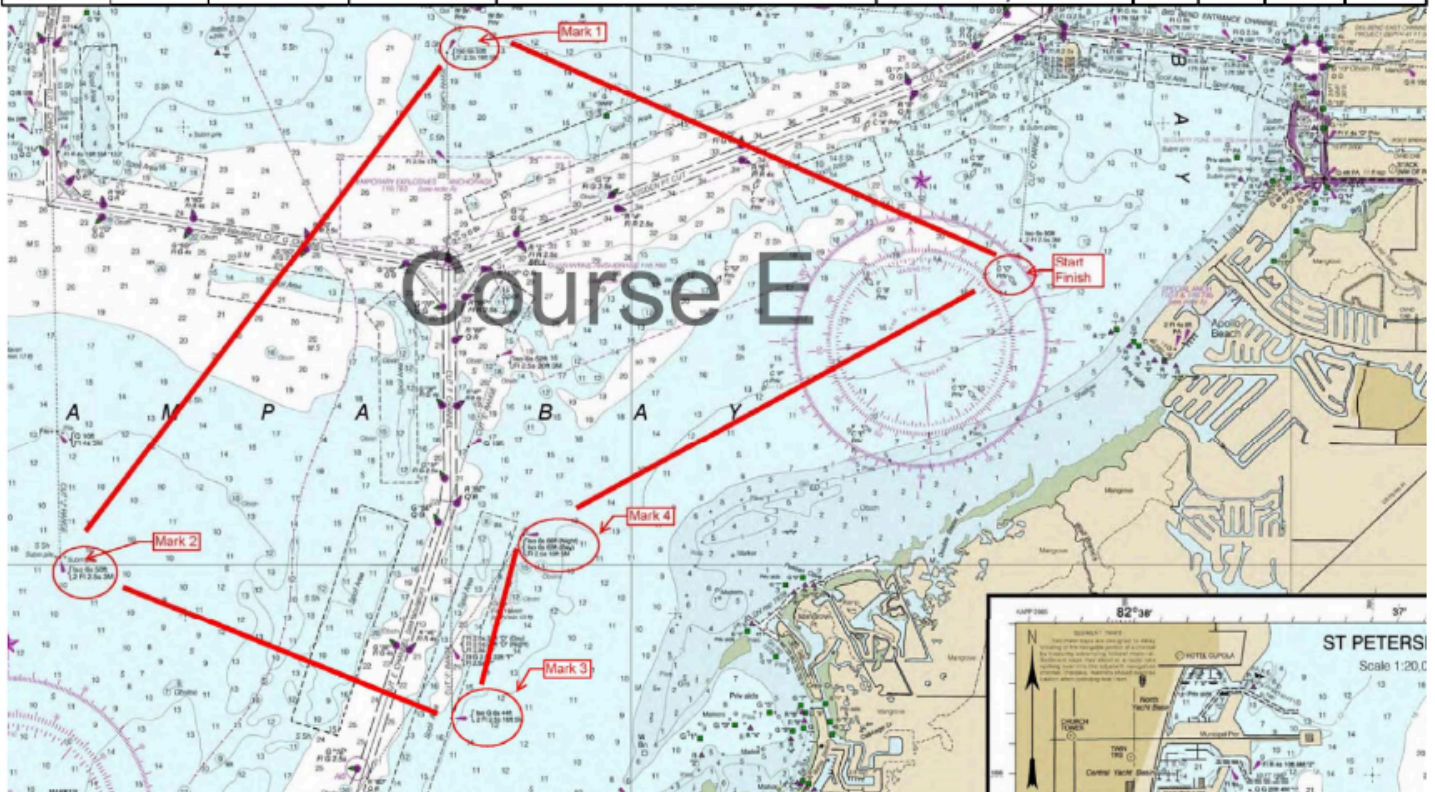
Addendum A.2

Course NW.9.2C

Approximate Headings ° True, Distances are Nautical Miles

Round All Marks as indicated

Mark#	Mark ID	Latitude	Longitude	Mark Name	Description	Dist	Hdg	Round	Total
Start	4C	N 27 46.900	W 082 27.097	TSS Club Mark C	Yellow Cylinder C			To	
Mk1	13TRT	N 27 48.466	W 082 31.397	Cut F Inbound Range, Rear	HAF 53 Ft	4.12	292°	Port	
Mk2	17TRT	N 27 45.052	W 082 34.328	Cut J, Outbound Range, Rear	HAF 50 ft	4.29	217°	Port	8.41
Mk3	19TRT	N 27 43.970	W 082 31.356	Cut F Outbound Range, Rear	HAF 44 ft	2.85	112°	Port	11.26
Mk4	21TRT	N 27 45.191	W 082 30.829	Cut D Inbound Range, Rear	HAF 63 ft	1.31	021°	Stbd	12.57
Finish	4C	N 27 46.900	W 082 27.097	TSS Club Mark C	Yellow Cylinder C	3.72	063°	Finish	16.29



Addendum A.3

Course Overlay

Course C - Starts at mark X

Course E - Starts at mark C

