



ROLEX BIG BOAT SERIES

**St. Francis Yacht Club
September 15-18, 2016**

SAILING INSTRUCTIONS

1. RULES

- 1.1** The regatta will be governed by the rules as defined in The Racing Rules of Sailing, the Prescriptions of US Sailing and the Deeds of Gift for the following trophies: the St. Francis Perpetual, the City of San Francisco Perpetual, the Atlantic Perpetual, the Keefe-Kilborn Perpetual, the Richard Rheem Perpetual, and the Commodore's Perpetual.
- 1.2** J/70 One Design: J/70 Class Rules are in effect.
- 1.3** J/105 One Design: J/105 Class Rules are in effect.
- 1.4** E37 One Design: E37 Class Rules are in effect.
- 1.5** J/120 One Design: Fleet 5 Modifications to the J/120 Class Association Rules are in effect.
- 1.6** California 40 One Design: California 40 Class Rules are in effect.
- 1.7** C&C 30 One Design: C&C 30 Class Rules are in effect.
- 1.8** Handicap divisions: BAMA, ORR, and NorCal PHRF Sportboat are in effect.
- 1.9** RRS 40 will be changed as follows: Competitors shall wear personal flotation devices while racing, except when below deck or briefly while changing or adjusting clothing or personal equipment.
- 1.10** RRS Appendix T, Sections A, B and D will apply.
- 1.11** If there is a conflict between languages, the English text will take precedence.

2. REGISTRATION

Registered boats shall **complete onsite registration** with the StFYC Race Office prior to 1800 hours, September 14, 2016. The required onsite registration after this date requires the written approval by the organizing authority.

3. NOTICES TO COMPETITORS – CHANGE TO SAILING INSTRUCTIONS

- 3.1** Notices to competitors will be posted on the official notice board located in the hallway adjacent to the side (Regatta) entrance of StFYC.
- 3.2** Any changes to the sailing instructions will be posted by 0930 hours on the day they are to take effect, except any changes to sailing instruction 5, Number and Schedule of Races/Race Area Assignments, will be posted by 1900 hours on the day before it takes effect.
- 3.3** Questions regarding the sailing instructions may be submitted in writing to the race committee. Questions and written responses will be posted on the official notice board.

3.4 The race committee may make VHF radio broadcasts as follows:

- (a)** For Starting Areas “**TI**” and “**FM**” - VHF channel 69
- (b)** For Starting Area “**ALZ**” - VHF channel 71
- (c)** For Starting Area “**CIR**” - VHF channel 72

In case of emergencies or to announce retirement from races, competitors may contact the race committee on these VHF channels.

4. SIGNALS MADE ASHORE

4.1 Signals made ashore will be displayed from the flagpole located on the StFYC Race Deck.

4.2 When AP is displayed ashore prior to 1000 hours, “1 minute” is replaced with “not less than 60 minutes” in the Race Signal AP. This changes Race Signal AP.

4.3 When Flag L is displayed to signify a posted notice to competitors it will fly above a numeral flag representing the notice number. This changes Race Signal L.

4.4 Flag B hoisted with one sound signal means “protest filing time has begun”; when lowered with one sound signal means “protest filing time has ended”.

5. NUMBER AND SCHEDULE OF RACES / RACE AREA ASSIGNMENTS

5.1 For each day the scheduled time of the first warning is 1100 hours. Subsequent class warnings will be made as soon as practical after the start of the preceding class.

5.2 See *Attachment A, Race Schedule & Course Area Assignments*.

6. CLASS FLAGS

For One Design classes the class flag will be the class insignia on a white flag.

For ORR A Division, the class flag will be the black Division letter “A”, on a white flag.

For ORR B Division, the class flag will be the black Division letter “B”, on a white flag.

For ORR C Division, the class flag will be the black Division letter “C”, on a white flag.

For PHRF Sportboat Division, the class flag will be the black Division letter “D” on a white flag.

For Multihull Class, the class flag will be a white flag with the black letter “E”.

7. RACING AREA

Four (4) course areas will be utilized as illustrated in *Attachment B – Course Areas & Marks Chartlets*.

8. COURSES

8.1 The courses are described on *Attachment C – Course Descriptions*.

8.2 A placard designating the course will be displayed from the signal boat at or prior to each class warning signal.

8.3 The starting areas listed in *Attachment C* are intended locations only. The race committee may originate any course from any area. Distances are for reference only. They are approximate and may differ depending on actual starting location used.

9. MARKS

9.1 The marks are described on *Attachment D – Description of Marks*.

9.2 Marks “G”, “2gate” and “18gate” will be a gate. In the event that one of the gate marks is not in place the remaining mark shall be rounded to port.

9.3 For Mark “W” the approximate distance and bearing will be displayed from the signal boat.

10. AREAS THAT ARE OBSTRUCTIONS

10.1 For safety reasons, each of the lines bounded by the following two points is an obstruction:

(a) The southern end of the SF Marina entrance Wave Attenuator and the closest point ashore.

(b) The northern end of the SF Marina entrance Wave Attenuator and the closest point ashore.

(c) The “H” Beam piling (located approximately 200 yards west of the St. Francis YC) and the closest point ashore.

- (d) Anita Rock Light located approximately 0.30 NM West of StFYC (“Anita Rock” Q 20ft 5M), and the closest point ashore.
- (e) Anita Rock Light located approximately 0.30 NM West of StFYC (“Anita Rock” Q 20ft 5M), and a yellow buoy “AR”, or a temporary white ball in its place, (located approximately 100 yards northwest of the Anita Rock Light).
- (f) Yellow buoy “AR”, or a temporary white ball in its place, (located approximately 100 yards northwest of Anita Rock Light) and the closest point ashore.
- (g) The South Tower of the Golden Gate Bridge and the closest point ashore.
- (h) The Green/Red Bell Buoy off the west end of Alcatraz Island and Alcatraz Island.
- (i) The Green Buoy (G“3”) south of Point Blunt-Angel Island and the closest point ashore.
- (j) The northeastern most corner of Pier 45 and Fl R 2.5s “2” on the easternmost end of the Aquatic Park breakwater.
- (k) The orange buoy off of Pier 39 and the end of Pier 39.
- (l) The orange buoy off of Pier 43-1/2 and the end of Pier 43-1/2.

10.2 These lines rank as obstructions and boats shall not cross these lines while racing.

11. THE START

11.1 Class starting locations: See *Attachment A, Race Schedule & Course Area Assignments*.

11.2 Starting areas:

- (a) Treasure Island Starting Area “**TI**” will be approximately .5NM west of Treasure Island.
- (b) Fort Mason Starting Area “**FM**” will be approximately .1NM north of Fort Mason.
- (c) Alcatraz Starting Area “**ALZ**” will be off the western face of Alcatraz Island.
- (d) Berkeley Circle Starting Area “**CIR**” will be approximately 3NM east of Angel Island.
- (e) Should conditions warrant the relocation of a starting area the signal boat will display signal flag “L” with one sound.

11.3 For the first race each day, the starting order will be the order stated in *Attachment A, Race Schedule & Course Area Assignments*. For all following races each day, the starting order will be determined by the race committee.

11.4 The starting line will be between a staff displaying an orange and yellow striped flag on the starting line signal boat, and a staff displaying an orange and yellow striped flag on the pin boat or an inflatable orange ball set to port (facing upwind).

11.5 The race committee may hail via VHF the sail number(s) or boat name(s) or bow number(s) of the boat(s) identified on the course side of the starting line at the starting signal. The failure of a hail, the failure of a boat to hear the hail or the order of the hails shall not be grounds for redress.

11.6 A boat that starts later than five (5) minutes after her starting signal shall be scored DNS. This changes RRS 63.1, A4.1 and A5.

12. CHANGE OF THE NEXT LEG OF THE COURSE

The race committee may change the course by up to five degrees in bearing and/or .2nm in length without a signal or change of mark color. This changes RRS 33.

13. THE FINISH

13.1 Finish areas: See *Attachment C – Course Descriptions*.

Finish Lines:

- (a) “**DW**” (downwind) – Will be between a staff displaying an orange and yellow striped flag on the starting line signal boat and a white inflatable set to port (facing downwind).
- (b) “**UW**” (upwind) – Will be between a staff displaying an orange and yellow striped flag on a race committee boat and a port-end (facing upwind) orange buoy located approximately 200 yards upwind of Mark “W”.
- (c) “**RD**” – between Mark “A” and a yellow placard on the StFYC Race Deck.

14. PENALTY SYSTEM

14.1 Penalties at the Time of the Incident:

(a) The provisions of RRS Appendix T, Section A (Penalties While Racing) apply:

The first two sentences of RRS 44.1 are changed to: A boat may take a One-Turn Penalty when she may have broken a rule of Part 2 or RRS 31 while *racing*. However, when she may have broken a rule of Part 2 while in the *zone* around a *mark* other than a starting *mark*, her penalty shall be a Two-Turns Penalty.

(b) As an alternative to the penalty described in (a) above, a boat may take a scoring penalty defined in RRS 44.3. The third sentence of RRS 44.1 is hereby deleted. In addition to notification requirements of 44.3(a) and (b), a boat that takes a Scoring Penalty in accordance with RRS 44.3 shall complete a penalty declaration form. Declaration forms will be available on the wall adjacent to the official notice board. Completed forms must be lodged with the jury desk within the protest time limit (SI 16.2).

(c) When a boat takes a Turns Penalty for an incident at, or in the *zone* of Mark “W”, her earliest opportunity may be after rounding Mark “O”. This changes RRS 44.2.

14.2 Post-Race Penalties:

The provisions of RRS Appendix T, Section B (Post-Race Penalties) apply. T2.2 is changed as follows:

The Post-Race Penalty shall be:

(a) 30% of the difference between the boat’s finishing position and the number of starters, rounded up to the next whole number, if taken before the protest time limit, or

(b) 40% of the difference between the boat’s finishing position and the number of starters, rounded up to the next whole number, if taken after the protest time limit but before the beginning of a hearing involving the incident.

14.3 Arbitration:

The provisions of RRS Appendix T, Section D (Arbitration) apply.

15. TIME LIMITS

15.1 The time limit for each race will be 4½ hours.

15.2 For One Design classes, a boat failing to finish within 45 minutes after the first boat in her class sails the course and finishes, will be scored “DNF” by the race committee. This changes RRS 35 and A4.1.

15.3 For Handicap divisions, a boat failing to finish within 90 minutes after the first boat in her division sails the course and finishes, will be scored “DNF” by the race committee. This changes RRS 35 and A4.1.

15.4 On the last day of the regatta the warning signal for first start in a racing area shall not be made after 1430 hours. Subsequent class warning signals or warning signals for re-started classes may be made after this time.

16. PROTESTS AND REQUESTS FOR REDRESS

16.1 For all divisions and classes, protests and requests for redress shall be lodged with the jury representative at the jury desk.

16.2 The protest time limit is 60 minutes after the hoisting of Flag B – SI 4.4. The race committee will post on the official notice board the end of the protest time limit when it displays Flag B ashore. The same time limit applies to protests by the race committee and International Jury about incidents they observe in the racing area. The posted time limit will prevail. This changes RRS 61.3 and 62.2.

16.3 The time and place of all hearing(s), the boat(s) protesting, boat(s) being protested and boat(s) requesting redress will be posted on the official notice board. Notices of hearings will be posted not later than 10 minutes after filing of a protest or request for redress to inform competitors. This serves as notification as per RRS 63.2.

16.4 If all parties are assembled, hearings may begin prior to the end of the protest filing time.

16.5 In an effort to make the arbitration and protest hearing process more efficient, the International Jury intends to use a pager system to informally alert parties of impending hearings. Upon filing a protest or learning they are a party to a protest, parties should obtain a pager (coaster) from the jury representative at the jury desk. The International Jury will attempt to page the parties approximately five minutes before the hearing is to begin. Pagers will be returned to the jury representative at the jury desk, or if the jury desk is closed, to the International Jury at the hearing, and parties failing to return pagers will be charged for the cost of the pager. Failure of the International Jury to make a page or failure of a party to hear a page will not be grounds for redress. This changes RRS 62.1(a).

- 16.6** On the last scheduled day of racing, a request for reopening a hearing shall be delivered (a) within the protest time limit if the requesting party was informed of the decision on the previous day or (b) no later than 30 minutes after the requesting party was informed of the decision on that day. This changes RRS 66.
- 16.7** On the last scheduled day of racing, a request for redress based on a jury decision shall be delivered not later than 30 minutes after the decision was posted on the official notice board. This changes RRS 62.2.
- 16.8** Breaches of sailing instructions 18, 19, 20, 21, 22, 25 and 26 will not be grounds for a protest or redress by a boat. This changes RRS 60.1(a) and (b). At the discretion of the International Jury, penalties for above breaches and for RRS 55 breaches, SI 19 excluded, may be less than disqualification.
- 16.9** Decisions of the International Jury will be final as provided in RRS 70.5.
- 17. SCORING**
- 17.1** The Low Point Scoring System of RRS Appendix A will apply, except each boat's score will be the sum of her scores for all races. This changes RRS A2.
- 17.2** Handicap Divisions Scoring Calculation:
- (a) **ORR** will be scored on corrected time using *San Francisco Bay* Time-On-Time (TOT).
 - (b) **Multihull** will be scored on corrected time using Time-On-Time (TOT).
 - (c) **PHRF Sportboat** will be scored on corrected time using NCPHRF Time-On-Distance (TOD).
- 17.3** One race must be completed to constitute a series.
- 17.4** Competitors questioning scoring results may submit Scoring Inquiry Forms to the jury desk. Race committee responses to these written inquiries will be posted on the official notice board.
- 18. SAFETY REGULATIONS**
- 18.1** RRS 40 is changed as follows: Competitors shall wear personal flotation devices while racing, except when below deck or briefly while changing or adjusting clothing or personal equipment.
- 18.2** A boat retiring from a race or one that leaves the race area between races, where practical, shall notify the race committee on the water as soon as possible, or the StFYC Race Office immediately after arrival ashore.
- 19. COMMERCIAL TRAFFIC**
- 19.1** As stated in the RRS preamble to the Part 2 rules, when a boat sailing under these rules meets a vessel that is not, she shall comply with the International Regulations for Preventing Collisions at Sea (IRPCAS) or government right-of-way rules. This supplements, but does not replace the rules of Part 2.
- 19.2** If a commercial vessel has sounded five blasts, and/or the vessel or the Coast Guard identifies an offending boat, the race committee shall protest the boat, in which case the jury shall assume that the identified boat has impeded passage or violated the U.S. Inland Navigation Rules, and the identified boat shall have the burden of proving otherwise. In the case of a complaint by a Vessel Traffic or the Coast Guard, the protest time limit shall be extended up to two days after the conclusion of the regatta. This changes RRS 60.2(a) and 61.3.
- 19.3** A race committee boat may signal a boat to alter course to avoid impeding the passage of commercial vessels by making a sound signal (horn or whistle) and pointing Code Flag V at the boat. The signaled boat shall promptly comply with the signal unless compliance would create an unsafe condition. If a boat fails to comply with such a signal, the race committee shall protest the boat, in which case the International Jury shall assume that the course alteration would not have created an unsafe condition, and the protested boat shall have the burden of proving otherwise.
- 19.4** Boats may not take a penalty under RRS 44 for breaking any part of this SI, and a resulting disqualification shall not be excludable under RRS A2. The StFYC shall cooperate with and provide relevant information to the Coast Guard or other governmental authority regarding investigations of boats impeding ship traffic or violating U.S. Inland Navigation Rules (33 CFR 83).

20. ADVERTISING, BOW STICKERS AND BACKSTAY FLAGS

- 20.1** All boats are required to display Rolex bow stickers, supplied by the organizing authority, to both sides of the hull as indicated by the sticker placement and application instruction sheet, which will be supplied with the bow stickers.
- 20.2** Rolex backstay flags supplied at registration are required to be flown while racing. The backstay flag should be flown from the backstay approximately three feet above the deck when possible. This changes RRS 56.

21. SUPPORT BOATS

- 21.1** Due to limited dock space, support boats will not have access to the StFYC Guest Docks unless assigned dock space by the StFYC Dockmaster.
- 21.2** Support boats shall register at the StFYC Race Office prior to the end of registration on Wednesday Sept. 14th. They must be prepared to declare the name(s) of all boats that they are attached to, the name of the support boat operator, and the telephone number. Support boats will be issued a flag and will be required to leave a \$20 deposit which will be refunded to the representative upon the return of the flag at the end of the regatta.
- 21.3** During racing all support boats must stay clear and outside of race committee boats or boats flying a jury flag or press flag at all rounding marks, start and finish lines except when rendering assistance to a boat in danger either at the boat's request or at the request of the race committee.

22. HAUL OUT RESTRICTIONS

All boats shall not be hauled out during the regatta except with and according to the terms of prior written permission of the race committee.

23. PRIZES

Prizes will be awarded based on participation and division splits. In addition to take-home prizes, the following perpetual trophies will be awarded: St. Francis Perpetual, City of San Francisco Perpetual, Atlantic Perpetual, Keefe-Kilborn Memorial, Richard Rheem Perpetual and Commodore's Cup.

24. DISCLAIMER OF LIABILITY

Competitors participate in the regatta entirely at their own risk. See RRS 4, Decision to Race. The organizing authority does not accept any liability for material damage or personal injury or death sustained in conjunction with or prior to, during, or after the regatta.

25. INSURANCE

Each participating boat shall be insured with valid and adequate third-party liability insurance.

26. BERTHING AND TRAILER STORAGE

- 26.1** Boats may be moored in the SF Marina from Monday, September 12 through Monday, September 19, 2016. When not racing, practicing or in transit, boats shall remain in their assigned berth in the San Francisco Marina unless granted written permission by the race committee.
- 26.2** Boat trailers shall be stored at the direction of the StFYC Dockmaster and registered with a race office representative. Unregistered storage trailers may be ticketed and towed.

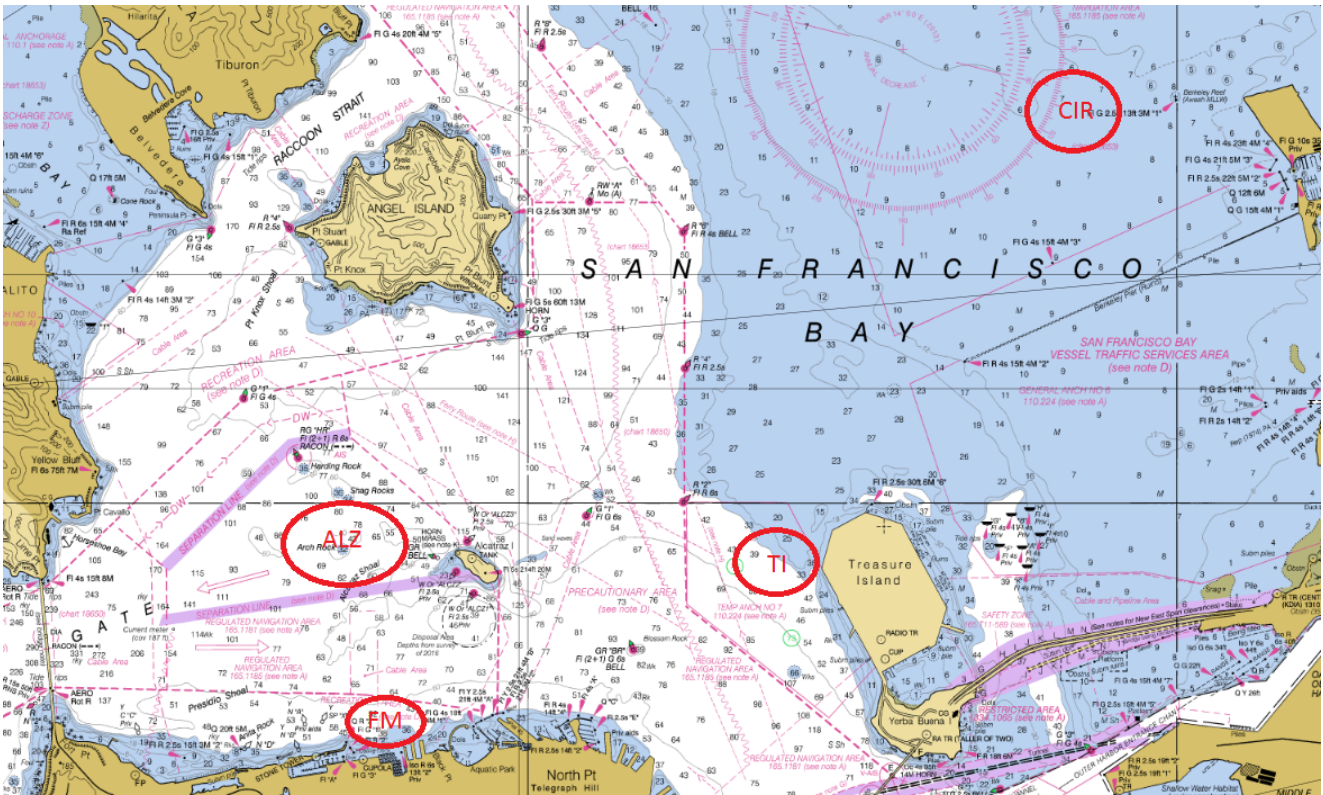
ATTACHMENT A – RACE AREA AND COURSE ASSIGNMENTS

Thursday 9/15			Friday 9/16			Saturday 9/17			Sunday 9/18			
Race #1			Race #3			Race #5			Race #7			
COURSE	"ALZ" (Alcatraz) VHF 71	"TI" (Treasure Island) VHF 69	"CIR" (Berkeley Circle) VHF 72	"ALZ" (Alcatraz) VHF 71	"FM" (Fort Mason) VHF 69	"CIR" (Berkeley Circle) VHF 72	"ALZ" (Alcatraz) VHF 71	"TI" (Treasure Island) VHF 69	"CIR" (Berkeley Circle) VHF 72	"ALZ" (Alcatraz) VHF 71	"TI" (Treasure Island) VHF 69	"CIR" (Berkeley Circle) VHF 72
	ORR B	Multi	J/70	Multi	ORR B	J/70	ORR B	Multi	Multi	Multi	ORR A	J/70
	PHRF Sportboat	ORR A		ORR A	PHRF Sportboat		PHRF Sportboat	ORR A	ORR A	ORR B	California 40	
	C&C 30	California 40		California 40	C&C 30		C&C 30	California 40	California 40	J/120	ORR C	
	Express 37	J/120		J/120	Express 37		Express 37	J/120		PHRF Sportboat	Express 37	
J/105	ORR C		ORR C	J/105		J/105	ORR C	ORR C	C&C 30	J/105		
Race #2			Race #4			Race #6						
COURSE	"ALZ" (Alcatraz) VHF 71	"TI" (Treasure Island) VHF 69	"CIR" (Berkeley Circle) VHF 72	"ALZ" (Alcatraz) VHF 71	"FM" (Fort Mason) VHF 69	"CIR" (Berkeley Circle) VHF 72	"ALZ" (Alcatraz) VHF 71	"TI" (Treasure Island) VHF 69	"CIR" (Berkeley Circle) VHF 72	"ALZ" (Alcatraz) VHF 71	"TI" (Treasure Island) VHF 69	"CIR" (Berkeley Circle) VHF 72
	Multi	ORR B	J/70	ORR B	Multi	J/70	Multi	ORR B	ORR B	Multi	ORR B	J/70
	ORR A	PHRF Sportboat		PHRF Sportboat	ORR A		ORR A	PHRF Sportboat	PHRF Sportboat	ORR A	PHRF Sportboat	
	California 40	C&C 30		C&C 30	California 40		California 40	C&C 30	California 40	California 40	C&C 30	
	J/120	Express 37		Express 37	J/120		Express 37	J/120	Express 37	J/120	Express 37	
ORR C	J/105		J/105	ORR C		ORR C	ORR C	J/105	ORR C	J/105		
Starting Order			Starting Order			Starting Order			Starting Order			
TBD (per SI 1.3)			TBD (per SI 1.3)			TBD (per SI 1.3)			TBD (per SI 1.3)			

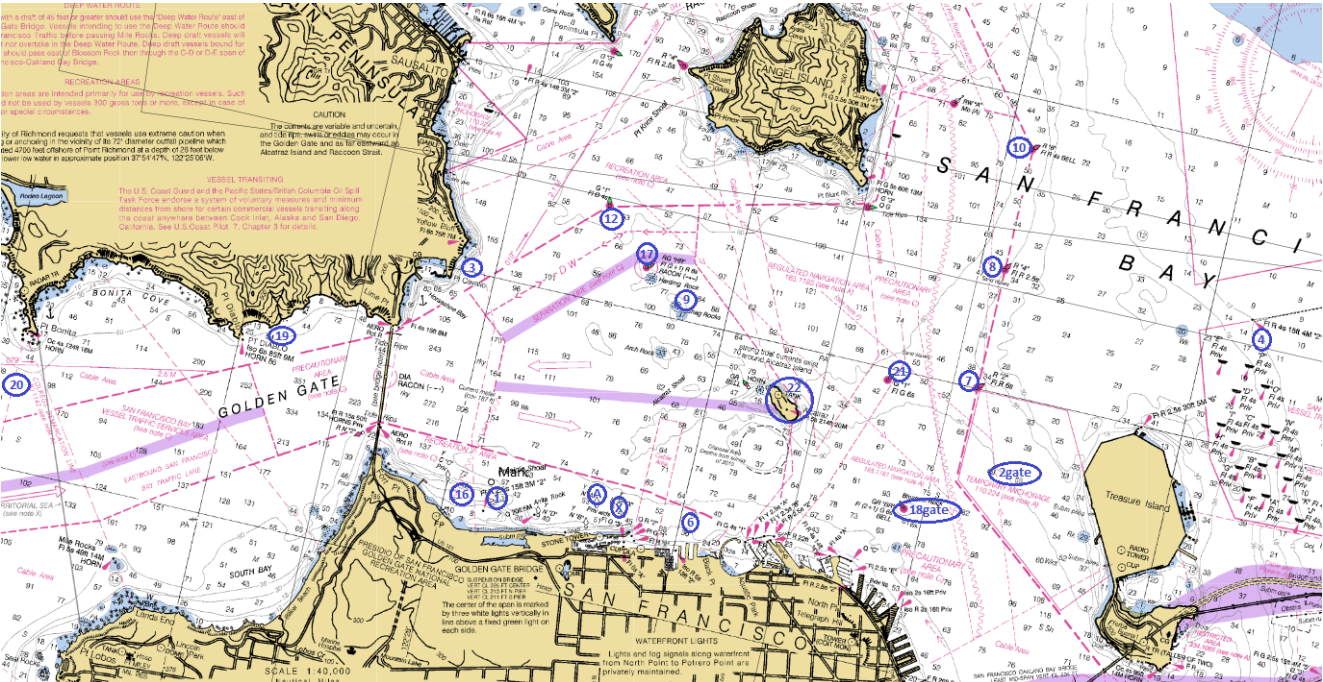
ATTACHMENT B – COURSE AREAS & MARKS CHARTLETS

2016 Rolex Big Boat Series

Start and Finish Areas



Mark Locations



These charts are for visual reference only.

See Attachment D – Descriptions of Marks for complete location information.

ATTACHMENT C – COURSE DESCRIPTIONS
2016 Rolex Big Boat Series

Course Number	Rounding marks and the order in which they are to be rounded												Finish Area	Approx. Distance NM (from Start Area) (see SI 8.3)			
	<p align="center"><i>Continued on next page</i></p> p = round to port s = round to starboard													Treasure Island	Fort Mason	Alcatraz	Berkeley Circle
W-L COURSES WITH PORT ROUNDINGS and DROP MARKS																	
1	Start	Wp	Op	G										UW	Distance TBD		
2	Start	Wp	Op	G	Wp	Op								DW			
3	Start	Wp	Op	G	Wp	Op	G							UW			
4	Start	Wp	Op	G	Wp	Op	G	Wp	Op					DW			
W-L COURSES WITH STARBOARD ROUNDINGS and DROP MARKS																	
5	Start	Ws	Os	G										UW	Distance TBD		
6	Start	Ws	Os	G	Ws	Os								DW			
7	Start	Ws	Os	G	Ws	Os	G							UW			
8	Start	Ws	Os	G	Ws	Os	G	Ws	Os					DW			
W-L COURSES USING both DROP MARKS and FIXED MARKS - ALCATRAZ																	
9	Start	Wp	21p	Wp										DW	~6.5		
10	Start	Wp	21p	3p										DW	~8.2		
11	Start	Wp	21p	Wp	21p	Wp								DW	~10.8		
12	Start	Wp	21p	3p	G	Wp								DW	~10.3		
13	Start	Wp	8p	3p										DW	~9.5		
14	Start	Wp	10s	3p										DW	~10.5		
15	Start	3p	21p	3p										DW	~9.9		
16	Start	3p	21p	3p	G	Wp								DW	~12.0		
17	Start	19p	9p	19p										DW	11.6		
18	Start	19p	21p	3p										DW	12.1		
19	Start	19p	8p	3p										DW	13.7		
20	Start	19p	10s	3p										DW	14.3		
21	Start	19p	10s	19p										DW	16.6		
22	Start	20p	8p	19p										DW	20.4		
23	Start	19p	10s	3p	10s	3p								DW	22.4		
W-L COURSES USING both DROP MARKS and FIXED MARKS - TREASURE ISLAND and FORT MASON																	
24	Start	1p												DW	7.5		
25	Start	16s												DW	8.1		
26	Start	1p	18gate	6p										DW	10.3		
27	Start	16s	18gate	6s										DW	10.9		
28	Start	1p	2gate	6p										DW	11.9		
29	Start	16s	2gate	6s										DW	12.5		
30	Start	16s	18g	16s										DW	14.2	9.1	
31	Start	1p	2gate	1p										DW	14.5	9.5	
32	Start	16s	2gate	16s										DW	15.7	10.7	
33	Start	16s	4s	16s										DW	18.2	13.1	
34	Start	1p	2gate	1p	2gate	6p								DW	18.9		
35	Start	16s	2gate	16s	2gate	6s								DW	20.1		
36	Start	16s	2gate	16s	2gate	16s								DW	23.3	18.3	

ATTACHMENT C – COURSE DESCRIPTIONS
2016 Rolex Big Boat Series

Course Number	Rounding marks and the order in which they are to be rounded													Finish Area	Approx. Distance NM (from Start Area) (see SI 8.3)			
	p = round to port s = round to starboard														Treasure Island	Fort Mason	Alcatraz	Berkeley Circle
BAY TOUR COURSES WITH RACE DECK FINISH - ALCATRAZ, TREASURE ISLAND, FORT MASON and BERKELEY CIRCLE																		
37	Start	1p	1o											RD				6.7
38	Start	16s	21p	1p	1o									RD	10.5	8.0	8.5	12.8
39	Start	16s	21p	19p										RD	13.7	11.2	11.7	15.9
40	Start	16s	8p	19p										RD	15.5	12.9	13.5	17.7
41	Start	16s	17s	18gate	1	1o								RD	11.8	9.3	9.8	14.0
42	Start	16s	17s	2gate	1p	1o								RD	13.1	10.6	11.1	15.3
43	Start	16s	17s	2gate	6p	18gate	1p	1o						RD	15.9	13.3	13.9	
44	Start	16s	17s	2gate	8p	1p	1o							RD	14.8	12.2	12.7	
45	Start	16s	17s	2gate	10s	4s	1p	1o						RD	18.6	16.1	16.6	
46	Start	16s	17s	2gate	10s	4s	6p	18gate	1p	1o				RD	21.4	18.9	19.4	
47	Start	16s	17s	2gate	10s	4s	19p	6p	1p	1o				RD	24.5	22.0	22.5	
48	Start	16s	17s	2gate	8p	3p	Xp	7s	4s	1p	1o			RD	25.4	22.9	23.4	
49	Start	16s	17s	2gate	10s	4s	3p	Xp	8p	1p	1o			RD	27.6	25.1	25.6	
50	Start	16s	17s	2gate	10s	4s	3p	Xp	21p	19p				RD	28.8	26.2	26.7	
51	Start	16s	17s	22p	10s	4s	16s	9p	3p	Xp	21p	1p	1o	RD	27.5	25.0	25.5	
52	Start	16s	9p	19p										RD	11.8	8.6	9.1	
53	Start	16s	9p	3p	Xp	8p	1p	1o						RD	16.9	14.4	14.9	
54	Start	16s	9p	3p	Xp	8p	19p							RD	19.9	17.3	17.9	
55	Start	16s	9p	3p	18gate	8p	1p	1o						RD	17.1	14.5	15.0	
56	Start	16s	9p	3p	18gate	8p	19p							RD	20.0	17.5	18.0	
57	Start	16s	9p	3p	18gate	21p	20p							RD	22.5	20.0	20.5	
58	Start	16s	9p	19p	21p	1p	1o							RD	16.8	13.8	14.3	
59	Start	1p	1o	21p	1p	1o								RD	9.9	7.4	8.0	12.2
60	Start	1p	1o	2gate	1p	18gate	1p	1o						RD	17.0	14.5	15.0	
61	Start	19p												RD	7.8	5.4	5.5	9.6
62	Start	19p	7s	1p	1o									RD	14.1	8.8	11.8	15.9
63	Start	19p	17s	22p	21p	19p								RD	16.5	14.1	14.2	18.3
64	Start	19p	21p	19p										RD	16.1	13.7	13.8	17.9
65	Start	19p	8p	9p	8p	1p	1o							RD	22.2	16.8	18.0	
66	Start	19p	22p	21p	16s	8p	1p	1o						RD	20.9	18.6	18.7	
67	Start	19p	8p	3p	Xp	8p	9p	2gate	1p	1o				RD	28.0	25.6	25.7	
68	Start	20p	7s	3p	Xp	10s	4s	1p	1o					RD	31.1	28.6	28.8	
69	Start	20p	18gate	21p	3p	Xp	8p	9p	2gate	1p	1o			RD	31.8	29.3	29.6	
BAY TOUR COURSES WITH RACE DECK FINISH - ALCATRAZ CIRCLE																		
70	Start	Wp	18gate	1p	1o									RD			~6.8	
71	Start	Wp	6p	18gate	1p	1o								RD			~7.3	
72	Start	Ws	9p	3p	Xp	6p	1p	1o						RD		~8.5	~8.0	
73	Start	Ws	9p	3p	Xp	18gate	1p	1o						RD		~11.1	~10.6	
74	Start	Ws	9p	3p	Xp	6p	16s	17s	18gate	1p	1o			RD		~15.6	~15.1	
75	Start	Ws	17s	22p	8p	3p	2gate	1p	1o					RD		~16.7	~16.7	
76	Start	Wp	7s	3p	6p	21p	1p	1o						RD			~14.6	
77	Start	Wp	22p	8p	3p	21p	4s	1p	1o					RD			~19.6	
78	Start	Wp	21p	3p	Xp	8p	9p	2gate	1p	1o				RD			~20.1	
BAY TOUR COURSES WITH RACE DECK FINISH - BERKELEY CIRCLE																		
79	Start	3p	Xs	1p	1o									RD				9.3
80	Start	3p	9p	1p	1o									RD				9.9
81	Start	3p	18gate	1p	1o									RD				12.8

**ATTACHMENT D – DESCRIPTION OF MARKS
2016 Rolex Big Boat Series**

Mark	Description
A	Outer Yellow sphere "A" approx. 400 yards north of StFYC Race Deck
B	Inner Yellow Sphere "B" (Billingham) approx. 50 yards north of StFYC Race Deck
W	Yellow inflatable set as a windward mark (distance and bearing displayed from the signal boat)
O	Orange inflatable ball set as a windward offset mark to Mark "W"
G	Yellow inflatables set as a leeward gate (initially set approx. 300 yards to windward of the signal boat)
X	Yellow/Blue sphere "X" approx. 400 yards north of Golden Gate YC or an inflatable yellow mark in its place
1	Red inflatable set 0.20 NM at 350°M from FI R 2.5s "2" at Presidio Shoal
1o	Orange inflatable ball set as a windward offset mark to be rounded in the same direction as Mark 1
2gate	Yellow inflatable marks set as a leeward gate set 0.80 NM at 050°M from Green/Red "BR" FI Bell at Blossom Rock
3	Yellow inflatable set approx. 300 yards south of Point Cavallo
4	Yellow inflatable set 0.40 NM at 040°M from Treasure Island North Light FI R 2.5s "6"
6	Yellow Can or yellow inflatable set "M" 0.20NM North of Fort Mason piers
7	Red "2" FI R 6s, 1.05NM West of Northern end of Treasure Island
8	Red "4" FI R 4s Horn, 1.0NM East of Point Blunt
9	Yellow inflatable set 0.33 NM at 115°M from Green/Red "HR" 1 Qk FI R at Harding Rock
10	Red "6" FI R 4s, 1.10nm Northeast of Point Blunt
16	Yellow Can "TB" (Tom Blackaller) 0.45nm East of Fort Point
17	Red/Green "HR" 1 Qk FI R at Harding Rock (1.12NM at 286° from the northern most point on Alcatraz)
18gate	Leeward gate between Green/Red "BR" FI Bell at Blossom Rock, and a Red inflatable set to the North
19	Yellow with Red Stripe Inflatable 0.18NM @ 065 M from Pt. Diablo Light
20	Red/Green FI(2+1) R6s Bell (ocn) 0.60NM SW of Point Bonita
21	Green "1" FI G 6s east of Alcatraz (0.70NM @ 047°M from Alcatraz Light FI 5s 214ft 20M)
22	Alcatraz Island