



**The Ted Hood Regatta**

**HOST: Eastern Yacht Club**

**August 18-20, 2023**

**Marblehead, MA**

**Organizing Authority (OA): Storm Trysail Club**

**The host club is the Eastern Yacht Club (“EYC”, official host); in association with  
the Corinthian Yacht Club and the Boston Yacht Club**

### **SAILING INSTRUCTIONS (SI’s)**

Preamble:

The notation [NP] in a rule of the sailing instructions (SIs) means that a boat may not protest another boat for breaking that rule. This changes RRS 60.1(a).

#### **1. RULES**

- 1.1 The event is governed by the rules as defined in the Racing Rules of Sailing 2021-2024(RRS).
- 1.2 The Race Committee may make changes orally on the water via the appropriate VHF channel.

#### **2. CHANGES TO THE SAILING INSTRUCTIONS**

Any change to the sailing instructions will be posted before 0900 on the day it will take effect, except that any changes to the schedule of races will be posted by 1800 on the day before it will take effect.

#### **3. COMMUNICATIONS WITH COMPETITORS**

3.1 Notices to competitors will be posted on the official notice board located at [www.Yachtscoring.com](http://www.Yachtscoring.com). As a courtesy only, notices may be posted on the glass wall of the Race Office located in the Eastern Yacht Club Sailing Center, and the notice board located near the trophy room at the Corinthian Yacht Club.

3.2 It is the intention of the OA to make a courtesy announcement each morning on VHF 72 for all classes at 1030. This announcement may include the intentions of the Race Committee.

3.3 On the water, the race committee may make courtesy broadcasts to competitors on the VHF channel designated. One-Design Circle VHF Channel 71 PHRF and ORRez Circle VHF Channel 72

3.4 [DP] While racing, except in an emergency, a boat shall not make voice or data transmissions and shall not receive voice or data communication that is not available to all boats.

#### **4. CODE OF CONDUCT**

[DP] Competitors and support persons shall comply with reasonable requests from race officials.

#### **5. SIGNALS MADE ASHORE**

5.1 Signals made ashore will be displayed at the yardarm of the Casey Flagpole at the Eastern Yacht Club. Other clubs may display flags as a courtesy only.

5.2 When flag AP is displayed ashore, '1 minute' is replaced with 'not less than 60 minutes' in Race Signals AP.

#### **6. SCHEDULE**

##### **6.1 Thursday August 17, 2023**

1700 – 1900 Registration and Happy Hour Eastern YC Sailing Center

1900 Skippers Meeting Eastern YC Sailing Center

##### **6.2 Friday August 18, 2023**

0730 – 0930 Registration Eastern YC Sailing Center

1200 First Warning Single for ORRez Class, PHRF Classes 1 & 2, and J/105's only. Multiple races to follow.

1700 Happy Hour and Daily Awards Eastern YC Sailing Center

##### **6.3 Saturday August 19, 2023**

1200 First Warning Single for All cases ORRez, PHRF Class 1, PHRF Class2, PHRF JAM Class 3, J/105, and J/70. Note J/105's will be racing out of the One Design Circle Saturday, and not the Handicap Circle. Multiple races to follow.

1700 Happy Hour and Daily Awards Eastern YC Sailing Center

##### **6.4 Sunday August 20, 2023**

1200 First Warning Single for All cases ORRez, PHRF Class 1, PHRF Class2, PHRF JAM Class 3, J/105, and J/70. Note J/105's will be racing out of the One Design Circle Sunday, and not the Handicap Circle. Multiple races to follow.

1500 No Warning signal after this time.

1700 Happy Hour, Daily and Overall Awards Eastern YC Sailing Center.

## **7. CLASS FLAGS**

7.1 For the One-Design Line, the class insignia will be the class flag.

7.2 For non-one design classes the corresponding numeral pennant and class splits will be posted in Addendum C.

## **8. RACING AREA**

Racing areas are shown in Addendum A.

## **9. COURSES**

9.1 The diagrams in Addendum B show the courses, including the approximate angles between legs, the order in which marks are to be passed, and the side on which each mark is to be left.

9.2 No later than the warning signal, the race committee signal vessel will display the approximate compass bearing to the first mark.

9.3 If a gate mark is missing, the remaining mark is to be rounded to port.

9.4 A green flag displayed no later than the warning signal means 'Mark 1 for the class about to start will be a green tetrahedron'.

9.5 A pink flag displayed no later than the warning signal means 'Mark 1 for the class about to start will be a pink tetrahedron'.

## **10. MARKS**

10.1 Start and finish marks will be green tetrahedrons.

10.2 Original rounding marks for the One Design Line will be yellow Tetrahedrons. New marks will be pink tetrahedrons. If an original mark was signaled to be green, a new mark will be a red tetrahedron with a red/white/blue band.

10.3 For the PHRF and ORReZ Line original marks will be orange tetrahedrons. New marks will be pink tetrahedrons. If an original mark was signaled to be green, a new mark will be a yellow tetrahedron with a red/white/blue band.

## **11. THE START**

11.1 Races will be started using RRS 26.

11.2 The starting line is between a staff displaying an orange flag on the signal vessel at the starboard end and the course side of the port-end starting mark.

11.3 If any part of a boat's hull is on the course side of the starting line at her starting signal and she is identified, as a courtesy the race committee will attempt to hail her sail number on the designated VHF channel. The timeliness of the hail, failure of her to hear such a hail, or the order in which boats are hailed shall not be grounds for a request for redress. This changes RRS 62.1(a).

## **12. CHANGE OF THE NEXT LEG OF THE COURSE**

To change the next leg of the course, the race committee will lay a new mark (or move the finishing line) and remove the original mark as soon as practicable. When in a subsequent change a new mark is replaced, it will be replaced by an original mark.

## **13. THE FINISH**

The finishing line is between a staff displaying a blue flag on the finishing mark at the starboard end and the course side of the port end finishing mark.

## **14. TIME LIMITS AND FINISHING WINDOW**

14.1 The time limit for the first in each class to finish is 90 minutes.

14.2 The Finishing Window is the time for boats to finish after the first boat sails the course and finishes. Boats failing to finish within the Finishing Window, and not subsequently retiring, being penalized, or given redress, will be scored TLE without a hearing. The boats being scored TLE will be scored one more than the points scored by the last boat that finishes within the Finishing Window.

14.3 The Finishing Window will be 30 minutes.

## **15. HEARING REQUESTS**

15.1 For each line, the protest time limit is 60 minutes after the signal vessel for that line docked. The time limit will be posted on the official notice board at

<https://yachtscoring.com/emenu.cfm?eID=16146>

15.2 Hearing request forms are available at YachtScoring link in 15.1 and at the protest desk located in the Sailing Center, near the Race Committee Office.

15.3 Notices will be posted no later than 30 minutes after the protest time limit to inform competitors of hearings in which they are parties or named as witnesses. Hearing will be held at the Eastern Yacht Club, beginning at the time posted.

## **16. SAFETY REGULATIONS**

16.1 [NP] A boat shall check in before her first race of each day by hailing the race committee signal vessel with her sail number and the number of souls on board. A boat failing to check in will receive a 20% scoring penalty as calculated in RRS 44.3 for each race in which a breach occurs, without a hearing. This changes RRS 63.1 and A5.

16.2 [DP] A boat that retires from a race shall notify the race committee at the first reasonable opportunity by VHF radio or hail. If this is not practicable before leaving the racing area, the boat shall call the Eastern Yacht Club (781-631-1400) after berthing.

16.3 Boats requiring assistance shall contact the signal vessel, giving her sail number, fleet, location and the nature of the emergency, including the nature of any injuries.

## **17. OFFICIAL VESSELS**

17.1 The signal vessel will display a blue race committee flag.

17.2 Other race committee vessels will display a yellow race committee flag.

17.3 The judge vessel will display a 'JUDGE' flag.

### **ADDENDUM A**

Distance and Bearing to racing Areas

Below are the approximate distances and compass bearing to each race line.

Center of Red Line: One Design

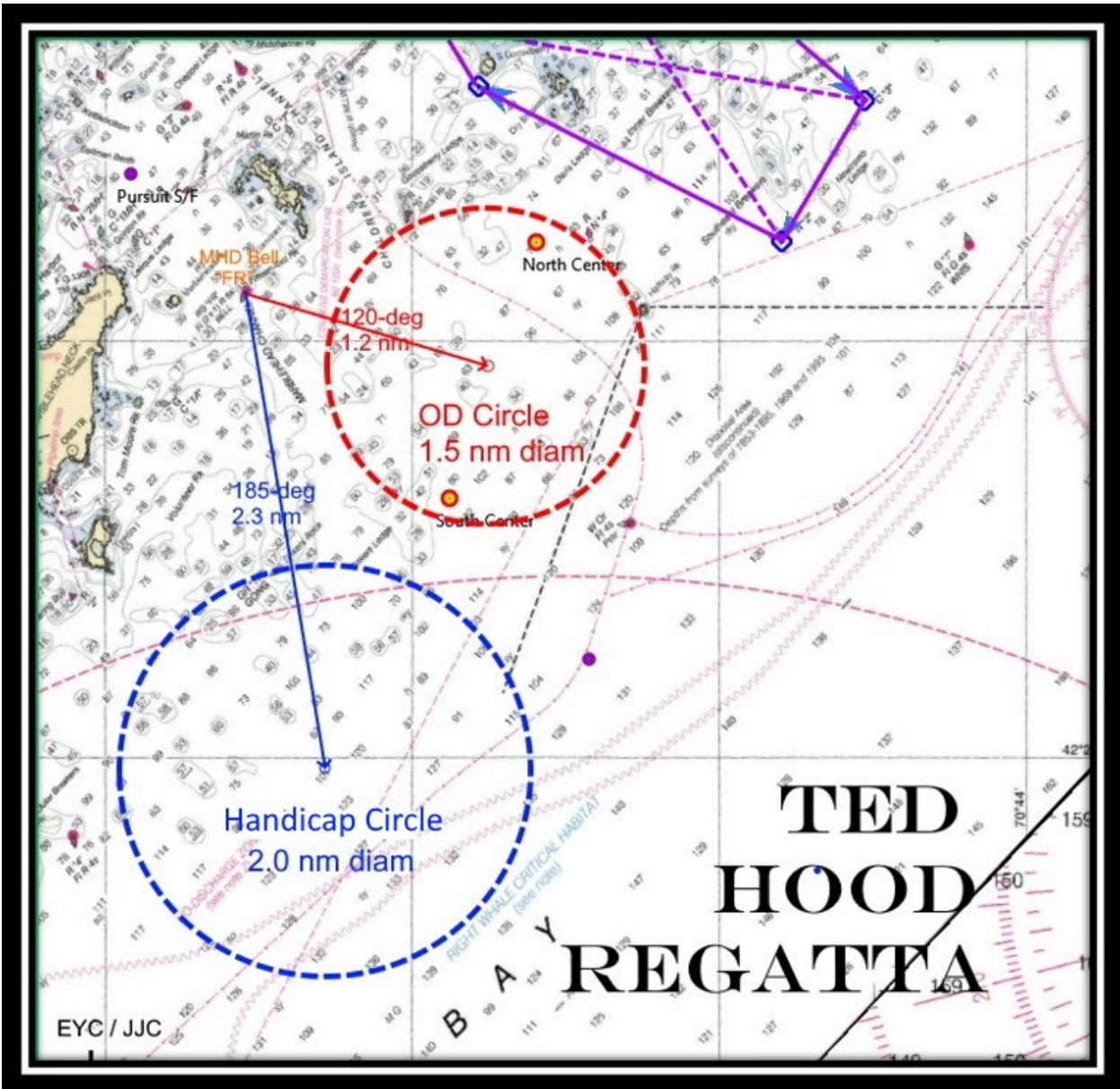
1.2 nm at a compass bearing of 120-deg magnetic from Marblehead Bell

RGRFL (2+1) R 6S BELL

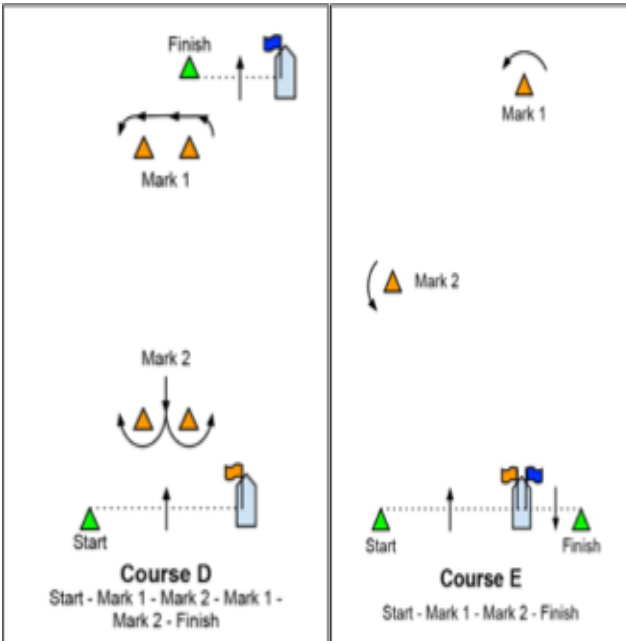
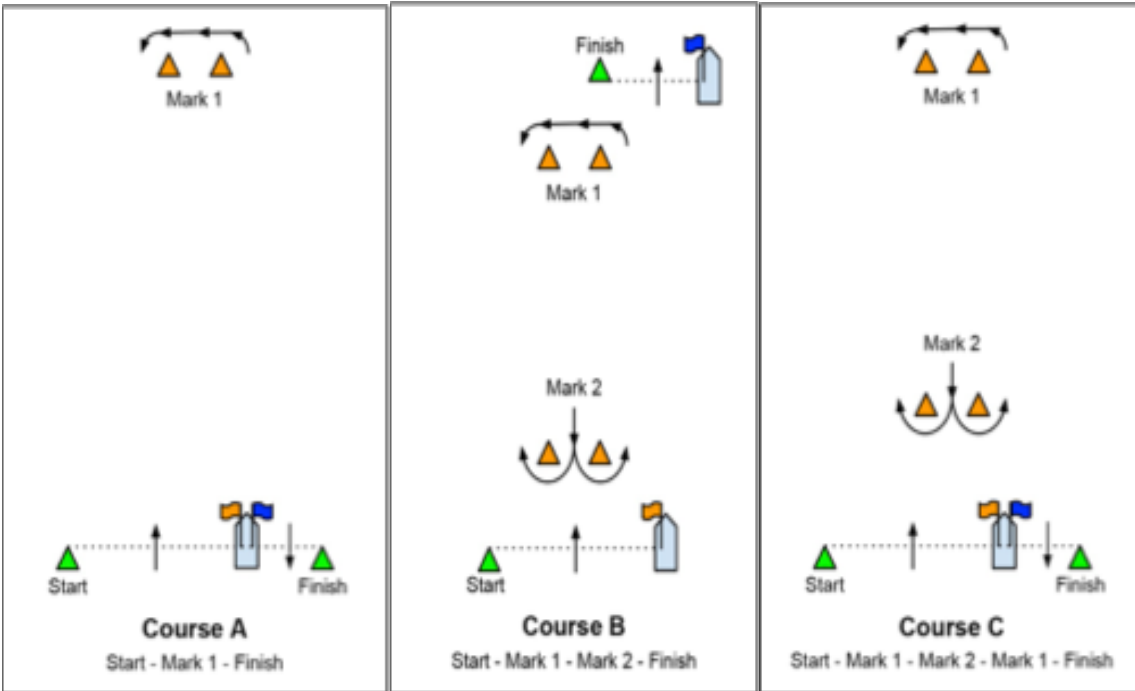
Center of Blue Line: PHRF and ORRez

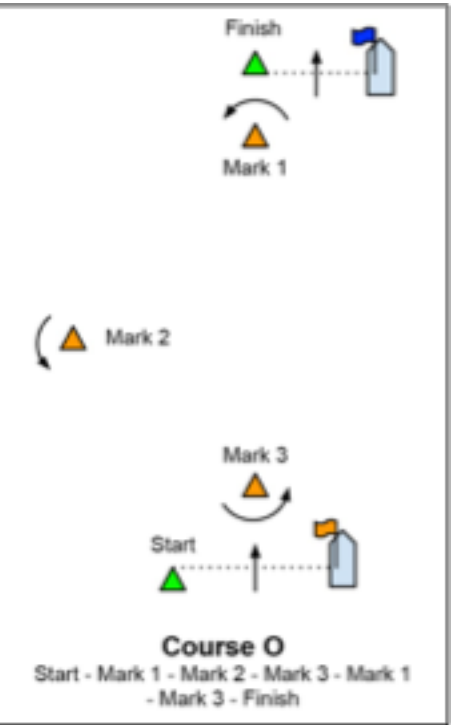
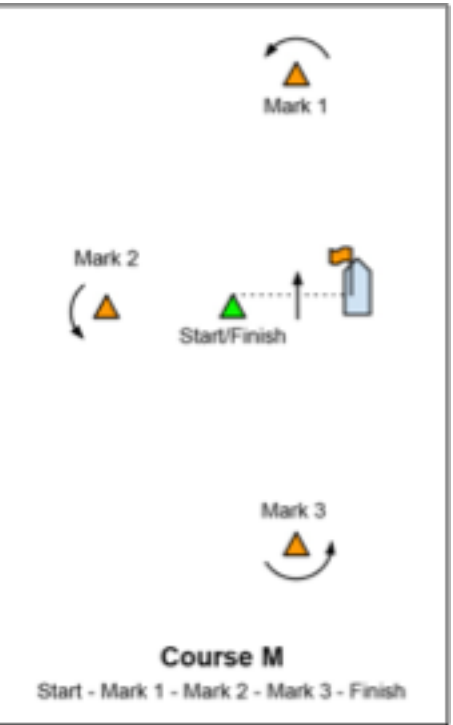
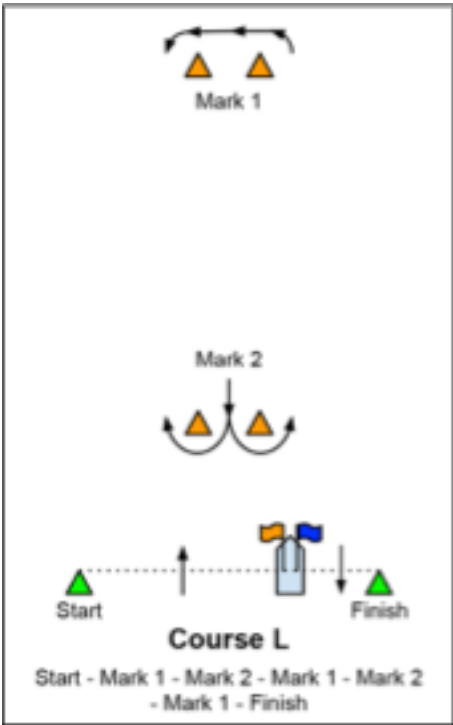
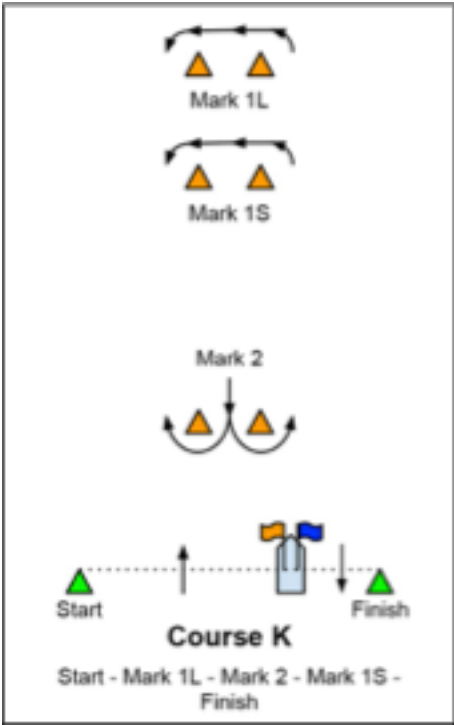
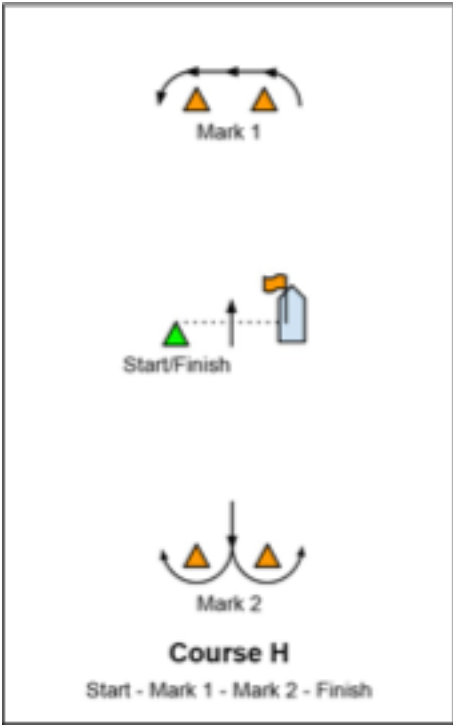
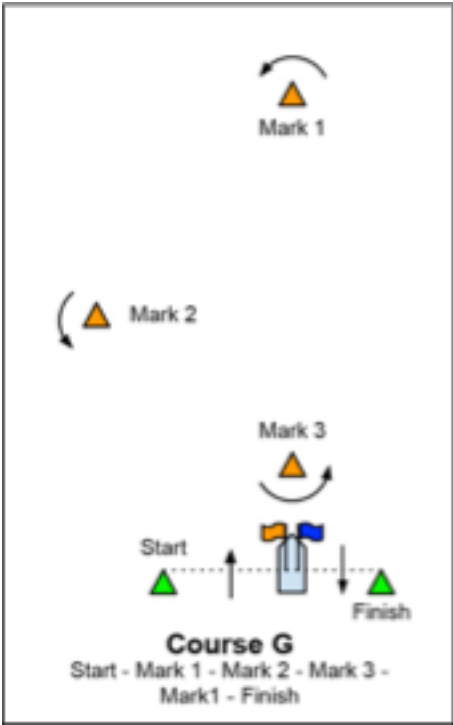
2.3 nm at a compass bearing of 185-deg magnetic from Marblehead Bell

RGRFL (2+1) R 6S BELL



# ADDENDUM B - COURSES





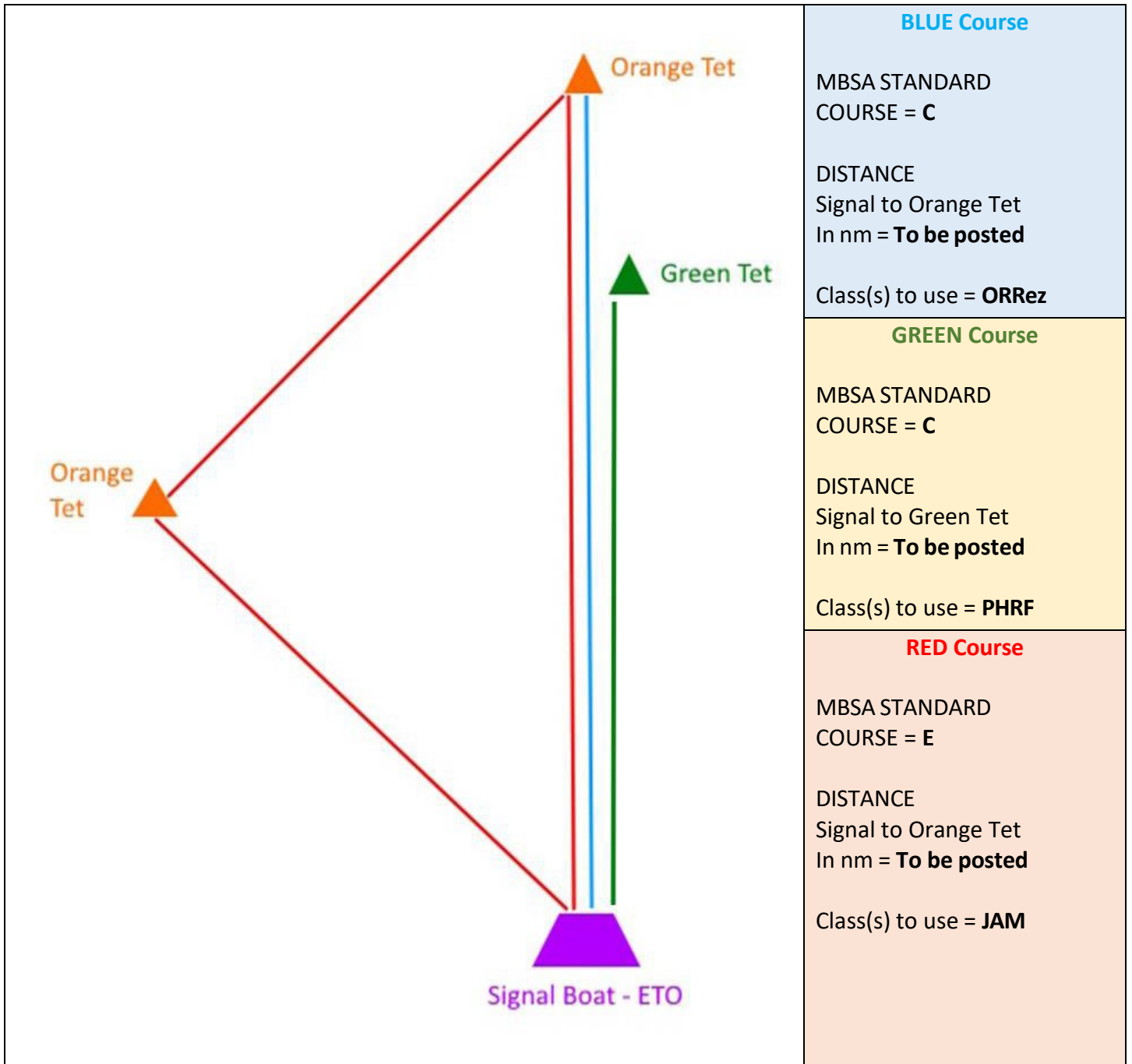


ADDENDUM B, CONT.

**Race Courses for the HANDICAP**

**LINE**

**The TED HOOD REGATTA**



CHANGE of COURSE Marks if needed

First change mark for 'Orange Mark 1' will be a Pink tetrahedron. First change mark for 'Green Mark 1' will be a Yellow tetrahedron

## ADDENDUM C

### Handicap Racing Class Flags

Division	Class	Class Flag
<b>ORRez-ToT-SPIN</b>	<b>Class 1</b>	<b>Numeral Pennant 1</b>
<b>PHRF-ToT-SPIN</b>	<b>Class 1</b>	<b>Numeral Pennant 1</b>
<b>PHRF-ToT-SPIN</b>	<b>Class 2</b>	<b>Numeral Pennant 2</b>
<b>PHRF-ToT-JAM</b>	<b>Class 3</b>	<b>Numeral Pennant 3</b>

Class Splits are contained in the Scratch sheet which can be found on [www.yachtscoring.com](http://www.yachtscoring.com)