



International Lightning Class Association 2022 Women's – Junior's – Master's (WJM's) North American Championship



**Metedeconk River Yacht Club
Brick Township, NJ – USA**

August 1-4, 2023

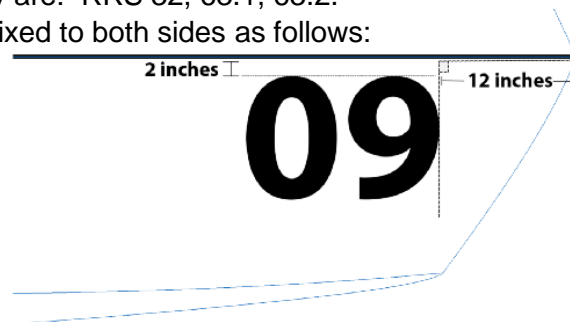
<https://metedeconkriveryc.org/>

SAILING INSTRUCTIONS (SIs) (version 07/31)

The notation '[DP]' in a rule means the Protest Jury may award a penalty other than disqualification. The notation '[NP]' in a rule means that a boat may not protest another boat for breaking that rule. This is added to RRS 60.1(a).

1 RULES

- 1.1 The event will be governed by the *rules* as defined in *The Racing Rules of Sailing* (RRS), the International Lightning Class Association (ILCA) By-Laws and the Document Governing All Sanctioned ILCA Championships (Document Governing).
- 1.2 The only US Sailing prescriptions that shall apply are: RRS 32, 63.1, 63.2.
- 1.3 [DP] [NP] Bow numbers, if furnished, shall be affixed to both sides as follows:



2 CHANGES TO SAILING INSTRUCTIONS

Any change to the sailing instructions will be posted before 0900 on the day it will take effect, except that any change to the schedule of races will be posted by 2000 on the day before it will take effect.

3 COMMUNICATIONS WITH COMPETITORS

3.1 Notices to competitors will be posted only on the online Official Notice Board at:

<https://www.yachtscore.com/emenu.cfm?eID=16057> ...or...



- 3.2 [NP] Boats are encouraged to carry a working VHF.
- 3.3 On the water, RC intends to monitor and communicate with competitors on VHF 06.
- 3.4 [DP] From the first warning signal until the end of the last race of the day, except in an emergency, a boat shall not make voice or data transmissions and shall not receive voice or data communication that is not available to all boats.

4 [DP] [NP] CODE OF CONDUCT

Competitors and support persons shall comply with reasonable requests from race officials.

5 SIGNALS MADE ASHORE

- 5.1 Signals made ashore will be displayed on the MRYC flagpole.
- 5.2 When flag AP is displayed ashore, '1 minute' is replaced with 'not less than 60 minutes' in Race Signals AP.

6 SCHEDULE OF RACES

Day	Event	Time
Tuesday – Aug 1	Practice Race – warning signal	1500
Wednesday – Aug 2	First warning signal	1100
Thursday – Aug 3	First warning signal	1100
Friday – Aug 4	First warning signal	1100
	No Warning Signal After	1500

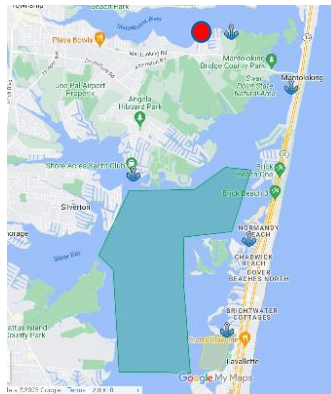
7 CLASS FLAGS

7.1 Women's - solid pink, Junior's - solid green, Master's - solid grey

7.2 [DP] [NP] If supplied by the OA, boats shall display colored streamers from the backstay to signify their fleet.

8 RACING AREA

MRYC is located at the red dot and primary racing will be in the vicinity of the green shaded area.



9 COURSES

9.1 The diagrams in SI Attachment #1 show the courses including the approximate angles between legs, the order in which marks are to be passed and the side on which each mark is to be left.

9.2 Prior to the warning signal, RC will display the course to be sailed and approximate bearing to the first mark.

9.3 If RC displays flag C with multiple sounds before a warning signal, the first mark of the course will be the mark 1 change mark.

9.4 If a leeward gate mark is missing or out of place, boats shall round the remaining mark to port.

10 MARKS

Mark	Original mark description	Change mark description
1	Orange cylinder	Yellow tomato
1a (offset)	Orange ball	(none)
2s, 2p (leeward gate)	Orange tomato	original mark
Starting pin, if used	Yellow cylinder	
Finishing pin	White danbuoy with blue flag	original mark

11 THE START

11.1 Races will be started using RRS 26.

11.2 The starting line is between RC vessels displaying orange flags. If the port end RC vessel is not on station, it will be replaced by a starting pin.

11.3 For the Master's fleet only, the RC may set a buoy as a mid-line guide near the middle of the starting line and this is neither a starting mark nor a mark of the course.

11.4 [DP] [NP] Boats whose warning signal has not been made shall avoid the starting area during the starting sequence for other races.

11.5 If any part of a boat's hull is on the course side of the starting line at her starting signal and she is identified, RC will attempt to hail her bow or sail number. Failure to hail her number, failure of her to hear such a hail or the order in which boats are hailed will not be grounds for a redress for request. This change is added to RRS 62.1(a).

11.6 A boat that has not met the definition of *start* within 4 minutes after her starting signal will be scored Did Not Start (DNS) without a hearing. This change is added to RRS A5.1 and A5.2.

12 CHANGE OF THE NEXT LEG OF THE COURSE

- 12.1 RC may, without signals, make minor adjustments to change the direction of a leg, or the length of leg or adjust the angle or width of the leeward gate, provided that no boat is sailing to the mark.
- 12.2 When signaled in accordance with RRS 33, RC will lay a new mark without an offset mark (or move the finishing line) and remove the original mark as soon as practicable. When in a subsequent change a new mark is replaced, it will be replaced by an original mark.

13 THE FINISH

- 13.1 The finishing line is between a staff displaying a blue flag on the RC finish vessel and the course side of a nearby finish mark.
- 13.2 Flag A displayed while boats are finishing means "no more racing today".

14 PENALTY SYSTEM

RRS Appendix T (Arbitration) shall apply.

15 TIME LIMITS AND TARGET TIMES

- 15.1 The time limit for the first boat to finish in each fleet is 90 minutes.
- 15.2 The target time for races is 45-60 minutes. Failure to meet the target times will not be grounds for redress. This is added to RRS 62.1(a).
- 15.3 The finishing window is 30 minutes after the first boat sails the course and finishes. Boats failing to finish within the finishing window, and not subsequently retiring, penalized, or given redress, will be scored Time Limit Expired (TLE) without a hearing. A boat scored TLE shall be scored points for the finishing place two more than the points scored by the last boat that finished within the finishing window but not worse than DNF. This is added to RRS 35, A5.1, A5.2 and A10.

16 HEARING REQUESTS

- 16.1 The protest time limit is 60 minutes after the RC signal vessel docks or the RC signals no more racing today on shore, whichever is later. The time will be posted on the online official notice board.
- 16.2 Hearing request forms are available on the first floor of the club house.
- 16.3 Notices will be posted no later than 30 minutes after the protest time limit to inform competitors of hearings in which they are parties. Hearings will be held in the Founders' Room which is located on the first floor of the club house or other designated location as posted on the Official Notice Board.

17 SCORING

- 17.1 The low point system of RRS Appendix A will apply in accordance with the Document Governing, available at <https://www.lightningclass.org/docs.ashx?id=328142>.
- 17.2 When fewer than six (6) races have been completed, a boat's series score will be the total of her race scores. This changes RRS A2.
- 17.3 When six (6) or more races have been completed, a boat's series score will be the total of her race scores excluding her worst score.
- 17.4 A maximum of nine (9) races is scheduled for the Women's and Junior's fleets and six (6) races for the Master's fleet. One (1) race is required to be completed to constitute a series.

18 [DP] [NP] SAFETY REGULATIONS

- 18.1 Before the first race of each day, boats shall sail by the stern of the RC Signal vessel and check-in.
- 18.2 A boat that retires from a race or leaves the racing area shall notify RC at the first reasonable opportunity.

19 [DP] [NP] REPLACEMENT OF CREW OR EQUIPMENT

- 19.1 Substitution of competitors is not allowed without prior written approval of a Race Official.
- 19.2 Substitution of damaged or lost measured equipment is not allowed unless authorized in writing by the OA, Chief Judge or the PRO. Requests for substitution shall be made at the first reasonable opportunity, which may be after the race.

20 [DP] [NP] EQUIPMENT AND MEASUREMENT CHECKS

20.1 A boat or equipment may be inspected at any time for compliance with the ILCA Class rules, notice of race and sailing instructions.

20.2 When instructed by a Race Official on the water, a boat shall proceed to a designated area for inspection.

21 OFFICIAL VESSELS

Judge vessels may display a “Judge” or “J” flag.

22 [DP] [NP] BERTHING

If assigned, boats shall be kept in their places while in the dry sail area.

23 PRIZES

23.1 Prizes will be awarded to the top placing skippers and crews in each of the Women’s, Junior’s and Master’s fleets commensurate with the number of entrants.

23.2 Perpetual Trophies will be presented to the North American Champion in the Women’s, Junior’s and Master’s fleets.

23.3 The highest-placing Master’s skipper who has reached his or her 65th birthday by December 31, 2023 shall win the Grand Master Trophy.

23.4 The highest-placing Master’s skipper who has reached his or her 75th birthday by December 31, 2023 shall win the Great Grand Master Trophy.

23.5 Daily awards will be presented to the winner of each race (excluding the practice race) for each fleet.

24 RISK STATEMENT

RRS 3 states: ‘The responsibility for a boat’s decision to participate in a race or to continue to race is hers alone.’ By participating in this event each competitor agrees and acknowledges that sailing is a potentially dangerous activity with inherent risks. These risks include strong winds and rough seas, sudden changes in weather, failure of equipment, boat handling errors, poor seamanship by other boats, loss of balance on an unstable platform and fatigue resulting in increased risk of injury.

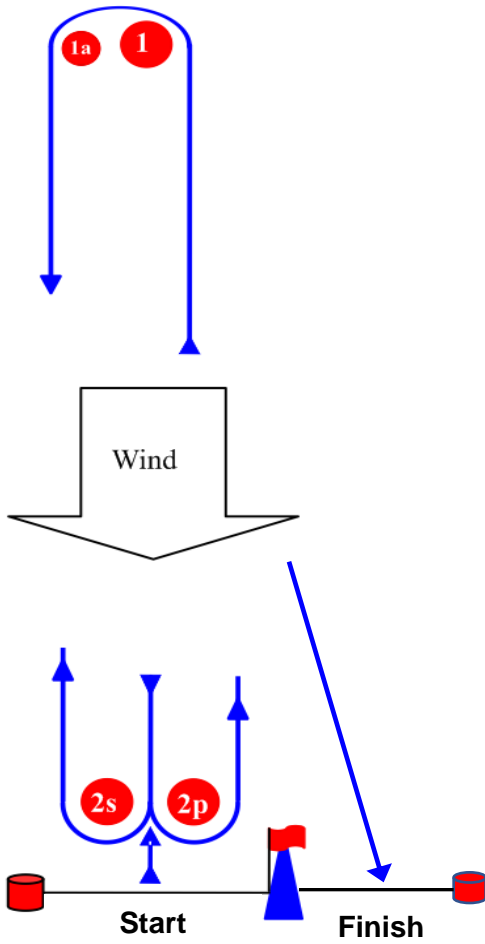
Inherent in the sport of sailing is the risk of permanent, catastrophic injury or death by drowning, trauma, hypothermia or other causes.

25 EVENT CONTACTS

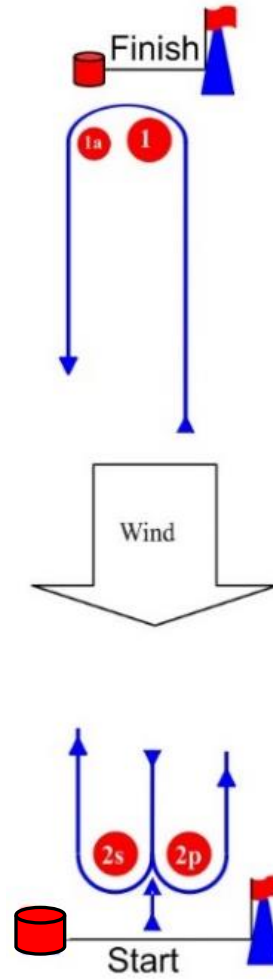
Regatta Chair – Johanna Schon	732-233-9641	rischon2013@gmail.com
Lightning Class – Laura Jeffers	727-215-2579	office@lightningclass.org
NAs Vice President – Josh Goldman	917-859-7764	joshua.goldman@avisonyoung.com
Chief Judge – Jim Walsh	732-995-9446	networksupport@cgschools.org
PRO – Chip Till	843-556-6554	chiptill5351@gmail.com

SI Attachment #1 - Courses

(not to scale, for diagram purposes only, actual marks may be different than pictured)



Course	Mark Rounding Order
4	Start-1-1a-2s/2p-1-1a-Finish



Course	Mark Rounding Order
5	Start-1-1a-2s/2p-1-1a-2s/2p-Finish