



# Sail Newport 2023 Newport Regatta

July 08 - 09, 2023



## Sailing Instructions

### 1. RULES

- 1.1. The 2023 Newport Regatta will be governed by the *rules* as defined in the Racing Rules of Sailing.
- 1.2. Safety Equipment Requirements:
  - 1.2.1 Addendum 1 – US Safety Equipment Requirements (USSER)
    - All boats shall minimally comply with the US Nearshore section of the USSER and shall comply with their class rules, where applicable.
    - USSER 2.4.2, 2.4.3, and USSER 2.4.4.1 through 2.4.9 regarding Hull and Structure: Lifelines shall apply, except that boats not normally rigged with lifelines are exempt from these requirements. Rule 40.1 shall apply to exempt boats *except 12 Metres* and their crew shall wear approved PFDs at all times while racing.
    - In the event of a conflict between these Requirements and applicable class rules, the class rules shall apply.
- 1.3. The current Class Rules for all invited classes shall apply, except as noted in these sailing instructions.

### 2. NOTICES TO COMPETITORS, ANNOUNCEMENTS, VHF CHANNELS

- 2.1. Notices to competitors will be posted on the Official Notice Board located on the South Deck of the Sail Newport Building.
- 2.2. Any change to the sailing instructions will be posted before 0900 on the day it will take effect, except in the case of a postponement ashore. In the case of a postponement ashore, a change to the sailing instructions may be posted up to 15 minutes before the lowering of ‘AP’. Any change to the schedule of races will be posted by 2000 on the day before it will take effect. Flag “Lima” will be flown to signify such posting.
- 2.3. Except in the case of a postponement ashore, the Race Committee will endeavor to announce the rendezvous locations as described in SI 4 at 0900 over each class’ respective VHF channel as described in SI 2.4. In the case of a postponement ashore, the RC will announce the rendezvous locations 15 minutes prior to the lowering of AP. The failure to make this announcement or for a boat to hear this announcement will not be grounds for a boat to request redress. This changes RRS 62.1(a).
- 2.4. VHF Channels:

Circle One	79A
Circle Two	73

### 3 SIGNALS MADE ASHORE

- 3.1 Signal flags will be displayed from the official flagpole on the East side of the Sail Newport building at 72 Fort Adams Drive.
- 3.2 When code flag “AP” is displayed ashore, “1 minute” is replaced with “not less than 60 minutes”. When a numeral pennant is displayed beneath code flag “AP,” the postponement is applicable to that numbered circle only. This changes Race Signal “AP.”

Newport Regatta Partners



3.3 Signals designating the rendezvous locations for both circles will be displayed at 0900 each day from the Yardarm on the East side of the Sail Newport building by displaying the numeral pennant for the circle number above the code flag for the rendezvous location. Rendezvous locations will also be announced on each Circle's VHF Channel. In the case of a postponement ashore, the rendezvous locations will be announced 15 minutes prior to the AP being lowered.

**4) RENDEZVOUS LOCATIONS:** Rendezvous locations are described below and shown in Addendum A-*Narragansett Bay*:

- Area "A"- Between Rose and Goat Island
- Area "B"- In the vicinity of Potter Cove and Gould Island
- Area "C"- Between Halfway Rock and Gould Island
- Area "D"- In the vicinity of G '7' QG off Quonset Point

*Rhode Island Sound*:

- Area "E"- .08 nautical mile ESE (100°mag) from R '2' QR Whistle marking Brenton Reef
- Area "F"- 2.5 nautical miles ESE (120°mag) from R '2' QR Whistle marking Brenton Reef

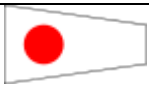
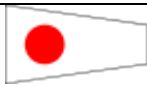


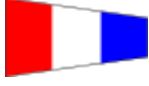
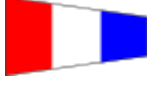

**5) SCHEDULE**

5.1 It is the intent of the Race Committee and Organizing authority to sail as many races as practical each day. The 12 Metres will only sail 2 races per day.

5.2 All divisions/classes will race Saturday & Sunday

<b>Friday, July 7</b>	All Day	Boats may arrive at Sail Newport Alofsin Docks and dinghy field behind 60 Fort Adams Drive
	1630-1930	Mandatory Check in (one person per boat) at 72 Fort Adams Drive
<b>Saturday, July 8</b>	0800-0930	Mandatory Check in (continued)
	1100	First Warning Signal, All Circles
	1630-2030	After Racing Social at Sail Newport
<b>Saturday, July 8</b>	1100	First Warning Signal, All Circles
	1500	No Warning Signal after this time
	1630-2030	After Racing Awards w/Bar Service at Sail Newport

**6) CLASSES, FLAGS AND CIRCLES**

Circle One		Circle Two	
<i>IC 37</i>		<i>F18</i>	
<i>12 Metre Modern</i>		<i>VX ONE</i>	
<i>12 Metre Traditional/Vintage</i>		<i>505</i>	
		<i>Thistle</i>	

Newport Regatta Partners



## 7) CHECK IN AND RETIREMENT

- 7.1 Prior to the first warning signal each day, each boat shall check in with the Race Committee signal boat by passing by the stern of the signal vessel and announcing their sail number.
- 7.2 Boats retiring shall inform the Race Committee on their circle VHF channel or by calling (401) 846-1983.

## 8) COURSES AND MARKS

- 8.1. Courses and marks are described and shown in Addendum B.

## 9) THE START

- 9.1 The starting line will be between a staff displaying an orange flag on the Race Committee signal vessel and either a staff displaying an orange flag or an inflatable mark on the port-end of the Race Committee vessel as described in Addendum B- Courses and Marks.
- 9.2 Boats whose warning signal has not been made shall keep clear of the starting area from the time of the course signals for the first start in the sequence until the warning signal for their class.
- 9.3 The Race Committee will endeavor to hail boats observed to be OCS at the start over their respective circle VHF channel. Failure to hail, the timing or order of any such hails, will not be grounds for a boat to request redress. This changes RRS 62.1(a).

## 10) CHANGE OF COURSE

- 10.1 To change the next leg of the course, the Race Committee will lay a new mark or move the existing mark. When in a subsequent change a new mark is replaced, it will be replaced by an original mark.
- 10.2 The Race Committee may change the course by up to five degrees in bearing and/or 0.2 nm in length without a signal or change of mark color. This changes RRS 33.
- 10.3 In addition to the requirements in RRS 33, the Race Committee will attempt to announce any course change on their respective circle VHF channel. Failure to make such an announcement shall not be grounds for a boat to request redress. This changes RRS 62.1(a).

## 11) THE FINISH

- 11.1 The finishing line will be between a staff displaying a blue flag on the Race Committee signal boat and the course side of the finishing mark as described in the Addendum B- Courses and Marks.
- 11.2 For Course 'W', with odd numbered legs, the finish line will be located to windward of the windward mark.
- 11.3 For Course 'W', with even numbered legs, the finish line will be located to leeward of the leeward mark and will be on the opposite side of the Race Committee signal boat as the starting mark. Diagrams in Addendum B- Courses and Marks.

## 12 ) PENALTY SYSTEM

- 12.1 For all classes, RRS 44.1 is changed so that the Two-Turns Penalty is replaced by the One-Turn Penalty
- 12.2 12 Metres only: In the event that a crew member falls overboard and is no longer connected to the yacht, she shall:
- 12.2.1 Retire from the race
- 12.2.2 Notify the Race Committee on the fleet VHF channel that she has a man overboard.
- 12.2.3 Her score in the case shall be equal to the number of starters for that race without a hearing. The scoring abbreviation will be MOB. This changes RRS 63.1, A4, and A5.

Newport Regatta Partners



### **13 TIME LIMIT**

13.1 The time limit for the first boat to sail the course and finish is two hours. Yachts failing to finish within 30 minutes after the first boat sails the course and finishes will be scored Time Limit Expired (TLE) and scored points as described in SI 15.4. This changes RRS 35, A4 and A5.

### **14 PROTESTS AND REQUESTS FOR REDRESS**

14.1 Protests shall be submitted to the Jury Secretary located on the top floor of Sail Newport within the protest time limit.

14.2 The protest time limit is one hour after the Race Committee signal boat has docked for that circle.

14.3 Hearing times will be posted on the Official Notice Board as soon as possible.

### **15 SCORING**

15.1 The Low Point Scoring System as described in Appendix A shall apply.

15.2 One race shall constitute a series.

15.3 When 6 or more races have been completed, each boats series score shall be the total of her scores excluding her worst score.

15.4 Boats still racing after the finishing window expires will be assigned a score equal to one place more than the place of the last boat to finish within the finishing window.

### **16 PRIZES**

16.1 Trophies will be awarded to the top 3 finishers in each class.

### **17 WAIVER AND RELEASE OF LIABILITY**

17.1 Sailing is an activity that carries with it an inherent risk of damage and injury. Competitors participate in this regatta entirely at their own risk and are reminded to pay special attention to rule 4, Decision to Race. The race organizers, including the OA, Race Committee, Protest Committee, the State of Rhode Island, sponsors, volunteers, or any other affiliated organization or official, will not be responsible for damage to any boat or other property or the injury to any competitor, including death, sustained as a result of practice for or participation in this event on the water or ashore. By participating in this event, each competitor agrees to release the race organizers from any and all liability associated with such competitor's participation in this event to the fullest extent permitted by law.

17.2 As a condition of entry, all skippers and crew must complete the Waiver of Liability Form which is located at <https://www.yachtscoring.com/emenu.cfm?eID=14968>

### **18 FURTHER INFORMATION**

Gary Knapp- *Regatta Director*

516-641-6217

Gary.Knapp@sailnewport.org

————— Newport Regatta Partners —————



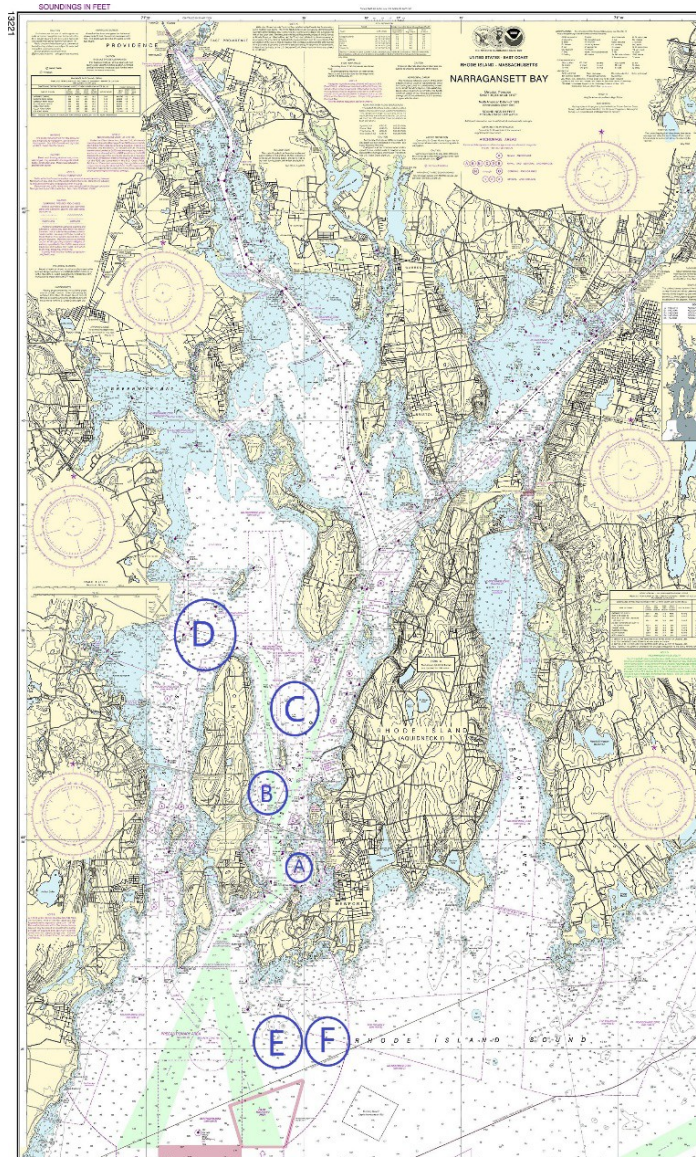


# Sail Newport 2023 Newport Regatta

July 08 - 09, 2023



## ADDENDUM A- RENDEZVOUS LOCATIONS



Newport Regatta Partners





# Sail Newport 2023 Newport Regatta

July 08 - 09, 2023



## ADDENDUM B- COURSES AND MARKS

### B1. Course Descriptions

W2	Start-1-1A-Finish
W3	Start-1-1A-2p/2s-Finish
W4	Start-1-1A-2p/2s-1-1A-Finish
W5	Start-1-1A-2p/2s-1-1A-2p/2s-Finish

**B1.2.** In the event Mark 1A is not in place the boats shall round Mark 1 to port.

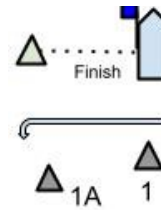
**B1.3.** In the event that the Gate is not in place, boats shall round the existing leeward mark to port.

### B2. Course Diagrams

Course W- Even # of Legs



Course W- Odd # of Legs



### B.3 Marks

Marks will be as follows:

Circle	Original Marks	Long Windward Mark	Starting Mark	Finishing Mark	Change Mark
Circle One	Orange	Orange	Pin Boat w/ Orange Flag	Yellow	Original Marks will be moved
Circle Two	Orange	Orange	Yellow	Pink	Yellow

Newport Regatta Partners



#### B4. Limiting Mark



For the IC 37 Fleet only: The Race Committee may set a yellow inflatable limit mark approximately 6-8 boat lengths to leeward of the windward mark.

- a) The limit mark shall be left to port on both the upwind and the downwind legs.
- b) In the event of a change of course to the windward mark after the first windward mark rounding in that race, the limit mark will not be set.
- c) The location of the limit mark or the failure of the Race Committee to set the limit mark shall not be grounds for a boat to request redress. This changes RRS 62.1(a).
- d) The Race Committee will display flag “Third Substitute” if the limit mark will be set.

#### B5. Long Windward Mark



B 5.1 For all “W” courses, the Race Committee may set both a long windward mark *without* an offset, and a short windward mark and offset.

B 5.2 The distance to the long windward mark and the distance to the short windward mark will be displayed on a course board. If flag “D” is displayed on a separate pole, that class will use the long windward mark for each weather leg in that race. If flag “D” is not displayed, that class will use the short windward mark for each weather leg in that race.

B5.2 For Circle 2 only: An offset mark may be used at the long or short windward mark. If used, this will be announced over VHF prior to the warning signal.

————— Newport Regatta Partners —————