



**Verve Inshore Regatta &
J/24 District 15 Championship
Chicago Yacht Club
August 25 – 27, 2023
Belmont Station, Chicago, IL**

Sailing Instructions (SIs)

*The Chicago Yacht Club Regatta Association is the Organizing Authority.
Chicago Yacht Club is the host.*

ABBREVIATIONS

[SP] Rules for which a standard penalty may be applied by the race committee without a hearing, or a discretionary penalty applied by the protest committee with a hearing.

[NP] Rules that are not grounds for a protest or request for redress by a boat. ***This changes RRS 60.1(a).***

1 RULES

- 1.1 The event is governed by the *rules* as defined in *The Racing Rules of Sailing*.
- 1.2 The rules of the International Etchells Class, International J/70 Class, the Shields Class, International J/24 class, and Melges 15 class shall apply for their respective entries.
- 1.3 Appendices T and V1 shall apply.
- 1.4 Crew substitutions or changes shall be recorded online prior to the start of racing each day.
- 1.5 **[DP]** Competitors aboard boats entered in this event, as well as support vessels for boats entered in this event shall not fly drones while racing or in the racing area except with permission from the OA.

2 CHANGES TO SAILING INSTRUCTIONS

Any change to the sailing instructions will be posted:

- 2.1 Before 0900 on the day it will take effect or,
- 2.2 In the event of AP posted ashore, no later than 15 minutes before AP is lowered ashore or,
- 2.3 By 2000 on the day before a schedule change will take effect.

3 COMMUNICATIONS WITH COMPETITORS

- 3.1 Notices to competitors will be posted on the official notice board online at <https://yachtscoring.com/emenu.cfm?eid=15804>.
- 3.2 On the water, the race committee intends to monitor and communicate with competitors via VHF radio. See Addendum B for channel(s).
- 3.3 **[DP]** While racing, except in an emergency, a boat shall not make voice or data transmissions and shall not receive voice or data communication that is not available to all boats.
- 3.4 **[NP]** Errors and omissions in courtesy broadcasts are not grounds for a request for redress. ***This changes RRS 62.1(a).***

4 CODE OF CONDUCT

[DP] Competitors and support persons shall comply with reasonable requests from race officials.



5 SIGNALS MADE ASHORE

- 5.1 Signals made ashore will be displayed from the main flagpole at the northeast of the Belmont Station Barge. In addition, signals made ashore may be distributed, as a courtesy, to the email or text address listed in a boat's entry form. Failure to receive courtesy electronic communications shall not be grounds for a request for redress. ***This changes RRS 62.1(a).***
- 5.2 When flag AP is displayed ashore, '1 minute' is replaced with 'not less than 60 minutes' in Race Signals AP.

6 SCHEDULE OF RACES

6.1 Friday, August 25, 2023

- 0830 Online Crew List and Waivers due for J/70 Class
- 1025 J/70 Class First Warning

Saturday, August 26, 2023

- 0830 Online Crew List and Waivers due for remaining Classes
- 1025 First Warning for all Classes

Sunday, August 27, 2023

- 1025 First Warning for all Classes
- 1400 No warning after this time
- After Racing Awards presentation

7 CLASS FLAGS & RACING AREA

See Addendum B for Class Flags, Initial Starting Sequences, and Racing Areas.

8 COURSES

- 8.1 The diagram(s) in SI Addendum A, including the approximate angles between legs, the order in which marks are to be passed, and the side on which each mark is to be left.
- 8.2 No later than the warning signal, the race committee signal vessel will display the course, which marks each fleet will use, and the approximate compass bearing of the first leg.
- 8.3 When Long Mark 1 and Short Mark 1 are the same distance, only one mark will be set and it will be referred to as Long Mark.

9 MARKS

- 9.1 The starting mark will be described in Addendum A for each circle.
- 9.2 Rounding marks will be orange inflatable shapes or orange robotic marks.
- 9.3 Routine movement of robotic marks will not be grounds for redress. This includes marks returning to station after having been pushed away by a boat or competitor and collisions with marks that do not cause damage. RRS 31 still applies.
- 9.4 Finishing mark may be an orange inflatable, orange robotic mark, or white shape per the course diagrams in Addendum A.
- 9.5 Change marks will be yellow inflatable shapes.
- 9.6 Mark 1 may have an offset. In the event that there is only a single windward mark, the single Mark 1 shall be left to port.
- 9.7 Mark 2 will be a gate. In the event that the gate is not in place, the single leeward Mark 2 shall be left to port.



10 OBSTRUCTIONS

The following area(s) are designated as an obstruction:

a) The area around the pumping stations (cribs) and the marks placed around them by the US Coast Guard. Boats shall not sail between the marks.

11 THE START

- 11.1 The starting line is between a staff displaying an orange flag on the signal vessel at the starboard end and the course side of the port-end starting mark. A pin boat may be used for the port end of the starting line.
- 11.2 **[DP]** Boats whose warning signal has not been made shall avoid the starting area during the starting sequence for other races.
- 11.3 If any part of a boat's hull is on the course side of the starting line at her starting signal and she is identified, the race committee will attempt to hail her sail number. Failure to hail her number, failure of her to hear such a hail, or the order in which boats are hailed will not be grounds for a redress for request. ***This changes RRS 62.1(a).***
- 11.4 A boat that does not start within four minutes after her starting signal will be scored Did Not Start (DNS) without a hearing. ***This changes RRS A5.1 and A5.2.***
- 11.5 The race committee may combine classes for a start by displaying both class flags at the warning.
- 11.6 The race committee may modify the starting sequence after the first race of the regatta for any subsequent races.
- 11.7 Any self-correction movement by a robotic mark on the starting line shall not be considered an improper action of the RC and not grounds for redress under RRS 62.1(a). ***This is added to RRS 27.2.***

12 CHANGE OF COURSE AT STARTS

- 12.1 The Race Committee may signal a change of course for a class by displaying flag C (Charlie) at the preparatory signal with repeated sounds. The signal shall stay up until the start.
- 12.2 The signaled fleet will sail to the change mark.
- 12.3 If there is a subsequent change and the new mark is replaced, it will be replaced by an original mark. ***This changes RRS 27.1 and 33.***

13 CHANGE OF THE NEXT LEG OF THE COURSE

- 13.1 To change the next leg of the course, the race committee will lay a new mark (or move the finishing line) and remove the original mark as soon as practicable. When in a subsequent change a new mark is replaced, it will be replaced by an original mark.
- 13.2 A course change of 10 degrees or less will not be signaled by the race committee. The course change may continue to use the active mark. ***This changes RRS 33(a).***
- 13.3 Offset marks, if used as provided in instruction 9.6 and 9.7, will not be set on a changed leg of the course.

14 THE FINISH

- 14.1 The finishing line is between a staff displaying a blue flag on the signal vessel and the course side of the finishing mark per the course diagrams in Addendum A.
- 14.2 Flag A displayed, with no sound signal, while boats are finishing means "No more racing today."



15 PENALTY SYSTEM

Appendices T and V1 shall apply.

16 TIME LIMITS

- 16.1 The Finishing Window is 20 minutes after the first boat in its respective Class has sailed the course and finished. Boats failing to finish within the Finishing Window and not subsequently retiring, being penalized, or given redress will be scored Time Limit Expired (TLE) without a hearing. A boat scored TLE shall be scored points for the finishing place one more than the points scored by the last boat that finished within the Finishing Window. ***This changes RRS 35, A5.1, A5.2 and A10.***

17 HEARING REQUESTS

- 17.1 Protests and requests for redress shall be filed in person at the protest desk at Chicago Yacht Club Belmont Station or online at <https://yachtscoring.com/emenu.cfm?eid=15804> within the appropriate time limit.
- 17.2 A boat's protest time limit is 60 minutes from the docking time of the Signal Boat for her circle.
- 17.3 Hearings will be held in person at CYC Belmont Station.

18 SCORING

- 18.1 The scoring system is as follows: Low Point Scoring.
- 18.2 Two (2) races are required to be completed to constitute a regatta.
- 18.3 A boat's total score will be the sum of her scores for all races. No score will be discarded. ***This changes RRS A2.***
- 18.4 Classes whose starts have been combined will be scored separately.
- 18.5 Scoring inquiries shall be filed online at the event website at www.yachtscoring.com.

19 SAFETY REGULATIONS

- 19.1 **[SP]** Each boat shall check in by sailing past the race committee signal boat, hailing or displaying her sail number, and receiving an acknowledgement from the race committee prior to her first race on each day of racing. A boat found to have broken SI 19.1 may receive a scoring penalty for her first race that day equal to 20% of the number of competitors registered in her class.
- 19.2 **[SP]** A boat that retires from a race shall notify the race committee either before leaving the course or, if that is impracticable, immediately after arriving ashore. A boat may notify the race committee using the designated VHF hailing channel. A boat found to have broken SI 19.2 may receive a scoring penalty in every race that day equal to 20 percent of the number of competitors registered in her class. ***This changes RRS 63.1.***

20 SUPPLIED BOATS

- 20.1 Breakdowns of Chicago Yacht Club owned Tom 28s and Sonars that are through no fault of the competitors are grounds for a request for redress.
- 20.2 The standing rigging on CYC owned boats shall not be adjusted by competitors.
- 20.3 The hull sides and below the waterline of CYC owned boats shall not be cleaned before or during the regatta.

21 HAUL-OUT RESTRICTIONS

[DP] Keelboats shall not be hauled out during the event except with and according to the terms of prior written permission of the race committee.

22 RISK STATEMENT

Competitors participate in the regatta entirely at their own risk. See RRS 3, Decision to Race. The organizing authority will not accept any liability for material damage, personal injury, or death sustained in conjunction with or prior to, during, or after the regatta.



23 INSURANCE

Each participating boat shall be insured with a valid third-party liability insurance with a minimum cover of \$500,000 per incident or the equivalent. Competitors shall be prepared to supply proof of insurance upon request by the OA.

24 PRIZES

Prizes will be awarded in accordance with the NoR.

25 FURTHER INFORMATION

Patrick Burks - Regatta Manager

Chicago Yacht Club

400 E Monroe St, Chicago, IL 60603

312-861-7777, Ext. 5562 (o)

regattamanager@chicagoyachtclub.org



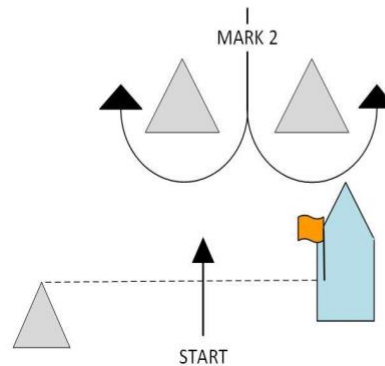
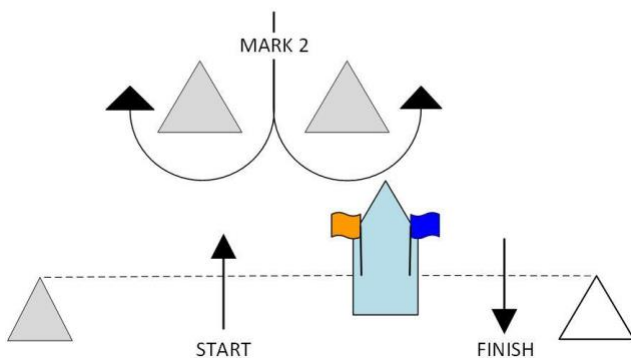
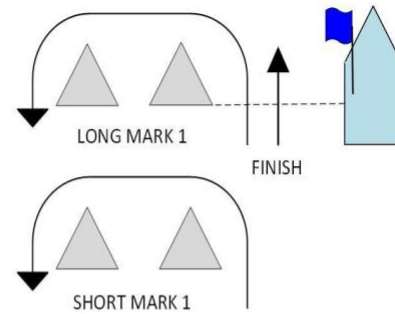
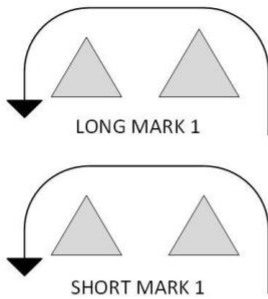
Addendum A Course Diagrams

Course Assignment	4 Legs	5 Legs
LL (Long, Long)	Start - Long Mark 1 - Mark 2 - Long Mark 1 - Finish	Start - Long Mark 1 - Mark 2 - Long Mark 1 - Mark 2 - Finish
LS (Long, Short)	Start - Long Mark 1 - Mark 2 - Short Mark 1 - Finish	Start - Long Mark 1 - Mark 2 - Short Mark 1 - Mark 2 - Finish
SS (Short, Short)	Start - Short Mark 1 - Mark 2 - Short Mark 1 - Finish	Start - Short Mark 1 - Mark 2 - Short Mark 1 - Mark 2 - Finish

*Marks 1, 1A, and 2S/P, and Finish may be different shapes or colors than shown.
See Addendum B*

MARKS MAY BE A DIFFERENT COLOR OR SHAPE BASED ON COURSE ASSIGNMENT. REFER TO ADDENDUM A.

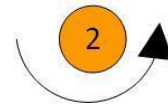
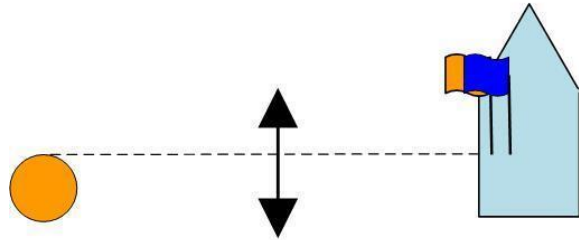
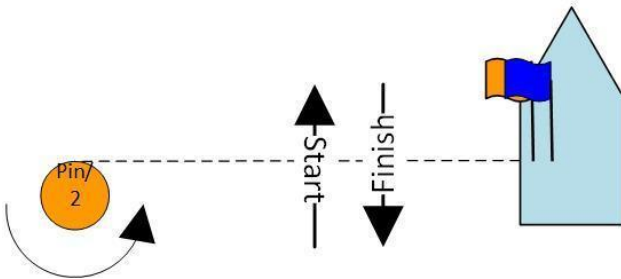
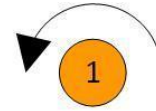
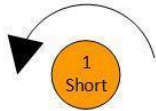
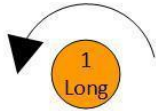
MARKS MAY BE A DIFFERENT COLOR OR SHAPE BASED ON COURSE ASSIGNMENT. REFER TO ADDENDUM A.





Course B – Windward/Leeward	
Signal	Mark Rounding Order
B4	Start - 1 - 2 - 1 - Finish
B6	Start - 1 - 2 - 1 - 2 - 1 - Finish

Course M - Windward/Leeward	
Signal	Mark Rounding Order
M4	Start – 1 – 2 – 1 – Finish
M5	Start – 1 -2 – 1 – 2 – Finish
M6	Start – 1 – 2 – 1 – 2 -1 - finish





Addendum B

Class Flags, Initial Starting Sequences, VHF Channels, and Racing Areas

Red Circle

Courtesy Broadcasts: VHF 73

Approximately 1.2 nm at 60° from the Belmont Buoy

Approximate Coordinates – 41° 57.2'N 087° 36.4'W

Windward Orange primary marks and Yellow Change Marks

Start pin will be an Orange Robotic Mark

Finish pin will be a white mark

<u>Class</u>	<u>Flag</u>
J/24	Code Flag 4 (Four)
Sonar	Class Insignia
Tom 28 & Etchells	Code Flag 1 (One)
Colgate 26 & Shields	Code Flag 2 (Two)

Classes whose starts have been combined will be scored separately.

Blue Circle

Courtesy Broadcasts: VHF Channel 72

Approximately 3.3 nm at 100° from the Belmont Buoy

Approximate Coordinates - 41° 56.7'N 087° 33.7'W

Windward Orange primary marks and Yellow Change Marks

Start pin will be a yellow Robotic Mark

Finish pin will be a white mark or orange robotic mark

<u>Class</u>	<u>Flag</u>
J/70	Class Insignia
Melges 15	Code Flag 5 (Five)