

# THE HEATHERTON TROPHY RACE

## SHELTER ISLAND YACHT CLUB

Sunday, July 2, 2023

### SAILING INSTRUCTIONS



#### 1 RULES

The regatta will be governed by the rules as defined in the Racing Rules of Sailing, (RRS), the prescriptions of the US Sailing Association and the ELIYA General Conditions.

- 1.1 RRS 52 is modified to allow power operated winches for yachts sailing in non-spinnaker classes.

#### 2 NOTICES, COMPETITOR INFORMATION and SIGNALS MADE ASHORE

- 2.1 Any notices, amendments to the Sailing Instructions and all results will be posted on Yacht Scoring. The results will also be posted at the competitor's post race party.
- 2.2 Any amendments to the Sailing Instructions will be available before 0900 hours on the day of the race. Code flag "L" will be hoisted on the flagpole at the Shelter Island Yacht Club. Sailing instructions and any amendments will not be available from the Race Committee Signal Boat.
- 2.3 When "AP" is displayed ashore, "one minute" is replaced with "not less than one hour" in Race Signal AP.
- 2.4 The Race Committee will make any announcements over VHF Channel 72 starting at 1100 hours.
- 2.5 Failure to hear or see any notices, signals made ashore, changes or amendments will not be cause for redress. This changes rule 62.1(a).

#### 3 DIVISIONS and IDENTIFICATION

Division assignments will be indicated on the Scratch Sheet which will be posted on Yacht Scoring.

***To facilitate identification by other entrants and the Race Committee, entrants are highly encouraged to display the numeric pennant corresponding to their division from the backstay or from another prominent location if no backstay is available.***

#### 4 SCHEDULE OF RACES

- 4.1 There will be a race for each of the divisions identified on the scratch sheet.
- 4.3 The warning signal for subsequent divisions shall be made with or after the starting signal for the preceding division.
- 4.4 Divisions might not start in numerical order. The Race Committee may combine two or more divisions into one start by displaying multiple division flags at the Warning Signal. The Race Committee will endeavor to announce the next division(s) to start on VHF Channel 72.

4.5 **The scheduled warning signal for the first division to start a race is 1300 hours**

4.6 Warning signals to start a race shall not be made after 1600 hours.

**5 LOCATION OF THE START**

5.1 The location of the starting area will be posted on the Yacht Scoring website and broadcast on VHF Channel 72 starting at 1100 hours. See Attachment 1, SIYC Primary Race Areas. The failure for a yacht to hear this announcement will not be grounds for redress. This changes rule 62.1(a).

5.2 If after assembling at the announced location conditions call for a different start location the Race Committee boat will display the code flag "F", announce the new starting area on VHF Channel 72 and proceed to the new starting area

**6 CHECK – IN AND RETIREMENT**

6.1 Registered boats are considered to be checked in. Please do NOT sail in the vicinity of, or call, the race committee boat on VHF to check in.

6.2 A yacht that retires from the race shall notify the Race Committee on VHF Channel 72 as soon as possible.

**7 COURSES AND MARKS**

The courses and marks are described in Appendix A, Sections A2, A3 and A4.

**8 THE START**

8.1 Races will be started by using RRS 26 with the warning signal made 5 minutes before the starting signal.

8.2 The starting line is described in Appendix A.

8.3 Yachts whose warning signal has not been made shall keep clear of the starting area.

8.4 A yacht starting later than 15 minutes after her starting signal will be scored DNS. This changes Rule A4.

**9 INDIVIDUAL RECALLS**

9.1 The Race Committee will endeavor to hail each premature starter over VHF Channel 72. However, failure to make such an announcement, nor the timing or order of such an announcement, shall not be grounds for redress. This changes Rule 62.1(a).

9.2 In the event of a general recall for any division, the start sequence will restart with the recalled division.

**10 THE FINISH**

The finish for the races is described in Appendix A.

**11 GOVERNMENT BUOYS**

Government buoys have no required side except when specified as marks of the course. Caution should be exercised for safe navigation.

## **12 PENALTY SYTEM**

The first two sentences of rule 44.1 are changed to read:

A boat may take a One-Turn Penalty when she may have broken one or more rules of Part 2 or Rule 31 in an incident while racing. However, when she may have broken one or more rules or Part 2 while in the zone around a mark other than a starting mark, her penalty shall be a Two-turns Penalty.

## **13 TIME LIMITS**

13.1 The time limit for each division will be four (4) hours after the start time for that division.

13.2 If the time limit for a division expires per RRS 35, the race will be abandoned for that division. Abandonment will be signaled by the Race Committee by displaying code flags "N" over "A" and the division flag for each abandoned division and an announcement over VHF Channel 72.

## **14 PROTESTS AND REQUEST FOR REDRESS**

14.1 A yacht intending to protest is requested to report both their intention to protest and the yacht(s) being protested to the Race Committee over VHF Channel 72 at the finish of the race.

14.2 Protests or requests for redress shall be submitted as soon as practicable but not later than one (1) hour after the Race Committee Finish Boat has docked or ½ hour after the last yacht in each fleet has reached the mooring area by SIYC, whichever is later. The time limit for filing a protest will be posted on the SIYC Notice Board on the south deck of the SIYC clubhouse.

14.3 All protest hearings will take place at the SIYC as soon as possible after the notices are posted. The Protest Committee will attempt to hear protests in the order of receipt. Representatives of yachts who are parties to a hearing shall remain on call in the vicinity of the protest rooms (SIYC Sailing Center).

14.4 When a yacht has been involved in an incident that may be subject to a protest, it is her responsibility to check the protest notices at the end of the protest filing time to see if she is cited in a protest. Failure of any yacht to appear when called for a hearing will be considered by the Protest Committee as grounds for proceeding under Rule 63.3(b).

14.5 Rule 63.5 is changed by adding "A protest involving contact may be heard by the Protest Committee even though the requirements of 61.1(a) and 61.3 have not been fulfilled".

14.6 Breaches of SIs 6 and 8.3 will not be grounds for protest by a yacht. This changes Rule 60.1(a).

## **15 SCORING**

PHRF entries will be scored using time-on-time scoring with PHRF TCFs calculated using the current ELIYA formula.

## **16 SAFETY**

It is recommended that all boats be compliant with the current US Safety Requirements (USSER) US Near Shore category. These regulations are available on the US Sailing website. Competitors participate in this race at their own risk. See RRS 3, Decision to Race. The safety of a boat and her crew is the sole and inescapable responsibility of the person in charge of the boat.

## **17 COMMUNICATIONS**

The Race Committee will monitor VHF Channel 72 for race related communications. Boats shall carry an operating VHF radio capable of receiving weather bulletins and communications from the Race Committee as well as communicating any emergency on board.

## **18 PRIZES**

Prizes for the top finishers in each division will be awarded for the Heatherton Trophy at the competitors' party immediately following the race.

**19 OFFICIAL BOATS**

Official boats will be marked as follows:

Signal / Finish Boats: Blue race committee flag

Mark and Pin Boats: Yellow auxiliary committee flag

**20 LIABILITY WAIVER**

Per RRS 3 DECISION TO RACE: "The responsibility for a boat's decision to participate in a race or to continue racing is her's alone." Competitors participate in the regatta entirely at their own risk. Attention is also drawn to RRS 46 and USSER 1.2, Responsibility. The Organizing Authority will not accept any liability for material damage, personal injury, illness or death sustained in conjunction with or prior to, during, or after the regatta. It is also the boat's responsibility to follow all applicable COVID 19 guidelines and protocols.

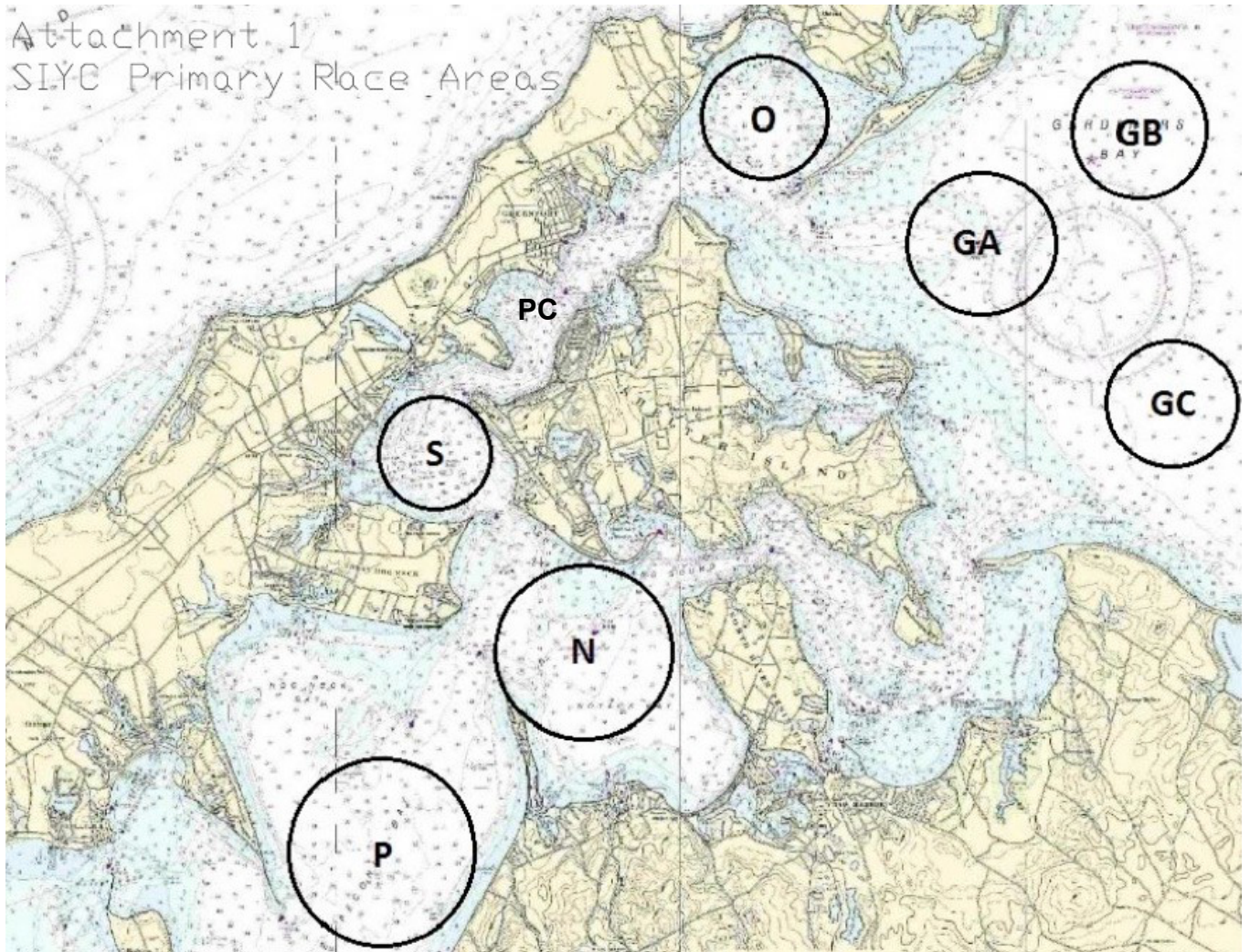
**21 INSURANCE**

Each participating boat shall be adequately insured with valid third-party liability insurance that is appropriate taking into account the value of the boats racing and the type of racing.

**22 FURTHER INFORMATION**

PRO Jeffrey Bresnahan  
Tel: 631-749-1829  
Email:

Attachment 1  
SIYC Primary Race Areas



**Pipes Cove ("PC")** - ½ mile WSW of R"10"

**Gardiners Bay ("G"):**

- Area "GA" - in the vicinity of RW "N" Mo(A) WHIS 1 ½ miles NE Ram Island
- Area "GB" - 2 miles South of Orient Point
- Area "GC" - 1 1/2 miles West of N"14" marking Crow Shoal

**Orient Harbor ("O")**

**Southold Bay ("S")**

**Noyak Bay ("N")**

**Peconic Bay ("P")** - One miles south of R"18"

# Appendix A

## A1 COURSES for the Heatherton Trophy Race

### A1.1 START

Between a staff displaying an Orange flag on the Race Committee Signal Boat and the course side of an inflatable buoy.

### A1.2 COURSE DESCRIPTIONS

The courses for each division will be configured by the Race Committee Signal Boat when it is on station at the starting location. These courses will be communicated from the Race Committee on a board on the stern of the Race Committee Signal boat and by transmission on VHF Channel 72. Each course will be defined by the marks which are to be passed and the order and side on which each mark is to be left. It is anticipated that each course will be designed with the goal of having many points of sail. Marks and roundings are described in **A2** and **A3**. The Race Committee may opt to run a windward – leeward course utilizing the windward mark(s) described in **A4**.

### A1.3 SHORTEN COURSE

The courses may be shortened at any course mark in accordance with Rule 32.

### A1.4 WINDWARD MARK

A1.4.1 In order to achieve a proper start, the Race Committee may elect to set a weather mark at a distance from the starting line. The bearing and distance to this weather mark will be displayed on board on the stern of the Race Committee Signal boat. A flag “W” (weather mark) will be displayed over a red flag (leave to port) or a green flag (leave to starboard) at least five minutes prior to the first warning signal.

A1.4.2 The Race Committee may elect to set a long windward mark and a short windward mark. The distance displayed will be to the SHORT windward mark. The LONG windward mark will be on the same bearing at a distance of 0.5 NM beyond the short windward mark.

A1.4.3 If the flag “L” is displayed with the warning signal for a division, that division will use the LONG windward mark.

A1.4.4 If the flag “L” is **not** displayed at the warning signal for a division, that division will use the SHORT windward mark.

A1.4.5 The windward mark for a division may be used as a subsequent course mark for that division and will be designated as W with a P or S in the posted mark sequence for the course. The side on which W is to be left as a subsequent course mark might be different from the first rounding.

### A1.5 FINISH

The finish will be between a staff displaying an orange flag on the Race Committee Finish Boat and the course side of an inflatable buoy. Unless the windward – leeward option is run, the last entry in the posted course will indicate the vicinity of the finish. PC for Pipes Cove and YC for the mouth of Dering Harbor in the vicinity of Shelter Island Yacht Club. The finish boat may be different from the start boat. For the windward – leeward option the finish location is shown on A4

## **A2 MARKS and ROUNDINGS GARDINERS BAY**

### **A2.1 MARKS**

#### **A2.1.1 GOVERNMENT MARKS**

- |   |   |
|---|---|
| A | RW "N" Mo(A) WHIS 1 ½ miles NE Ram Island               |
| B | N "14" Crow Shoal                                       |
| C | RW "TM" Mo(A) Bell N of entrance to Three Mile Harbor   |
| D | C "1" ENE of Cedar Point                                |
| E | R "2" FLR Bell 4s Entrance to Greenport Channel         |
| F | C "3" Entrance to Greenport Channel off Cornelius Point |
| G | N "6" Orient Harbor                                     |
| H | G "7" FI G 4s off Hay Beach                             |
| J | R "10" FLR 2.5s Fanning Point                           |
| K | G"1G" FI G 4s Gong N of Gardiners Point Ruins           |
| U | GR"MS" FI (2+1) G 6s Midway Shoal                       |

#### **A2.1.2 DROP MARKS**

Drop Marks will be inflatable marks positioned relative to RW "N" Mo(A) WHIS.

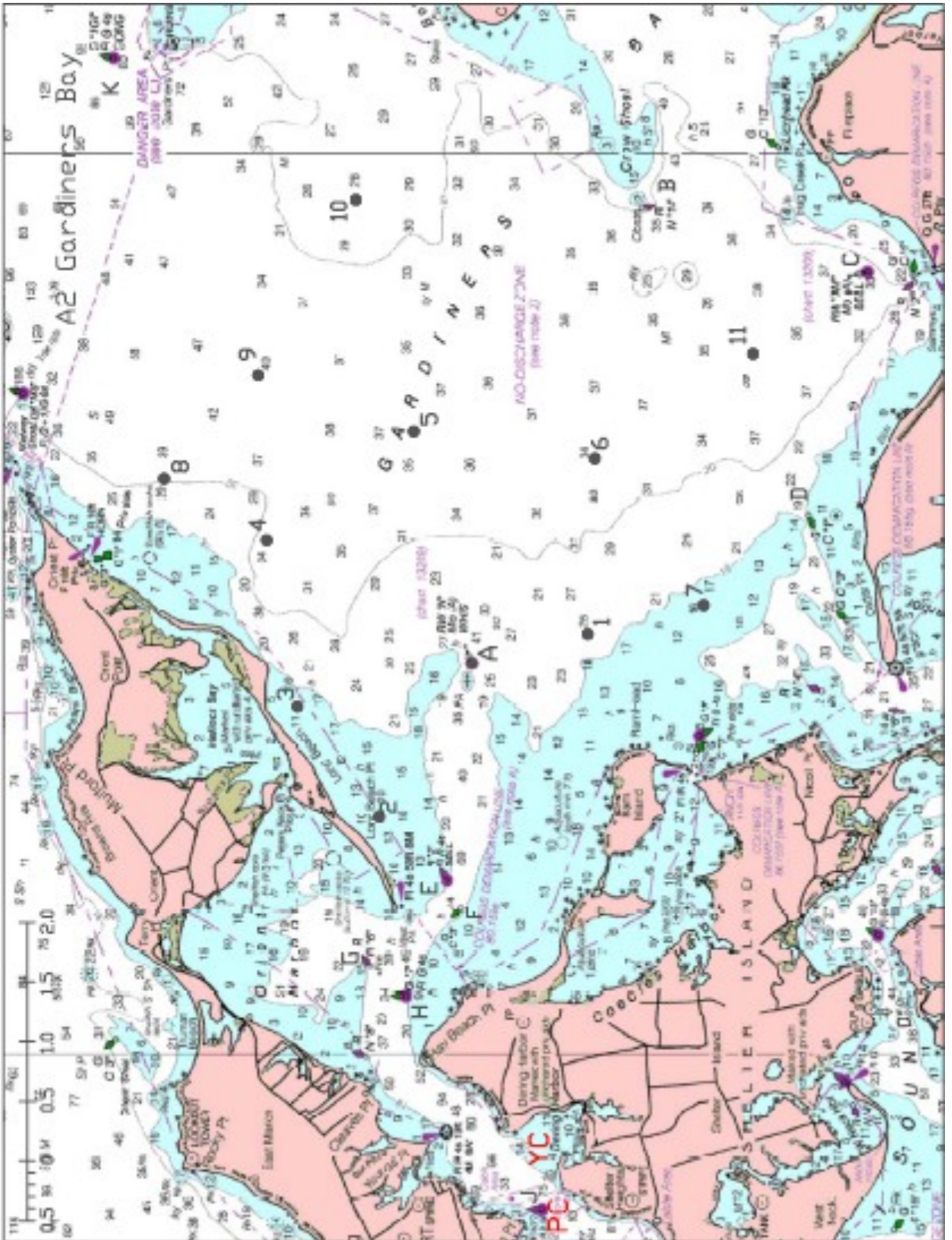
1. Race Marker 1 mile S (180 deg)
2. Race Marker 1.0 miles NW (315 deg)
3. Race Marker 1.25miles N (000 deg)
4. Race Marker 2 miles NE (045 deg)
5. Race Marker 2 miles E (090 deg)
6. Race Marker 2 miles SE (135 deg)
7. Race Marker 1.5 miles S (180 deg)
8. Race Marker 3 miles NE (045 deg)
9. Race Marker 3 miles ENE (068 deg)
10. Race Marker 4 miles E (090 deg)
11. Race Marker 3.5 miles SE by S (146 deg)

ALL BEARING DIRECTIONS ARE MAGNETIC.

### **A2.2 ROUNDINGS**

Letter "S" indicates mark to be left to STARBOARD

Letter "P" indicates mark to be left to PORT





### **A3 MARKS and ROUNDINGS PECONIC BAY**

#### **A3.1 MARKS**

##### **A3.1.1 GOVERNMENT MARKS**

L	G "11" Fl G 4s Jennings Point
M	"CG" about 0.7 miles NW (315 deg) from R "12" Paradise Point
N	R "12" Fl R 4s Paradise Point
P	N "14" Great Hog Neck
Q	C "15" Black Dog Rock
R	R "16" Fl R 4s Noyak Bay
S	G "17" Fl G 4s Jessup Neck
T	R "18" Fl R 4s Hog Neck Bay

##### **A3.1.2 DROP MARKS**

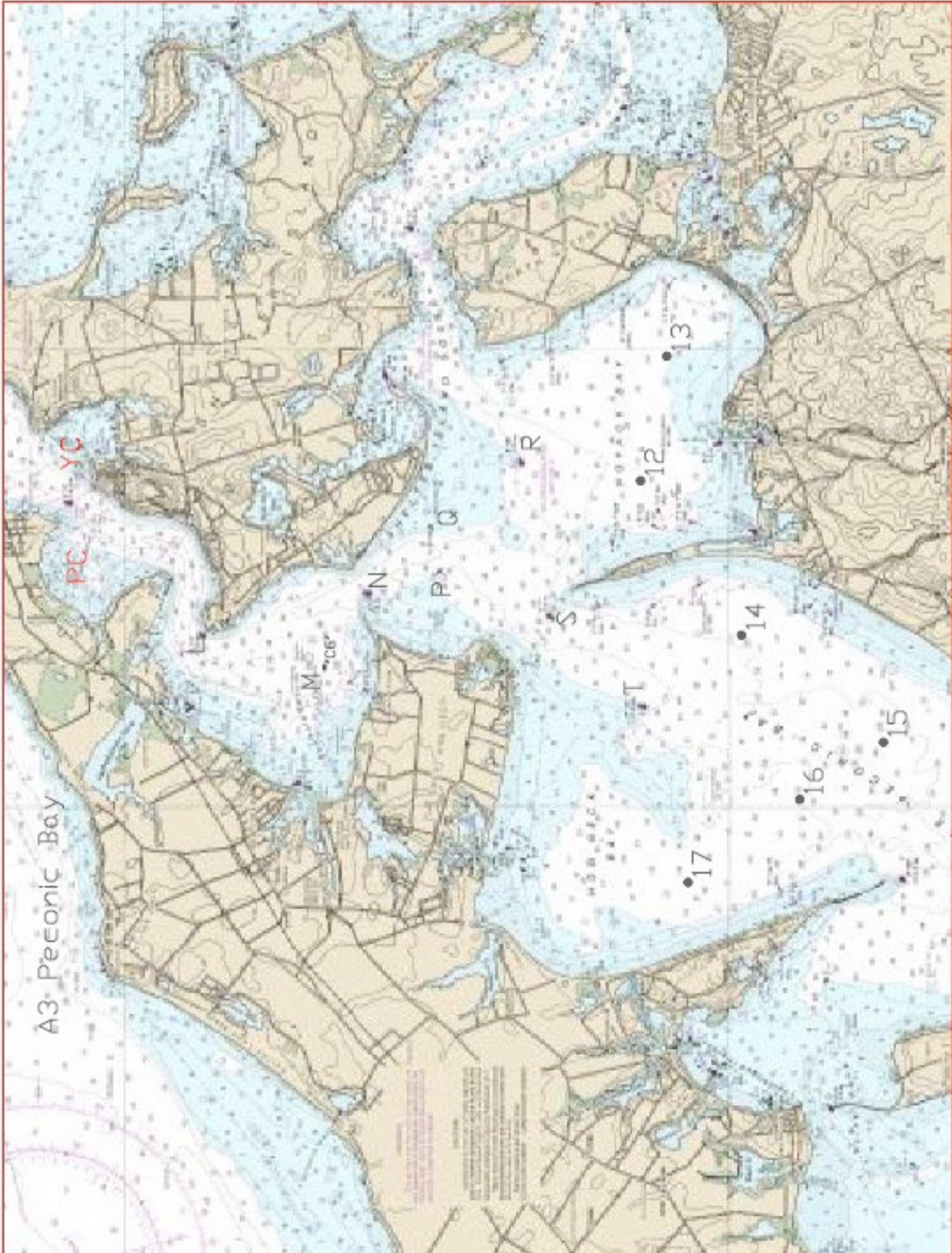
12	Race Marker 1 mile SSW (202 deg) from R "16" Noyak Bay
13	Race Marker 1.5 miles SSE (150 deg) from R "16" Noyak Bay
14	Race Marker 1 mile SSE (157 deg) from N "18" Hog Neck Bay
15	Race Marker 2 miles SSW (202 deg) from N "18" Hog Neck Bay
16	Race Marker 1.5 miles WSW (235 deg) from N "18" Hog Neck Bay

ALL BEARING DIRECTIONS ARE MAGNETIC.

#### **A3.2 ROUNDINGS**

Letter "S" indicates mark to be left to STARBOARD

Letter "P" indicates mark to be left to PORT



# A4 Windward - Leeward

