



April 20 - 23, 2023

SAILING INSTRUCTIONS

(INSHORE)

Organizing Authority: CRW Events

SAILING INSTRUCTIONS

INSHORE CIRCLES 1, 2, & 3

The notation '[NP]' denotes that a breach of this rule will not be grounds for protest by a boat.

This change is added to RRS 60.1(a).

1 RULES

1.1 The regatta will be governed by the rules as defined in *The Racing Rules of Sailing (RRS)*, [2023 ORC Rules](#) and the Charleston Race Week (CRW) PHRF Policies and Procedures which are posted under documents on the Official Notice Board.

1.2 US Sailing Prescriptions to RRS 63.1 and 63.2 will not apply. The US Sailing Prescriptions can be found at [US Sailing Prescriptions](#).

1.3 Appendix V, Alternative Penalties, will apply.

1.4 Appendix T, Arbitration, will apply.

2 COMMUNICATIONS WITH COMPETITORS

2.1 Notices to competitors will be posted online on the event Yacht Scoring Official NoticeBoard. [2023 Charleston Race Week on Yacht Scoring](#) (ONB).

2.2 Any questions concerning the notice of race, these sailing instructions, or any other issue shall be submitted to the race committee (RC) at info@charlestonraceweek.com. All inquiries and responses will be posted on the ONB.

3 CHANGES TO SAILING INSTRUCTIONS

3.1 Any shoreside change to the sailing instructions will be posted on the ONB before 0900 on the day it will take effect, except that any change to the schedule of races will be posted by 2000 on the day before it will take place.

3.2 For an on-the-water change to the sailing instructions, in accordance with RRS 90.2(c): "L" flag shall be displayed with the class flag, if appropriate, and will be followed by a broadcast hail of the change on the designated VHF channel.

4 SIGNALS MADE ASHORE

4.1 Signals made ashore will be posted and displayed on the ONB.

4.2 When flag "AP" is displayed ashore, "1 minute" is replaced with "not less than 30 minutes" in the race signal AP. This changes RRS Race Signals.

5 SCHEDULE OF RACES & EVENTS

5.1 Thursday, April 20

1200-1700 Registration packet pickup at the Tent North of Museum

1730-1800 Skippers' Meeting at the Hangar Deck USS Yorktown

1800 Local Knowledge at the Hangar Deck

1800-2130 Opening Party at the Hangar Deck

Friday, April 21

1100 Inshore (Circles 1, 2, & 3) - First warning signal

1800-2100 Fleet Night Out

Saturday, April 22

1100 Inshore (Circles 1, 2 & 3) - First warning signal

1800-2100 Daily Awards at the Hangar Deck

Sunday, April 23

1100 Inshore (Circles 1, 2 & 3) - First warning signal

1400 No warning after

1500-1800 Awards Ceremony at the Hangar Deck

5.2 Eight races (8) are scheduled. One (1) race for each class shall be completed to constitute a regatta for that class.

5.3 The RC may run up to, but not more than, three (3) races in a single day.

5.4 The orange starting line flag will be displayed with one sound at least five minutes before a warning signal is made to alert boats that a race or sequence of races will begin soon.

6 CLASS FLAGS, BOW NUMBERS, STICKERS, & SAIL NUMBERS [NP][DP]

6.1

Circle 1:	Circle 2:	Circle 3:
VX One Blue	J/70 White	ORC D Blue
J/24 Pink	Melges 24 Blue	J/105 Purple
RS 21 - Green		J/88 Pink
PHRF and J/22 - Yellow		Melges 32 - Neon Green
		Hobie 33 - White

6.2 Certain classes will be assigned bow numbers. These bow numbers shall be displayed on both sides of the bow.

6.3 Event bow stickers shall be attached to both sides of the boat's hull at all times while racing. If applied, the event stickers are to be mounted approximately 2-4 inches below deck level and 6-8 inches aft of any bow numbers. Boats failing to display event bow stickers may be subject to protest.

6.4 All boats shall display only the sail numbers under which she has entered, unless prior approval is obtained from the RC and posted on the ONB.

7 RACING AREA

7.1 The racing areas are shown in Circle Locations in "Illustration A."

8 COURSES

8.1 The diagrams in "Illustration A" detail the courses, including the approximate angle between legs, the order in which the marks are to be passed and side on which a mark is to be left.

8.2 The course designation will be displayed on the signal vessel on placards at or before the warning.

8.3 The bearing and distance to the first mark will be displayed on the signal vessel on placards at or before the warning signal.

8.4 If one of the leeward gate marks is missing, boats shall sail around the existing leeward mark leaving it to port.

9 MARKS

9.1

	Circle 1:	Circle 2:	Circle 3:
Mark 1	Yellow Tetra	Green Tetra	Orange Tetra
Mark 0 (offset)	Orange Ball	Orange Ball	White Ball
Marks 2A/2B	Yellow Tetra	Green Tetra	Orange Tetra
Start/Finish Marks	RC Vessel	RC Vessel	RC Vessel
Start Pin, if used	Green Cylinder	Yellow Tetra	Yellow Tetra
Finish Pin, if used	Orange Cylinder	Yellow Tetra	White Ball
Change Mark	Orange Tetra	Red Tetra	Yellow Tetra

9.2 A RC vessel signaling a change of leg of the course is a mark as provided in SI 14.3.

10 CHECK IN [NP][DP]

10.1 Each day before the warning signal of the first race in which she intends to start, each boat shall sail past the stern of the signal vessel on starboard tack and check-in by hailing their sail number. They shall continue to do so until the RC verbally acknowledges their sail number.

10.2 Boats failing to check in accordance with 10.1 will be given a 20% scoring penalty as stated in rule 44.3(c). This will apply to each boat's first race of the day.

11 THE START

11.1 The starting line will be between the staffs displaying orange flags on the starting marks. In the event that the port end mark vessel is not on station, it will be replaced by an inflatable mark. The course side of the inflatable mark will define the port end of the line.

11.2 For the J/70 and VX One Design classes only, the RC may set a buoy as a mid-line guide near the middle of the start line. This is neither a starting mark nor a mark of the course.

11.3 Boats whose warning signal has not been made shall avoid the starting area during the starting sequence for other races. The starting area is defined as 100 yards in all directions from the starting line.

[NP][DP]

11.4 A boat that does not start within 4 minutes after her starting signal will be scored Did Not Start (DNS) without a hearing. This supplements RRS A4 and A5.2.

12 RECALLS

12.1 The RC will attempt to broadcast twice the bow or sail numbers of all boats observed to be OCS at the start. The list will not be updated based on a boat's actions to start properly while the broadcast is being made.

12.2 For classes that are using bow numbers the boats identified under RRS 30.3 or 30.4 will be broadcast on designated VHF channels using bow numbers. This broadcast may be broadcast before the first boat rounds the weather mark. This changes RRS 30.4.

12.3 Failure of the RC to make a broadcast or to time it accurately or the order of boat(s) hailed will not be grounds for granting redress. This supplements RRS 60.1(b) and 62.1(a).

13 CHANGE OF COURSE BEFORE THE START

13.1 If there is a significant wind shift, the signal vessel may signal a change of course for classes/fleets not yet started.

13.2 If the RC signal vessel displays flag "C" before the warning signal, accompanied by a series of repetitive sounds, the first mark of the course will be a new mark. When in a subsequent change a new mark is replaced, it will be replaced by an original mark. This changes RRS 26 and 33.

14 CHANGE OF THE NEXT LEG OF THE COURSE

14.1 To change the next leg of the course, the RC will lay a new mark (or move the finishing line) and remove the original mark as soon as practical. When in a subsequent change a new mark is replaced, it will be replaced by an original mark.

14.2 The Offset (Mark 0) will not be set after a course change or a change of course before the start.

14.3 Except at a gate, boats shall pass between the RC vessel signaling a change of the next leg and the nearby turning mark, leaving the mark to port and the RC vessel to starboard.

14.4 The RC may, without signal, move a mark to change the direction up to 10 degrees or the length up to 10% of the previous length, provided that no boat is sailing to the mark. This changes RRS 33.

14.5 The RC will attempt to broadcast any course changes over the designated VHF channel as a courtesy. Failure of a boat to hear such notification or failure to broadcast will not be grounds for granting redress. This supplements RRS 60.1(b) and 62.1(a).

15 THE FINISH

15.1 For windward finishes, the finishing line will be between a staff displaying a checkered flag on the finish vessel and a staff displaying a checkered flag on the nearby finish vessel or the course side of an inflatable buoy. This changes Race Signals.

15.2 For downwind finishes, the finish will be on the opposite side of the signal vessel from the starting line between a staff displaying a checkered flag on the signal vessel and a staff displaying a checkered flag on a nearby finish vessel or the course side of an inflatable buoy. This changes Race Signals.

16 PENALTY SYSTEM

16.1 Unless the course is shortened to finish at the windward mark, penalties within the zone of the windward mark or on the offset leg may be delayed and taken as soon as possible on the downwind leg. This changes RRS 44.2.

16.2 Penalty declarations - A boat that has taken a penalty turn(s), a boat wishing to take a post-race penalty, or a boat wishing to retire after finishing in accordance with SI 1.3 shall complete the penalty declaration form and submit via email to the Chief Judge ashtonsh1@me.com and the Jury Secretary evpier@aol.com before the end of the protest time limit. [NP][DP].

17 TIME LIMITS

17.1 The time limit for the first boat to finish in each class will be 90 minutes.

17.2 Boats failing to finish within the finishing window of 30 minutes from the first boat to finish will be scored Time Limit Expiry (TLE), without a hearing. (See Scoring). This change is added to RRS 35, A5.1 and A5.2.

18 HEARING REQUESTS

18.1 Protests and requests for redress or reopening can be filed online via Yacht Scoring in the Owners Corner (see Online Protest Filing System). Editable protest forms can be found under General Race Forms. Completed protest forms should be filed with or emailed to the Jury Secretary Evpier@aol.com and the Jury Chair at Ashtonsh1@me.com within the appropriate time limit. This supplements RRS 61.2.

18.2 Protest time limit is 60 minutes after the RC signal vessel of the appropriate circle docks. The RC will post the docking time on the ONB.

18.3 Notices will be posted on the ONB no later than 30 minutes after the protest time limit to inform competitors of hearings in which they are parties or named as witnesses. Hearings will be held in the protest rooms on the USS Yorktown at the time set forth in the posted notice.

18.4 For the purpose of RRS 64.4(b) the "authority responsible" is the measurer appointed by the organizing authority (CRW Events).

18.5 Notices of protests by the RC, the technical committee or the protest committee will be posted to inform boats under RRS 61.1(b).

18.6 On the last scheduled day of racing, a request for redress based on a protest committee decision shall be delivered no later than 30 minutes after the decision was posted. This changes RRS 62.2.

18.7 If the race committee posts a list of boats scored OCS, ZFP, UFD, BFD, DNE, NSC or TLE on the ONB before the protest time limit, a request for redress based on such a posted score shall be made no later than one hour after the protest time limit. This changes RRS 62.2(a).

19 SCORING

19.1(a) When five (5) or fewer races have been completed, a boat's series score will be the total of its race scores. (b) When six (6) or more races have been completed, a boat's series score will be the total of its scores, excluding its worst score.

19.2 Boats scored TLE, and not subsequently retiring, being penalized or given redress, will be scored points equal to the number of boats finishing within the time limit plus two points, without a hearing. The total shall not exceed the total number of entries in that class. This changes RRS 35, A5.1, A5.2 and A10.

19.3 A boat that did not start, did not finish, or was disqualified shall be scored points for the finishing place one more than the number of boats entered in that race. This change is added to RRS A5.2.

19.4 The J 70 Mixed + gender teams shall be comprised of at least 50% female crew.

19.5 Inshore ORC classes will be scored using time-on-time, five number ratings for windward/leeward courses. Prior to the warning signal, the RC will announce its intention for the wind band to be used for scoring the race.

19.6 Scoring inquiries shall be made through the ONB under Scoring Inquiries.

20 SAFETY REGULATIONS [NP][DP]

20.1 Each competitor is solely responsible for their own safety and, by participation, agrees to sail and use the event facilities at their own risk. Neither the CRW Events nor persons assisting with the conduct of races shall be responsible for damage or injury suffered during races or related activities.

20.2 A boat that retires from a race, leaves the course area or returns to the course area between races shall notify the RC as soon as possible. Failure to do so may result in protest.

20.3 Each morning, there will be a courtesy announcement on each circle's designated VHF channel and at the end of the day's racing to communicate expected commercial traffic needs to the fleets. Boats are reminded that Charleston Harbor and its approaches have a high level of commercial traffic.

20.4 Inshore Circles 1, 2 and 3 competitors, please be advised that when transiting to the race area from Patriots Point in Charleston Harbor, leave G29 to starboard. Passing between G29 and Castle Pinckney is not recommended.

20.5 A boat and its crew shall at all times keep clear of all commercial vessels and shall not maneuver in any manner which would cause a commercial vessel to be unable to sail its proper course or carry out its commercial functions in a normal manner. Boats must take evasive action well in advance of any potentially dangerous situation.

20.5.1 A boat whose actions or maneuvers result in danger signal (5 or more blasts) from commercial vessels shall be protested by the race committee or protest committee. The penalty for breaking this rule may be disqualification from the entire regatta.

20.5.2 A boat without way shall use all means of propulsion to avoid commercial traffic. The boat may continue racing provided: a) the boat does not gain an advantage; b) using the propulsion is the boat's only means of avoiding the commercial traffic, and; c) the boat submits a report in writing or electronically to the RC by the protest time limit that describes the incident and the boat's actions.

21 REPLACEMENT OF CREW OR EQUIPMENT

21.1 Substitution of competitors or equipment will not be allowed without the prior written approval of the Event Principal Race Officer or Race Director.

21.2 Approved changes will be posted on the ONB by 0800 hrs on the day the change will take effect.

22 EQUIPMENT AND MEASUREMENT CHECKS

A boat or equipment may be inspected at any time for compliance with the class rules and SIs. On the water, a boat can be instructed by a member of the RC or the technical committee to proceed immediately to a designated area for inspection.

23 SUPPORT TEAMS [NP][DP]

23.1 Support vessels shall register with the race organizers during registration.

23.2 Failure of a support vessel to register shall be considered a breach of RRS 2 (Fair Sailing) by the boats associated with the support vessel and is subject to protest.

23.3 Support vessels shall be marked by a pennant supplied by the RC and remain at least 150 yards from the race course from preparatory signal until all boats have finished or retired or the RC signals postponement, general recall or abandonment.

23.4 Support vessels shall carry a VHF radio tuned to the designated race committee VHF channel of the nearest race circle and be ready to assist the RC if so instructed.

23.5 Support drivers shall have valid third-party liability insurance or the equivalent and provide proof upon request by the RC or Organizing Authority.

24 Section Left Blank

25 PRESS AND SPECTATOR BOATS [NP][DP]

25.1 All press and official spectator vessels shall register with the race organizers during registration. Press and official spectator vessels shall monitor the designated VHF channel for the course they are on and be ready to assist the RC if so instructed.

25.2 Press and spectator vessels shall not interfere with the racing in any way and remain at least 150 yards from any boat that is racing and on the outside of the race course as defined by the location of the rounding marks at a distance outside the race course where their wake causes no problem.

25.3 The organizers may appoint one or more photo boats, which will be allowed within the race course. The position of these boats shall not be grounds for redress.

25.4 Press and spectator vessels shall display a flag, or other identification symbols as may be required by the RC.

26 RADIO COMMUNICATION [NP]

26.1 The RC will broadcast its intentions for racing that day on the designated VHF Channel at 0930 and again at 1000.

26.2 The RC may broadcast the bearing and distance to the first mark or report other visual signals on the applicable VHF channel before the warning signal. Information broadcast by the race committee is provided as a courtesy to competitors and does not alter the competitors' responsibility to observe the race committee's visual signals, which govern the conduct of the racing. Errors or omissions on the part of the race committee will not be grounds for granting redress. This supplements RRS 60.1(b) and 62.1(a).

26.3 The designated VHF channels for each circle are as follows:

Circle 1	VHF Channel 1066 or 66A
Circle 2	VHF Channel 69
Circle 3	VHF Channel 71

27 PRIZES

27.1 One daily trophy will be awarded in each class for each day of racing. One overall trophy will be awarded in each class for every three boats entered up to a maximum of three trophies per class.

27.2 The entry that wins the most competitive one-design class will receive recognition on the Charleston Race Week Cup Perpetual Trophy.

27.3 Jubilee Sportsmanship Perpetual Trophy will be awarded to the participant who has displayed outstanding examples of good sportsmanship during Charleston Race Week.

27.4 The entry that wins the most competitive ORC class will receive recognition on the Palmetto Cup Perpetual Trophy.

27.5 The Organizing Authority may award additional prizes at their discretion.

28 RISK STATEMENT AND DISCLAIMER OF LIABILITY

28.1 Competitors participate in the regatta entirely at their own risk. (See RRS 3, Decision to Race). The Organizing Authority, CRW Events, will not accept any liability for material damage or personal injury, or death sustained in conjunction with or prior to, during, or after the regatta.

28.2 The safety of a boat and its crew is the sole and inescapable responsibility of the skipper who shall ensure that the boat is fully sound, thoroughly seaworthy, and manned by an experienced and physically able crew. Neither the establishment of regulations nor inspection of a boat in any way limits or reduces the complete and unlimited responsibility of the skipper.

28.3 CRW Events, Sponsors of the Charleston Race Week, and their employees and volunteers do not accept responsibility for the loss of life or injury to participants or others, or for the loss or damage to any vessel in any way or from any cause during or relating to this event.

28.4 The skipper shall be responsible for the conduct of their crew. In the event of a serious breach of conduct, the destruction of property or the failure to comply with a reasonable request of any race officer or committee member, the skipper will be responsible for all damages. The boat may be subject to protest which, may include disqualification from the regatta.

29 INSURANCE

Each participating boat shall be insured with valid third-party liability insurance with a minimum coverage of \$300,000 (USD) per event or the equivalent.

30 INSHORE RACE OFFICIALS

Event/Race Director: Randy Draftz

rdraftz@charlestonyachting.com

Event PRO: Taran Teague

janetaranteague@gmail.com

703.851.2552

Circle One RO: Chip Till

chiptill5351@gmail.com

843.556.6554

Circle Two RO: Mark Foster

mfoster1053@gmail.com

361.816.9801

Circle Three RO: Matthew Hill

matthewhill@ussailing.org

401.266.4102

Chief Judge: Sarah Ashton

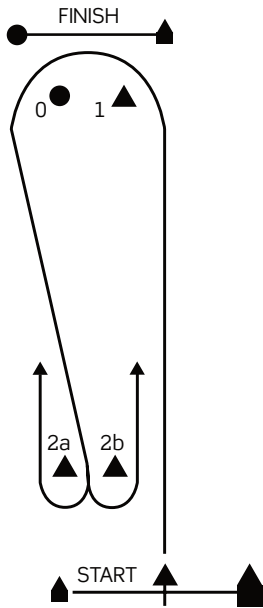
ashtonsh1@me.com

843.722.3596

INSHORE RACE COURSES CIRCLES 1,2,&3 • ILLUSTRATION A

The courses sailed shown in the diagrams below apply to the courses sailed on the inshore course. The leeward gate (mark 2 a/b) may be adjusted at the discretion of the Race Committee to keep the course square without further signals.

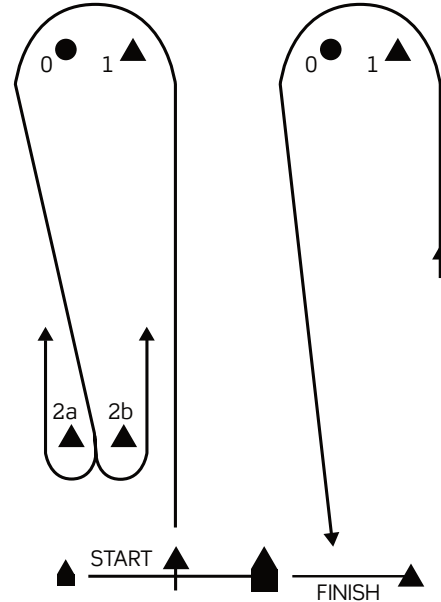
Course 3 and 5 are Windward-Leeward with a finish to Windward.



Course 3: 3 Legs
Marks: S - 1 - 0 - 2a/b - F

Course 5: 5 Legs
Marks: S - 1 - 0 - 2a/b - 1 - 0 - 2a/b - F

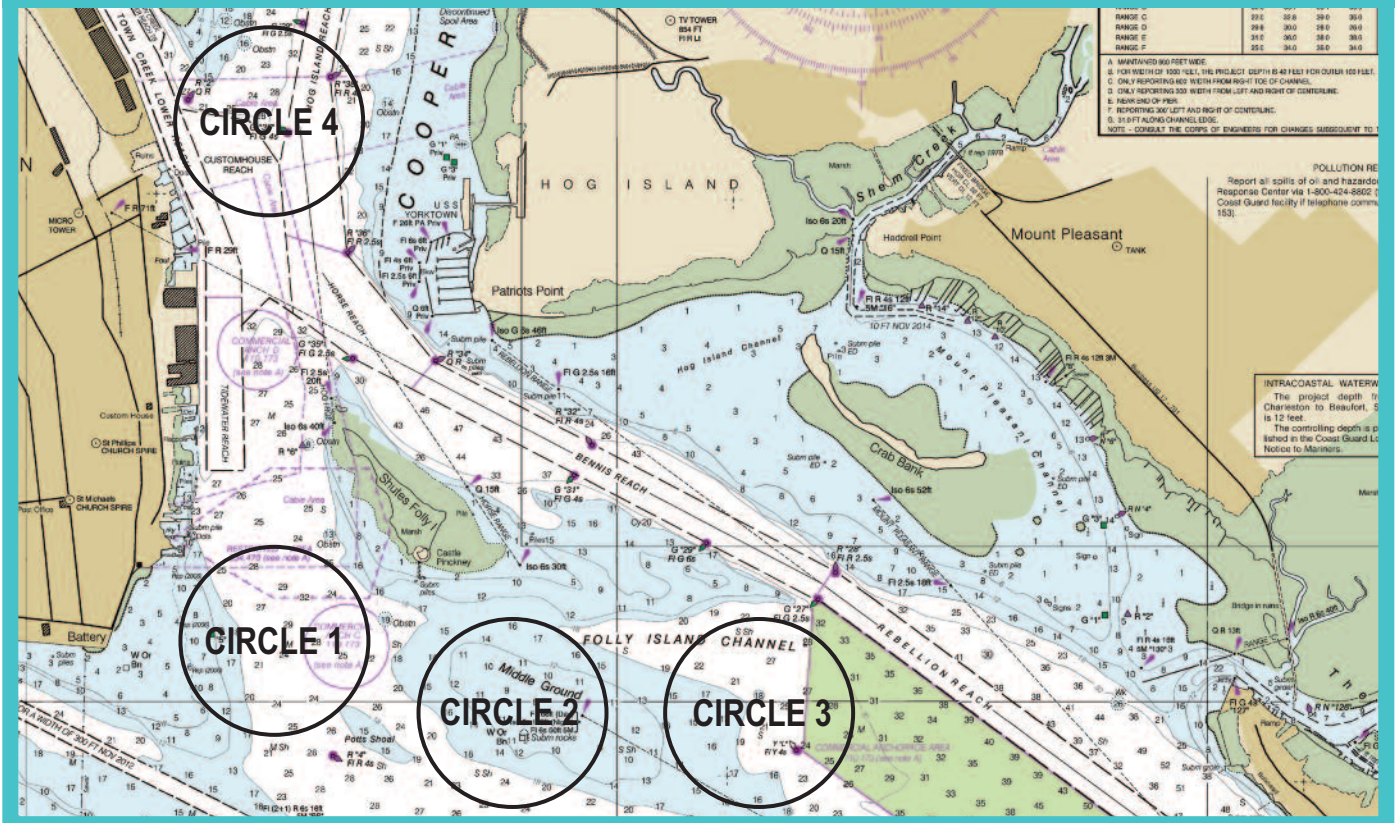
Course 4 and 6 are Windward-Leeward with a finish to Leeward.



Course 4: 4 Legs
Marks: S - 1 - 0 - 2a/b - 1 - 0 - F

Course 6: 6 Legs
Marks: S - 1 - 0 - 2a/b - 1 - 0 - 2a/b - 1 - 0 - F

CIRCLE LOCATIONS





SAILING INSTRUCTIONS

OFFSHORE CIRCLE 5

2023 Charleston Race Week - April 20 - 23, 2023

Organizing Authority: CRW Events

The notation [NP] denotes that a breach of this rule will not be grounds for protest by a boat. This changes RRS 60.1(a)

1 RULES

- 1.1 The regatta will be governed by the rules as defined in *The Racing Rules of Sailing* (RRS) and the [ORC Rating Systems 2023](#).
- 1.2 The [Equipment Rules of Sailing](#) will apply.
- 1.3 The classes sailing on the Offshore Circle 5 shall comply with [World Sailing Special Regulations](#) Category 4 requirements.
- 1.4 US Sailing Prescriptions to RRS 63.1 and 63.2 will not apply.
- 1.5 Appendix V, Alternative Penalties, will apply.
- 1.6 Appendix T, Arbitration, will apply.

2 COMMUNICATIONS WITH COMPETITORS

- 2.1 Notices to competitors will be posted on the [Yacht Scoring Official Notice Board. 2023 Charleston Race Week on Yacht Scoring \(ONB\)](#).
- 2.2 Any questions concerning the notice of race, these sailing instructions, or any other issue shall be submitted to info@charlestonraceweek.com. All inquiries and responses will be posted on the ONB.

3 CHANGES TO SAILING INSTRUCTIONS

- 3.1 Any shoreside change in the sailing instructions will be posted on the ONB before 0800 on the day it will take effect, except that any change to the schedule of races will be posted by 2000 on the day before it will take place.
- 3.2 For an on-the-water change to the sailing instructions, in accordance with RRS 90.2(c): "L" flag shall be displayed with the class flag, if appropriate, and will be followed by a broadcast of the change on the designated VHF channel. This changes RRS Race Signals.

4 SIGNALS MADE ASHORE

- 4.1 Signals made ashore will be displayed and posted on the ONB.
- 4.2 When flag "AP" is displayed ashore on the ONB, the warning signal for the first start will be signaled not less than 60 minutes after "AP" is lowered. This changes RRS Race Signals.

5 SCHEDULE OF RACES & EVENTS

- 5.1 **Thursday, April 20**
 - 1200-1700 Registration packet pickup at the Tent North of the Museum
 - 1730-1800 Skippers Meeting at the Hangar Deck of USS Yorktown
 - 1800 Local Knowledge at the Hangar Deck
 - 1800-2130 Opening Party at the Hangar Deck
- 5.1 **Friday, April 21**
 - 1100 Offshore Circle 5 - First warning signal
 - 1800-2100 Fleet Night Out
- 5.1 **Saturday, April 22**
 - 1100 Offshore Circle 5 - First warning signal
 - 1800-2100 Daily Awards at the Hangar Deck
- 5.1 **Sunday, April 23**
 - 1100 Offshore Circle 5 - First warning signal
 - 1200 No warning after
 - 1500-1800 Awards Ceremony at the Hangar Deck

5.2 Six (6) races are scheduled for Offshore Circle 5. One race for each class shall be completed to constitute a regatta for that class.

6 CLASS FLAGS, BOW STICKERS, & SAIL NUMBERS [NP][DP]

- 6.1 The class flag for ORC A will be a white flag.
- 6.2 Boats shall display the appropriate class flag from the backstay at least 5 feet above the deck. Flags are available in the skipper's packages.
- 6.3 Event bow stickers shall be attached to both sides of the boat's hull at all times while racing. The event stickers are to be mounted approximately 6-10 inches below deck level and 8-14 inches aft of the bow. Boats failing to display event bow stickers may be subject to protest.
- 6.4 All boats shall display only the sail numbers under which she has entered, unless prior written approval is obtained from the RC and posted on the ONB.

7 RACING AREA

The racing area will be the Charleston Harbor and ocean as shown in "Illustration B" Race Areas.

8 COURSES

- 8.1 The diagram in the SI "Illustration B" shows typical courses 1, 1E, 1A, 2L, 3L, and 4L. The "E" and "A" courses offer a longer Government mark course. The 2L and 3L courses offer two windward leeward laps.
Note: For courses 2L and 3L, the drop mark (Mark 1 and Mark 2) may be to either side of the channel depending on the magnetic course posted in SI 8.2.
- Course 1 - 10.5 nm (ORC):** start, leave G25 to starboard, pass through GATE (G21/R22), pass through GATE (G15/R16), pass through GATE (G21/R22), leave G25 to port, finish.
- Course 1E - 13.5 nm (ORC):** start, leave G25 to starboard, pass through GATE (G21/R22), pass through gate (G13/R14), pass through GATE (G21/R22), leave G25 to port, finish.
- Course 1A - 16.5 nm (ORC):** start, leave G25 to starboard, pass through GATE (G21/R22), pass through gate (G11/R12), pass through GATE (G21/R22), leave G25 to port, finish.
- Course 2L - 16.5 nm (ORC):** start, leave G25 to starboard, pass through GATE (G21/R22), pass through gate (G15/R16), leave Mark 1 to port, leave Mark 2 to port, leave Mark 1 to port, pass through GATE (G15/R16), pass through GATE (G21/R22), leave G25 to port, finish. Mark 1 from GATE (G15/R16) 2.0 nm, Mark 2 from GATE (G15/R16) 1.0 nm.
- Course 3L - 19.5 nm (ORC):** start, leave G25 to starboard, pass through GATE (G21/R22), pass through gate (G13/R14), leave Mark 1 to port, leave Mark 2 to port, leave Mark 1 to port, pass through GATE (G13/R14), pass through GATE (G21/R22), leave G25 to port, finish. Mark 1 from GATE (G13/R14) 2.0 nm, Mark 2 from GATE (G13/R14) 1.0 nm.
- Course 4L - 20.3 nm (ORC):** start, leave G25 to starboard, pass through GATE (G21/R22), round R14 to port, round N2 (off Rattlesnake Shoal) to port, round Mark 1 to port, round R16 to starboard, pass through GATE (G21/R22), leave G25 to port, finish. Mark 1 is located at approximately 32°44.55N and 079°46.65W.
- Course 4LA - 20.3 nm (ORC):** start, leave G25 to starboard, pass through GATE (G21/R22), round R16 to port, round Mark 1 to starboard, round N2 (off Rattlesnake Shoal) to starboard, round R14 to starboard, pass through GATE (G21/R22), leave G25 to port, finish. Mark 1 is located at approximately 32°44.55N and 079°46.65W.

8.2 Placards showing the course to be sailed for each class, and the direction to Marks 1 and 2 (if used) from the gate marks will be displayed on the signal vessel and announced on VHF 73 no later than the warning signal.

8.3 Prior to the warning, the RC will announce the designated scoring gate mark if any.

9 MARKS

The start marks will be a race committee signal vessel and a yellow tetrahedron. Government marks are G"25", G"21", R"22", G"15", R"16", G"13", R"14", G"11", R"12", and N"2" off Rattlesnake Shoal. Mark 1 is a yellow tetrahedron, and Mark 2 is an orange tetrahedron with a black band. Finish marks will be a race committee vessel and an yellow inflatable mark.

10 CHECK IN

Boats intending to race shall check in with the RC via VHF channel 05A or 1005 at the starting area no earlier than 30 minutes before their start time. Boats shall confirm the number of persons on board. A boat shall continue to check in until acknowledged by the RC. [NP][DP]

11 THE START

11.1 The starting area will be in the area bounded by Rebellion Reach to the southwest and the access to the Mt Pleasant Channel G "1" to the northeast and FL R "130" at the access to the ICW/Sullivan Island Narrows to the east. (Approximately 32 46.00N and 79 52.50W.) The Pursuit Classes on Circle 6 and Offshore Circle 5 will use the same start/finish line location.

11.2 The starting line will be between the staff displaying an orange flag on the signal vessel and the course side of an inflatable mark.

11.3 The RC will use RRS 26.

11.4 A boat starting later than 10 minutes after her starting signal will be scored Did Not Start (DNS) without a hearing. This changes supplements RRS 63.1 and A5.

12 RECALLS

Failure of a boat to hear her recall notification and the timing and order of such hails or failure to hail will not be grounds for granting redress. This supplements RRS 60.1(b) and 62.1(a).

13 CHANGE OF THE NEXT LEG OF THE COURSE

The course configuration will not be changed. However, the RC may shorten the course at any mark of the course.

14 THE FINISH

14.1 The finish line will be in the vicinity of the start, which is the area bounded by Rebellion Reach to the southwest and the access to the Mt. Pleasant Channel G "1" to the northeast and FL R "130" at the access to the ICW/Sullivan Island Narrows to the east. (Approximately 32°46.00N and 79°52.50W.)

14.2 The finish line will be between a staff displaying a checkered flag on the signal vessel at the port end and the course side of a yellow inflatable mark at the starboard end.

15 PENALTY SYSTEM

A boat that has taken a penalty turn(s), a boat wishing to take a post-race penalty, or a boat wishing to retire after finishing in accordance with SI 1.5 shall complete the penalty declaration form and submit via email to the Chief Judge ashtonsh1@me.com and the Jury Secretary evpier@aol.com before the end of the protest time limit. [NP][DP]

16 TIME LIMIT

16.1 All boats shall finish by 1600 on Friday and Saturday.

16.2 All boats shall finish by 1500 on Sunday.

16.3 Boats not finishing within the time limit will be scored Time Limit Expiry (TLE), without a hearing. (See Scoring) This change is added to RRS 35, A5.1 and A5.2.

17 HEARING REQUESTS

17.1 Protests and requests for redress or reopening can be filed online via Yacht Scoring in the Owners Corner (see Online Protest Filing System). Editable protest forms can be found under General Race Forms. Completed protest forms should be filed with or emailed to the Jury Secretary Evpier@aol.com and the Jury Chair at Ashtonsh1@me.com within the appropriate time limit. This supplements RRS 61.2.

17.2 Protest time limit is 60 minutes after the RC signal vessel docks. RC will post the docking time on the ONB.

17.3 Notices will be posted no later than 30 minutes after the protest time limit to inform competitors of hearings in which they are parties or named as witnesses. Hearings will be held in the protest rooms on the USS Yorktown at the time set forth in the posted notice.

17.4 For the purpose of RRS 64.4(b), the "authority responsible" is the measurer appointed by the organizing authority (CRW Events).

17.5 Notices of protests by the RC, technical committee or the protest committee will be posted to inform boats under RRS 61.1(b).

17.6 On the last scheduled day of racing, a request for redress based on a protest committee decision shall be delivered no later than 30 minutes after the decision was posted. This changes RRS 62.2.

17.7 If the RC posts boats scored OCS, ZFP, UFD, BFD, NSC or TLE on the ONB before the protest time limit, a request for redress based on such a posted score shall be made no later than one hour after the protest time limit. This changes RRS 62.2.

18 SCORING

18.1 When five (5) or fewer races have been completed, a boat's series score will be the total of her race scores. When six (6) races have been completed, a boat's series score will be the total of her race scores excluding her worst score. This changes A2.1.

18.2 Boats scored TLE by the RC, without a hearing, and not subsequently retiring, being penalized or given redress, will be scored points equal to the number of boats finishing within the time limit plus two points. This shall not exceed the total number of boats entered in that class. This supplements RRS A4, A5.1 and A5.2.

18.3 The Offshore ORC Class will be scored using time-on-time ORC ratings. The RC will announce which scoring option will be used prior to the warning.

18.4 If conditions permit, a scoring gate will be used at a designated mark of the course. Times will be taken as boats round the designated mark, which will be scored as one race. The complete race will constitute a second race. Prior to the warning signal, the RC will announce the mark designated as the scoring gate mark.

19 SAFETY REGULATIONS [NP][DP]

19.1 Each competitor is solely responsible for their own safety and, by participation, agrees to sail and use the facilities at their own risk. The CRW Events nor persons assisting with the conduct of races shall be responsible for material damage or personal injury, or death sustained in conjunction with or prior to, during, or after the regatta.

19.2 A boat that retires from a race or leaves the course area between races shall notify the RC before leaving the course area or immediately after arriving ashore on the designated VHF channel or by telephone. Failure to do so may result in protest.

19.3 A boat and its crew shall at all times keep clear of all commercial vessels and shall not maneuver in any manner which would cause a commercial vessel to be unable to sail its proper course or carry out its commercial functions in a normal manner. Boats must take evasive action well in advance of any potentially dangerous situation.

19.3.1 A boat whose actions or maneuvers result in a danger signal (5 or more blasts) from commercial vessels shall be protested by the RC or protest committee. The penalty for breaking this rule may be disqualification from the entire regatta.

19.3.2 A boat without way shall use all means of propulsion to avoid commercial traffic. The boat may continue racing provided: a) the boat does not gain an advantage; b) using the propulsion is the boat's only means of avoiding the commercial traffic; c) the boat submits a report in writing or electronically to the RC by the protest time limit that describes the incident and the boat's actions.

19.4 Each morning, there will be a courtesy announcement on the designated VHF channel and at the end of the day's racing to communicate expected commercial traffic needs to the fleets. Boats are reminded that Charleston Harbor and its approaches have a high level of commercial traffic.

19.5 Before the first warning signal of each day, boats shall have provided to the Organizing Authority their crew list. Crew list updates may be sent via email to info@charlestonraceweek.com.

20 REPLACEMENT OF CREW OR EQUIPMENT

20.1 Unless prior written permission to change crew is granted by the RC, boats shall sail with the same number of crew each day, as registered and conforming to any crew weight limitations, in all races

20.2 Approved changes will be posted on the ONB by 0800 hrs on the day the change will take effect.

21 EQUIPMENT AND MEASUREMENT CHECKS

A boat or equipment may be inspected at any time for compliance with the class rules and SIs. On the water, a boat can be instructed by a member of the RC or technical committee to proceed immediately to a designated area for inspection.

22 PRESS AND SPECTATOR VESSELS [NP]

22.1 All press and official spectator vessels shall be registered with the race organizers during registration. Press and official spectator vessels shall monitor the designated VHF channel for the course they are on and be ready to assist the RaC if so instructed.

22.2 Press and spectator vessels shall not interfere with the racing in any way and remain at least 150 yards from any boat that is racing and on the outside of the race course where as defined by the location of the rounding marks at a distance outside the race course where their wake causes no problem.

22.3 The organizers may appoint one or more photo vessels, which will be allowed within the race course. The position of these vessels shall not be grounds for redress.

22.4 Press and spectator vessels shall display a flag, or other identification symbols as may be required by the race RC.

23 RADIO COMMUNICATION [NP]

23.1 The designated VHF channel for Offshore Circle 5 will be VHF channel 73.

23.2 The RC will broadcast its intent on the designated VHF channel at 0830 and again at 1030.

23.3 The designated channel for check-in will be VHF channel 05A or 1005.

24 PRIZES

24.1 One daily trophy will be awarded in each class for each day of racing. One overall trophy will be awarded in each class for every three boats entered up to a maximum of three trophies per class. The entry that wins the most competitive handicap class will receive recognition on the Palmetto Cup Perpetual Trophy.

24.2 Jubilee Sportsmanship Perpetual Trophy will be awarded to the participant who has displayed outstanding examples of good sportsmanship during Charleston Race Week.

24.3 The Organizing Authority may award additional prizes at their discretion.

25 RISK STATEMENT AND DISCLAIMER OF LIABILITY

25.1 Competitors participate in the regatta entirely at their own risk. (see RRS 3, Decision to Race). The Organizing Authority will not accept any liability for material damage or personal injury or death sustained in conjunction with or prior to, during, or after the regatta.

25.2 The safety of a boat and its crew is the sole and inescapable responsibility of the Skipper who shall ensure that the boat is fully sound, thoroughly seaworthy, and manned by an experienced and physically able crew. Neither the establishment of regulations or inspection of a boat in any way limits or reduces the complete and unlimited responsibility of the Skipper.

25.3 CRW Events, Sponsors of Charleston Race Week, and their employees and volunteers do not accept responsibility for the loss of life or injury to participants or others or for the loss or damage to any vessel in any way or from any cause during or relating to this event.

25.4 The Skipper shall be responsible for the conduct of the crew. In the event of a serious breach of conduct, the destruction of property or the failure to comply with a reasonable request of any Race Official or Committee Member, the Skipper will be responsible for damages. The boat may be subject to protest, which may include disqualification from the regatta.

26 OFFSHORE RACE OFFICIALS

Event/Race Director: Randy Draftz
rdraftz@charlestonyachting.com

Event PRO: Taran Teague
janetaranteague@gmail.com, 703.851.2552

Offshore RO: Bruce Bingman
blocrunner@aol.com, 443.795.1040

Chief Judge: Sarah Ashton
ashtonsh1@me.com, 843.722.3596

ORC OFFSHORE COURSES 1, 1E, 1A • ILLUSTRATION B

Course 1 - 10.5nm (ORC):

Start, leave G25 to starboard, pass through GATE (G21/ R22), pass through GATE (G15/R16), pass through GATE (G21/R22) leave G25 to port, finish.



Course 1E - 13.5 nm

Start, leave G25 to starboard, pass through GATE (G21/ R22), pass through GATE (G13/R14), pass through GATE (G21/R22) leave G25 to port, finish.



Course 1A - 16.5 nm

Start, leave G25 to starboard, pass through GATE (G21/ R22), pass through GATE (G11/R12), pass through GATE (G21/R22) leave G25 to port, finish.

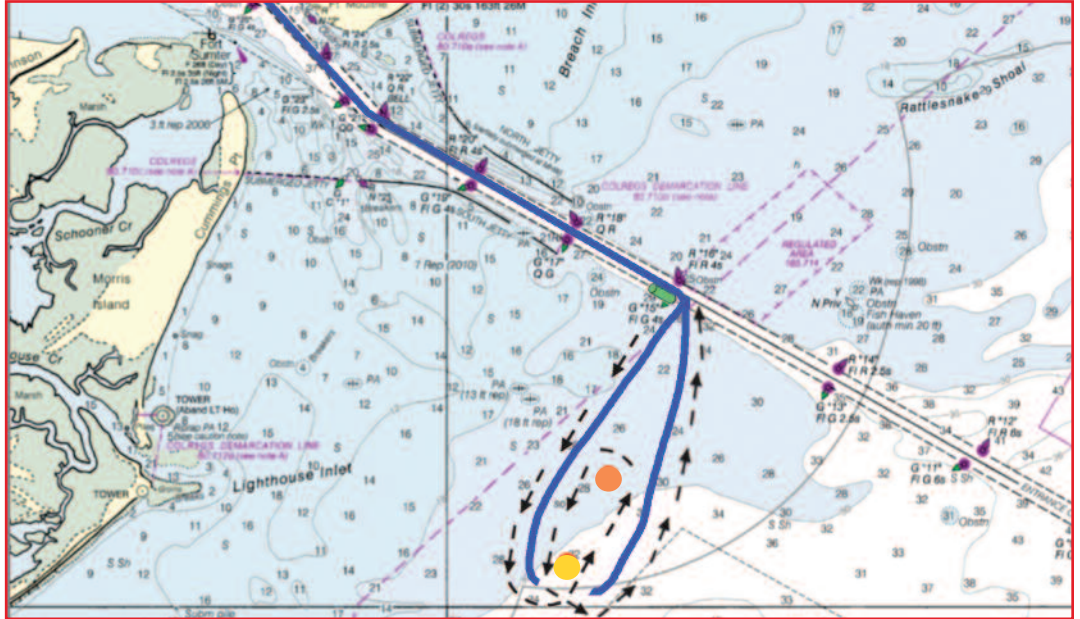


OFFSHORE RACE COURSES 2L, 3L, 4L, 4LA • ILLUSTRATION B

Course 2L - 16.5nm (ORC):

Start, leave G25 to starboard, pass through GATE (G21/ R22), pass through GATE (G15/R16), leave Mark 1 to port, leave mark 2 to port, leave Mark 1 to port, pass through GATE (G15/R16), pass through GATE (G21/ R22), leave G25 to port, finish.

Mark 1 from GATE (G15/R16) 2.0nm, Mark 2 from GATE (G15/R16) 1.0nm.



Course 3L - 19.5nm (ORC):

Start, leave G25 to starboard, pass through GATE(G21/ R22), pass through GATE (G13/R14), leave Mark 1 to port, leave Mark 2 to port, leave Mark 1 to port, pass through GATE (G13/R14), pass through GATE (G21/ R22), leave G25 to port, finish.

Mark 1 from GATE (G13/R14) 2.0nm, Mark 2 from GATE (G13/R14) 1.0nm.



Course 4L - 20.3 nm (ORC):

Start, leave G25 to starboard, pass through GATE (G21/ R22), round R14 to port, round N2 (off Rattlesnake shoal) to port, round Mark 1 to port, round R16 to starboard, pass through GATE (G21R22) to port, finish.

Mark 1 is located at approximately 32°44.55N and 079°46.65W.

Course 4LA - 20.3 nm (ORC):

Start, leave G25 to starboard, pass through GATE (G21/ R22), round R16 to port, round Mark 1 to starboard, round N2 (off Rattlesnake shoal) to starboard, round R14 to starboard, pass through GATE (G21R22) leave G25 to port, finish.

Mark 1 is located at approximately 32°44.55N and 079°46.65W.





SAILING INSTRUCTIONS

PURSUIT CLASS CIRCLE 6

2023 Charleston Race Week - April 20 - 23, 2023
Organizing Authority: CRW Events

The notation '[NP]' denotes that a breach of this rule will not be grounds for protest by a boat. This changes RRS 60.1(a)

1 RULES

1.1 The regatta will be governed by the rules as defined in The Racing Rules of Sailing (RRS) and the Charleston Race Week (CRW) PHRF Policies and Procedures which are listed on the Official Notice Board.

1.2 [The Equipment Rules of Sailing](#) will apply.

1.3 The Pursuit Class sailing on Circle 6 shall comply with the [2023 Offshore Special Regulations - World Sailing](#) Category 4 requirements.

1.4 US Sailing Prescriptions to RRS 63.1 and 63.2 will not apply.

1.5 RRS 44.3 Scoring Penalties will apply.

1.6 Appendix V2, Alternative Penalties, will apply.

1.7 Appendix T, Arbitration, will apply.

2 NOTICES TO COMPETITORS

2.1 Notices to competitors will be posted online on the event Yacht Scoring Official Notice Board. [2023 Charleston Race Week on Yacht Scoring](#) (ONB).

2.2 Any questions concerning the notice of race, these sailing instructions, or any other issue shall be emailed to info@charlestonraceweek.com. All inquiries and responses will be posted on the ONB.

3 CHANGES TO SAILING INSTRUCTIONS

3.1 Any change in the sailing instructions will be posted on the ONB before 0800 on the day it will take effect, except that any change to the schedule of races will be posted by 2000 on the day before it will take place.

3.2 For an on the water change to the sailing instructions, in accordance with RRS 90.2(c): "L" flag shall be displayed with the class flag, if appropriate, and will be followed by a broadcast of the change on the designated VHF channel.

4 SIGNALS MADE ASHORE

4.1 Signals made ashore will be displayed and posted on the ONB.

4.2 When flag "AP" is displayed ashore, "1 minute" is replaced with "not less than 60 minutes" in race signal AP. This changes RRS Race Signals.

5 SCHEDULE OF RACES & EVENTS

5.1 Thursday, April 20

1200-1700 Registration packet pickup at the Tent North of the Museum

1730-1800 Skippers Meeting at the Hangar Deck of USS Yorktown

1800 Local Knowledge at the Hangar Deck

1800-2130 Opening Party at the Hangar Deck

Friday, April 21

1100 Pursuit Class - First warning signal

1800-2100 Fleet Night Out

Saturday, April 22

1100 Pursuit Class - First warning signal

1800-2100 Daily Awards at the Hangar Deck

Sunday, April 23

1100 Pursuit Class - First warning signal

1200 No warning after

1500-1800 Awards Ceremony at the Hangar Deck

5.2 Three (3) races are scheduled. One race shall be completed to constitute a regatta.

6 CLASS FLAGS, STICKERS, & SAIL NUMBERS [NP][DP]

6.1 Class flags will be: Spinnaker A (SA) Blue; Spinnaker B (SB) Pink; Non-Spinnaker (NS) Green/White.

6.2 Event bow stickers shall be attached to both sides of the boat's hull at all times while racing. The event stickers are to be mounted approximately 6-10 inches below deck level and 8-14 inches aft of the bow. Boats failing to display event bow stickers may be subject to protest.

6.3 All boats shall display only the sail numbers under which she has entered, unless prior written approval is obtained from the race committee and posted on the ONB.

7 RACING AREA

The racing area will be Charleston Harbor and the ocean as shown on "Illustration C."

8 COURSES

8.1 The diagram in the SI "Illustration C" shows the intended courses 1, 1E, 1A, 2, 3 and 4. The "E" and "A" courses offer a longer Government mark course.

Course 1 - 10.5 nm (SA), (SB) and (NS): start, leave G25 to starboard, pass through GATE (G21/ R22), pass through GATE (G15/R16), pass through GATE (G21/R22), leave G25 to port, finish.

Course 1E - 13.5 nm (SA), (SB) and (NS): start, leave G25 to starboard, pass through GATE (G21/ R22), pass through GATE (G13/R14), pass through GATE (G21/ R22), leave G25 to port, finish.

Course 1A - 16.5 nm (SA), (SB) and (NS): start, leave G25 to starboard, pass through GATE (G21/ R22), pass through GATE (G11/R12), pass through GATE (G21/R22), leave G25 to port, finish.

Course 2 - 14.5nm (SA), 12.5 nm (SB) and (NS): start, leave G25 to starboard, pass through GATE (G21/ R22), pass through GATE (G15/R16), leave Mark 1 to port, pass through GATE (G15/R16), pass through GATE (G21/ R22), leave G25 to port, finish. Mark 1 from GATE (G15/R16) 2.0 nm (SA), 1.0 nm. (SB) and (NS).

Course 3 - 17.5 nm (SA), 15.5 nm (SB) and (NS): start, leave G25 to starboard, pass through GATE (G21/ R22), pass through GATE (G13/R14), leave Mark 1 to port, pass through GATE (G13/R14), pass through GATE (G21/ R22), leave G25 to port, finish. Mark 1 from GATE (G13/R14) 2.0 nm (SA), 1.0 nm (SB) and (NS).

Course 4 - 19.3 nm (SA), (SB) and (NS): start, leave G25 to starboard, pass through GATE (G21/ R22), round R14 to port, round N2 (off Rattlesnake Shoal) to port, round R16 to starboard, pass through GATE (G21/R22), leave G25 to port, finish.

Course 4A - 19.3 nm (SA), (SB) and (NS): start, leave G25 to starboard, pass through GATE (G21/ R22), round R16 to port round N2 (off Rattlesnake Shoal) to starboard, round R14 to starboard, pass through GATE (G21/R22), leave G25 to port, finish.

8.2 The scheduled course and start times for each boat on each course will be posted on the ONB no later than 0900 on the day of the scheduled race. The course to be sailed will be announced on VHF 11 at 0900 and prior to the warning of the race.

8.3 Placards showing the course to be sailed for each class and the direction to Mark 1 (if used) from gate marks will be displayed on the signal vessel and announced on VHF 11 no later than the warning signal.

9 MARKS

The marks of the Course will be: Start/finish mark is a yellow tetrahedron and a RC vessel. Mark 1 for the (SA) class is an orange tetrahedron. Mark 1 for the (SB) and (NS) classes is a white tetrahedron. Government marks: G"25", G"21", R"22", G"15", R"16", G"13", R"14", G"11", R"12" and N"2" off Rattlesnake Shoal.

10 CHECK IN

Boats intending to race shall check in with the RC via VHF channel 05A or 1005 before their start time. Boats shall confirm the number of persons on board. A boat shall continue to check in until acknowledged by the race committee. [NP][DP]

11 THE START

11.1 The starting area will be in the area bounded by Rebellion Reach to the southwest and the access to the Mt. Pleasant Channel G"1" to the northeast and FL R "130" at the access to the ICW/Sullivan Island Narrows to the east. (Approximately 32°46.00N and 79°52.50W). The Circle 5 and the Pursuit Circle 6 will use the same start/finish line.

11.2 The starting line will be between the staff displaying an orange flag on the signal vessel and the course side of an inflatable mark.

11.3 The RC will use RRS 26 for the first boat to start. All other boats will start based on their assigned pursuit starting time. The RC will not display flags or make sounds after the first boat starts. This changes RRS 26.

0930	Warning for 1st boat to start	Display class flag
0931	Preparatory Signal for 1st boat to start	Display of prep flag
0934	Preparatory flag removed for 1st boat	Prep flag removed
0935	Start of 1st boat	Class flag removed
	Starting times for boats following the 1st boat to start as published & posted	No other flags displayed

11.4 RRS 26 is changed by deleting the words "preparatory signal." The preparatory signal is four (4) minutes before that boat's starting time as identified in SI 11.5.

11.5 The Start Times for the Pursuit Class courses as listed in SI 8.1 will be posted on the document section on the ONB.

11.6 A boat starting later than 10 minutes after her starting signal will be scored Did Not Start (DNS) without a hearing. This change supplements RRS A4 and A5.3.

12 RECALLS

12.1 RRS 29.1 (Individual Recall) is changed. No "X" flag will be used. The RC will make a sound signal for all boats on the course side (OCS) at their start and notify them via VHF channel 11. This changes RRS 29.1.

12.2 Failure of a boat to see or hear her recall notification or the timing or the order of such hails or failure to hail will not be grounds for granting redress. This supplements RRS 60.1(b) and 62.1(a).

13 CHANGE OF THE NEXT LEG OF THE COURSE

The course configuration will not be changed. However, the RC may shorten course at any mark of the course.

14 THE FINISH

14.1 The finish line will be in the vicinity of the harbor start, which is the area bounded by Rebellion Reach to the southwest and the access to the Mt. Pleasant Channel G"1" to the northeast and FL R"130" at the access to the ICW/Sullivan Island Narrows to the east. (Approximately 32°46.00N and 79°52.50W)

14.2 The finish line will be between a staff displaying a checkered flag on the RC vessel at the port end and the course side of a yellow tetrahedron to starboard.

15 PENALTY SYSTEM

Penalty declarations - A boat that has taken a penalty turn(s), a boat wishing to take a post-race penalty, or a boat wishing to retire after finishing in accordance with SI 1.5 shall complete the penalty declaration form and submit via email to the Chief Judge ashtonsh1@me.com and the Jury Secretary evpier@aol.com before the end of the protest time limit.

16 TIME LIMIT

16.1 All boats shall finish by 1600 on Friday & Saturday.

16.2 All boats shall finish by 1500 on Sunday.

16.3 Boats not finishing within the time limit will be scored Time Limit Expiry (TLE), without a hearing. (See Scoring) This change is added to RRS 35, A5.1 and A5.2.

17 HEARING REQUESTS

17.1 Protests and requests for redress or reopening can be filed online via Yacht Scoring in the Owners Corner (see Online Protest Filing System). Editable protest forms can be found under General Race Forms. Completed protest forms should be filed with or emailed to the Jury Secretary Evpier@aol.com and the Jury Chair at Ashtonsh1@me.com within the appropriate time limit. This supplements RRS 61.2.

17.2 Protest time limit is 60 minutes after the RC signal vessel docks. The RC will post the docking time on the ONB.

17.3 Notices will be posted no later than 30 minutes after the protest time limit to inform competitors of hearings in which they are parties or named as witnesses. Hearings will be held on the USS Yorktown at the time set forth in the posted notice.

17.4 For the purpose of RRS 64.4(b), the "authority responsible" is the measurer appointed by the Organizing Authority (CRW Events).

17.5 Notices of protests by the RC, the technical committee or the protest committee will be posted to inform boats under RRS 61.1(b).

17.6 On the last scheduled day of racing, a request for redress based on a protest committee decision shall be delivered no later than 30 minutes after the decision was posted. This changes RRS 62.2.

17.7 If the RC posts boats scored OCS, ZFP, UFD, BFD, NSC or TLE on the Official Notice Board (ONB) before the protest time limit, a request for redress based on such a posted score shall be made no later than one hour after the protest time limit. This changes RRS 62.2.

18 SCORING

18.1 All completed races will be scored. This changes RRS A2.1.

18.2 Boats scored TLE by the RC, without a hearing, and not subsequently retiring, being penalized or given redress, will be scored points equal to the number of boats finishing within the time limit plus two points. This shall not exceed the total number of boats entered in that class. This supplements RRS A4, A5.1 and A5.2.

18.3 Scoring Inquiries shall be made through the ONB under Scoring Inquiries.

19 SAFETY REGULATIONS [NP][DP]

19.1 Each competitor is solely responsible for their own safety and, by participation, agrees to sail and use the facilities at their own risk. The CRW Events nor persons assisting with the conduct of races shall be responsible for damage or personal injury, or death sustained in conjunction with or prior to, during, or after the regatta.

19.2 A boat that retires from a race or leaves the course area without finishing shall notify the RC as soon as possible. Failure to do so may result in protest.

19.3 A boat and its crew shall at all times keep clear of all commercial vessels and shall not maneuver in any manner which would cause a commercial vessel to be unable to maneuver its proper course or carry out its commercial functions in a normal manner.

a.) A boat whose actions or maneuvers result in a danger signal (5 or more blasts) from commercial vessels shall be protested. b.) The penalty for breaking this rule shall be disqualification from the entire regatta. c.) If the wind velocity is low and it is apparent a boat cannot avoid an oncoming commercial vessel, it may start its engine and motor away from the oncoming vessel at an angle of 90 degrees or less. There shall be no forward movement on the course. It shall cut off its motor as soon as it is clear from the oncoming vessel. A boat using its engine in this manner shall inform the RC of its actions upon returning to shore within the protest time limit.

19.4 There will be a courtesy announcement on the designated VHF channel 11 each morning and at the end of the day's racing to communicate expected commercial traffic needs to the fleets. Boats are reminded that Charleston Harbor and its approaches have a high level of commercial traffic.

19.5 Crew lists: Each boat shall provide the Organizing Authority a written list of the crew for each day of the regatta before her preparatory signal. The number of persons sailing on each boat may change each day. You may email the list to info@charlestonraceweek.com.

20 RADIO COMMUNICATIONS [NP]

20.1 Race committee announcements will be over VHF Channel 11.

20.2 The RC will broadcast its intentions for the day at 0830 and 0900.

20.3 The designated channel for check-in will be VHF channel 05A or 1005.

20.4. Failure to receive these notifications shall not constitute grounds for granting redress. This change supplements RRS 60.1(b) and 62.1(a).

21 PRIZES

21.1 One daily trophy will be awarded in each class for each day of racing. One overall trophy will be awarded in each class for every three boats entered up to a maximum of three trophies per class.

21.2 Jubilee Sportsmanship Perpetual Trophy will be awarded to the participant who has displayed outstanding examples of good sportsmanship during Charleston Race Week.

22 RISK STATEMENT AND DISCLAIMER OF LIABILITY

22.1 Competitors participate in the regatta entirely at their own risk. (see RRS 3, Decision to Race). The Organizing Authority will not accept any liability for material damage or personal injury, or death sustained in conjunction with or prior to, during, or after the regatta.

22.2 The safety of a boat and it's crew is the sole and inescapable responsibility of the skipper who shall ensure that the boat is fully sound, thoroughly seaworthy, and manned by an experienced and physically able crew. Neither the establishment of regulations nor inspection of a boat in any way limits or reduces the complete and unlimited responsibility of the skipper.

22.3 CRW Events, Sponsors of the Charleston Race Week, and their employees and volunteers do not accept responsibility for the loss of life or injury to participants or others, or for the loss or damage to any vessel in any way or from any cause during or relating to this event.

22.4 The skipper shall be responsible for the conduct of the crew. In the event of a serious breach of conduct, the destruction of property or the failure to comply with a reasonable request of any race official or committee member, the skipper will be responsible for damages. The boat may be subject to protest which, may include disqualification from the regatta.

23 PURSUIT RACE OFFICIALS

Event/Race Director: **Randy Draftz**
rdraftz@charlestonyachting.com

Event PRO: **Taran Teague**
janetaranteague@gmail.com
703.851.2552

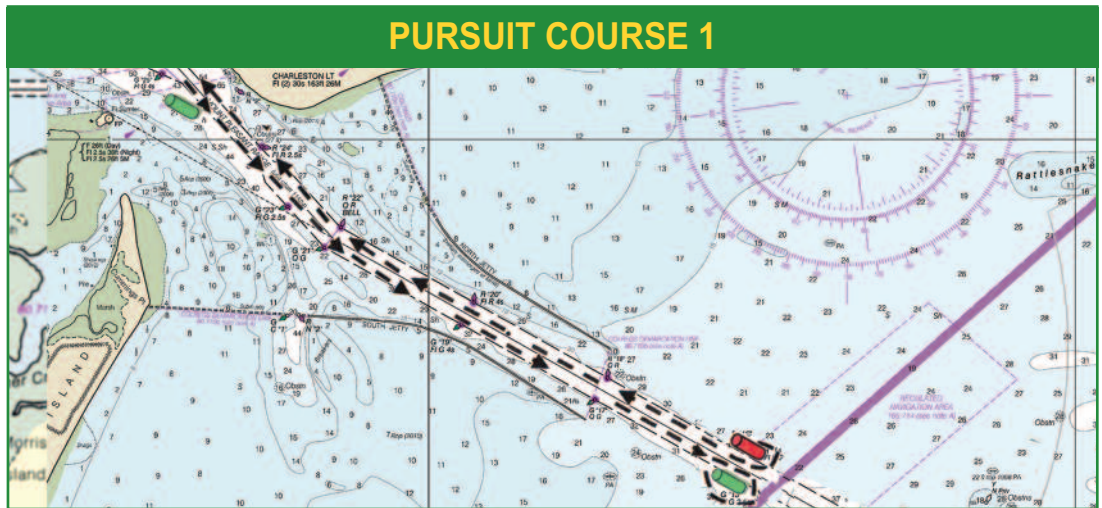
Circle 6 RO: **Ray Redniss**
rredniss@gmail.com

Chief Judge: **Sarah Ashton**
ashtonsh1@me.com
843.722.3596

PURSUIT RACE COURSES 1, 1E, 1A • ILLUSTRATION C

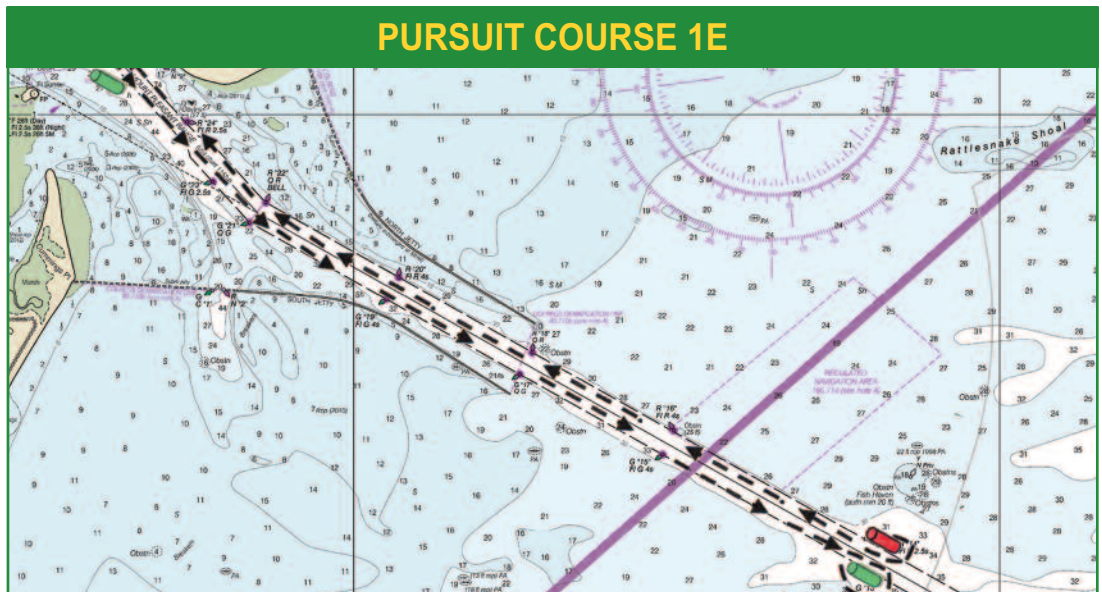
Course 1 - 10.5nm (SA), (SB) and (NS)

Start, leave G25 to starboard, pass through GATE (G21/ R22), pass through GATE (G15/R16), pass through GATE (G21/R22) leave G25 to port, finish.



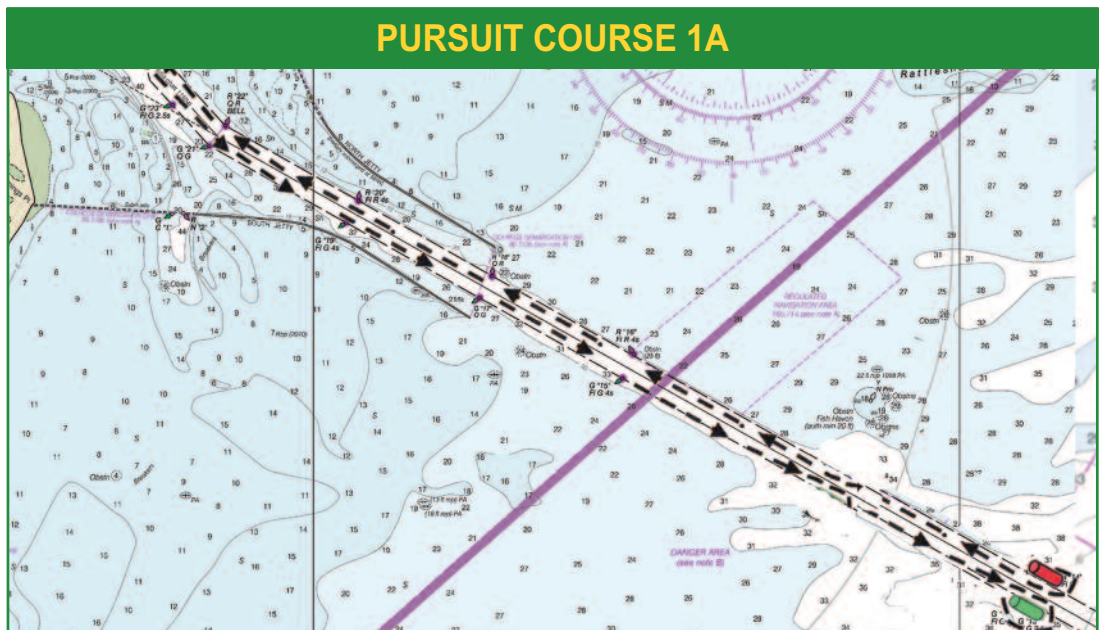
Course 1E - 13.5 nm (SA), (SB) and (NS)

Start, leave G25 to starboard, pass through GATE (G21/ R22), pass through GATE (G13/R14), pass through GATE (G21/R22) leave G25 to port, finish.



Course 1A - 16.5 nm (SA), (SB) and (NS)

Start, leave G25 to starboard, pass through GATE (G21/ R22), pass through GATE (G11/R12), pass through GATE (G21/R22) leave G25 to port, finish.



PURSUIT RACE COURSES • ILLUSTRATION C

Course 2 - 14.5nm (SA), 12.5nm (SB), and (NS):

Start, leave G25 to starboard, pass through GATE (G21/ R22), pass through GATE (G15/R16), leave Mark 1 to port, pass through GATE (G15/R16), pass through GATE (G21/ R22), leave G25 to port, finish.

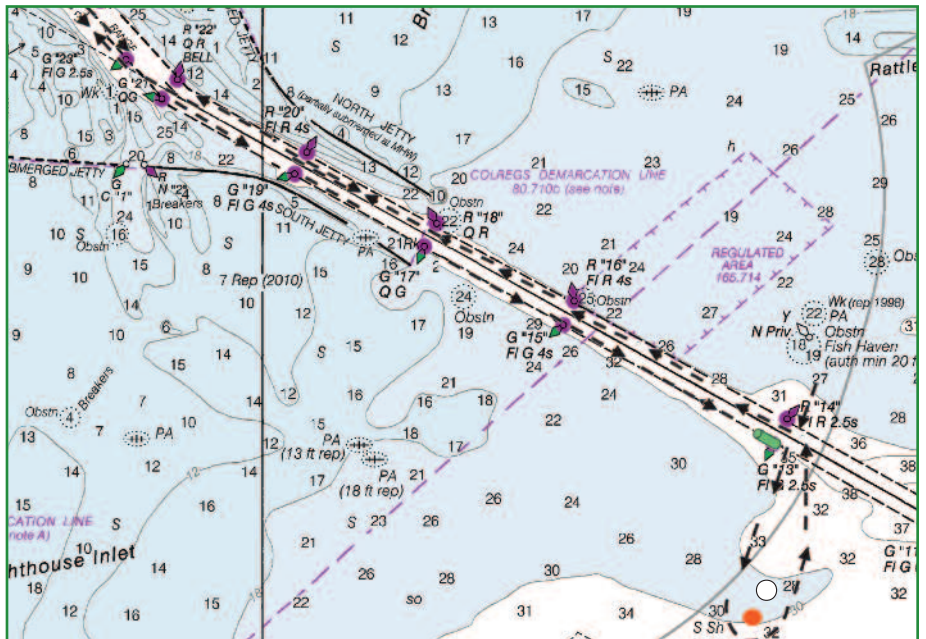
Mark 1 from GATE (G15/R16) 2.0nm (SA), 1.0nm (SB) and (NS)



Course 3 - 17.5nm (SA), 15.5nm (SB), and (NS):

Start, leave G25 to starboard, pass through GATE (G21/ R22), pass through GATE (G13/R14), leave Mark 1 to port, pass through GATE (G13/R14), pass through GATE (G21/ R22), leave G25 to port, finish.

Mark 1 from GATE (G13/R14) 2.0nm (SA), 1.0nm (SB) and (NS)



Course 4 - 19.3 nm (SA), (SB), and (NS):

Start, leave G25 to starboard, pass through GATE (G21/ R22), round R14 to port, round N2 (off Rattlesnake shoal) to port, round R16 to starboard, pass through GATE (G21R22) leave G25 to port, finish.

Course 4A - 19.3 nm (SA), (SB), and (NS):

Start, leave G25 to starboard, pass through GATE (G21/ R22), round R16 to port, round N2 (off Rattlesnake shoal) to starboard, round R14 to starboard, pass through GATE (G21R22) leave G25 to port, finish.

