



# INTERNATIONAL ETHELLES CLASS 2023 WORLD CHAMPIONSHIP NOTICE OF RACE (NOR)

**April 16<sup>th</sup> to 21<sup>st</sup>, 2023**

Etchells Fleet 20 Biscayne Bay is the organizing authority (OA).

The Biscayne Bay Yacht Club (BBYC), Coral Reef Yacht Club (CRYC) and Shake-A-Leg Miami (SALM) are the host clubs. The BBYC Regatta Committee is designated as the race committee (RC).

## **1 RULES**

- 1.1 The event is governed by the rules as defined in *The Racing Rules of Sailing* (RRS).
- 1.2 RRS 44.1 and RRS 44.2 are changed. See NOR 14 PENALTY SYSTEM.
- 1.3 RRS APPENDIX P applies with the Two-Turns Penalty replaced by the One-Turn Penalty, except the RRS P2.3 does not apply and RRS P2.2 is changed so that it applies to any penalty after the first one.
- 1.4 [DP] International Etchells Association Class Rules.
- 1.5 The US Sailing prescriptions that apply are detailed in *APPENDIX–US SAILING PRESCRIPTIONS* of this NOTICE OF RACE (NOR).
- 1.6 RRS APPENDIX T, ARBITRATION will be used as modified in the sailing instructions.
- 1.7 If there is a conflict between languages the English text takes precedence.
- 1.8 [NP] Bow numbers will be assigned and supplied by the OA and fixed to each participating boat prior to inspection. They shall be affixed to the hull according to the instructions provided by the OA and shall be retained on both sides of the hull throughout the championship. Boats failing to follow these requirements are subject to protest only by the RC or event Technical Committee (TC).
- 1.9 For the purposes of Class Rule C.10.2.(b), not more than 1 mainsail, 2 headsails and 2 spinnakers shall be presented for measurement and used during the event.
- 1.10 Each sail presented shall be measured and approved by the Measurer or delegated Equipment Inspector immediately prior to the championship and shall not thereafter be recut or altered during the championship. After such measurement, repairs to sails pursuant to all applicable rules are permissible only upon prior approval of the international jury.
- 1.11 Where a boat is using sails with a different sail number than that of the boat's hull, the skipper will inform the OA before commencement of racing. All sails being used must exhibit the same sail number.
- 1.12 If, through no fault of its personnel, a boat's hull or spar or sail is rendered incapable of continuing the series, the skipper may petition the international jury for permission to substitute a replacement hull or spar or sail for the remainder of the series.
- 1.13 [DP] A boat shall not carry any unreasonable quantities of water or anything else for the purpose of adding ballast. The amount of water that is stored in containers or bottles which is permitted to be carried should be sufficient for the crew for drinking purposes during the day's racing, to this end a maximum of 10 litres of water per boat is acceptable.

## **2 SAILING INSTRUCTIONS**

- 2.1 The sailing instructions (SI) will be available on the Yacht Scoring website on 1 April, 2023 at [www.yachtscoring.com](http://www.yachtscoring.com).

### **3 COMMUNICATIONS**

- 3.1 The online official notice board (ONB) is located at [www.yachtscoring.com](http://www.yachtscoring.com). The race office will be at BBYC.
- 3.2 [DP] All boats shall carry a VHF radio capable of communicating on US VHF Marine Channels.
- 3.3 On the water, the RC will make courtesy broadcasts to competitors on VHF radio. The channel will be stated in the SIs.
- 3.4 [DP] The use of mobile/cell phones, or any device capable of sending and/or receiving external electronic communication, data and/or connecting to the internet is prohibited after the first Warning Signal on each race day until the boat has completed racing that day, except in an emergency threatening the safety of any member of the crew or the flotation of the boat.

### **4 ELIGIBILITY AND ENTRY**

- 4.1 The event is open to all boats of the Etchells Class, with a valid measurement certificate.
- 4.2 The event is scheduled for a maximum of eighty (80) boats.
- 4.3 Entry allocation is 40% for fleet qualifying series and qualifying events per the IECA Championship Event Manual. Qualification to enter shall be verified by the entrant's Fleet Captain prior to the entry being accepted. No entry can be considered final until the entry's eligibility has been verified by the OA with the IECA Secretariat.
- 4.4 Boats may enter the event by registering online at [www.yachtscoring.com](http://www.yachtscoring.com).
- 4.5 To be considered an entry in the event, a boat shall complete all registration requirements and pay all fees.
- 4.6 Late entries will be accepted at the discretion of the OA.
- 4.7 Prior to racing, each skipper and crew member shall be weighed at Coral Reef Yacht Club on Sunday, 16 April between 0830 and 1200 and at other times as indicated on the Schedule at NOR 9.2, as required by Class Rule C2. The boat shall sail with the same crew throughout the event.

### **5 FEES**

- 5.1 The Entry fees are \$2000 USD for a three-person crew and \$2400 USD for a four-person crew and shall be paid in accordance with the online entry system.
- 5.2 The closing date for entries will be 1159 on Wednesday, 15 March.
- 5.3 No refunds for cancellations of registration will be made after Wednesday, 15 March.
- 5.4 Late entries may only be accepted at the discretion of the OA. The late entry fee is \$500 USD, in addition to the basic entry fee.
- 5.5 The entry fee includes:
  - (a) Launching at BBYC, CRYC or SALM on or after Wednesday, 12 April.
  - (b) In-water berthing at BBYC, CRYC or SALM from Wednesday, 12 April to Saturday, 22 April.
  - (c) Haul out at BBYC, CRYC or SALM on Saturday, 22 April.
  - (d) Social tickets for each crew member at the following events:
    - (i) Opening ceremony
    - (ii) Daily Prizegiving
    - (iii) Mid-week Party
    - (iv) Awards Dinner & Party

## 6 CREW LIMITATIONS

- 6.1 All crew shall all be members of the International Etchells Class Association. The Skipper shall be an Owner Member.
- 6.2 In addition to NOR 6.1 Guest Skippers may enter the event. A Guest Skipper is a Skipper, but for the purposes of these guidelines being a Non-Owner, the Guest Skipper must:
- be age 29 or under as of 1 January of the year of the event; and
  - borrow or charter a boat from an Owner or entity in good standing in the Fleet; and
  - be at least a Non-Owner Class Member
- 6.3 The Skipper:
- Shall be an Owner Member of the Fleet they represent and be so registered with the Etchells Class National Association prior to the first race of their Fleet's qualification races;
  - Shall have sailed as a Skipper in their Fleet's Worlds qualification races unless approved by the IGC.
  - Shall not have attempted to qualify for the applicable World Championship as a Skipper, in a fleet other than the one being represented during the six months prior to the first race of the World Championship.
  - May, if belonging to more than one Fleet, compete for qualification in one Fleet only, which shall be the Fleet sailing the earliest qualifying series, unless such Skipper advises the Fleet Captain of such Fleet in writing before the first race in that qualifying series that they will not be competing for qualification in that series.

## 7 ADVERTISING

- 7.1 All boats shall comply with Class Rule C.4.

## 8 QUALIFYING SERIES AND FINAL SERIES

- 8.1 The event will be a single series championship.

## 9 SCHEDULE

- 9.1 The times shown in the table below (NOR 9.2) are US Eastern Daylight Time (EDT).

9.2

Date	Time	First Warning Signal	Event
Wed. 12 April	0900-1600		Registration at BBYC Boat measurement at BBYC, CRYC, SALM Sail measurement at SALM
Thu. 13 April	0900-1600		Registration at BBYC Boat measurement at BBYC, CRYC, SALM Sail measurement at SALM
Fri. 14 April	0900-1600		Registration at BBYC Boat measurement at BBYC, CRYC, SALM Sail measurement at SALM
Sat. 15 April	0900-1600		Registration at BBYC Boat measurement at BBYC, CRYC, SALM Sail measurement at SALM
Sun. 16 April	0830-1200 1800-1900	1255	Crew Weigh In – CRYC Practice Race Opening Ceremony at BBYC
Mon. 17 April	0900-0915 1700-1800	1155	Competitor's Briefing Worlds Race 1 Worlds Race 2 Daily Prizegiving at CRYC
Tue. 18 April	0900-0915	1155	Competitor's Briefing Worlds Race 3

	1700-1800		Worlds Race 4 Daily Prizegiving at CRYC
Wed. 19 April	0730-0900 0900-0915  1830-1900 1900-2100	1155	Mid-week Re-Weigh In at BBYC Competitor's Briefing Worlds Race 5 Worlds Race 6 Daily Prizegiving at Shake-A-Leg Miami Mid-week Party at Shake-A-Leg Miami
Thu. 20 April	0900-0915  1700-1800	1155	Competitor's Briefing Worlds Race 7 Worlds Race 8 Daily Prizegiving at BBYC
Fri. 21 April	0900-0915  1800-2200	1155	Competitor's Briefing Worlds Race 9 Awards Dinner at Shake-A-Leg Miami
Sat. 22 April			Reserve Day; Haul Out

## 10 EQUIPMENT INSPECTION

- 10.1 Each boat shall produce a valid measurement certificate and measurement forms.
- 10.2 Official Registration and Measurement are available on Wednesday, 12 April, through Saturday, 15 April, from 0900 – 1600 each day or such earlier time approved by the OA.
- 10.3 Boats may be inspected at any time.
- 10.4 After measurement until completion of racing, no boat, sail or any item of measured equipment shall leave the venue without prior written permission given by the OA and posted on the ONB.

## 11 CLOTHING

- 11.1 The total weight per person of worn or carried clothing and equipment, including footwear and other clothing worn below the knee, shall not exceed 10 kg. The total combined weight carried by the crew shall not exceed 30Kg. This changes RRS 50.1 (b).

## 12 VENUES

- 12.1 NOR APPENDIX – SHORE VENUES shows the plan of the event shore venues.
- 12.2 NOR APPENDIX – RACE AREA shows the location of the racing area.

## 13 COURSES

- 13.1 The courses to be sailed will be windward / leeward configuration as defined in the sailing instructions.

## 14 PENALTY SYSTEM

- 14.1 The first two sentences of RRS 44.1 are changed to: "A boat may take a One-Turn Penalty when she may have broken one or more rules of Part 2 or RRS 31 in an incident while racing. However, when she may have broken one or more rules of Part 2 while in the zone around a mark other than a starting mark, her penalty shall be a Two-Turns Penalty".
- 14.2 In RRS 44.2 insert after the first sentence: "However, if Mark 1b (spreader mark) is set, a boat may take a penalty for an incident in the zone around Mark 1a or on the leg between Mark 1a and Mark 1b, as soon as possible after leaving the zone around Mark 1b".
- 14.3 An international jury will be appointed in accordance with RRS 91(b). There shall be no appeal from the decisions of the international jury, RRS 70.5.

## **15 SCORING**

- 15.1 Nine (9) races are scheduled.
- 15.2 Six (6) races are required to be completed to constitute a series.
- 15.3 When fewer than seven (7) races have been completed, a boat's series score will be the total of her race scores.
- 15.4 When seven (7) or more races have been completed, a boat's series score will be the total of her races excluding her worst score.

## **16 SUPPORT PERSON VESSELS**

- 16.1 [DP] *Support persons* and their vessels shall stay outside areas where boats are racing from the time when the line flags go up the first time of the day before the first Warning Signal of the day until racing has been concluded for the day. Between races, *support persons* shall not approach, communicate with or transfer provisions or equipment to or from their supported boats unless in a medical or emergency requirement threatening the health of the crew or the flotation of the boat.
- 16.2 [DP] *Support persons* shall register at the Race Office and their vessels display identifying flags issued by the OA for a fee of \$50 USD.
- 16.3 [DP] All *support persons* shall carry a marine VHF radio while on the water, monitor the race committee and agree to assist the race committee if directed to do so.
- 16.4 [DP] No drone operation or filming will be allowed over the area where boats are racing other than the equipment of the third-party media company, T2PTV, that has been contracted by the OA to provide such services.

## **17 CHARTERED OR LOANED BOATS**

- 17.1 [DP] In accordance with RRS Appendix G3, a chartered or loaned boat may carry national letters or a sail number in contravention of her class rules, provided that the race committee has approved her sail identification before the first race.

## **18 BERTHING**

- 18.1 [DP] Boats shall be kept in their assigned area while in the BBYC, CRYC or SALM harbours.

## **19 HAUL-OUT RESTRICTIONS**

- 19.1 [DP] Boats shall not be hauled out during the event except with and according to the terms of prior written permission of the TC.

## **20 DIVING EQUIPMENT AND PLASTIC POOLS**

- 20.1 [DP] Underwater breathing apparatus and plastic pools or their equivalent shall not be used around boats while afloat.

## **21 MEDIA RIGHTS AND DATA PROTECTION**

- 21.1 By participating in this event, competitors automatically grant to the OA and the event sponsors the right, in perpetuity, to make, use, and show, at their discretion, any photography, audio and video recordings, and other reproductions of them made at the venue or on the water from the time of their arrival at the venue, until their final departure, without compensation.
- 21.2 By entering this event, you agree to provide personal data to the OA. The OA will process your personal data for the purpose of administering the event. Your personal information will be stored and used in accordance with the OA's privacy policy. When required by the rules, personal information may be shared US Sailing and/or World Sailing. The results of the events and the outcome of any hearing or appeal may be published.

## **22 RISK STATEMENT**

- 22.1 Before participating in this event, every owner, competitor and support person shall sign a Waiver of Liability

on Yacht Scoring.

- 22.2 Competitors participate in this event entirely at their own risk. See rule 3, Decision to Race. The race organizers (organizing authority, race committee, protest committee, host club, sponsors, or any other organization or official) will not accept any liability for material damage or personal injury, or death sustained in conjunction with or prior to, during or after the events.
- 22.3 RRS 3 states: 'The responsibility for a boat's decision to participate in a race or to continue to race is hers alone.' By participating in this event each competitor agrees and acknowledges that sailing is a potentially dangerous activity with inherent risks. These risks include strong winds and rough seas, sudden changes in weather, failure of equipment, boat handling errors, poor seamanship by other boats, loss of balance on an unstable platform and fatigue resulting in increased risk of injury. **Inherent in the sport of sailing is the risk of permanent, catastrophic injury or death by drowning, trauma, hypothermia or other causes.**

## 23 INSURANCE

- 23.1 Each participating boat shall be insured with valid third-party liability insurance with a minimum cover of \$300,000 USD per incident or the equivalent.

## 24 PRIZES

- 24.1 Overall series perpetual trophies will be awarded as follows:

The Founders Trophy, an antique silver bowl, for the overall World Championship winner – given by Mary Etchells.

C Stanley Ogilvy Masters Trophy, an antique sextant and box, for the winner of the Masters' Division (Masters' category is defined as helmsman 50 years of age or older) – given by the Members and Governors of the Class to honour Stan Ogilvy's 17 years of service to the Class as Chairman of the Technical Committee.

Robert W Sides Seniors Trophy, a Lucite boat on marble block, for the winner of the Seniors' Division (Seniors' category is defined as helmsman 60 years of age or older – should fewer than two skippers qualify for this division the age limit for the year will be 55 years or older) – given by US Etchells Fleet 4.

Grand Masters Trophy, a crystal plate mounted on a stainless-steel base given by the International Etchells Class Association of Australia in honour of Ian Kingsford Smith, awarded to the skipper and crew with best result at the World Championship with a combined age of 150 years for a three-person crew or 200 years for a four-person crew, (ages being as at midnight on the last day of registration).

Bill Munster Sportsmanship Trophy, a ceramic tile with a picture of an Etchells mounted on a wooden plaque, presented by Jim DeWitt. To be awarded annually to the competitor who in the eyes of the Organizing Authority, Race Committee and International Jury exhibits the most sportsmanlike qualities of the event.

Corinthian Cup, a pewter cup on a wood base, given by Patricia Stadel in recognition of outstanding achievement by Corinthian sailors to be awarded to the so defined (ISAF Category 1) Corinthian skipper and crew achieving the best result in the International Etchells World Championship.

Best Female Helm Trophy, a wooden backing with raised brass Etchells half hull with sails, presented by US Detroit Fleet #7. Awarded to the female helm achieving the best result.

Next Generation Trophy, a silver cup, presented by the friends of Hans Fogh. Awarded to the skipper and crew, all 29 or younger as of the first day of January, 2023, achieving the best result.

Bill Bennett Crew Trophy, a wooden plaque, presented by Fleet 13. Awarded to the winning crew.

Bill Steele Trophy, awarded to the crew with the lowest average age, given by the family of Bill Steele.

Individual race perpetual trophies will be awarded as follows:

- Race 1: A silver tray for the first race winner – given by Etchells Fleet 6, Newport Beach, California, USA.
- Race 2: A half model, the Peter Tirion/Etchells Association of Canada perpetual trophy for the second race winner – given by the Royal Canadian Yacht Club, Toronto, Ontario, Canada.

- Race 3: A photo engraved plaque of an Etchells under spinnaker on timber backing for the third race winner – given by the Brisbane Etchells Fleet, Australia.
- Race 4: A half model for the fourth race winner – given by US Etchells Fleet 4 and the Eastern Yacht Club, Marblehead, Massachusetts, USA.
- Race 5: A silver bowl and stand for the fifth race winner – given by US Etchells Fleet 12 and the St Francis Yacht Club, San Francisco, California, USA.
- Race 6: A silver plate, the American Yacht Club Centennial for the sixth race winner - given by the American Yacht Club, Rye, New York, USA.
- Race 7: A framed symbolic Kauri wood carving. Donated by the Gulf Harbour Yacht Club, Gulf Harbour, New Zealand.
- Race 8: A crystal cube containing three-dimensional images of two Etchells for the eighth race winner, the Jim Annand Trophy – given by the International Etchells Class Association of Australia in honor of Jim Annand.
- Race 9: A half model for the ninth race winner - given by the Cowes Fleet in honor of Cowes Fleet member Ante Razmilovic, the winner of the first race nine at the 2002 World Championship.

Other trophies will be awarded at the discretion of the Organising Authority.

## 25. FURTHER INFORMATION

25.1 The Fleet 20 website [www.etchellsfleet20.org](http://www.etchellsfleet20.org) will provide additional information.

25.2 Official Notice Board website at Yacht Scoring: [www.yachtscoring.com](http://www.yachtscoring.com)

25.3 For inquiries about the 2023 Etchells Biscayne Bay Series:

Regatta Co-Chairman: Jeff Nehms – [racing@etchellsfleet20.org](mailto:racing@etchellsfleet20.org)

Regatta Co-Chairman: Chris Lanza – [CFL@lantalaw.com](mailto:CFL@lantalaw.com)

BBYC Boat Storage: Ezra Culver – [racing@etchellsfleet20.org](mailto:racing@etchellsfleet20.org)

Regatta Committee Chairman: Bruce Harper – [wbruceharpjr@hotmail.com](mailto:wbruceharpjr@hotmail.com)

Principal Race Officer: Dave Brennan – [david@redsailtld.com](mailto:david@redsailtld.com)

International Jury Chair: Ruth Miller – [ruthmillerlaw@gmail.com](mailto:ruthmillerlaw@gmail.com)

Biscayne Bay YC Office: 305-858-6303 or [gm@biscaynebayyachtclub.com](mailto:gm@biscaynebayyachtclub.com)

Coral Reef YC Office: 305-858-1733 or [vanburen@coralreefyachtclub.org](mailto:vanburen@coralreefyachtclub.org)

Shake-A-Leg Miami Office: 305-858-5550 or [www.shakealegmiami.org](http://www.shakealegmiami.org)

US Sailing Center Office: 305-854-1058 or [www.usasailingcentermiami.org](http://www.usasailingcentermiami.org)

The notation [DP] in a rule in the NOR means that the penalty for a breach of that rule may, at the discretion of the international jury, be less than disqualification. The notation [NP] in a rule means that a boat may not protest another boat for breaking this rule.

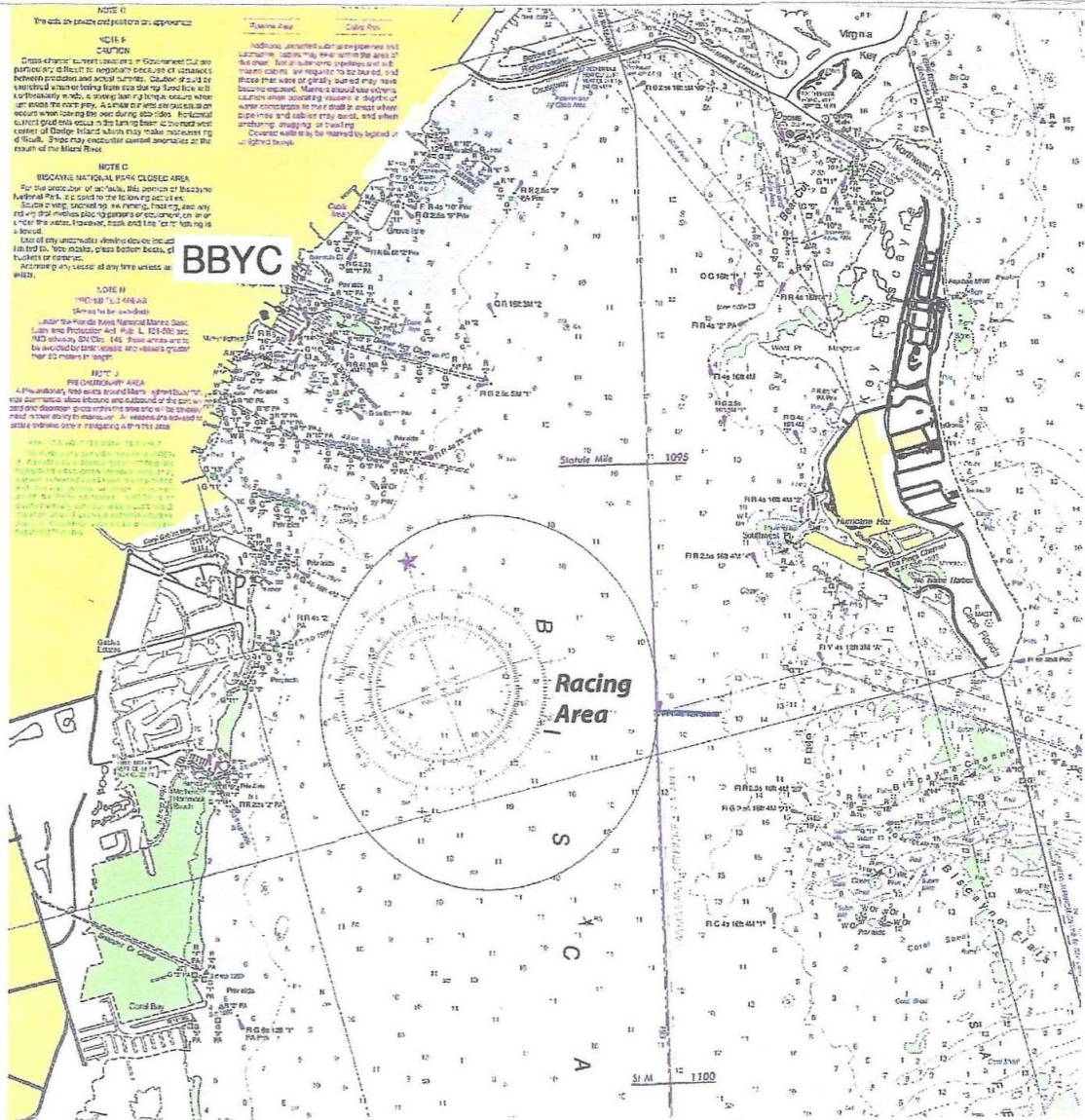


**APPENDIX – SHORE VENUES**





**APPENDIX – RACE AREA**



## **APPENDIX – US SAILING PRESCRIPTIONS**

### **US SAILING PRESCRIPTIONS**

The following US Sailing Prescriptions shall apply:

RRS **60.3.**: US Sailing prescribes that: (b) request redress for a boat or call a hearing to consider redress;

RRS **61.4.**: US Sailing prescribes that no fees shall be charged for protests or request for redress.

### **RRS 67.**

US Sailing prescribes that:

- (a) A boat that retires from a race or accepts a penalty does not, by that action alone, admit liability for damages.
- (b) A PC shall find facts and make decisions only in compliance with the rules. No PC or US Sailing appeal authority shall adjudicate any claim for damages. Such a claim is subject to the jurisdiction of the courts.
- (c) A basic purpose of the rules is to prevent contact between boats. By participating in an event governed by the rules, a boat agrees that responsibility for damages arising from any breach of the rules shall be based on fault as determined by application of the rules, and that she shall not be governed by the legal doctrine of 'assumption of risk' for monetary damages resulting from contact with other boats.

### **RRS 76.1.**

US Sailing prescribes that an OA or RC shall not reject or cancel the entry of a boat or exclude a competitor eligible under the notice of race and sailing instructions for an arbitrary or capricious reason or for reason of race, color, religion, national origin, gender, sexual orientation, or age.