



INTERNATIONAL ETHELLS CLASS FLEET 20 BISCAYNE BAY 2023 WORLD CHAMPIONSHIP LOCAL QUALIFYING EVENT October 15th, 2022

SAILING INSTRUCTIONS (SI)

Etchells Fleet 20 is the organizing authority (OA), the Biscayne Bay Yacht Club (BBYC) is the host club, and the BBYC Regatta Committee is designated as race committee (RC).

1 RULES:

- 1.1 The event will be governed by the *rules* as defined in *The Racing Rules of Sailing* (RRS).
- 1.2 RRS 44.1 and 44.2 are changed. See SI 13 PENALTY SYSTEM.
- 1.3 [DP] International Etchells Association Class Rules
- 1.4 The US Sailing prescriptions that apply are detailed in APPENDIX – US SAILING PRESCRIPTIONS of the SI.
- 1.5 For the purposes of Class Rule C.10.2.(b), not more than 1 mainsail, 2 headsails and 2 spinnakers shall be used during the event.

2 CHANGES TO SAILING INSTRUCTIONS

- 2.1 Any change to the sailing instructions will be posted before 0900 on the day it will take effect, except that any change to the schedule of races will be posted by 2000 on the day before it will take effect.

3 COMMUNICATION WITH COMPETITORS

- 3.1 Notices to competitors will be posted on the Official Notice Board (ONB) located at: www.yachtscoring.com
- 3.2 The Race Office is in the Biscayne Bay Yacht Club (BBYC).
- 3.3 On the water, the race committee intends to monitor and communicate with competitors on VHF channel 72.
- 3.4 While racing, except in emergency, a boat shall not make voice or data transmissions and shall not receive voice or data communication that is not available to all boats.

4 SIGNALS MADE ASHORE

- 4.1 Signals made ashore will be displayed from the south flagpole at Biscayne Bay Yacht Club.
- 4.2 When flag AP is displayed ashore, '1 minute' is replaced with 'not less than 60 minutes' in RACE SIGNAL AP.

5 SCHEDULE AND EVENTS

- 5.1 Schedule:

Date	Time	Event
Friday, October 14, 2022	09:00-16:00	MarkSetBot and TracTrac training at SALM
Saturday, October 15, 2022	09:00	Competitor's Briefing
	10:55	First warning (5 races scheduled)
	16:00	Beer at BBYC

6 CLASS FLAG

- 6.1 The class flag will be the Etchells Class insignia on a white background.

7 RACING AREA

- 7.1 The racing area will be on Biscayne Bay approximately 2 nm south of Biscayne Channel Mark G'1' (Fl G 2.5s 5m "1"). See SI **APPENDIX - RACING AREA**.

8 COURSES

- 8.1 The format of the courses will be windward/leeward. See SI **APPENDIX - COURSES**.
- 8.2 The course number and the approximate magnetic bearing and distance to the first mark will be posted on the signal vessel prior to the warning signal with a VHF announcement.
- 8.3 Course 4: Start-Windward-Leeward-Windward-Leeward-Finish.
- 8.4 There will be an offset mark at approximately three boat lengths at 90 degrees to port of the weather mark.
- 8.5 Marks of the course are to be left to port, except for a leeward gate where boats are to pass between gate marks in the direction from the prior mark and may leave the marks in either direction.
- 8.6 In the presence of a single weather or leeward mark, the mark is to be left to port.

9 MARKS OF THE COURSE

- 9.1 Mark 1a will be an **orange** MarkSetBot inflatable mark.
- 9.2 Mark 1b (offset) will be an **orange** MarkSetBot inflatable mark.
- 9.3 Marks 2s and 2p will be **yellow** MarkSetBot inflatable marks.

10 THE START

- 10.1 Boats will **CHECK-IN** each day prior to the first warning signal by sailing on starboard past the stern of the race committee signal vessel, until the boat receives an acknowledging hail of her bow number from the race committee.
- 10.2 The starting line will be between a staff displaying an **orange** flag on a vessel at the starboard end and a staff displaying an **orange** flag on a vessel at the port end, or the course side of an inflatable mark.
- 10.3 A boat starting later than 4 minutes after her starting signal will be scored Did Not Start without a hearing. This changes rules A5.1 and 5.2.
- 10.4 If any part of a boat's hull is on the course side of the starting line at the starting signal and the boat is identified, the race committee will attempt to broadcast her bow number. Failure to identify a boat, make a broadcast, a boat failing to hear a broadcast or the order and interval of transmission will not be grounds for redress. This changes rule 62.1(a).

11 CHANGE OF THE NEXT LEG OF THE COURSE

- 11.1 The Race Committee may change the location of the weather up to 10 degrees and 0.1 nm without Race Signals. This changes RRS 33. Any changes will be announced on VHF channel 72.
- 11.2 To change the next leg of the course, rule 33, the race committee will move the original mark(s) or finish line.

12 THE FINISH

- 12.1 The finishing line will be between a staff displaying a **blue** flag on a race committee vessel and a **green** inflatable mark on the starboard side of the race committee vessel on the opposite side of the starting line.

13 PENALTY SYSTEM

- 13.1 The first two sentences of RRS 44.1 are changed to: "a boat may take a One-Turn Penalty when she may have broken one or more rules of Part 2 or RRS 31 in an incident while racing. However, when she may have broken one or more rules of Part 2 while in the zone around a mark other than a starting mark, her penalty shall be a Two-Turn Penalty".
- 13.2 In RRS 44.2 insert after the first sentence: "However, if Mark 1a (offset mark) is set, a boat may take a penalty for an incident in the zone around Mar k1 or on the leg between Mark 1 and Mark 1a , as soon as possible after leaving the zone around Mark 1a".

14 TIME LIMITS

- 14.1 If no boat has passed the weather mark within **15** minutes after the start, or if no boat sails the course and finishes within **90** minutes, the race shall be abandoned. This changes rules A5.1 and A5.2.

- 14.2 Boats failing to finish within **15** minutes after the first boat sails the course and finishes will be scored TLE. The score for TLE will be one point more than the last boat finishing within the time limit for the race. This changes rules 35, A5.1 and A5.2.

15 HEARING REQUESTS

- 15.1 Protests and requests for redress or reopening of hearings shall be delivered online to the event website on Yacht Scoring by logging into the owner's corner and filling out the online form. This changes rules 61.3 and 62.2.
- 15.2 The protest time limit shall be ninety (90) minutes after the finish of the last boat of the last race of the day, or after racing is abandoned for the day, and will be posted on the ONB on Yacht Scoring.
- 15.3 Notices will be posted on the ONB no later than 15 minutes after the protest time limit to inform competitors of hearings in which they are parties.
- 15.4 The protest desk will be located on the first floor of the BBYC clubhouse. Parties and their witnesses should report there at the scheduled hearing time.
- 15.5 Within the protest time, the race committee will post on the ONB the bow numbers or sail numbers of boats disqualified or penalized in accordance with rule A5.1.
- 15.6 After a hearing, penalties for violation of rules other than those in Part 2 or RRS 31 that do not specify a penalty shall be at the discretion of the jury and may be less than disqualification.
- 15.7 Scoring inquiries should be submitted on the event website on Yacht Scoring.

16 SAFETY REGULATIONS

- 16.1 In the event of an emergency on the water, boats will immediately notify the race committee by hail or VHF channel 72 in order to activate the emergency medical plan.
- 16.2 A boat that withdraws from the racing area for any reason will inform the race committee before departing by hail, VHF or if impracticable by notifying the race committee cell phone upon reaching shore.

17 HAUL OUT RESTRICTIONS

- 17.1 Boats shall be afloat no later than 09:00 on the first scheduled day of racing of each event, and shall not be hauled out until their final race, except with the written permission of the principal race officer or jury.

18 FURTHER INFORMATION

- 18.1 Official notice board website at Yacht Scoring: www.yachtscoring.com
- 18.2 For inquiries about the 2022 Etchells Biscayne Bay Series:
Regatta Chairman: Jeff Nehms – racing@etchellsfleet20.org
Regatta Committee Chairman: Bruce Harper – wbruceharpjr@hotmail.com
Race Officer: David Brennan – david@redsailtd.com
BBYC Office: 305-858-6303 or gm@biscaynebayyachtclub.com

APPENDIX – US SAILING PRESCRIPTIONS

The following US Sailing Prescriptions shall apply

RRS 60.3.

US Sailing Prescribes that: (b) request redress for a boat or call a hearing to consider redress;

RRS 67.

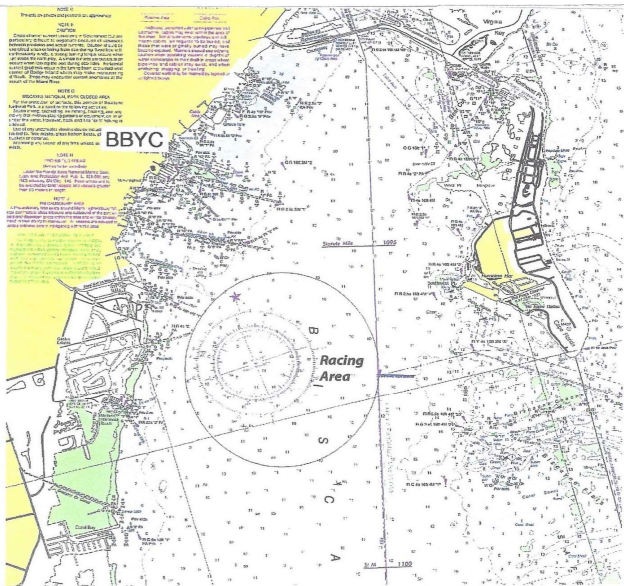
US Sailing prescribes that:

- (a) A boat that retires from a race or accepts a penalty does not, by that action alone, admit liability for damages.
- (b) A PC shall find facts and make decisions only in compliance with the rules. No PC or US Sailing appeal authority shall adjudicate any claim for damages. Such a claim is subject to the jurisdiction of the courts.
- (c) A basic purpose of the rules is to prevent contact between boats. By participating in an event governed by the rules, a boat agrees that responsibility for damages arising from any breach of the rules shall be based on fault as determined by application of the rules, and that she shall not be governed by the legal doctrine of 'assumption of risk' for monetary damages resulting from contact with other boats.

RRS 76.1.

US Sailing prescribes that an OA or RC shall not reject or cancel the entry of a boat or exclude a competitor eligible under the notice of race and sailing instructions for an arbitrary or capricious reason or for reason of race, color, religion, national origin, gender, sexual orientation, or age.

APPENDIX – RACING AREA



APPENDIX - COURSES

SI APPENDIX – COURSES DIAGRAM

EXAMPLE : COURSE BOARD DISPLAYED ON R/C SIGNAL	VESSEL	4
Course #4 - Windward, Leeward, Windward, Leeward (finish)		120°
1a (vertical) + 1b (90° offset) at the weather mark, and leeward Gate.		1.2 nm
Weather mark (s) approx. 120° magnetic at 1.2 nm from the start .		

COURSE 4:

'1b' '1a'

Wind ↓

- Leg 1 – Windward (1a + 1b to port)
- Leg 2 – Leeward (gate)
- Leg 3 – Windward (1a + 1b to port)
- Leg 4 – Leeward (Finish)

'2s' '2p'

