



# INTERNATIONAL ETHELLES CLASS FLEET 20 BISCAYNE BAY 2023 WORLD CHAMPIONSHIP LOCAL QUALIFYING EVENT NOTICE OF RACE (NOR)

**October 15<sup>th</sup>, 2022**

Etchells Fleet 20 Biscayne Bay is the organizing authority (OA).

The Biscayne Bay Yacht Club (BBYC), Coral Reef Yacht Club (CRYC) and Shake-A-Leg Miami (SALM) are the host clubs. The BBYC Regatta Committee is designated as the race committee (RC).

## **1 RULES**

- 1.1 The event is governed by the rules as defined in *The Racing Rules of Sailing* (RRS).
- 1.2 RRS 44.1 and RRS 44.2 are changed. See NOR 14 PENALTY SYSTEM.
- 1.3 [DP] International Etchells Association Class Rules.
- 1.4 The US Sailing prescriptions that apply are detailed in *APPENDIX–US SAILING PRESCRIPTIONS* of this NOTICE OF RACE (NOR).
- 1.5 For the purposes of Class Rule C.10.2.(b), not more than 1 mainsail, 2 headsails and 2 spinnakers shall be used during the event.

## **2 SAILING INSTRUCTIONS**

- 2.1 The sailing instructions (SI) will be available on the Yacht Scoring website on 14 April, 2022 at [www.yachtscoring.com](http://www.yachtscoring.com).

## **3 COMMUNICATIONS**

- 3.1 The online official notice board (ONB) is located at [www.yachtscoring.com](http://www.yachtscoring.com). The race office will be at BBYC.
- 3.2 [DP] All boats shall carry a VHF radio capable of communicating on US VHF Marine Channels.
- 3.3 On the water, the RC will make courtesy broadcasts to competitors on VHF radio. The channel will be stated in the SIs.
- 3.4 [DP] The use of mobile/cell phones, or any device capable of sending and/or receiving external electronic communication and/or connecting to the internet is prohibited after the first Warning Signal on each race day until the boat has completed racing that day, except in an emergency threatening the safety of any member of the crew or the flotation of the boat.

## **4 ELIGIBILITY AND ENTRY**

- 4.1 The event is open to all boats of the Etchells Fleet 20 Biscayne Bay Class, with a valid measurement certificate.
- 4.4 Boats may enter the event by registering online at [www.yachtscoring.com](http://www.yachtscoring.com).
- 4.5 To be considered an entry in the event, a boat shall complete all registration requirements.

## **5 FEES**

- 5.1 There will be NO entry fee.

## 6 CREW LIMITATIONS

6.1 The Skipper shall be an Owner Member of the International Etchells Class Association.

### 6.2 The Skipper:

- a. Shall be an Owner Member of Fleet 20 Biscayne Bay and be so registered with the Etchells Class National Association prior to the first race of their Fleet's qualification races;
- b. May, if belonging to more than one Fleet, compete for qualification in one Fleet only, which shall be the Fleet sailing the earliest qualifying series, unless such Skipper advises the Fleet Captain of such Fleet in writing before the first race in that qualifying series that they will not be competing for qualification in that series.

## 7 ADVERTISING

7.1 All boats shall comply with Class Rule C.4.

## 8 QUALIFYING SERIES AND FINAL SERIES

8.1 The event will be a single series championship.

## 9 SCHEDULE

9.1 The times shown in the table below are US Eastern Daylight Time (EDT).

9.2

Date	Time	First Warning Signal	Event
Fri. 14 October 2022	0900-1600		MarkSetBot and TracTrac training
Sat. 15 October 2022	0900-0915	1055	Competitor's Briefing
	1700-1800		Fleet 20 Qualifying Race 1 (5 races scheduled) Daily Prizegiving at CRYC

## 10 EQUIPMENT INSPECTION

10.1 Each boat shall produce a valid measurement certificate.

## 11 CLOTHING

11.1 The total weight per person of worn or carried clothing and equipment, including footwear and other clothing worn below the knee, shall not exceed 10 kg. The total combined weight carried by the crew shall not exceed 30Kg. This changes RRS 50.1 (b).

## 12 VENUES

12.1 NOR APPENDIX – SHORE VENUES shows the plan of the event shore venues.

12.2 NOR APPENDIX – RACE AREA shows the location of the racing area.

## 13 COURSES

13.1 The courses to be sailed will be windward / leeward configuration as defined in the sailing instructions.

## 14 PENALTY SYSTEM

14.1 The first two sentences of RRS 44.1 are changed to: "A boat may take a One-Turn Penalty when she may have broken one or more rules of Part 2 or RRS 31 in an incident while racing. However, when she may have broken one or more rules of Part 2 while in the zone around a mark other than a starting mark, her penalty shall be a Two-Turns Penalty".

14.2 In RRS 44.2 insert after the first sentence: "However, if Mark 1a (spreader mark) is set, a boat may take a penalty for an incident in the zone around Mark 1 or on the leg between Mark 1 and Mark 1a, as soon as possible after leaving the zone around Mark 1a".

## 15 SCORING

- 15.1 Five (5) races are scheduled.
- 15.2 Five (5) races are required to be completed to constitute a series.

## 16 SUPPORT PERSON VESSELS

- 16.1 [DP] *Support persons* and their vessels shall stay outside areas where boats are racing from 20 minutes before the first Warning Signal of the day until racing has been concluded for the day. Between races, *support persons* shall not approach, communicate with or transfer provisions or equipment to or from their supported boats unless in a medical or emergency requirement threatening the health of the crew or the flotation of the boat.
- 16.3 [DP] All *support persons* shall carry a marine VHF radio while on the water, monitor the race committee and agree to assist the race committee if directed to do so.

## 17 RISK STATEMENT

- 17.1 Before participating in this event, every owner, competitor and support person shall sign a Waiver of Liability on Yacht Scoring.
- 17.2 Competitors participate in this event entirely at their own risk. See rule 3, Decision to Race. The race organizers (organizing authority, race committee, protest committee, host club, sponsors, or any other organization or official) will not accept any liability for material damage or personal injury, or death sustained in conjunction with or prior to, during or after the events.
- 17.3 RRS 3 states: 'The responsibility for a boat's decision to participate in a race or to continue to race is hers alone.' By participating in this event each competitor agrees and acknowledges that sailing is a potentially dangerous activity with inherent risks. These risks include strong winds and rough seas, sudden changes in weather, failure of equipment, boat handling errors, poor seamanship by other boats, loss of balance on an unstable platform and fatigue resulting in increased risk of injury. **Inherent in the sport of sailing is the risk of permanent, catastrophic injury or death by drowning, trauma, hypothermia or other causes.**

## 18 INSURANCE

- 18.1 Each participating boat shall be insured with valid third-party liability insurance with a minimum cover of \$300,000 USD per incident or the equivalent.

## 19 PRIZES

- 19.1 No prizes will be given.

## 20 FURTHER INFORMATION

- 20.1 The Fleet 20 website [www.etchellsfleet20.org](http://www.etchellsfleet20.org) will provide additional information.
- 20.2 Official Notice Board website at Yacht Scoring: [www.yachtscoring.com](http://www.yachtscoring.com)
- 20.3 For inquiries about the 2023 Etchells Biscayne Bay Series:
  - Regatta Co-Chairman: Jeff Nehms – [racing@etchellsfleet20.org](mailto:racing@etchellsfleet20.org)
  - Regatta Co-Chairman: Chris Lanza – [CFL@lanzalaw.com](mailto:CFL@lanzalaw.com)
  - Regatta Committee Chairman: Bruce Harper – [wbruceharpjr@hotmail.com](mailto:wbruceharpjr@hotmail.com)
  - Principal Race Officer: Dave Brennan – [david@redsailtld.com](mailto:david@redsailtld.com)

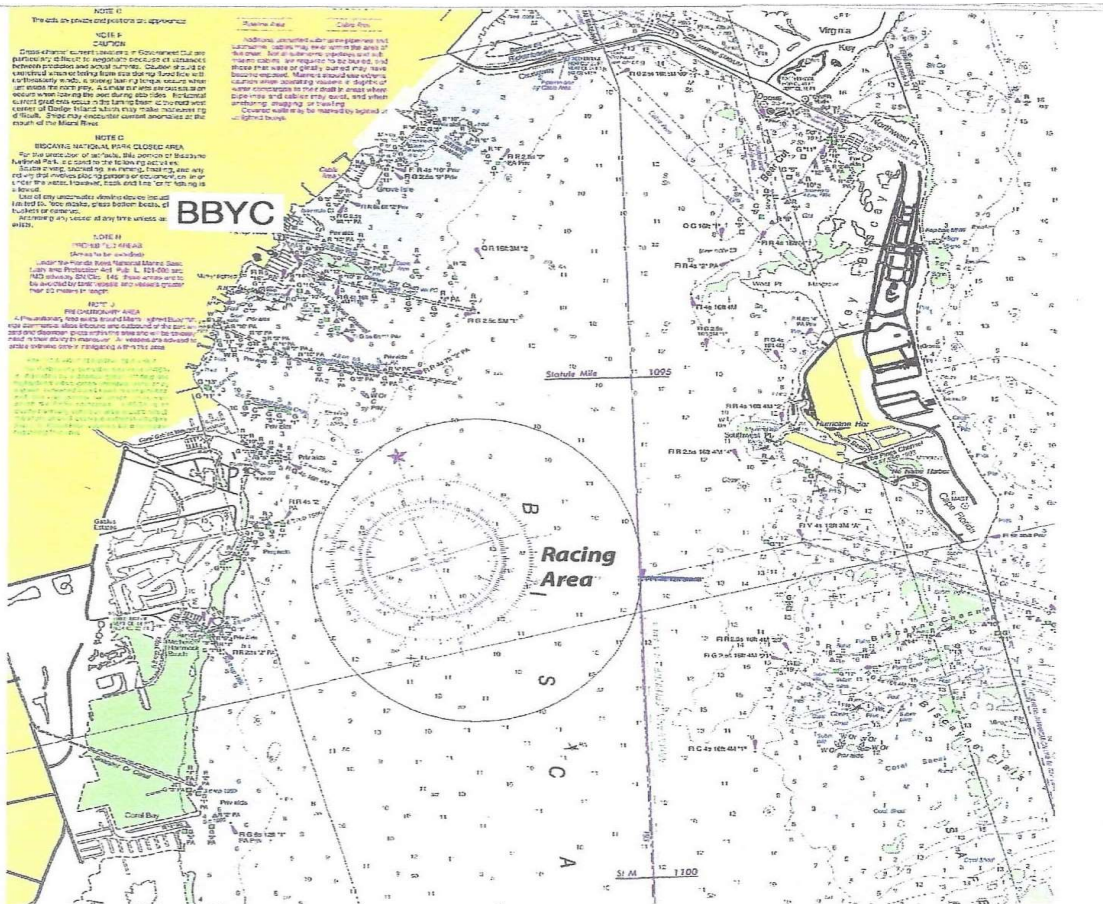
The notation [DP] in a rule in the NOR means that the penalty for a breach of that rule may, at the discretion of the international jury, be less than disqualification. The notation [NP] in a rule means that a boat may not protest another boat for breaking this rule.



**APPENDIX – SHORE VENUES**



**APPENDIX – RACE AREA**



## **APPENDIX – US SAILING PRESCRIPTIONS**

### **US SAILING PRESCRIPTIONS**

The following US Sailing Prescriptions shall apply:

RRS **60.3.**: US Sailing prescribes that: (b) request redress for a boat or call a hearing to consider redress;

RRS **61.4.**: US Sailing prescribes that no fees shall be charged for protests or request for redress.

### **RRS 67.**

US Sailing prescribes that:

- (a) A boat that retires from a race or accepts a penalty does not, by that action alone, admit liability for damages.
- (b) A PC shall find facts and make decisions only in compliance with the rules. No PC or US Sailing appeal authority shall adjudicate any claim for damages. Such a claim is subject to the jurisdiction of the courts.
- (c) A basic purpose of the rules is to prevent contact between boats. By participating in an event governed by the rules, a boat agrees that responsibility for damages arising from any breach of the rules shall be based on fault as determined by application of the rules, and that she shall not be governed by the legal doctrine of 'assumption of risk' for monetary damages resulting from contact with other boats.

### **RRS 76.1.**

US Sailing prescribes that an OA or RC shall not reject or cancel the entry of a boat or exclude a competitor eligible under the notice of race and sailing instructions for an arbitrary or capricious reason or for reason of race, color, religion, national origin, gender, sexual orientation, or age.