

# SAILING INSTRUCTIONS

HELLY HANSEN SAILING WORLD REGATTA SERIES  
ANNAPOLIS YACHT CLUB | ANNAPOLIS, MD MAY 5-7, 2023

SAILING WORLD AND THE ANNAPOLIS YACHT CLUB ARE CO-ORGANIZING AUTHORITIES (OA) FOR THIS REGATTA. THE ANNAPOLIS YACHT CLUB (AYC) IS THE HOST CLUB AND WILL PROVIDE RACE MANAGEMENT ASSISTED BY EASTPORT YACHT CLUB AND THE SEVERN SAILING ASSOCIATION.

THE NOTATION '[DP]' IN A RULE IN THIS NOTICE OF RACE MEANS THAT THE PENALTY FOR A BREACH OF THAT RULE MAY, AT THE DISCRETION OF THE PROTEST COMMITTEE, BE LESS THAN DISQUALIFICATION. THE NOTATION '[NP]' IN THE RULE IN THESE SAILING INSTRUCTIONS MEANS THAT THIS RULE IS NOT GROUNDS FOR A PROTEST OR REQUEST FOR REDRESS BY A BOAT. THIS CHANGES RRS 60.1(A).

## 1. RULES

**1.1** The regatta will be governed by the rules as defined in The Racing Rules of Sailing (RRS).

**1.2** For the J/70 Class: Class Rules Part III Sections I.3 (Support Boat) and I.4 (Corinthian Division) will apply. [DP]

**1.3** J/105 Class Rules are modified by Article IX of the local J-105 Fleet-3 Article/Rules. This event is designated Level 1A. J/105 Fleet-3 Articles/Rules can be found at <https://www.j105fleet3.org/rules>.

**1.4** The US Sailing Prescriptions to RRS 63.1 and 63.2 shall not apply.

**1.5** Boats shall not fly drones while racing or in the racing area. [DP]

## 2. SAILING INSTRUCTIONS

**2.1** Sailing Instructions will be posted on the Official Notice Board prior to the event.

**2.2** Amendments to the Sailing Instructions will be posted on the Official Notice Board located on the race website. It is the responsibility of each competitor to check the Official Notice Board for any amendments or notices.

**2.3** Separate Sailing Instructions (SIs) will be available for the Distance Race.

**2.4** Class breaks will be published as an Addendum to the SIs.

## 3. COMMUNICATION

**3.1** The Official Notice Board is located online at [https://yachtscoring.com/notice\\_board\\_summary.cfm?eid=15506](https://yachtscoring.com/notice_board_summary.cfm?eid=15506)

**3.2** All boats shall carry a VHF radio capable of communicating on US

channels. This may change a class rule. [DP]

**3.3** On the water, the race committee will make courtesy broadcasts to competitors on VHF radio. The channel for each course will be stated in SI Addendum 1.

**3.4** While racing, except in an emergency, a boat shall not make voice or data transmissions and shall not receive voice or data communication that is not available to all boats. [DP]

## 4. ADVERTISING

**4.1** Boats are urged to refrain from displaying advertisements for businesses or products competing with those of the primary and support sponsors of the event.

**4.2** Boats may be required to display advertising chosen and supplied by the OA, e.g., bow stickers, bow numbers, boom stickers, and/or flags.

**4.3** At the discretion of the OA, bow numbers may also be required for some classes.

## 5. SIGNALS MADE ASHORE

No official signals will be displayed ashore. Notifications to competitors will be posted on the Official Notice Board.

## 6. SCHEDULE OF RACES

**6.1** As many races will be sailed as are viable on each scheduled day of racing. A maximum of ten races may be sailed for each class.

**6.2** The scheduled time of the warning signal for the first start of the first race each day is 1100.

**6.3** On the last scheduled day of the regatta no warning signal will be made after 1500.

## 7. DIVISIONS, CLASS FLAGS, INITIAL STARTING ORDER, AND VHF CHANNELS

**7.1** Division, class flags, initial starting order, and VHF channels will be defined in SI Addendum 1 which will be posted on the Official Notice Board.

**7.2** Divisions will be identified by number and color to be described in SI Addendum 1.

**7.3** The signal vessels for each division will fly the colored flag for their division each morning on the way to the starting area and until their first scheduled warning signal.

## 8. RACING AREA

**8.1** The racing area will be the Chesapeake Bay. The general racing area of each division will be included in SI Addendum 1.

**8.2** Approximately 60 minutes prior to the first scheduled warning signal, the race committee will announce the location of the anchored race committee signal vessel on VHF radio.

## 9. COURSES

**9.1** The courses are as shown in the Course Diagrams and Descriptions.

**9.2** Prior to the warning signal, the race committee signal vessel will announce on VHF radio the course to be sailed, the approximate distance between the leeward and windward marks, and the approximate compass bearing of the first leg of the course.

## 10. MARKS

**10.1** Marks will be defined in SI Addendum 1.

**10.2** When the first mark of the course is to be a change mark, the race committee signal vessel will display flag "C" prior to the warning signal, accompanied by a series of repetitive sound signals and announce on VHF radio that the first mark will be a change mark.

## 11. THE START

**11.1** Races will be started using RRS 26.

**11.2** Prior to the warning signal, the race committee will announce the next class to start on VHF radio.

**11.3** The starting line will be between the staff or halyard displaying an orange flag on the race committee signal vessel at the starboard end, and either the course side of the starting mark or the staff or halyard displaying an orange flag on the race committee vessel at the port end.

**11.4** Boats whose warning signal has

# SAILING INSTRUCTIONS

HELLY HANSEN SAILING WORLD REGATTA SERIES  
ANNAPOLIS YACHT CLUB | ANNAPOLIS, MD MAY 5-7, 2023

not been made shall avoid the starting area during the starting sequence for other races. [DP]

**11.5** A boat that does not start within 10 minutes after her starting signal will be scored Did Not Start without a hearing. This changes RRS A4 and A5.

**11.6** A race committee starting or finishing vessel may set a stand-off buoy. When present, this stand-off buoy, the line attaching it to the race committee vessel, and the race committee vessel are all part of the starting or finishing mark.

## 12. RECALLS

The race committee may announce on VHF radio boats identified as OCS. A boat may not base a request for redress on the failure to hear or receive the announcements, the timeliness of announcement or the order in which boats are announced. This changes RRS 62.1(a) and RRS/US U5.

## 13. CHANGE OF POSITION OF THE NEXT MARK

**13.1** The race committee may, without signal, move a mark to change the direction up to 10 degrees or the length up to 10% of the previous length, or adjust the angle or width of the leeward gate, provided that no boat is sailing to the mark.

**13.2** The race committee may, when signaled in accordance with RRS 33, lay a new mark as described in SI Addendum 1 (or move the finishing line) and remove the original mark as soon as practicable. When in a subsequent change a new mark is replaced, it will be replaced by an original mark.

**13.3** When flag Q is displayed with flag C, the change will apply only to boats beginning their final leg to the finish. This changes RRS 33 and Race Signals.

## 14. THE FINISH

The finishing line will be between the staff displaying a blue flag on the race committee finishing vessel and either

the course side of the nearby finishing mark or the staff displaying a blue flag on a race committee vessel on the other end.

## 15. PENALTY SYSTEM

**15.1** US Sailing Prescription Appendix V – ALTERNATIVE PENALTIES will apply.

**15.2** Penalties after racing: RRS Appendix T – ARBITRATION will apply.

## 16. TIME LIMIT

**16.1** If no boat sails the course and finishes within 2 hours the race will be abandoned.

**16.2** Boats failing to finish 30 minutes after the first boat in each class sails the course and finishes will be scored TLE (Time Limit Expired, see Scoring) and should proceed to the starting area if another race is scheduled. The race committee boat at the finishing line will lower the blue flag with a long sound signal when the 30-minute period has expired for all classes. This changes RRS 35, A4 and A5.

## 17. HEARING REQUESTS

**17.1** The protest time limit is 60 minutes after the race committee signal boat docks. The time will be posted on the Official Notice Board.

**17.2** Hearing request forms, scoring inquiry forms, and penalty acceptance forms can be found online at or on the event website under General Race Forms. They shall be delivered to the race office by email to <https://www.annapolisyc.com/racing/raceoffice>.

**17.3** Hearing requests shall be delivered to the race office by the protest time limit.

**17.4** When the race committee receives a scoring inquiry form, it will review its records and respond as soon as practicable. The time limit for requesting redress based on a scoring inquiry is 30 minutes after posting of the results of the scoring inquiry. Except on the last day of the event, if this time limit is after 2000 hours, it is extended to 0830 the following morning. This changes rule 62.2.

**17.5** The protest committee intends to conduct hearings in person at the AYC Sailing Center. The protest committee will post a notice on the event's Protest Committee console on Yachtscoring to inform competitors of the schedule and location of hearings in which they are parties or named as witnesses.

**17.6** The race committee will post a list of race committee scoring actions no later than the protest time limit.

## 18. SCORING

**18.1** One completed race shall constitute a series.

**18.2** A boat's series score will be the total of her race scores without discard.

**18.3** Boats to be scored TLE and not thereafter retiring, being penalized, or given redress will be scored points equal to the number of boats finishing within the time limit plus two points by the race committee without a hearing. This changes RRS A4.1, A4.2 and A5.

## 19. SAFETY REGULATIONS

**19.1** A boat that retires from a race shall notify the race committee as soon as practicable. [DP]

**19.2** RRS 40 (Personal Buoyancy) is replaced by: "It shall be the individual responsibility of each competitor to wear adequate personal buoyancy when conditions warrant."

**19.3** A boat shall not exercise right of way, cross in proximity to, or interfere with reasonable transit of the race area by commercial ships, tugs, or barges. Boats must take evasive action well in advance of a potentially dangerous situation. The US Coast Guard, ship captains, and bay pilots have been encouraged to report any incident they observe. [NP]

**19.4** The race committee or protest committee may protest a boat for breaking SI 19.3 based on information received from any source. The protest time limit does not apply. This changes RRS 60.2, 60.3, 61.3, and 63.6.

# SAILING INSTRUCTIONS

HELLY HANSEN SAILING WORLD REGATTA SERIES  
ANNAPOLIS YACHT CLUB | ANNAPOLIS, MD MAY 5-7, 2023

## 20. RISK STATEMENT

**20.1** Competitors participate in the regatta entirely at their own risk. RRS 3 states: 'The responsibility for a boat's decision to participate in a race or to continue racing is hers alone.' By participating in this event each competitor agrees and acknowledges that sailing is a potentially dangerous activity with inherent risks. The OA will not accept any liability for material damage or personal injury or death sustained in conjunction with or prior to, during, or after the regatta.

**20.2** The Skipper/Owner of each boat participating in the regatta shall be responsible for the behavior of each member of the crew of his/her boat both on the water and while ashore. The destruction of property, the breach of reasonable standards of good sportsmanship by any crew member, or any other person associated with the boat, or the failure of any of those persons to comply with the state and local laws, guidelines and recommendations as well as the host club's restrictions or with any reasonable request of the Organizing Authorities, Race Officers,

Regatta Committee members, or their representatives, may result in the disqualification of the boat, and its exclusion from the regatta.

**20.3** It is the skipper's obligation to ensure that each crew member's waiver is reflected on the waiver list prior to closing of on-site registration and check-in.

## 21. INSURANCE

Each participating boat shall be insured with valid third-party liability insurance with a minimum cover of \$500,000 per incident or the equivalent. Competitors shall be prepared to supply proof of insurance upon request by the OA.

## 22. PRIZES

**22.1** Prizes will be awarded, after racing on Sunday, to the top-three finishers of each qualifying class.

**22.2** Boats in classes participating in three or more events of the Series will qualify for Sailing World Regatta Series Champion award, which will be based on cumulative race scores from three events

**22.3** Additional prizes may be awarded

to the top Junior Team (under 21 years of age), and top Mixed Plus Team (50% + female) to any one-design class with a minimum of 12 boats registered.

## 23. PHOTOGRAPHERS AND TV RIGHTS

Competitors give absolute right and permission to the OA and its sponsors for any photographs or video footage taken of themselves or their competing boat to be published in any media whatsoever; for either editorial or advertising purposes, or to be used in press information.

## 24. ENVIRONMENTAL

The Regatta Series strives to support sustainable sailing and works with Sailors for theSea - Silver Level certified Clean Regatta. The Regatta Series partners with Sea Bags for sail collection, and Line Collection to reuse and upcycle sailing equipment. Please bring your reusable water bottles, consider car-pooling and using bike share programs, and provision your boat with limited no single-use plastics. Visit [www.sailorsforthesea.org](http://www.sailorsforthesea.org) to learn more.

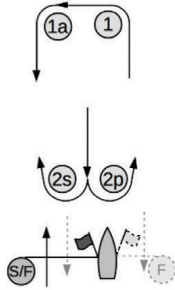


# COURSE DIAGRAM

HELLY HANSEN SAILING WORLD REGATTA SERIES  
ANNAPOLIS YACHT CLUB | ANNAPOLIS, MD MAY 5-7, 2023

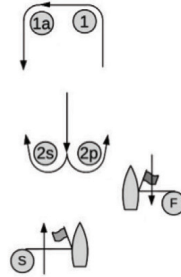
All marks except 2S are to be rounded to port. If there is only one mark at a leeward gate, that mark will be "2p" and shall be rounded to port. The color and shape of the marks will be as described in SI Addendum 1.

**LA**



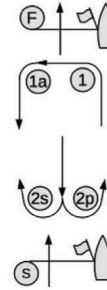
LA2: Start-1-1a-s/2p-1-1a-Finish  
LA3: Start-1-1a-s/2p-1-1a-2s/2p-1-1a-Finish

**LAF**



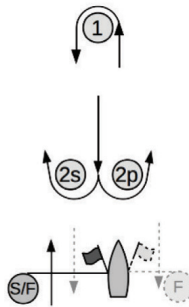
LA2F: Start-1-1a-2s/2p-1-1a-Finish  
LA3F: Start-1-1a-2s/2p-1-1a-2s/2p-1-1a-Finish

**WA**



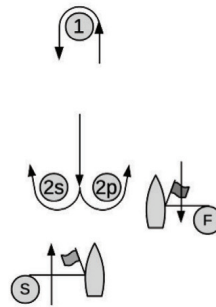
WA2: Start-1-1a-2s/2p-Finish  
WA3: Start-1-1a-2s/2p-1-1a-2s/2p-Finish

**L**



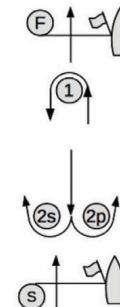
L2: Start-1-2s/2p-1-Finish  
L3: Start-1-2s/2p-1-2s/2p-1-Finish

**LF**



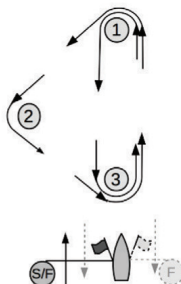
L2F: Start-1-2s/2p-1-Finish  
L3F: Start-1-2s/2p-1-2s/2p-1-Finish

**W**



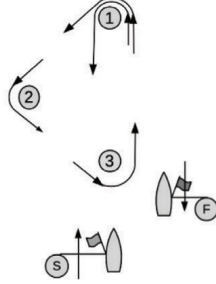
W2: Start-1-2s/2p-Finish  
W3: Start-1-2s/2p-1-2s/2p-Finish

**TL**



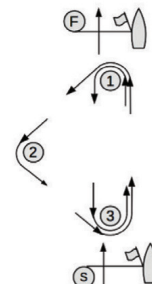
TL2: Start-1-2-3-1-Finish  
TL3: Start-1-2-3-1-3-1-Finish

**TLF**



TL2F: Start-1-2-3-1-Finish  
TL3F: Start-1-2-3-1-3-1-Finish

**TW**



TW2: Start-1-2-3-Finish  
TW3: Start-1-2-3-1-3-Finish