



## 2023 International Melges 20 World Championship

Coconut Grove Sailing Club • Miami, Florida (BISCAYNE BAY) • USA

November 28 – December 3, 2023

### 2nd AMENDED SAILING INSTRUCTIONS

Posted November 26, 2023

Posted November 27, 2023

Posted November 29, 2023

#### 1. RULES

- 1.1. The regatta will be governed by the *rules* as defined in *Racing Rules of Sailing for 2021-2024* (RRS).
- 1.2. The International Melges 20 Class Rules (IAM20CR), including Part 3, Section I (EVENT RULES), will apply.
- 1.3. The US Sailing Prescriptions that will apply are stated in full in Addendum A.
- 1.4. The Equipment Rules of Sailing (ERS) will apply.  
[https://www.sailing.org/tools/documents/EquipmentRulesofSailing20212024-\[26661\].pdf](https://www.sailing.org/tools/documents/EquipmentRulesofSailing20212024-[26661].pdf)
- 1.5. Competitor advertising shall conform to the current World Sailing Regulation 20 and the Class Rules. Boats will be required to display identification numbers and may be required to display sponsor advertising for the duration of the event in accordance with World Sailing Regulation 20.4.
- 1.6. As per Class Rule C1.1(c), crews are allowed to pump the gennaker sheet, without restriction, to promote planing. *This modifies RRS 42.3(c).*

#### 2. RADIO COMMUNICATION and WHATSAPP COMMUNICATION

- 2.1. All competing boats shall carry a hand-held VHF radio capable of transmitting and receiving VHF channels (US) for safety purposes and Race Committee (RC) communication.
- 2.2. On the water, the RC will communicate on **VHF channel 73**.

- 2.3. RC broadcasts concerning its intentions, the course to be sailed, starting times, course changes, OCS hails, etc. are a courtesy only. Failure of the RC to make a broadcast, the timing of a broadcast, or the failure of the boat to hear a broadcast shall not be grounds for redress under RRS 62.1(a).
- 2.4. Except from the specified RC VHF channel 73, no competitor shall make or receive radio communications commencing from the first warning signal of the day until the conclusion of the day's racing, except in the case of emergency. This restriction also applies to cell phone communications, except that cell phones may be used between races to check the regatta website.
- 2.5. On shore, the RC will communicate with competitors via the 2023 Melges 20 Worlds WhatsApp Group.

### **3. NOTICES TO COMPETITORS**

- 3.1. Notices and results will be posted on the two official notice boards located on the Official Notice Board located at [https://yachtscoring.com/notice\\_board\\_summary.cfm](https://yachtscoring.com/notice_board_summary.cfm).
- 3.2. All questions for the RC shall be made in writing and will be answered, in writing, and posted to the official notice boards.

### **4. CHANGES TO THE SAILING INSTRUCTIONS**

- 4.1. Any changes will be posted by 0930 on the day they will take effect, except that any changes in the Schedule of Races will be posted no later than 2000 on the day before they will take effect (SI 16.2).
- 4.2. Oral changes to the SIs may be given on the water. The RC signal vessel shall display Code Flag "L" with one sound and announce the change on VHF channel 73 in accordance with RRS 90.2(c). Competitors may also approach the RC signal vessel to receive the change while the Code Flag "L" is displayed. All oral changes will be posted on the Official Notice board as soon as possible on the day they were made.
- 4.3. All boat owners and drivers must comply with requirements of the Class Rules IM20CR Part II.C.2.

### **5. SIGNALS MADE ASHORE**

- 5.1. Signals made ashore will be displayed from the main flagpole at CGSC. Signals made ashore will also be communicated via the 2023 Melges 20 Worlds WhatsApp Group.
- 5.2. Code Flag "L", when displayed ashore, signifies that a change in SIs or other notice to competitors has been posted on the Official Notice board.
- 5.3. Code Flag "AP" when displayed ashore means that the start has been postponed. The

warning signal will be made not less than 60 minutes after the lowering of the onshore “AP” signal. *This changes Race Signals AP.*

## **6. SCHEDULE OF EVENTS**

### **6.1. Tuesday, November 28th 2023 - Measurement and Registration**

0800-1800: Measurement Checks at SALM

1700-1800: Registration/Check-in via WhatsApp

### **Wednesday, November 29th 2023 - PRE-WORLD CHAMPIONSHIP**

0800-1800: Measurement Checks at SALM

1100: Initial Warning Signal for Pre-World Championship (three races scheduled)

1800: Registration/Check-in via WhatsApp

1830: Opening Ceremonies and Welcome Dinner at SALM

### **Thursday, November 30th 2023 - WORLD CHAMPIONSHIP RACE DAY ONE**

0900: Competitors Meeting at SALM

1100: Initial Warning Signal

After Racing: Social at Monty’s

### **Friday, December 1st 2023 - WORLD CHAMPIONSHIP RACE DAY TWO**

0900: Competitors Meeting via WhatsApp

1100: Initial Warning Signal

After Racing: Happy Hour Peter McClennan’s

### **Saturday, December 2nd 2023 - WORLD CHAMPIONSHIP RACE DAY THREE**

0900: Competitors Meeting via WhatsApp

1100: Initial Warning Signal

1700: Class Dinner at Atchanya

### **Sunday, December 3rd 2023 - WORLD CHAMPIONSHIP RACE DAY FOUR**

0900: Competitors Meeting via WhatsApp

1100: Initial Warning Signal

1400: No initial Warning Signal after this time

After Racing Final Awards Ceremony at Shake-A-Leg

6.2. Up to ten (10) races are scheduled. The RC may run fewer races at its discretion and may make up a race on any day, if needed. A maximum of four (4) races may be sailed on any day.

6.3. The RC will signal its intent to start another race by displaying the Code Flag “R” at the finish of a race. Code Flag “R” will be lowered with one sound, one (1) minute before the next warning signal is made.

## **7. RACING AREAS**

7.1. All racing will be on Biscayne Bay in an area approximately 1 to 3 miles SSE of Brennan Channel Marker “1” (FIG. 5 sec. 8ft).

## 8. COURSES

- 8.1. Course Designations are shown in **Addendum B**.
- 8.2. Prior to the warning signal for each race, the RC will display the course designation, the bearing and distance to the first mark and will broadcast this information on VHF channel 73.

## 9. MARKS

- 9.1. ~~Mark 1 and marks, 2s/2ps, the leeward gate, will be orange inflatable mark bots.~~ All marks of the course will be orange markset bots or orange tetrahedrons.
- 9.2. ~~Mark 1a, the offset mark, will be an orange inflatable mark bot.~~
- 9.3. If mark 1 has been moved, mark 1a will be reset.
- 9.4. Marks 2s/2p will be located to windward of the starting line and may be set after the starting signal.
- 9.5. If one of the leeward gate marks ~~bots~~ (2s/2p) is missing, boats shall round the one existing leeward mark ~~bot~~ to port.

## 10. THE START

- 10.1. Races will be started in accordance with RRS 26.
- 10.2. The class flag will be the International Melges 20 Insignia on a white flag. Numeral Pennant #1 may be substituted for the Melges 20 class flag.
- 10.3. The starting line will be between staffs displaying orange flags on the starboard end of the RC signal vessel and the port end of the RC Pin vessel. In the event that the pin vessel is not on station, it will be replaced by the course side of an orange inflatable mark.
- 10.4. An inflatable buoy may be tethered to the stern of the race committee vessel(s) and will function as an extension of that race committee vessel.
- 10.5. A boat starting later than four (4) minutes after her starting signal will be scored Did Not Start (DNS) without a hearing. *This changes RRS A4.1 and A5.*

## 11. RECALLS

- 11.1. The RC will attempt to hail the sail number or bow number of boats that are identified as OCS. Failure of a boat to see or hear her recall notification, the timing and order of such hails, or the length of time it takes to make a notification will not be grounds for redress requests. *This is in addition to, and changes RRS 60.1(b) and 62.1.*

## 12. CHANGING THE NEXT LEG OF THE COURSE

- 12.1. The RC may make minor adjustments (up to 5 degrees and .1NM in length) of the course during a race without signaling a course change. *This changes RRS 33.*
- 12.2. To change the next leg of the course, the RC move the original mark bot to its new position.

### **13. FINISH**

- 13.1. The finish line for leeward finishes (Course 4) will be on the opposite side of the RC vessel from the starting line. The finish line will be between staffs displaying an orange flag on race committee vessels or between a staff displaying an orange flag on a RC vessel and the course side of an orange mark bot. This changes Race Signals.
- 13.2. The finish line for windward finishes (Course 5) will be between staffs displaying orange flags on RC vessels or between a staff displaying an orange flag on a RC vessel and the course side of an orange inflatable mark bot to port of the RC vessel. *This changes Race Signals.*

### **14. PENALTY SYSTEM**

- 14.1. IAM20CR 1.3.1(a) will apply: *RRS 44.1(a) and 44.2 are changed* so the penalty shall be a One-turn penalty including one tack and one gybe. However, when she may have broken one or more rules of Part 2 while in the zone around a mark other than a starting mark, her penalty shall be a Two-Turns penalty.
- 14.2. Penalties within the zone of the windward mark or on the offset leg may be delayed and taken as soon as possible on the downwind leg. *This changes RRS 44.2.*
- 14.3. The Jury may impose suitable penalties, other than disqualification, for violations of the Class Rules, or other non-Part 2 rules. This changes RRS 64.1.

### **15. TIME LIMITS**

- 15.1. If no boat rounds the first mark within 30 minutes of the start, or finishes within 2 hours of the start, the race shall be abandoned.
- 15.2. Boats failing to finish within 20 minutes after the first boat sails the course and finishes will be scored as "TLE" and will be scored two (2) additional points more than the number of boats that finished within that time. *This changes RRS 35 and A4.2.*

### **16. PROTESTS AND REQUESTS FOR REDRESS**

- 16.1. The protest time limit is 90 minutes after the later of either: (1) the last boat in the fleet has finished the last race of the day, or (2) the Race Committee signals no more racing today. The protest time limit will be posted on the Official Notice Board on Yacht Scoring.
- 16.2. Scoring inquiries, should be initiated by filling out the online Scoring Inquiry form at

<https://forms.gle/8NRwHJS4PAcKzRTA7>

- 16.3. Also, questions about the status of scoring inquiries can be emailed to [ScoringInquiry@cgsc.org](mailto:ScoringInquiry@cgsc.org). The race committee will investigate, get back to you, and attempt to resolve the issue. If a boat submits a request for redress based on the outcome of a scoring inquiry, then the redress time limit will have been satisfied if the Scoring Inquiry form was submitted before the redress time limit expired and the request for redress is submitted

as soon as possible after being notified of the Race Committee's response to the scoring inquiry. This changes RRS 62.2.

16.4. Protests and requests for redress should be initiated by filling out the online Protest form at

<https://forms.gle/nf2pk5BAaaepPae36>

16.5. Additionally, if a diagram is required, it should be photographed and emailed to

[Protest@cgsc.org](mailto:Protest@cgsc.org).

16.6. Virtual Protest hearings will be held **in the hangar at SALM, conducted by the Jury** via Zoom.

The Zoom link is called "Coconut Grove Sailing Club Protest Room"

<https://us02web.zoom.us/j/83536709778?pwd=UEo3dnpJQjhmVFVQNIRMVVRaVXVkUT09>

Meeting ID: 835 3670 9778

Passcode: 529947

Find your local number: <https://us02web.zoom.us/u/kHLGqwyF3>

16.7. Notices will be posted on Yachtscoring no later than 15 minutes after the protest time limit to inform competitors of hearings in which they are parties to or named as witnesses. It is each boat's sole responsibility to check the Official Notice Board, [https://yachtscoring.com/notice\\_board\\_summary.cfm?eid=15405](https://yachtscoring.com/notice_board_summary.cfm?eid=15405), to see if she is cited in a protest. Representatives of boats who are parties to hearings and their witnesses shall remain on call until excused by the Protest Committee.

16.8. Notices of protests by the Race Committee, Technical Committee or Protest Committee will be posted on the Official Notice Board (as defined in SI 3.1) to inform boats under RRS 61.1(b). Also, we will make a best effort to inform competitors by WhatsApp. Failure to notify a boat by WhatsApp will not be grounds for redress under RRS 62.1(a).

16.9. If the Race Committee posts the results on the official notice board prior to the protest time limit expiring, requests for redress based on being scored OCS, ZFP, UFD, or BFD shall be made no later than 30 minutes after the protest time limit. This changes RRS 62.2.

16.10. The representative from each boat who attends the hearing shall be the owner or the Category 1 helmsman. Category 2 and 3 sailors are not allowed in the hearing, or to be in contact with the representatives at the hearing per class rules.

16.11. Video and photos taken from any support and/or coach boat shall not be used as evidence at protest hearings. This changes RRS 63.6.

## 17. **SCORING**

In accordance with IM20CR 1.3.1(c) and IMCR 1.3.2(b) & (c) (Scoring), the following *changes to RRS A2 shall apply*:

- 17.1 Three (3) races are required to be completed to constitute a series.
- 17.2. When six (6) or more races have been completed, a boat's series score will be the total of her race scores excluding her worst score.

## 18. **BOW NUMBERS**

- 18.1. Each Melges 20 shall have clearly visible bow numbers provided by the manufacturer and that bow number shall be properly registered when entering the regatta and confirmed during registration/check in. Boats failing to properly display bow numbers may be subject to protest by the RC only. *This changes RRS 60.1(a) and RRS 60.3.*
- 18.2. Each Melges 20 shall have clearly visible "Melges World League" bow stickers. These can be obtained from a Melges Performance Sailboat Representative.

## 19. **LAUNCHING & HAUL OUT REQUIREMENTS**

- 19.1. All boats must be in the water by 1400 on Wednesday, November 29, 2023.
- 19.2. All boats must be docked at SALM from Wednesday, November 29 through Sunday, December 3, 2023.
- 19.3. All boats are to remain in the water for the duration of the regatta except according to the terms, and with the permission of the Principal Race Officer or the Regatta Chairman in the event of a required emergency repair.

## 20. **SUPPORT PERSONS AND SUPPORT BOATS**

- 20.1. IM20CR, **Part III, Section 1 (Event Rules) A.4** (OUTSIDE ASSISTANCE) shall apply.
- 20.2. A boat shall receive no outside assistance from support vessels, **cell phones or radio communication, visual or vocal signaling** transfer of equipment or victuals or otherwise once she has left the dock for the day until she has finished the last race of the day, except in the case of emergency **or motor problems that cause the boat to not make her way to the starting area.**
- 20.3. A boat shall not be towed once she has left the dock for the day until she has finished the last race of the last day, except in the case of emergency or motor problems that cause the boat to not make her way to the starting area. If, in the case of a motor problem, the boat shall make every attempt to fix the problem prior to the next day's racing and shall make the boat available for inspections by the RC and/or Class Representative.
- 20.4. Individual support persons or support vessels shall not approach closer than 300 feet to any boat that is racing, except at mark roundings or the finish line where they shall not approach closer than **100 feet** upwind of the windward mark or downwind of the leeward mark, and extensions of the finish line.

- 20.5. At the warning signal for the start, individual support persons or support vessels shall leave the area being used by the racing boats and may station themselves outside of either the pin or RC signal boat, but no closer to either end than 300 feet.
- 20.6. Each competitor (skipper) shall register any support person, support vessel and/or spectator vessel affiliated with their boat with the OA during check-in and receive a numbered flag (\$80.00 deposit for flag). Only support persons that have been registered with the OA and display a support flag will be allowed in the racing areas permitted in this section.
- 20.7. Support persons and support vessels are required by the RC to monitor VHF Channel 73 and shall abide by all RC instructions. In addition, they provide assistance to any competitor in danger if notified to do so by the RC.
- 20.8. A boat whose registered support person, support vessel, or spectator vessel has violated any of the above stated rules, or has caused undo wake due to excessive speeds near the race court, may be subject to protest by the RC or Jury.
- 20.9. The RC reserves the right to make additional requirements for support persons and support vessels at any time during the event.

## **21. PRIZES**

- 21.1. The top three (3) overall boats will receive prizes.

## **22. SAFETY REQUIREMENTS**

- 22.1. A boat that retires from a race or does not intend to start a scheduled race shall promptly report this to the RC and receive acknowledgement. If this is not possible, she shall promptly report her actions to the regatta desk on shore at CGSC.

## **23. DISCLAIMER OF LIABILITY**

- 23.1. As a condition of entry, each owner, skipper and individual participating crew member shall sign a liability waiver/media release. The fully executed Liability Waiver Form can be found on the regatta website (insert link here) and at registration, and shall be submitted at registration prior to racing.
- 23.2. Sailing is an activity that carries with it an inherent risk of damage and injury. Competitors participate in the regatta entirely at their own risk and are reminded to pay special attention to RRS 3, Decision to Race. The race organizers, including the Organizing Authority, Coconut Grove Sailing Club, International Melges 20 Class Association, Melges Performance Sailboats, Race Committee, International Jury, any sponsors and affiliated companies, and each of their officers, directors, employees, sponsors and agents (collectively as "Releasees"), and volunteers, will not accept any liability for material damage or personal injury or death sustained in conjunction with or prior to, during, or after the regatta. By participating in this event, each competitor agrees to release the race organizers from any and all liability associated with such competitor's participation in this event to the fullest extent permitted by law.

## **24. MEDIA RIGHTS**



24.1. Each participant shall acknowledge that all media and commercial rights belong exclusively to the OA and IM20CA, and shall grant to the OA and the IM20CA the unrestricted right and permission to use and publish any biographical information, text and images arising from the regatta including name, voice, image, likeness, biographical material as well as representations of the boats in any media worldwide (being television, print and digital media), including video footage, for the sole purposes of advertising, promoting, reporting and disseminating information regarding the 2021 Melges 20 World Championship and the participants in the regatta. The OA will exercise these rights in its sole discretion or as it may agree with the event sponsors. Unless previously authorized by the OA or IM20CA, participants shall not reproduce, publicly communicate or distribute images of the race in any way or form.

**FURTHER INFORMATION:**

**International Melges 20 Class Association Website:** [www.melges20.com](http://www.melges20.com)

**Twitter:** Melges20

**Facebook:** Melges 20

**Instagram:** Melges20

**North American Class Manager:** Keiran Searle

E-mail: [Ks.sailing@gmail.com](mailto:Ks.sailing@gmail.com)

Telephone: +1 949.423.8432

**CGSC Regatta Chair:** Andi Hoffman

E-mail: [CGSCrace@gmail.com](mailto:CGSCrace@gmail.com)

Telephone: 305.978.6051

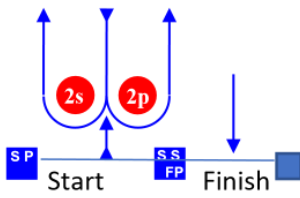
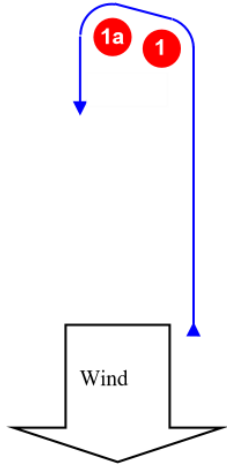
**PRO:** Shannon Bush

E-mail: [swmadero@gmail.com](mailto:swmadero@gmail.com)

Telephone: 361.319.0142

# ADDENDUM B - Course Diagrams

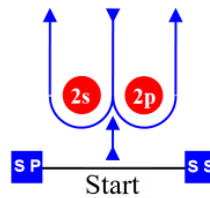
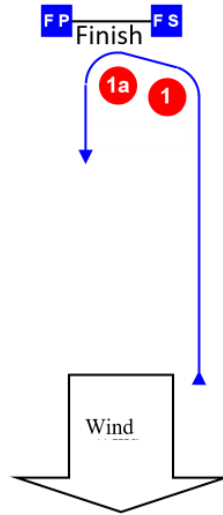
**L**



**Course: Leeward finish**

Signal	Mark Rounding Order
L	Start – 1 – 1a – 2s/2p – 1 – 1a – Finish

**W**



**Course: Windward Finish**

Signal	Mark Rounding Order
W	Start – 1 – 1a – 2s/2p – 1 – 1a – 2s/2p – Finish