

SAILING INSTRUCTIONS

ALBATROSS YACHT CLUB

ST ELMO'S Night Race

Friday, August 5th, 2022



1 RULES

This race will be governed by the rules as defined in *The Racing Rules of Sailing* (RRS) 2021-2024 and as modified by the 2022 Anchor Bay Yacht Racing Association (ABYRA) Handbook, this race's Notice of Race, and these Sailing Instructions. The ABYRA Handbook is available on the AYC website at www.sailayc.org/racing.

2 NOTICES TO COMPETITORS

All notices to competitors will be posted at www.Yachtscoring.com Notices may be posted at the free standing case to the west side of the parking lot at North Star Sail Club, but this is not required.

3 CHANGES TO SAILING INSTRUCTIONS

Any changes to the sailing instructions will be posted on www.Yachtscoring.com at least 24 hours prior to the first scheduled warning sound on the day of the race or will be available on the water from the RC boat when it displays code flag L per RRS 90.2.

4 SIGNALS MADE ASHORE

4.1 Signals made ashore will be displayed from the North Star Sail Club flag pole.

4.2 When flag AP is displayed ashore, "1 minute" is replaced by "not less than 30 minutes" in Race Signals AP.

5 SCHEDULE

The warning signal for the start is scheduled for 1900 on Friday, August 5th, 2022. A sequence alert, consisting of four or more sounds, may be sounded one minute ahead of the warning signal. The absence of a sequence alert shall be disregarded.

6 CLASSES AND RATINGS

6.1 Competing yachts will be classed and rated in accordance with the latest measurements and ratings accepted by and on file with the Organizing Authority Race Chairman. Boats will race under PHRF and One Design Rules as appropriate. A minimum of 5 boats is required for a separate class. Classes will be posted on www.Yachtscoring.com no less than 2 hours prior to the first scheduled warning sound. The Cruising Class will sail under the provisions of the NSSC Friday Night Fun Race Series and start at 19:30 according to their individual start times published for that series.

6.2 Class Flags

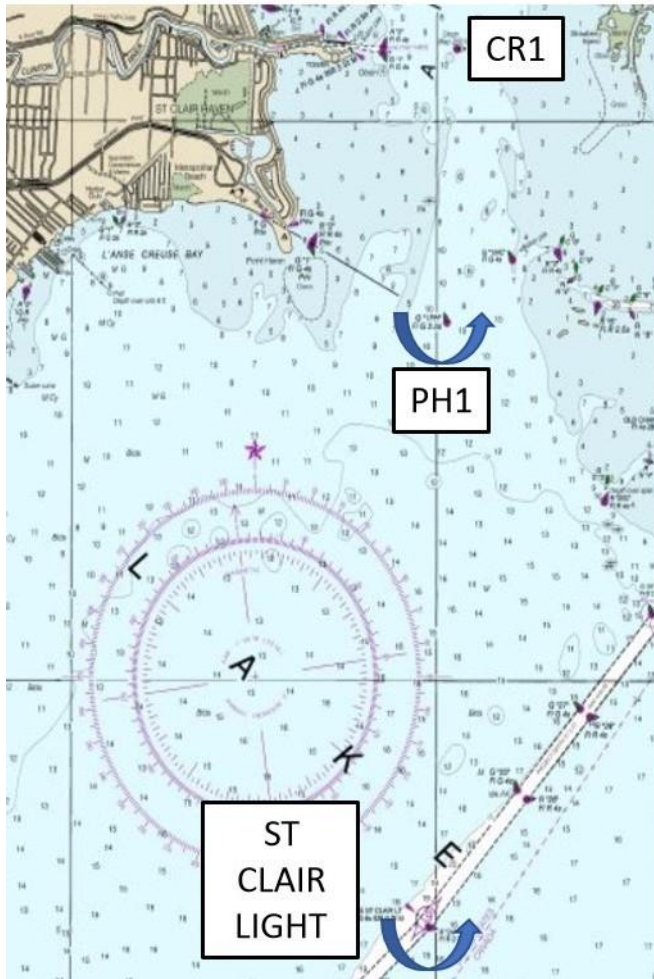
Classes will be assigned the following class flags and starting order:

Class 1	Pink	Start 1
Class 2	White	Start 2
Class 3	Gold	Start 3
Cruising	Lt Blue	Start 4

SAILING INSTRUCTIONS

7 RACING AREA

The racing area will be northern Lake St. Clair. The chart shows the approximate race area.



8 COURSES

The course begins at government buoy CR and heads south from CR, using government buoy CR, passing government buoy 1PH to port, rounding the St. Clair Light to port, and returning north passing 1PH to port and finishing between the RC Signal Boat and CR.

9 MARKS

The following table describes the approximate position of each mark.

Course Marks		
CR	42° 35.64'	82° 44.72'
1PH	42° 33.21'	82° 44.86'
St. Clair Light	42° 27.93'	82° 45.24'2

SAILING INSTRUCTIONS

10 THE START

- RRS 26 is unchanged.

11 SHORTENING OR ABANDONMENT AFTER THE START

- RRS 32 is unchanged

12 THE FINISH

- The race will finish between committee boat RC flag and government buoy CR.
- If the race committee is absent when a boat finishes, she should report her finishing time and her position relative to nearby boats to the race committee at the first reasonable opportunity.
- All skippers should identify their yachts, illuminate and call sail numbers, and be recognized when finishing at night. Skippers should note yacht ahead and yacht behind, if needed, for clarification when results are calculated.

13 TIME LIMIT

The time limit shall be five hours after a class start. If one boat sails the course and finishes within the time limit, the time limit for that class is extended by one hour. Boats that finish more than one hour after the first boat in that class finished will be scored Time Limit Expired (TLE) – the boat's score will be the number of competitors in the starting area plus 1.

14 PROTESTS AND REQUESTS FOR REDRESS

Protesting yachts must file within 90 minutes of the finish time of the last boat. Hearing will be set by the DRYA Protest Chairman. It is the responsibility of the skippers involved to follow the hearing guidelines outlined by DRYA.