



# SAILING INSTRUCTIONS

## Commodore's Cup Regatta

May 07, 2022

Organized by

*Tampa Sailing Squadron, Apollo Beach, Florida*

**Note:** in the paragraph numbering system below, some numbers in the sequence are intentionally left out.

*The notation '[DP]' in a rule in these Sailing Instructions means that the penalty for a breach of that rule may, at the discretion of the protest committee, be less than disqualification.*

### 1 RULES

- 1.1 Races will be governed by the *rules* as defined in the current *Racing Rules of Sailing* (RRS).
- 1.2 If there is a conflict between the Sailing Instructions and any other document governing the event, the Sailing Instructions take precedence. This changes RRS 63.7.

### 2 NOTICES TO COMPETITORS

- 2.1 Notices to competitors will be posted on the Official Regatta Notice Board located in the Kiosk adjacent to the flag pole.
- 2.2 The Race Committee will use VHF channel 68 to communicate with competitors.

### 3 CHANGES TO SAILING INSTRUCTIONS

- 3.1 Change to the sailing instructions will be
  - (a) posted before 2000 on May 06, or
  - (b) issued orally on the water by display of Lima flag (come within hail), and hail, and, circumstances allowing, by VHF radio channel 68.
- 3.2 In case of the possibility of severe weather, all inquiries should be made to TSS at 813-645-8377.

### 4 SIGNALS MADE ASHORE

- 4.1 Signals made ashore will be displayed from the flagpole at TSS.
- 4.2 When flag AP is displayed ashore, '1 minute' is replaced by 'not less than 45 minutes' in race signal AP. This changes RRS Signal AP.

### 5. SCHEDULE OF RACES

- 5.1 Race date is Saturday, May 07, 2022
- 5.2 One race will be sailed
- 5.3 1000 flag start for Spin, Non-Spin, & Racer-Cruisers  
1100 for Cruisers & Mother Load, pursuit start.
- 5.4 Competitors meeting is Friday, May 6, 2022 at 2000.

### 6. CLASS FLAGS

- 6.1 Class flags will be
  - #1 pennant: All Classes except Cruiser & Mother Load
  - #2 pennant: Cruiser & Mother Load

### 7. RACING AREA

- 7.1 Racing area will be on Hillsborough Bay, with the Starting area approximately 2 nm WNW of Apollo Beach, and detailed areas shown on Course attachments.

### 8 THE COURSES

- 8.1 The courses are shown in the Course Attachments.
- 8.2 No later than the warning signal, the Race Committee will display the Course to be sailed from the RC vessel.

### 9 MARKS

- 9.1 The Marks are described in the Course attachments.

### 11 THE START

- 11.1 The Start will be between a staff displaying an orange flag on the RC vessel and the course side of an orange inflatable mark.
- 11.2 The starting line will be located 0.25 nm directly downwind from TSS mark "x" (somewhere on the dashed circle around mark "x" as shown in the course diagrams). The windward mark will be a gate between TSS mark "x" and a yellow inflatable.
- 11.3 Boats not yet in their starting sequence shall avoid boats which are.
- 11.4 Boats which do not start within 15 minutes of their scheduled start time will be scored DNS without a hearing. This changes RRS A4 and A5.
- 11.5 All boats shall check in with the RC Signals vessel no later than ten minutes before their start time, hailing their sail number, name, and class. This must be done by voice, while on starboard tack, passing close to the stern of the RC vessel. VHF radio may NOT be used to check in. [DP]
- 11.6 When an individual recall is signaled, in addition to displaying the X flag, (X-ray, individual recall), and the sounding of one horn, the race committee will attempt to hail boats that are OCS.

### **13 THE FINISH**

- 13.1 The Finish will be between a staff displaying a blue flag on the RC vessel and an orange inflatable mark, 0.25 nm directly downwind of TSS mark "x". Boats should pass through the gate at mark "x" and proceed directly to the Finish line.

### **14 THE PENALTY SYSTEM**

- 14.1 In all classes the Scoring Penalty of RRS 44.3 will replace all Turns Penalties. To accept a Scoring Penalty, a boat must promptly display a yellow flag, and call the race committee's attention to it upon finishing.

### **15 TIME LIMITS**

- 15.1 Boats failing to finish within 60 minutes after the first boat in their Class sails the course and finishes will be scored DNF (did not finish) without a hearing. This changes RRS 35, A4, and A5.

### **16 PROTESTS AND REQUESTS FOR REDRESS**

- 16.1 Boats intending to protest shall do so in accordance with rule 61 and shall inform the race committee finish boat immediately after finishing by sailing to the opposite side of the committee boat from the finish line, identifying themselves by sail number and the sail number of the boat they are protesting. The protesting boat will continue to display a protest flag and not leave the finish area until acknowledged by the race committee. This changes RRS 61.1.
- 16.2 Protest forms are available at TSS.
- 16.3 Protests and requests for redress shall be hand-delivered no later than one hour after the RC Signal Boat docks, to either Principal Race Officer Henry Morse (863-838-1268) or Regatta Chair Wesley Shaw (813-439-7600), or to the Race Committee desk.
- 16.4 Notice will be posted no later than 30 minutes after the protest time limit informing competitors of location and time of any hearings in which they are parties or named as witnesses.

### **17 SCORING**

- 17.1 PHRF time-on-distance will be used to calculate individual starting times on the pursuit start and handicaps on the flag start.
- 17.2 Unless the course is shortened, each boat's score will be the order she finishes on the pursuit start and the corrected score for the flag start.
- 17.3 If the course(s) are shortened, corrected finish times and order will be calculated using the shorter course length.

### **18 SAFETY REGULATIONS**

- 18.1 Any boat that challenges a vessel confined to the Tampa Bay shipping channels in such a way as to cause them to file a report, or who violates a moving or static safety or security zone resulting in the filing of a report, will be disqualified. This changes RRS 63
- 18.2 A competitor who intentionally puts trash in the water may be protested by other boats or the race committee.

### **27 RADIO COMMUNICATIONS**

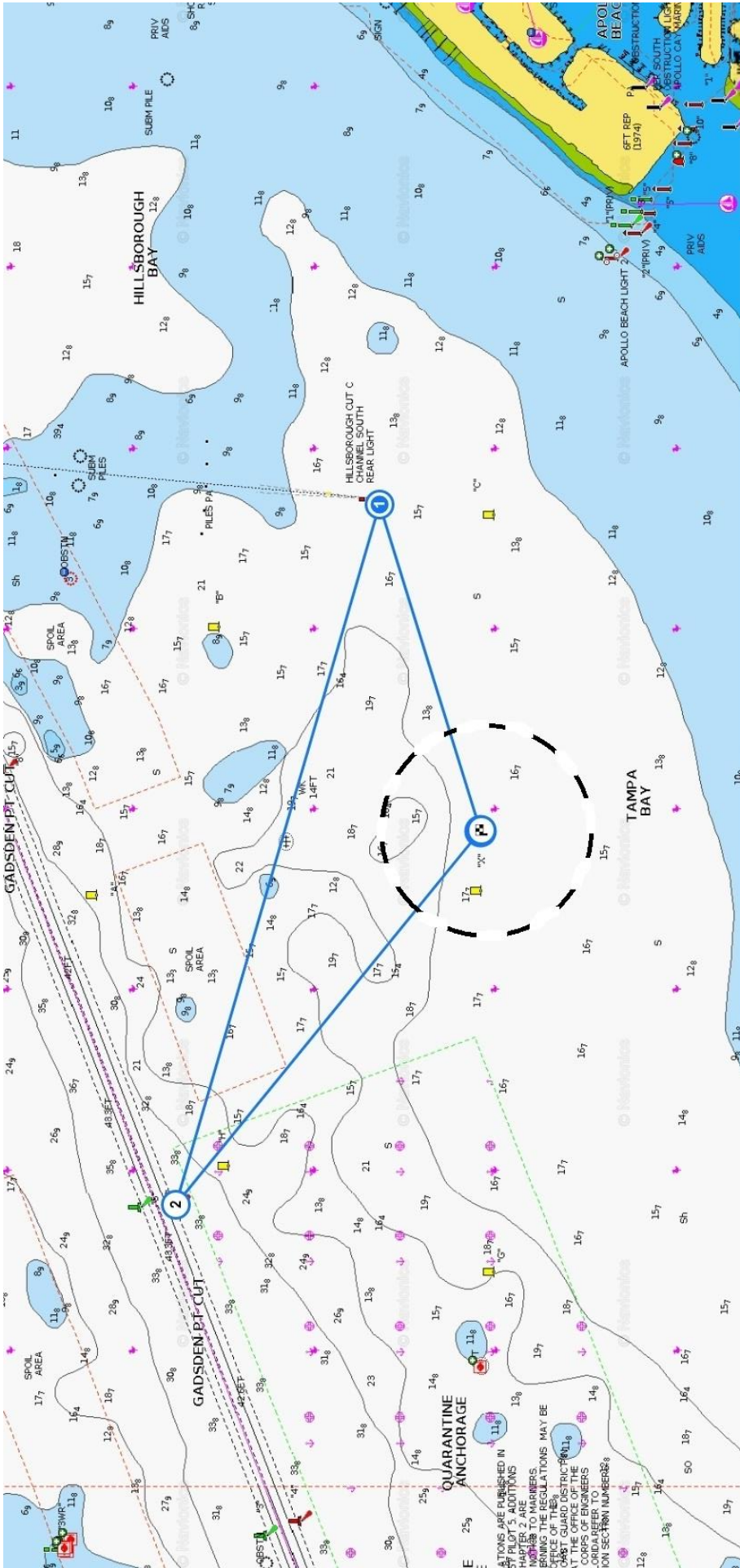
- 27.1 The race committee will monitor VHF channel 68.
- 27.2 A boat leaving the racing area before finishing shall notify the Race Committee signal vessel over VHF, hailing her name, sail number, and division or class, and receive acknowledgment from the race committee. [DP]
- 27.3 Except in an emergency, a boat shall neither make radio transmissions while racing nor receive radio communications not available to all boats. This restriction also applies to mobile telephones. [DP]

### **28 PRIZES**

Prizes will be presented on Saturday evening. Final results will be posted after any protest hearings. The final results may affect the awarded prizes.

### **29 DISCLAIMER OF LIABILITY**

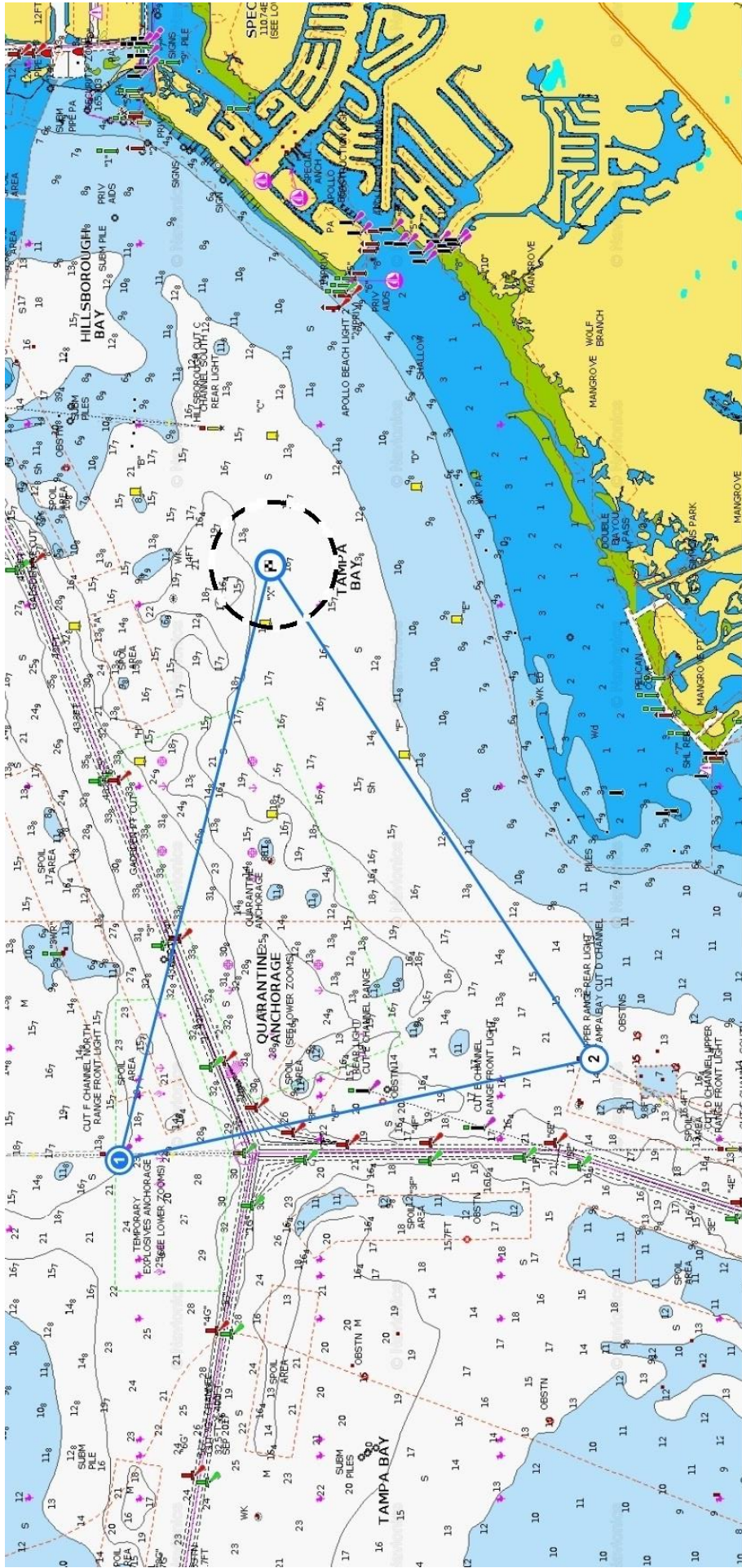
Competitors participate in the regatta entirely at their own risk. See RRS 4, Decision to Race. The Organizing Authority will not accept any liability for material damage, personal injury, or death sustained in conjunction with, or prior, during, or after the regatta, including any potential exposure to infectious disease, notably covid 19.



- [Start] RC boat and Starting Pin located on dashed circle 0.25 nm downwind of Checked Flag.
- [Checked Flag] TSS "x" Mark – first Mark after Start – due windward of Starting Line. Leave Mark to port if RC displays red shape, or stbd if green.
- [1] Range Tower – Cut "C" channel, southbound, rear tower. Leave to port.
- [2] Channel Marker, #6, red, flashing, 4 seconds. Leave to port.
- [Checked Flag] TSS "x" Mark. Finish line.

**COURSE A**

Leg: 0.25 nm.  
 Leg: 0.9 nm.  
 Leg: 1.9 nm.  
 Leg: 1.3 nm. Total course: 4.35 nm



Total Course: 8.65 nm.

[Start] RC boat and Starting Pin located on dashed circle 0.25 nm downwind of Checkered Flag.

[Checked Flag] TSS "x" Mark (27.782223, -82.470332) First Mark after Start. Due windward of Starting Line. Leave Mark to Port if RC displays red shape, or Stbd if green.

[1] Range Tower - Cut "F", northbound, front tower (27.795491, -82.523182). Leave to Port.

[2] Range Tower - Cut "D", northbound, rear tower (27.753358, -82.513617). Leave to Port.

[Checked Flag] TSS "x" Mark (27.782223, -82.470332). Finish line.

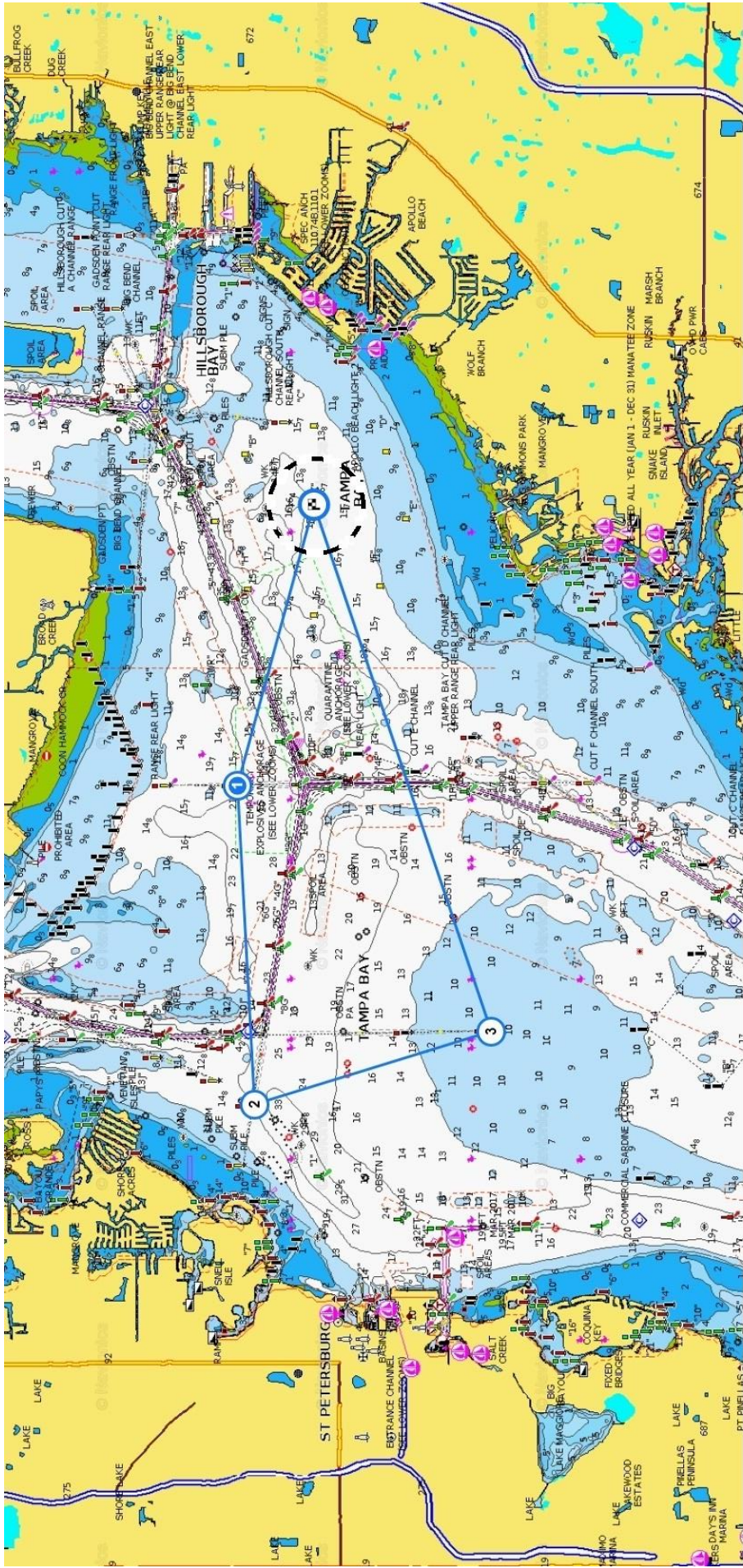
# Course B

Leg: 0.25 nm.

Leg: 2.9 nm.

Leg: 2.6 nm.

Leg: 2.9 nm.

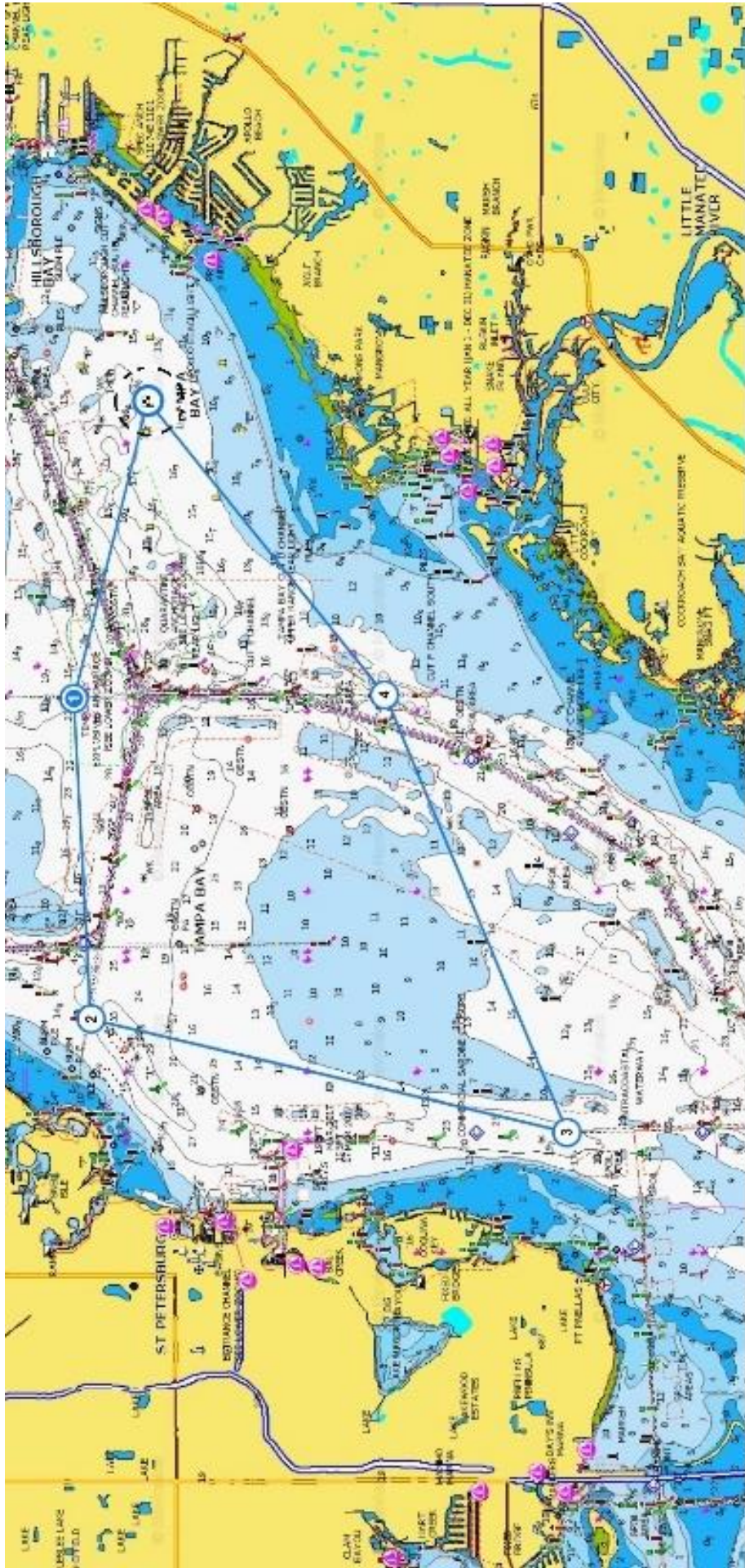


**Total Course: 14.95 nm.**

- [Start] RC boat and Starting Pin located on dashed circle 0.25 nm downwind of Checkered Flag.
- [Checked Flag] TSS "x" Mark [27.782223, -82.470332], (27° 46' 56", -82° 28' 13"). First Mark after Start. Due windward of Starting Line. Gate mark. Sail through.
- [1] Range Tower – Cut "F", NB, front tower [27.795491, -82.523182], (27° 47' 44", -82° 31' 23"). Leave to Port.
- [2] Range Tower – Cut "G", WB, front tower [27.793006, -82.587142], (27° 47' 35", -82° 35' 14"). Leave to Port.
- [3] Range Tower – Cut "J", SB, rear tower [27.750832, -82.572132], (27° 45' 03", -82° 34' 20"). Leave to Port.
- [Checked Flag] TSS "x" Mark [27.782223, -82.470332], (27° 46' 56", -82° 28' 13"). Finish Line.

- Leg: 0.25 nm.
- Leg: 2.9 nm.
- Leg: 3.4 nm.
- Leg: 2.7 nm.
- Leg: 5.7 nm.

# Course C



Total Course: 20.75 nm.

[Start] RC boat and Starting Pin located on dashed circle 0.25 nm downwind of Checkered Flag.  
 [Checkered Flag] TSS "x" Mark [27.782223, 82.470332], (27° 46' 56", 82° 28' 13"). First Mark after Start.

Due windward of Starting Line. Gate mark. Seal through.

- [1] Range Tower - Cut "F", NB, front tower [27.795491, -82.523182], (27° 47' 44", -82° 31' 23"). Leave to Port.
- [2] Range Tower - Cut "G", WB, front tower [27.793006, 82.587142], (27° 47' 33", 82° 35' 14"). Leave to Port.
- [3] Chal Mole - Pt. Pinellas, #6, red, fishing, 4 secs, [27.708368, 82.609431], (27° 42' 30", 82° 36' 34"). Leave to Port.
- [4] Range Tower - Cut "F", SB, front tower [27.740905, -82.527683], (27° 44' 27", -82° 31' 22"). Leave to Port.
- [Checkered Flag] TSS "x" Mark [27.782223, -82.470332], (27° 46' 56", -82° 28' 13"). Finish line.

- Leg: 0.25 nm.
- Leg: 2.9 nm.
- Leg: 3.4 nm.
- Leg: 5.2 nm.
- Leg: 5.0 nm.
- Leg: 4.0 nm.

# Course D