



INTERNATIONAL ETHELLS CLASS PRE-WORLDS & WORLD CHAMPIONSHIP 10-12 SEPTEMBER 2022 18-24 SEPTEMBER 2022

ORGANIZING AUTHORITY
ROYAL YACHT SQUADRON
IN CONJUNCTION WITH
THE COWES ETHELLS FLEET

NOTICE OF RACE v2

Changes highlighted in yellow

'Events' means 'Pre-Worlds and World Championship'

'Pre-Worlds' means the 'Pre-World's only'

'Worlds' means the 'World Championship' only'

1. RULES

- 1.1. The Events are governed by the rules as defined in the Racing Rules of Sailing (RRS).
- 1.2. The first two sentences of RRS 44.1 are changed to: "A boat may take a One-Turn Penalty when she may have broken one or more rules of Part 2 or RRS 31 in an incident while racing. However, when she may have broken one or more rules of Part 2 while in the zone around a mark other than a starting mark, her penalty shall be a Two-Turns Penalty."
- 1.3. In RRS 44.2 insert after the first sentence: "However, if Mark 1a (spreader mark) is set, a boat may take a penalty for an incident in the zone around Mark 1 or on the leg between Mark 1 and Mark 1a, as soon as possible after leaving the zone around Mark 1a"
- 1.4. (DP) International Etchells Association Class Rule.
- 1.5. The RYA national prescriptions that apply are detailed in Addendum B.
- 1.6. If there is a conflict between languages the English text takes precedence.
- 1.7. [NP] Bow numbers will be assigned by the Organizing Authority (OA) and supplied and fixed to each participating boat prior to inspection. They shall be affixed to the hull

according to the instructions provided by the OA and shall be retained on both sides of the hull throughout the Worlds. Boats failing to follow these requirements are subject to protest only by the Race Committee (RC) or Events Technical Committee (TC).

- 1.8. A Skipper shall use only those sails presented in accordance with Class Rule C10, and they shall not be recut or altered during the Worlds.
- 1.9. Each sail presented shall be re-measured and approved by an official measurer or delegated equipment measurer immediately prior to the Worlds and shall not thereafter be recut or altered during the Worlds. After such re-measurement, repairs to sails pursuant to all applicable rules are permissible only upon prior approval of the International Jury.
- 1.10. Where a skipper is using sails with a different sail number than that of the boat's hull, the skipper will inform the Organising Committee before commencement of racing. All sails being used must exhibit the same sail number.
- 1.11. If, through no fault of its personnel, a boat's hull or spar or sail is rendered incapable of continuing the Events, the Skipper may petition the Jury for permission to substitute a replacement hull or spar or sail for the remainder of the Events.
- 1.12. [DP] A boat shall not carry any unreasonable quantities of water or anything else for the purpose of adding ballast. The amount of water that is stored in containers or bottles which is permitted to be carried should be sufficient for the crew for drinking purposes during the day's racing, to this end a maximum of 10 litres of water per boat is acceptable.
- 1.13. Notices to Mariners for the Ports of [Southampton](#), [Portsmouth](#) and [Cowes](#) apply.

2. SAILING INSTRUCTIONS

The sailing instructions will be available on the Yachtscoring website by 10 August 2022. www.yachtscoring.com

3. COMMUNICATION

- 3.1. The Official Notice Board (ONB) will be online at www.yachtscoring.com and the Race Office will be at Cowes Yacht Haven.
- 3.2. All boats shall carry a Marine VHF Radio capable of receiving all normal **International VHF Channels**. All VHF communication shall be on International VHF channels.
- 3.3. On the water the Race Committee will make courtesy broadcasts to competitors on VHF radio. The channel will be stated in the SIs.
- 3.4. [DP] The use of mobile/cell phones, or any device capable of sending and/or receiving external electronic communication and/or connecting to the internet is prohibited after the first Warning Signal on each race day until the boat has completed racing that day, except in an emergency threatening the safety of any member of the crew or the flotation of the boat.

4. ELIGIBILITY AND ENTRY

- 4.1. The Events are open to all boats of the Etchells Class, with a valid measurement certificate.
- 4.2. Entry allocation is **100%** of each fleet's paid boats rounded up. Qualification to enter shall be verified by the entrant's Fleet Captain prior to the entry being accepted. No entry

All correspondence should be directed to:

The Royal Yacht Squadron, The Castle, Cowes, UK, PO31 7QT. Tel: 01983 292191, Email: mail@rys.org.uk

can be considered final until the entry's eligibility has been verified by the OA with the IECA Secretariat. Additionally, eligibility is extended to those who qualify through a Qualifying Event as defined in Class Appendix A 7.C.

- 4.3.** Boats may enter the event by registering online at www.yachtscoring.com.
- 4.4.** To be considered an entry in the Events, a boat shall complete all registration requirements and pay all fees.
- 4.5.** Late entries will be accepted at the discretion of the OA.
- 4.6.** Each skipper and crew member of each boat shall be weighed prior to racing in the Worlds at Cowes Yacht Haven at times shown in the Schedule at NoR 9.2 or required by Class Rule C2.

5. FEES

- 5.1.** The entry fees are:
- (a) For the Pre-Worlds, £360 for a three-person crew and £390 for a four-person crew.
- (b) For the Worlds, £1,900 for a three-person crew and £2,100 for a four-person crew.
- 5.2.** The closing date for entries will be 1159 hrs on Wednesday 10 August 2022.
- 5.3.** Late entries will be accepted at the discretion of the OA and there will be a late entry supplementary fee of £100 for the Pre-Worlds and £500 for the Worlds.
- 5.4.** The entry fee for the Pre-Worlds includes:
- (a) Social tickets for each crew member for one informal social and buffet supper at the Royal Yacht Squadron.
- 5.5.** The entry fee for the Worlds includes:
- (a) Launching at Cowes Yacht Haven on or after Thursday 8th September.
- (b) In-water berth at Cowes Yacht Haven from Thursday 8th September to Sunday 25th September inclusive.
- (c) Up to three additional 'lift out and relaunch' services during the Events, including for measurement.
- (d) Recovery at Cowes Yacht Haven on Saturday 24th or Sunday 25th September.
- (e) Social tickets for each crew member at the following events at the Royal Yacht Squadron:
- (i) Opening ceremony
- (ii) Prize-giving dinner

6. CREW LIMITATIONS

- 6.1.** All crew shall all be members of the International Etchells Class Association. See Constitution rule. The skipper shall be an Owner member.
- 6.2.** In addition to NOR 6.1 Guest Skippers may enter the Events. A Guest Skipper is a Skipper, but for the purposes of these guidelines being a Non-Owner, the Guest Skipper must:
- (a) be age 29 or under as of 1 January of the year of the Events; and
- (b) borrow or charter a boat from an Owner or entity in good standing in the Fleet; and
- (c) be at least a Non-Owner Class Member
- 6.3.** The Skipper shall be:
- (a) be an Owner Member of the Fleet they represent and be so registered with the Etchells Class National

Association prior to the first race of their Fleet's qualification races;

- (b) have sailed as a Skipper in their Fleet's Worlds qualification races unless approved by the IGC.
- (c) not have attempted to qualify for the applicable Worlds as an Skipper, in a fleet other than the one being represented during the six months prior to the first race of the Worlds.
- (d) A Skipper belonging to more than one fleet may compete for qualification in one fleet only, which shall be the Fleet sailing the earliest qualifying series, unless such Skipper advises the Fleet Captain of such Fleet in writing before the first race in that qualifying series that they will not be competing for qualification in that series.

7. ADVERTISING

- 7.1.** All boats shall comply with Class Rule C.4.

8. QUALIFYING SERIES AND FINAL SERIES

- 8.1.** The Pre-Worlds will be a single series.
- 8.2.** The Worlds will be a single series.

9. SCHEDULE

- 9.1.** The times shown in the table below are UTC plus 1 hour (British Summer Time - BST).
- 9.2.** Indicative Tide Times are for High Water Portsmouth.

DAY HWP (BST)	TIME	FIRST WARNING SIGNAL	NOTES
Sat 10 Sep HW 1213 4.8m		1155	Pre-Worlds Race 1
Sun 11 Sep HW 1256 4.9m		1055	Pre-Worlds Race 2 Pre-Worlds Race 3
Mon 12 Sep HW 1341 4.9m		1055	Pre-Worlds Race 4 Pre-Worlds Race 5
Tue 13 Sep	0900-1600		Hull measurement
Wed 14 Sep	0900-1600		Hull measurement
Thu 15 Sep HW 1543 4.6m	0900 – 1600		Hull/Spar/Sail Measurement & Registration at Cowes Yacht Haven (CYH)
Fri 16 Sep HW 1617 4.4m	0900 – 1600		
Sat 17 Sep HW 1653 4.1m	0900 – 1600		
Sun 18 Sep HW 1737 3.8m	0830- 1200 1800 for 1830	1255	Weigh in – CYH Practice Race Opening ceremony at RYS
Mon 19 Sep HW 0620 3.6m		1055	Worlds Race 1 Worlds Race 2

Tue 20 Sep HW 0816 3.6m		1055	Worlds Race 3 Worlds Race 4
Wed 21 Sep HW 0934 3.8m	Until 1900	1055	Worlds Race 5 Worlds Race 6 Re-Weigh (after racing) at CYH
Thu 22 Sep HW 1027 4.1m	0830-0930	1055	Re-weigh at CYH Race 7
Fri 23 Sep HW 1106 4.3m		1055	Worlds Race 8
Sat 24 Sep HW 1140 4.5m	1900 for 1930	1055	Worlds Race 9 Prizegiving dinner at RYS

- 9.3. The intention of the Race Committee is to run **five (5)** races during the Pre-Worlds and nine (9) races during the Worlds. There will also be an additional practice race on Sunday 18 September.
- 9.4. The Race Committee intends to run no more than two (2) races each day. However additional races may be sailed in order to complete the programme because of weather or other reasons.
- 9.5. On the last day of racing at the Worlds, no warning signal will be made after 1500.

10. EQUIPMENT INSPECTION

- 10.1. Each boat shall produce a valid measurement certificate and measurement forms.
- 10.2. Official Registration and Measurement are available on Thursday 15, Friday 16 and Saturday 17 September in Cowes Yacht Haven (CYH) from 0900 – 1600 each day or such earlier time approved by the OA.
- 10.3. Boats may be inspected at any time during the Events.
- 10.4. After measurement until completion of racing, no boat, sail or any item of measured equipment shall leave the venue without prior written permission given by the OA and posted on the Official Notice Board.

11. CLOTHING AND EQUIPMENT

- 11.1. See Class Rule C3.2.

12. VENUE

- 12.1. Racing will take place from a Committee Vessel in the Central and Eastern Solent.
- 12.2. To indicate the general race area a local racing chartlet can be found in Addendum A of this NoR.

13. COURSES

- 13.1. The courses to be sailed will be a windward / leeward configuration as described in the Sailing Instructions.

14. PENALTY SYSTEM

- 14.1. The first two sentences of RRS 44.1 are changed to: "A boat may take a One-Turn Penalty when she may have broken one or more rules of Part 2 or RRS 31 in an

incident while racing. However, when she may have broken one or more rules of Part 2 while in the zone around a mark other than a starting mark, her penalty shall be a Two-Turns Penalty".

- 14.2. In RRS 44.2 insert after the first sentence: "However, if Mark 1a (spreader mark) is set, a boat may take a penalty for an incident in the zone around Mark 1 or on the leg between Mark 1 and Mark 1a, as soon as possible after leaving the zone around Mark 1a".

- 14.3. For the Worlds. an International Jury has been appointed in accordance with RRS 91(b). Its decisions will be final as provided in RRS 70.5.

15. SCORING

- 15.1. For the pre-Worlds and Worlds the low point scoring system will be used as in RRS Appendix A with the following changes.
- 15.2. In the Pre-Worlds, **five (5)** races are scheduled.
- 15.3. In the Pre-Worlds, one (1) race is required to be completed to constitute a series.
- 15.4. In the Pre-Worlds, a boat's series score shall be the total of her race scores.
- 15.5. In the Worlds, nine (9) races are scheduled
- 15.6. In the Worlds, six (6) races are required to be completed to constitute a series
- 15.7. **In the Worlds, when fewer than seven (7) races have been completed, a boat's series score will be the total of her race scores.**
- 15.8. **In the Worlds. when seven (7) or more races have been completed, a boat's series score will be the total of her races excluding her worst score.**

16. SUPPORT PERSON VESSELS

- 16.1. [DP] Team leaders, coaches, other support personnel and their coach and support boats shall stay outside areas where boats are racing from the time of the first Warning Signal of the day until racing has been concluded for the day. Between races, coach and support boats shall not approach, communicate with or transfer provisions or equipment to or from their supported boats unless in a medical or emergency requirement threatening the health of the crew or the flotation of the boat and only with the expressed permission of the International Jury.
- 16.2. [DP] Support person vessels shall register at the Race Office and be marked with identifying flags issued by the OA for a fee of £10.
- 16.3. All support person vessels shall carry a marine VHF radio and comply with RRS 37 'Search and Rescue Instructions'.

17. CHARTERED OR LOANED BOATS

- 17.1. [DP] In accordance with RRS Appendix G3, a chartered or loaned boat may carry national letters or a sail number in contravention of her class rules, provided that the race committee is notified at Registration and has approved her sail identification before the first race.

18. BERTHING

- 18.1. [DP]Boats shall be kept in their assigned places in Cowes Yacht Haven while in harbour.

19. LAUNCHING AND HAUL OUT RESTRICTIONS

19.1. Boats shall not be launched, relaunched or hauled out after 1800 on Saturday 17 September except with and according to the terms of prior written permission of the race committee.

20. DIVING EQUIPMENT AND PLASTIC POOLS

20.1. [DP] For the Pre-Worlds and Worlds, underwater breathing apparatus and plastic pools or their equivalent shall not be used around boats between the warning signal of the first race and the end of each event.

20.2. [DP] No person shall undertake any swimming, underwater or diving activities of any kind within the harbour without a valid permit to dive from the Cowes Harbour Master or the manager of the marina you wish to dive at. This prohibited activity is legislated under Cowes Harbour Commission [General Direction 4.4](#).

20.3. Keelboats shall not be cleaned below the waterline by any means between the preparatory signal of the first race of the Worlds and the end of the Worlds.

21. DATA PROTECTION

21.1. The personal information you provide to the Organizing Authority will be used to facilitate your participation in the Events. If you have agreed to be bound by the Racing Rules of Sailing and the other rules that govern the Events (the rules), the legal basis for processing that personal information is contract. If you are not bound by the rules, the legal basis for processing that personal information is legitimate interest. Your personal information will be stored and used in accordance with the Organizing Authority's privacy policy. When required by the rules, personal information may be shared with the RYA, your national authority and/or World Sailing. The results of the Events and the outcome of any hearing or appeal may be published.

21.2. Competitors automatically grant to the Organizing Authority, without payment, the right in perpetuity to make, use and show any motion pictures, still pictures and live, taped or filmed television of or relating to the Events provided that they do not infringe the privacy rights of participants.

21.3. The Royal Yacht Squadron (RYS) and Royal Yacht Squadron Limited (RYSL) Armorial, Burgees and all other associated logos shall not be used by any club or individual without the prior written permission of the RYS.

22. RISK STATEMENT

22.1. Rule 3 of the Racing Rules of Sailing states: "The responsibility for a boat's decision to participate in a race or to continue racing is hers alone."

22.2. Sailing is by its nature an unpredictable sport and therefore inherently involves an element of risk. By taking part in the Events, each competitor agrees and acknowledges that:

- (a) They are aware of the inherent element of risk involved in the sport and accept responsibility for the exposure of themselves, their crew and their boat to such inherent risk whilst taking part in the Events;
- (b) They are responsible for the safety of themselves, their crew, their boat and their other property whether afloat or ashore;

(c) They accept responsibility for any injury, damage or loss to the extent caused by their own actions or omissions;

(d) Their boat is in good order, equipped to sail in the Events and they are fit to participate;

(e) The provision of a race management team, patrol boats, and other officials and volunteers by the Events organizer does not relieve them of their own responsibilities;

(f) The provision of patrol boat cover is limited to such assistance, particularly in extreme weather conditions, as can be practically provided in the circumstances;

(g) It is their responsibility to familiarize themselves with any risks specific to this venue or these Events drawn to their attention in any rules and information produced for the venue or Events and to attend any competitor or safety briefing held for the Events;

23. INSURANCE

Each participating boat shall be insured with valid third-party liability insurance with a minimum cover of £3 million per incident or the equivalent.

24. PRIZES

24.1. For the Worlds, the Overall Series perpetual trophies will be awarded as follows:

(a) The Founders Trophy, an antique silver bowl, for the overall World Championship winner – given by Mary Etchells.

(b) C Stanley Ogilvy Masters Trophy, an antique sextant and box, for the winner of the Masters' Division (Masters' category is defined as helmsman 50 years of age or older) – given by the Members and Governors of the Class to honour Stan Ogilvy's 17 years of service to the Class as Chairman of the Technical Committee.

(c) Robert W Sides Seniors Trophy, a Lucite boat on marble block, for the winner of the Seniors' Division (Seniors' category is defined as helmsman 60 years of age or older – should fewer than two skippers qualify for this division the age limit for the year will be 55 years or older) – given by US Etchells Fleet 4.

(d) Grand Masters Trophy, a crystal plate mounted on a stainless steel base given by the International Etchells Class Association of Australia in honor of Ian Kingsford Smith, Awarded to the skipper and crew with best result at the World Championship with a combined age of 150 years for a three person crew or 200 years for a four person crew, (ages being as at midnight on the last day of registration).

(e) Bill Munster Sportsmanship Trophy, a ceramic tile with a picture of an Etchells mounted on a wooden plaque, presented by Jim DeWitt. To be awarded annually to the competitor who in the eyes of the Organizing Authority, Race Committee and International Jury exhibits the most sportsmanlike qualities of the event.

(f) Corinthian Cup, a pewter cup on a wood base, given by Patricia Stadel in recognition of outstanding achievement by Corinthian sailors to be awarded to the so defined (ISAF Category 1) Corinthian skipper and crew achieving the best result in the International Etchells World Championship.

(g) Best Female Helm Trophy, a wooden backing with raised brass Etchells half hull with sails, presented by

US Detroit Fleet #7. Awarded to the female helm achieving the best result.

- (h) Next Generation Trophy, a silver cup, presented by the friends of Hans Fogh. Awarded to the skipper and crew, all 29 or younger as of the first day of competition, achieving the best result.
- (i) Bill Bennett Crew Trophy, a wooden plaque, presented by Fleet 13. Awarded to the winning crew.

24.2. Individual race perpetual trophies will be awarded for Worlds races as follows:

- (a) Race 1: A silver tray for the first race winner – given by Etchells Fleet 6, Newport Beach, California, USA.
- (b) Race 2: A half model, the Peter Tirion/Etchells Association of Canada perpetual trophy for the second race winner – given by the Royal Canadian Yacht Club, Toronto, Ontario, Canada.
- (c) Race 3: A photo engraved plaque of an Etchells under spinnaker on timber backing for the third race winner – given by the Brisbane Etchells Fleet, Australia.
- (d) Race 4: A half model for the fourth race winner – given by US Etchells Fleet 4 and the Eastern Yacht Club, Marblehead, Massachusetts, USA.
- (e) Race 5: A silver bowl and stand for the fifth race winner – given by US Etchells Fleet 12 and the St Francis Yacht Club, San Francisco, California, USA.
- (f) Race 6: A silver plate, the American Yacht Club Centennial for the sixth race winner - given by the American Yacht Club, Rye, New York, USA.
- (g) Race 7: A framed symbolic Kauri wood carving. Donated by the Gulf Harbour Yacht Club, Gulf Harbour, New Zealand.
- (h) Race 8: A crystal cube containing three-dimensional images of two Etchells for the eighth race winner, the Jim Annand Trophy – given by the International Etchells Class Association of Australia in honour of Jim Annand.
- (i) Race 9. A half model for the ninth race winner - given by the Cowes Fleet in honour of Cowes Fleet member Ante Razmilovic, the winner of the first race nine at the 2002 World Championship.

24.3. Other trophies will be awarded at the discretion of the Organising Authority.

25. FURTHER INFORMATION

For further information please contact:

The Royal Yacht Squadron
The Castle
Cowes, UK
PO31 7QT
Tel +44 1983 292 191
mail@rys.org.uk

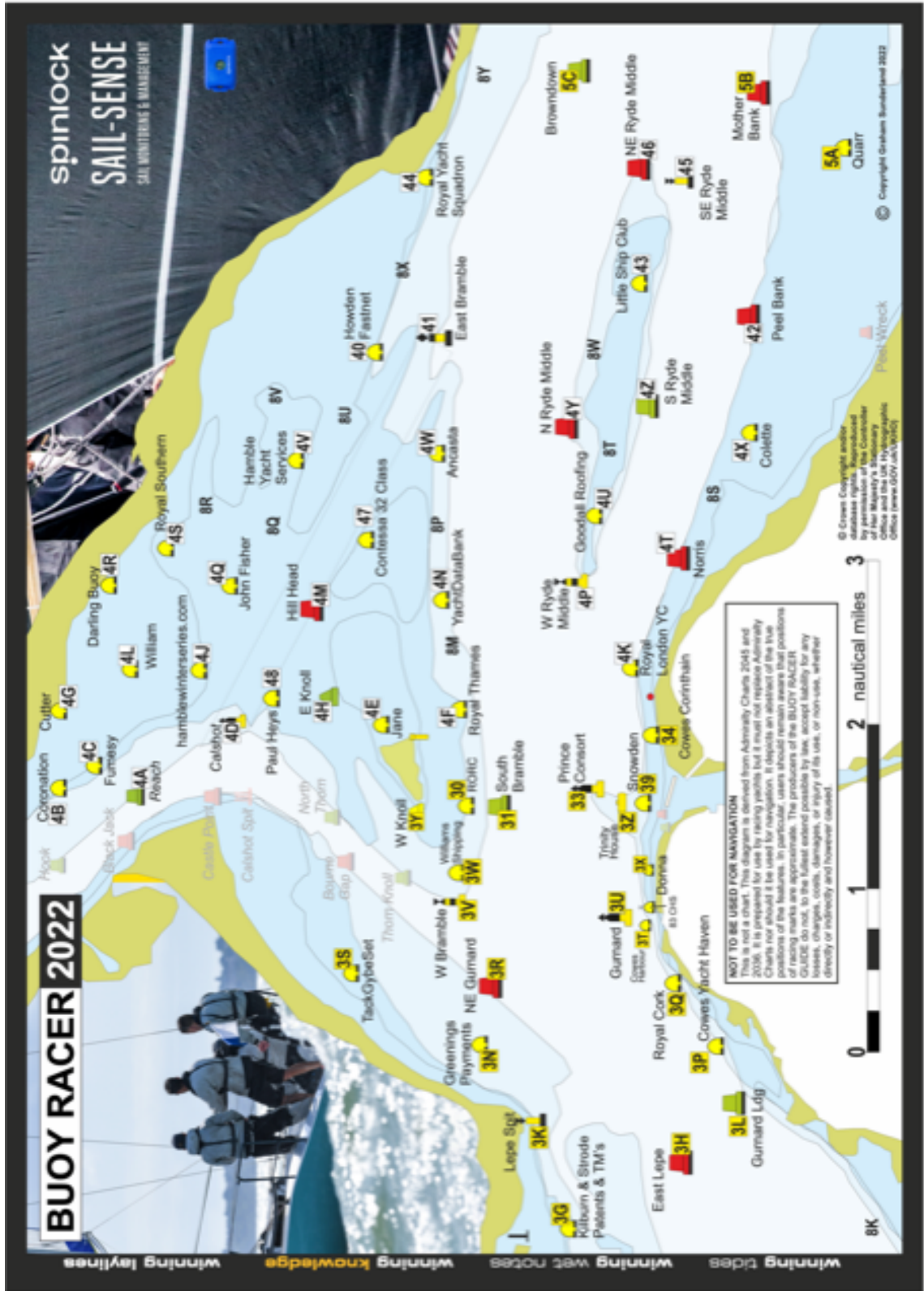
NOTICE OF RACE ENDS

1. SOCIAL ARRANGEMENTS

Further details of the social programme will be available in a separate document.

ADDENDUM A.

See below a chartlet of the Racing Area showing the Solent Two Character Codes.



Provided by Graham Sunderland at winningtides.co.uk

ADDENDUM B.

RYA prescriptions that apply to the Worlds

Rule 4 Acceptance of the Rules

Add new rule 4.6:

Each competitor and boat owner shall ensure that their support persons comply with the rules.

Add new rule 4.7:

The penalty for a breach of rule 4 shall be at the discretion of the protest committee.

Rule 6 Anti-Doping

The national authority procedural rules required to implement the World Anti-Doping Code through World Sailing Regulation 21 are the RYA Anti-Doping Rules, as published on the RYA website.

Rule 67 Damages

1. Any issue of liability or claim for damages arising from an incident while a boat is bound by The Racing Rules of Sailing shall be subject to the jurisdiction of the courts and not considered by a protest committee.
2. A boat that takes a penalty or retires does not thereby admit liability for damages or that she has broken a rule.

86.3 Rule Changes

An Organizing Authority wishing to develop or test alternative racing rules, other than test rules approved by World Sailing, shall obtain prior approval from the RYA. An application form is available from the RYA. The notice of race shall include the approved alternative rules. The Organizing Authority shall promptly report the results of the development or test to the RYA.

88.2 Changes to National Authority Prescriptions

Notices of race and sailing instructions shall not change a prescription of the RYA. However, when an international jury has been appointed for an event, only the prescriptions to rules 4, 6, 67, 86.3 and 88.2 shall apply.

Additional RYA prescriptions that apply during the Pre-Worlds

Rule 40 Personal Flotation Devices

When a rule requires a personal flotation device to be worn, the device shall comply with the specifications for the personal flotation devices that the boat is required to carry. If more than one specification applies, the personal flotation device worn shall comply with the highest of them.

Rule 70.5 Right of Appeal

1. RYA approval is not required to deny the right of appeal under rule 70.5(a).
2. The RYA will not consider approving the denial of the right of appeal under rule 70.5(b) unless
 1. (a) the RYA decides there is good reason to approve. The cost of an international jury which would otherwise be appropriate for the event is not a good reason.
 2. (b) the protest committee is approved by the RYA.
 3. (c) application to the RYA is made no later than one month before the notice of race is to be issued. In exceptional circumstances, the RYA may consider a later application.A copy of the RYA letter of approval shall be displayed on the official notice board.
3. However, the denial of appeal shall not apply to a party to a hearing under rule 69.2, Misconduct, but the decision of the protest committee shall determine the results of the event.

Rule 78 Compliance with Class Rules; Certificates

Add new rule 78.3:

The race committee or technical committee may inspect or measure any boat or personal equipment, at any time.

Terms in **bold** are as defined in the Equipment Rules of Sailing.