



PRESENTED BY



NEW YORK YACHT CLUB RACE WEEK AT NEWPORT

Presented by ROLEX

July 13-16, 2022
Newport, Rhode Island

SAILING INSTRUCTIONS incorporating AMENDMENT 1 (in red)

1 RULES

- 1.1** The event will be governed by the rules as defined in *The Racing Rules of Sailing* (RRS), including the current ORC rules, the current NYYC Classics Rules incorporating CRF, the current PHRF Regulations as administered by the PHRF of Narragansett Bay, and the current Class Rules for any one-design classes.
- 1.2** Safety Equipment Requirements:
 - a) Addendum 1 – US Safety Equipment Requirements (USSER)
 - All boats shall minimally comply with the US Nearshore section of the USSER and shall comply with their class rules, where applicable.
 - USSER 2.4.2, 2.4.3, and USSER 2.4.4.1 through 2.4.9 regarding Hull and Structure: Lifelines shall apply, except that boats not normally rigged with lifelines are exempt from these requirements. RRS 40.1 shall apply to exempt boats and crew shall wear approved PFDs at all times while racing.
 - In the event of a conflict between these Requirements and applicable class rules, the class rules shall apply.
 - Addendum 2 – The NYYC Classics Rules shall apply to all boats racing in the Classics division.
- 1.3** The US Sailing prescription to RRS 63.2 is deleted.
- 1.4** The NYYC Classics Rules that are posted as NOR Addendum 2 shall apply to all boats sailing in the Classics division.
- 1.5** The current PHRF-NB Regulations shall apply to boats racing under PHRF. There are no crew weight limits.
- 1.6** The current ORC Rating Systems shall apply to boats racing in the ORC class, except as noted in these sailing instructions (SIs).
- 1.7** The current IC37 Class Rules (IMIC37 CR) shall apply to all boats racing in the IC37 Class, except as noted in these SIs.
- 1.8** The current VX-One Class Rules shall apply to all boats racing in the VX-One Class, except as noted in these sailing instructions.
- 1.9** The current 12 Metre Class Rules shall apply to all boats racing the 12 Metre Class, except as noted in these sailing instructions.
- 1.10** The current 69F Class Rules shall apply to all boats racing the 69F Class, except as noted in these sailing instructions.

2 COMMUNICATIONS: NOTICES, ANNOUNCEMENTS, VHF CHANNELS

- 2.1 Notices, including race documents, results and amendments, shall be posted on the Official Notice Board. Protest Committee information, including protest time limits and hearing schedules, shall be posted on the Protest Committee Notice Board. Both boards are located in the courtyard of the NYYC Sailing Center at Harbour Court. This information may also be posted on the event website.
- 2.2 Any change to the sailing instructions will be posted before 0900 on the day it will take effect, except that any change to the schedule of races will be posted by 2000 on the day before it will take effect. Flag “Lima” will be flown to signify such posting.
- 2.3 In addition to the signals described in SI 3.3, the Race Committee will endeavor to announce the rendezvous locations as described in SI 6 at 0900 over VHF Channel 72. The failure to make this announcement or for a boat to hear this announcement will not be grounds for a boat to request for redress. This changes RRS 62.1(a).
- 2.4 After the rendezvous locations and any other regatta announcements have been made, Race Committee signal vessels will monitor and communicate with their respective classes on the circle VHF channels published in SI 2.5.
- 2.5 VHF Channels – The Race Committee VHF channels for each circle are shown below:
- a) Blue Circle VHF Channel 72
 - b) White Circle VHF Channel 69
 - c) Red Circle VHF Channel 1079 (79A)
 - d) Green Circle VHF Channel 71
- 2.6 Each boat shall carry a VHF radio capable of communicating with the Race Committee on their circle channel.

3 SIGNALS MADE ASHORE

- 3.1 Flag signals will be flown from the flagpole at Harbour Court.
- 3.2 When pennant “AP” is displayed ashore, “one minute” is replaced with “not less than one hour” in Race Signal “AP”.
- 3.3 Signals designating the rendezvous locations for all circles will be displayed at 0900 each day from the western yardarm of the flagpole at Harbour Court.

4 SCHEDULE OF RACES

- 4.1 The following schedule in 4.1 changes NOR 7.3.

<u>Date</u>	<u>Time</u>	<u>Event</u>
Tuesday, July 12	1600-1800	Registration – NYYC Sailing Center
Wednesday, July 13	0800-0900	Registration – NYYC Sailing Center
	1100	First Warning Signal
	1700-1900	Registration – NYYC Sailing Center
Thursday, July 14	1830	Rolex Welcome Reception
	0800-0900	Registration – NYYC Sailing Center
	1100	First Warning Signal
Friday, July 15	After Racing	Post-Race Social
	1100	First Warning Signal
Saturday, July 16	After Racing	Post-Race Social
	1100	First Warning Signal
	1800	Cocktails
	1900	Rolex Awards Dinner

- 4.2 The schedule for the 69F class will be provided separately.
- 4.3 No warning signal shall be made after 1500 on Saturday, July 16.

5 CLASSES, CIRCLE ASSIGNMENTS, CLASS FLAGS, SCRATCH SHEETS AND FORMAT

- a) **Classes:** The Organizing Authority will divide boats into classes. Each class will be given a numeral, alphabetic or class designation and be assigned each day to one of four circles (Blue, White, Green or Red). Note that a class may sail in different circles and be assigned different numeral designations on different days.

- 5.1 Format:** The Race Committee will notify competitors (no later than 1900 on the day before they will take effect) of the intended type of racing for the following day:
- Navigator Races – SI Addendum A (using government marks and racing marks on Narragansett Bay and/or Rhode Island Sound).
 - Drop Mark Races – SI Addendum B (using inflatable buoys on Rhode Island Sound and/or Narragansett Bay).
- 5.2 Scratch Sheets:** Scratch sheets will be posted on the Official Notice Board.
- 5.3 Class Flags:** Unless indicated on the scratch sheet, each boat shall display the numeric, alphabetic or class flag corresponding to her class designation, as shown on the scratch sheet, from her backstay approximately six feet above the deck from the warning signal for the first class on her circle until she is no longer racing. Boats without a permanent backstay shall conspicuously display these flags in an alternate position in the aft part of the boat.
- 5.4 Rolex Flags - Each yacht shall display the Rolex backstay flag provided at registration while racing. Boats without a permanent backstay shall conspicuously display this flag in an alternate position in the after part of the boat.**

6 RENDEZVOUS LOCATIONS

- 6.1** Circle rendezvous locations are listed below and will be designated as described in SI 3.3. See SI Addendum C – NYYC Primary Race Areas.

Rhode Island Sound:

- Area “A” -in the vicinity of 160° M for 1.2 NM from R “2” QR Whistle marking Brenton Point
- Area “B” -in the vicinity of 120° M for 2.5 NM from R “2” QR Whistle marking Brenton Point
- Area “C” -in the vicinity of 275° M for 3.0 NM from R “2” QR Whistle marking Brenton Point
- Area “D” -in the vicinity of 225° M for 2.0 NM from R “2” QR Whistle marking Brenton Point
- Area “E” -in the vicinity of 165° M for 5.0 NM from R “2” QR Whistle marking Brenton Point
- Area “F” -in the vicinity of 145° M for 3.5 NM from R “2” QR Whistle marking Brenton Point

Newport Harbor and near Newport Bridge:

- Area “K” -between Goat Island and Rose Island
- Area “M” -in the vicinity of R “12” west of Rose Island
- Area “O” -in the vicinity of Potter Cove (just north of west end of the Newport Pell Bridge)

North of Newport Bridge:

- Area “R” -in the vicinity of 200° for 0.5 NM from Halfway Rock
- Area “T” -in the vicinity of G “7” QG off Quonset Point
- Area “U” -in the vicinity of 035° M for 1.0 NM from Hope Island

- 6.2** Once on station, the Race Committee may announce the lat/long positions of the signal boat and starting mark over the circle VHF channel. Failure to make such an announcement, or the timing of any announcement, shall not be grounds for a boat to request redress. This changes RRS 62.1(a).

7 CHECK-IN AND RETIREMENT

- 7.1 Check in on Land:** Each boat shall check in at the NYYC Sailing Center at Harbour Court during the registration times so designated in the notice of race.
- 7.2 Check in on Water:** Prior to their course signal each day, each boat shall check in with the Race Committee signal vessel by sailing or motoring by the stern of the signal vessel and announcing her sail number.
- 7.3** Boats retiring shall inform the Race Committee on their circle VHF channel or by calling (401) 845-9633.

8 COURSES AND MARKS

The courses and marks for the 2022 Race Week at Newport presented by Rolex are described in the SI Appendices as shown:

Courses using Government Marks	SI Addendum A
Drop Mark Courses	SI Addendum B

9 THE START

- 9.1** A boat starting later than 10 minutes after her starting signal will be scored Did Not Start. This changes RRS A5.
- 9.2** The starting line will be between a staff displaying an orange flag on the Race Committee signal vessel and either a staff displaying an orange flag on the port-end Race Committee vessel or the course side of the port-end starting mark as described in the relevant SI Addendum.

- 9.3 Boats whose warning signal has not been made shall keep clear of the starting area from the time of the course signals for the first start in the sequence until the warning signal for their class.
- 9.4 The Race Committee will endeavor to hail boats observed to be OCS at the start over their respective circle VHF channel. Failure to hail, the timing or order of any such hails will not be grounds for a boat to request redress. This changes RRS 62.1(a).
- 10 CHANGE OF COURSE**
See Addendum B – Drop Mark Courses.
- 11 THE FINISH**
The finishing line will be between a staff displaying a blue flag on the Race Committee signal vessel and the course side of the finishing mark as described in the relevant SI Addendum.
- 12 PENALTY SYSTEM**
- 12.1 For all classes except the IC37 class, US Sailing Prescription Appendix V rule V1 shall apply. For all classes US Sailing Prescription Appendix V rule V2 shall also apply.
- 12.2 For the IC37 class the first sentence of RRS 44.1 is changed so that a boat may take a One-Turn Penalty when she may have broken one or more rules of Part 2 in an incident while *racing*.
- 12.3 The Protest Committee may impose suitable penalties, other than disqualification, for breaches of the World Sailing Offshore Special Regulations, other non-Part 2 rules or these SIs. This changes RRS 64.2.
- 12.4 A boat that has taken a penalty while racing shall complete an online penalty acknowledgement form no later than the end of protest time limit.
- 13 TIME LIMIT**
- 13.1 For courses designated in accordance with SI A2.4, SI A2.5 or SI A2.6, the time limit for the first boat to sail the course and *finish* is five hours. Boats failing to finish within 120 minutes after the first boat sails the course and finishes will be scored Time Limit Expired (TLE) and scored points as described in SI 15.3. This changes RRS 35, A4 and A5.
- 13.2 For courses designated in accordance with Addendum B, the time limit for the first boat to sail the course and finish is three hours. Boats failing to finish within 45 minutes after the first boat sails the course and finishes will be scored Time Limit Expired (TLE) and scored points as described in SI 15.3. This changes RRS 35, A4 and A5.
- 14 PROTESTS AND REQUESTS FOR REDRESS**
- 14.1 The intent to protest and the identity of the boat being protested shall be communicated to the Race Committee at the first reasonable opportunity after the boat intending to protest finishes until acknowledged by the Race Committee. This changes RRS 61.1(a).
- 14.2 Written protests or requests for redress shall be submitted through the online hearing request form as soon as possible, but not later than one hour after the Race Committee signal vessel for that circle has docked. The time limit for filing a request for hearing will be posted on the Official Notice Board.
- 14.3 Protests will be heard as soon as possible. The Protest Committee will attempt to hear protests in the order of receipt.
- 14.4 Breaches of SIs 7, 9.3, 9.4 and 18 will not be grounds for a protest by a boat. This changes RRS 60.1(a).
- 14.5 The penalty for a breach of SI 9.3 or 9.4 shall be a minimum of two points. This changes RRS 64.2.
- 15 SCORING**
- 15.1 A boat's series score will be the total of her race scores. This changes RRS A2 and IMIC37 CR H3.1.
- 15.2 One race is required to be completed to constitute a series.
- 15.3 Boats that have started and fail to finish within the finish windows listed in SI 13 for any reason, shall, without a hearing, be scored Time Limited Expired (TLE) by the Race Committee and be assigned points equal to the number of boats in her class that have sailed the course and finished within the time limit, plus two. This changes RRS A4 and A5.
- 15.4 Teams competing for the Race Week Team Trophy will be scored in accordance with the notice of race.

- 15.5** For scoring purposes, the distance used (as needed) will be that as calculated by the Race Committee.
15.6 ORC Classes: The decision on wind ranges and course classification (WL or All Purpose) will be at the sole discretion of the Race Committee and shall not be grounds for a request for redress by a boat. This changes RRS 62.1(a).

16 PRIZES

- 16.1** Prizes will be awarded as described in the notice of race.
16.2 Additional prizes may be awarded at the discretion of the OA.

17 WAIVER AND RELEASE OF LIABILITY

- 17.1** Competitors participate in the regatta entirely at their own risk. See RRS 3, Decision to Race. The Organizing Authority, New York Yacht Club, and any official sponsors will not accept any liability for material damage or personal injury or death sustained in conjunction with or prior to, during or after the regatta. Attention is also drawn to RRS 46 and USSER 1.2, Responsibility.
17.2 As a condition of entry, each owner, skipper and individual participating crew member shall submit an online Waiver and Release of Liability form. The fully executed Waiver and Release of Liability form shall be submitted prior to racing. The waiver form link can be found on the 2022 Race Week at Newport presented by Rolex website.
17.3 Boats shall not be scored unless the skipper/person-in-charge has submitted a Waiver and Release of Liability form.

18 SAFETY REGULATION

- 18.1** Restricted Channels: Competitors are reminded that Narragansett Bay and its approaches are considered restricted channels for commercial traffic and other vessels restricted in their ability to maneuver. Boats must comply with the government right-of-way rules when in proximity to commercial or privileged marine traffic.
18.2 Newport Security Zone: In the event there is racing in Narragansett Bay, competitors should be aware of heightened security around the Navy base in Newport just to the north of the Newport Pell Bridge. The area may be defined by a series of white buoys marking the Newport Security Zone along the coast of the Naval Facilities from Coasters Harbor to the breakwater at the north end of Coddington Cove and the line defined by the buoys is designated as an obstruction. Boats shall not enter this area. A Navy patrol vessel monitors the area and boats navigating in the Exclusionary Zone may face action by Coast Guard and Naval authorities.
18.3 Additional Restricted Areas: There may be additional restricted areas due to Navy activity, shipping or fishing operations may be described in an amendment to the sailing instructions.

19 NOTES

- 19.1** The 2022 Race Week at Newport presented by Rolex website can be found at <https://nyyc.org/2022-race-week>. For further information please contact:
New York Yacht Club, Harbour Court
5 Halidon Avenue
Newport, RI 02840
Tel: 401-845-9633
Fax: 401-846-3303
Email: sailingoffice@nyyc.org

RACE COMMITTEE

Forrest Williams, PRO
Peter Gerard, RO
Ellen Pesch, RO
Ray Wulff, RO
Ace Bailey
Robbie Benjamin, DRO
David Bush-Brown
Pat Dawson
Rowena Dery
Tim Dolman
David Elwell
Eric Feigel
Ingrid Flynn
Tom Flynn
Dan Gordillo
Dick Gumpert
Katrina Hele

Peter Hoffman
Stephen Jeffries, DRO
Joey Moffitt
Jim Mullen
Pam Murrin
Ellyn Osmond
John Osmond
Cathy Peacock
Shelley Peters
Steve Prime
Michael Shea
Jim Chriner
Ellen Sykes
Allegra Torrey
John Vincze
Alyce Wright

PROTEST COMMITTEE

Patty O'Donnell, Chief Judge
Carol Barrow
David Bush-Brown
Greg Kiely
Timmy Larr
John Mooney

SAILING INSTRUCTIONS

ADDENDUM A – COURSES USING GOVERNMENT MARKS

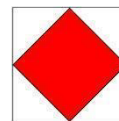
A1 ORDER OF START

The intended order of start will be announced at course signals on the circle VHF channel. Classes may or may not start in numerical order. The Race Committee may combine two or more classes into one start by displaying multiple class flags at the warning signal. The Race Committee will endeavor to announce the next class(es) to start on the circle VHF channel.

A2 COURSES

- A3.1** All boats shall pass through the center span only for any course passing under the Jamestown Verrazano Bridge and/or the Newport Pell Bridge, in which case the center span bridge piers define a gate mark.
- A2.2** Government marks shall have no required side except when designated as a mark of the course.
- A2.3** No later than the warning signal, the Race Committee will display on a board the course to be sailed. The Race Committee will endeavor to announce the designated courses over the circle VHF channel. Failure to make such an announcement shall not be grounds for a boat to request redress. This changes RRS 62.1(a).
- A2.4 COURSE 1** – If number one is displayed, the course will be clockwise around Conanicut Island:
- Special Mark “E”, if used (see SI A3.6)
 - GR “NR” Bell 650 yards SW of Beavertail Point to starboard
 - The center span of the Jamestown Verrazano Bridge
 - G “5” 1,250 yards NW of Conanicut Point to starboard
 - R “2” Fl R 4 Sec Bell 900 yards NE of Conanicut Point to starboard
 - The center span of the Newport Pell Bridge
 - Pass to the west of R “12” off Rose Island
 - Finish off Fort Adams between a staff displaying a blue flag on a Race Committee vessel and the finishing mark. The finishing line will be located approximately 0.65 NM north of the Fl R 6 sec Horn “2” on the northern point of Fort Adams.
- A2.5 COURSE 2** – If number two is displayed, the course will be counter-clockwise around Conanicut Island:
- Special Mark “E”, if used (see SI A3.6)
 - Pass to the west of R “12” off Rose Island
 - The center span of the Newport Pell Bridge
 - R “2” Fl R 4 Sec Bell 900 yards NE of Conanicut Point to port
 - G “5” 1,250 yards NW of Conanicut Point to port
 - The center span of the Jamestown Verrazano Bridge
 - GR “NR” Bell 650 yards SW of Beavertail Point to port
 - Finish off Fort Adams between a staff displaying a blue flag on a Race Committee vessel and the finishing mark. The finishing line will be located approximately 0.65 NM north of the Fl R 6 sec Horn “2” on the northern point of Fort Adams.
- A2.6 COURSE 3** – If number three is displayed, the course will be designated using buoys as described in SI Addendum A3. The Race Committee will list the marks in the order to be rounded and the required side to leave each mark. The course will be:
- Start;
 - Round the marks in the designated order leaving each mark on the designated side;
 - Finish between a staff displaying the blue flag on the Race Committee vessel and the nearby finishing mark. Note that the intended finishing line will be set at the starting location of the Race Committee signal vessel.
- A2.7** The Race Committee vessel at the finish may or may not be the same vessel that started the race.

- A2.8** If at the start, Flag “F” is displayed on a separate pole, the finishing line will be between a staff displaying a blue flag on a Race Committee vessel and the nearby finishing mark in the vicinity of 0.65 NM at a bearing of 355° from the Fl R 6 sec Horn “2” on the northern point of Fort Adams. In the absence of the Race Committee vessel and/or finishing mark, the finishing line will be on a bearing of 120° M from G “3” Gong southeast of Rose Island.



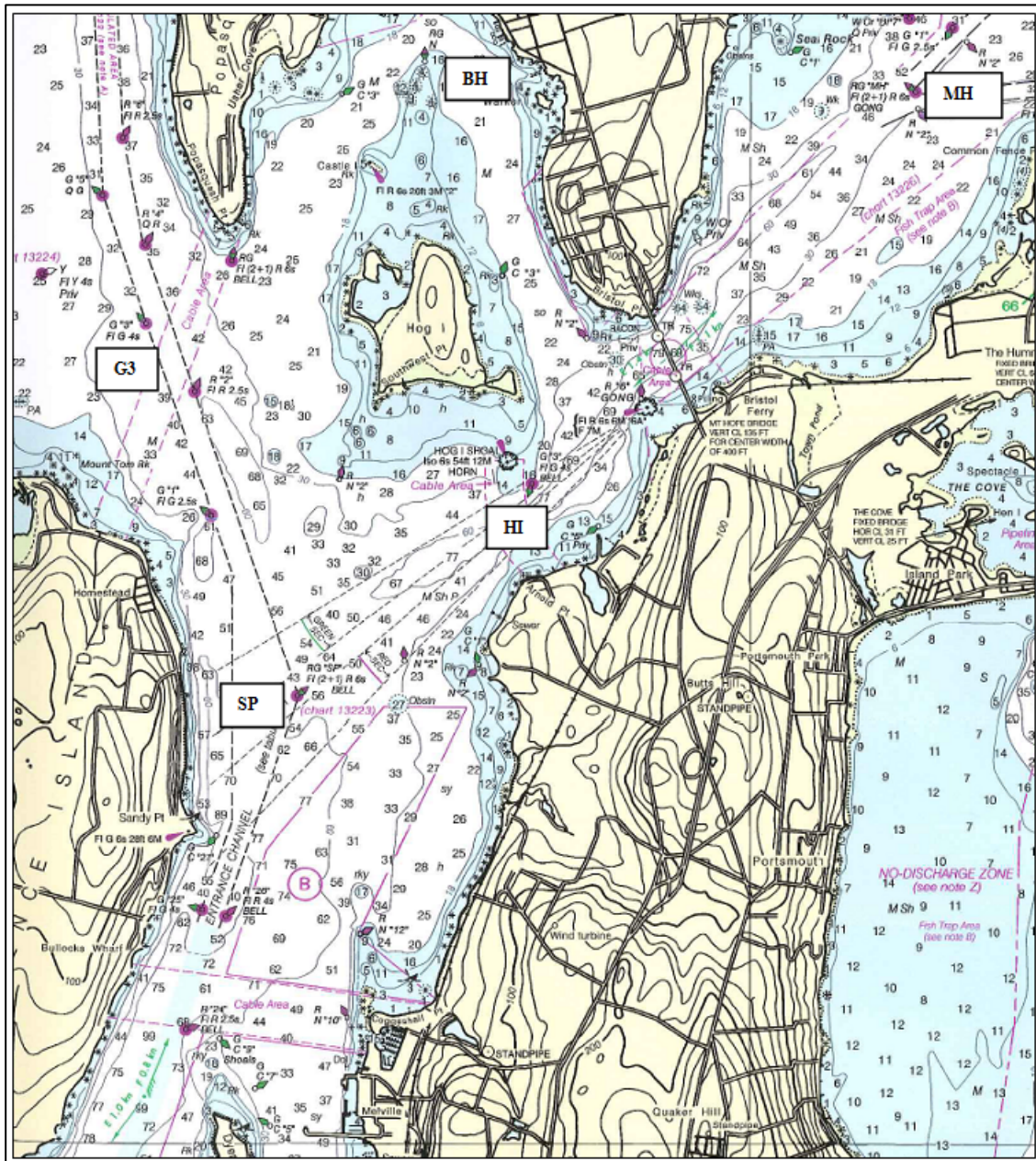
A3 MARKS

- A3.1** The starting mark will be a green tetrahedron buoy.
- A3.2** The finishing mark will be a pink tetrahedron buoy.
- A3.3** Special Marks “E” and “L”, if used, will be the same as the original mark colors for each circle as described in SI B2.1.
- A3.4** If used, Special NYYC Temporary Inflatable Race Marks 16, 17, O2 and N2, as designated on the current South Bay Race Chart, will be orange tetrahedron buoys.
- A3.5** All buoys listed on the current *South Bay Race Chart* provided at registration may be used in Course 3. In addition, the marks listed in SI Addendum A3.8 below are additional rounding marks that might be used.
- A3.6** **Special Mark “E”**
- The Race Committee may add a new first mark “E” to any course described in SI Addendum A2.
 - If special mark “E” is used for Course 1 or Course 2, the Race Committee will display on a board the letter “E” next to the letter “S” (round special mark “E” to STARBOARD) or next to the letter “P” (round special mark “E” to PORT).
 - In Course 3, the Race Committee will list “E” along with the designated rounding side as the first mark on the course board as described in SI A2.6.
 - The magnetic bearing and distance (in nautical miles to the nearest tenth) to special mark “E” will be posted on a board on the Race Committee signal vessel.
- A3.7** **Special Mark “L”**
- The Race Committee may set special mark “L” approximately 0.1 NM to windward of the start line.
 - If special mark “L” is used, it will be listed as a mark as described in SI Addendum A2.6.

A3.8 GOVERNMENT MARKS AND ISLANDS

See charts 13205, 13218, 13223, 13226 and 13224 for more detail.

<u>Description</u>	<u>Approx. location</u>
1 Gould Island	41° 32.00' N; 071° 20.67' W (center of island)
3 Hope I (east of Quonset) including R “2” at the southwest end and G C “1” at the northeast end	
4 Conanicut Island	
5 RW “NB” Mo(A) WHIS	41° 23.00' N; 071° 23.36' W
7 R “2” Fl R 4s WHIS south of Point Judith	41° 18.46' N; 071° 28.35' W
1BI G “1 BI” Fl G 4s BELL north of Block I	41° 15.49' N; 071° 34.55' W
M Block Island including:	
R “4” Fl R 6s WHIS off Southwest Pt	41° 08.73' N; 071° 37.35' W
Black Rock Pt. Buoy 2	41° 08.42' N; 071° 35.74' W
U Buzzards Light Tower Fl 2.5s 67ft 17M Horn	41° 23.82' N, 071° 02.08' W
PR Prudence Island including R “8” northwest of Patience Island and RG N at the northern end	
SP RG “SP” Fl (2+1) R 6s BELL	41° 36.92' N; 071° 17.59' W
G3 G “3” Fl G 4s (approx. 0.5 NM sw of Popasquash Neck)	41° 38.53' N; 071° 18.46' W
MH RGR “MH” Fl (2 +1) R 6s GONG in Mt. Hope Bay	41° 39.54' N; 071° 14.04' W
BH RGR N "Middle Ground Buoy" approx. 0.8 NM n of Hog I	41° 39.68' N; 071° 16.87' W
HI G “3” Fl G 4s BELL approx. 0.4 NM south southeast of Hog I	41° 37.79' N; 071° 16.29' W
DI Dutch Island	41° 30.19' N; 071° 24.04' W (center of island)



Marks near Prudence Island, Bristol and Mt. Hope Bay

SAILING INSTRUCTIONS

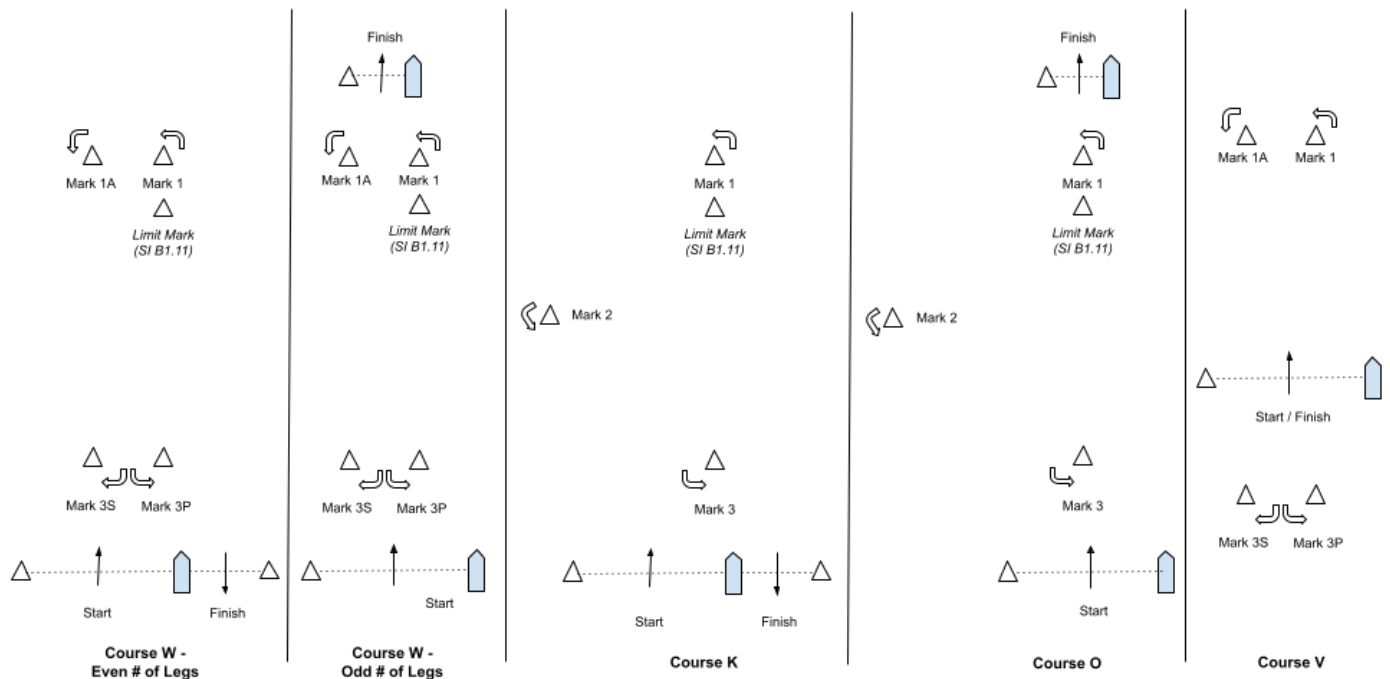
ADDENDUM B – DROP MARK RACES

B1 COURSES FOR DROP MARK RACES

B1.1 The Race Committee signal vessel will signal the course on a course board. Course designations are as follows:

- W2 Start – 1 – 1A – Finish (downwind)
- W3 Start – 1 – 1A – Gate (3S/3P) – Finish (upwind)
- W4 Start – 1 – 1A – Gate (3S/3P) – 1 – 1A – Finish (downwind)
- W5 Start – 1 – 1A – Gate (3S/3P) – 1 – 1A – Gate (3S/3P) – Finish (upwind)
- W6 Start – 1 – 1A – Gate (3S/3P) – 1 – 1A – Gate (3S/3P) – 1 – 1A – Finish (downwind)
- K Start – 1 – 2 – 3 – 1 – Finish (downwind)
- O Start – 1 – 2 – 3 – 1 – 3 – Finish (upwind)
- V Start – 1 – 1A – Gate (3S/3P) – 1 – 1A – Gate (3S/3P) – Finish (upwind)

B1.2 Course Diagrams:



B1.3 Course “W” is a Windward/Leeward course with a windward offset mark. A board indicating the number of LEGS to be raced will be shown next to the letter “W”. The distance between the windward mark and the offset mark shall not count as a leg for the purposes of indicating the number of legs.

B1.4 Course “O” is a Triangle/Windward/Leeward/Windward course.

B1.5 Course “K” is a Triangle/Windward/Leeward course.

B1.6 Course “V” is a Windward/Leeward course with a windward offset mark and a start/finish line in the middle.

B1.7 The leeward mark for Courses “W”, “O” and “K” will be an inflatable mark(s) set approximately 0.10 NM to windward of the starting line. A gate mark 3S/3P may be used for Course “W”.

B1.8 The leeward mark for Course “V” will be inflatable marks set to leeward of the starting line. A gate mark 3S/3P may be used for Course “V”.

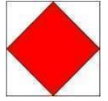
B1.7 The course designations, distance and bearing to the windward mark will be displayed on a board.

B1.8 Marks, including the windward offset mark, shall be rounded in order and always left to port, except that a gate, when used, shall be rounded as described in Definitions, *Sail the Course*. In the event a gate is not set, the single leeward mark shall be rounded to port.

B1.9 There will be a windward offset mark adjacent to the windward mark for courses W2, W3, W4, W5, W6 and V.

B1.10 Special Finish Mark “F”

If flag “F” is displayed on a separate pole, the finishing line for that class will be between a staff displaying a blue flag on a Race Committee boat and the nearby finishing mark in the vicinity of 0.65 NM at a bearing of 355° from the Fl R 6 sec Horn “2” on the northern point of Fort Adams. In the absence of the Race Committee boat and/or finishing mark, the finishing line will be on a bearing of 120° from G “3” Gong southeast of Rose Island. This changes SI Addendum B1.1.



B1.11 Limit Mark

- a) The Race Committee may set a pink inflatable limit mark approximately 6-8 boat lengths to leeward of the windward mark.
- b) The limit mark shall be left to port on both the upwind and the downwind legs.
- c) In the event of a change of course to the windward mark after the first windward mark rounding in that race, the limit mark will not be set.
- d) The location of the limit mark or the failure of the Race Committee to set the limit mark shall not be grounds for a boat to request redress. This changes RRS 62.1(a).
- e) The Race Committee will display flag “Third Substitute” if the limit mark is a mark of the course.



B1.12 Long Windward Mark:

For all “W” courses, the Race Committee may set both a long windward mark and offset, and a short windward mark and offset. The distance to the long windward mark and the distance to the short windward mark will be displayed on a course board. If flag “D” is displayed on a separate pole, that class will use the long windward mark for each weather leg in that race. If flag “D” is not displayed, that class will use the short windward mark for each weather leg in that race.



B2 MARKS FOR DROP MARK COURSES

B2.1 Marks will be inflatable buoys as follows:

<u>Circle</u>	<u>Original marks</u>	<u>Starting</u>	<u>Finishing</u>	<u>Change marks</u>
WHITE	Yellow	Green	Pink	Orange
BLUE	Yellow	Green	Pink	Orange
RED	TBD	TBD	TBD	TBD
GREEN	Yellow	Green	Pink	Orange

B2.2 The finish mark for Course “V” will be the same color as the start mark.

B3 COURSE CHANGE

B3.1 To change the next leg of the course, the Race Committee will lay a new mark (or move the finishing line) and remove the original mark as soon as practicable. When in a subsequent change a new mark is replaced, it will be replaced by an original mark.

B3.2 The Race Committee may change the course by up to five degrees in bearing and/or 0.2 NM in length without a signal or change of mark color. This changes RRS 33.

B3.2 In addition to the requirements in RRS 33, the Race Committee will attempt to announce any course change on the respective circle VHF channel. Failure to make such an announcement shall not be grounds for a boat to request redress. This changes RRS 62.1(a).

B4 THE FINISH

B4.1 The finishing line will be between a staff displaying a blue flag on a Race Committee vessel and the nearby finishing mark.

- a) For Course “W” with an odd number of legs and Course “O”, the finish line will be located approximately 0.1 NM to windward of the windward mark.
 - i) On a “W” course with an odd number of legs that has a long windward mark in use, the finish line will be to windward of the long windward mark.
- b) For Course “W” with an even number of legs and Course “K”, the finish line will be located approximately 0.1 NM to leeward of the leeward mark or gate and the finishing mark will be on the opposite side of the Race Committee signal vessel from the starting mark. See diagrams in SI Addendum B1.2.

B4.2 The Race Committee vessel at the finish may or may not be the same vessel that started the race.

SAILING INSTRUCTIONS
ADDENDUM C – NYYC PRIMARY RACE AREAS

