



2022 Leukemia Cup - Commodore's Cup

Macatawa Bay Yacht Club
Macatawa, MI

Sailing Instructions

1 RULES

- 1.1 RRS Appendix T – Arbitration will apply.
- 1.2 RRS Appendix V – Alternative Penalties will apply for all boats.
- 1.3 US Sailing Prescription to RSS 63.2 will not apply.
- 1.4 If there is a conflict between the NOR and the SI, the SI shall prevail. This changes RRS 63.7.

2 NOTICES TO COMPETITORS - Notices will be posted on Yachtscoring.com and the Notice Board located on the wall adjacent to the MBYC Dockmaster's office in the Junior Sailing Center.

3 CHANGES TO SAILING INSTRUCTIONS

- 3.1 Any changes in the Sailing Instructions will be posted before 1000 hours on the day they will take effect, except that any change in the schedule will be posted before 2100 hours on the day before it will take effect.
- 3.2 The Race Committee may modify the Sailing Instructions on the racecourse by a broadcast over VHF radio channel 72.

4 COURTESY BROADCASTS

- 4.1 VHF channel 72 will be the designated hailing channel for all courtesy broadcasts.
- 4.2 A boat shall not request redress for errors or omissions in courtesy broadcasts. This changes RRS 62.1(a).
- 4.3 Boats shall monitor the designated hailing channel at all times from 30 minutes before the warning signal until 30 minutes after finishing.
- 4.4 Except in an emergency, a boat that is racing shall not make voice or data transmissions and shall not receive voice or data communication that is not available to all boats.

5 SIGNALS MADE ASHORE

- 5.1 Signals made ashore will be displayed upon the flag pole located on the north side of the MBYC clubhouse or on the Race Committee ("RC") boat if tied to the dock or seawall.
- 5.2 When flag AP is displayed ashore "1 minute" is replaced with "not less than 60 minutes" in race signal AP.

6 CLASS FLAGS - ORDER OF START

- 6.1 The intended start order for the first race will be announced at the skipper's meeting and broadcast on the hailing channel before the first warning of the day.
- 6.2 Section flags: VX – VXOne class flag; 7.9 - 7.9 class Flag; PHRF 1 - Numeral Pennant 1; PHRF 2 - Numeral Pennant 2; JAM – Numeral Pennant 3
- 6.3 After the first race has been completed, the Order of Start may be changed based upon conditions and Race Committee judgment. Changes will be posted on the display board on the Race Committee Boat and will also be announced in a courtesy broadcast. Competitors are responsible for monitoring the class flags displayed during each starting sequence.

7 THE COURSES

- 7.1 Courses will be Windward / Leeward: 4 legs will be sailed with marks to be left to port.



2022 Leukemia Cup - Commodore's Cup

7.2 RC may elect to set a 3-leg triangle course for the JAM section.

7.3 No later than the warning signal, the race committee signal boat will display on course boards:

- the approximate compass bearing to Mark 1
- the distance to Long Mark 1
- the distance to Short Mark 1
- the course assignment for each class

7.4 The leeward mark is not a mark of the course for the first leg or a final downwind leg

8 MARKS

8.1 Marks shall be orange tetrahedrons or cylinders. In the event of a course change, the new mark shall be yellow. Subsequent change marks will be replaced by the original mark.

9 THE START

9.1 Races will be started by using rule 26.

9.2 The starting line will be between a staff displaying an orange flag on the RC signal boat at the starboard end and the adjacent mark at the port end.

9.3 A boat starting later than 10 minutes after her starting signal will be scored Did Not Start. This changes rule A4.

9.4 The Race Committee shall attempt a courtesy broadcast of the sail numbers of any OCS boats on channel 72. Failure to make a broadcast or timely order of broadcast will not be grounds for redress. This changes rule 62.1.

9.5 Change of First Mark Between Starts - When signal flag C is displayed on the signal boat before the warning signal mark 1 will be a new mark as defined in instruction 9 and revised bearing and distances will be displayed. When in a subsequent change a new mark is replaced, it will be replaced by an original mark.

10 THE FINISH

10.1 For Course 1, the finishing line will be between a staff displaying an orange flag on the RC signal boat at the starboard end and the orange start mark at the port end. For Course 2 and T, the finishing line will be between a staff displaying a blue flag on the RC signal boat at the starboard end and WHITE mark on the port end.

10.2 The Race Committee may give the last boat in fleets racing one-design its place prior to the finish.

11 TIME LIMIT

11.1 The time limit for races shall be 90 minutes for the first boat to finish. Boats finishing 30 minutes after the first boat that sails the course finishes will be scored DNF. This changes RRS 35.

12 WITHDRAWAL

12.1 A boat that retires from a race, shall notify the Race Committee before leaving the racecourse area or if that is impossible, immediately after arriving at the shore.

13 PROTESTS

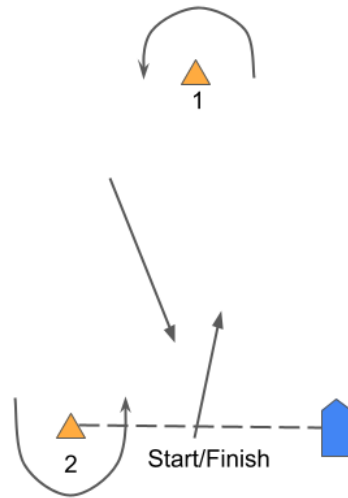
13.1 Protests shall be delivered to the Race Committee within 45 minutes after the RC signal boat docks. The protest time limit and a list of protests received will be posted on the Notice Board. Hearings will be held as soon as possible after racing each day. Protest forms are available at the Club Office and/or the signal boat.

2022 Leukemia Cup - Commodore's Cup

Addendum A - Course Diagrams

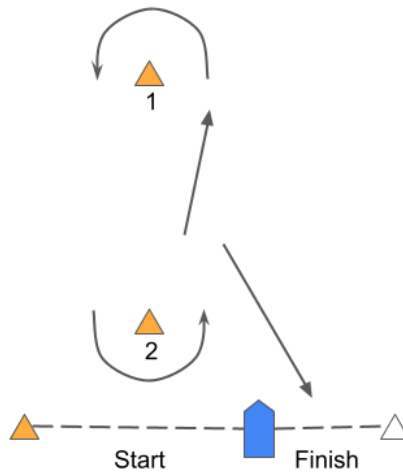
Course Diagram: Course 1: Windward/Leeward - 4 legs

Start-1-2-1-Finish



Course Diagram: Course 2: Windward/Leeward - 4 legs

Start-1-2-1-Finish



2022 Leukemia Cup - Commodore's Cup

Addendum A - Course Diagrams

Course Diagram: Course T: Triangle - 3 legs

Start-1-G-Finish

