

2022 Viper 640
Women's Atlantic Coast Championship
Organizing Authority: Noroton Yacht Club (OA)
June 25-26, 2022
Darien, Connecticut, USA

Sailing Instructions (SIs)

The notation '[DP]' in a rule in the notice of race (NoR) or sailing instructions (SIs) means that the penalty for a breach of that rule may, at the discretion of the protest committee, be less than disqualification. The notation '[NP]' in a rule of the NoR or SIs means that a boat may not protest another boat for breaking that rule. This changes RRS 60.1(a). All times are US Eastern Daylight time. VICA shall mean the Viper 640 International Class Association.

1 RULES

- 1.1 The event is governed by the rules as defined in *The Racing Rules of Sailing*.
- 1.2 Rule Changes and the US Sailing Prescriptions that apply are stated in SIs Appendix A.

2 CHANGES TO SAILING INSTRUCTIONS

- 2.1 Any change to the sailing instructions will be posted no later than 2 hours before the scheduled warning signal for the first race on the day it will take effect, except that any change to the schedule of races will be posted by 2100 on the day before it will take effect.

3 COMMUNICATIONS WITH COMPETITORS

- 3.1 Notices to competitors will be posted on the official notice board which is online and located at <https://yachtscoring.com/emenu.cfm?eID=15059>
- 3.2 The race office is located in the Regatta Room at Noroton Yacht Club. The protest room is in the Junior Sailing office.
- 3.3 On the water, **the race committee intends to monitor and communicate with competitors on VHF radio channel 73**. Noroton Yacht Club Dock house monitors VHF channel 72 for launch services and other communications.
- 3.4 All boats shall comply with VICA class rule 9.1 (e) and carry a VHF radio capable of communicating on standard US VHF channels.
- 3.5 [DP] While racing, except in an emergency, a boat shall not make voice or data transmissions and shall not receive voice or data communication that is not available to all boats.

4 CODE OF CONDUCT

- 4.1 [DP] Competitors and support persons shall comply with reasonable requests from race officials.

5 SIGNALS MADE ASHORE

- 5.1 Signals made ashore will be displayed from the flagpole on the Club Terrace.
- 5.2 When flag AP is displayed ashore with 2 sounds, '1 minute' is replaced with 'not less than 60 minutes' in Race Signals AP.

5.3 When flag AP over H is displayed ashore, boats must return to the docks and may not leave the dock until the H flag is lowered.

6 SCHEDULE

6.1 Schedule of Registration and Racing

Friday, June 24	1700-1900	Registration desk open
Saturday June 25	0830- 0930	Registration by appointment. Call (203) 803-0381 at least 24 hours ahead.
	0930	Skippers Meeting and Sustainability Briefing
	1130	First Warning Vipers
Sunday June 26	1000	First Warning Vipers
	1345	The Sonar Class may be given a separate start by the RC using the same start line from 1345 onwards (see Appendix C)
	1600	No Warning after this time

6.2 The time of the final warning signal of the day on Saturday shall be at the discretion of the Race Committee

6.3 The Race Committee is aiming for a total of 4-8 races, dependent on weather conditions and judgement of the race committee. The number of races run by the Race Committee shall not constitute an action or omission as a basis for a boat to request redress. This changes RRS 62.1(a)

7 CLASS FLAGS

7.1 The class flag is the Viper class symbol against a white background.

8 RACING AREA

8.1 The racing area will be approximately 1 to 2 miles SE to SW of G "1" at the mouth of Darien Harbor.

9 COURSES

9.1 SI Appendix B, Attachment 1 shows the courses, including the approximate angles between legs, the order in which marks are to be passed, and the side on which each mark is to be left.

9.2 No later than the warning signal, the race committee signal vessel will display the course and approximate compass bearing of the first leg.

9.3 The Leeward Gate marks (2S and 2P) can be replaced by a single leeward mark (Mark 2P) which shall be rounded to port.

10 MARKS

10.1 The starting marks will be race committee vessel(s) or an orange tetrahedron.

10.2 The finishing marks will be race committee vessel(s) or a yellow cylinder.

10.3 Marks 1 will be an orange tetrahedron. Mark 1 a (the offset) will be a yellow cylinder. Marks 2S and 2P will be green tetrahedrons

10.4 New marks, as provided in SI 12, will be as follows: Mark 1: Yellow tetrahedron. Mark 1a: Yellow Cylinder Mark 2P and 2S: Orange Tetrahedrons

11 THE START

11.1 Races will be started using RRS 26.

11.2 The starting line is between a staff displaying an orange flag on the race committee signal vessel and either the course side of the pin-end starting mark or a staff displaying an orange flag on race committee vessel at the other end of the finishing line.

11.3 If any part of a boat's hull is on the course side of the starting line at her starting signal and she is identified, the race committee will attempt to hail her sail number. Boats may not base a request for redress on the failure to hail her number, failure of her to hear such a hail, or the order in which boats are hailed. This changes RRS 62.1(a).

11.4 A boat that does not start within 10 minutes after her starting signal will be scored Did Not Start without a hearing. This changes RRS A5.1 and A5.2.

12 CHANGE OF THE NEXT LEG OF THE COURSE

12.1 To change the next leg of the course, the race committee will lay a new mark (or move the finishing line) and remove the original mark as soon as practicable.

12.2 New marks set after a CHANGE OF COURSE are described in 10.4

12.3 If the windward course to mark 1 is changed, the Race Committee may determine to place a new offset mark (1a) or not to place a new offset mark. In the absence of a new offset mark, competitors shall sail directly from mark 1 to marks 2 or the finish consistent with the next leg of the course.

12.4 When in a subsequent change a new mark is replaced, it will be replaced by an original mark.

13 THE FINISH

13.1 The finishing line is between a staff displaying a blue flag on the race committee vessel and either the course side of the finishing mark or a staff displaying a blue flag on race committee vessel at the other end of the finishing line.

14 PENALTY SYSTEM

14.1 US Sailing Prescription Appendix V, Alternative Penalties, will apply (see SIs Appendix A).

15 TIME LIMITS [AND TARGET TIMES]

15.1 The time limit for a race (see RRS 35) will be 75 minutes.

15.2 If no boat has passed Mark 1 within 45 minutes, the race will be abandoned. The Race Committee may abandon the race in accordance with Rule 32.1 sooner than 45 minutes after the start.

15.2 The finishing window shall be 15 minutes. The finishing window is the time for boats to finish after the first boat sails the course and finishes. Boats failing to finish within the finishing window, and not subsequently retiring, penalized, or given redress, will be scored Time Limit Expired (TLE) without a hearing. A boat scored TLE shall be scored points for the finishing place two more than the points scored by the last boat that finished within the finishing window, but no worse than points scored for finishing last based on the number of boats that started the race. This changes RRS 35, A5.1, A5.2 and A10.

15.3 Failure to meet the Time Limit or Finishing Window will not be grounds for a boat to request redress. This changes RRS 62.1(a)

16 HEARING REQUESTS

16.1 The protest time limit is 60 minutes after the race committee signal vessel docks. The time will be posted on the official notice board.

16.2 Hearing Request, scoring inquiry, and penalty acceptance forms are available on the [online notice board](#) (see "General Race Forms").

16.3 Hearing Requests shall be delivered to the race office in person by the protest time limit.

16.4 When the race committee receives a scoring inquiry form, it will review its records and respond as soon as practicable.

16.5 Notices will be posted no later than 30 minutes after the protest time limit to inform competitors of location and schedule of hearings in which they are parties or named as witnesses.

16.6 The race committee will post a list of race committee scoring actions no later than the protest time limit.

16.7 The protest committee may impose penalties less than disqualification, for a violation of the class rules and racing rules other than those of RRS Part 1 and Part 2.

16.8 A boat that wishes to lodge a protest or file a request for redress for an incident during a race shall inform the Race Committee as soon as reasonably possible after the last boat has completed that race, either on channel 73 or by hailing the Race Committee boat and receiving an acknowledgement.

17 SCORING

17.1 RRS A5.3 will apply.

17.2 One race is required to be completed to constitute a series.

17.3 When fewer than six races have been completed, a boat's series score will be the total of her race scores. When six or more races have been completed, a boat's series score will be the total of her race scores excluding her worst score.

18 SAFETY REGULATIONS and CHECKING IN

18.1 Before the warning signal of the first race each day, each boat shall sail on starboard tack past the stern of the Race Committee Signal boat and hail her sail number and the number of persons on board. The hail may be made on VHF.

18.1 [DP] A boat that retires from a race shall notify the race committee at the first reasonable opportunity on channel 73.

19 REPLACEMENT OF CREW OR EQUIPMENT

19.1 [DP] Substitution of competitors is not allowed without prior written approval of the Event Chairperson or his designee.

19.2 [DP] Substitution of damaged or lost equipment shall comply with VICA Class Rules.

20 EQUIPMENT AND MEASUREMENT CHECKS

20.1 A boat or equipment may be inspected at any time for compliance with the class rules, notice of race and sailing instructions.

20.2 [DP] When instructed by a race official on the water, a boat shall proceed to a designated area for inspection

20.3 The Event Chair is the designated representative of the Viper 640 North American Executive Committee and the VICA Technical Committee

21 SUPPORT VESSELS

14.1. All support person vessels shall register with the race office.

14.2 Support vessels shall carry a VHF radio, monitor Race Committee communications, and, if called upon, be available for safety assistance or assist towing competitors.

14.3 On race days, private support vessels may not communicate any information to competitor boats that could affect performance or racing, from the moment the team leaves the dock or mooring until the end of racing for the day. See VICA rule 10.3 (a).

14.4 On race days, support boats may not tow competitors to the racecourse without express permission from the Race Committee. Support boats offering to tow a boat must monitor the

designated race channel and comply with any instructions from the Race Committee to tow multiple boats.

14.5 Support vessels may not provide provisions or equipment to competitors without express permission from the Race Committee.

14.7 In accordance with VICA rule 10.3 (b) , a Viper Class Coach boat (VCCB) may provide on the water coaching to competitors. The VCCB shall carry a Viper Class flag and comply with the requirements of rule 10.3 (b). Any competitor may seek help or advice from the VCCB and such help or advice shall not be considered as “prohibited outside help” under rule 41. Any advice given by the VCCB shall not constitute a cause for a boat to request redress. This changes Rule 41 and Rule 62.1 (a)

22 SUSTAINABILITY

22.1 (DP) Single Use Plastic bottles are banned on Noroton Yacht Club Grounds, and aboard Competitor boats for the duration of the event starting from 12.00 noon on Friday 24th February until 9.00pm Sunday 25th February

22.2 Water bottles may be refilled at a filtered refilling station on the East wall of the clubhouse adjacent to the Junior sailing room

22.3 (DP) Recyclable waste should be placed in the clearly marked receptacles

22.4 The penalty for a breach of Rule 47 may include disqualification

23 LAUNCHING, BERTHING AND HAUL OUT

23.1 [NP] Boats shall be launched 10. 30 am on Saturday June 25th unless the Event Chair posts a delay on the Event Notice Board.

23.2 [DP] Boats shall not be hauled out during the event except with and according to the terms of prior written permission of the Event Chair. In the event of a forecast of bad weather, the Event Chair may announce that boats may be hauled out and post that announcement on the Event Notice Board.

23.3 [NP] Boats shall be assigned a berthing area between docks or on a mooring by the NYC facility staff.

23.4 NP) During haul out on Sunday priority may be given to boats that have the furthest to travel

24 PRIZES

24.1 Perpetual Trophies will be awarded to the first-place team overall and the first All-Women team. Further prizes will be awarded in accordance with the NoR. Additional prizes may be awarded at the discretion of the organizing authority.

25 RISK STATEMENT

25.1 RRS 3 states: ‘The responsibility for a boat’s decision to participate in a race or to continue to race is hers alone.’ By participating in this event each competitor agrees and acknowledges that sailing is a potentially dangerous activity with inherent risks. These risks include strong winds and rough seas, sudden changes in weather, failure of equipment, boat handling errors, poor seamanship by other boats, loss of balance on an unstable platform and fatigue resulting in increased risk of injury. Inherent in the sport of sailing is the risk of permanent, catastrophic injury or death by drowning, trauma, hypothermia, or other causes.

Appendix A

The following Rule Changes and US Sailing Prescriptions Apply:

US Sailing Prescription Appendix V applies

V1 PENALTY AT THE TIME OF AN INCIDENT

The first two sentences of rule 44.1 are changed to: 'A boat may take a One-Turn Penalty when she may have broken one or more rules of Part 2 or rule 31 in an incident while racing. However, when she may have broken one or more rules of Part 2 while in the zone around a mark other than a starting mark, her penalty shall be a Two-Turns Penalty.

V2 POST-RACE PENALTIES

(a) Provided that rule 44.1(b) does not apply, a boat that may have broken one or more rules of Part 2 or rule 31 in an incident may take a Post-Race Penalty at any time after the race until the beginning of a protest hearing involving the incident.

(b) A Post-Race Penalty is a 30% Scoring Penalty calculated as stated in rule 44.3(c). However, rule 44.1(a) applies.

(c) A boat takes a Post-Race Penalty by delivering to the race office a written statement that she accepts the penalty and that identifies the race number and where and when the incident occurred.

Rule 32 After rule 32 add:

The race committee may display flag A (with no sound) while boats are finishing to signal that there will be no more races conducted that day.

Rule 67 After rule 67 add

(a) A boat that retires from a race or accepts a penalty does not, by that action alone, admit liability for damages.

(b) A protest committee shall find facts and make decisions only in compliance with the rules. No protest committee or US Sailing appeal authority shall adjudicate any claim for damages. Such a claim is subject to the jurisdiction of the courts.

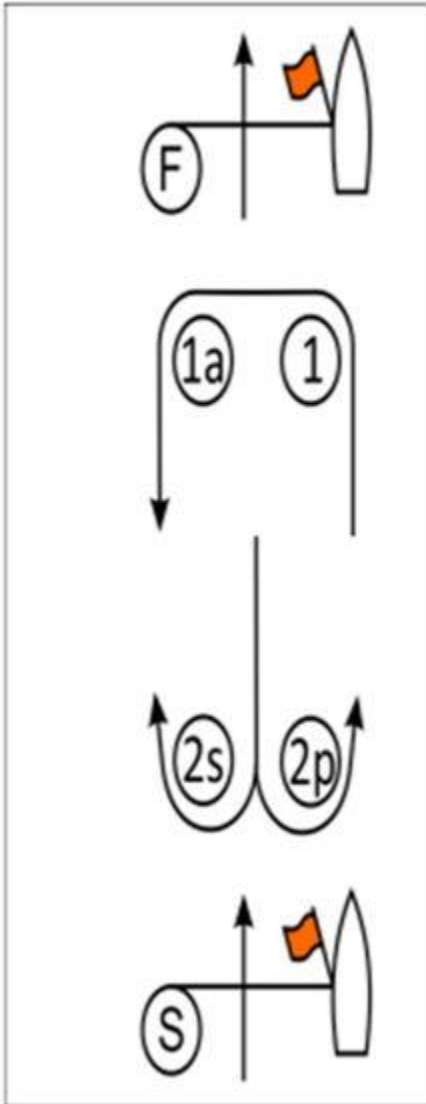
(c) A basic purpose of the rules is to prevent contact between boats. By participating in an event governed by the rules, a boat agrees that responsibility for damages arising from any breach of the rules shall be based on fault as determined by application of the rules, and that she shall not be governed by the legal doctrine of 'assumption of risk' for monetary damages resulting from contact with other boats

Appendix R, Procedures for Appeals and Requests

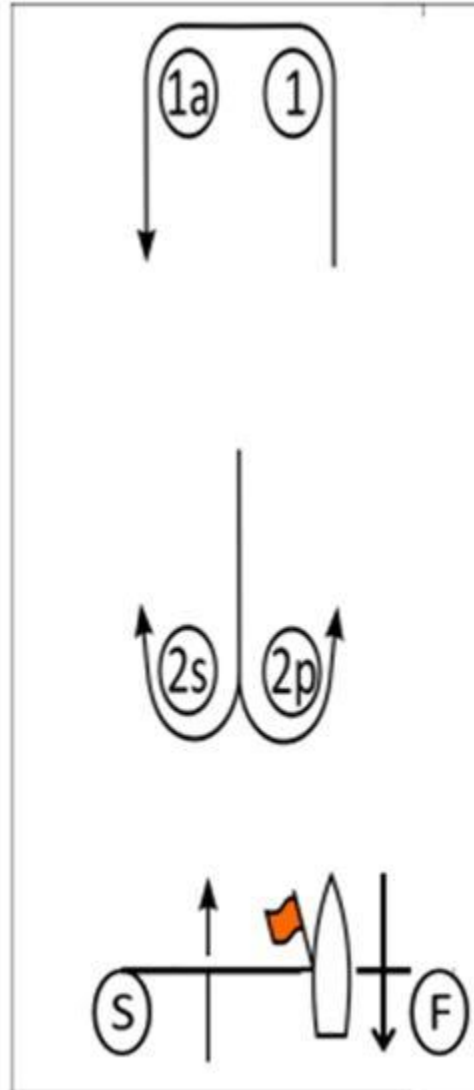
Replace World Sailing Appendix R with [US Sailing Appendix R](#)

Appendix B: Course Diagrams

Course W



Course L



W 1: Start-1-1a
Leeward gates 2p/2s
Finish (to Windward)

W 2: Start – 1-1a
Leeward gates 2p/2s
1-1a
2p/2s

L 1: Start – 1- 1a
Finish (Downwind)

L 2: Start – 1- 1a
Leeward gates 2p/2s
1-1a
Finish (Downwind)

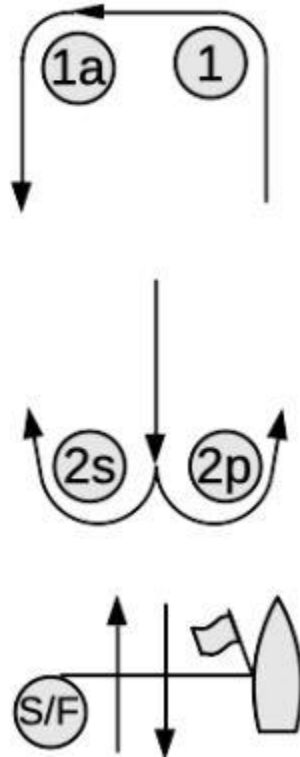
L 3: Start – 1- 1a- 2p/2s
-1- 1a-2p/2s

Finish (to Windward)

- 1-1a – Finish (Downwind)

Course LA

LA



LA 1 Start – 1- 1a
Finish (Downwind)

LA 2: Start – 1- 1a
Leeward gates 2p/2s
1-1a
Finish (Downwind)

LA 3 Start – 1- 1a- 2p/2s
-1- 1a-2p/2s
- 1-1a – Finish (Downwind)

Appendix C Sonar Sailing Instructions for Sunday June 26th

1 RULES – Races will be governed by rules as defined by in The Racing Rules of Sailing.

2 ENTRIES AND SCORING – Entry requirements and series scoring shall be determined by the Sonar fleet.

3 NOTICES TO COMPETITORS – Notices to competitors will be posted on the Race Committee Notice Board located on the south facing door of the MOD Closet.

4 CHANGES IN SAILING INSTRUCTIONS – Any change to the sailing instructions will be posted before 2100 hours on Saturday June 25th

5 SIGNALS MADE ASHORE –

5.1 Signals made ashore will be displayed from the flagpole on the Club Terrace.

5.2 When flag AP is displayed ashore with 2 sounds, ‘1 minute’ is replaced with ‘not less than 60 minutes’ in Race Signals AP.

5.3 When flag AP over H is displayed ashore, boats must return to the docks and may not leave the dock until the H flag is lowered.

6 SCHEDULE OF RACES

6.1 The warning signal for the first start of the Sonar Class will be given as soon as possible after, and within 5 minutes of the first start of the Viper fleet to take place after 13.45 hours.

6.2 The number of races will be at the discretion of the PRO

6.3 There will be no warning signal after 16.00 hours.

7 CLASS FLAGS

7.1 The Class flags will be the Sonar class symbol against a white field.

7.2 If the Race Committee does not have a class flag on the signal boat, they will make a verbal announcement prior to the warning signal and may use Pennant #1.

8 RACING AREA – Racing will take place approximately 1 to 2 miles SE to SW of G “1” at the mouth of Darien harbor.

9 COURSES

9.1 SI Appendix B, shows the courses W, L and LA including the approximate angles between legs, the order in which marks are to be passed, and the side on which each mark is to be left.

9.2 In addition the Sonars may sail course D1 as described in NYC 2022 sailing instructions appendix A , except that (i) Boats shall also sail around an offset mark (1a), if in place and (ii) The start and finish line are closed when sailing downwind (iii) A line between the Leeward gates (2p and 2S) is closed when sailing downwind. See diagram below.

9.3 No later than the warning signal, the race committee signal vessel will display the course and approximate compass bearing of the first leg.

9.4 The Leeward Gate marks (2S and 2P) can be replaced by a single leeward mark (Mark 2P) which shall be rounded to port.

10 MARKS

10.1 The starting marks will be race committee vessel(s) or an orange tetrahedron.

10.2 The finishing marks will be race committee vessel(s) or a yellow cylinder.

10.3 Marks 1 will be an orange tetrahedron. Mark 1 a (the offset) will be a yellow cylinder. Marks 2S and 2P will be green tetrahedrons

10.4 New marks, as provided in SI 12, will be as follows: Mark 1: Yellow tetrahedron. Mark 1a: Yellow Cylinder Mark 2P and 2S: Orange Tetrahedrons

10.5 Mark 2 for Course D shall be an Orange Tetrahedron (See 9.2) .New Mark 2 for Course D shall remain an Orange Tetrahedron

11 THE START

11.1 Races will be started using RRS 26.

11.2 The starting line is between a staff displaying an orange flag on the race committee signal vessel and either the course side of the pin-end starting mark or a staff displaying an orange flag on race committee vessel at the other end of the finishing line.

11.3 If any part of a boat's hull is on the course side of the starting line at her starting signal and she is identified, the race committee will attempt to hail her sail number. Boats may not base a request for redress on the failure to hail her number, failure of her to hear such a hail, or the order in which boats are hailed. This changes RRS 62.1(a).

11.4 A boat that does not start within 5 minutes after her starting signal will be scored Did Not Start without a hearing. This changes RRS A5.1 and A5.2.

11.5 Between the warning signal of the Viper until the warning signal of the Sonars, the Sonars shall keep well clear of the starting area and of all Vipers.

12 CHANGE OF COURSE

12.1 B E F O R E A S T A R T – The Race Committee may change the position of the windward mark for the Sonar Class after the Viper class starts. This will be signaled by displaying code flag "C" over a green Triangle or "C" over a red rectangle before the preparatory signal. This changes Rule 33.

12.2 CHANGE OF THE NEXT LEG OF THE COURSE AFTER THE START - To change the next leg of the course, the race committee will lay a new mark (or move the finishing line) and remove the original mark as soon as practicable. New marks set after a CHANGE OF COURSE are described in 10.4 and 10.5. When in a subsequent change a new mark is replaced, it will be replaced by an original mark.]

13 THE FINISH

13.1 The finishing line is between a staff displaying a blue flag on the race committee vessel and either the course side of the finishing mark or a staff displaying a blue flag on race committee vessel at the other end of the finishing line.

13.2 When finishing course D , Sonars shall leave the Race Committee vessel to starboard .

14 TIME LIMIT – The time limit for the first boat to sail the course and finish in each class will be 75 minutes. The time limit for the first boat to round the first weather mark will be 30 minutes. Boats failing to finish within the time limit, or more than 15 minutes after the first boat in their class finishes - whichever is later - will be scored TLE. A TLE score will equal to the number of boats that sail the course and finish plus two, provided that TLE shall not exceed the number of starters. This changes Rule 35.

14 SUSTAINABILITY

14.1 (DP) Single Use Plastic bottles are banned on Noroton Yacht Club Grounds, and aboard Competitor boats starting from 12.00 noon on Friday 24th February until 9.00pm Sunday 25th February

14.2 Water bottles may be refilled at a filtered refilling station on the East wall of the clubhouse adjacent to the Junior sailing room

14.3 (DP) Recyclable waste should be placed in the clearly marked receptacles

14.4 The penalty for a breach of Rule 47 may include disqualification

15 HAUL OUT 15.1 (DP) During haul out after racing, priority shall be to visiting Vipers and borrowed Vipers so that they can be derigged and attend the awards ceremony. Sonars and Club member Vipers shall assist these boats by providing them priority in the queue for the hoists and waiting on docks that are not adjacent to the hoists.

D 1

