



2022
2.4mR INTERNATIONAL
PARA SAILING CHAMPIONSHIP
DAVIS ISLANDS YACHT CLUB



2.4mR World Championship 2.4mR Para International Championship November 5 – 11, 2022

**Organizing Authority: International 2.4mR Class Association in conjunction with
Davis Island Yacht Club, Tampa, FL 33606**

Support Provided by Charlotte Harbor Youth Sailing, Port Charlotte, FL 33952

SAILING INSTRUCTIONS

1 RULES

- 1.1 The regatta will be governed by the rules as defined in The Racing Rules of Sailing (RRS), including Appendix T, the US Sailing Prescriptions to rules 67 and 76.1 (see NoR) and the International 2.4mR Class Rules.
- 1.2 For those competing in Norlin Mark III One Design Division, the 2.4 Norlin One Design Class Rules will also apply.
- 1.3 When the jury decides that a boat has broken a class rule, it may disqualify the boat or impose a scoring penalty of any percentage to be calculated in accordance with RRS 44.3 (c), or give a warning.

2 CHANGES TO SAILING INSTRUCTIONS

Any change to the sailing instructions will be posted before 0900 on the day it will take effect, except that any change to the schedule of races will be posted by 2000 on the day before it will take effect.

3 COMMUNICATION

VHF radio channel 72 will be used for the race committee to communicate with support vessels for safety and other purposes.

4 SIGNALS MADE ASHORE

- 4.1 Signals made ashore will be display on the flagpole at the west end of the property.
- 4.2 When flag AP is displayed ashore, '1 minute' is replaced with 'not less than 45 minutes' in Race Signals AP.

5 SCHEDULE OF RACES

5.1

Date	Time	Activity
Monday, November 7	1400	Warning – Practice Racing
Tuesday, November 8	1000	First Scheduled Warning, 3 races are planned
Wednesday, November 9	1000	First Scheduled Warning, 2 races are planned
Thursday, November 10	1000	First Scheduled Warning, 3 races are planned
Friday, November 11	1000	First Scheduled Warning, 2 races are planned
	1400	No warning signal after this time

5.2 To alert boats that a race will begin soon, the orange starting line flag will be displayed with one sound at least five minutes before a warning signal is made.

6 CLASS FLAG

The class flag will be a rectangular white flag with "2.4" in blue.

7 RACING AREA AND CHECK IN

7.1 SI Addendum A shows the racing area.

7.2 [DP] All competitors shall check in before the first race of the day by sailing past the stern of the race committee signal vessel which will be displaying flag "L".

8 COURSES

SI Addendum B shows the courses, including the approximate angles between legs, the order in which marks are to be passed, and the side on which each mark is to be left.

9 MARKS

9.1 The starting marks will be a signal vessel and a pin vessel.

9.2 Marks 1, 2S, and 2P will be yellow tetrahedrons.

9.3 Mark 1a will be a red ball.

9.4 The finish marks will be a red ball and a finish vessel.

9.5 New marks, as provided in SI 11, will be orange tetrahedrons.

10 THE START

10.1 The starting line is between a staff displaying an orange flag on the signal vessel at the starboard end and a staff displaying an orange flag on the pin vessel at the port end.

10.2 Before the warning signal, the race committee will display the course identifier, the approximate compass bearing and distance of the first leg.

10.3 The race committee will not hail boats on the course side of the starting line at the starting signal.

10.4 As a courtesy, flags for individual recall, general recall, and postponement may be displayed from the pin vessel. The flags displayed on the signal vessel are official.

10.5 Boats may not *start* more than five minutes after the starting signal.

11 CHANGE OF THE NEXT LEG OF THE COURSE

To change the next leg of the course, the race committee will lay a new mark (or move the finishing line) and remove the original mark as soon as practicable.

12 THE FINISH

The finishing line is between a staff displaying a blue flag on the finish vessel and the course side of the finishing mark.

13 TIME LIMITS

13.1 If no boat has passed the first mark within 30 minutes, the race will be abandoned.

13.2 The time limit for the first boat to sail the course and finish is 120 minutes.

13.3 Boats still racing 30 minutes after the first boat sails the course and finishes, and not subsequently retiring, penalized, or given redress, will be scored DNF. This changes RRS 35 and A5.1.

14 HEARING REQUESTS

14.1 The protest time limit is 60 minutes after the race committee finish vessel docks, or the race committee signals no more racing today, whichever is later.

14.2 Hearing request forms are available from the Regatta Room located on the ground floor of the Clubhouse.

14.3 Notices will be posted no later than 30 minutes after the protest time limit to inform competitors of hearings in which they are parties or named as witnesses, and the approximate schedule of hearings. Hearings will be held in the Regatta Room.

14.4 Decisions of the International Jury are final.

15 SAFETY REGULATIONS

- 15.1 RRS 40.1 applies.
- 15.2 If a competitor needs the assistance of a safety boat the visual signal shall be the lowering of the jib, or if this is not possible, signaling with a whistle or horn. Competitors may hail on VHF 72 in an emergency.
- 15.3 [DP] A boat that retires from a race or leaves the racing area before the end of racing shall notify the race committee at the first reasonable opportunity.

16 OFFICIAL VESSELS

- 16.1 The signal vessel is an Island Hopper 30 named Guardian II.
- 16.2 Other official vessels will display race committee flags.

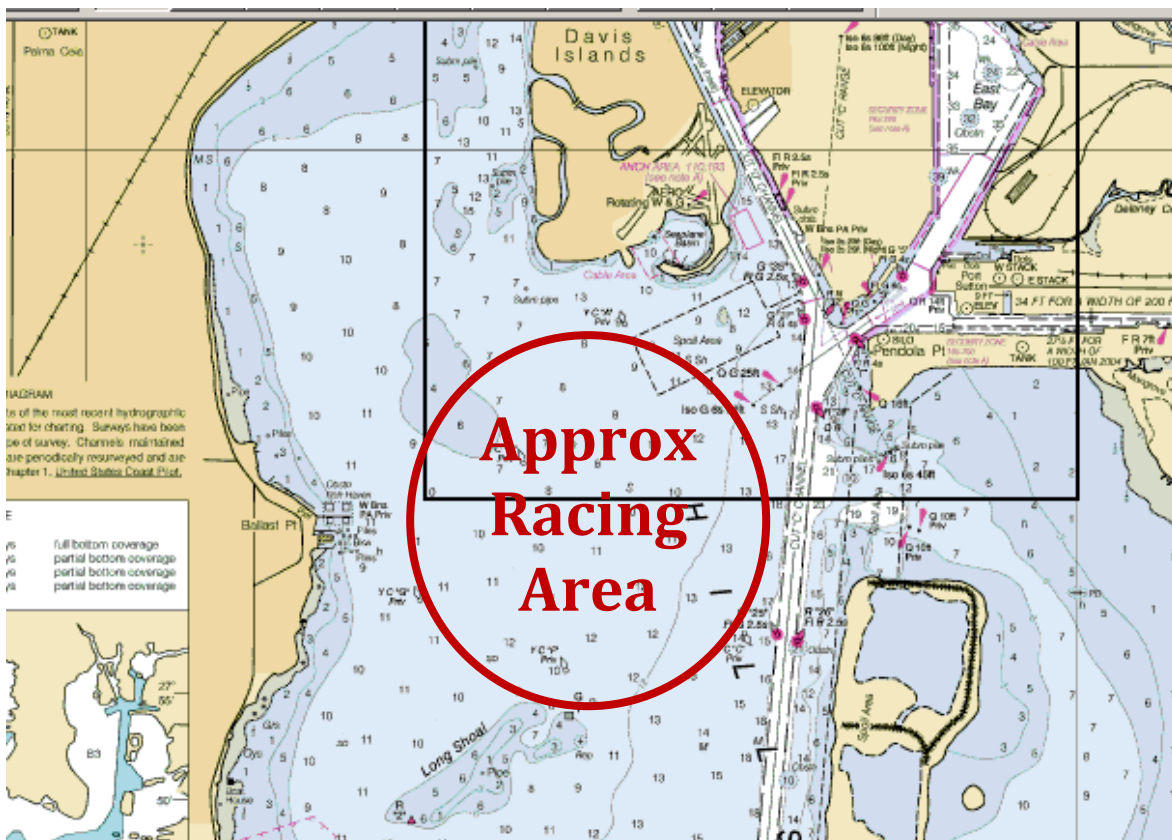
17 SUPPORT VESSELS

- 17.1 Support vessel regulations are described in the NoR.
- 17.2 [DP] Coaches and other support persons shall stay outside the racing area from the time of the preparatory signal until all boats have finished or retired, or the race committee signals a postponement, general recall, or abandonment.

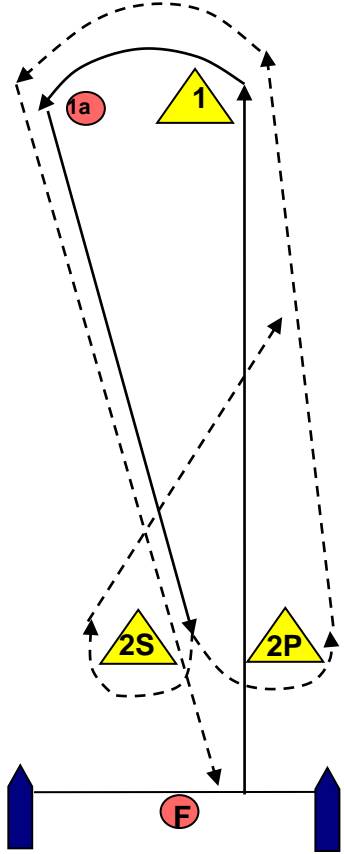
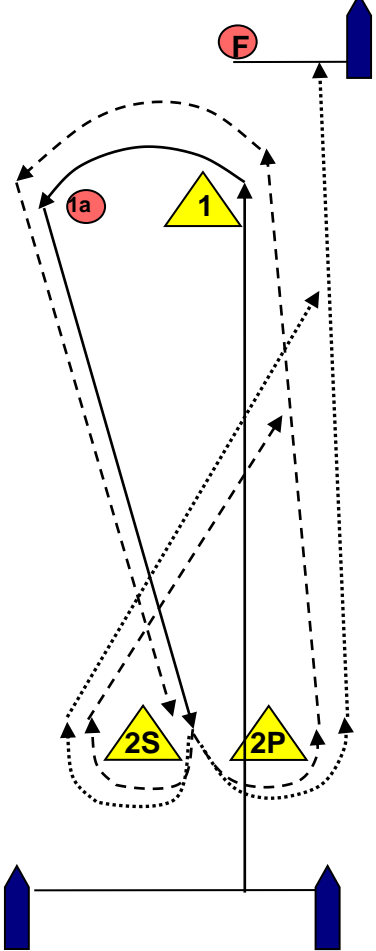
18 HAUL-OUT RESTRICTIONS

- [DP] Boats shall not be hauled out during the event except with and according to the terms of prior written permission of the Jury.

ADDENDUM A – RACING AREA



ADDENDUM B – COURSES

Course 4		Course 5
		
<p>Start, 1 (port), 1a (port), between 2S and 2P, 1(port), 1a (port), finish</p>		<p>Start, 1 (port), 1a (port), between 2S and 2P, 1(port), 1a (port), between 2S and 2P, finish</p>

THANKS to our sponsors

Edge Sailing

