

2022 BCYC Weekend Series Sailing Instructions

Rules

The races will be governed by: The *Racing Rules of Sailing for 2021-2024 (RRS)*, the prescriptions of the US Sailing, the Notice of Race and by these Sailing Instructions.

Notice to Competitors

Notices will be posted on the Bay City Yacht Club Website.

Changes in Sailing Instructions

Any changes in the *Sailing Instructions* will be posted no later than 24 hours prior to racing on one or more of the following media: direct email, yachtscore.com, or the "BCYC Sailing" Facebook page.

Yachts and Equipment

All yachts shall carry the items listed below in addition to all Government required equipment.

Bucket: Each yacht shall carry at least 1 sturdy bucket of at least two gallons (8 liters) capacity with a lanyard attached.

Cockpit Knife: Each yacht shall carry a strong, sharp knife, sheathed and securely restrained which is readily accessible from the deck and/or cockpit.

Communication: Each yacht shall carry a VHF radio with channels 9, 16, 22A and 72.

Compass: Each yacht shall have a permanently mounted magnetic compass independent of the boat's electrical system suitable for steering at sea.

Light: It is strongly recommended that each crewmember carry a personal light if sailing after dark.

Flotation Devices: Each crewmember shall wear a U.S. Coast Guard approved PFD at all times while underway, unless the Person-In-Charge directs they may be put aside. A lifejacket can save your life, but only if you wear it.

Throwables: Each yacht shall carry at least one U.S. Coast Guard approved throwable flotation device that is readily available, in good and serviceable condition with a whistle attached.

Signals

International code flags and audible sounds shall be as prescribed by the RRS and/or as modified by these instructions with the exception of Fleet flags which will be colored BCYC M&J flags assigned as follows:

2 Fleet Start Option

Fleet/Start One: Red - All multihulls

Fleet/Start Two: Blue - Cruising and Spinnaker monohulls

3 Fleet Start Option

Fleet/Start One: Red - All multihulls

Fleet/Start Two: Blue - Cruising monohulls

Fleet/Start Three: Yellow - Spinnaker monohulls

All yachts shall monitor Ch. 72 prior to the start of all races for hails from the on-water RC regarding the race and weather-related issues. The RC will conduct the start on Ch. 72 once the anchor is set and the fleet is notified. All yachts shall monitor Ch. 72 during the race to receive hails from the RC or to hail the RC.

Racing Area

The Racing Area shall be in Saginaw Bay extending north to Tawas Bay using selected government aids-to-navigation and the buoys in the BCYC racing circle with starts beginning at 'S' unless otherwise designated in these instructions. **Course diagrams are at the end of the Sailing Instructions.**

Fleets

Yachts may elect to race in a mono Cruising or Spinnaker class, Multihull or beach cat class. Yachts must declare which fleet they will be racing prior to their first race and have a valid rating form on file with the Chief Measurer.

Cruising class rules are:

1. Spinnakers must be tacked to bow or bowsprit (no spinnaker poles) and flown 18" or less above the deck.
2. No headsail or spinnaker peels.
3. Will race using their spinnaker rating.
4. If a yacht declares they will not be using a spinnaker, they may race using their Main & Jib rating. This declaration should be made prior to the start of the season. If an exception is desired after the season has begun, or for a single race, the request must be submitted in writing to the rear commodore by the Wednesday prior to the race.

Starts

All starts will follow RRS Part 3 sec. 26 *Starting Races* using the sequence detailed in the **Signals** section of these instructions. (a.k.a. - 5-minute rolling starts)

Signal	Flag and Sound	Minutes before Start
Warning	class flag up: 1 sound	5
Preparatory	P flag up: 1 sound	4
One-minute	P flag down: 1 sound	1
Start	class flag down: 1 sound	0

The starting line will be between a staff displaying an orange flag on the Race Committee boat and the starting mark.

If no RC is available, the start sequence will be conducted via radio on Ch. 72. A starting line will be set using an inflatable buoy. The Fleet Captain or designee will initiate the start sequence and decide if one or two starts are necessary based on the make-up of the race fleet. If there is sufficient participation in the cruising class, they will start separately, otherwise there will be one monohull start followed by one multihull start. All beach cats and multihulls will start together. Regardless of the start sequence, each class (cruising and spinnaker, multihulls and beach cats) will be scored separately. The timing sequence of the radio start is identical to the one outlined above except no flags will be used and the '1 sound' will be heard via radio when the RC says "MARK!".

The starting area is defined as the rectangle on the pre-start side of the starting line extending 150 feet back from the starting line and extending 150 feet on both ends of the starting line. After the first preparatory signal all yachts must stay out of the starting area except those yachts whose preparatory signal has been signaled.

Recalls

Individual recalls will be signaled in accordance with RRS 29.1 but altered such that the "X" flag will not be raised. Instead, the Race Committee will announce premature starters on Ch. 72. However, the onus to start properly and listen for OCS announcements remains with each individual yacht.

General Recalls

General Recalls will be made in accordance with RRS 29.2 except altered such that the first substitute flag will stay up until any remaining fleets have started. The recalled fleet will re-start after all other fleets have started. Subsequent recalled fleets will re-start in the order they were recalled.

The Finish

The finish line is between a staff displaying an orange flag on the Race Committee boat and the last mark posted. Upon finishing, each yacht must record her finish time. The RC asks each finisher to attempt to record the name of the boats finishing immediately ahead and behind whenever possible.

If no RC is on station at the finish mark each yacht is required to record their GPS finish time. Yachts must finish within 100 feet of the finish mark when the bow crosses a plane perpendicular to the last rhumb line.

Withdrawal

A yacht which retires from a race is asked to notify the Race Committee either before leaving the racecourse area or, if that is impossible, immediately after arriving at shore.

Awards

The Sailing Committee has scheduled **7 individually scored** races for the season – there will be no season championship award. There will be no award if only one yacht competes in any given fleet.

Scoring

The low-point scoring system prescribed in *Appendix A4* of the *The Racing Rules of Sailing for 2021-2024* will apply. The score given for a first place will be 1 point. The points for all other positions will correspond to the order of finish. Yachts that start but do not finish (DNF) will receive a score of number of finishers +1. Yachts that are DSQ or OCS will receive a score of the number of boats registered for your fleet +1. Yachts that do not race will not be scored. For yachts scored DSQ in any race, for the purposes of scoring, rule 90.3 will be followed.

After applying RRS A8.1, the following will be used to break ties. If a tie remains between two boats, it shall be broken in favor of the boat that scored better than the other boat in more races. If more than two boats are tied, they shall be ranked in order of the number of times each boat scored better than another of the tied boats. Excluded scores shall be used.

Outside Assistance

The use of drones to gain advantage on the racecourse is prohibited under rule 41.

Protests

The BCYC Pre-Protest Arbitration process will be used for all protests. **See Appendix Z for specific details of the BCYC Pre Protest Arbitration Process.**

A protesting boat shall inform the Race Committee at their earliest opportunity, but not later than 30 minutes after finishing the race, of their intent to lodge a protest. If the race committee is not

responsive or available, the protest may be lodged with a BCYC Race Authority listed below *BEFORE* 19:00 on the day which the protest incident occurred with the exception of the Tawas Night Race. For that race, the time limit is 12:00 the day after the start of the race. Failure to notify BCYC Race Authorities of a protest before these time limits will result in the protest being invalid.

If you are unable to reach the race committee or a BCYC Race Authority on the water, you may also leave a voice mail on one of the following person's mobile numbers, **but it still MUST be done before the time limits set forth above for the protest to be valid.**

These individuals are

Terry Hart - Rear Commodore, 989-598-0849; Grant Hilger – Event Admin 989-615-1654 .

If you have made notification within the required time limit but are unable to make it to turn in your protest *on the correct form* within that time limit, the onus is on YOU to make sure it gets into the hands of one of the BCYC Race Authorities no later than 19:00 the day after the incident. Failure to do so will result in the protest being invalid.

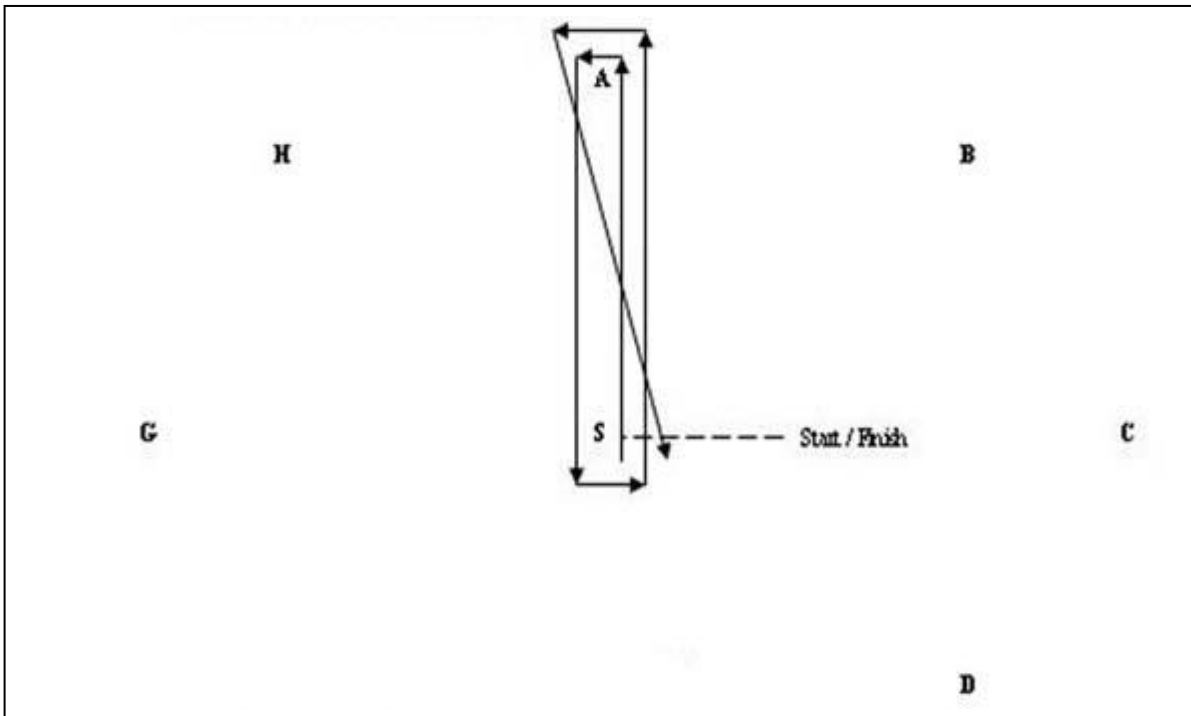
If the protestee has not acknowledged their involvement in the protest within the time limits outlined above by contacting Race Committee or a BCYC Race Authority, a Race Authority will attempt to contact them as outlined in Appendix Z herein. The BCYC Pre-Protest Arbitration, or a formal protest hearing if necessary, will be held no later than one week from the event in which the protest is lodged unless otherwise agreed to by all parties. Note that a Pre-Protest Arbitration may not always occur on the day of the incident.

COURSE DIAGRAMS

NOTE: Some courses are not on the schedule but are included to allow shortening options.

Course 1: Short Windward/Leeward = 5.0 nm

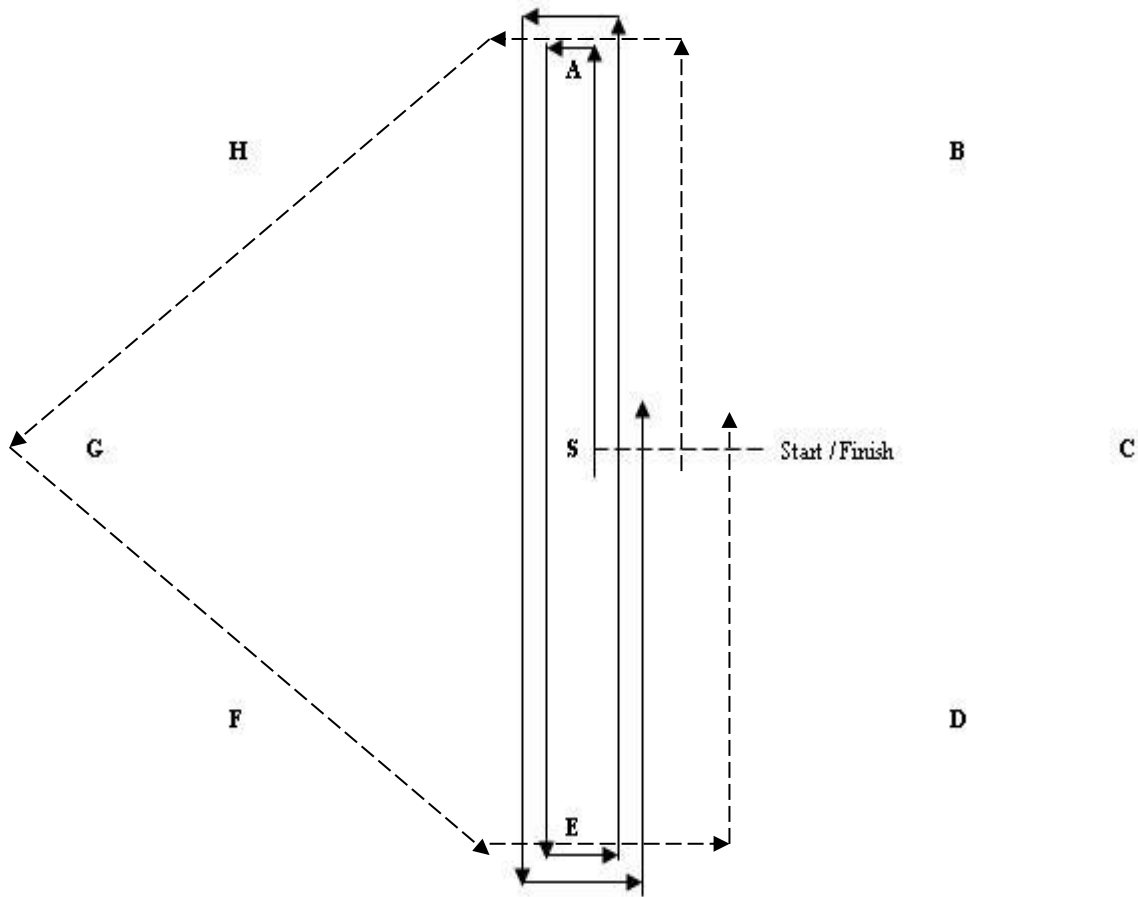
Example is course 1A for N wind



Course	Start	1	2	3	Finish
A	S	Ap	Sp	Ap	S
B	S	Bp	Sp	Bp	S
C	S	Cp	Sp	Cp	S
D	S	Dp	Sp	Dp	S
E	S	Ep	Sp	Ep	S
F	S	Fp	Sp	Fp	S
G	S	Gp	Sp	Gp	S
H	S	Hp	Sp	Hp	S

Course 2: Long Windward/Leeward = 10.0 nm spin/multi, 6.0 nm cruising

Example is course 2A for N wind



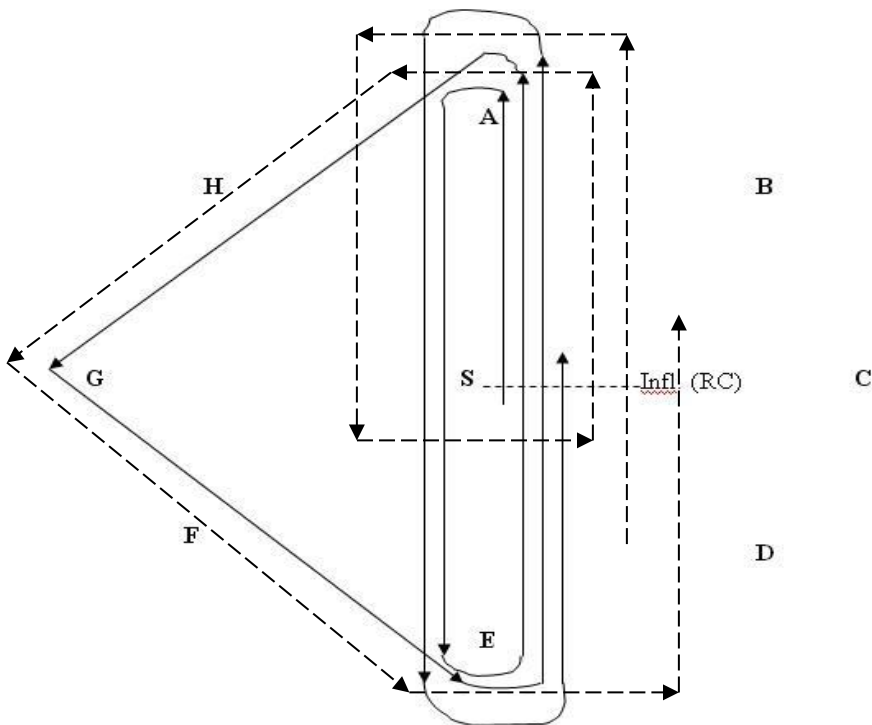
Spinnaker and Multi's

Cruising

Course	Start	1	2	3	4	Finish	Course	Start	1	2	3	Finish
A	S	Ap	Ep	Ap	Ep	S	A	S	Ap	Gp	Ep	S
B	S	Bp	Fp	Bp	Fp	S	B	S	Bp	Hp	Fp	S
C	S	Cp	Gp	Cp	Gp	S	C	S	Cp	Ap	Gp	S
D	S	Dp	Hp	Dp	Hp	S	D	S	Dp	Bp	Hp	S
E	S	Ep	Ap	Ep	Ap	S	E	S	Ep	Cp	Ap	S
F	S	Fp	Bp	Fp	Bp	S	F	S	Fp	Dp	Bp	S
G	S	Gp	Cp	Gp	Cp	S	G	S	Gp	Ep	Cp	S
H	S	Hp	Dp	Hp	Dp	S	H	S	Hp	Fp	Dp	S

Course 3: Long Modified Olympic = 16.02 nm spin/multi, 8.5 nm cruising

Example is of Course 3A with N wind



Spinnaker and Multi's

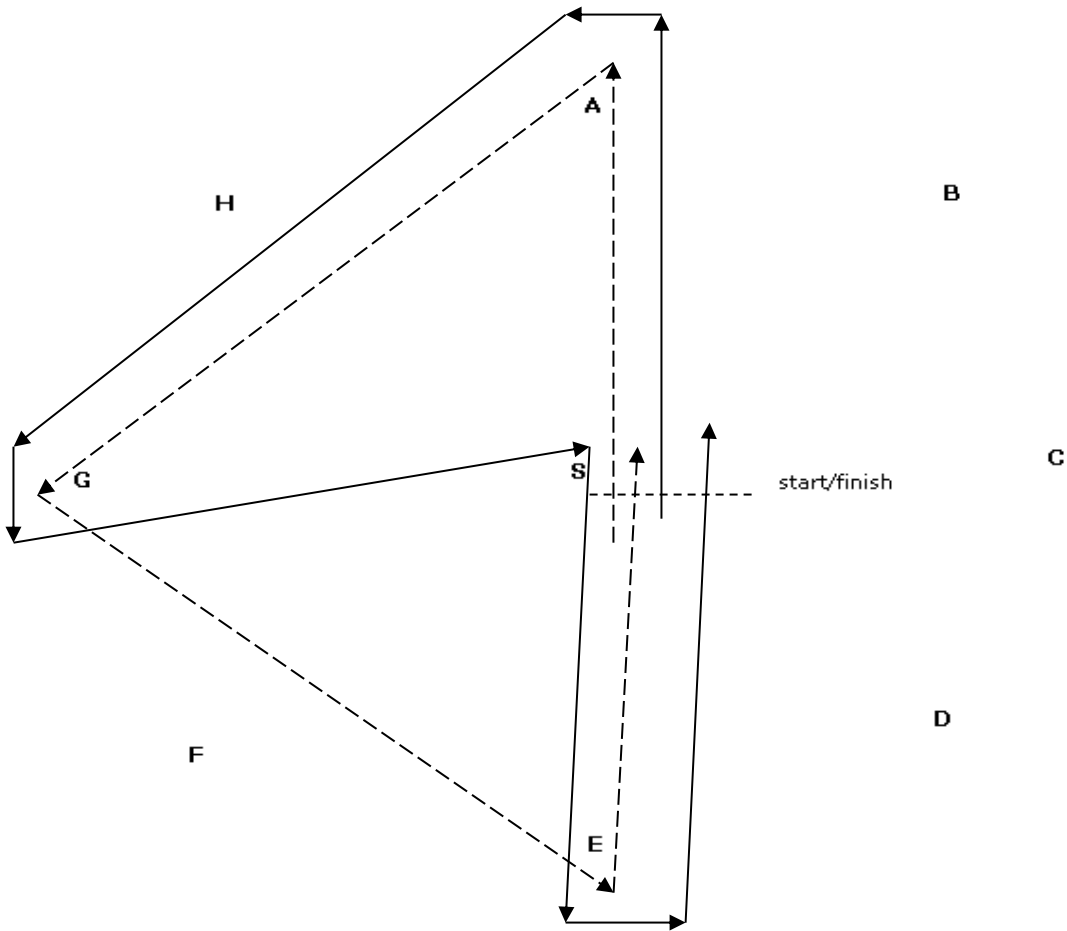
Course	Start	1	2	3	4	5	6	7	Finish
A	S	Ap	Ep	Ap	Gp	Ep	Ap	Ep	S
B	S	Bp	Fp	Bp	Hp	Fp	Bp	Fp	S
C	S	Cp	Gp	Cp	Ap	Gp	Cp	Gp	S
D	S	Dp	Hp	Dp	Bp	Hp	Dp	Hp	S
E	S	Ep	Ap	Ep	Cp	Ap	Ep	Ap	S
F	S	Fp	B	Fp	Dp	Bp	Fp	Bp	S
G	S	Gp	Cp	Gp	Ep	Cp	Gp	Cp	S
H	S	Hp	Dp	Hp	Fp	Dp	Hp	Dp	S

Cruising

Course	Start	1	2	3	4	5	Finish
A	S	Ap	Sp	Ap	Gp	Ep	S
B	S	Bp	Sp	Bp	Hp	Fp	S
C	S	Cp	Sp	Cp	Ap	Gp	S
D	S	Dp	Sp	Dp	Bp	Hp	S
E	S	Ep	Sp	Ep	Cp	Ap	S
F	S	Fp	Sp	Fp	Dp	Bp	S
G	S	Gp	Sp	Gp	Ep	Cp	S
H	S	Hp	Sp	Hp	Fp	Dp	S

Course 4: Harry A from US Sailing = 6.76 nm spin/multi, 6.0 cruising

Example is course 4A for N wind



Spinnaker and Multi's

Cruising

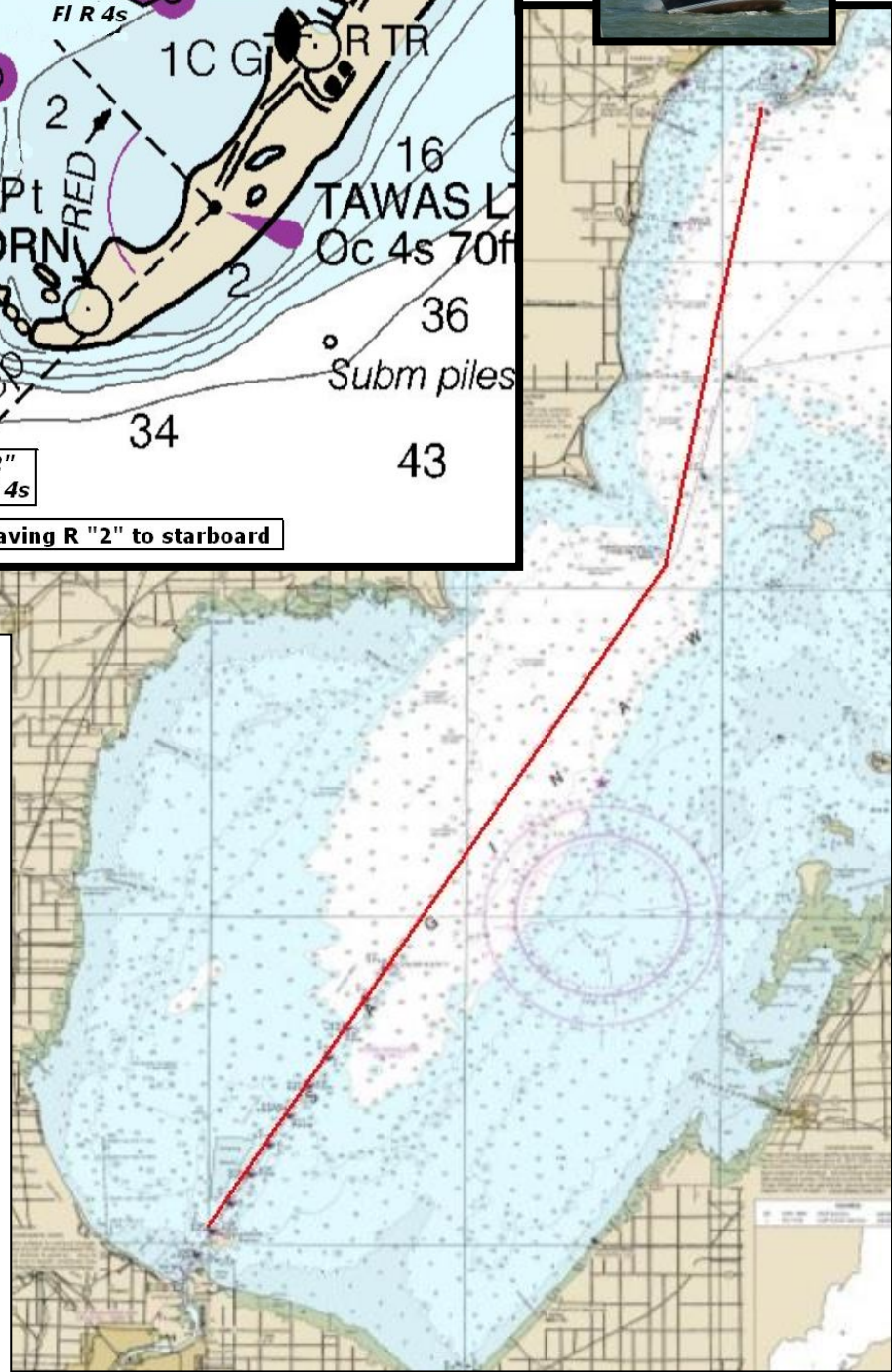
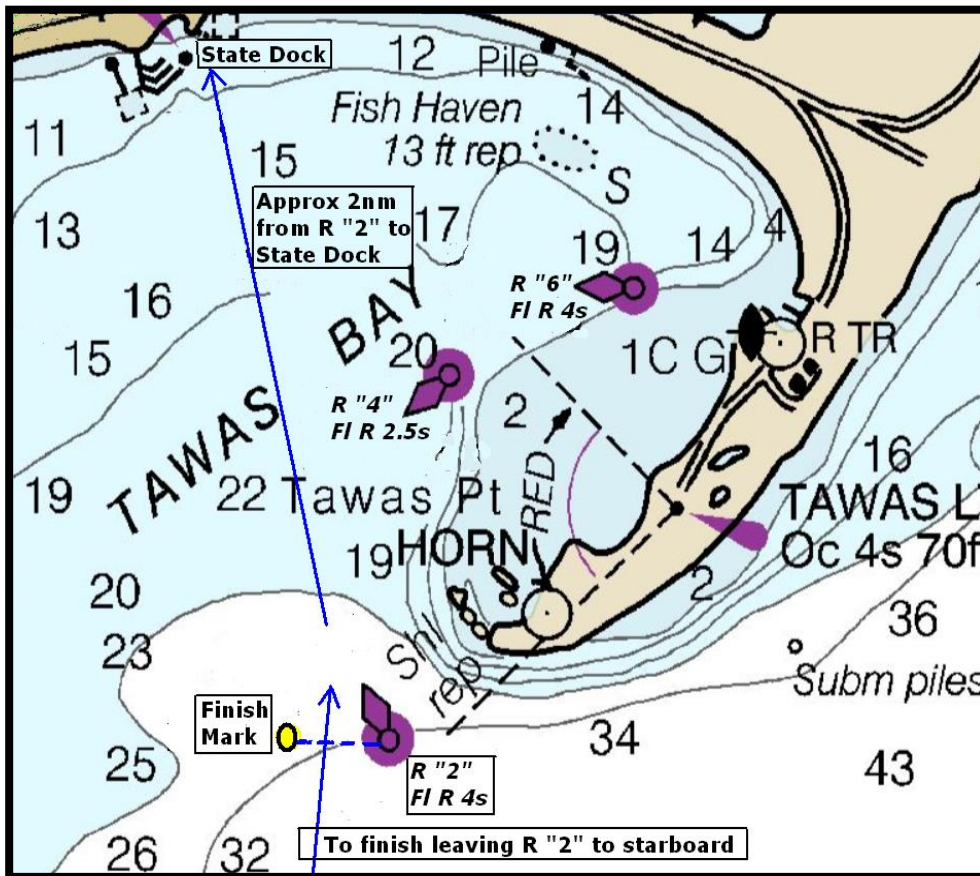
Course	Start	1	2	3	4	Finish	Course	Start	1	2	3	Finish
A	S	Ap	Gp	Ss	Ep	S	A	S	Ap	Gp	Ep	S
B	S	Bp	Hp	Ss	Fp	S	B	S	Bp	Hp	Fp	S
C	S	Cp	Ap	Ss	Gp	S	C	S	Cp	Ap	Gp	S
D	S	Dp	Bp	Ss	Hp	S	D	S	Dp	Bp	Hp	S
E	S	Ep	Cp	Ss	Ap	S	E	S	Ep	Cp	Ap	S
F	S	Fp	Dp	Ss	Bp	S	F	S	Fp	Dp	Bp	S
G	S	Gp	Ep	Ss	Cp	S	G	S	Gp	Ep	Cp	S
H	S	Hp	Fp	Ss	Dp	S	H	S	Hp	Fp	Dp	S

SPECIAL NOTE: Course includes Port (p) AND Starboard (s) roundings!

Course 5

Bay City to Tawas

Distance 36.6nm



Start at BCYC "D" Buoy:
43° 41.718'
83° 49.060'

Proceed to Tawas Bay
leaving Gravelly Shoal
Light to port:
44° 01.200'
83° 32.300'

Finish off Tawas Point
leaving government
buoy R "2" to starboard:
44° 14.463'
83° 28.259'

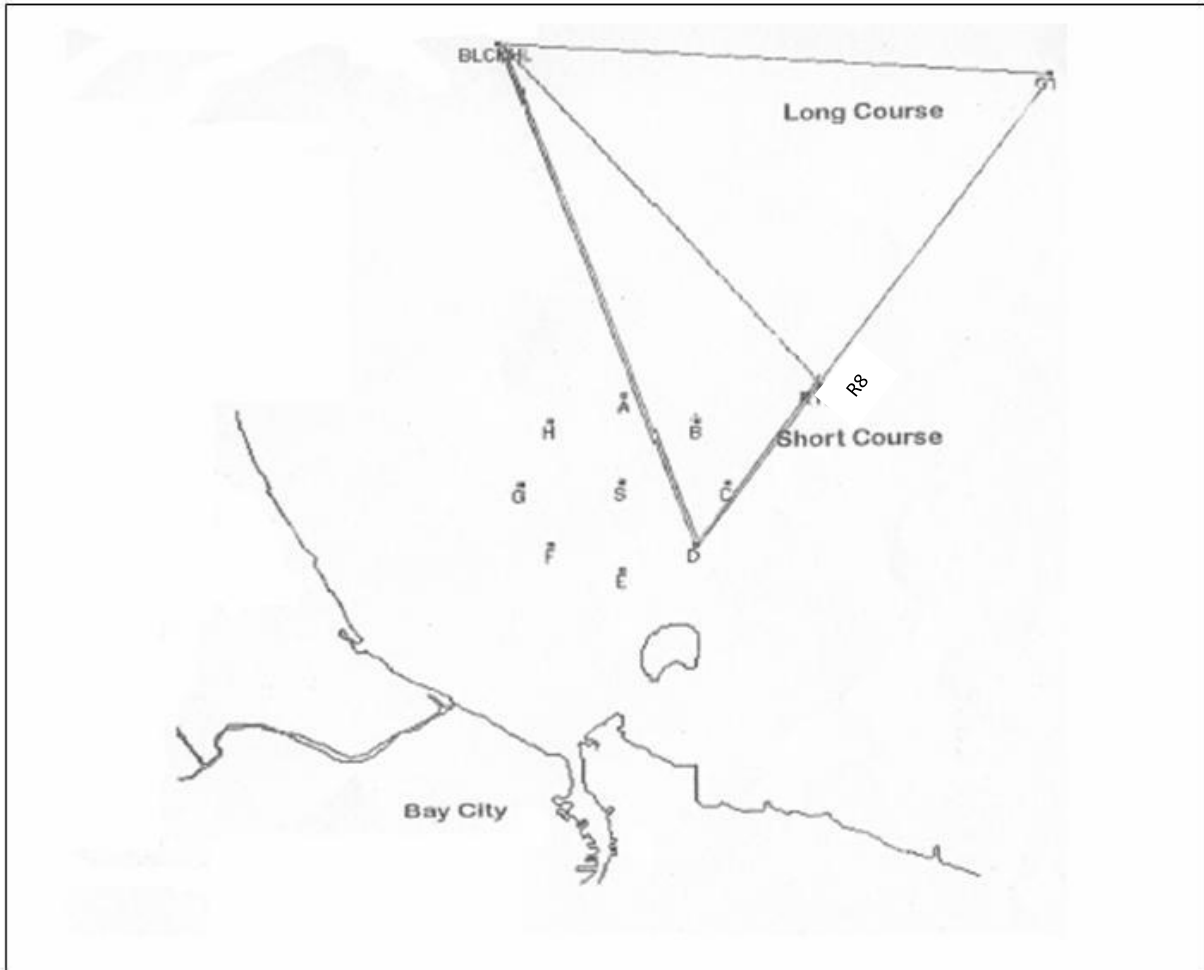
Finish between R "2" and
the inflatable and take
your own time. In the
absence of an inflatable
finish within 100' of R "2".

Course 6 - The Black Hole

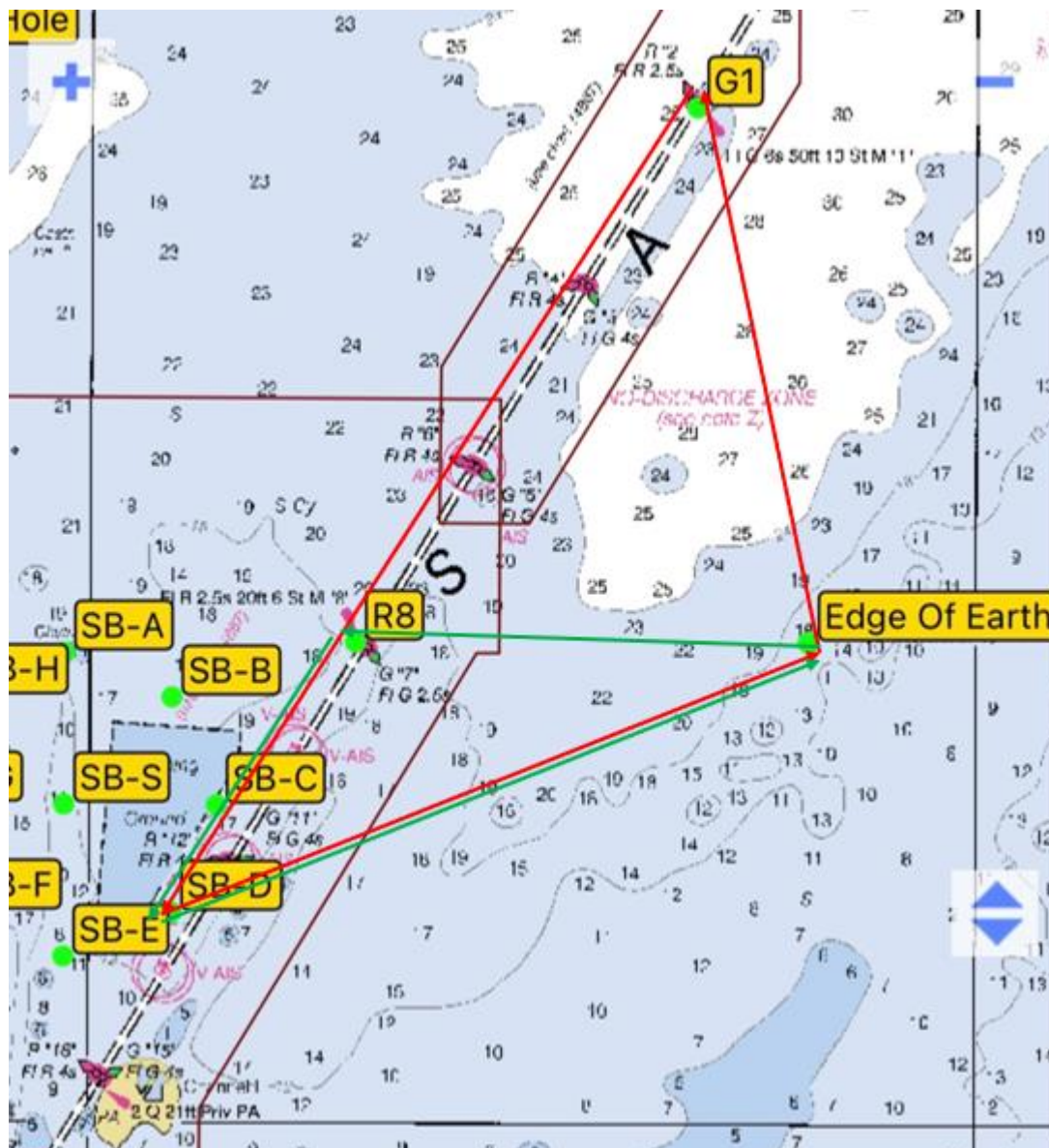
Long Course: Start at "D" Buoy ($43^{\circ}41.718'$ - $83^{\circ}49.060'$) then to the Black Hole drop buoy ($43^{\circ}48.800'$ - $83^{\circ}52.400'$) then to G1 Saginaw River Chanel Tower ($43^{\circ}48.330'$ - $83^{\circ}43.157'$) then finish at "D" Buoy.
22.4 nm

Short Course: Start at "D" Buoy ($43^{\circ}41.718'$ - $83^{\circ}49.060'$) then to the Black Hole drop buoy ($43^{\circ}48.800'$ - $83^{\circ}52.400'$) then to R8 Saginaw River Chanel Tower ($43^{\circ}43.940'$ - $83^{\circ}46.997'$) then finish at "D" Buoy.

Bearings (TRUE): From D to Black Hole drop buoy is 341°
From Black Hole drop buoy to G1 is 94°
From Black Hole drop buoy to R8 is 141°
From G1 to D is 213°
From R8 to D is 214°



Course 7 – Morley/Bickel Memorial Edge of the Earth Race



Spinnaker Course Length: 18.0 nm

Cruising Course Length: 12.0 nm

Spinnaker Course (in red) From to Distance & Bearing

From D to Edge of Earth Buoy is 5.6nm, bearing 067° True
 From Edge of Earth Buoy to G1 Tower is 4.5nm, bearing 348° True
 From G1 Tower to D is 7.9nm, bearing 213° True

Cruising Course (in green) From to Distance & Bearing

From D to Edge of Earth Buoy is 5.6nm, bearing 067° True
 From Edge of Earth Buoy to R8 is 3.7nm, bearing 270° True
 From R8 to S is 2.7nm, bearing 214° True

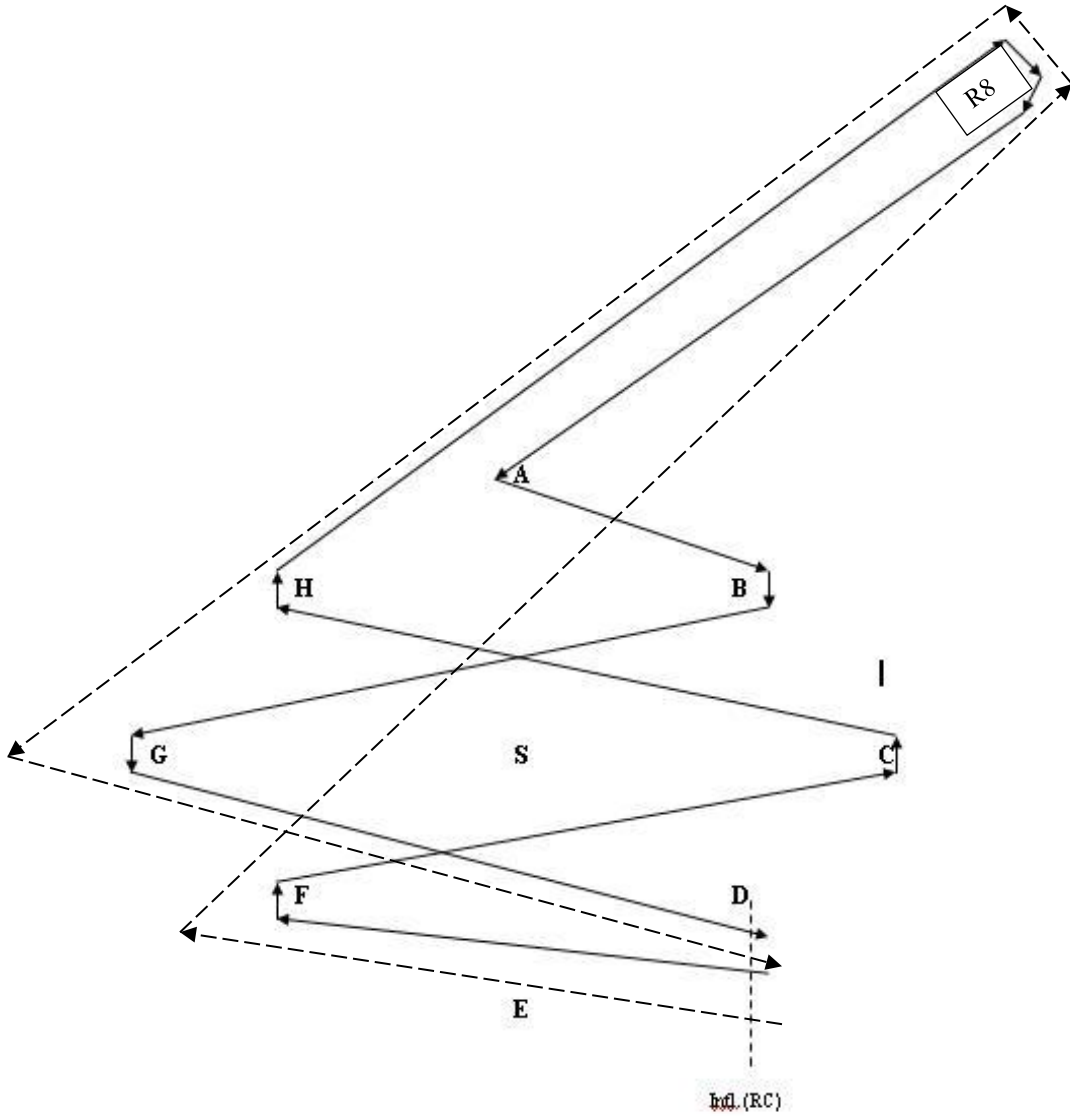
Buoy Coordinates

Edge of Earth Buoy	R8	G1
43° 43.951' N	43° 43.940' N	43° 48.330' N
83° 41.867' W	83° 46.990' W	83° 43.150' W

Course 8- Foredeck Challenge = 17.6 nm spin/multi, 11.9 nm cruising

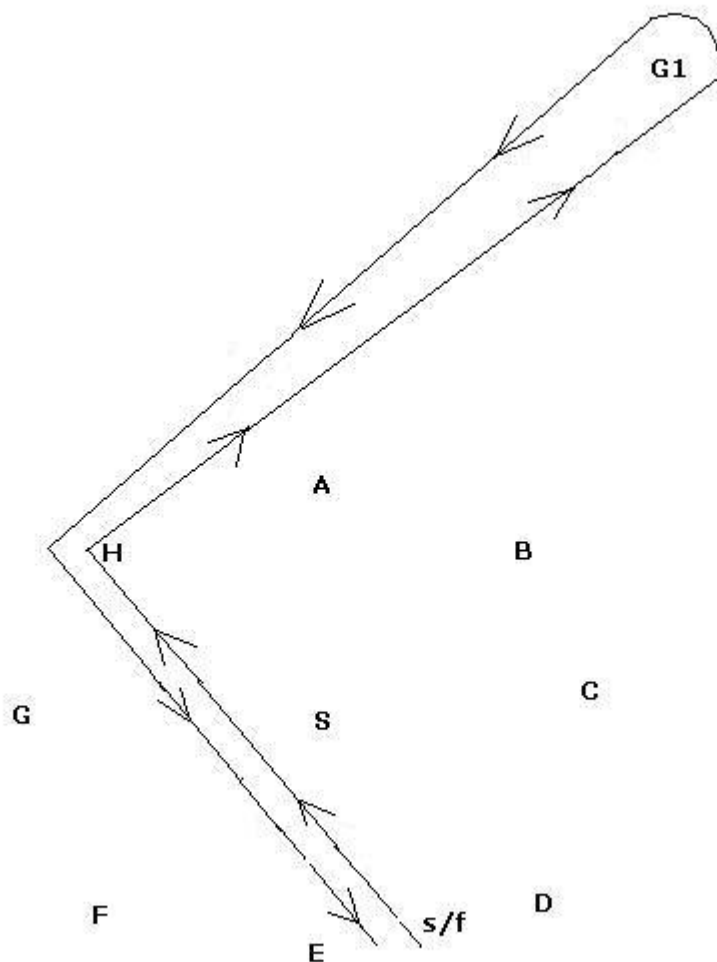
Spin & Multi Course - Start at "D" proceed to "F" (stbd), "C" (port), "H" (stbd), "R8" (stbd), "A" (port), "B" (stbd), "G" (port), Finish at "D".

Cruising Course- Start at "D" proceed to "F" (stbd), "R8" (port), "G" (port), Finish at "D".



Course 9 - G1 Tower Race - 20nm

Start at "E", proceed to "H" (stbd), "G1" (port), "H" (port), Finish at "E".

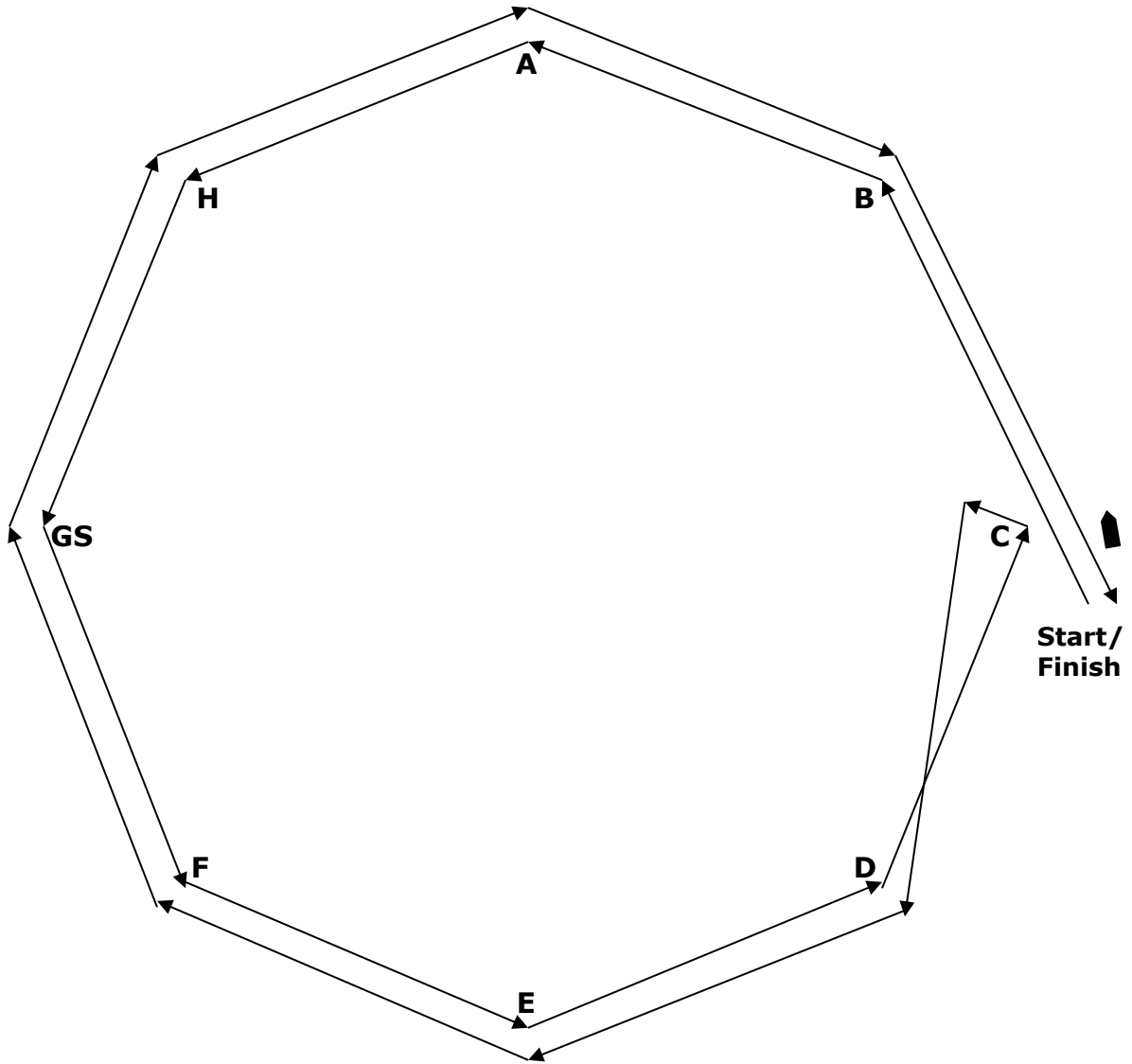


Course 10 – Circumnavi Drag Race

The Starting, Finishing, and Turning mark will be either "C", "D", or "E".
The example as shown has the start, finish, and turning mark at "C".

Short Course 7.7 nm - Start at "C" proceed to "B" - "A" - etc. around the circumference of the course finishing at "C".

Long Course 15.3 nm - Start at "C" proceed to "B" - "A" - etc. around the circumference of the course leaving all marks to port. Round "C" to port and reverse course around the same buoys leaving all marks to starboard. Finish at "C".

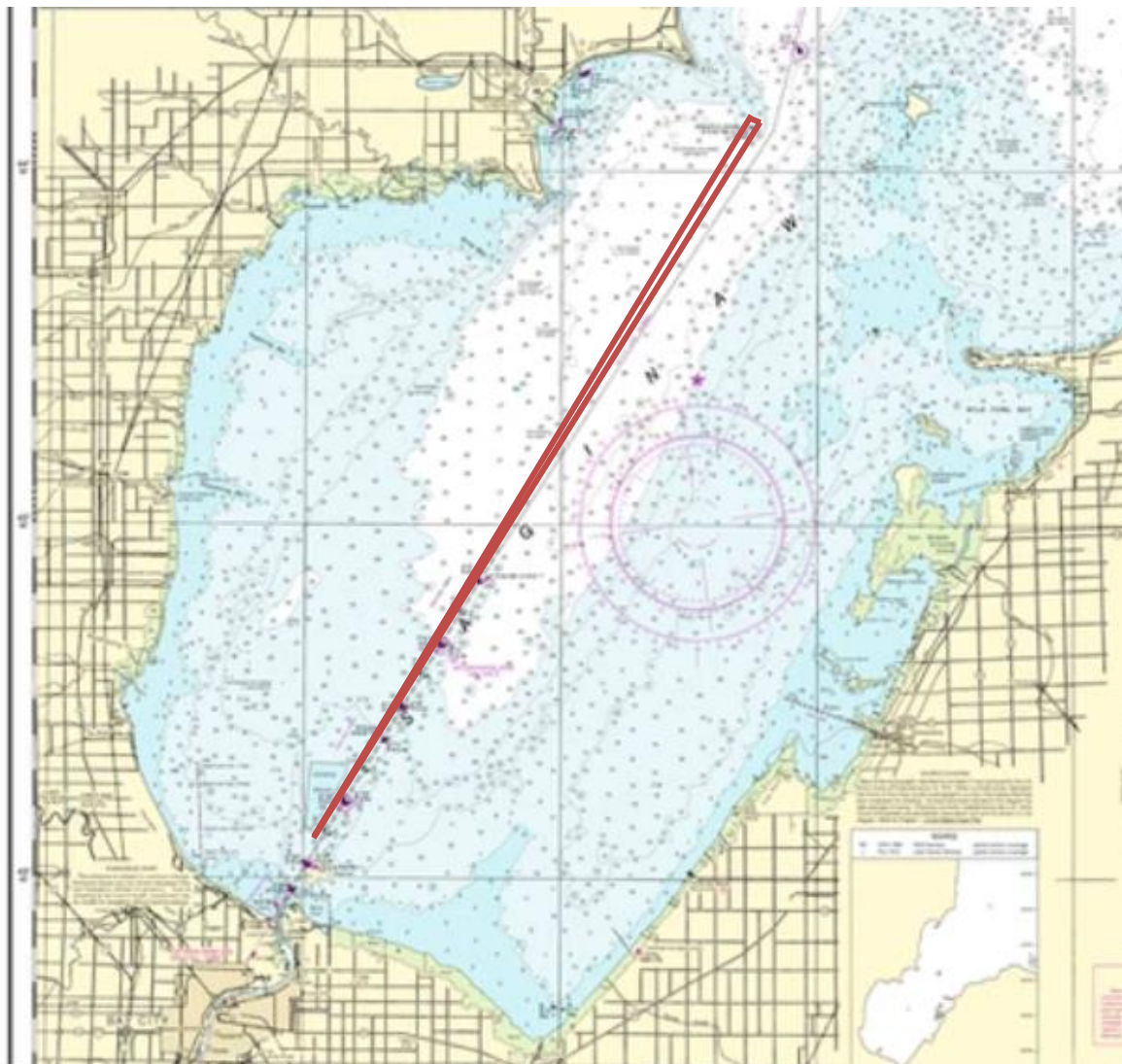


Course 11 Gravelly Shoals Race Distance 45.2nm

Start at BCYC "D" Buoy: **43° 41.718' N** **83° 49.060' W**

Proceed to Gravelly Shoal Light to port: **44° 01.200' N** **83° 32.300' W**

Finish at BCYC "D" Buoy



Note: Diagram is for illustrative purposes only.