

May 16, 2022



SOUTHERN BAY RACE WEEK

June 2 - 5, 2022

SAILING INSTRUCTIONS

**Organizing Authorities:
Hampton Yacht Club
Cruising Club of Virginia
Old Point Comfort Yacht Club**

The notation (DP) after a rule means that, at the discretion of the Protest Committee, the penalty for a breach of that rule may be less than DSQ. The notation (RC) after a rule means that only the Race Committee or Protest Committee can protest a breach of that rule.

1. RULES

- 1.1** The regatta will be governed by the Racing Rules of Sailing, 2021-2024, as modified herein.
- 1.2** US Sailing Prescriptions to RRS 63.2 will not apply.
- 1.3** Appendix V1 (Penalty at the Time of the Incident) applies for all fleets on all courses.
- 1.4** The Viper Class Rule requiring the use of class bow numbers will be in effect.

2. ENTRIES

- 2.1** The regatta is open to monohull keelboats or multihulls over 20 feet LOA.
- 2.2** All participating boats must meet current US Sailing Nearshore Safety Equipment Requirements, except that One-Design Fleets must meet safety standards of their class rules.
- 2.3** Eligible boats may enter online at <https://yachtscoring.com/emenu.cfm?eid=14948> OR by completing an official SBRW Entry Form and mailing it to Lin McCarthy at 4401 Chesapeake Ave, Hampton, VA 23669.
- 2.4** All boats, except those in the SBRW Cruising Class, must have a current, valid measurement certificate on file with their appropriate Class Association.
 - a. PHRF ratings will be those posted on the PHRF of the Chesapeake Valid List at the time of the regatta or a temporary rating issued by a handicapper of PHRF of the Chesapeake.
 - b. SBRW Cruising Class ratings will be assigned by the Race Committee and may not be appealed.
 - c. ORC Cruisers must have a current, valid ORC Club Rating Certificate.
 - d. Multihulls must have a current, valid CMA certificate.
- 2.5** An entered boat may not change fleets later than 1800 on Thursday, June 2.
- 2.6** The owner/skipper of each boat entered shall be responsible for the actions of his/her crew and guests. The legal drinking age in Virginia is 21 years old. Proof of age will be required. In the event of a serious breach of conduct, sportsmanship, destruction of property, under age drinking, or failure to comply with a request from any regatta official, the boat or competitor may be subject to expulsion from the regatta.

3. BOAT REQUIREMENTS

3.1 A bow number/decal will be supplied to each boat and shall be properly affixed to both sides of the hull at all times while racing. Mounting instructions will be supplied with the decal. *(DP)*

3.2 Once launched, all boats (except Vipers) shall remain in the water until the conclusion of the regatta, except with prior written permission of the PRO. *(DP)*

3.3 All boats (except SBRW Cruising Class) shall display the sail number issued by their National Authority (US Sailing) OR the number as maintained by their fleet or class. **All sail numbers on a boat must be the same**, except with prior written permission from the PRO. *(DP) (RC)*

3.4 From the backstay, each boat shall display her class flag or ribbon as per Appendix F. *(RC)*

4. NOTICES TO COMPETITORS & CHANGES TO SAILING INSTRUCTIONS

4.1 All official Notices to Competitors and Changes to the Sailing Instructions will be posted on the Yacht Scoring Official Notice Board.

4.2 It is the responsibility of each competitor to periodically check the Official Notice Board for any notices and/or S.I. changes.

4.3 Changes to these Sailing Instructions will be posted on the Official Notice Board by 0830 on the day they will take effect, except that any change to the schedule of races will be posted no later than the expiration of the protest time limit on the day before it will take effect.

5. SIGNALS MADE ASHORE

5.1 Signals made ashore will be displayed at the HYC flagpole.

5.2 The display of Flag "AP" ashore accompanied by two sound signals means the start of racing is postponed. The lowering of Flag "AP" ashore with one sound signal means the Warning Signal for the next race shall be made in not less than 60 minutes. This changes Race Signals "AP".

5.3 If possible, any abandonment or postponement ashore will be posted on the Official Notice Board by 0830 and broadcast on the designated VHF fleet radio channels.

6. RACING AREAS AND RENDEZVOUS

6.1 PHRF Course:

(a) Friday & Sunday: Multiple windward/leeward races in harbor. (See Appendix B)

Rendezvous at: 36 56.97 N 76 22.40 W Y N "J" NE Off Craney Island

(b) Saturday: Multiple windward/leeward races in harbor. (See Appendix B)

Rendezvous at: 36 58.13 N 76 22.00 W R N "20" Off Hampton Flats

6.2 One-Design Course:

(a) Friday & Sunday: Multiple windward/leeward races in harbor. (See Appendix C)

Rendezvous at: 36 58.13 N 76 22.00 W R N "20" Off Hampton Flats

(b) Saturday: Multiple windward/leeward races in harbor. (See Appendix C)

Rendezvous at: 36 56.97 N 76 22.40 W Y N "J" NE Off Craney Island

**** Note 1:** PHRF Non-Spin boats will race on the One-Design Course each day.

6.3 Cruising Course:

(a) Saturday & Sunday: One Open Course race in Bay. (See Appendix D)

Rendezvous at: 37 01.98 N 76 15.75 W R "2" Off Buckroe

**** Note 2:** If Cruising Course racing is relocated to harbor Saturday and/or Sunday:

Rendezvous at: 37 00.18 N 76 20.28 W R "4" Hampton River

If racing is in the harbor, use Appendix E.

**** Rendezvous locations are approximate. The RC may locate the starting line within 1.5 nm of the designated rendezvous point without flying Flag L.**

**** Flag "A" displayed with no sound as boats finish means "No more racing today".**

7.0 DAILY SCHEDULES

Thursday, June 2

Bow #s Available	Noon
Check-In/Registration	1600
Welcome Party	1800
Skippers Meeting	1900

Friday, June 3

Weather Briefing	0800
Warning Signal	1000
Post-Race De-Brief	1700
Pizza Night Party	1800
Daily Awards	1900

Saturday, June 4

Weather Briefing	0800
Warning Signal	1000
Post-Race Debrief	1700
Live Music & food	1800
Daily Awards	1930

Sunday, June 5

Weather Briefing	0800
Warning Signal	1000
Post-Race Party	1530 (approx.)
Final Awards	1630 (approx.)

*** On Sunday, no starting sequence will begin after 1415.**

8. CLASSES, FLEET SPLITS, AND ORDER OF STARTS

8.1 Classes, Fleet Splits and Order of Starts (Appendix F) will be officially announced, posted, and distributed at the Thursday Skippers Meeting. Prior to that, preliminary, unofficial information may be posted and updated at HYC and on the event website at www.yachtscoring.com.

8.2 Classes will be organized and, if necessary, sub-divided to produce the best racing.

9. COURSES

9.1 RCs will display course information prior to the warning signal for each race and may broadcast course information via the designated radio channel for that course. Fleets shall sail the course indicated on the course board, unless the course is pre-determined by the S.I.s.

9.2 The bearing and distance shown on the course board is to Mark 1 (Long Weather Mark). Mark 2 (Short Weather Mark) will be set approx. 0.2-0.3 nm to leeward of Mark 1 and on approx. the same bearing.

9.3 Cruising Course courses are as per Appendix D/E.

10. MARKS

10.1 One-Design & PHRF Drop Mark Descriptions - Appendix B (PHRF) and C (One-Design):

Mark 1 (PHRF)	5' Red Tetrahedron
Mark 1 (OD)	5' Orange Tetrahedron
Offset (OD only)	Red Ball
Mark 2 (Both)	3' Orange Tomato
Change Mark (Both)	3' Yellow Tomato
Leeward Gate (Both)	3' Yellow "West Marine" Inflatables
Starting Pin (Both)	3' Green Tomato
Finish Pin (Both)	2' Red Cylinder

10.2 For Cruising Courses: See Appendix D. If racing relocated to harbor, see Appendix E.

11. BOAT CHECK-IN

Before the warning signal for her first race of each day, each boat shall pass by the stern of the RC Signal Boat and hail her name and/or sail number until acknowledged by the RC. (DP) (RC)

12. THE START

12.1 Races will be started using RRS 26 as modified by Instruction 12.2 below.

12.2 Approximately one (1) minute prior to the beginning of a starting sequence, the RC will make an Attention Signal consisting of a series of short sounds. This is not a timed signal.

12.3 For drop mark courses, the starting line will be between the staff displaying an orange flag on the RC Signal Boat at the starboard end of the line and a green tomato at the port end.

12.4 For Cruising Courses, the starting line will be between the staff displaying an orange flag on the RC Signal Boat and the adjacent mark.

13. COLLISION WITH RACE COMMITTEE BOAT

If any boat collides with any Race Committee vessel and causes injury or serious damage on either boat, her penalty shall be to retire. (*DP*)

14. RECALLS

14.1 Individual Recalls will be signaled in accordance with RRS 29.1. Additionally, the RC will attempt to notify premature starters on the designated VHF radio channel for that course.

14.2 Failure of a transmission to be made or received, promptness of the notification, or the position of a boat in the sequence shall not be grounds for redress. This changes RRS 62.1(a).

15. COURSE CHANGE AFTER START

15.1 To change the next leg of the course, the RC will lay a new mark and remove the original mark as soon as practicable.

15.2 If Code Flag "C" is displayed over a pink flag, it indicates that the course change is for the final weather leg.

15.3 Only one Change Mark will be set with any course change. All fleets affected by the change shall round this single Change Mark. No Offset Mark will be set with any Change Mark. The distance to the Change Mark will be approx. 0.1-0.2 nm less than to the original Mark 1.

15.6 Cruising Course courses may not be changed, but they may be shortened.

16. SHORTENING COURSE

Courses may be shortened as per RRS 32.

17. THE FINISH

17.1 For downwind finishes, the finish line will be on the opposite side of the RC Signal Boat from the starting line. The finish line will be between the staff displaying a blue flag on the RC Finish Boat at the starboard end of the line (looking downwind) and a red cylinder at the port end. The finish line will be located approx. 600' to leeward of the leeward mark or gate.

17.2 For upwind finishes, the finish line will be between the staff displaying a blue flag on the RC Finish Boat and Mark 1 or, if the course has been changed, the Change Mark.

17.3 For the Cruising Course, the finish line will be between the staff flying a blue flag on the RC Finish Boat and the adjacent daymark.

17.4 For all courses, each boat is responsible for taking her own finish time and recording the name and/or sail number of the boat finishing directly ahead and astern of her. This information shall be provided to the RC or Judges upon request.

18. THE PENALTY SYSTEM

Appendix V1 (Penalty at the Time of the Incident) applies for all fleets on all courses.

19. CALLING BOATS IN

19.1 In the interest of starting another race or completing the day's racing in a timely fashion, the Race Committee may assign a finish position to any boat(s) still racing, provided their position(s) can be determined in a reasonable manner. Such boat(s) will be scored as finished. This changes RRS 28.1, 35, A3, and A4.

19.2 If another race is to be sailed that day, any boats called in as per S.I. 19.1 shall proceed as quickly as possible to the starting area to facilitate prompt starting of the next race. (DP)

20. TIME LIMITS

20.1 For the One-Design Course, any race in which no boat finishes within two (2) hours after the start of her fleet will be abandoned for that fleet. Also, any boat still racing but not finished within 30 minutes after the first boat in her fleet finishes will be scored TLE (Time Limit Expired). However, for Non-Spinnaker boats, the TLE Time Limit shall be 45 minutes.

This changes RRS 35.

20.2 For the PHRF Course, any race in which no boat finishes within 2 ½ hours after the start of her fleet will be abandoned for that fleet. Also, any boat still racing but not finished within 40 minutes after the first boat in her fleet finishes will be scored TLE (Time Limit Expired).

This changes RRS 35.

20.3 For the Cruising Course, any race in which no boat finishes within 3 ½ hours after the start of her fleet will be abandoned for that fleet.

20.4 For the SBRW Cruising and Multihull fleets, any boat still racing but not finished within 60 minutes after the first boat in her fleet finishes will be scored TLE (Time Limit Expired).

20.5 For the ORC Cruiser fleet, any boat still racing but not finished within 90 minutes after the first boat in her fleet finishes will be scored TLE (Time Limit Expired).

20.6 A boat scored TLE (Time Limit Expired) will, without a hearing, be scored one point more than the number of boats in her fleet who sailed the course properly and finished within the time limit. This changes RRS 35, A4, A5.1, A5.2, and A10.

21. RETIRING

Any boat retiring from a race or leaving the racing area before racing is concluded for the day shall promptly notify the Race Committee for her course, either by hail or radio transmission on the designated VHF radio channel. Such attempt at notification shall be continued until acknowledged by the Race Committee. This procedure is essential to assist the RC in accounting for all boats at the completion of the race. (DP) (RC)

22. SCORING

22.1 All PHRF, SBRW Cruising, and multihull fleets will be scored Time on Distance.

22.2 ORC Cruisers will be scored with the ORC Time on Time All Purpose Triple Number rating.

22.3 Appendix A2.1 is modified as follows:

- a. If fewer than six (6) races are completed, a boat's series score will be the total of her race scores.
- b. If six (6) or more races are completed, a boat's series score will be the total of her scores, excluding her worst score.

22.3 The completion of at least one race will constitute a regatta.

22.4 All scoring and race results will be posted as soon as possible on Yacht Scoring. In addition, printed results will be posted on the window at the NE corner of the HYC lounge.

22.5 Daily trophies will be computed by combining all races for that day into a single score.

22.6 All races will be considered separately for overall Race Week scoring.

23. PROTESTS

23.1 The Judges' Table and Protest Notice Board will be located in the NE corner of the lounge.

23.2 Written protests must be delivered to the Judges' Table within one hour of the RC Signal Boat for that course docking at HYC. Protest forms will be available at the Judges' Table.

23.3 All protest information including time limits, protests filed, and approximate hearing schedules will be posted on the Yacht Scoring Official Notice Board within 15 minutes of the end of protest time. In addition, courtesy written information may be posted on the Protest Board located near the Judges' Table. It is each boat's responsibility to check the Yacht Scoring Official Notice Board to see if she is cited in a protest or may have an interest at a hearing.

23.4 US Sailing Prescriptions to RRS 63.2 will not apply.

23.5 If the RC posts a list of boats scored NSC, OCS, ZFP, or UFD before the Protest Time Limit, a request for redress based on the posted score shall be made no later than fifteen (15) minutes after the Protest Time Limit. This changes RRS 62.2

23.6 On Sunday, a request for redress from a jury decision shall be delivered no later than thirty (30) minutes after the decision was posted. This changes RRS 62.2.

24. RADIOS

24.1 All boats shall carry a working VHF radio. *(DP)*

24.2 Except in an emergency, a boat that is racing shall not make voice or data transmissions and shall not receive voice or data communications that are not available to all boats. This restriction also applies to mobile telephones. *(DP)*

24.3 The Race Committee will not respond to transmissions from competitors except to acknowledge retirements, protests, penalties reported or taken, or requests for emergency assistance.

24.4 Race Committee broadcasts of its intentions, courses to be sailed, flag sequences, postponement updates, etc. are as a courtesy only and in no way relieve competitors of their responsibility to monitor and respond to Race Committee flags and signals.

24.5 Failure of the RC to make a broadcast, the timing of a broadcast, or failure of a boat to hear a broadcast, shall not be grounds for redress. This changes RRS 62.1(a).

24.6 The designated radio frequency for each course is:

- | | |
|-----------------------------|---------------|
| a. One-Design Course | VHF-71 |
| b. PHRF Course | VHF-72 |
| c. Cruising Course | VHF-73 |

25. SAFETY

25.1 A boat shall not exercise right of way over, cross in close proximity to, or interfere in any way with reasonable transit of the race area by military vessels, commercial freighters, tugs and tows, or other commercial vessels that are unable to respond readily. Any boat protested under this rule shall have the burden of proving that she did not interfere with the restricted vessel.

25.2 Protests of violations of this rule may be filed by a competitor as per RRS 60.1(a)) or by the Race Committee as per RRS 60.2(a).

25.3 In addition, the Race Committee, Protest Committee, or Organizing Authority may protest as a direct result of a report received from an offended vessel and/or local port authority.

25.4 If a boat without way in a ship channel infringes RRS 42.1 by using her engine to clear the channel, she shall not improve her position in the race but may continue racing. Immediately upon finishing, she shall inform the Race Committee in writing of the incident.

25.5 RRS 40 (Personal Buoyancy) is changed to read, "It shall be the individual responsibility of each competitor to wear adequate personal buoyancy when conditions warrant."

26. AWARDS PARTIES EACH EVENING

26.1 On Friday, Saturday, and Sunday:

- a. Daily awards are presented to the top three (3) boats on each circle
- b. A "Boat of the Day" Flag is presented to the outstanding boat on each circle

26.2 In addition, on Sunday:

- a. Overall Awards are presented to the top three (3) boats on each circle
- b. The Black Seal Cup is awarded for the overall Boat of the Regatta

26.3 SBRW Beer Raffles are held each day as awards are presented. Bow numbers are drawn and nice prizes are presented to the winning boats. You must be present to win.

26.4 Food, beer, and rum drinks are available at every Awards Party.

27. MEDIA RIGHTS

By their entry, competitors give absolute right and permission for any photograph or video footage of themselves or the boat they are sailing to be published in any media the regatta organizers see fit.

28. DISCLAIMER OF LIABILITY

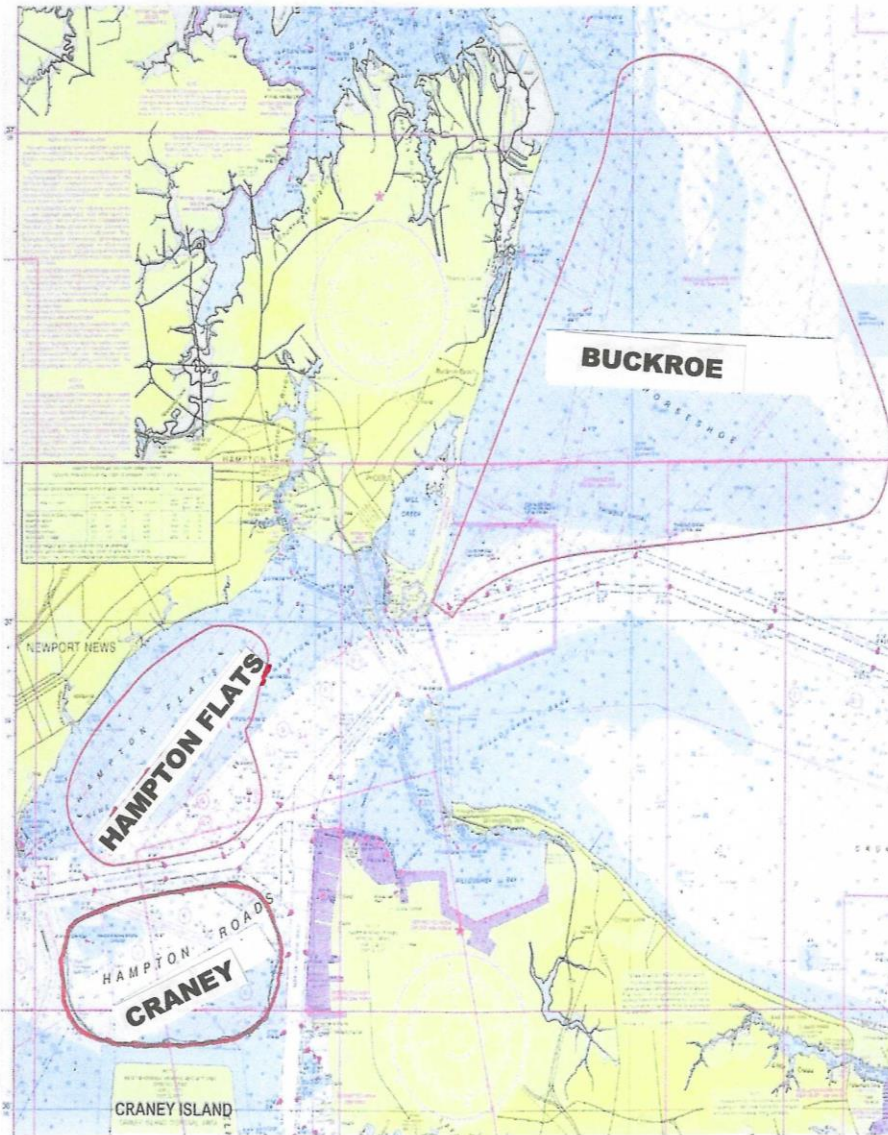
28.1 Competitors participate in the regatta entirely at their own risk. See Rule 3, Decision to Race. The organizing authority will not accept any liability for material damage or personal injury or death sustained in conjunction with or prior to, during, or after the regatta.

28.2 It is the sole responsibility of the Skipper to ensure the boat complies with all class rules and that the boat is sound, seaworthy, and manned by a competent crew of appropriate number.

29. REGATTA CONTACTS AND OFFICIALS:

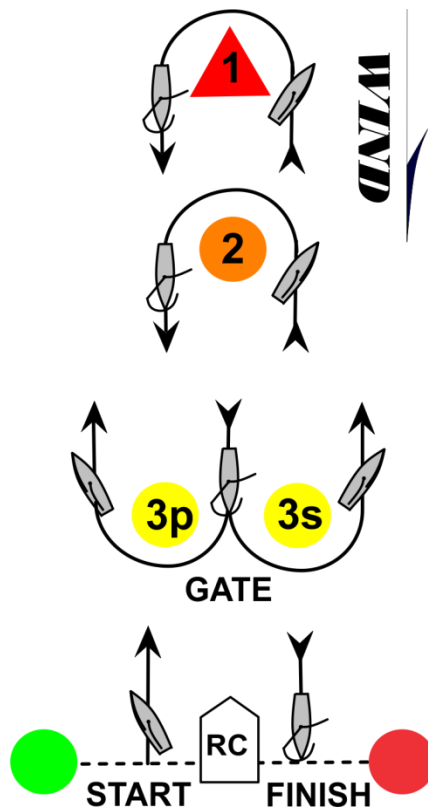
Regatta Chairman	=	Jack Pope
Registration & Info	=	Lin McCarthy (757) 850-4225 mcbear@earthlink.net
Principal Race Officer	=	John McCarthy
One-Design Course	=	Brian Deibler
Cruising/Multihull	=	Bob Magoon
Official Scorer	=	Leanne Cranfill
Chief Judge	=	Jerry Thompson

APPENDIX A – RACING AREAS



FRIDAY	PHRF OD	CRANEY HAMPTON FLATS
SATURDAY	OD PHRF CRU & Multi	CRANEY HAMPTON FLATS BUCKROE
SUNDAY	PHRF OD CRU & Multi	CRANEY HAMPTON FLATS BUCKROE

APPENDIX B
PHRF COURSE



*** Course Designations:**

Course X = Start - Mark 1 - Gate - Mark 1 - Gate - Mark 2 - Finish (Downwind)

Course A = Start - Mark 1 - Gate - Mark 1 - Finish (Downwind)

Course B = Start - Mark 1 - Gate - Mark 2 - Finish (Downwind)

Course C = Start - Mark 2 - Gate - Mark 2 - Finish (Downwind)

Course W = Start - Mark 1 - Gate - Mark 1 - Gate - Finish (Upwind)

Course Z = Start - Mark 1 - Gate - Finish (Upwind)

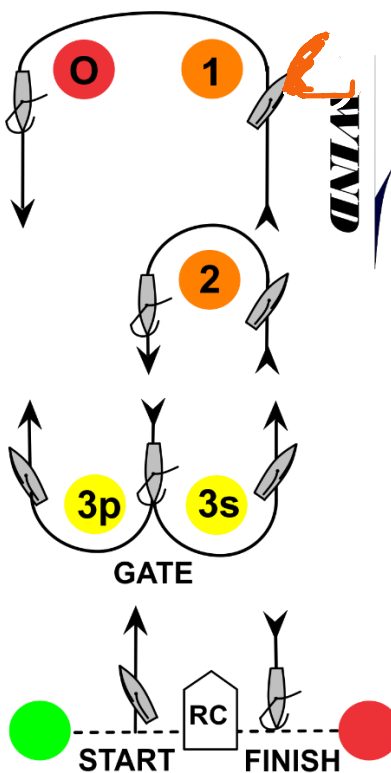
*** Flag "C" displayed over **PINK** flag indicates the course change is for final weather leg only.**

*** All marks, except the gate, shall be left to PORT.**

*** If only one gate mark is present, boats shall round it to PORT.**

*** The angle of the gate may be adjusted at any time without signal.**

APPENDIX C
ONE-DESIGN COURSE



*** Course Designations:**

Course A = Start - Mark 1 - Offset - Gate - Mark 1 - Offset - Finish (Downwind)

Course B = Start - Mark 1 - Offset - Gate - Mark 2 - Finish (Downwind)

Course C = Start - Mark 2 - Gate - Mark 2 - Finish (Downwind)

Course W = Start - Mark 1 - Offset - Gate - Finish (Upwind)

Course Z = Start - Mark 2 - Gate - Finish (Upwind)

*** An Offset Mark will be set approx. 200' to port of Mark 1.**

*** No Offset Mark will be set with Mark 2 or with any Change Mark.**

*** All marks, except the gate, shall be left to PORT.**

*** If only one gate mark is present, round it to PORT.**

*** The angle of the gate may be adjusted at any time without signal.**

APPENDIX D

CRUISING COURSE – 2022

(Page 1 of 2)

MARK DESCRIPTIONS AND LOCATIONS

Start/Finish Mark =	Day Beacon R "2" (Off Buckroe)	37 01.98 N	76 15.75 W
Mark "X"	Fl G 2.5s "3" (Salt Ponds Entrance)	37 03.23 N	76 15.65 W
Mark "M"	Fl 10s 55ft 19M HORN (Thimble Shoal Light)	37 00.87 N	76 14.40 W
Mark "Z"	Oc 4s 58ft (Tall Navy Range Light)	37 01.03 N	76 16.67 W
Mark "V"	Fl G 4s "1 BR" (Back River Entrance)	37 05.62 N	76 15.07 W

SATURDAY COURSES

**** If White Flag flying at stern of RC Boat before race:**

Cruising A, ORC Cruisers, and Multihulls will sail:

Start – V (Star) – M (Star) – Z (Star) – Finish (11.5 nm)

Cruising B will sail:

Start – X (Star) – M (Star) – Z (Star) – Finish (6.9 nm)

**** If Pink Flag flying at stern of RC Boat before race:**

Cruising A, ORC Cruisers, and Multihulls will sail:

Start – X (Star) – M (Star) – Z (Star) – Finish (6.9 nm)

Cruising B will sail:

Start – X (Star) – M (Star) – Finish (5.4 nm)

APPENDIX D (Page 2 of 2)

SUNDAY COURSES

**** If Yellow Flag flying at stern of RC Boat before race:**

Cruising A, ORC Cruisers, and Multihulls will sail:

Start – Z (Port) – M (Port) – V (Port) – Finish (11.4 nm)

Cruising B will sail:

Start – Z (Port) – M (Port) – X (Port) – Finish (6.9 nm)

**** If Black Flag flying at stern of RC Boat before race:**

Cruising A, ORC Cruisers, and Multihulls will sail:

Start – Z (Port) – M (Port) – X (Port) – Finish (6.9 nm)

Cruising B will sail:

Start – Z (Port) – M (Port) – Finish (4.6 nm)

**** One open course race will be run each day.**

**** The colored flag displayed near the stern of the RC Signal Boat before the race, indicates which course the fleets will sail that day.**

**** Time limits for each fleet are shown in Section 20 of the Sailing Instructions.**

**** Lat/Lons are approximate and not intended for navigation.**

**** Radio communications with the RC will be via VHF- 73.**

NOTE: Should racing be relocated to the harbor on Saturday and/or Sunday, racing will be conducted as per Appendix E.

APPENDIX E – CRUISING COURSE IN HARBOR

**** If Cruising Course racing is relocated to the harbor on Saturday and/or Sunday, the following course will be sailed. There will be only one race sailed that day.**

SBRW CRUISING A, ORC Cruisers, and Multihulls will sail the following course:

<u>Marks</u>	<u>Location</u>	<u>Leave to</u>	<u>Lat/Lon</u>	
Start = Day Beacon R "4"	at Mouth of Hampton River		37 00.18 N	76 20.28 W
Day Beacon G "1"	Hampton Flats	PORT	36 59.12 N	76 21.60 W
FI R 4s R "6"	N News Channel	PORT	36 57.60 N	76 21.50 W
R N "14"	Hampton Bar	PORT	36 59.77 N	76 19.40 W
Day Beacon R "18"	Hampton Bar	STAR	36 58.78 N	76 21.07 W
FI R 2.5s 15ft 4M "2"	Hampton Bar	STAR	36 59.03 N	76 21.37 W
Day Beacon R "4"	Mouth of River	FINISH	37 00.18 N	76 20.28 W
Distance = 9.2 nm				

SBRW CRUISING B will sail the following course:

<u>Mark</u>	<u>Location</u>	<u>Leave to</u>	<u>Lat/Lon</u>	
Start = Day Beacon R "4"	at Mouth of Hampton River		36 00.18 N	76 20.28 W
Day Beacon G "1"	Hampton Flats	PORT	36 59.12 N	76 21.60 W
FI R 4s R "6"	N News Channel	PORT	36 57.60 N	76 21.50 W
R N "16"	Hampton Bar	PORT	36 59.27 N	76 20.35 W
Day Beacon R "18"	Hampton Bar	STAR	36 58.78 N	76 21.07 W
FI R 2.5s 15ft 4M "2"	Hampton Bar	STAR	36 59.03 N	76 21.37 W
Day Beacon R "4"	Mouth of River	FINISH	37 00.18 N	76 20.28 W
Distance = 7.5 nm				

**** Lat Lons are approximate and not intended for navigation.**

**** The Race Committee will communicate with the fleet on VHF-73.**

**** Time limits are shown in Section 20 of the Sailing Instructions.**

APPENDIX F

FLEET SPLITS, CLASS FLAGS, & ORDER OF STARTS

PHRF COURSE

<u>Fleet</u>	<u>Ratings</u>	<u>Class Flag (RC Boat)</u>	<u>Class Flag (Backstay)</u>
SUPER A	Under 50	Code Flag "1"	Code Flag "1"
PHRF A1	50-85	Code Flag "9"	Code Flag "9"
PHRF A2	86-99	Yellow Flag	Yellow Ribbon
PHRF B1	100-127	Code Flag "6"	Code Flag "6"
PHRF B2	Over 127	White Flag	White Ribbon

ONE-DESIGN COURSE

<u>Fleet</u>	<u>Ratings</u>	<u>Class Flag (RC Boat)</u>	<u>Class Flag (Backstay)</u>
Viper 640	One Design	Viper Logo	None
J-24	One Design	Green Flag	Green Ribbon
PHRF Non-Spin	All Ratings	Code Flag "5"	Code Flag "5"

**** Note : PHRF Non-Spin will race on the One-Design Course each day.**

CRUISING COURSE

<u>Fleet</u>	<u>Ratings</u>	<u>Class Flag (RC Boat)</u>	<u>Class Flag (Backstay)</u>
ORC Cruiser	All ratings	Green	Green Flag
Cruising A	Under 190	White Flag	White Flag
Cruising B	Over 190	Purple Flag	Purple Ribbon

Note: All boats (except Vipers) shall display the appropriate class flag or ribbon from the backstay. (DP)

Note: For fleets flying ribbons, the appropriate ribbon will be provided to each boat in her Skippers Bag given out at Check-In Thursday.