



Organizing Authority
Ponce Yacht & Fishing Club
Ponce, Puerto Rico
NOVEMBER 5-7, 2021

Sailing Instructions

1. RULES

- 1.1 This Regatta will be governed by the rules as defined in The Racing Rules of Sailing (RRS). To the extent permitted by Part 7 of the RRS, specific provisions of the RRS may be modified, altered or made inoperative by the Notice of Race (NOR) or the Sailing Instructions (SI).
- 1.2 Rules of participating ONE DESIGN classes will apply, except as modified, altered or made inoperative by the NOR or the SI, to the extent permitted by such class rules.
- 1.3 Boats in CRUISING CLASS may sail with two headsails and no spinnaker. The spinnaker pole in CRUISING CLASS is allowed. Boats in Jib and Main CLASS have to sail with one headsail only. The use of spinnaker pole is allowed in Jib & Main.
- 1.4 Genoas more than 155% will not be allowed for all Cruising and Jib & Main.
- 1.5 All boats shall have a Chart of the Ponce bay area and Approaches chart.
- 1.6 The regatta will use one Handicap system. The CSA handicap system will be used .
- 1.7 The PYFC has the following Rules regarding COVID-19; Please follow them.
- 1.8 A) The Security guard at the gate has instructions to require the following from anybody that wants access to the club. Vaccination Certificate or Vacu ID or a NEGATIVE lab report not more than 72 hrs old.
- 1.9 B) Use of a face mask at all times is to be observed in any area of the Club and
- 1.10 3) Keep your social distance from other people.
- 1.11 If there is a conflict between languages the English text will take precedence.

2. NOTICE TO COMPETITORS

- 2.1 Notice to competitors will be posted on the Official Notice Board located at the Trophy Exhibit in the Marlin Room.

3. CHANGES IN SAILING INSTRUCTIONS

- 3.1 Any changes to the Sailing Instructions will be posted before 0800 hours of the day it will take effect, except that any changes to the schedule will be posted by 2000 hours on the day before it will take effect.
- 3.2 Changes to the SI's Courses can be done in the water advising the competitors by raising "L" flag with its appropriate sound signal.

4. SIGNALS MADE ASHORE

- 4.1 Signals made ashore will be displayed on two (2) flag poles situated at the Marina "B" entrance.
- 4.2 If the AP flag is displayed ashore, when it is dropped, no race will begin for at least 30 minutes.

5. SCHEDULE OF RACES

- 5.1 Saturday Nov 6 and Sunday Nov 7, 2021.
- 5.2 The warning signal for the first race every racing day is scheduled for 1100 hours.
- 5.3 No warning signal will be hoisted after 1600 hours on Saturday; no warning signal will be hoisted after 1400 on Sunday.
- 5.4 Multiple races will be run each day as time and weather conditions permit it. The Race Committee will endeavor to schedule back-to-back races each day.
- 5.5 Multiple classes may be started at the same time.

6. CLASS FLAG

6.1 The following class flag are designated for the following classes:

Race Committee Signals Vessel		
Num.	Class	Class Flag
1	Jib & Main CSA	White
2	Cruising	Green
3	IC24	Class Flag
4	Hobie 16	Class Flag
5	Nativos 17'	Class Flag
6		
7		
8		
9		
10		

- 6.2 Class colors will be announced at the skipper meeting for each participating class, except for One Design Classes.
- 6.3 The decision as to which class a boat races in rests entirely to the Regatta Race Committee, whose decision will be final.
- 6.4 In order to constitute a class, a minimum of three (3) boats will be required.

7. RACING AREA

- 7.1 The racing area for the first race of each day will be designated by the Race Committee each day by 0900 AST and announced by displaying from the official flagpoles numeral Pennants 1, 2 or 3 for the designation of course area 1 course area 2 and course area 3 respectively.
- 7.2 Changes to the racing area on the water during the day will be announced by displaying the appropriate numeral Pennant on the Race Committee signal vessel, over the RC flag.

8. THE COURSES

- 8.1 Although the RC will attempt to set courses that comply with these illustrations, failure to duplicate them precisely shall not be grounds for protest or redress.
- 8.2 The course number designation for the course to be sailed by each class will be posted no later than four (4) minutes before each start for that class by the Race Committee Signals Vessel displaying the designated numeral pennant.
- 8.3 The courses in Appendix C showing Mark "G" is a leeward mark in the form of a gate. It shall be passed in accordance to rule 28.2 (c). In case there is only one mark it shall be left to Port
- 8.4 Marks will be left to Port unless specified as (STBD) for Starboard.

9. MARKS

- 9.1 All the marks for the race series are as described in APPENDIX B.
- 9.2 The starting and finishing marks will be the RCSV with a staff displaying an orange flag and a yellow or orange mark.
- 9.3 Marks are to be left to PORT unless specified with (STBD), for Starboard.

10. THE STARTS

- 10.1 The starting line will be between a staff displaying an orange flag on the starboard end of the starting line and the port end starting mark, which can be an inflatable mark or a pin boat.
- 10.2 Boats whose warning signal has not been made shall avoid the starting area.
- 10.3 To alert boats that a race or sequence of races will start soon, the orange flag on the staff designating the starting line will be displayed (with one sound signal) for at least one minute before a warning signal is displayed.
- 10.4 The Start Line is an obstruction while racing.
- 10.5 A boat starting later than four minutes after her starting signal will be scored Did Not Start without a hearing. This changes rules A4 and A5
- 10.6 RC may start different classes at the same time.

11. THE FINISH

- 11.1 For all courses that finish on the RCSV, the finish line will be between a staff displaying a blue flag or shape on the finishing mark at the starboard end and the port finishing mark.
- 11.2 For all the courses that finish inside the P.Y.F.C. Marina Area (FINISH CLUB), the finish line will be the western end of the Tuna dock and the P.Y.F.C. West side of the Fuel Dock Area.
- 11.3 Finish Line will be an obstruction while racing.
- 11.4 Boats that have already finished shall avoid the finishing area. Failure to comply might result in a penalty.

12. CHANGE OF COURSES AFTER THE START

- 12.1 A change of course after the start will be signaled before the leading boat in that class has begun the leg, although the new mark may not be in position. Any mark to be rounded after rounding the new mark may be relocated to maintain the original course configuration, except for all courses that are configured with permanent buoys.

13. TIME LIMIT.

- 13.1 For all Classes.
 - 13.1.1 Boats failing to finish within the Time Limit after the first boat of their class sails the course and finishes will be scored Did Not Finish without a hearing. This changes rule 35, A4 and A5.
 - 13.1.2 Time limits in minutes after the first boat in each class finishes are as follows:

Class	Time Limits
IC 24	10 min
Hobie 16	10 min
N-17	10 min

14. PROTEST AND REQUEST FOR REDRESS

- 14.1 Protest shall be written on forms available beside the Trophy Exhibit at the Marlin Room.
- 14.2 In addition to the requirements of RRS 61, protesting yacht shall inform the RCSV or RC Finish at the P.Y.F.C. of their intention to file a protest, as soon as reasonably possible after finishing the race. This changes rule 61 RRS.
- 14.3 The Protest Time Limit for is sixty (60) minutes after the RCSV has docked.
- 14.4 A notice will be posted on the Official Notice Board as soon as possible indicating the time when Protest Time started and the time when it will end for each course and class.
- 14.5 Protest notices will be posted on the Official Notice Board as soon as possible to inform competitors of hearings in which they are parties or named as witnesses. The inclusion of a sail number of a boat on the Official Notice Board shall be considered as notice that a representative should attend a hearing as indicated.
- 14.6 Protest will be heard in approximately the order they were received, beginning as soon as practical.

14.7 On the last scheduled day of racing a request for redress based on a protest committee decision shall be delivered no later than 30 minutes after the decision was posted. This changes rule 62.2.

14.8 Protest Fee \$ 30.00. Reopening \$40.00

15. SCORING

15.1 A minimum of one (1) race will constitute a regatta.

15.1.1 When five (5) or fewer races have been completed, a boat's series score will be the total of her race scores.

15.1.2 When from six (6) to ten (10) races have been completed, a boat's series score will be the total of her race scores excluding her (1) worst score.

15.1.3 When from eleven (11) to fifteen (15) races have been completed, a boat's series score will be the total of her race scores excluding her worst two (2) scores.

15.2 Scoring system will be the Low Scoring System (A4).

16. RADIO COMMUNICATION

16.1 All boats shall carry a VHF radio. Except Hobie Cats. The official radio communication is channel 6.

16.2 The Race Committee Signal Boat will endeavor to call by radio boats that are OCS. Failure to hail OCS or sequence in which they are called are NOT grounds for redress. This changes rule 62.1 RRS.

17. SAFETY

17.1 Safety requirements shall be observed in compliance with the USCG regulation and as written in these sailing Instructions. Failure to comply might result in a penalty.

17.2 In addition to the USCG Regulations all boats shall comply with Appendix D.

18. PRIZES

18.1 Class trophies will be awarded to the first three boats in each class for Discover the Caribbean.

18.2 The award ceremony will be held on Sunday, Nov. 7, 2021. at Ponce Yacht and Fishing Club, Marlin Room beginning at 1630 hours.

19. DISCLAIMER OF LIABILITY

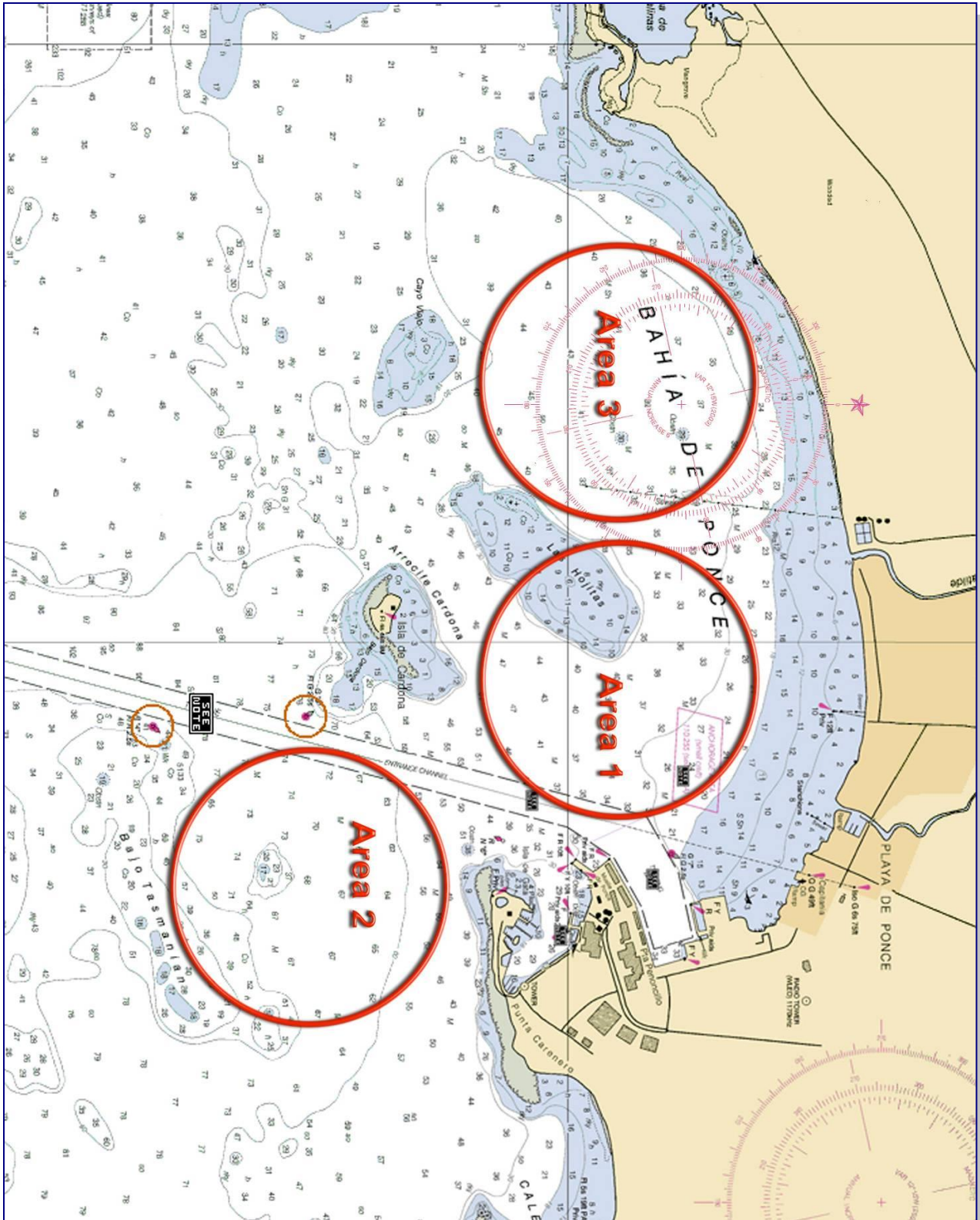
Competitors participating in the regatta are entirely at their own risk. Competitors agree to be bound by the rules as defined in The Racing Rules of Sailing (RRS), by Sailing Instruction (SI), the Notice of Race (NOR) and any additional information to the SI or to the NOR. Competitors agree to take any responsibility for nautical qualities of their yacht, the rigging, the crew ability and safety requirements. Competitors also agree to take any and all responsibility for damages caused to third persons (bodily injury included but not limited thereto) or their belongings, to themselves (bodily injury included but not limited thereto) or to their belongings, ashore and at sea as a consequence of their participation in the regatta, relieving of any responsibility The Ponce Yacht

and Fishing Club and all his members, the sponsors and all persons involved in the organization under whatever qualification and to accept full responsibility for their behavior and dress of yacht's crew, representative and guest. Competitors are to be acquainted with RRS Part 1 Fundamental Rule 4: "The responsibility for a boat's decision to participate in a race or to continue racing is hers alone". In any case, competitors agree that The Ponce Yacht and Fishing Club Organization, the sponsors, and their agents, have no responsibility for loss of life or injury to members or others or for the loss of, or damage to any vessel or property. As part of the registration process, each individual participating crewmember will be required to sign a declaration accepting this disclaimer of liability.

20. RIGHT TO USE AND LIKENESS

- 20.1 By participating in the Discover the Caribbean Regatta a competitor automatically grants the Discover the Caribbean Regatta Organizing Committee and its sponsors the right in perpetuity to make, use and show, from time to time at their discretion, any motion pictures and live, taped or filmed television and other reproductions of the competitor during the period of the Discover the Caribbean Regatta, without compensation.

Appendix A



Appendix B

Courses Discover 2021

Inflatable Marks	
Start-Finish	Orange 4' Teardrop
M1	Yellow 5' Tear drop
M2	Orange 5' Tetrahedron
M3S/P	Yellow 4' Teardrop
L	Orange 5' Tetrahedron
Navigational Buoys	
"G"5	Green buoy at the entrance Channel Ponce Harbor
"R"6	Red Buoy at the entrance Channel of Ponce Harbor
"R"4	Red bouv at the entrance Channel of Ponce Harbor

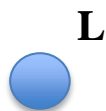
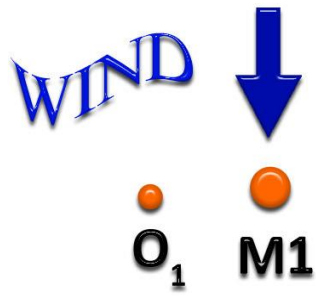
CRUISING/J&M/HOBIE CATS

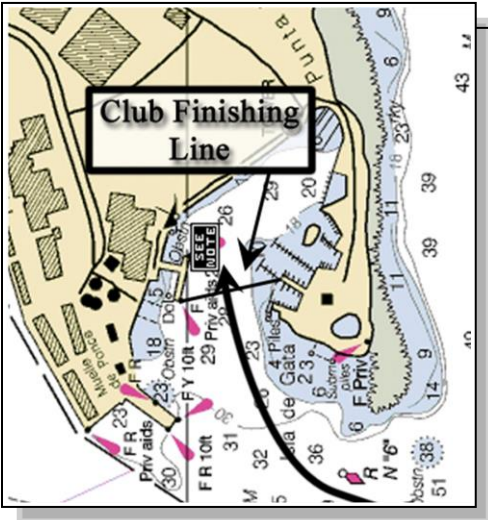
1. S-M1-F
2. S-M1-GATE-M1-F
3. S-M1-L-M1-F
4. S-R6(STBD)-R4(STBD)-ORANGE 5' CYLINDRICAL WEST OF CARDONA(STBD)-M1-F
5. S-R6(STBD)-R4(STBD)-ORANGE 5' CYLINDRICAL WEST OF CARDONA(STBD)-R6-F(CLUB)
6. S-M1-L1-F(CLUB)
7. S-R6(STBD)-CAJA DE MUERTOS (STBD)-R6(STBD)-F(CLUB)

IC24/NATIVOS 17

1. S-M2-F
2. S-M2-G-M2-F
3. S-M2-L1-M2-F
4. S-R6(STBD)-G5(STBD)-ORANGE 5' CYLINDRICAL WEST OF CARDONA(STBD)-M2-F
5. S-R6(STBD)-G5(STBD)-ORANGE 5' CYLINDRICAL WEST OF CARDONA(STBD)-R6(STBD)-F(CLUB)
6. S-M2-L1-F(CLUB)

Appendix C





Appendix D

Safety Requirements

1. Hatches, companionways and ports to be watertight. Cockpit companionways to be capable of being blocked off to main deck level. These companionways shall continue to give access to the interior of the hull.
2. Cockpits to be self-bailing and to be fitted with adequate drains.
3. Lifelines, bow and stern pulpits not less than 18" above deck level, throughout their length (Category 2 – lifeline may be split at the bow to facilitate jib sheeting).
4. Fire extinguisher (charged and in date – one accessible from on-deck).
5. One anchor with adequate anchor line. Anchors and cables shall be adequate to hold the vessel in unprotected anchorages in conditions, which may be expected to be found in the area. No part of an anchor may overhang the bow of the boat while racing. Anchor must be adequately stowed.
6. Adequate First Aid Kit.
7. Compass properly installed and corrected.
8. Charts covering the racing course.
9. Personal Flotation Device (PFD) for each person on board.
10. In addition, all yachts are required to carry on board Working VHF radio or cellular telephone.