



2021 Classic Wooden Boat Race Sunday, 12 September 2021

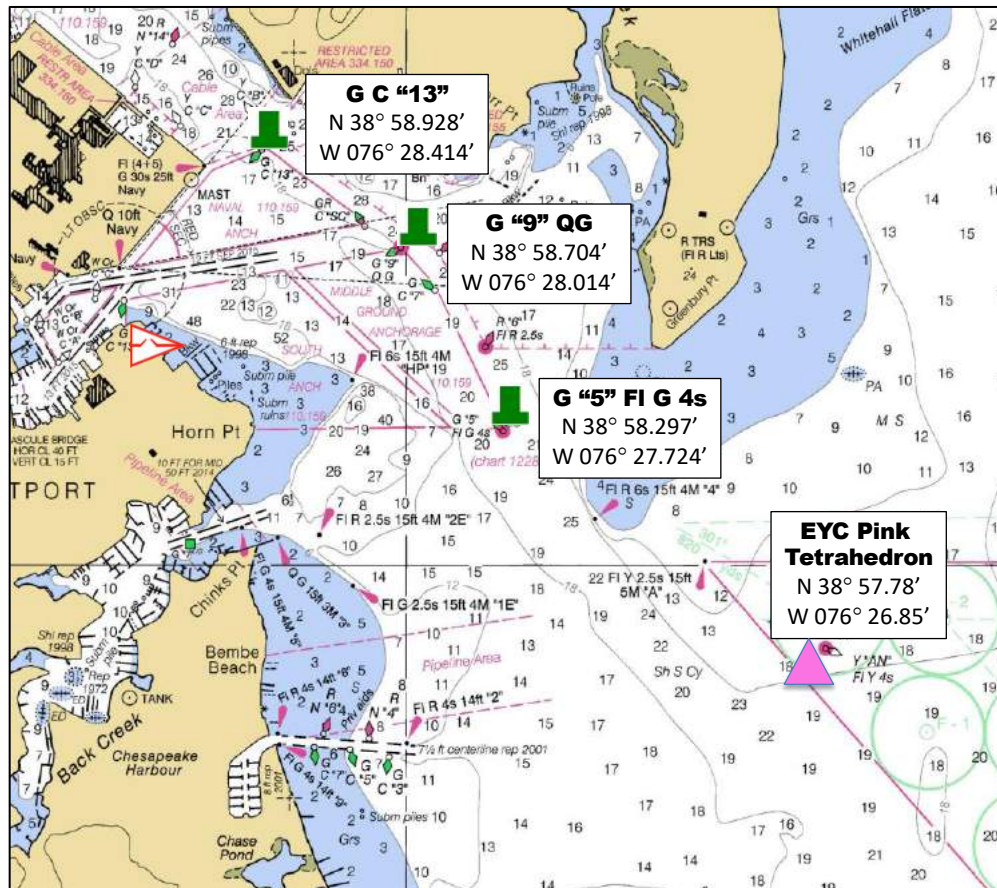
Sailing Instructions (SIs) Amendment No. 2

The Race Committee has revised the Marks of the Course. Y "AN" FI Y 4s is replaced with an inflatable pink tetrahedron. Delete 9.1 and replace with the following:

- 9.1 The marks that may be used are listed in the table below. The chartlet in Attachment 1 shows the approximate locations of the marks.

G "5" FI G 4s	G "9" QG	G C "13"	EYC Pink Tetrahedron
N 38° 58.297'	N 38° 58.704'	N 38° 58.928'	N 38° 57.78'
W 076° 27.724'	W 076° 28.014'	W 076° 28.414'	W 076° 26.85'

Delete the chartlet in Attachment 1 and replace with the following:



Classic Wooden Sailboat Race Marks