



THISTLE CLASS ASSOCIATION (TCA)
2017 ATLANTIC COAST CHAMPIONSHIP

July 17, 2021 – July 18, 2021
CEDAR POINT YACHT CLUB (CPYC), Westport, CT
SAILING INSTRUCTIONS (SI)



1. Rules

- 1.1. All races shall be governed by the rules as defined in The Racing Rules of Sailing for 2021-2024., class rules, the Notice of Race, and these Sailing Instructions. In case of conflict between the Notice of Race and these Sailing Instructions, the Sailing Instructions shall apply.

2. Notices to Competitors

- 2.1. Notices to competitors shall be posted on the official notice board, located on the south side of the yacht club.
- 2.2. Competitors may receive notices from the RC concerning safety, notice of on course side (OCS) boats, and general information to assist in the management of the event by hail and/or VHF channel 77.

3. Changes to Sailing Instructions

- 3.1. Any written change to these sailing instructions shall be posted on the official notice board (located on the South wall of the clubhouse) and signaled by displaying flag Lima at least 90 minutes before the first scheduled warning signal on the day it will take effect.

4. Signals Made Ashore

- 4.1. Signals made ashore shall be displayed on the CPYC flagpole.
- 4.2. When postponement flag AP is displayed ashore, the stated time interval from its removal to the warning signal '1 minute' is replaced by 'not less than 60 minutes'. This changes Race Signal AP.

5. Schedule of Races and Starting Times

- 5.1. The schedule of races and the time of the first warning signal are published in the Notice of Race.
- 5.2. No Warning Signal will be made after 1300 on Sunday.
- 5.3. Racing on Saturday will not be *abandoned* prior to 1530 except in cases of extreme weather.
- 5.4. Class flags will designate the starts of different fleets.

6. Check-In

- 6.1. Prior to the warning signal for the first race of the day in which it intends to compete, each boat shall check in with the Race Committee (RC) by passing the stern of the RC vessel, leaving the race committee signal vessel to its starboard side, hail its sail number and be acknowledged by the RC. Any boat that has not checked in will be scored DNC. This changes RRS 63.1, A4 and A5.

7. Racing Area

- 7.1. The racing area will be southeast of CPYC, starting in the vicinity of the fixed racing marks described.

8. Courses

- 8.1. Courses may be displayed on a RC signal vessel using letters, posted vertically, to designate the marks, and may be announced on VHF channel 77, before the warning signal. Boats shall pass each mark in descending order leaving them on the same side as the starting mark S and then finish at X.
- 8.2. No later than the warning signal for each class, the Race Committee signal vessel may display the approximate compass bearing and distance to the first mark.
- 8.3. Course diagrams and examples are illustrated on the last page of these SIs.
- 8.4. There may be an offset mark at the weather mark. It will not be posted as part of the course.

9. Marks

- 9.1. **CPYC Movable marks**, as described, that may be used:

“W” = Orange windward turning mark, if an offset is used it will be an orange ball.

“T” = Orange wing turning mark, location forms triangle between a windward and a leeward mark.

“L” = Orange leeward turning mark, location may be upwind or downwind of signal boat

“S” = Orange starting mark.

“X” = Finishing mark, located on side of the signal vessel opposite the starting mark.

9.2 **CPYC Fixed marks**, as shown on Course addendum, that may be used.

“C” = White shape, orange bands (Lat N 041 05.924' / Lon W 073 20.667')

“D” = White shape, orange bands (Lat N 041 05.557' / Lon W 073 21.002')

“E” = White shape, orange bands (Lat N 041 05.302' / Lon W 073 20.379')

“G” = White shape, orange bands (Lat N 041 05.380' / Lon W 073 19.980')

“H” = White shape, orange bands (Lat N 041 05.508' / Lon W 073 18.755')

“I” = White shape, orange bands (Lat N 041 06.530' / Lon W 073 19.040')

“J” = White shape, orange bands (Lat N 041 05.907' / Lon W 073 18.418')

“K” = Orange shape (Lat N 041 06.483' / Lon W 073 18.477')

“M” = White shape, orange bands (Lat N 041 06.416' / Lon W 073 19.569')

“N” = White shape, orange bands (Lat N 041 06.232' / Lon W 073 20.159')

10. Areas That Are Obstructions

10.1. A boat that is racing shall not cross the start and/or finish line except when preparing to start, starting, or finishing. Except at those times, the start and/or finish line, including the marks bounding them, are designated as a single obstruction.

10.2. Several of CPYC fixed racing and Government marks are located near shore or in shallow water. Sailors are advised to be aware of their location on the race course, and consult current local charts for hazardous areas. Government Mark G “1” shall be passed on the channel side.

11. The Start

11.1. The starting line shall be between an orange flag on the race committee signal vessel and the starting marks.

11.2. A boat starting later than four minutes after her starting signal shall be scored Did Not Start (DNS) without a hearing. This changes RRS 62, A4 and A5.

11.3. Boats whose warning signal has not been made shall keep clear of the starting area during the starting sequence for other fleets.

11.4. Failure to hear any hail or sound signal shall not be grounds for redress. This changes RRS 62.1.

12. Changes

12.1. To change the next leg of the course, the race committee will lay a new green mark (or move the finish line) and remove the original mark as soon as practicable. There will be no offset mark accompanying a changed (green) mark. When in a subsequent change a new mark is replaced, it will be replaced by an original mark. When changing or shortening the course, one or more class flags displayed with the code flag means the course is changed or shortened only for the class(es) so designated. If no class flags are displayed, the change or shortening applies to all classes for which the nearby mark is a mark of the course.

12.2. If the RC changes the next leg of a course that is defined in part or whole by fixed marks, it shall indicate the letter of the next mark by visual signal, by hail, and/or by VHF radio transmission on channel 77. If the new mark is a moveable mark, the RC shall also comply with Rule 33. If the new mark is a fixed mark, RC shall also display code flag C with repeated sound signals. This changes RRS 33.

13. The Finish

13.1. The finishing line shall be between a blue flag on the RC signal vessel and the finishing mark.

14. Time Limits

14.1. The time limit for a race shall be 1.5 hours from its starting signal. If no boat completes the race within the 1.5 hour time limit, the race shall be abandoned.

14.2. If at least one boat sails the course and finishes within the time limit, then boats still racing 30 minutes after the first boat has finished shall be recorded as Time Limit Expired (TLE). TLE results are scored points equal to two more than the last finisher but not worse than Did Not Finish (DNF). This changes RRS 35, 63.1, A4 and A5.

15. Protests and Requests for Redress

15.1. A boat intending to protest shall follow the requirements of rule 61, and shall notify RC either upon finishing or at the first reasonable opportunity if unable to finish. This changes RRS 61.1(a). Written protests shall be delivered to the Principal Race Officer or placed in the Protest Form Drop-Box in the

Governor's Room not later than one hour after the race committee signal vessel docks. The time of docking shall be posted on the official notice board. Protest forms are available at the clubhouse.

15.2. Appendix T (Arbitration) will apply.

15.3. Notices shall be posted on the official notice board within 15 minutes after the end of the protest time limit to inform competitors of hearings in which they are parties. Protest hearings shall be held in the Governors' Room.

16. Scoring

16.1. Scoring will be the low point system.

16.2. One race must be completed to constitute a regatta.

16.3. All races will be counted. This changes RRS A 2.1.

16.4. The RC may, at its discretion, assign a finishing position to boats still racing that have not finished. This changes RRS A3, A4, A5, and 28.1.

17. Safety

17.1. A boat that retires from a race shall notify the RC as soon as possible by sailing by the Signal Boat or mark boats, or hailing the RC on VHF channel 77.

17.2. A boat that retires and does not notify the RC will be scored DSQ. This changes RRS 63.1, A4 and A5.

18. Replacement of Crew or Equipment

18.1. Substitution of the number of crew(s) will not be permitted. No substitution of skipper is permitted.

18.2. Substitution of damaged or lost equipment shall not be allowed unless authorized by the RC. Request for substitution shall be made to the RC at the first reasonable opportunity.

19. Equipment and Measurement Checks

19.1. A boat or equipment may be inspected at any time for compliance with the RRS.

20. Radio Communications

20.1. Competitors may receive VHF radio transmissions from the Race Committee on channel 77 concerning safety, notice of on course side (OCS) boats and general information to assist in the management of the event.

21. Awards

21.1. The Atlantic Coast Championship and its perpetual trophy will be awarded to the winning boat.

21.2. Boats finishing 2 through 5 will be awarded prizes.

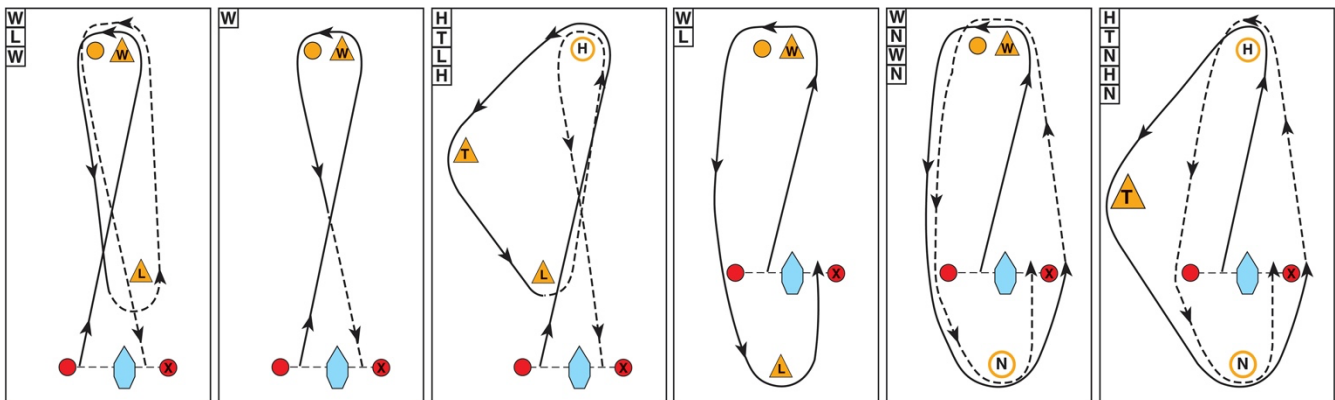
21.3. Other awards will be made at the discretion of the Organizing Authority

22. Disclaimer of Liability

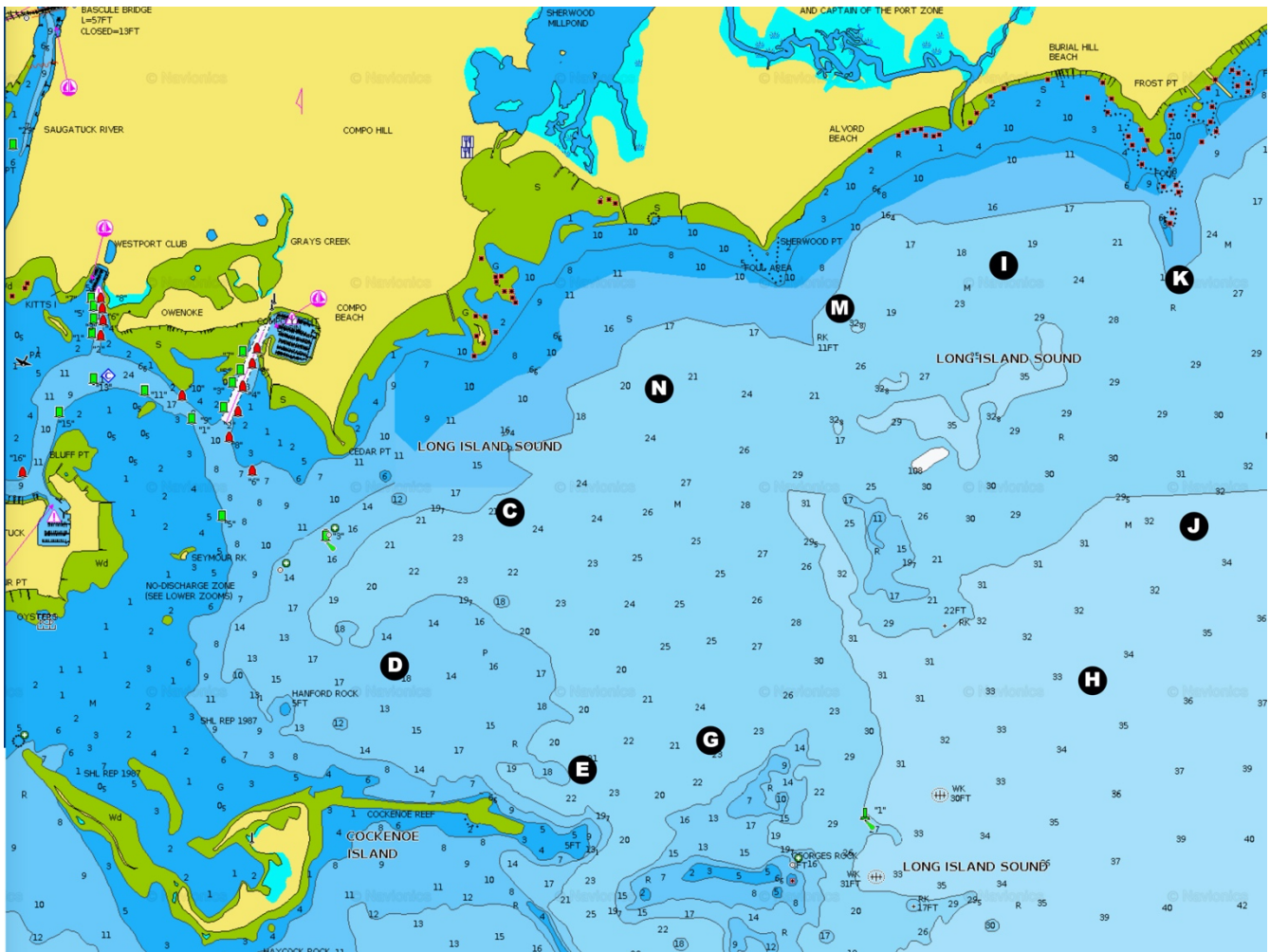
22.1. Competitors participate in the regatta entirely at their own risk. See RRS 4, Decision to Race. The organizing authority shall not accept any liability for material damage or personal injury or death sustained in conjunction with or prior to, during, or after the regatta.

23. Course Examples:

23.1. Marks may be movable or fixed as noted in SI 9.1 and SI 9.2



24. Fixed Marks
 24.1. As noted in SI 9.2



Note: approximate bearings between marks as reported magnetic.

	C	D	E	G	H	I	J	K	M	N
C	—	231/0.5	174/0.7	152/0.7	120/1.5	077/1.3	104/1.7	085/1.7	072/0.9	063/0.5
D	051/0.5	—	132/0.5	117/0.8	105/1.7	070/1.8	094/2.0	078/2.1	065/1.4	057/0.9
E	354/0.7	312/0.5	—	089/0.3	094/1.2	053/1.6	081/1.6	064/1.9	042/1.3	024/0.9
G	332/0.7	297/0.8	269/0.3	—	096/0.9	045/1.4	080/1.3	059/1.6	030/1.1	005/0.9
H	300/1.5	285/1.7	274/1.2	276/0.9	—	002/1.0	046/0.5	026/1.0	340/1.1	318/1.3
I	257/1.3	250/1.8	233/1.6	225/1.4	182/1.0	—	157/0.8	110/0.4	268/0.4	264/0.9
J	284/1.7	274/2.0	261/1.6	260/1.3	226/0.5	337/0.8	—	009/0.6	314/1.0	298/1.4
K	265/1.7	258/2.1	244/1.9	239/1.6	206/1.0	290/0.4	189/0.6	—	279/0.8	273/1.3
M	252/0.9	245/1.4	222/1.3	210/1.1	160/1.1	088/0.4	134/1.0	099/0.8	—	261/0.5
N	243/0.5	237/0.9	204/0.9	185/0.9	138/1.3	084/0.9	118/1.4	093/1.3	081/0.5	—