



2021 ORC East Coast Championship

Newport, Rhode Island
July 16-18, 2021

SAILING INSTRUCTIONS

1 RULES

- 1.1 This regatta will be governed by the rules as defined in the *Racing Rules of Sailing* (RRS), including the current ORC rules.
- 1.2 All competing boats shall carry a handheld VHF radio for safety purposes and race committee communication.
- 1.3 If there is a conflict between rules or regulations, other than RRS, the sailing instructions will prevail. This changes RRS 63.7.
- 1.4 The US Sailing prescription to rule 63.2 is deleted.
- 1.5 ORC Rule 200.1 is changes as follows:
 - i. One additional crew under the age of 16 is permitted and shall not count against the crew or weight limit.
 - ii. Weighing in is not required. However, the skipper of a boat that is later protested for exceeding the maximum crew weights cited on the boat's certificate shall make all crew weights available prior to the protest hearing and will be required to certify to the accuracy of the data.
- 1.6 ORC Rule 206 is changed as follows: During the regatta, the sails carried (including mainsails and spinnakers) may vary from day to day but shall remain the same for each individual race day, including days with multiple races, even in the case of damage to sails. The race day begins when the boat leaves the dock or its mooring for the race course.

2 COMMUNICATION: NOTICES, ANNOUNCEMENTS, VHF CHANNELS

- 2.1 Notices to competitors will be posted on the Official Notice Board located at the New York Yacht Club Sailing Center and may also be posted on the event website at <https://www.nyyc.org/web/pages/2021-orc-event>.
- 2.2 Any change to the sailing instructions will be posted before 0900 hours on the day it will take effect, except that any change to the schedule of races will be posted by 2000 hours on the day before it will take effect.
- 2.3 In addition to the signals made in SI 3.3, the Race Committee will confirm the rendezvous locations as described in SI 6 at 0900 over VHF Channel 72. The failure to make this announcement or for a boat to hear this announcement will not be grounds for a boat to request redress. This changes RRS 62.1(a).
- 2.4 The Race Committee will communicate with the fleet on VHF Channel 72.

3 SIGNALS MADE ASHORE

- 3.1 Flag signals will be flown from the western yardarm of the flagpole at Harbour Court.
- 3.2 When flag AP is displayed ashore, "1 minute" is replaced with "not less than 60 minutes" in race signal AP. This changes RRS Race Signals.
- 3.3 Signals designating the rendezvous location will be displayed at 0900 each race day from the western yardarm of the flagpole at Harbour Court.

4 SCHEDULE OF EVENTS

<u>Date</u>	<u>Time</u>	<u>Event</u>
Thursday, July 15	1300-1800	Registration
Friday, July 16	0700-0830	Late Registration at NYYC Sailing Center
	1100	First Warning Signal
	1800	Regatta Dinner (RSVP required)
Saturday, July 17	1100	First Warning Signal
Sunday, July 18	1100	First Warning Signal
	After Racing	Prize Giving at NYYC

4.2 One navigator race and multiple drop mark races are planned.

4.3 When more than one race will be held on the same day, the warning signal for each succeeding race will be made as soon as practicable.

4.4 On the final day of the regatta, the initial warning signal for the final race will not be made after 1500 hours. The warning signal for a start following one or more general recalls may be made after 1500.

5 CLASS FLAG AND CIRCLE ASSIGNMENT

5.1 Class Flags: Each boat shall display the numeric class flag corresponding to her class designation, as shown on the scratch sheet, from her backstay approximately six feet above the deck from the warning signal for the first class on her circle until she is no longer racing. Boats without a permanent backstay shall conspicuously display these flags in an alternate position in the aft part of the boat.

5.2 The ORC East Coast Championship fleet will sail on the Blue Circle.

6 RENDEZVOUS

6.1 Circle rendezvous locations are listed below and will be designated as described in SI 2.3 and SI 3.3. See SI Addendum C – NYYC Primary Race Areas.

Rhode Island Sound:

- Area “A” -in the vicinity of 160° M for 1.2 NM from R “2” QR Whistle marking Brenton Point
- Area “B” -in the vicinity of 120° M for 2.5 NM from R “2” QR Whistle marking Brenton Point
- Area “C” -in the vicinity of 275° M for 3.0 NM from R “2” QR Whistle marking Brenton Point
- Area “D” -in the vicinity of 225° M for 2.0 NM from R “2” QR Whistle marking Brenton Point
- Area “E” -in the vicinity of 165° M for 5.0 NM from R “2” QR Whistle marking Brenton Point
- Area “F” -in the vicinity of 145° M for 3.5 NM from R “2” QR Whistle marking Brenton Point

Newport Harbor and near Newport Bridge:

- Area “K” -between Goat Island and Rose Island
- Area “M” -in the vicinity of R “12” west of Rose Island
- Area “O” -in the vicinity of Potter Cove (just north of west end of the Newport Pell Bridge)

North of Newport Bridge:

- Area “R” -in the vicinity of 200° for 0.5 NM from Halfway Rock
- Area “T” -in the vicinity of G “7” QG off Quonset Point
- Area “U” -in the vicinity of 035° M for 1.0 NM from Hope Island

6.2 Once on station, the Race Committee may announce the lat/long positions of the signal vessel and starting mark over VHF 72. Failure to make such an announcement, or the timing of any announcement, shall not be grounds for a boat to request redress. This changes RRS 62.1(a).

7 CHECK-IN AND RETIREMENT

7.1 **Check-in on Land:** Each yacht shall check in at the registration desk at the NYYC Sailing Center at Harbour Court during the registration times so designated in the notice of race.

7.2 **Check-in on Water:** Prior to the warning signal for the first race, each boat shall check in with the Race Committee signal vessel in their rendezvous area by passing astern and announcing their sail number.

7.3 Boats retiring shall inform the Race Committee on VHF channel 72 or by calling the NYYC Sailing Office at (401) 845-9633 as soon as reasonably possible.

8 COURSES AND MARKS

The courses and marks for the regatta are described in the SI Appendices as shown:

Courses using Government Marks SI Addendum A

9 THE START

- 9.1** The starting line will be between a staff displaying an orange flag on the Race Committee signal vessel and either a staff displaying an orange flag on the port-end Race Committee vessel or the course side of the port-end starting mark as described in the relevant SI Addendum.
- 9.2** A boat starting later than five minutes after the starting signal will be scored DNS. This changes RRS A5.
- 9.3** The Race Committee will endeavor to hail boats observed to be OCS at the start over VHF channel 72. Failure to hail, the timing or order of any such hails, will not be grounds for a boat to request redress. This changes RRS 62.1(a).

10 CHANGE OF COURSE

See Addendum B – Drop Mark Courses.

11 THE FINISH

- 11.1** The finishing line will be between a staff displaying a blue flag on a Race Committee vessel and the course side of the finish mark as described in the relevant SI Addendum.
- 11.2** The same Race Committee vessel may or may not start and finish each race.

12 PENALTY SYSTEM

- 12.1** A boat that may have broken a rule of Part 2 or rule 31 while racing may take either a turns penalty in accordance with RRS 44.1. or a scoring penalty in accordance with RRS 44.3, at the time of the incident. This changes RRS 44.1.
- 12.2** The Protest Committee may impose penalties less than disqualification (DPI) for violations of racing rules other than those of Part 2. This changes RRS 64.2.
- 12.3** A boat that has taken a penalty shall submit an online penalty acknowledgement form no later than the end of the protest time limit.

13 TIME LIMITS

- 13.1** For courses designated in accordance with SI A2.1, the time limit for the first boat to sail the course and *finish* is four hours. Yachts failing to finish within 120 minutes after the first boat sails the course and finishes will be scored Time Limit Expired (TLE) and scored points as described in SI 15.4. This changes RRS 35, A4 and A5.
- 13.2** For courses designated in accordance with Addendum B, the time limit for the first boat to sail the course and finish is three hours. Yachts failing to finish within 1 hour after the first boat sails the course and finishes will be scored Time Limit Expired (TLE) and scored points as described in SI 15.4. This changes RRS 35, A4 and A5.

14 PROTESTS AND REQUESTS FOR REDRESS

- 14.1** The intent to protest and the boat being protested shall be communicated to the Race Committee at the first reasonable opportunity after the boat intending to protest finishes until acknowledged by the Race Committee. This changes RRS 61.1(a).
- 14.2** Request for Hearing forms may be filed online through the event website or at the Protest Committee Secretary Desk in the New York Yacht Club Sailing Center. Protests shall be delivered to the Protest Committee Secretary within one hour of the docking time of the Race Committee signal vessel after the last race of the day. This time will be posted on the Official Protest Committee Notice Board. This changes RRS 61.3 and RRS 62.2.
- 14.3** Notices will be posted as soon as possible to inform competitors of hearings in which they are parties. Protest hearings will take place at the NYYC Sailing Center as soon as possible after the notices are posted. The Protest Committee will attempt to hear protests in the order of receipt. Representatives of boats who are parties to a hearing shall remain on call in the vicinity of the protest rooms.
- 14.4** Notices of protests by the Race Committee, Technical Committee or the Protest Committee will be posted within the protest time limit on the Official Protest Committee Notice Board to inform boats under RRS 61.1(b).

- 14.5** When a boat has been involved in an incident that may be subject to protest, it is her responsibility to check the protest notices at the end of the protest filing time to see if she is cited in a protest. Failure of any boat to appear when called for a hearing will be considered by the Protest Committee as grounds for proceeding under RRS 63.3(b).
- 14.6** Breaches of SI 7 will not be grounds for protest by a boat. This changes RRS 60.1(a).
- 14.7** On the last scheduled day of racing, a request for redress based on a protest committee decision shall be delivered to the Protest Committee Secretary no later than 30 minutes after the decision was posted.
- 14.8** On the last scheduled day of racing, if no races are held, a Hearing Request for redress or reopening a hearing shall be delivered or submitted electronically within one hour after racing has been abandoned ashore or on the water. This changes RRS 62.2 and RRS 66.2.
- 15** **SCORING**
- 15.1** One race is required to be completed to constitute a series. When fewer than six (6) races have been completed, a boat's series score will be the total of her race scores. When six (6) or more races have been completed, a boat's series scores will be the total of her race scores excluding her worst score. This changes RRS A2.1
- 15.2** The decision on the Triple number system wind ranges (Low, Medium or High), and course classification (WL or All Purpose) will be at the sole discretion of the Race Committee and shall not be grounds for a request for redress by a boat. This changes RRS 62.1(a).
- 16** **PRIZES**
- 16.1** Awards shall be provided to the top boats in each class. Additional trophies may be given at the discretion of the OA.
- 16.2** Other trophies may be awarded at the discretion of the Organizing Authority.
- 17** **WAIVER AND RELEASE OF LIABILITY**
- 17.1** As a condition of entry, each owner, skipper and individual participating crew member shall submit an online Waiver & Release of Liability Form / COVID-19 Release. The fully executed Liability & Media Waiver Form / COVID-19 Release shall be submitted prior to racing. The waiver form link can be found on the event [website](#).
- 17.2** Media Waiver – Competitors and crew members on the competing boats grant, at no cost, the New York Yacht Club Regatta Association, Inc., New York Yacht Club, and any official sponsors of the regatta, the absolute right and permission to use their name, voice, image, likeness, biographical material as well as representations of the boats in any media worldwide (being television, print and internet media), including video footage, for the sole purposes of advertising, promoting, reporting and disseminating information regarding the ORC East Coast Championship and the participants in the ORC East Coast Championship.
- 17.3** Competitors participate in the regatta entirely at their own risk. All skippers and crew should familiarize themselves with RRS 3, Decision to Race. The Organizing Authority and all its Committee members will not accept any liability for material damage or personal injury or death sustained in conjunction with or prior to, during, or after the regatta.
- 18** **SAFETY REGULATIONS**
- 18.1** Restricted Channels: Competitors are reminded that Narragansett Bay and its approaches are considered restricted channels for commercial traffic and other vessels restricted in their ability to maneuver. Competitors must comply with the government right-of-way rules when in proximity to commercial or privileged marine traffic.
- 18.2** Newport Security Zone: In the event there is racing in Narragansett Bay, competitors should be aware of heightened security around the Navy base in Newport just to the north of the Newport Jamestown Bridge. The area may be defined by a series of white buoys marking the Newport Security Zone along the coast of the Naval Facilities from Coasters Harbor to the breakwater at the north end of Coddington Cove and the line defined by the buoys shall rank as an obstruction. Yachts shall not enter this area. A Navy patrol boat monitors the area and vessels navigating in the Exclusionary Zone may face action by Coast Guard and Naval authorities.
- 18.3** Additional Restricted Areas: There may be additional restricted areas due to Navy activity, shipping or fishing operations that may be described in an amendment to the sailing instructions.

19 NOTES

19.1 The event website can be found at <https://www.nyyc.org/web/pages/2021-orc-event>

19.2 For further information please contact:
New York Yacht Club, Harbour Court
5 Halidon Avenue, Newport, RI 02840
Tel: 401-845-9633 || Fax: 401-846-3303
Email: sailingoffice@nyyc.org

© Copyright New York Yacht Club 2021. All Rights Reserved.

New York Yacht Club; NYYC; Harbour Court, club burgee; certain other logos and marks are trademarks or registered trademarks of the New York Yacht Club in the United States and other countries. All Rights Reserved. Use is prohibited without written permission of the Secretary of the New York Yacht Club.

SAILING INSTRUCTIONS

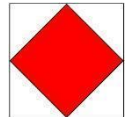
ADDENDUM A – COURSES USING GOVERNMENT MARKS

A1 ORDER OF START

The intended order of start will be announced on the circle VHF Channel. Classes may not start in numerical order. The Race Committee may combine two or more classes into one start by displaying multiple class flags at the warning signal. The Race Committee will endeavor to announce the next class(es) to start on the circle VHF Channel.

A2 COURSES

- A2.1** All boats shall pass through the center span only for any course passing under the Jamestown Verrazano Bridge and/or the Newport Pell Bridge, in which case the center span bridge piers define a gate mark.
- A2.2** Government marks shall have no required side except when designated as a rounding mark.
- A2.3** No later than the warning signal, the Race Committee will display on a board the course to be sailed. The Race Committee will endeavor to announce the designated courses over the circle VHF channel. Failure to make such an announcement shall not be grounds for a boat to request redress. This changes RRS 62.1(a).
- A2.4 COURSE 1** – If number one is displayed, the course will be designated using buoys as described in SI Addendum A3. The Race Committee will list the marks in the order to be rounded and the required side to leave each mark. The course will be:
- Start
 - Round the marks in the designated order leaving each mark to the designated side.
 - Finish between a staff displaying the blue flag on the Race Committee vessel and the nearby finishing mark. Note that the intended finishing line will be set at the starting location of the Race Committee signal vessel.
- A2.5** If at the start, Flag “F” is displayed on a separate pole, the finishing line will be between a staff displaying a blue flag on a Race Committee vessel and the nearby finishing mark approximately 0.4 NM north of the Fl R 6 sec Horn “2” on the northern point of Fort Adams. In the absence of the Race Committee vessel and/or finishing mark, the finishing line will be on a bearing of 120° M from G “3” Gong southeast of Rose Island.



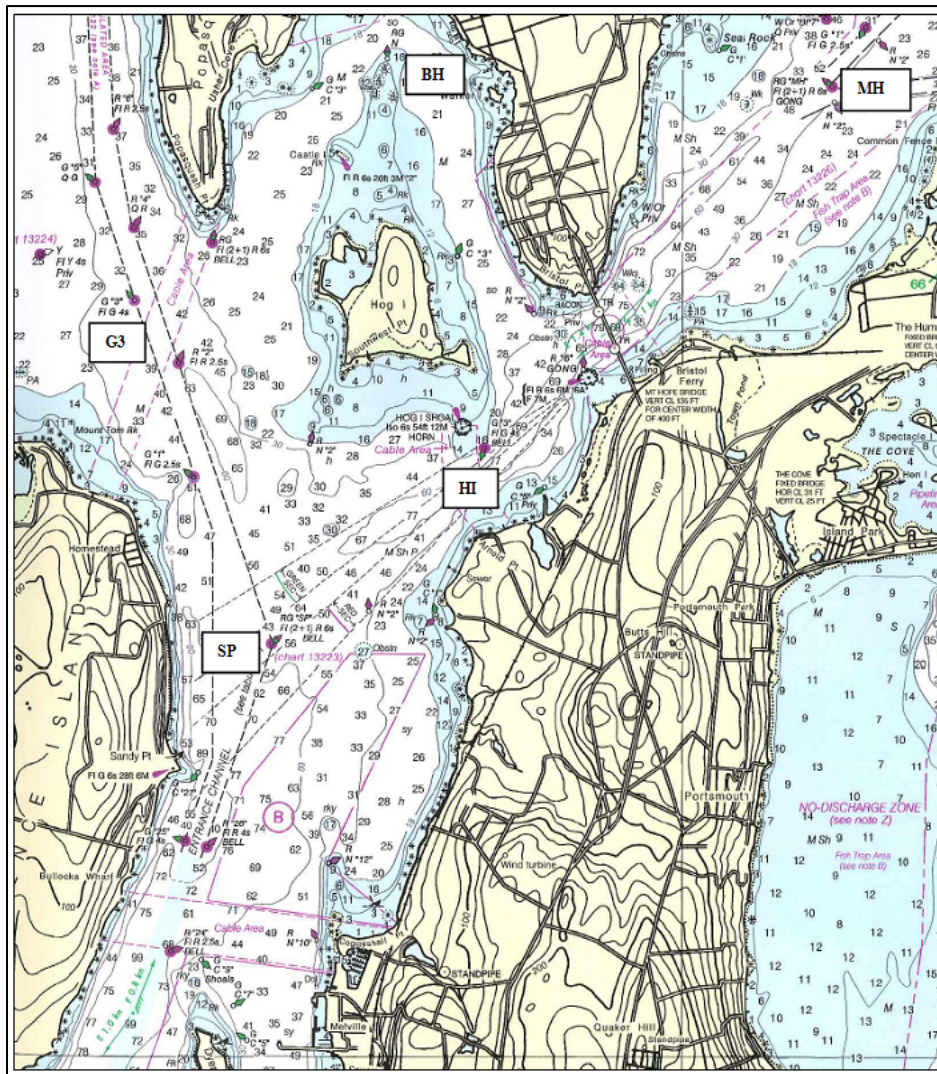
A3 MARKS

- A3.1** The starting mark will be a green tetrahedron buoy.
- A3.2** The finishing mark will be a pink tetrahedron buoy.
- A3.3** Special Marks “E” and “L”, if used, will be the same as the original mark colors for each circle as described in SI B2.1.
- A3.4** If used, Special NYYC Temporary Inflatable Race Marks 16, 17, O2 and N2, as designated on the current South Bay Race Chart, will be orange tetrahedron buoys.
- A3.5** All buoys listed on the current *South Bay Race Chart* provided at registration may be used in Course 1. In addition, the marks listed in SI Addendum A3.8 are additional rounding marks that might be used.
- A3.6 Special Mark “E”**
The Race Committee may add a new first mark “E” to any course described in SI Addendum A2. If special mark “E” is used, the Race Committee will list “E” along with the designated rounding side as the first mark on the course board as described in SI A2.1.
The magnetic bearing and distance (in nautical miles to the nearest tenth) to special mark “E” will be posted on a board on the Race Committee signal vessel.
- A3.7 Special Mark “L”**
The Race Committee may set special mark “L” approximately 0.1 NM to windward of the start line. If special mark “L” is used, it will be listed as a mark as described in SI Addendum A2.1.

A3.8 GOVERNMENT MARKS AND ISLANDS

See charts 13205, 13218, 13223, 13226 and 13224 for more detail.

Description	Approx. location
1 Gould Island	41° 32.00' N; 071° 20.67' W (center of island)
3 Hope I (east of Quonset) including R "2" at the southwest end and G C "1" at the northeast end	
4 Conanicut Island	
5 RW "NB" Mo(A) WHIS	41° 23.00' N; 071° 23.36' W
7 R "2" Fl R 4s WHIS south of Point Judith	41° 18.46' N; 071° 28.35' W
1BI G "1 BI" Fl G 4s BELL north of Block I	41° 15.49' N; 071° 34.55' W
M Block Island including:	
R "4" Fl R 6s WHIS off Southwest Pt	41° 08.73' N; 071° 37.35' W
Black Rock Pt. Buoy 2	41° 08.42' N; 071° 35.74' W
U Buzzards Light Tower Fl 2.5s 67ft 17M Horn	41° 23.82' N, 071° 02.08' W
PR Prudence Island including R "8" northwest of Patience Island and RG N at the northern end	
SP RG "SP" Fl (2+1) R 6s BELL	41° 36.92' N; 071° 17.59' W
G3 G "3" Fl G 4s (approx. 0.5 NM sw of Popasquash Neck)	41° 38.53' N; 071° 18.46' W
MH RGR "MH" Fl (2 +1) R 6s GONG in Mt. Hope Bay	41° 39.54' N; 071° 14.04' W
BH RGR N "Middle Ground Buoy" approx. 0.8 NM n of Hog I	41° 39.68' N; 071° 16.87' W
HI G "3" Fl G 4s BELL approx. 0.4 NM south southeast of Hog I	41° 37.79' N; 071° 16.29' W
DI Dutch Island	41° 30.19' N; 071° 24.04' W (center of island)



Marks near Prudence Island, Bristol and Mt. Hope Bay

SAILING INSTRUCTIONS

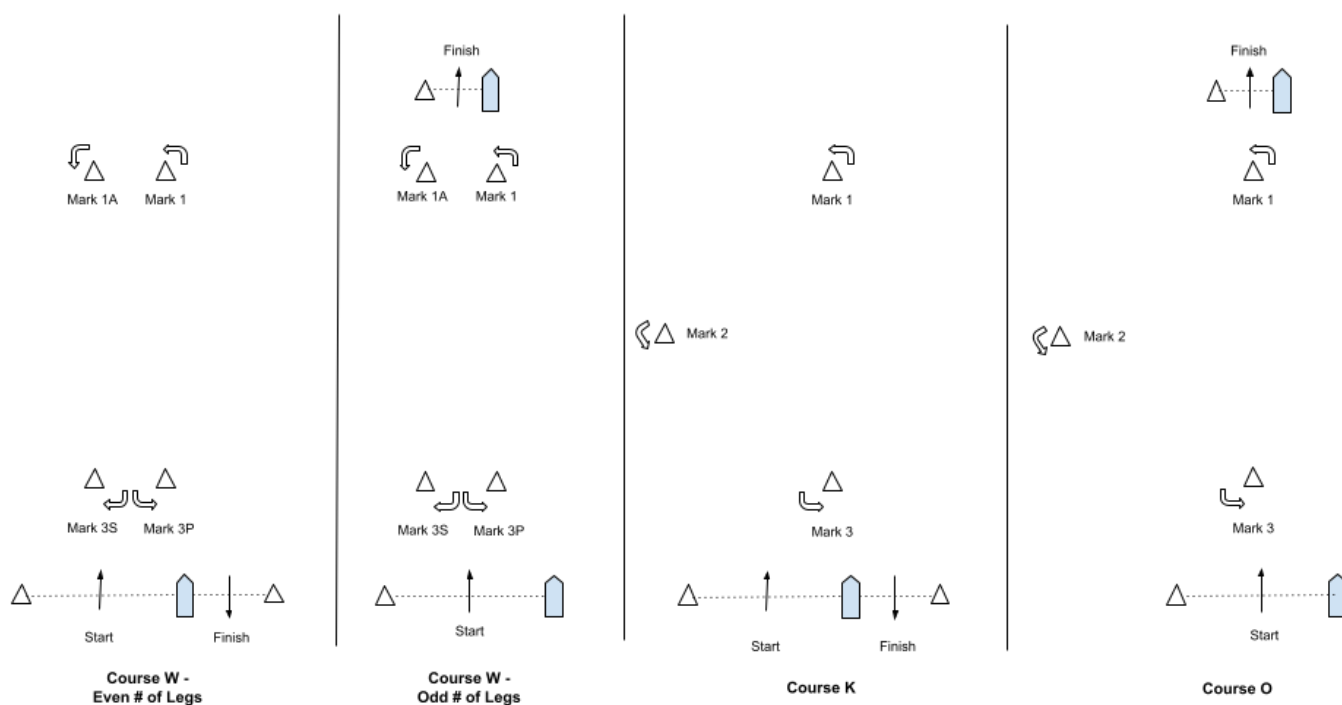
ADDENDUM B – DROP MARK RACES

B1 COURSES FOR DROP MARK RACES

B1.1 The Race Committee signal vessel will signal the course on a course board. Course designations are as follows:

- W2 Start – 1 – 1A – Finish (downwind)
- W3 Start – 1 – 1A – Gate (3S/3P) – Finish (upwind)
- W4 Start – 1 – 1A – Gate (3S/3P) – 1 – 1A – Finish (downwind)
- W5 Start – 1 – 1A – Gate (3S/3P) – 1 – 1A – Gate (3S/3P) – Finish (upwind)
- W6 Start – 1 – 1A – Gate (3S/3P) – 1 – 1A – Gate (3S/3P) – 1 – 1A – Finish (downwind)
- K Start – 1 – 2 – 3 – 1 – Finish (downwind)
- O Start – 1 – 2 – 3 – 1 – 3 – Finish (upwind)

B1.2 Course Diagrams:



B1.3 Course “W” is a Windward/Leeward course with a windward offset mark. A board indicating the number of LEGS to be raced will be shown next to the letter “W”. The distance between the windward mark and the offset mark shall not count as a leg for the purposes of indicating the number of legs.

B1.4 Course “K” is a Triangle/Windward/Leeward course.

B1.5 Course “O” is a Triangle/Windward/Leeward/Windward course.

B1.6 The leeward mark for Courses “W”, “O” and “K” will be an inflatable mark(s) set approximately 0.10 NM to windward of the starting line. A gate mark 3S/3P may be used for Course “W”.

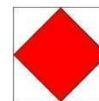
B1.7 The course designations, distance and bearing to the windward mark will be displayed on a board.

B1.8 Marks, including the windward offset mark, shall be rounded in order and always left to port, except that a gate, when used, shall be rounded as described in Definitions, Sail the Course paragraph (c). In the event a gate is not set, the single leeward mark shall be rounded to port.

B1.9 There will be a windward offset mark adjacent to the windward mark for courses W2, W3, W4, W5 and W6.

B1.10 Special Finish Mark “F”

If flag “F” is displayed on a separate pole, the finishing line for that class will be between a staff displaying a blue flag on a Race Committee vessel and the nearby finishing mark approximately 0.4 NM north of the Fl R 6 sec Horn “2” on the northern point of Fort Adams. In the absence of the Race Committee vessel and/or finishing mark, the finishing line will be on a bearing of 120° from G “3” Gong southeast of Rose Island. This changes SI Addendum B1.1.



B1.11 Long Windward Mark:

For all “W” courses, the Race Committee may set both a long windward mark and offset, and a short windward mark and offset. The distance to the long windward mark and the distance to the short windward mark will be displayed on a course board. If flag “D” is displayed on a separate pole, that class will use the long windward mark for each weather leg in that race. If flag “D” is not displayed, that class will use the short windward mark for each weather leg in that race.



B2 MARKS FOR DROP MARK COURSES

Marks will be inflatable buoys as follows:

<u>Original marks</u>	<u>Starting</u>	<u>Finishing</u>	<u>Change marks</u>
Orange	Green	Pink	Yellow

B3 COURSE CHANGE

- B3.1** To change the next leg of the course, the Race Committee will lay a new mark (or move the finishing line) and remove the original mark as soon as practicable. When in a subsequent change a new mark is replaced, it will be replaced by an original mark.
- B3.2** The Race Committee may change the course by up to five degrees in bearing and/or 0.2 nm in length without a signal or change of mark color. This changes RRS 33.
- B3.3** In addition to the requirements in RRS 33, the Race Committee will attempt to announce any course change on their respective circle VHF channel. Failure to make such an announcement shall not be grounds for a boat to request redress. This changes RRS 62.1(a).

B4 THE FINISH

The finishing line will be between a staff displaying a blue flag on a Race Committee vessel and the nearby finishing mark.

- a) For Course “W”, with an odd number of legs, and Course “O”, the finish line will be located approximately 0.1 NM to windward of the windward mark.
- i) On a “W” course with an odd number of legs that has a long windward mark in use, the finish line will be to windward of the long windward mark.
- b) For Course “W”, with an even number of legs, and Courses “K” and “K2”, the finish line will be located approximately 0.1 NM to leeward of the leeward mark and the finishing mark will be on the opposite side of the Race Committee signal vessel from the starting mark. See diagrams in SI Addendum B1.2.

SAILING INSTRUCTIONS

ADDENDUM C – NYYC PRIMARY RACE AREAS

