

Nyack Boat Club

2021 June Invitational Regatta Sailing Instructions

1. RULES

The regatta will be governed by the *rules* as defined in *The Racing Rules of Sailing*.

2. NOTICE TO COMPETITORS

Notices to competitors will be posted on the Race Committee Notice Board located at the south end of the Nyack Boat Club (NBC) porch.

3. CHANGES TO SAILING INSTRUCTIONS

Any change to the sailing instructions will be posted by 1800 on the day prior to the affected event(s), or announced on the water by the Race Committee (RC).

4. SIGNALS MADE ASHORE

- 4.1. Signals made ashore will be displayed from the flagpole at the RC slip.
- 4.2. When flag AP is displayed ashore, '1 minute' is replaced with 'not less than 20 minutes' in the Race Signals AP.

5. SCHEDULE OF RACES

- 5.1. The Racing Schedule is published in the Notice of Race for the regatta.
- 5.2. No Warning Signal will be made after 1300 on Sunday.
- 5.3. *Racing* for the day on Saturday will not be *abandoned* prior to 1530 except in cases of extreme weather.
- 5.4. Class placards on the cabin top of the Signal Boat will designate the order of the *starts* for the different fleets.

6. CLASS FLAGS

- 6.1. Class Flags will be the sail emblems of one-design fleets

7. RACING AREA

Races will be sailed adjacent to the Nyack Boat Club, in the Tappan Zee area of the Hudson River, north of the Mario Cuomo (Tappan Zee) bridge.

8. COURSES

- 8.1. The course diagrams and identifying course letters are illustrated on the last page of these SIs.
- 8.2. No later than the warning signal, the Signal Boat will display the course and the approximate compass bearing to the first *mark*.
- 8.3. When an alternate windward mark is used the Signal Boat will display code flag G before the warning signal for that class.

9. MARKS

- 9.1. *Mark* will be orange inflatable tetrahedrons.

9.2. The alternate windward mark, as provided in paragraph 8.3, will be a large lime green tetrahedron. It is not a mark of the course for fleets that did not have the code flag G displayed at their start.

9.3. New *marks*, as provided for in paragraph 12, will be yellow inflatable cylinders.

9.4. The *starting*, *finishing*, and/or *offset marks* will be orange inflatable tetrahedrons, except that the finishing mark for course PL shall be a small lime green inflatable tetrahedron.

10. OBSTRUCTIONS

10.1. The NBC mooring area is designated as an *obstruction*. No boat shall sail within this *obstruction* while *racing*. The mooring area is defined as the area within straight lines joining all outermost mooring buoys.

10.2. A boat that is racing shall not cross the start and/or finish line except when preparing to start, starting, or finishing. Except at those times, the start and/or finish line, including the marks bounding them, are designated as a single obstruction.

11. THE START

11.1. The starting line will be between the staff displaying an orange flag on the Signal Boat at the starboard end of the line and the course side of the starting mark.

11.2. A boat starting later than 4 minutes after her starting signal will be scored DNS without a hearing. This changes RRS 63.1, A4, and A5.

11.3. Boats whose warning signal has not been made shall keep clear of the starting area during the starting sequence for other fleets.

11.4. The RC will attempt to hail the sail number(s) for OCS boat(s) after the starting signal. Failure to make a hail or to time it accurately will not be grounds for redress. This changes RRS 62.1(a).

12. CHANGE OF THE NEXT LEG OF THE COURSE

To change a leg of the course, the RC will lay a new *mark* (or move the finishing line) and remove the original *mark* as soon as practicable. When in a subsequent change a new *mark* is replaced, it will be replaced by an original mark.

13. THE FINISH

The finish line will be between the staff displaying an orange flag on the Signal Boat and the course side of the finishing mark.

14. PENALTY SYSTEM

Appendix T ARBITRATION and Appendix V1 PENALTY AT THE TIME OF AN INCIDENT will be in effect.

15. TIME LIMITS

- 15.1. The time limit for a race shall be two hours from its *starting* signal. If no boat in that fleet completes the race within the two-hour limit, the race shall be *abandoned*.
- 15.2. The time limit for the first boat of a class to reach the first mark shall be 30 minutes.
- 15.3. Any boat that has not finished within one hour of the first finisher in her fleet shall be scored TLE without a hearing. This changes rules 35, 63.1, A4 and A5.

16. PROTESTS AND REQUESTS FOR REDRESS

- 16.1. Protest forms are available in the rack next to the RC locker. Protests and requests for redress shall be delivered to the RC within the time limit.
- 16.2. The time limit for protests and requests for redress shall be 1 hour after the Signal Boat reaches her mooring or slip. This includes protests and requests for redress by the RC. This changes RRS 61.3 and 62.2.
- 16.3. A boat intending to protest or request redress based on an incident in the racing area she was involved in or sees shall, at the first reasonable opportunity after she finishes, inform the race committee at the finish line of her intent to protest or request redress and, when applicable, the identity of the protestee.

17. SCORING

- 17.1. Scoring will be the low point system.
- 17.2. One race must be completed to constitute a regatta.
- 17.3. If 6 or more races are sailed, a boat's worst score shall be excluded. For the Thistle class, all races will be counted (no throw-outs). This changes RRS A 2.1.
- 17.4. The RC may, at its discretion, assign a finishing position to boats still racing that have not finished. This changes *rules* A3, A4, A5, and 28.1.
- 17.5. For Thistles, the regatta will be scored as one single fleet. Your district finishing place will be based on your ranking in the overall regatta vs. other competitors in your district.

18. SAFETY

- 18.1. All boats intending to race shall check in with the RC, before their first race of each day, by sailing past the Signal Boat on starboard tack, hailing their sail number and

receiving verbal confirmation from the RC. Any boat that has not checked in will be scored DNC. This changes RRS 63.1, A4 and A5.

- 18.2. A boat that retires from a race shall notify the RC as soon as possible by sailing by the Signal Boat or mark boats, or hailing the RC on VHF.
- 18.3. A boat that retires and does not notify the RC will be scored DNE, Disqualification Not Excludable. This changes RRS 63.1, A4 and A5.
- 18.4. All boats are required to carry the following safety equipment: suitable anchor and rode, hand-bailer or pump, paddle or motor, whistle or horn and a Type IV throwable flotation device. All boats must have a US Coast Guard approved PFD for every person on board.
- 18.5. The RC or Race Patrol may inspect a boat at any time; any boat found deficient shall be disqualified from all races for the day. This changes RRS A4, A5, and 63.1.

19. REPLACEMENT OF CREW

- 19.1. For Thistles, substitution of competitors will not be allowed without prior approval of the regatta chair.

20. RADIO COMMUNICATIONS

- 20.1. The RC and Race Patrol will communicate on VHF Channel 78.
- 20.2. A boat may use VHF to communicate with the RC under the following circumstances: checking in, retiring from a race, in need of assistance, or medical emergency.
- 20.3. Except for the circumstances listed in 19.2, a boat shall neither make radio or cell phone transmissions while racing nor receive radio or cell phone communications not available to all boats.

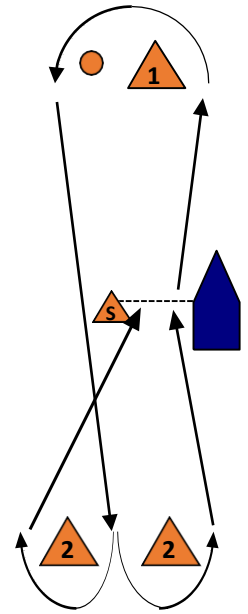
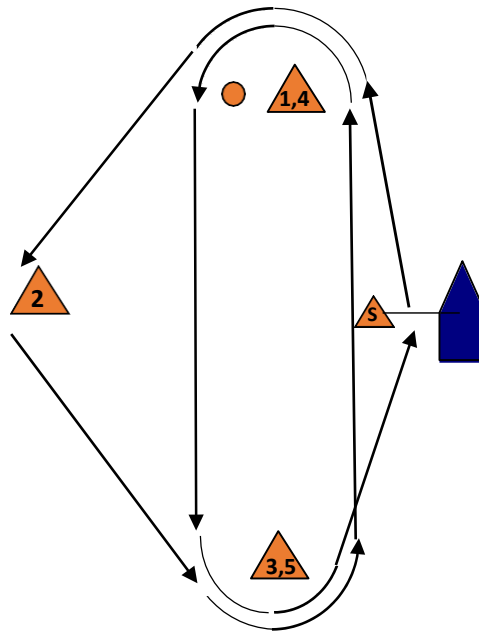
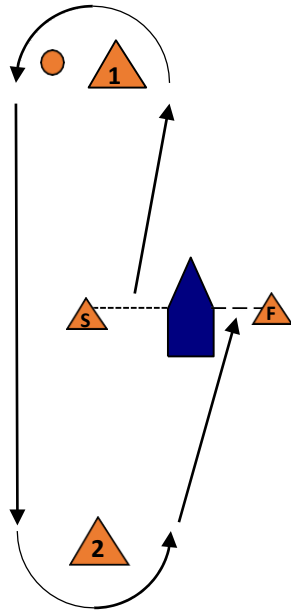
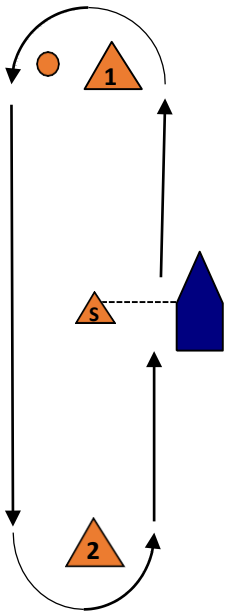
21. DISCLAIMER OF LIABILITY

Competitors participate entirely at their own risk. See RRS 4, Decision to Race. The Organizing Authority will not accept any liability for material damage or personal injury or death sustained in conjunction with or prior to, during, or after the race.

22. INSURANCE

Each participating boat shall be insured with valid third-party liability insurance.

COURSES



Course L1

Course PL1

Course F

Course G1

All marks will be left to port, except for course PL when competitors will finish leaving the Signal Boat to port and the lime green finish mark to starboard. For courses L, PL, and G the numeral indicates the number of laps around the course. 1 is once around, 2 is twice around.