

2021 I-LYA Toledo Deep Water Race
July 29th 2021
Organizing Authority: Inter-Lake Yachting Association
SAILING INSTRUCTIONS

1 RULES

- 1.1 This race will be governed by the current International Sailing Federation Racing Rules of Sailing (RRS), the prescriptions of the National Authority (USSA), the rules of Inter-Lake Yachting Association (ILYA), and, where and when applicable, the International Regulations for Preventing Collisions at Sea (IRPCS/COLREGS).
- 1.2 RRS 63.7 is changed to read: If there is a conflict between the Sailing Instructions and the Notice of Race, the Sailing Instructions and amendments thereto will prevail.
- 1.3 RRS rule 60.1(a) is changed to prohibit a boat from protesting another boat for an alleged breach of a class rule requiring class membership.
- 1.4 RRS rule 60.1(b) is changed with the following added: In the absence of a valid rating certificate a boat's assigned rating shall not be grounds for redress.
- 1.5 A boat that retires from the race shall report her action as soon as possible to the Race Committee, either by Marine Radio (VHF channel 72) or by phone or in person to one of the Race Committee boats, or by phone to the Deepwater Finish committee See section 10.1.

2 NOTICES TO COMPETITORS

- 2.1 Before the Race: Notices to competitors will be posted on the official notice board(s) located North Cape Yacht Club bulletin board and front door to the club.
- 2.2 After the Race: Notices to competitors will be posted on the Official Bulletin Board located on the pavilion at Put-In-Bay Yacht Club (PIBYC).


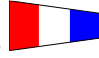
3 CHANGES TO SAILING INSTRUCTIONS

Any change to the sailing instructions will be posted before 8:00 AM on the day of the race, except that any change to the schedule of races will be posted by 8:00 PM on the day before the race.

4 SIGNALS MADE ASHORE

- 4.1 Before the race signals made ashore will be displayed on the flag pole at North Cape Yacht Club.
- 4.2 After the race signals will be flown from the flag pole located at the end of the PIBYC dock.
- 4.3 POSTPONEMENT: When flag "AP" is displayed ashore with two sound signals this means "The race is postponed". Lowering the "AP" flag with one sound signal means "The warning signal will be made in not less than forty-five (45) minutes."

5 SCHEDULE OF RACES, CLASS FLAGS and STARTING ORDER

- 5.1 The Class flag for JAM will be Code Flag #6 
- 5.2 The Class flag for PHRF will be Code Flag #3 
- 5.3 The First Warning for JAM is scheduled for 8:55 AM.
- 5.4 The First Warning for PHRF is scheduled for 9:00 AM.

6 RACING AREAS

The racing area will be the open waters of Lake Erie including the Islands.

7 THE COURSES AND MARKS

7.1 The course shall be from the Start Line to the Finish Line leaving Rattlesnake Island to starboard and Middle Bass Island to port. The course length is 27.9 nm.

8 THE START

8.1 Races will be started using RRS 26.

8.2 The starting line will be between a staff displaying an ORANGE flag on the Race Committee Signal Boat and NCYC West Mark.

9 RECALLS

9.1 INDIVIDUAL RECALL: The Signal Boat will display code flag "X" and sound one signal in accordance with RRS 29.1.

9.2 The Race Committee may attempt to hail the boat, or boats, which have started improperly. However, the following are not grounds for redress: failure of committee to hail any or all boats, failure of a boat to hear or receive its hail, timeliness of the hail, or the order of boats within the hail.

10 THE FINISH

10.1 Lead boats are requested to contact the I-LYA Deepwater Finish Committee on channel 72 or as they approach the South Bass Island. If unable to contact over radio call 216-210-2108.

10.2 The Finish Line shall be between two Orange buoys located (on a north-south line) between Middle Bass and South Bass Islands.

10.3 The inner buoy will be placed approximately 500 feet from the shore of South Bass Island at approximately N 41 39.869 W 82 48.436.

10.4 The outer buoy will be placed approximately 500 feet north of the inner buoy at approximately N 41 39.967 W 82 48.453.

10.5 All boats shall finish between the two buoys keeping the inner buoy to starboard and the outer buoy to port.

10.6 Finish Line sightings will take place from a flag pole flying an RC flag on the shore of South Bass Island, south of the inner buoy, at approximately N 41 39.75 W 82 48.42. Be positive you are properly identified as you finish.

10.7 For night finishes or during periods of reduced visibility, each finishing buoy will have a flashing White light.

10.8 Boats finishing at night and/or during periods of reduced visibility shall illuminate their sail numbers prior to crossing the finish line and shall keep them illuminated until well clear of the finish line.

10.9 Boats who have finished properly and are no longer racing shall keep well clear of the finish area and shall not re-cross through the finish line to the course side.

10.10 All boats shall turn in a "finish card." A Finish Card is included in these Sailing Instructions and is to be filled out and placed in the finish card box located on the Dock Masters boat located at the end of A Dock within three (3) hours after finishing.

11 TIME LIMITS

11.1 There is no time limit.

12 PROTESTS AND REQUESTS FOR REDRESS

12.1 Protests forms are available at race headquarters at PIBYC, and protests shall be delivered there during the Protest Time as defined in Instruction 12.2

12.2 Protest Time shall end two (2) hours after the last boat has either finished, retired or withdrawn from the race.

12.3 Protest notices will be posted on the Official Bulletin Board shortly after Protest Time ends to inform competitors where and when there is a hearing in which they are parties or named as a witness.

12.4 Protests will be heard at the Protest Office at PIBYC in approximately the order of receipt and as soon as practical.

12.5 Notices of protests by the race committee or protest committee will be posted on the Official Notice board to comply with RRS 61.1(b).

13 SCORING

13.1 Scoring is by RRS Appendix A2.

13.2 Finishing places will be established by corrected time based on the handicap system time on distance or, in the case of a one design class the order of finish.

14 SAFETY REGULATIONS

14.2 A boat that retires from a race shall notify the Race Committee, the ILYA Finish Line or the Organizing Authority as soon as possible.

14.3 All boats shall carry the US Coast Guard required safety equipment.

15 RADIO COMMUNICATION

15.1 Race Committee communications shall be on VHF Channel 72.

15.2 Except in an emergency, a boat shall neither make radio transmissions while racing nor receive radio communications not available to all boats. This restriction also applies to mobile telephones.

15.3 Any communications between R/C personnel which may be overheard by competitors shall not be grounds for redress.

16 PRIZES

16.1 Flags will be awarded to 1st, 2nd & 3rd place finishers in each class.

17. DOCKAGE

17.1 After finishing, boats who have registered for the I-LYA Regatta and will be docking at the I-LYA docks shall call the I-LYA Dock Master John Delassandro on Channel 69 or phone 734-673-3087 for docking assignment.

17.2 Dockage for boats not registered for the I-LYA Regatta is not included in your Deepwater Race registration.

18 DISCLAIMER OF LIABILITY

Competitors participate in the regatta entirely at their own risk. See RRS 4, Decision to Race. The organizing authority will not accept any liability for material damage or personal injury or death sustained in conjunction with or prior to, during, or after the regatta.

TOLEDO DEEPWATER FINISH CARD

(legibility counts - If we can't read it)

Name of Your Boat: _____

Your Sail Number: _____

Time of Your Finish (HH:MM:SS): _____

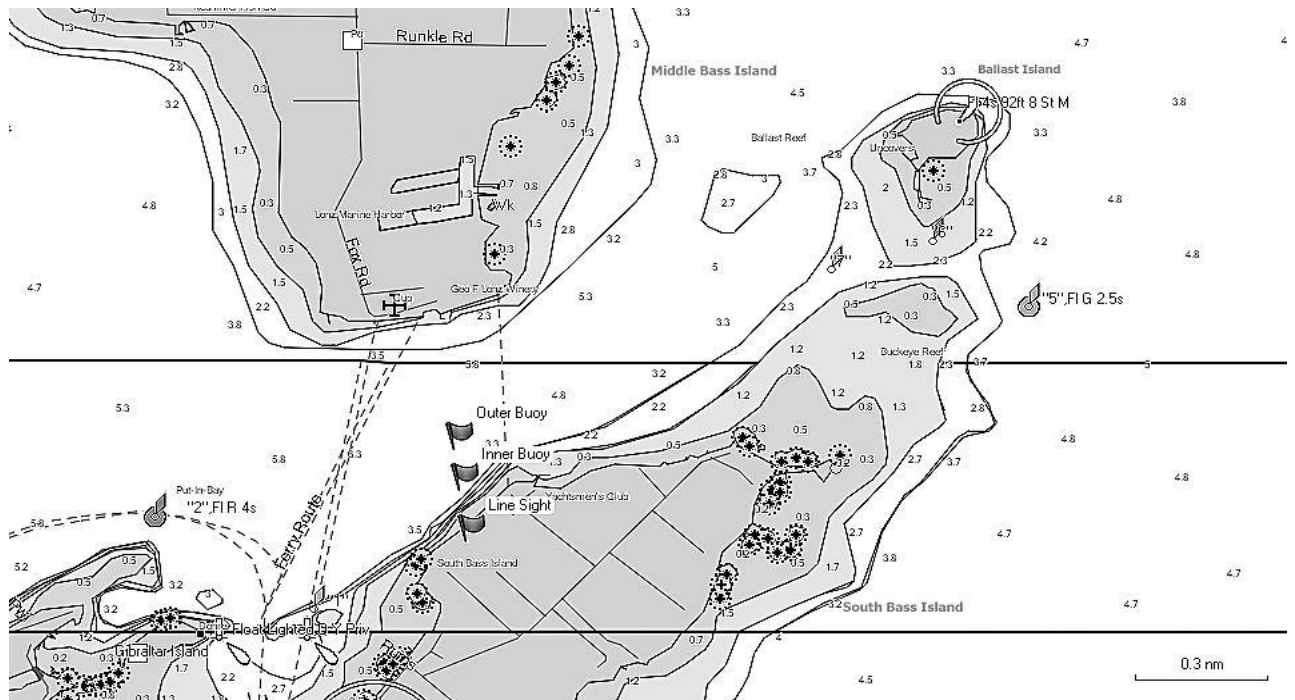
Boat Ahead, if known (Sail Number or Name): _____

Boat Behind, if known (Sail Number or Name): _____

----- **Detach Here** -----

(Place in the finish card box located on the Dock Masters boat located at the end of A Dock within three (3) hours after finishing.)

**Toledo Deepwater Finish Diagram
(General Reference Only – Not To Be Used For Navigational Purposes)**



7/25/2021