

# SAILING INSTRUCTIONS

## ABYRA Night Race Saturday, July 26, 2021



### 1 RULES

This race will be governed by the rules as defined in *The Racing Rules of Sailing* (RRS) 2021-2024 and as modified by the 2021 Anchor Bay Yacht Racing Association (ABYRA) Handbook, this race's Notice of Race, and these Sailing Instructions. The ABYRA Handbook is available on the AYC website at [www.sailayc.org/racing](http://www.sailayc.org/racing) and NSSC website [NorthStarSail.org/Racing](http://NorthStarSail.org/Racing).

### 2 NOTICES TO COMPETITORS

All notices to competitors will be posted at [www.Yachtscoring.com](http://www.Yachtscoring.com). Notices may be posted at the free standing case to the west side of the parking lot at North Star Sail Club, but this is not required.

### 3 CHANGES TO SAILING INSTRUCTIONS

Any changes to the sailing instructions will be posted on [www.Yachtscoring.com](http://www.Yachtscoring.com) at least 24 hours prior to the first scheduled warning sound on the day of the race or will be available on the water from the RC boat when it displays code flag L per RRS 90.2.

### 4 SIGNALS MADE ASHORE

4.1 Signals made ashore will be displayed from the North Star Sail Club flag pole.

4.2 When flag AP is displayed ashore, "1 minute" is replaced by "not less than 30 minutes" in Race Signals AP.

### 5 SCHEDULE

The warning signal for the start is scheduled for 1900 on Saturday, June 26, 2021. A sequence alert, consisting of four or more sounds, may be sounded one minute ahead of the warning signal. The absence of a sequence alert shall be disregarded.

### 6 CLASSES AND RATINGS

6.1 Competing yachts will be classed and rated in accordance with the latest measurements and ratings accepted by and on file with the Organizing Authority Race Chairman. Boats will race under PHRF and One Design Rules as appropriate. Classes will be posted on [www.Yachtscoring.com](http://www.Yachtscoring.com) no less than 2 hours prior to the first scheduled warning sound.

#### 6.2 Class Flags

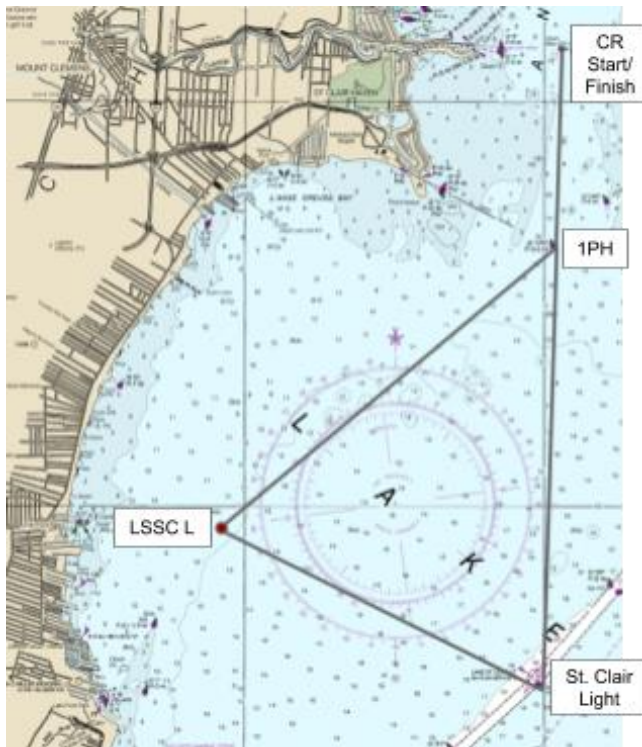
Classes will be assigned the following class flags and starting order:

Class 1	Pink	Start 1
Class 2	White	Start 2
Class 3	Gold	Start 3
Class 4	Purple	Start 4
Class 5	Light Blue	Start 5
Class 6	Green	Start 6

# SAILING INSTRUCTIONS

## 7 RACING AREA

The racing area will be northern Lake St. Clair. One of two courses will be used. The chart shows the approximate race area.



## 8 COURSES

Courses begin at government buoy CR and head south from CR, using government buoy CR, government buoy 1PH, St. Clair Light, and LSSC buoy L. The course will be announced on the water by the race committee with the appropriate signal shape.

The following table describes the courses, including the signal shape, the order in which marks are to be passed, and the side on which each mark is to be left.

Signal Shapes	Course	Marks (indicating marks left to port or starboard)
(red)	Red	Start–1PH (stbd)–LSSC L (port)–St. Clair Light (port)–1PH (port) –Finish
(green)	Green	Start–1PH (stbd)–St. Clair Light (stbd)–LSSC L (stbd)–1PH (port)–Finish

## 9 MARKS

The following table describes the approximate position of each mark.

Course Marks		
CR	42° 35.64'	82° 44.72'
1PH	42° 33.21'	82° 44.86'
St. Clair Light	42° 27.93'	82° 45.24'
LSSC L	42° 29.81'	82° 50.62'

# SAILING INSTRUCTIONS

## 10 THE START

- RRS 26 is unchanged.

## 11 SHORTENING OR ABANDONMENT AFTER THE START

- RRS 32 is unchanged

## 12 THE FINISH

- The race will finish between committee boat RC flag and government buoy CR.
- If the race committee is absent when a boat finishes, she should report her finishing time and her position relative to nearby boats to the race committee at the first reasonable opportunity.
- All skippers should identify their yachts, illuminate and call sail numbers, and be recognized when finishing at night. Skippers should note yacht ahead and yacht behind, if needed, for clarification when results are calculated.

## 13 TIME LIMIT

The time limit shall be six hours after a class start. If one boat sails the course and finishes within the time limit, all boats in that class that finish within two hours of the first boat's finish shall be scored according to their finishing places, unless the race is abandoned. Boats that finish two hours or more after the first boat in that class finished will be scored Time Limit Expired (TLE) – the boat's score will be the number of competitors in the starting area plus 1.

## 14 PROTESTS AND REQUESTS FOR REDRESS

Protesting yachts must file within 90 minutes of the finish time of the last boat. Hearing will be set by the DRYA Protest Chairman. It is the responsibility of the skippers involved to follow the hearing guidelines outlined by DRYA.