

Chicago to Michigan City to Chicago Race 2021

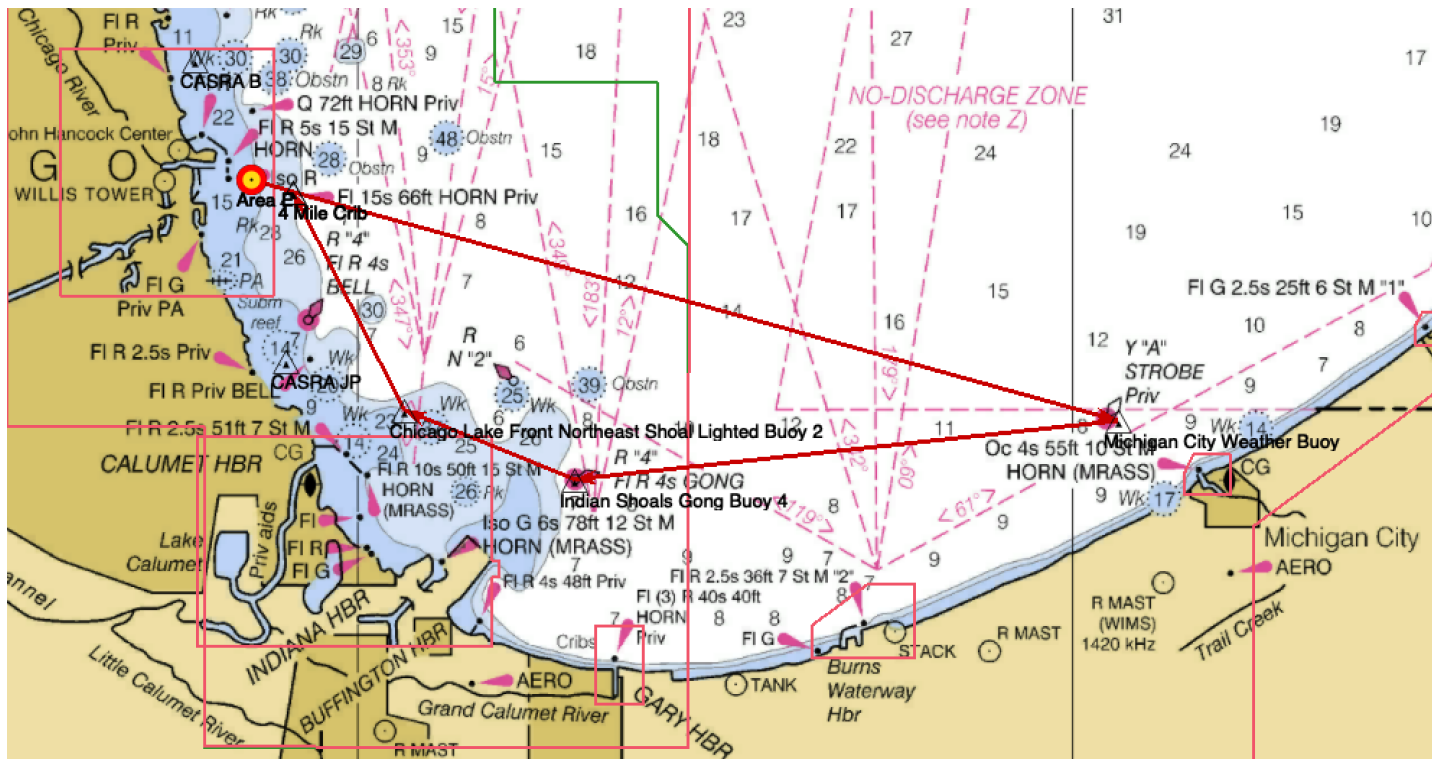
Sailing Instructions Amendment No. 1

Published 6/23/21

Replace Section 9 with:

9. Course & Marks

9.1. The diagram below provides an overview of the course.



9.2 The table below outlines the marks in order.

Mark	Latitude	Longitude	Leave Mark to	Description
Start	41°52.80 N	87°34.46 W	Port	Orange floating mark
1	41°52.3640 N	87°32.720 W	Starboard	4 mile crib
2	41°45.31 N	86°58.11 W	Starboard	MC Weather Buoy
3	41°43.43 N	87°20.88 W	Starboard	Indiana Shoals Lighted Gong Buoy 4
4	41°45.60 N	87°28.03 W	Starboard	Chicago Lake Front Northeast Shoal Lighted Buoy 2
5	41°52.3640 N	87°32.720 W	Port	4 mile crib
Finish	41°52.80 N	87°34.46 W	Port	Orange floating markk

Add the following to Section 10:

10. The Start

10.6 Starting Sequence & Class Breaks

Class	Ratings Band	Flag	Warning	Start
T-10	One Design	0 (Zero)	1830	1835
PHRF 5	> 95	5	1835	1840
PHRF 4	69 - 93	4	1840	1845
PHRF 3	45 - 66	3	1845	1850
PHRF 2	0 - 42	2	1850	1855
Beneteau 36.7	One Design	6	1855	1900
PHRF 1	< 0	1	1900	1905