



ETCHELLS EUROPEAN CHAMPIONSHIPS 20 – 22 AUGUST 2021

**ORGANISING AUTHORITY
ROYAL YACHT SQUADRON
COWES, UK**

SAILING INSTRUCTIONS

V5 – additions and amendments from v4 highlighted

The notation '[DP]' in a rule in the Sailing Instructions means that the penalty for a breach of that rule may, at the discretion of the protest committee, be less than disqualification.

1. RULES

- 1.1 The event is governed by the rules as defined in the Racing Rules of Sailing (RRS).
- 1.2 Reasonable actions by event officials to implement COVID-19 guidance, protocols or legislation, even if they later prove to have been unnecessary, are not improper actions or omissions.

2. CHANGES TO SAILING INSTRUCTIONS

- 2.1 Any change to the Sailing Instructions (SIs) made ashore will be posted by 0900 on the day it will take effect, except that any change to the schedule of races will be posted by 2000 on the day before it will take effect.
- 2.2 Changes to a Sailing Instruction may be made on the water using VHF Radio to communicate with competitors.

3. COMMUNICATIONS WITH COMPETITORS

- 3.1 Notices to competitors will be posted on the Official Notice Board (ONB).
- 3.2 The ONB will be online at www.yachtscore.com.
- 3.3 The Race Office is in the Royal Yacht Squadron (RYS).
- 3.4 The Race Committee intends to broadcast race information and course information by VHF Ch 05.
- 3.5 Competitors wishing to communicate with the Race Committee should do so on VHF Ch 77.
- 3.6 While racing, except in emergency, a boat shall not make voice or data transmissions and shall not receive voice or data communication that is not available to all boats.
- 3.7 Boats may be supplied a tracker by the Organising Authority.

- 3.8 [DP] The tracker, if supplied, shall be carried onboard a boat from leaving its berth until it has returned to its berth.
- 3.9 [DP] Trackers shall be collected from and returned to the Etchells container at Cowes Yacht Haven.
- 3.10 [DP] Trackers shall be returned within the protest time limit.

4. CODE OF CONDUCT

- 4.1 Competitors and support persons shall comply with reasonable requests from race officials.

5. SIGNALS MADE ASHORE AND AFLOAT

- 5.1 Signals made ashore will be displayed at the RYS Lodge Flagstaff and repeated on the event WhatsApp page.
- 5.2 When flag AP is displayed ashore, "1 minute" is replaced by "not less than 45 minutes". This changes Race Signals AP.

6. SCHEDULE OF RACING

- 6.1 The intention of the Race Committee is to run nine races over the three days of the regatta.
- 6.2 The Race Committee intends to run no more than three races each day. The target time will be 50 minutes.
- 6.3 On the last day of racing, no warning signal will be made after 1500.
- 6.4 The times shown in the table below are UTC plus 1 hour (British Summer Time).
- 6.5 Tide Times are for High Water Portsmouth.
- 6.6 Schedule

| DAY HWP (BST) | TIME | FIRST WARNING SIGNAL | NOTES |
|-------------------------------|----------------|----------------------------|--|
| Thu 19 Aug HW 0930 4.1m | 1600 - 1900 | | Registration and Crew Weigh in at CYH. |
| Fri 20 Aug HW 1040 4.3m | 0930 | 1055 | Briefing via WhatsApp Race 1. Race 2 & 3 asap after each finish. |
| Sat 21 Aug HW 1130 4.5m | | 1025 | Race 4. Race 5 & 6 asap after each finish. |
| Sun 22 Aug HW 1210 4.6m | Approx 1600 | 1025 | Race 7. Race 8 & 9 asap after each finish. Prizegiving asap after racing in RYS. |

7. CLASS FLAGS

The class flag is shown below.

| | |
|------------------------|--|
| Class Flag ICOS "E" | International Etchells Class Flag  |
|------------------------|--|

8. RACING AREA

- 8.1 Racing will take place from a Committee Vessel in the Central Solent, including the Bramble Bank.
- 8.2 The Race Committee intends to announce approximate location of the committee boat at least 90 minutes before the first warning signal on both VHF CH 05, and on the Event WhatsApp group.

9. COURSES

- 9.1 The format for racing will be windward/leeward. See Addendum A.
- 9.2 The race committee intends to display the course signal with the compass bearing and distance in nautical miles to Mark 1 on the committee vessel no later than the warning signal.
- 9.3 With reference to gate marks 4p/4s, if only one gate mark is in position, that mark shall be rounded to port.
- 9.4 A chartlet showing the Solent Two Character Codes can be found in Addendum B of these SIs to assist boats in locating the race area and Committee Vessel.

10. MARKS

- 10.1 With reference to Addendum A, marks 1, 1a, 4s & 4p will be orange inflatable marks.
- 10.2 The starting marks will be a committee vessel and a black inflatable mark.
- 10.3 The finishing marks will be a committee vessel and a black inflatable mark.
- 10.4 When a new mark has been laid to change the next leg of a course it will be a black inflatable mark.

11. OBSTRUCTIONS

- 11.1 **Yachts transiting to and from the race area** shall comply with Associated British Ports Notice to Mariners No 09 of 2021 giving details of a Precautionary Area and Moving Prohibited Zone (MPZ).

12. THE START

- 12.1 To alert boats that a race or sequence of races will begin soon, an orange start line flag will be displayed with multiple sound signals not less than five (5) minutes before a warning signal is displayed.
- 12.2 The starting line will be between a staff displaying an orange flag on the Committee Vessel at the starboard end and the course side of the port-end starting mark.
- 12.3 If any part of a boat's hull is on the course side of the starting line at her starting signal and she is identified, the race committee, after Flag X has been displayed, will attempt to hail her bow number, sail number or boat name as soon as practicable using VHF Ch 05. Failure to hail her number, failure of her to hear such a hail, or the order in

which boats are hailed will not be grounds for a redress request. This changes RRS 62.1(a).

- 12.4 Bow numbers will also be used for Uniform and Black Flag notifications. This changes RRS 30.3 and 30.4.

13. CHANGE OF THE NEXT LEG OF THE COURSE

- 13.1 The position of any mark(s) may be adjusted by up to plus or minus 10 degrees relative to previous location and up to approximately 200 metres to windward or leeward without signalling Flag C, a direction signal, a length signal, or a sound signal. This changes RRS 33.
- 13.2 When a change the next leg of the course has been signalled, the Race Committee will lay a new mark (or move the finishing line) and remove the original mark as soon as practicable. When in a subsequent change a new mark is replaced, it will be replaced by an original mark.

14. THE FINISH

- 14.1 The finish line will be between a staff displaying a blue flag on the Committee Vessel and the course side of the finishing mark.

15. PENALTY SYSTEM

- 15.1 RRS 44.1 is changed so that a boat may take a One-Turn Penalty when she may have broken one or more rules of Part 2 or rule 31 in an incident while racing. However, when she may have broken one or more rules of Part 2 while in the zone around a mark other than a starting mark, her penalty shall be a Two-Turns Penalty.

15.2 Penalties incurred while in the zone of the windward mark or on the offset leg shall be delayed and taken promptly on the downwind leg. This changes RRS 44.2

16. TIME LIMITS

- 16.1 The following time limits will apply.
 - (a) The time limit for the first boat to sail the course and finish is 90 minutes.
 - (b) Finishing Window. The time limit for boats to finish after the first boat sails the course and finishes is 20 minutes. Boats that are still racing but do not finish within the Finish Window, will be scored Time Limit Expired (TLE). The TLE score will be equal to the number of boats to finish plus 2 points. This changes RRS 35, A5.1, A5.2 and A10.

17. HEARING REQUESTS

- 17.1 The protest limit is 90 minutes after the last boat has finished the last race of the day or the Race Committee signals no more racing today, whichever is later.
- 17.2 Hearing forms will be available at the Race Office and may also be available in the CYH Etchells container.
- 17.3 Protests and requests for redress or reopening shall be delivered to the Race Office within the protest time limit. Contact mobile phone numbers should be included on the protest form.
- 17.4 Notices will be posted on the ONB and the event WhatsApp group no later than 30 minutes after the protest time limit to inform competitors of the hearings in which

they are parties or named as witnesses. Hearings will be held in the protest room located at the RYS.

18. SCORING

- 18.1 One (1) race shall be completed to constitute a series.
- 18.2 When one (1) to four (4) races have been completed a boats series score shall be the total of all their scores.
- 18.3 When five (5) or more races have been completed, a boat's score will be the total of her race scores excluding her worst score.

19. SAFETY REGULATIONS

- 19.1 [DP] Boats should check in with the RC each day before the warning signal of their first race, by passing close on by the starboard side of the main CV on port tack and await acknowledgement from the RC.
- 19.2 [DP] A boat that retires from a race shall notify the Race Committee as soon as possible on VHF Ch 77 or by hailing an official regatta support boat or rib.

20. REPLACEMENT OF CREW OR EQUIPMENT

- 20.1 Substitution of competitors is not allowed without the prior written permission of the Race Committee.
- 20.2 Substitution of damaged or lost equipment is not allowed unless authorised in writing by the Race Committee. Requests for substitution shall be made to the committee at the first reasonable opportunity, which may be after the race.

21. EQUIPMENT AND MEASUREMENT CHECKS

- 21.1 A boat or equipment may be inspected at any time for compliance with the Class Rules and Sailing Instructions.

22. SUPPLIED BOATS

- 22.1 Does not apply.

23. OFFICIAL VESSELS

- 23.1 The Committee Vessel (Signal Vessel) will be a large motor launch Call Sign Seamui.
- 23.2 Mark laying vessels will be RYS Ribs.

24. SUPPORT TEAMS

- 24.1 [DP] Team leaders, coaches and other support personnel must stay outside areas where boats are racing from the time of the preparatory signal for each start thereafter until all boats have finished or retired or the Race Committee signals a postponement, general recall or abandonment.
- 24.2 [DP] All support vessels shall carry a marine VHF radio and comply with RRS 37 'Search and rescue Instructions'.

25. TRASH DISPOSAL

- 25.1 Trash may be placed aboard support or official boats.

26. HAUL OUT RESTRICTIONS

- 26.1 [DP] All boats shall be afloat by 1800 the day before the first race.
- 26.2 [DP] Boats shall not be hauled out during the Event except with and according to the terms of prior written permission of the race committee.

27. DIVING EQUIPMENT AND PLASTIC POOLS

- 27.1 [DP] Underwater breathing apparatus and plastic pools or their equivalent shall not be used around competing boats from 1800 on Thursday 19 August until the end of the event.
- 27.2 [DP] Boats shall not be cleaned below a line about 10 centimetres below the waterline by any means from 1800 on Thursday until the end of the event.

28. PRIZES

- 28.1 The event prize giving will be held at the Royal Yacht Squadron as soon as possible after the final day's racing and after any protest(s).
- 28.2 The **Open European Championship Trophy** will be awarded to the overall winner.
- 28.3 The **European Corinthian Championship Trophy** will be awarded to the highest placed boat whose helm and crew are all WSSC Group 1. Those crews competing for the Corinthian Prize must provide their current valid WSSC ID number before racing starts.
- 28.4 A **Youth Prize** will be awarded to the highest place boat sailed by youth crew. A youth crew is defined as one where all crew members are under 29 years of age on the 01/01/2021.

29. RISK STATEMENT

- 29.1 Rule 3 of the Racing Rules of Sailing states: "The responsibility for a boat's decision to participate in a race or to continue racing is hers alone."
- 29.2 Sailing is by its nature an unpredictable sport and therefore involves an element of risk. By taking part in the event, each competitor agrees and acknowledges that:
 - (a) They are aware of the inherent element of risk involved in the sport and accept responsibility for the exposure of themselves, their crew and their boat to such inherent risk whilst taking part in the event;
 - (b) They are responsible for the safety of themselves, their crew, their boat and their other property whether afloat or ashore;
 - (c) They accept responsibility for any injury, damage or loss to the extent caused by their own actions or omissions;
 - (d) Their boat is in good order, equipped to sail in the event and they are fit to participate;
 - (e) The provision of a race management team, patrol boats, and other officials and volunteers by the event organiser does not relieve them of their own responsibilities;
 - (f) The provision of patrol boat cover is limited to such assistance, particularly in extreme weather conditions, as can be practicably provided in the circumstances;

- (g) It is their responsibility to familiarise themselves with any risks specific to this venue or this event drawn to their attention in any rules and information produced for the venue or event and to attend any safety briefing held for the event.
- (h) They are responsible for ensuring that their boat is equipped and seaworthy so as to be able to face extremes of weather; that there is a crew sufficient in number, experience and fitness to withstand such weather; and that the safety equipment is properly maintained, stowed and in date and is familiar to the crew.

30. INSURANCE

- 30.1 Each participating boat is required to hold adequate insurance cover including against third party claims of at least £3 million.

31. WHATSAPP GROUP

- 31.1 Please use the QR Code to the right to add yourself to the official WhatsApp Group.



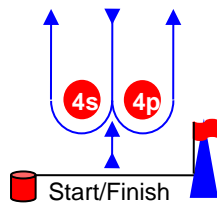
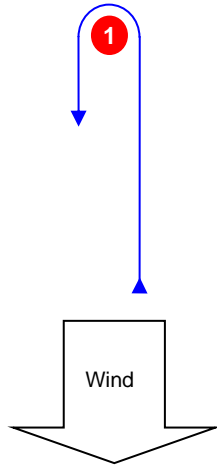
ADDENDUM A - COURSE ILLUSTRATIONS

ADDENDUM B - SOLENT CHARTLET

ADDENDUM A - COURSE ILLUSTRATIONS

Course Illustrations – Windward Leeward

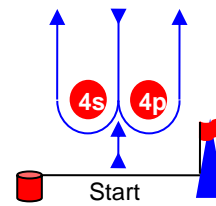
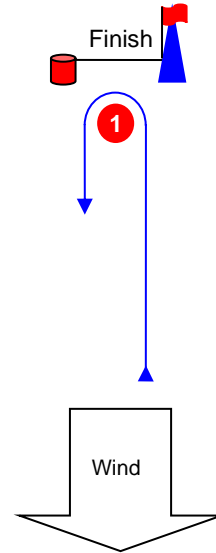
L



Course: Leeward finish

| Signal | Mark Rounding Order |
|-----------|--|
| L2 | Start – 1 – 4s/4p – 1 – Finish |
| L3 | Start – 1 – 4s/4p – 1 – 4s/4p – 1 – Finish |
| L4 | Start – 1 – 4s/4p – 1 – 4s/4p – 1 – 4s/4p – 1 – Finish |

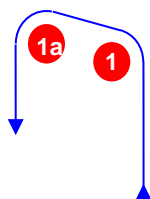
W



Course: Windward Finish

| Signal | Mark Rounding Order |
|-----------|--|
| W2 | Start – 1 – 4s/4p – Finish |
| W3 | Start – 1 – 4s/4p – 1 – 4s/4p – Finish |
| W4 | Start – 1 – 4s/4p – 1 – 4s/4p – 1 – 4s/4p – Finish |

LA / WA

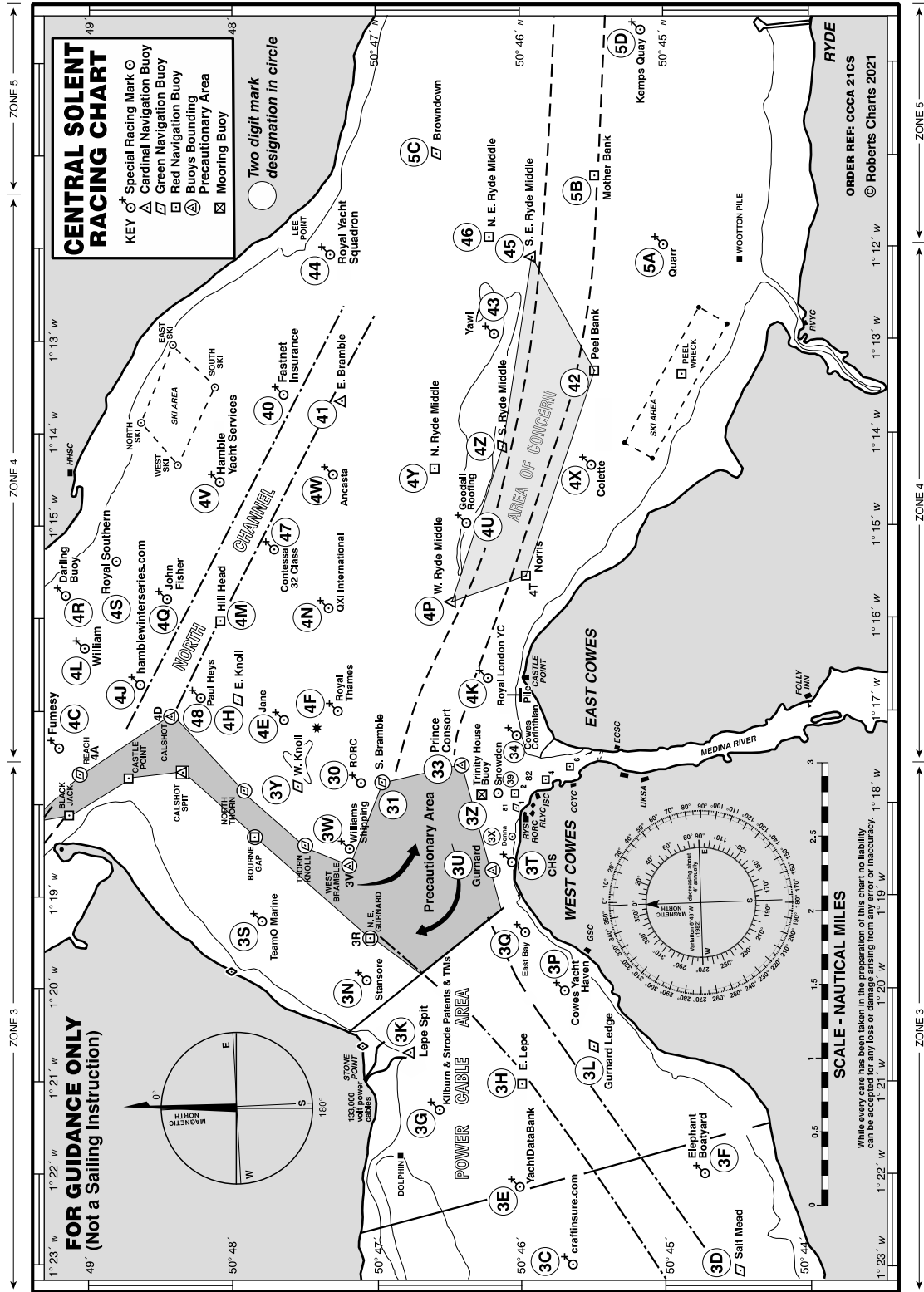


Course: Windward/leeward with offset mark 1a

| Signal | Mark Rounding Order |
|------------|--|
| LA2 | Start – 1 – 1a – 4s/4p – 1 – 1a – Finish |
| LA3 | Start – 1 – 1a – 4s/4p – 1 – 1a – 4s/4p – 1 – 1a – Finish |
| LA4 | Start – 1 – 1a – 4s/4p – 1 – 1a – 4s/4p – 1 – 1a – 4s/4p – 1 – 1a – Finish |
| WA2 | Start – 1 – 1a – 4s/4p – Finish |
| WA3 | Start – 1 – 1a – 4s/4p – 1 – 1a – 4s/4p – Finish |
| WA4 | Start – 1 – 1a – 4s/4p – 1 – 1a – 4s/4p – 1 – 1a – 4s/4p – Finish |

ADDENDUM B

Chartlet of the Racing Area showing the Solent Two Character Codes.



All correspondence should be directed to:

The Royal Yacht Squadron, The Castle, Cowes, UK, PO31 7QT. Tel: 01983 292191, Email: mail@rys.org.uk