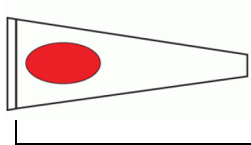

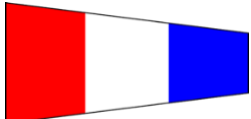

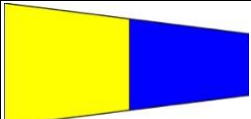
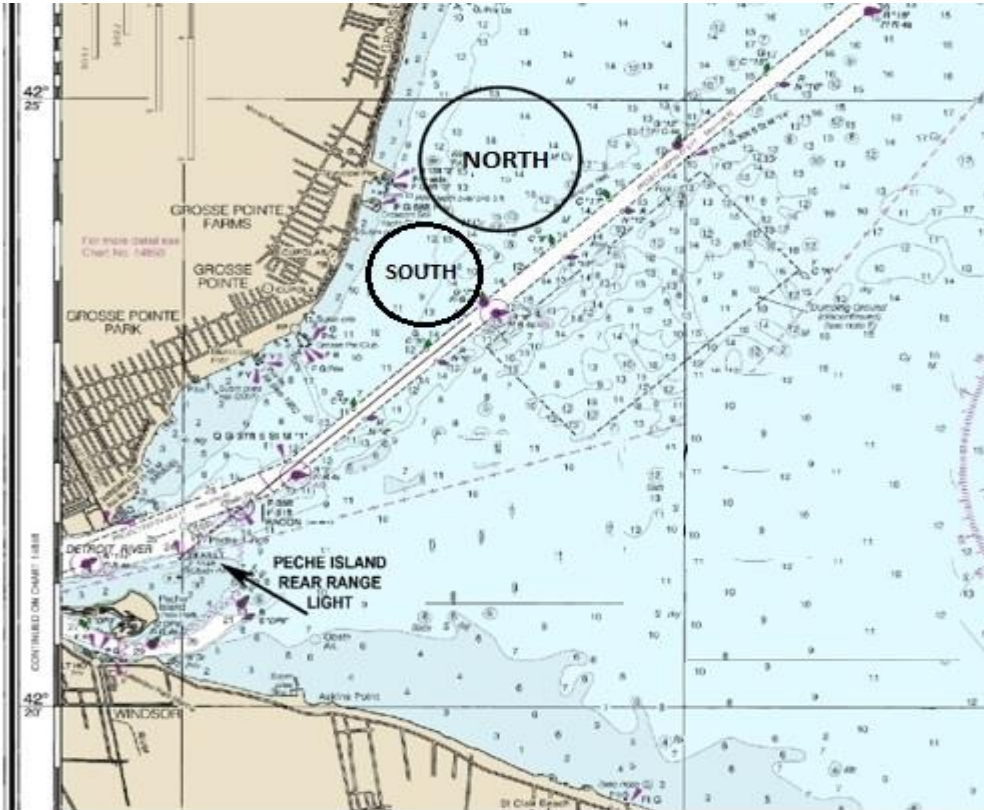


**ATTACHMENT A**  
*CLASS FLAGS AND COURSE ASSIGNMENTS*

	<b>Circle South</b>	<b>Circle North</b>
	<b>PHRF 1</b>	<b>J-111/1D35</b>
	<b>Express 27</b>	<b>J-120</b>
	<b>Cal 25</b>	<b>PHRF 2</b>
	<b>Crescent</b>	<b>J-35</b>
	<b>Flying Scot</b>	

**ATTACHMENT B**  
*Racing Areas*



**ATTACHMENT C**  
**ILLUSTRATING THE COURSES**

**Courses 4 and 6 (Not to Scale)**

**Course 4: START – 1 – 1a – 2P/2S – 1 – 1a – FINISH**  
 (2 laps / 4 legs, downwind finish)

**Course 6: START – 1 – 1a – 2P/2S – 1 – 1a – 2P/2S – 1 – 1a – FINISH**  
 (3 laps / 6 legs, downwind finish)

Mark 2 may be either a gate or a single mark left to port

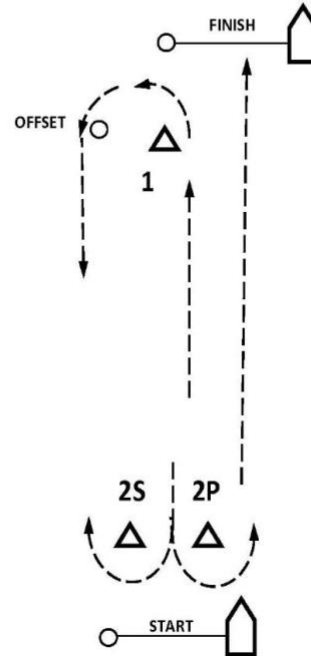


**COURSE 3 and 5 DIAGRAM and ROUNDING ORDER (Not to Scale)**

**Course 3: START – 1 – Offset – 2P/2S – FINISH**  
 (1 ½ laps / 3 legs, upwind finish)

**Course 5: START – 1 – Offset – 2P/2S – 1 – Offset – 2P/2S – FINISH**  
 (2 ½ laps / 5 legs, upwind finish)

Mark 2 may be either a gate or a single mark left to port



**If there is only one leeward mark (Mark 2), it shall be left to port.**