



2021 CRAB Cup
Saturday, 21 August 2021
CBYRA Sanction #323
Sailing Instructions (SIs)
For the Pursuit Race
With Amendment No. 1



The notation '[NP]' in a rule means that a boat may not protest another boat for breaking that rule. This changes RRS 60.1(a).

1 RULES

- 1.1. The event is governed by the rules as defined in *The Racing Rules of Sailing*.

2 CHANGES TO SAILING INSTRUCTIONS

- 2.1. Any change to the sailing instructions will be posted before 0800 on the day it will take effect, except that any change to the schedule of races will be posted by 2000 on the day before it will take effect.

3 COMMUNICATIONS WITH COMPETITORS

- 3.1. On the water, the race committee intends to monitor and communicate with competitors on VHF radio channel 73.

4 CODE OF CONDUCT

- 4.1 [DP] Competitors and support persons shall comply with reasonable requests from race officials.

5 SIGNALS MADE ASHORE

- 5.1. Signals made ashore before the race start shall be displayed from the EYC flagpole, located on the waterside of the clubhouse.
- 5.2. The Race Committee (RC) may announce signals posted ashore on VHF channel 73, and/or text message, and/or email. This announcement, lack thereof or contents thereof shall not be grounds for Redress or Protest. This changes RRS 41 and 62.1(a).
- 5.3. When flag AP is displayed ashore, '1 minute' is replaced with 'not less than 60 minutes' in Race Signals AP.

6 CLASS FLAGS

- 6.1. [NP] All PHRF and one-design racers shall display from the backstay their class flag specified in the CBYRA Green Book. The CRAB and Viper 640 classes are not required to display a class flag.

7 MANDATORY CHECK-IN

The RC shall use a separate check-in vessel. The vessel shall fly a solid yellow flag and shall be stationed approximately 100 yards west of the RC Signal Vessel. Do not attempt to check in with the Race Committee (RC) Signal Vessel.





- 7.1. [DP] [NP] Each boat shall pass close astern of the check-in vessel and hail her sail number until acknowledged by a return hail from the check-in vessel.

8 COURSES

- 8.1. RC shall designate one (1) of two (2) possible courses to be sailed (refer to Attachment A). The designated course will be identified on a board displayed on the check-in vessel and the Signal Vessel. The board will show either “A” or “B” to indicate which course shall be sailed. The Signal Vessel will also attempt to repeatedly state the course designation on VHF channel 73 during the start sequences. The two (2) possible courses are:

<p>Course “A” (7.5 nm)</p> <p>(Start) R “2” FI R 2.5s – G “WR87” Q G – G R C “SR” – “O” – (Finish) R “2” FI R 2.5s</p>
<p>Course “B” (5.0 nm)</p> <p>(Start) R “2” FI R 2.5s – G “WR87” Q G – “Y” – “O” – (Finish) R “2” FI R 2.5s</p>

- 8.2. The Tolly Point mark FI G 4s 15ft 4M “1AH” and the Thomas Point Shoal Light are passing marks of the course and shall be passed to the channel-side. The approximate GPS coordinates of FI G 4s 15ft 4M “1AH” are Latitude N 38° 56.151’, Longitude W 076° 26.168’. The approximate GPS coordinates of Thomas Point Shoal Light” are Latitude N 38° 53.939’, Longitude W 076° 26.154’.

9 MARKS

- 9.1. The marks of the course and their approximate GPS coordinates are listed below.

R “2” FI R 2.5s	G “WR87” Q G	G R C “SR”	“Y” 5’ Yellow Tetrahedron	“O” 5’ Orange Cylinder
N 38° 56.501’	N 38° 55.969’	N 38° 53.658’	N 38° 57.66’	N 38° 56.43’
W 076° 25.484’	W 076° 23.546’	W 076° 25.870’	W 076° 24.53’	W 076° 25.31’

THE START

- 9.2. This shall be a pursuit race with a reverse PHRF Time over Distance (ToD) starting order. The boat with the slowest rating (highest PHRF number) shall start first and the fastest rating (lowest PHRF number) shall start last.





9.3. The RC shall signal the starting sequence as follows (this changes RRS 26):

Time	Signal	Flag / Sound
1200	Warning signal for all boats	Raise large EYC burgee with 1 sound
1201	Preparatory signal for the first boat to start	Raise code flag "P" with 1 sound
1204		Lower code flag "P" with a long sound
1205	Starting signal for the first boat to start	Lower large EYC burgee and briefly raise number pennant "0" with 1 sound
Each subsequent start time	Starting signal for remaining boats	Briefly raise number pennant "0" with 1 sound

9.4. A boat's individual preparatory signal is four (4) minutes prior to her individual scheduled start. After the first boat has started, there will be no visual signal or sound for any subsequent preparatory signal. This changes RRS 26.

9.5. The start times for all boats shall be based on their PHRF ToD Circular Random handicap. The race shall use GPS time synchronization. The RC will attempt to broadcast a five (5) second countdown for each starting time on VHF channel 73. Failure of the RC to announce a start time will not be grounds for redress. This changes RRS 41 and 62.1(a).

9.6. The start time for each boat shall be available at EYC no later than 0900 hours on Friday, 20 August 2021, and will be posted on the EYC website.

9.7. The starting line shall be between a staff displaying an orange flag on the RC Signal Vessel and R "2" FI R2.5s. The approximate GPS coordinates for R "2" FI R2.5s are Latitude 38°56.501' N, Longitude 76° 25.484' W.

9.8. [DP] After the Warning signal for the first start, boats shall stay clear of the starting area until four (4) minutes before their scheduled starting time.

9.9. In the event a postponement is signaled on the water, the RC shall announce the revised start times on VHF channel 73 before lowering flag AP.

10 RECALLS

10.1. If any part of a boat's hull is on the course side of the starting line at her starting signal and she is identified, she shall be considered On Course Side (OCS). She shall not attempt to clear herself, start, or restart, and shall, instead, sail to the first mark. The race committee will attempt to broadcast her sail number on VHF channel 73. Flag X will not be used. This changes RRS 29.1.

10.2. [DP] [NP] A boat that is scored OCS shall, without a hearing, be penalized by having 15-minutes. In RRS 28, the word "start" is replaced with "start or take a penalty in accordance with SI 14.2". This changes RRS 28, 63.1, A4, and A5.





11 THE FINISH

- 11.1. The finishing line shall be between a staff displaying a blue flag on the RC vessel and R "2" FI R2.5s.
- 11.2. The RC may shorten the course at any rounding mark in accordance with RRS 32.

12 RACE TIME LIMIT

- 12.1. The race time limit is 3.5 hours after the start of the first boat.
- 12.2. The finishing window is 90 minutes after the first boat in a class sails the course and finishes.
- 12.3. If a boat in a class has *sailed the course* within the race time limit, all other boats in that class will be scored. Those that finished within the finishing window will be scored in their finishing order. Those who have not finished within the finishing window will be scored Time Limit Expired (TLE). This changes RRS 35, A5.1, A5.2, and A10.

13 HEARING REQUESTS

- 13.1. Scoring Inquiries shall be submitted within the Protest Time Limit.
 - a. Scoring inquiries shall be submitted via the "Online Scoring Inquiry Filing" link found on the Yacht Scoring event main page.
 - b. Scoring inquiries may be resolved via teleconference or video conference.
- 13.2. Protests and Requests for Redress shall be filed within the Protest Time Limit. Electronic submittal shall be used and is available via the "Owner's Corner" link found on the Yacht Scoring event main page or via email to race.committee@eastportyc.org. A diagram of the incident, if applicable, cannot be submitted via Yacht Scoring, and should be scanned and emailed to the Race Committee at race.committee@eastportyc.org prior to the hearing.
- 13.3. The alternative penalty acceptance form (RRS Appendix V2) will be available via the "Documents & Forms" link found on the Yacht Scoring event main page. The form may also be emailed to the Race Committee at race.committee@eastportyc.org.
- 13.4. The protest time limit is sixty (60), minutes after the RC Signal Vessel dock time. This posting constitutes the notification required in RRS 61.3. The time limit for a Request for Redress based on an incident in the racing area shall be the Protest Time Limit. This changes RRS 62.2.
- 13.5. The Protest Committee may schedule a hearing prior to the Protest Time Limit if the parties and witnesses are available and have had time to prepare for the hearing. Protest and/or request for redress hearings will be virtual hearings. The parties to a virtual hearing are responsible for having their witnesses, if any, present at the beginning of the hearing. The time and location of each protest hearing will be posted on the Official Notice Board. Parties and witnesses are encouraged to download and review the Protest Procedure Guidelines & Code of Conduct for Remote Hearings, available via the "Documents & Forms" link found on the Yacht Scoring event main page.





CRAB Cup

Pursuit Race Sailing Instructions (SIs) With Amendment No. 1



14 SCORING

- 14.1. Boats to be scored TLE and not thereafter retiring, being penalized or given redress will be scored points equal to the number of boats finishing within the race time limit plus two (2) points by the RC without a hearing. This changes RRS A5.2

15 SAFETY REGULATIONS

- 15.1. [DP] [NP] A boat that retires from a race shall notify the RC as soon as possible either by hail, on VHF channel 73, by phone via the EYC cell phone at (410) 271-7193, or via email at race.committee@eastportyc.org. A voicemail message shall include the approximate time of the message, the skipper's name, boat name, and sail number.
- 15.2. DP] [NP] A boat shall not exercise right of way, cross in proximity to, or interfere with reasonable transit of the race area by commercial traffic of any kind. Boats must take evasive action well in advance of a potentially dangerous situation. The US Coast Guard, ship captains, and bay pilots have been encouraged to report any incident they observe.
- 15.3. [NP] A boat without way may use any means of propulsion to avoid underway commercial traffic, provided:
- (a) the boat does not gain an advantage;
 - (b) using the propulsion is the boat's only means of avoiding the commercial traffic; and,
 - (c) the boat submits a report (in writing or by email) to the RC by the protest filing time limit that describes the incident and the boat's actions.
- 15.4. [NP] The RC or Protest Committee may protest a boat for SI 15.2 and 15.3 based on information received from any source. The protest time limit does not apply. This changes RRS 60.2, RRS 60.3, RRS 61.3, and 63.6 (c).

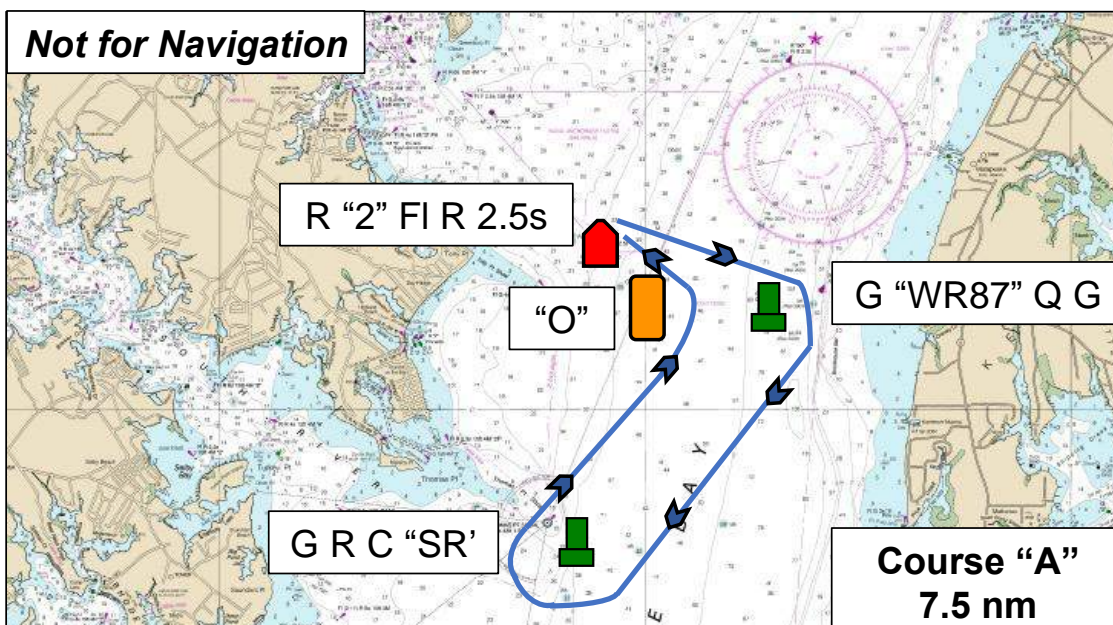
16 TRASH DISPOSAL

[DP] This is a Clean Regatta; all competitors are strongly encouraged to use multi-use water bottles instead of disposable water bottles, and to recycle whenever possible.





SIs Attachment A



Notes:

1. "O" is not a mark of the course on the leg from R "2" FI R 2.5s to G "WR87" Q G and may be passed on either side.
2. Tolly Point ("1AH", FI G 4s) and the Thomas Point Lighthouse shall be passed to the channel-side.

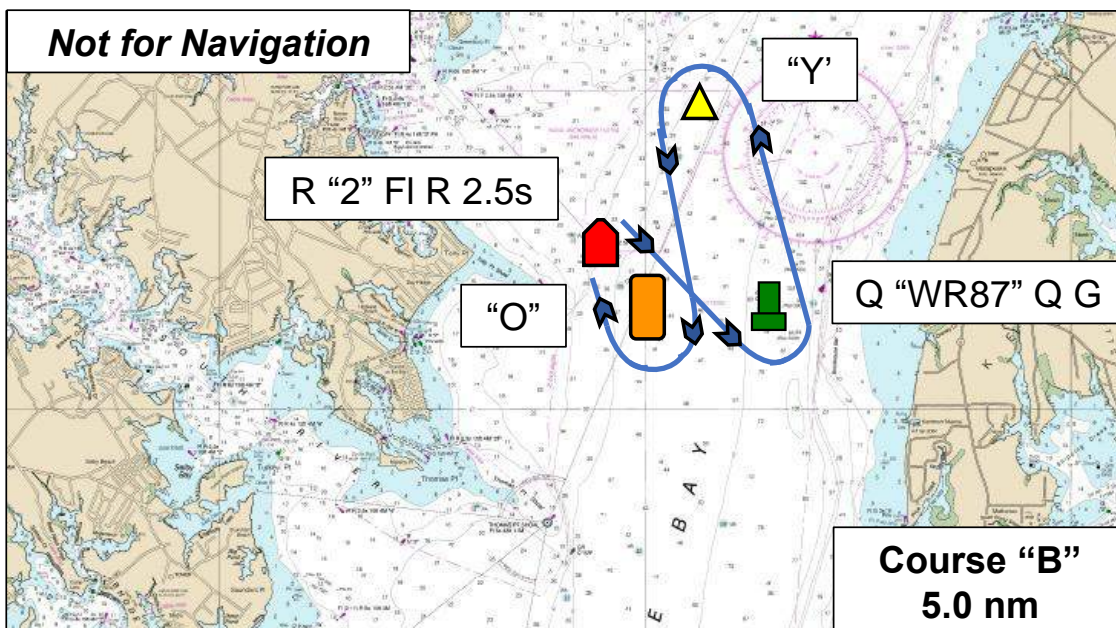
Course "A"
(7.5 nm)

(Start) R "2" FI R 2.5s – G "WR87" Q G – G R C "SR" – "O" – (Finish) R "2" FI R 2.5s

Marks of the Course and Approximate GPS Locations

R "2" FI R 2.5s	G "WR87" Q G	G R C "SR"	"O" 5' Orange Cylinder
N 38° 56.501'	N 38° 55.969'	N 38° 53.658'	N 38° 56.43'
W 076° 25.484'	W 076° 23.546'	W 076° 25.870'	W 076° 25.31'





Notes:

1. "O" is not a mark of the course on the leg from R "2" FI R 2.5s to G "WR87" Q G and may be passed on either side.
2. Tolly Point ("1AH", FI G 4s) and the Thomas Point Lighthouse shall be passed to the channel-side.

Course "B"
(5.0 nm)

(Start) R "2" FI R 2.5s – G "WR87" Q G – "Y" – "O" – (Finish) R "2" FI R 2.5s

Marks of the Course and Approximate GPS Locations				
R "2" FI R 2.5s	G "WR87" Q G	G R C "SR"	"Y" 5' Yellow Tetrahedron	"O" 5' Orange Cylinder
N 38° 56.501'	N 38° 55.969'	N 38° 53.658'	N 38° 57.66'	N 38° 56.43'
W 076° 25.484'	W 076° 23.546'	W 076° 25.870'	W 076° 24.53'	W 076° 25.31'

