

# Sandusky Islands Race/ Leukemia Cup RACE COURSE C

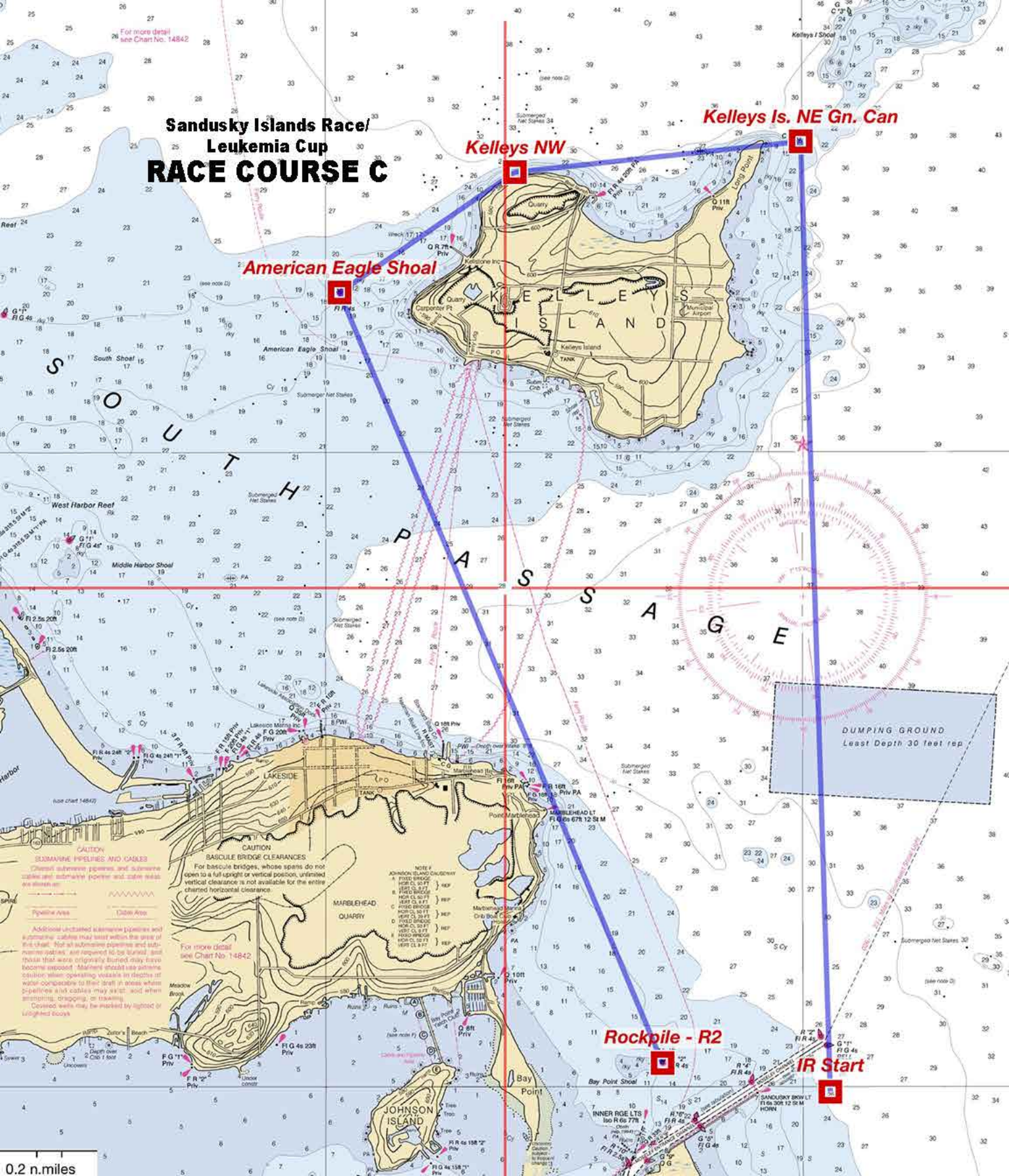
Kelleys Is. NE Gn. Can

Kelleys NW

American Eagle Shoal

Rockpile - R2

IR Start



**CAUTION**  
SUBMERSIVE PIPELINES AND CABLES  
Charted submersive pipelines and submarine cables and additional power and cable lines are shown as:  
Pipelane Area      Cable Area

Additional uncharted submersive pipelines and submarine cables may exist within the area of this chart. Not all submersive pipelines and submarine cables are required to be marked, and those that were originally buried may have become exposed. Mariners should use extreme caution when operating vessels in depths of water comparable to their draft in areas where pipelines and cables may exist, and when anchoring, mooring, or trawling.  
Obstructions may be marked by lighted or buoyed buoys.

**CAUTION**  
BASCULE BRIDGE CLEARANCES  
For bascule bridges, whose spans do not open to a full upright or vertical position, unmarked vertical clearance is not available for the entire channel horizontal clearance.

For more detail see Chart No. 14842

NOTE A  
JOHNSON ISLAND CAUSEWAY  
A. FROM BRIDGE  
B. FROM BRIDGE  
C. FROM BRIDGE  
D. FROM BRIDGE  
E. FROM BRIDGE  
F. FROM BRIDGE  
G. FROM BRIDGE  
H. FROM BRIDGE  
I. FROM BRIDGE  
J. FROM BRIDGE  
K. FROM BRIDGE  
L. FROM BRIDGE  
M. FROM BRIDGE  
N. FROM BRIDGE  
O. FROM BRIDGE  
P. FROM BRIDGE  
Q. FROM BRIDGE  
R. FROM BRIDGE  
S. FROM BRIDGE  
T. FROM BRIDGE  
U. FROM BRIDGE  
V. FROM BRIDGE  
W. FROM BRIDGE  
X. FROM BRIDGE  
Y. FROM BRIDGE  
Z. FROM BRIDGE

DUMPING GROUND  
Least Depth 30 feet rep.

0.2 n.miles